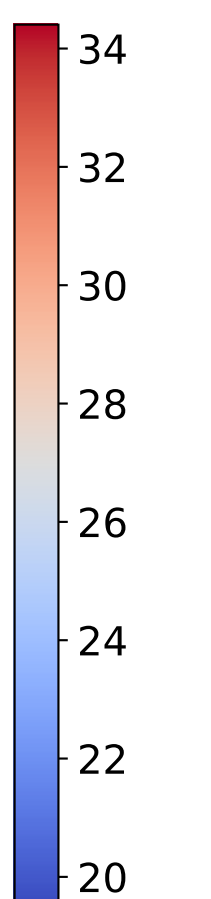
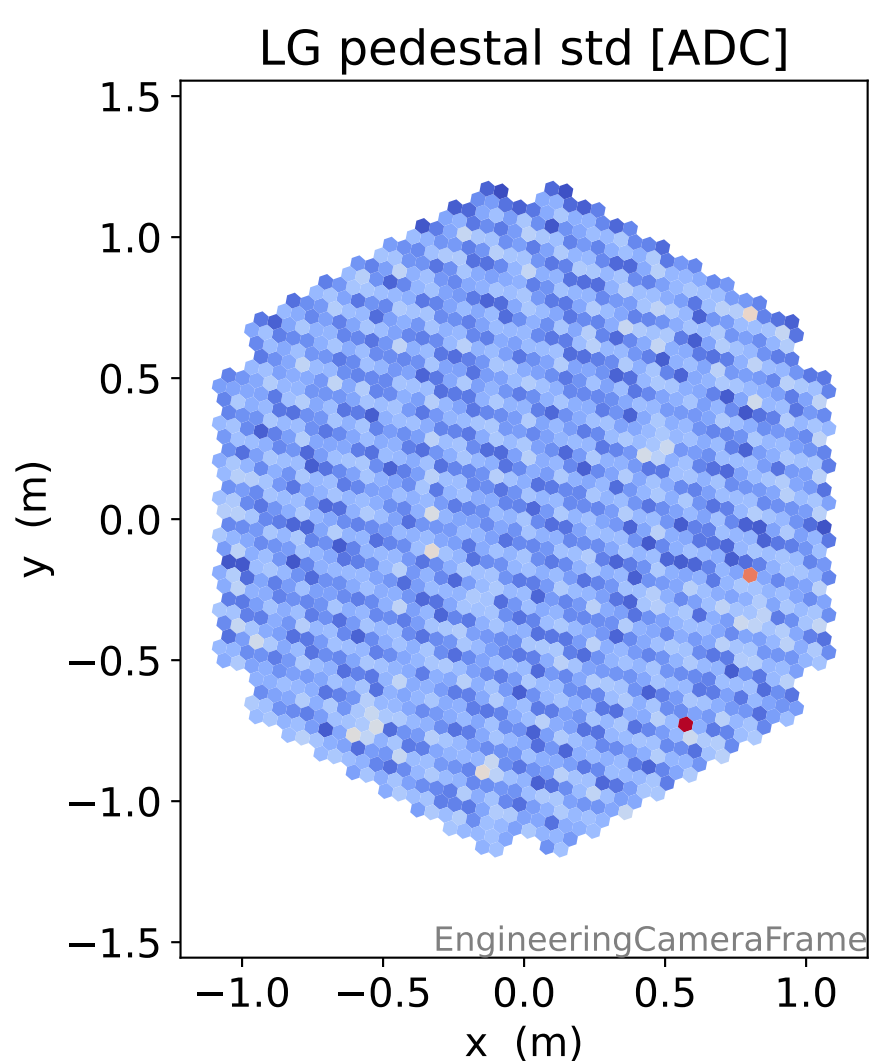
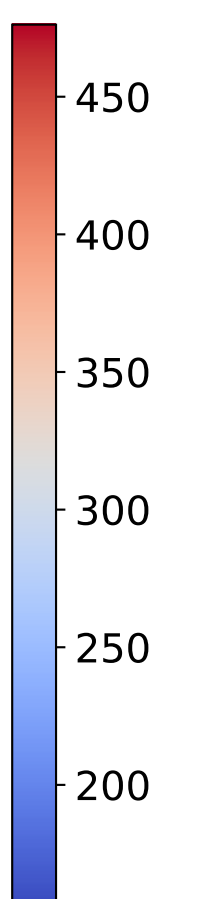
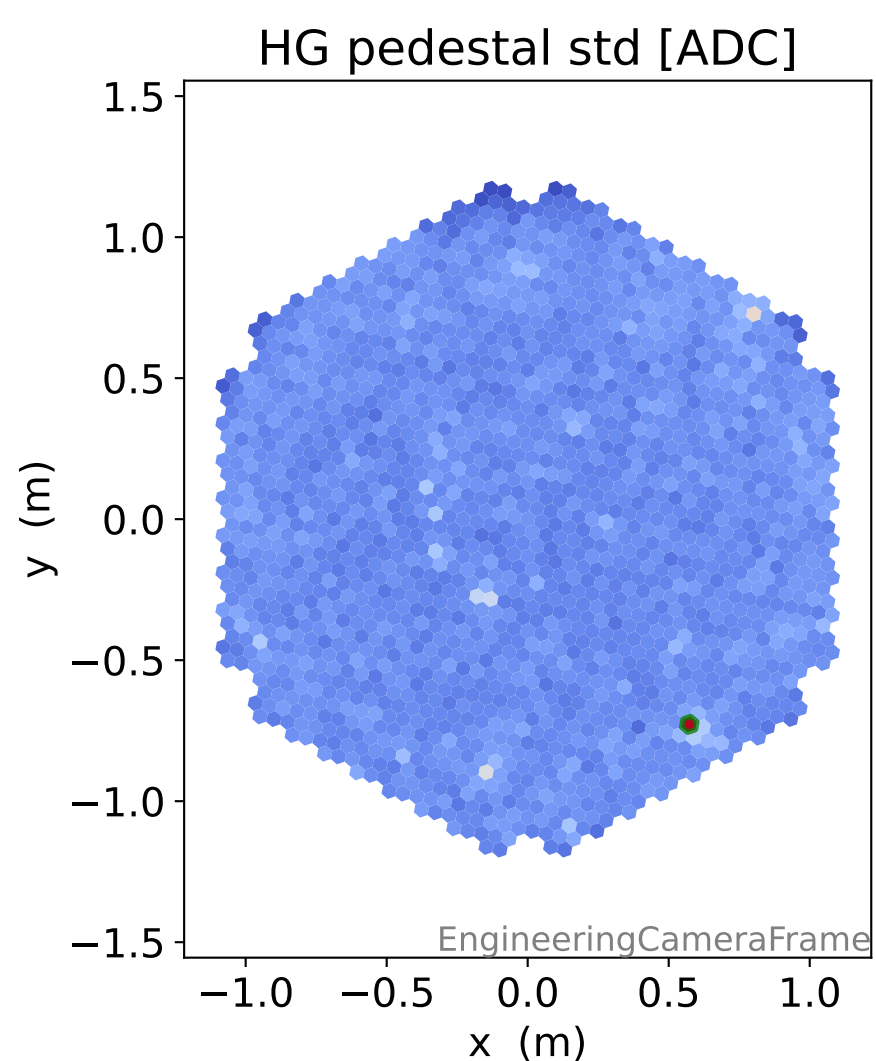
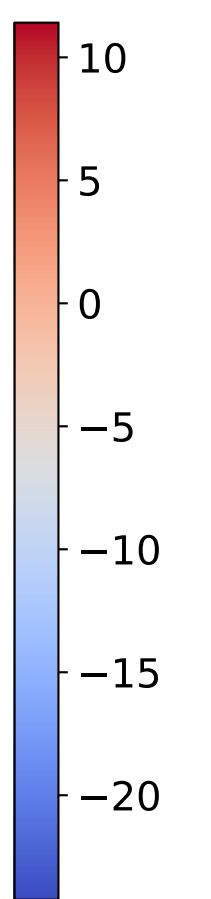
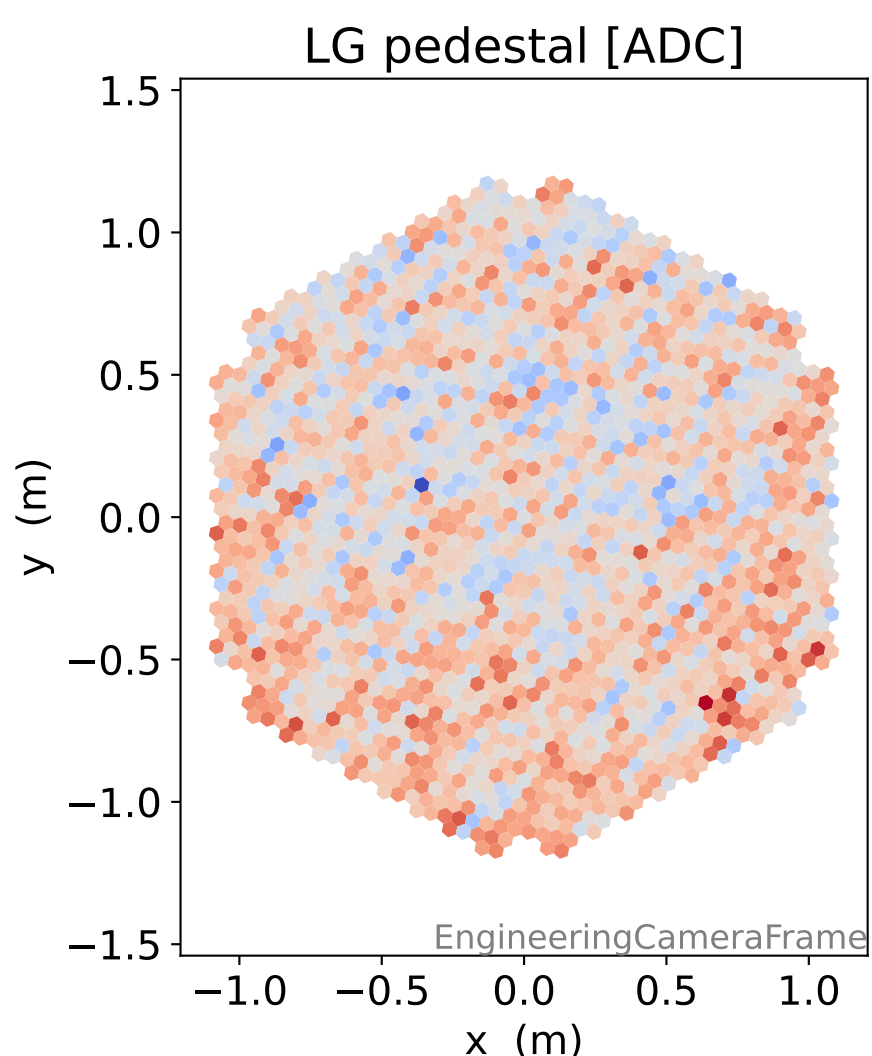
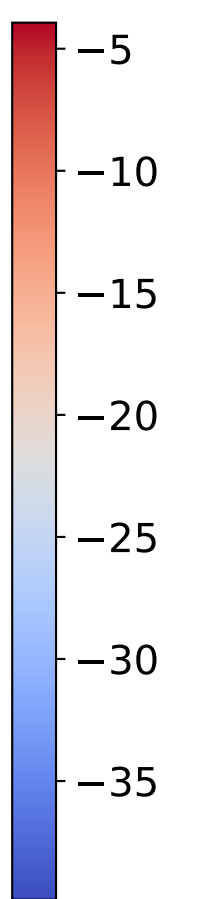
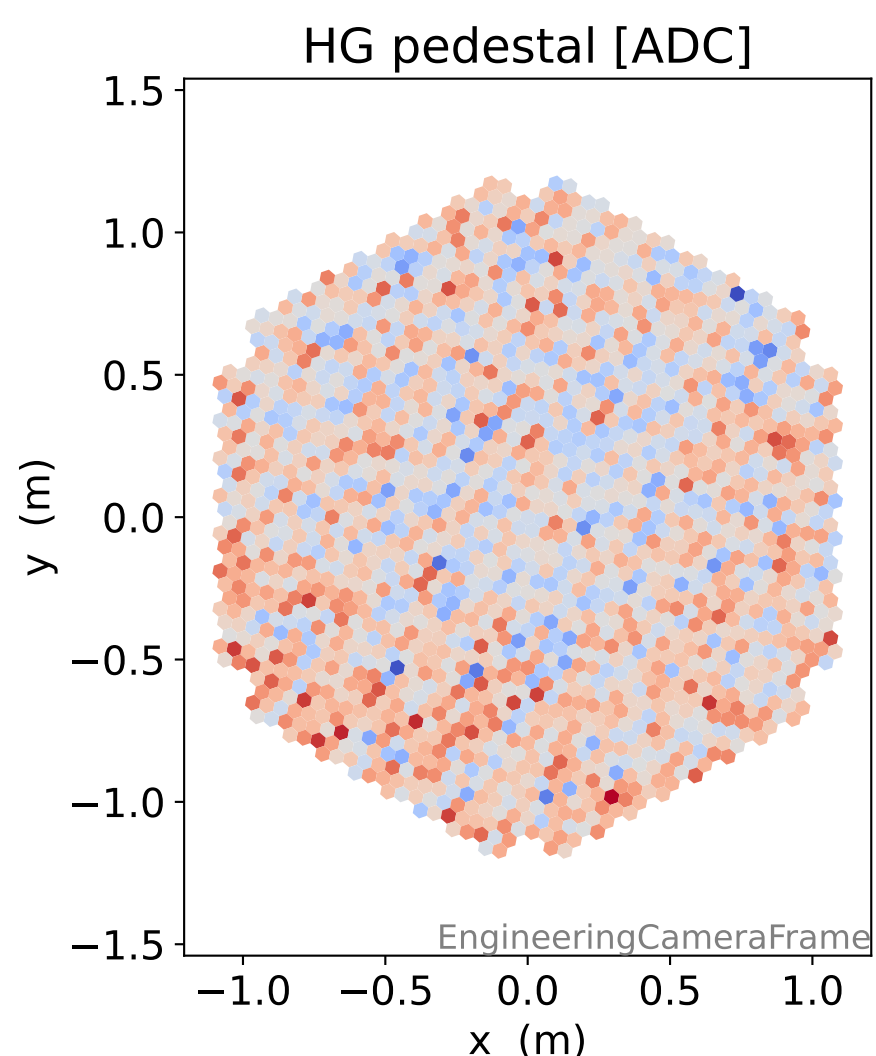
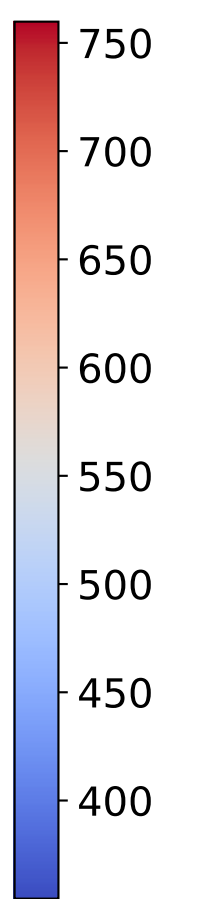
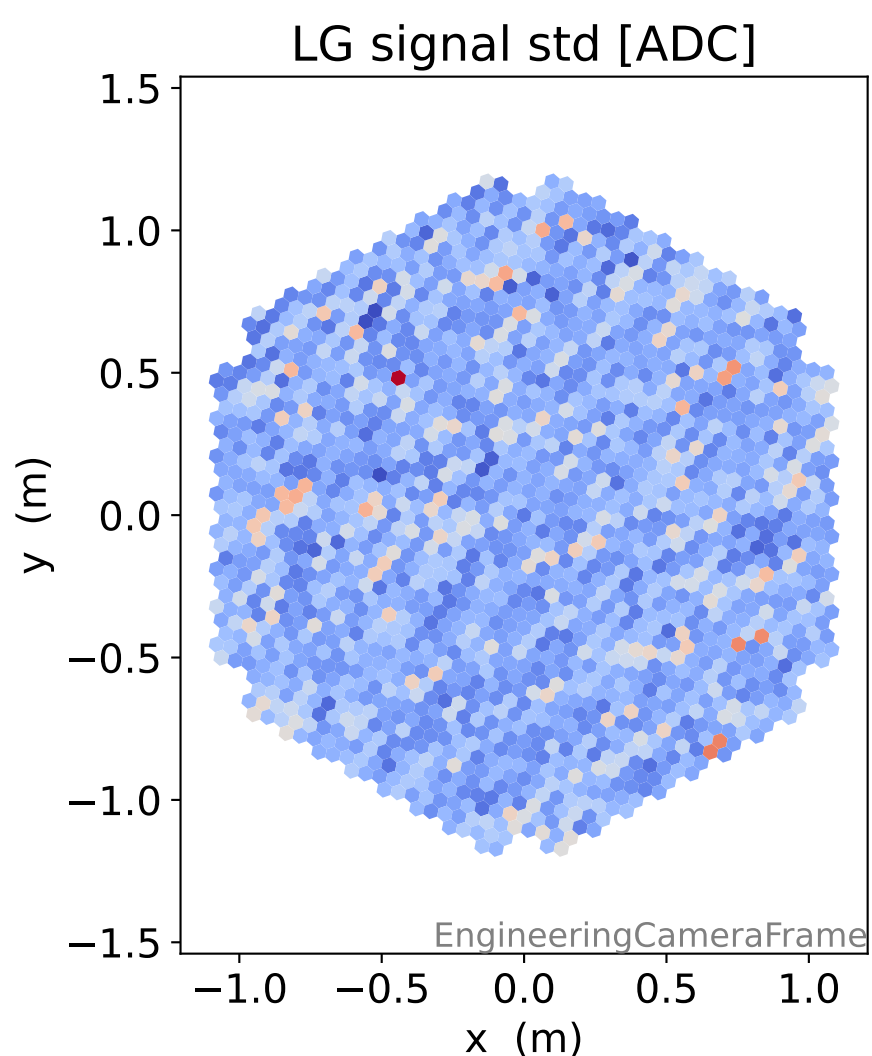
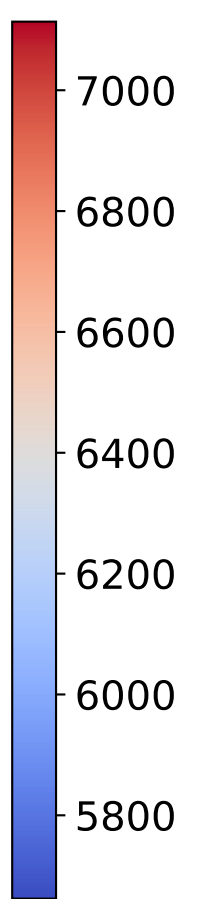
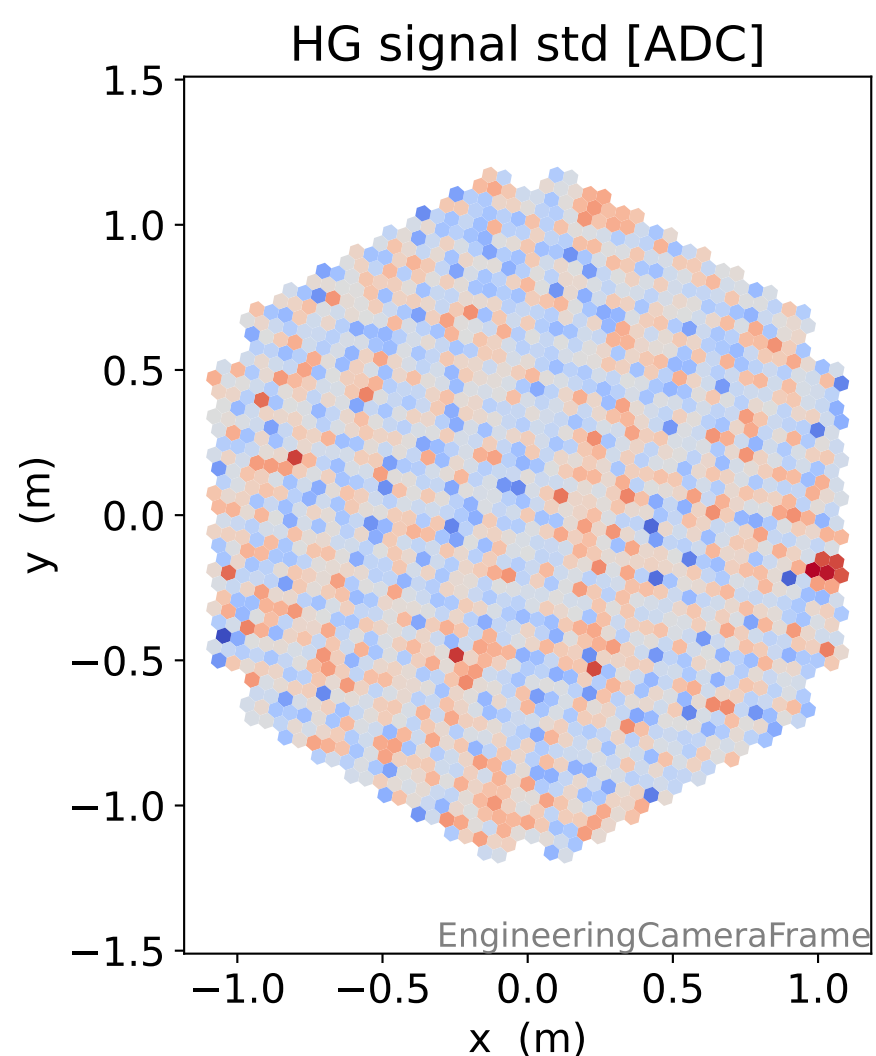
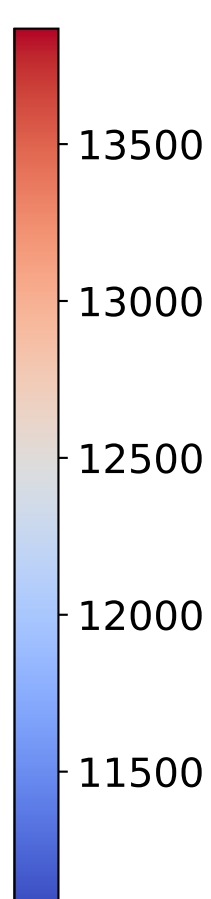
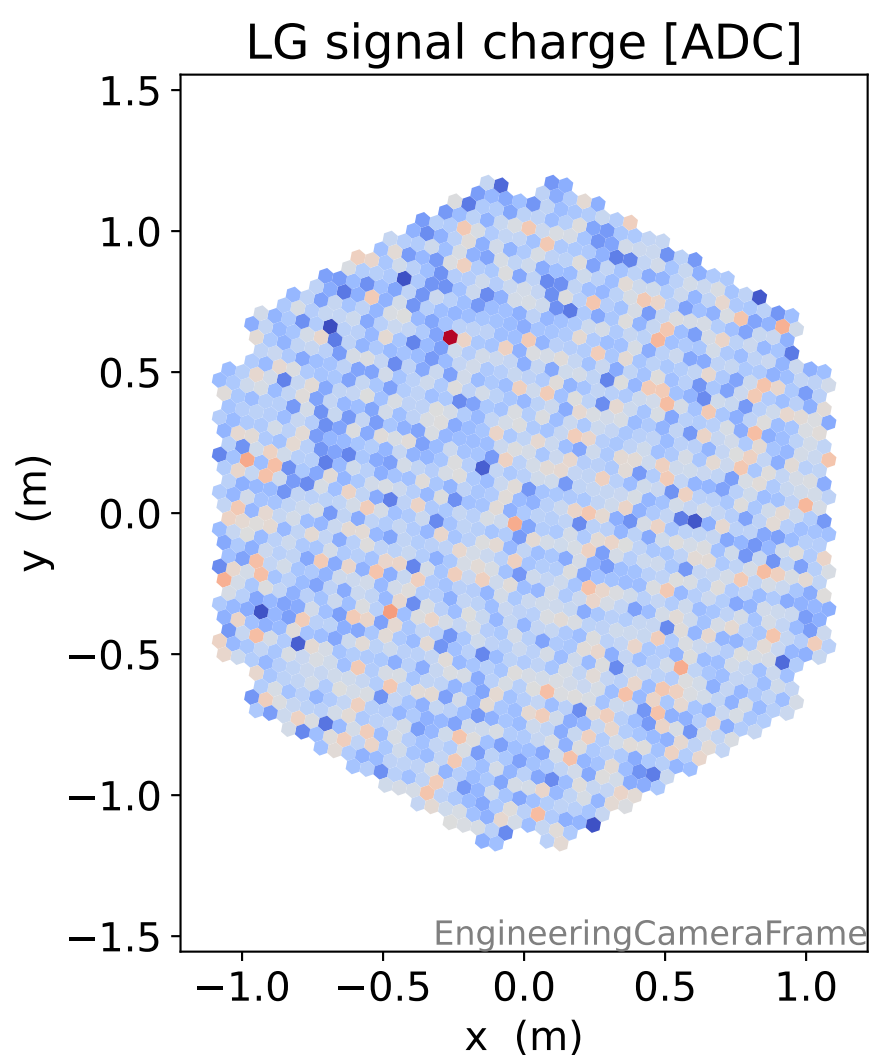
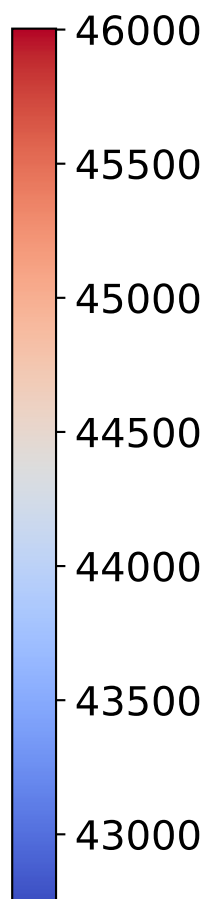
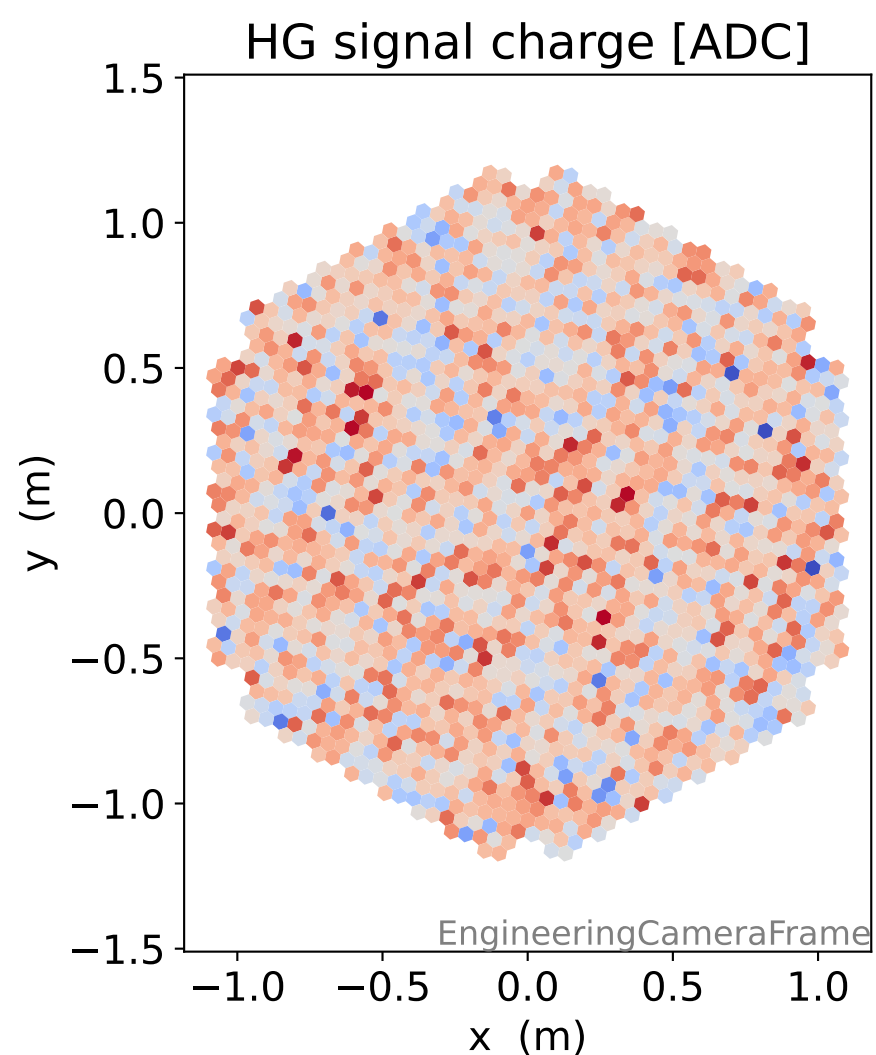
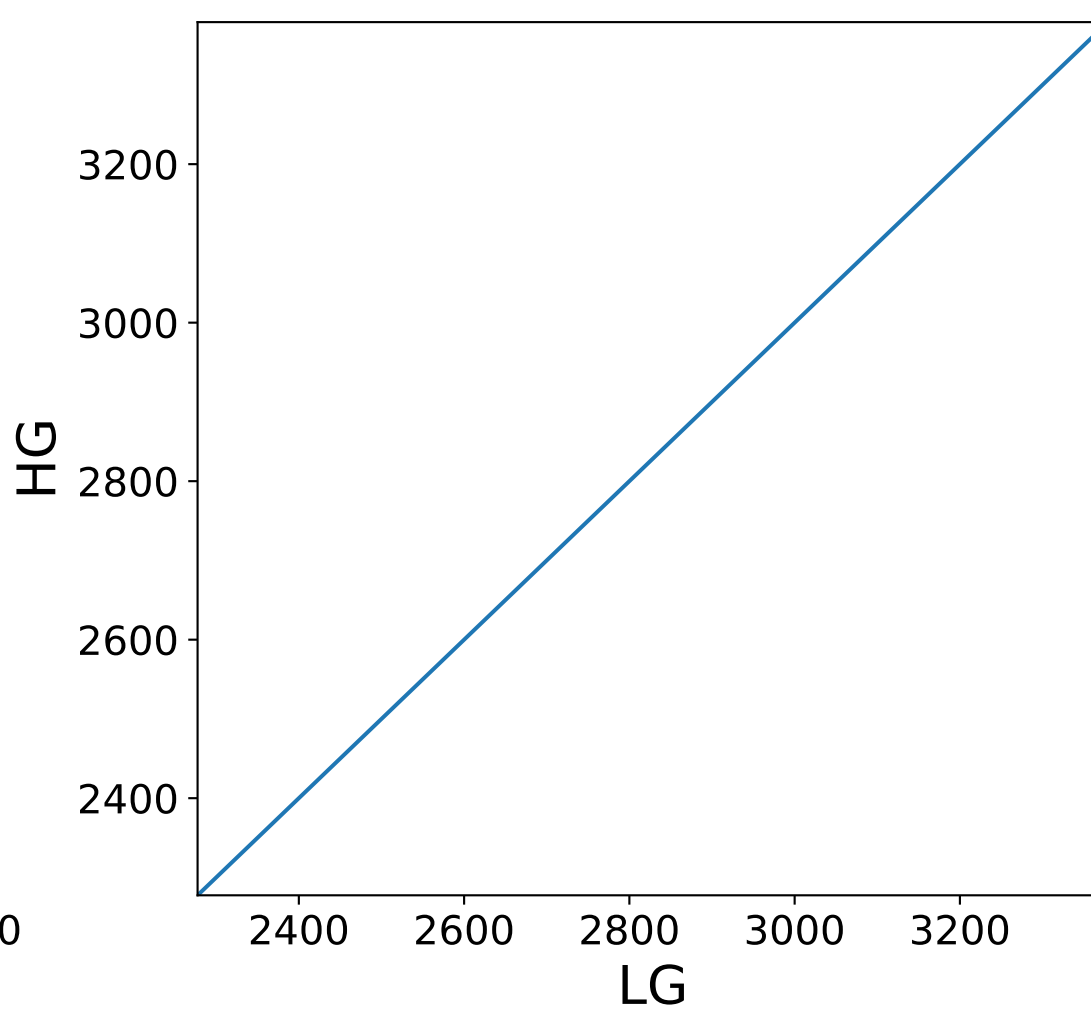
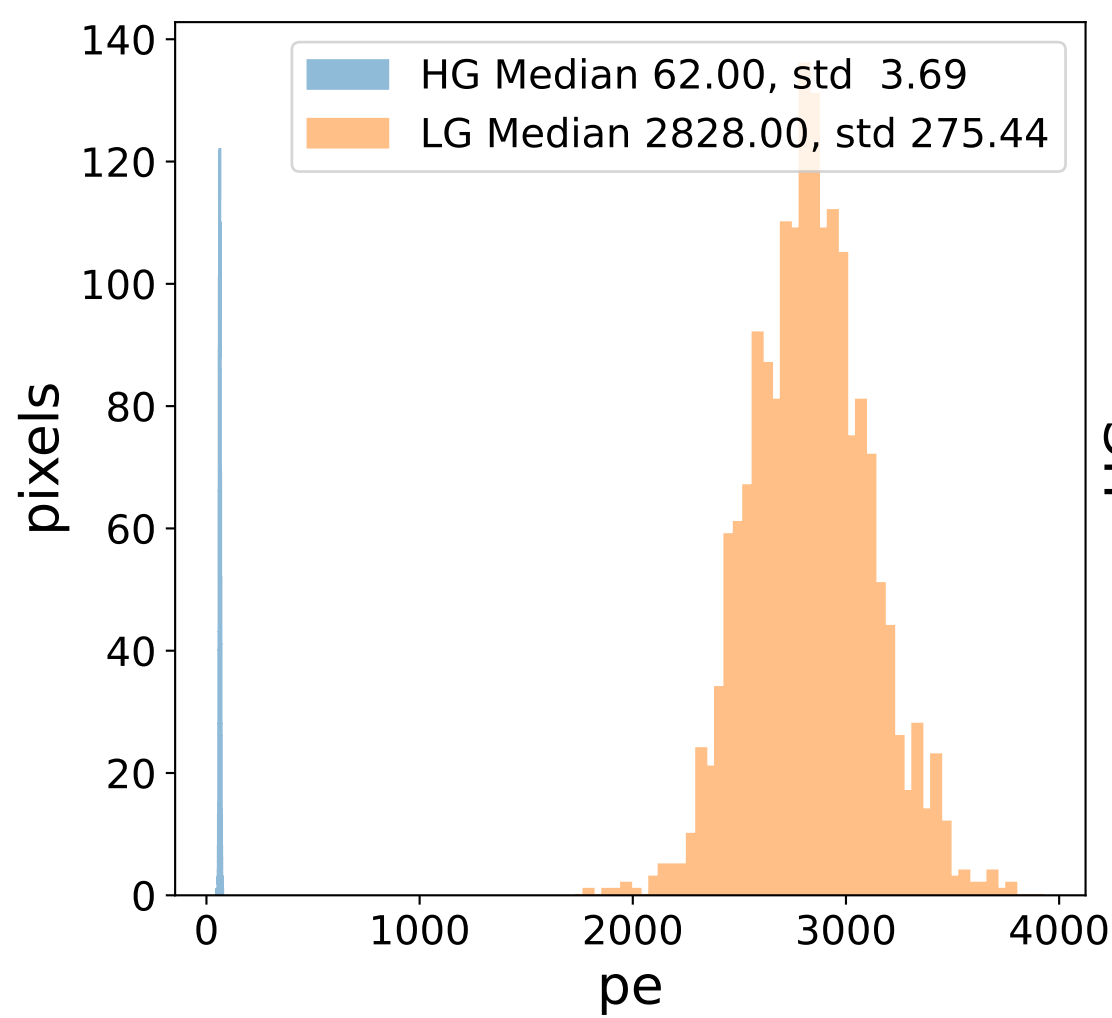
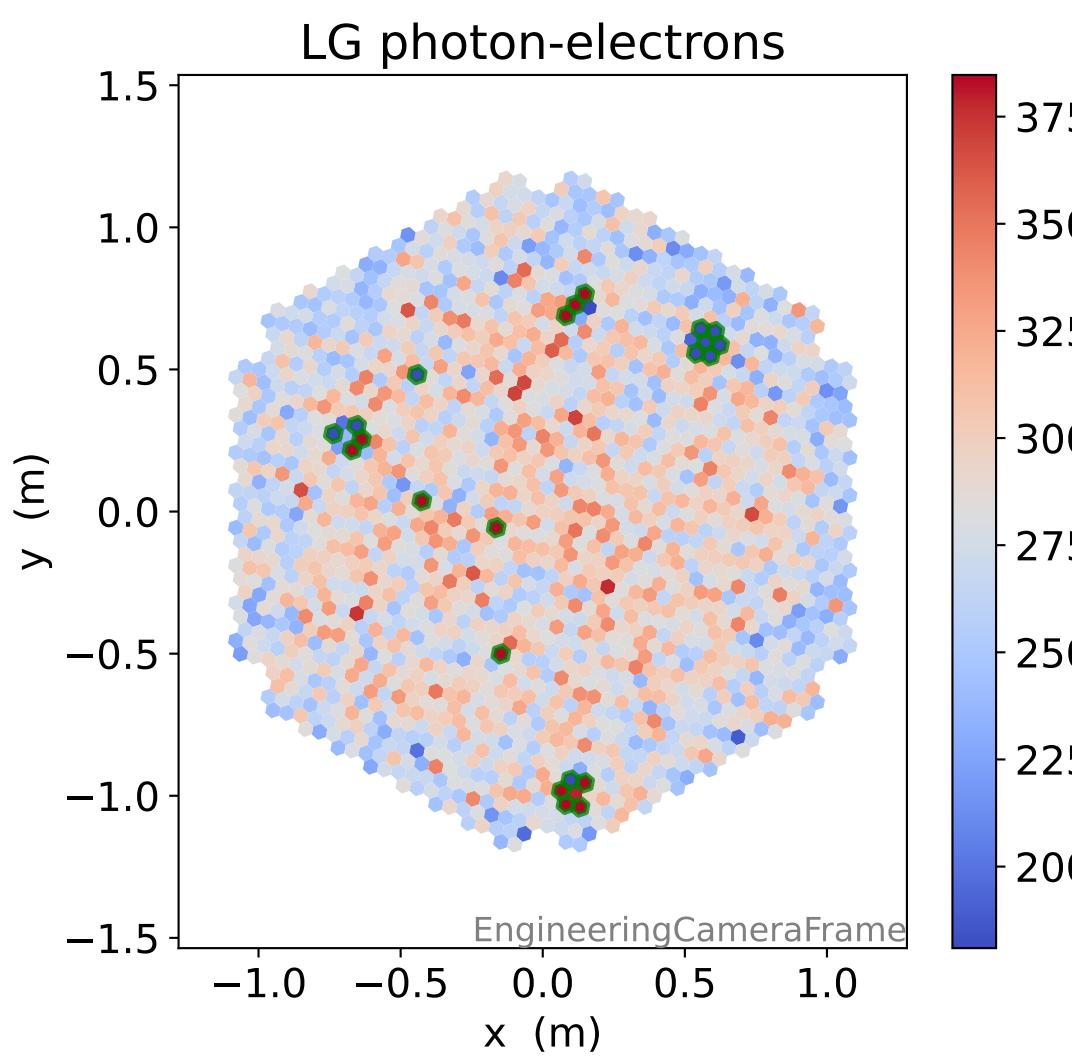
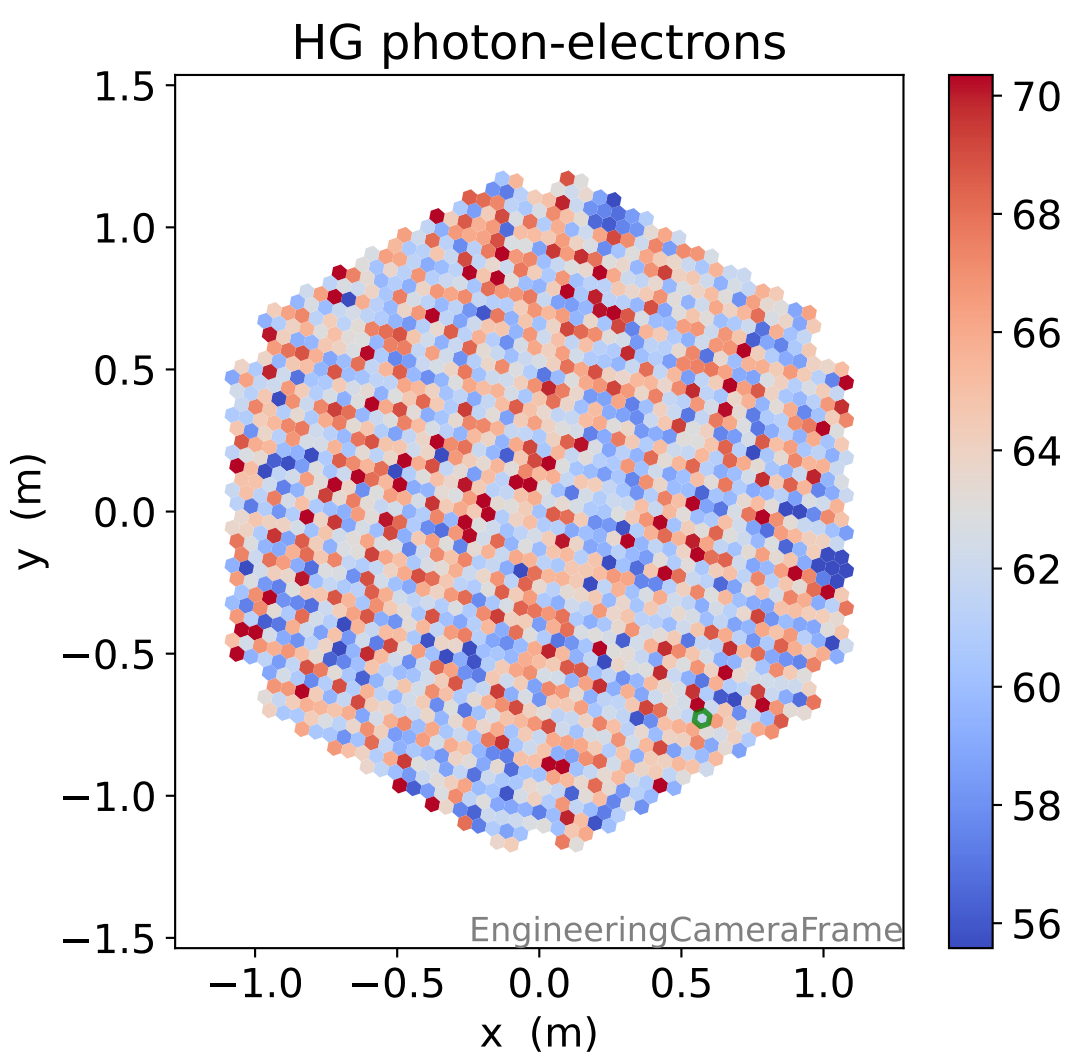
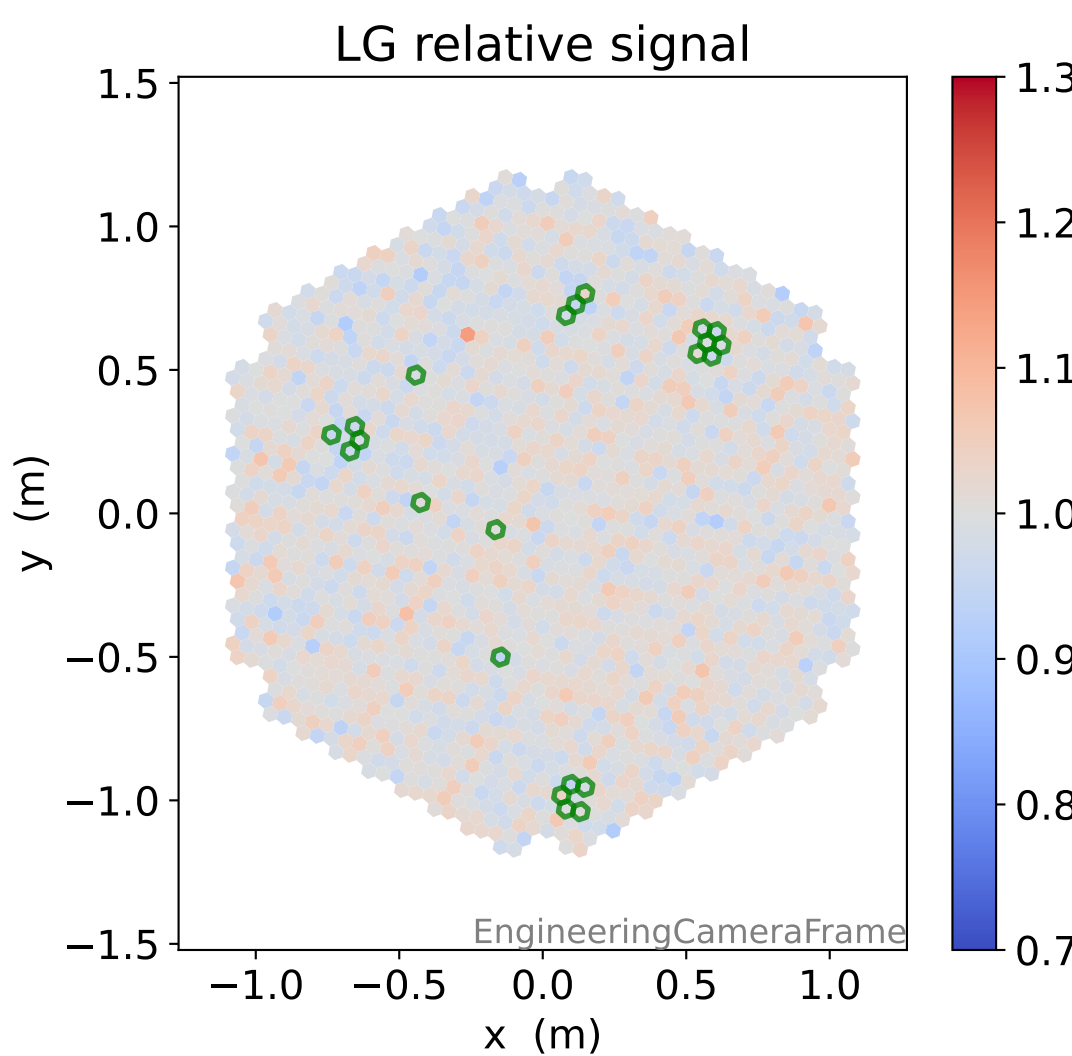
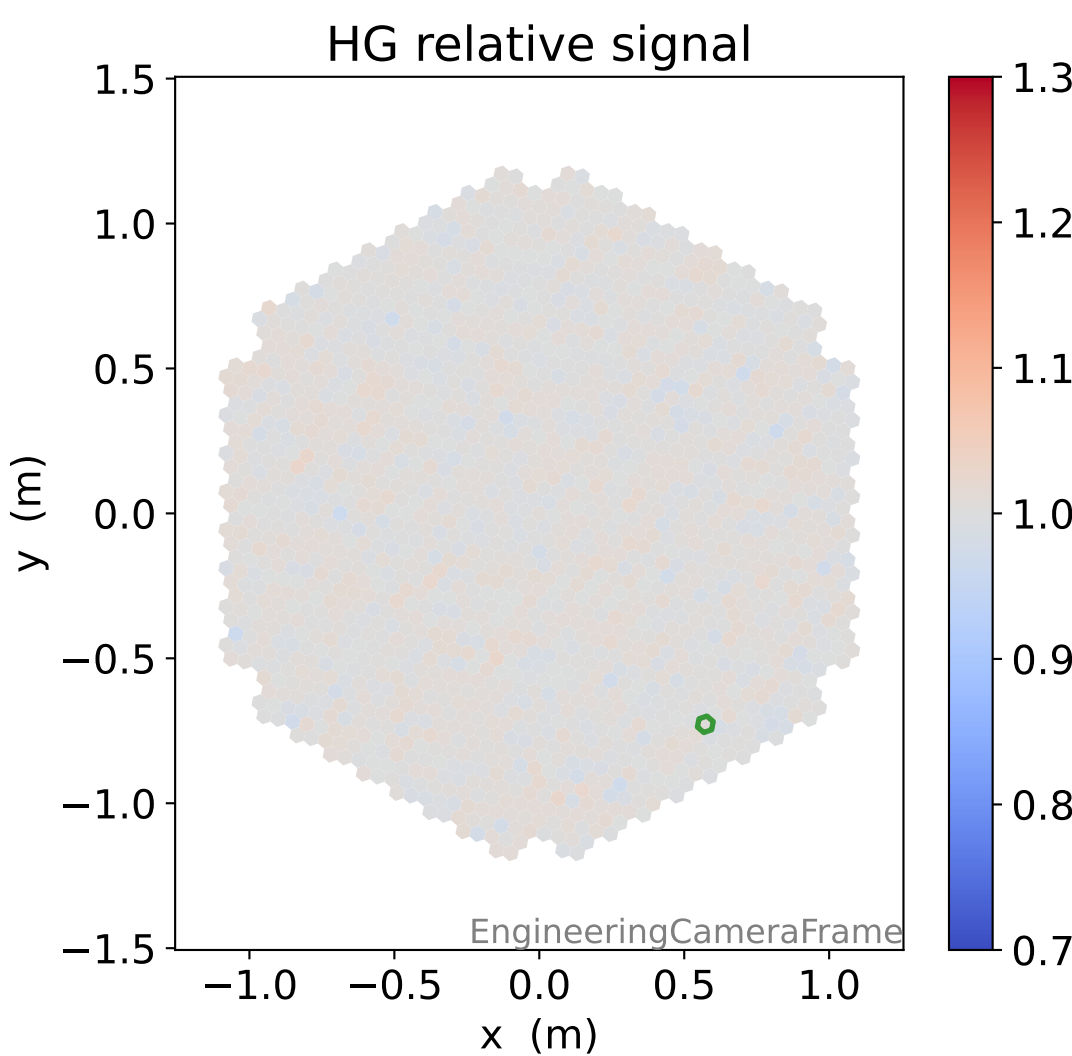
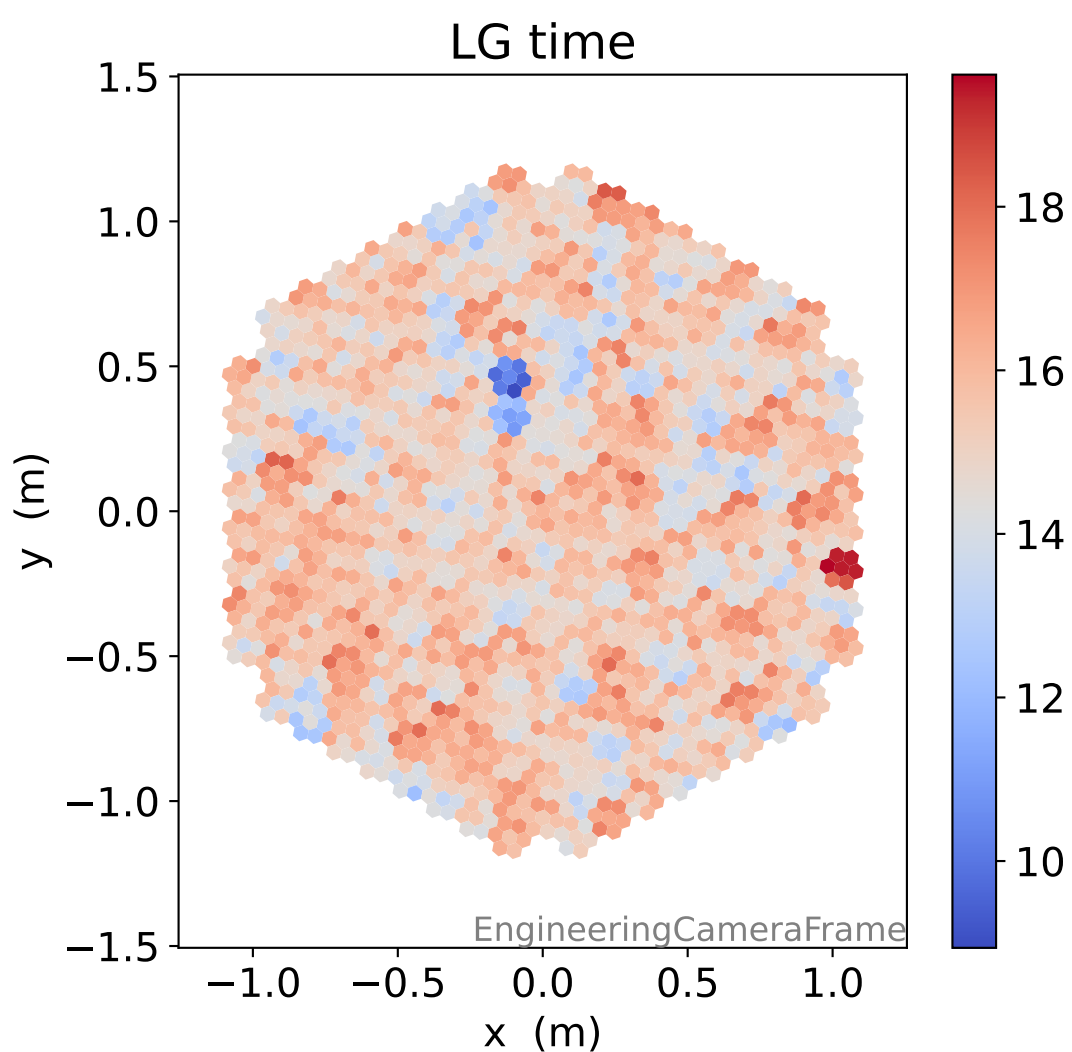
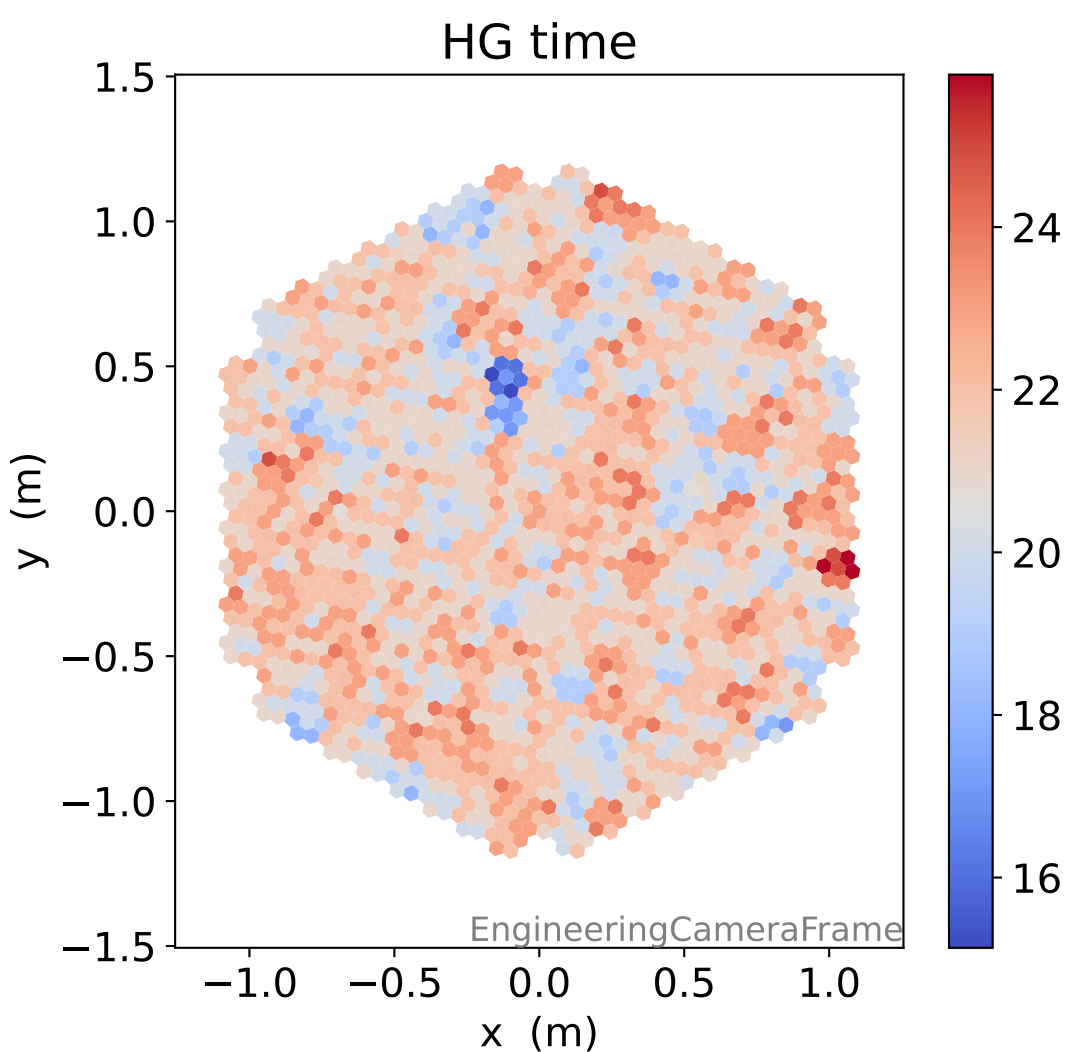


Run 9494

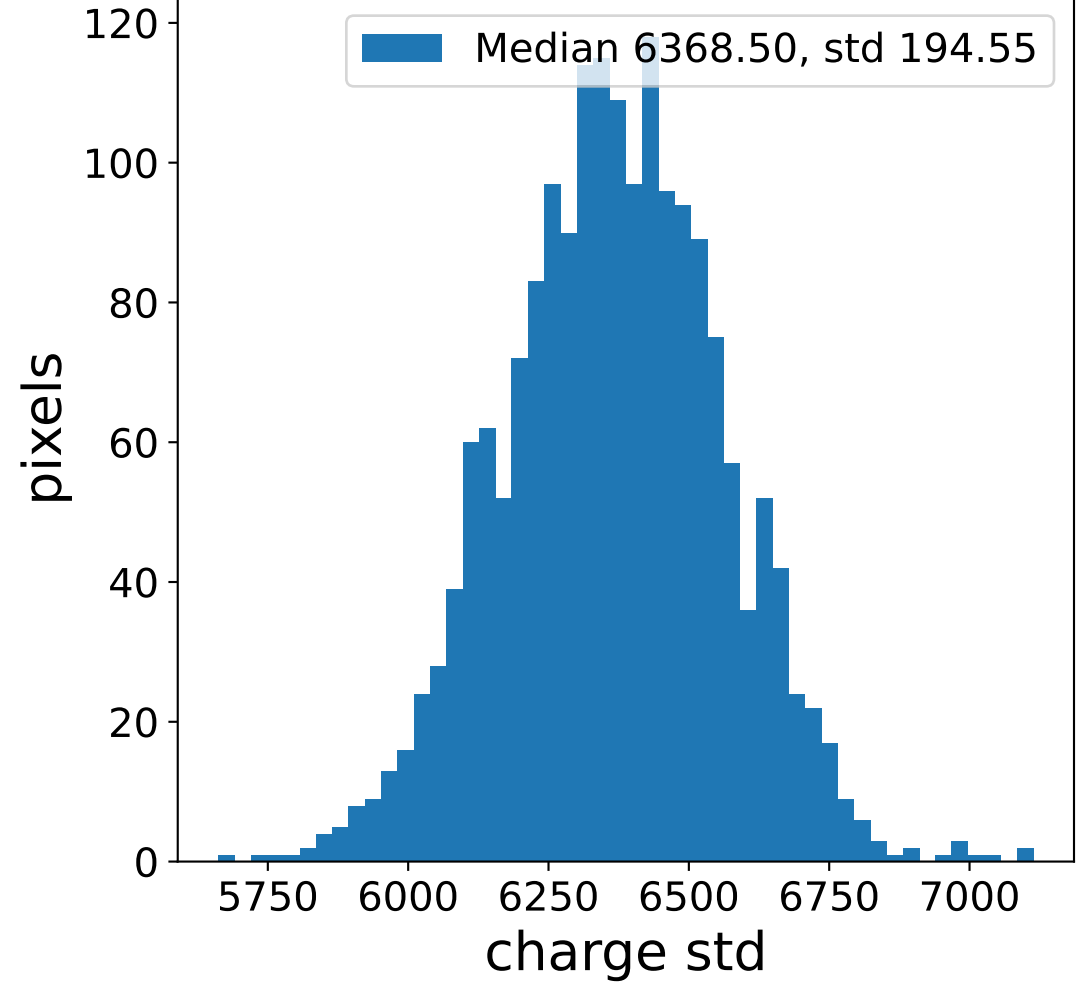
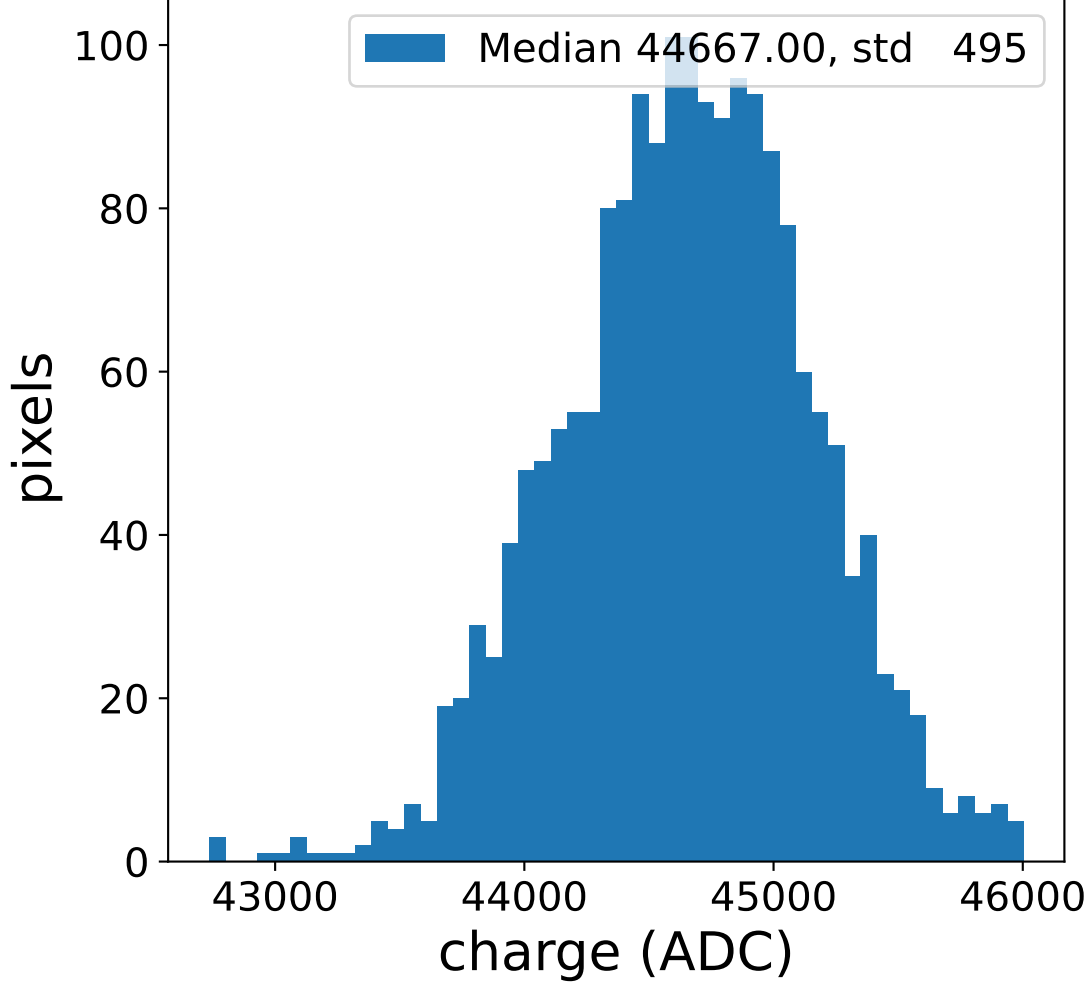


Run 9494

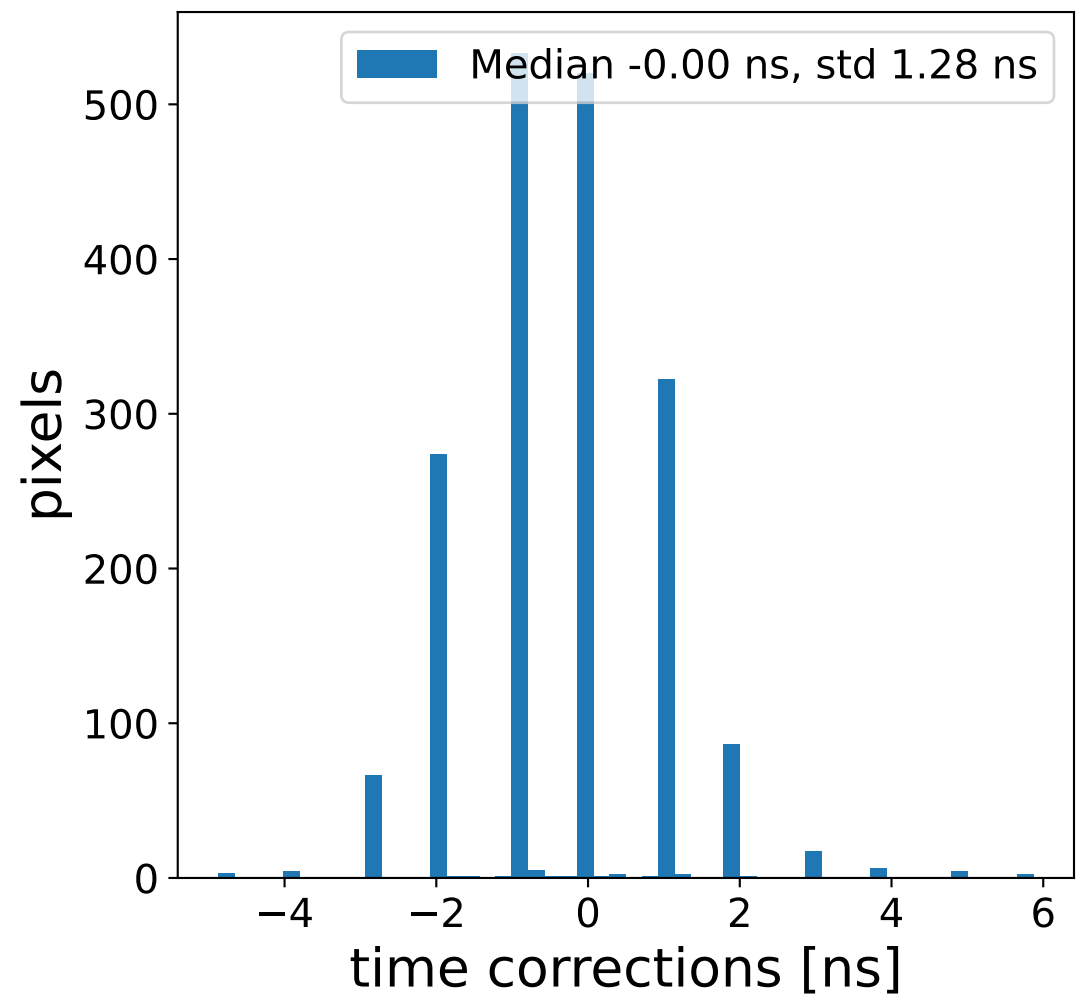
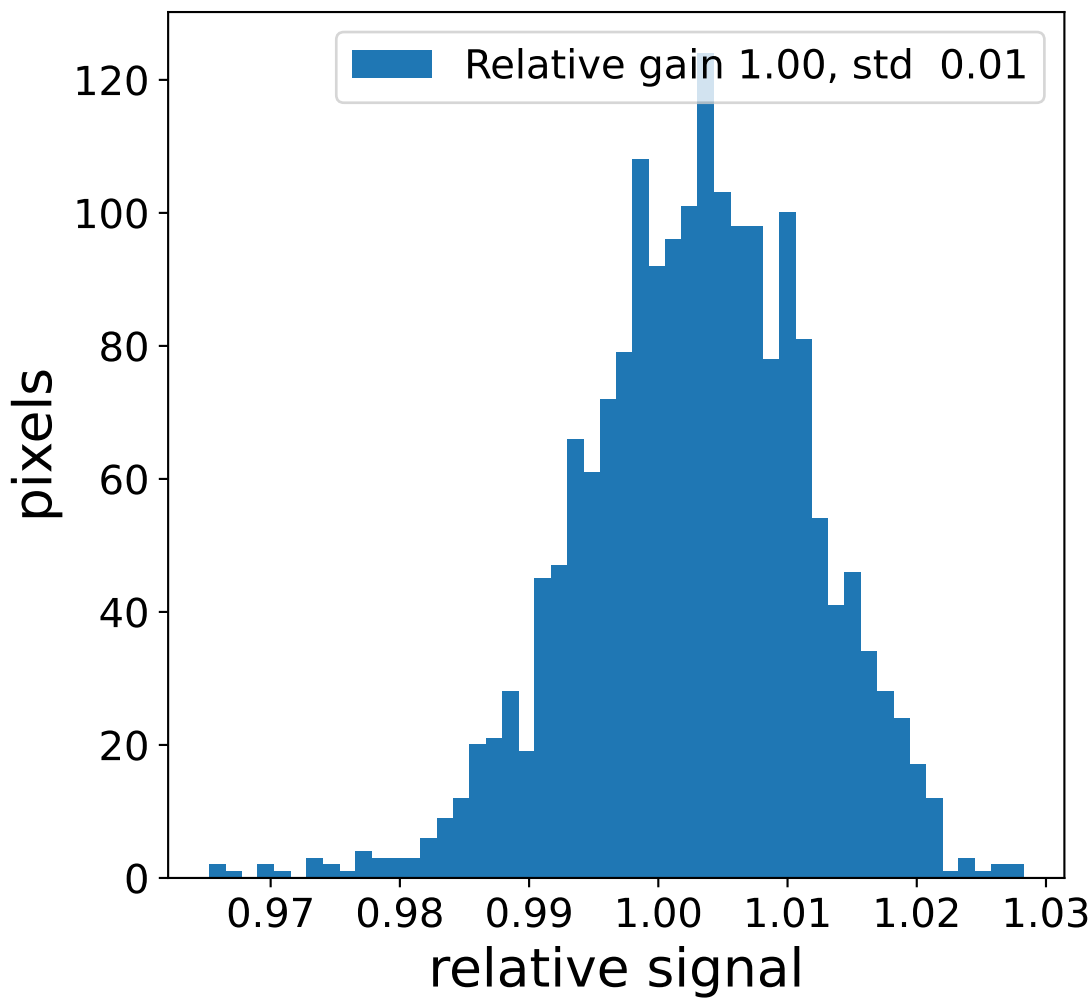
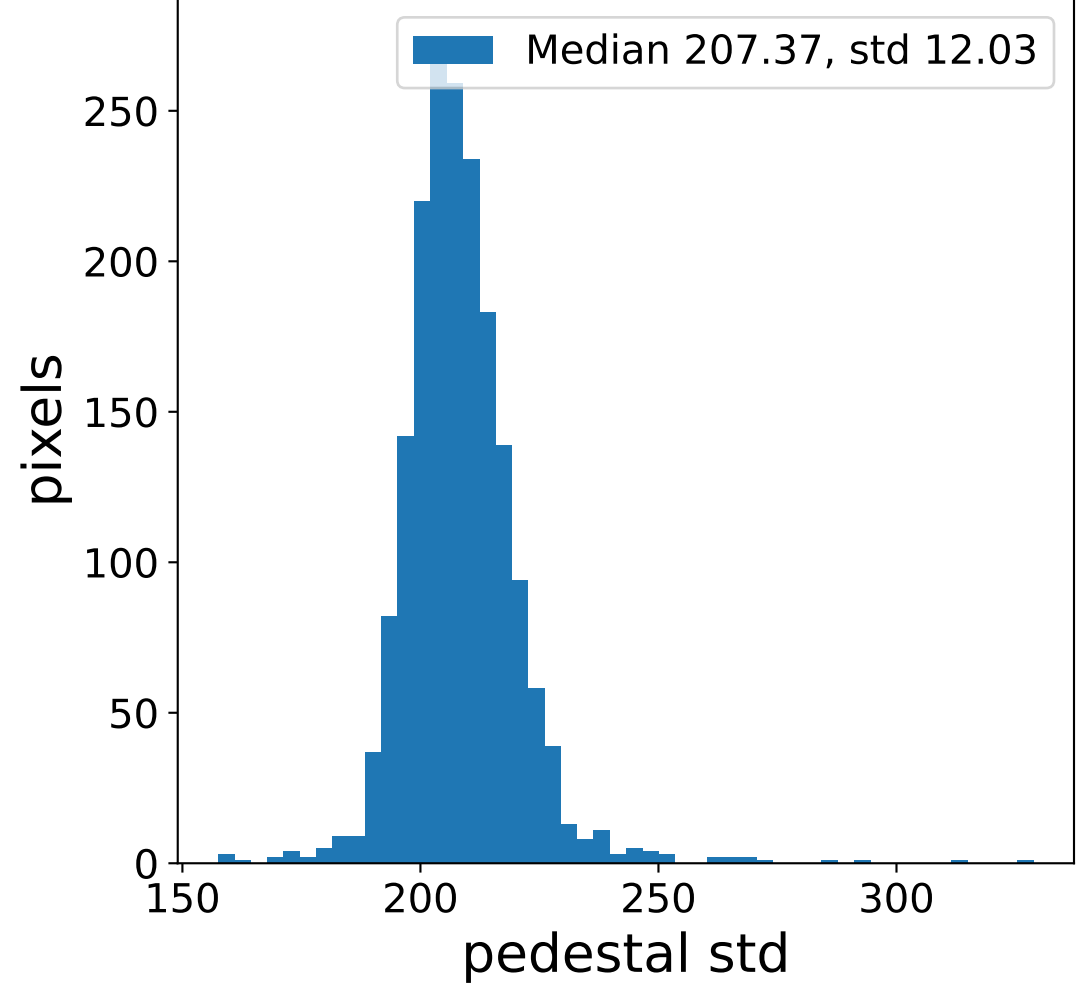
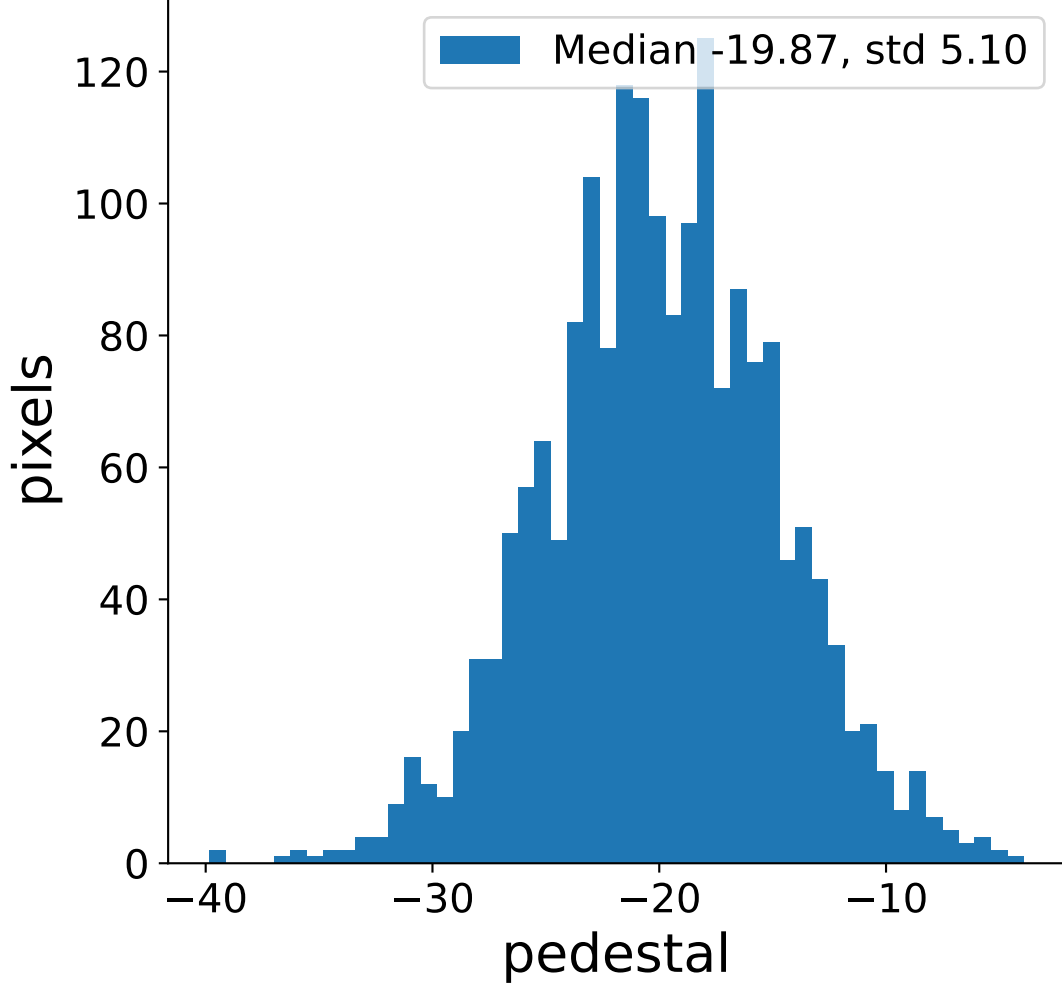


Run 9494 channel: HG

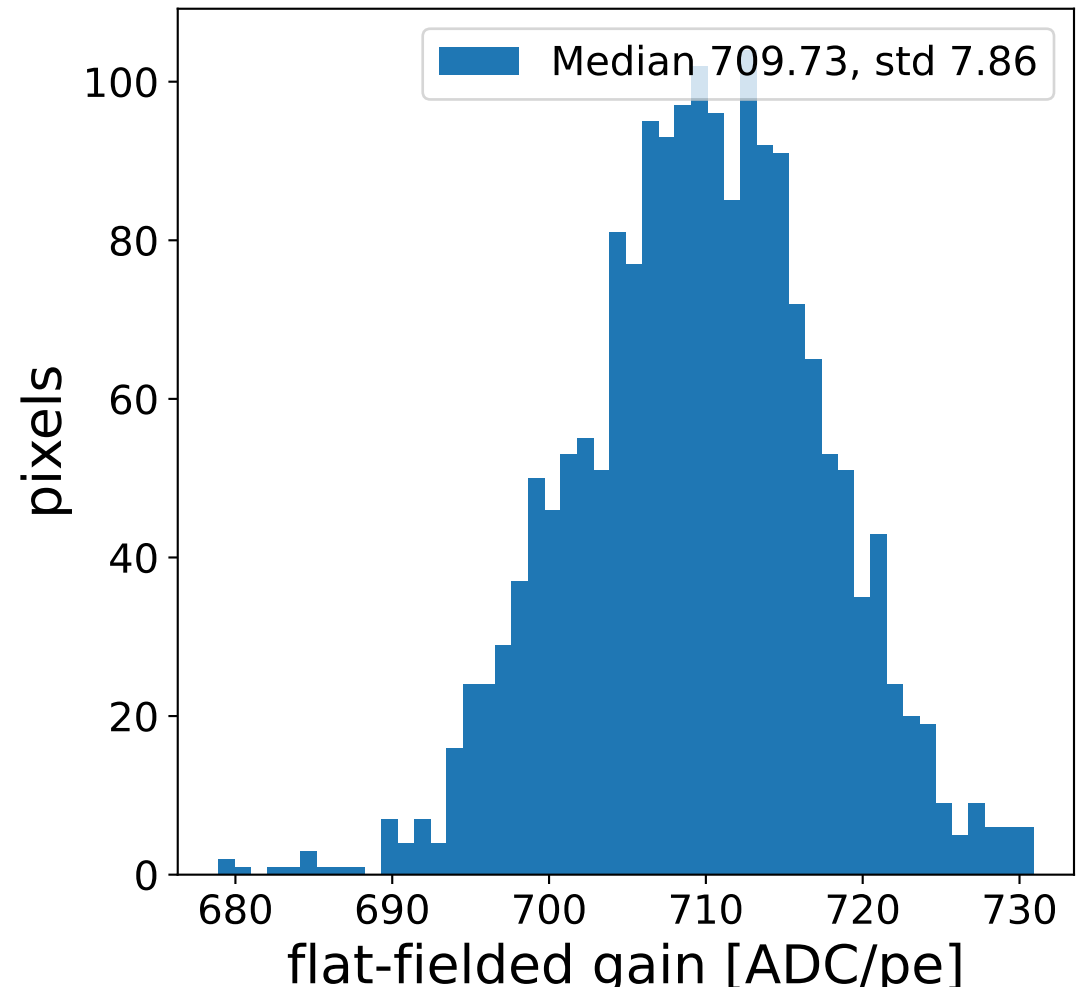
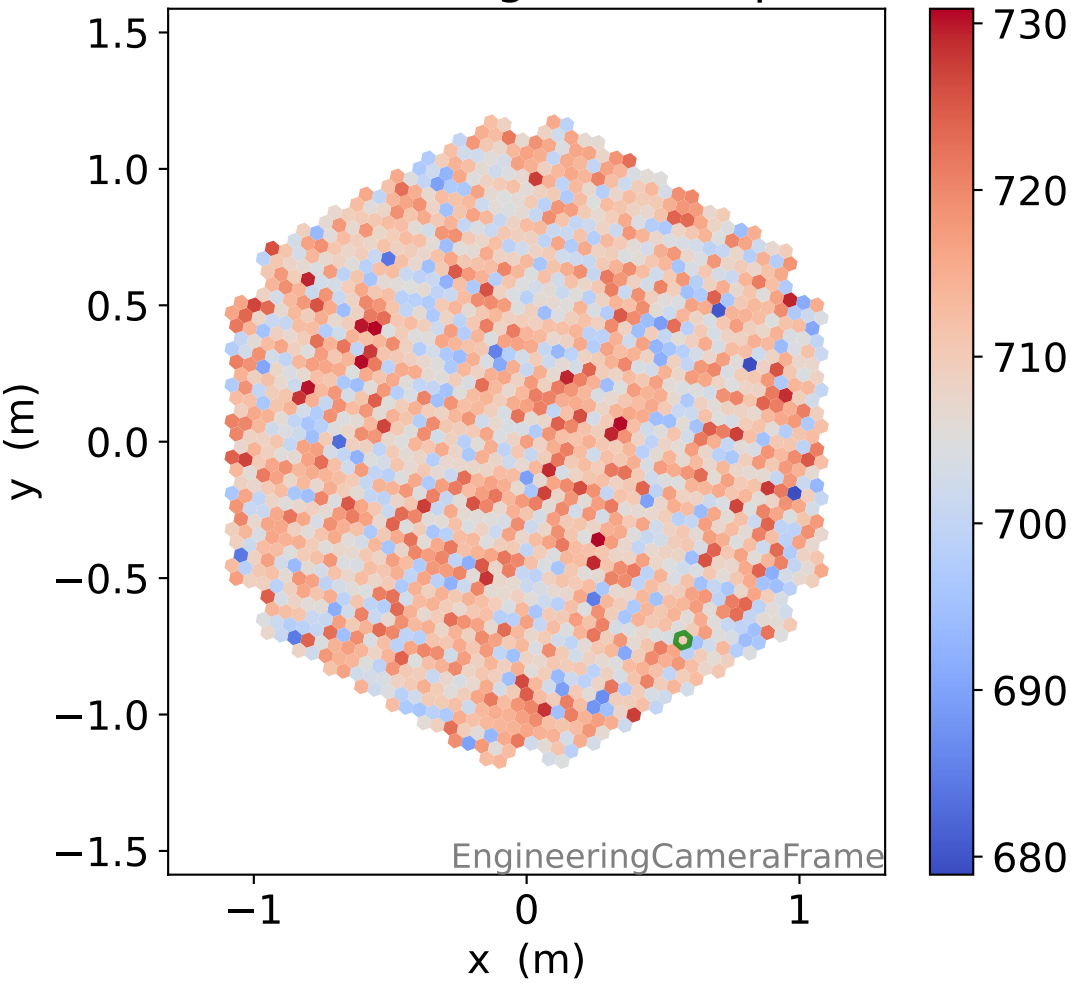
FF sample of 10000 events



pedestal sample of 10000 events

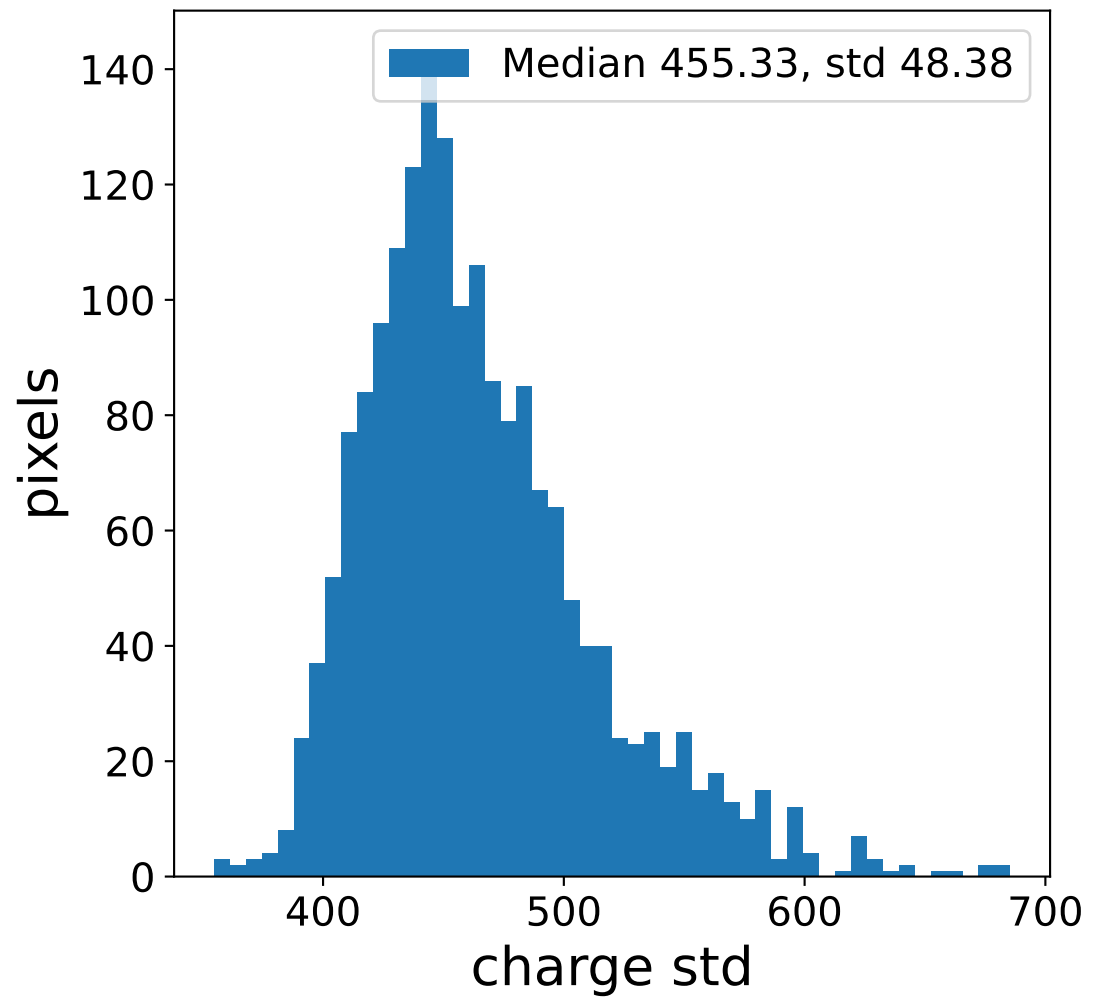
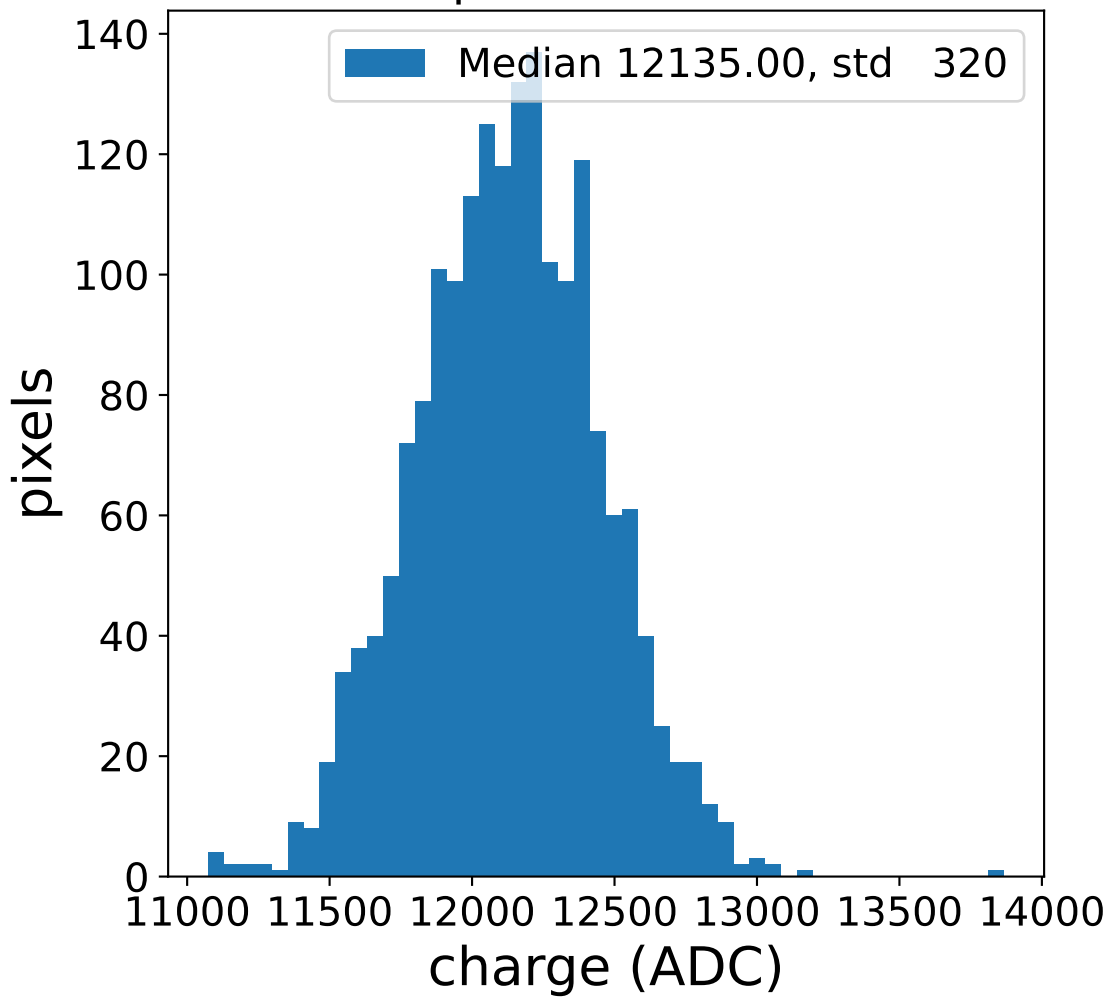


flat-fielded gain [ADC/pe]

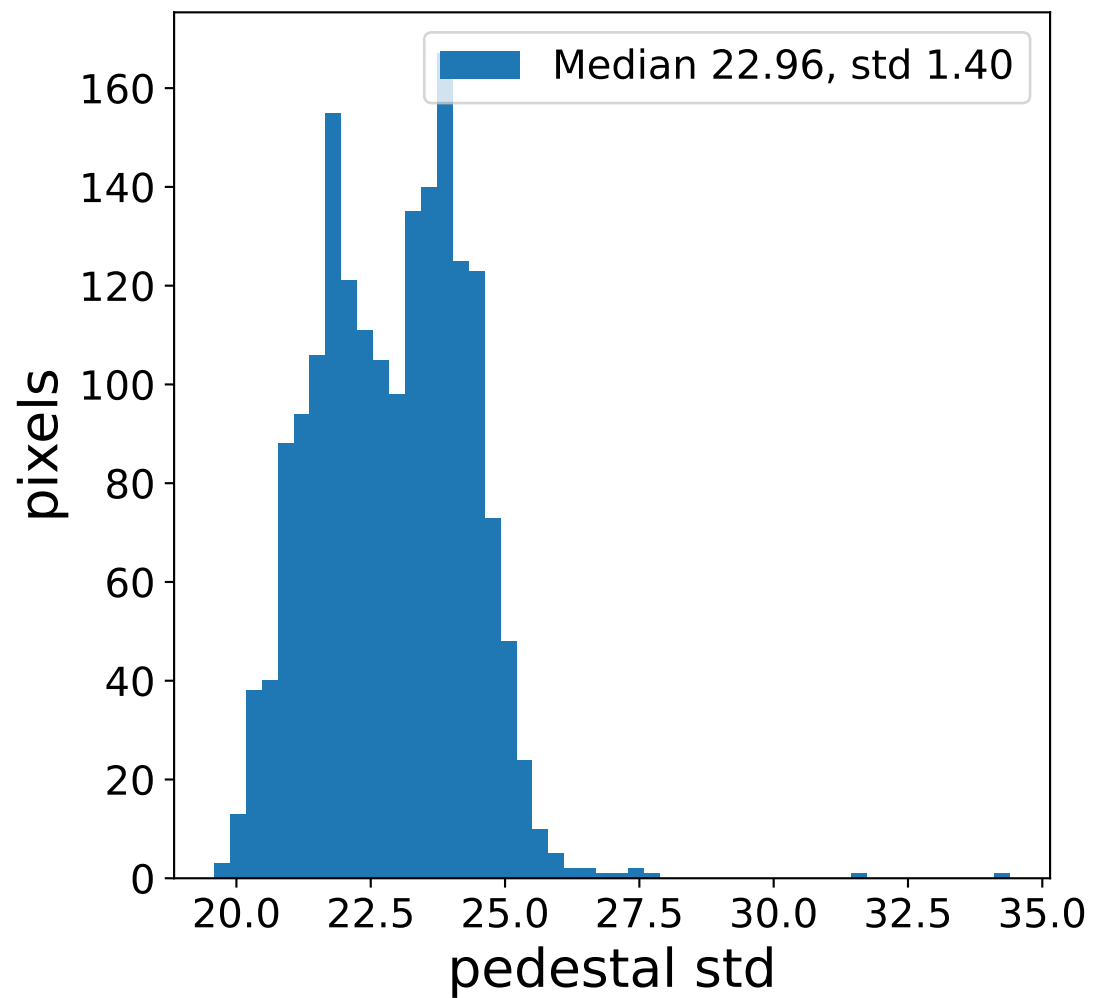
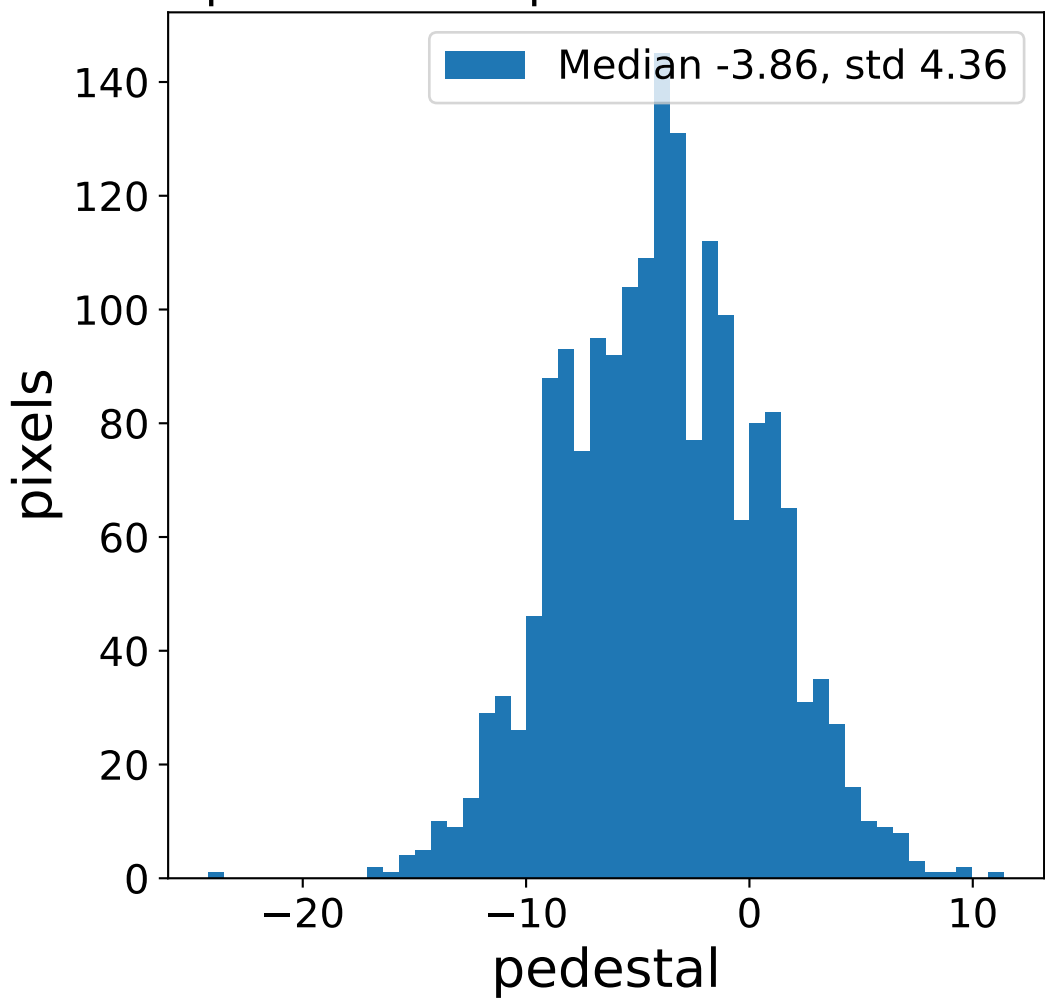


Run 9494 channel: LG

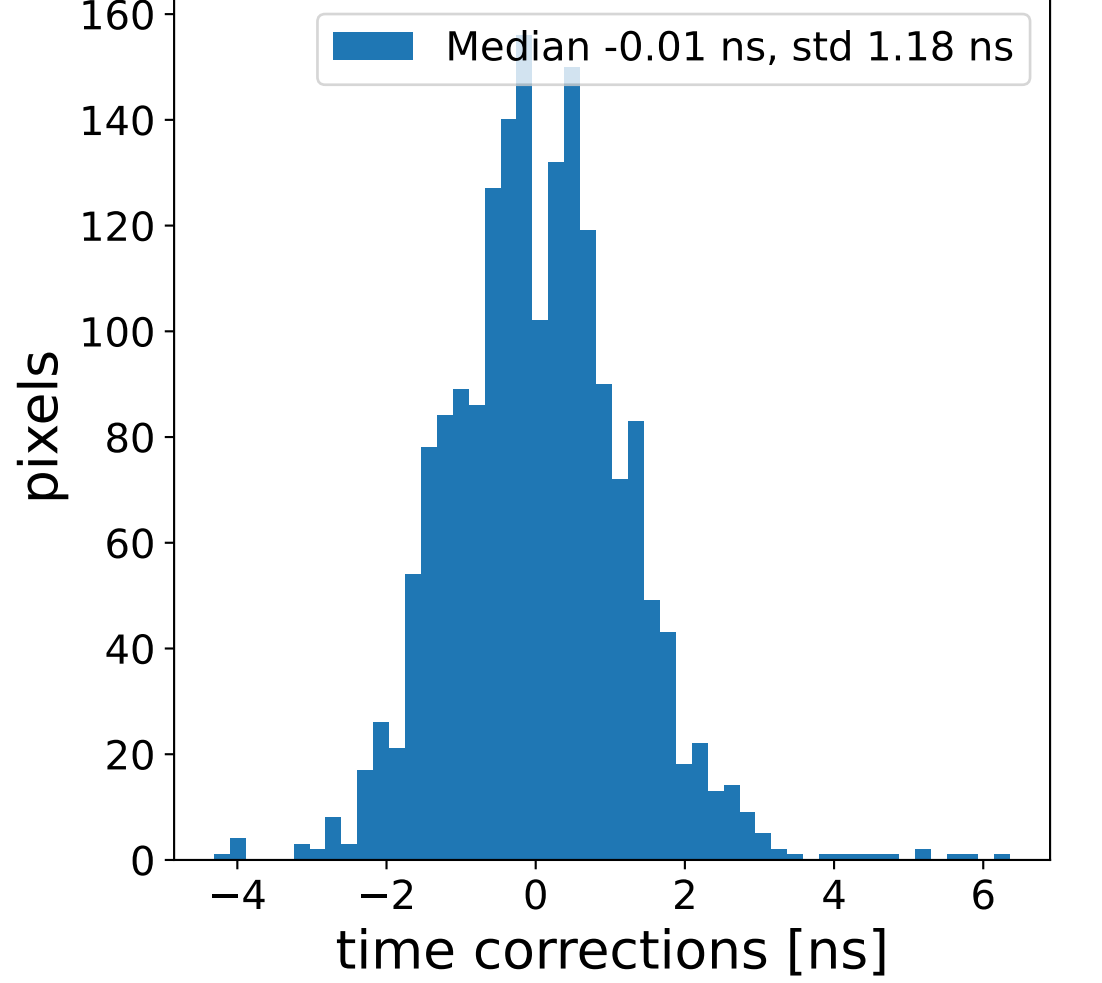
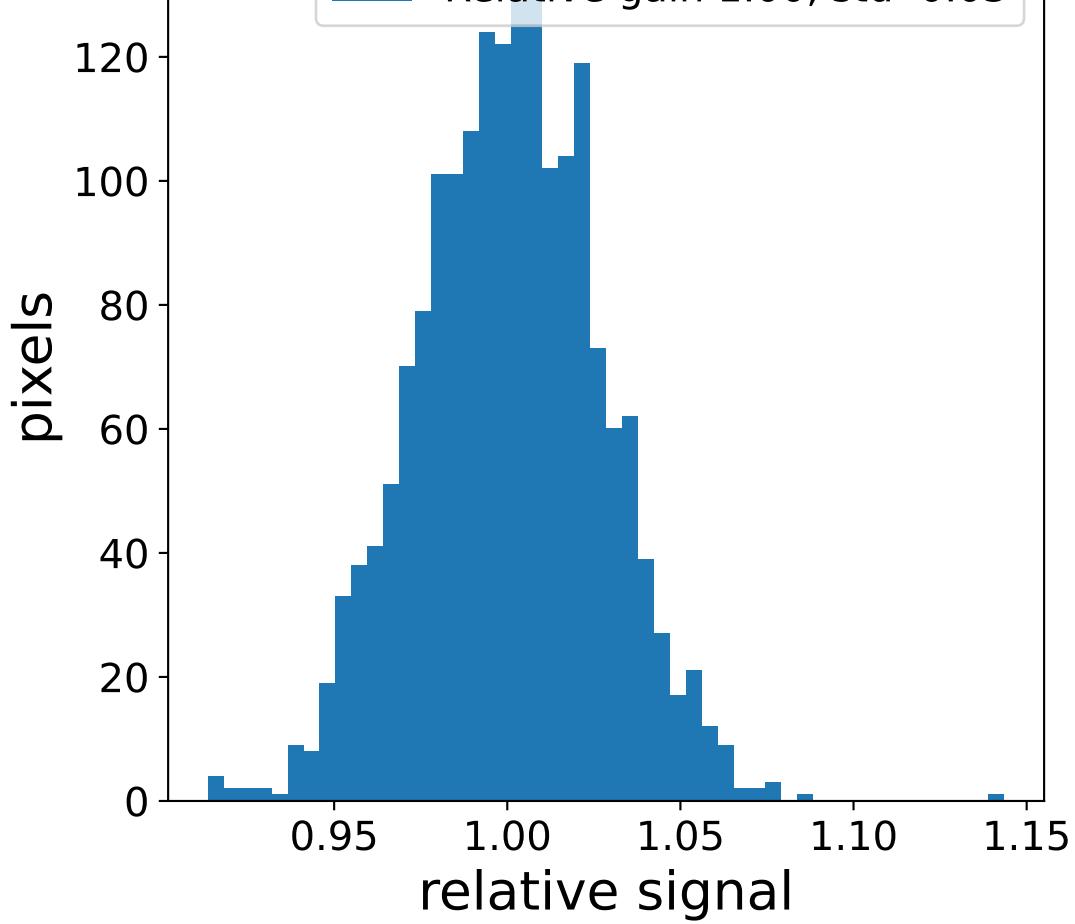
FF sample of 10000 events



pedestal sample of 10000 events



Relative gain 1.00, std 0.03



flat-fielded gain [ADC/pe]

