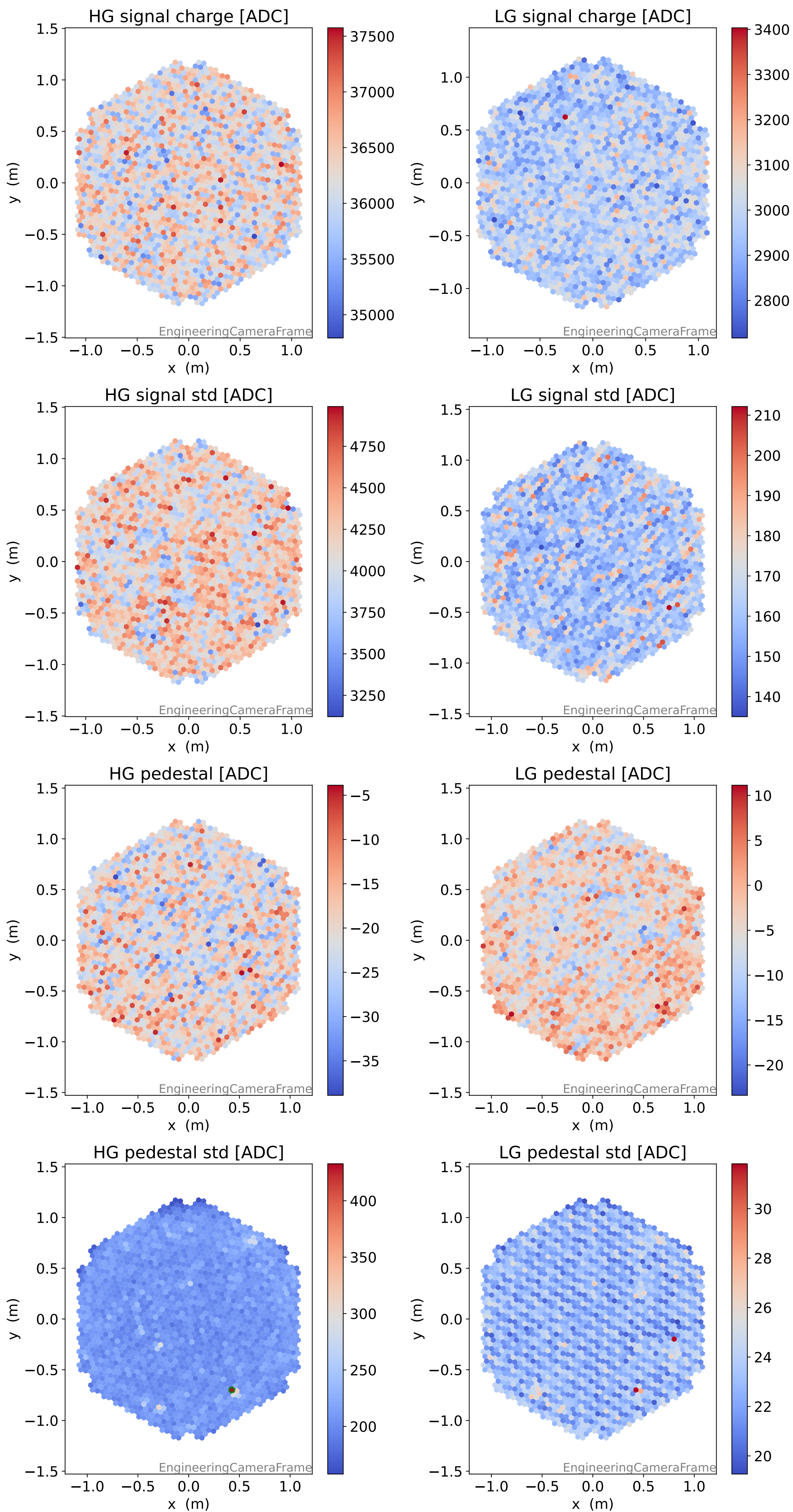
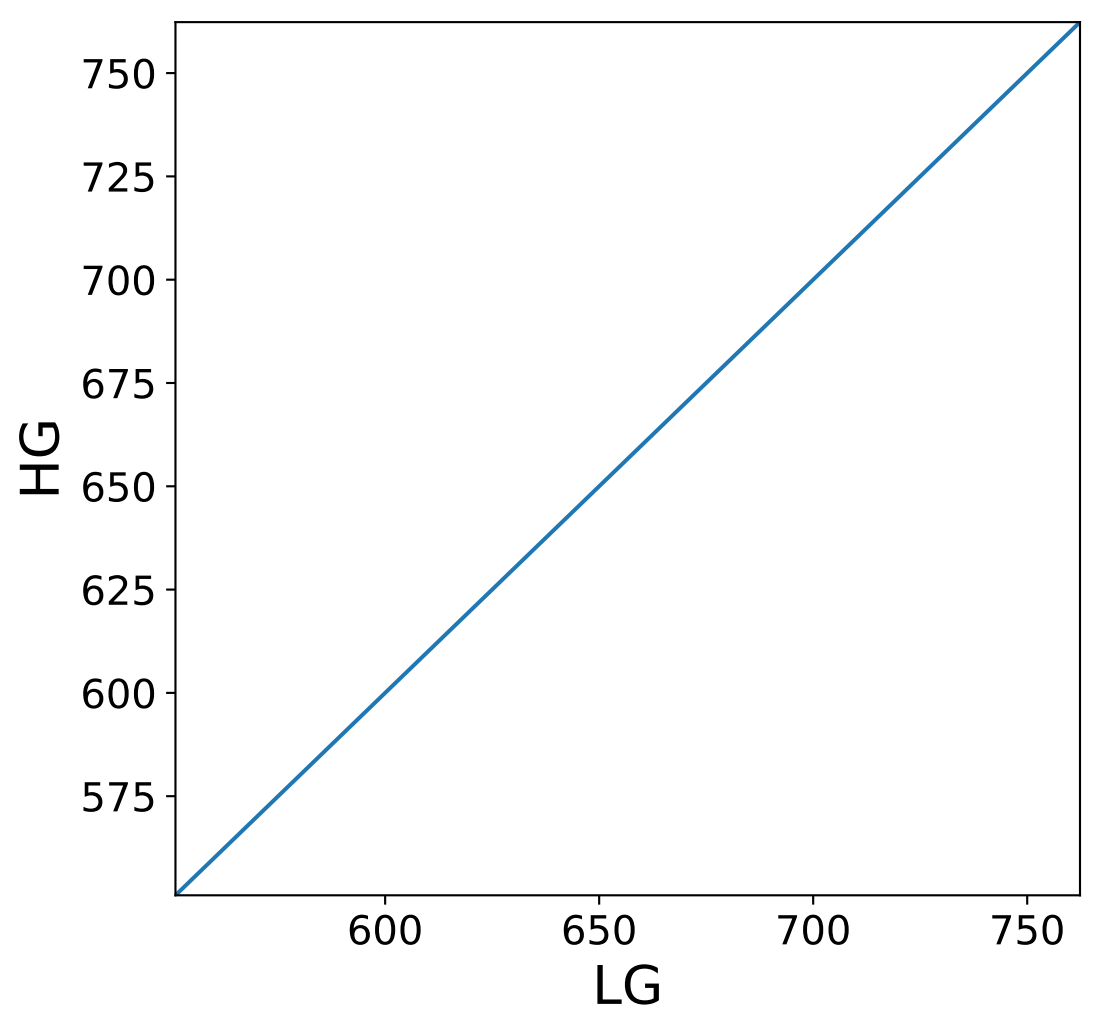
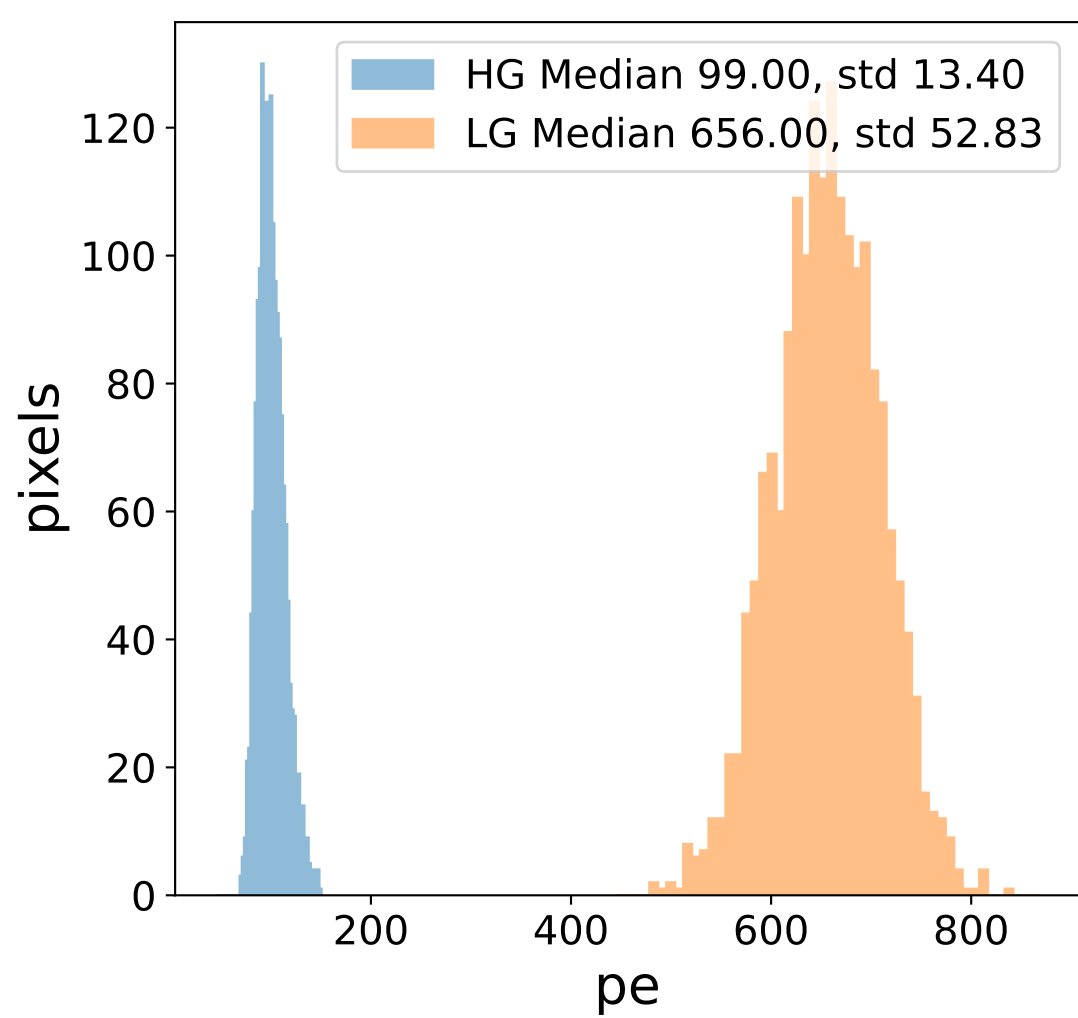
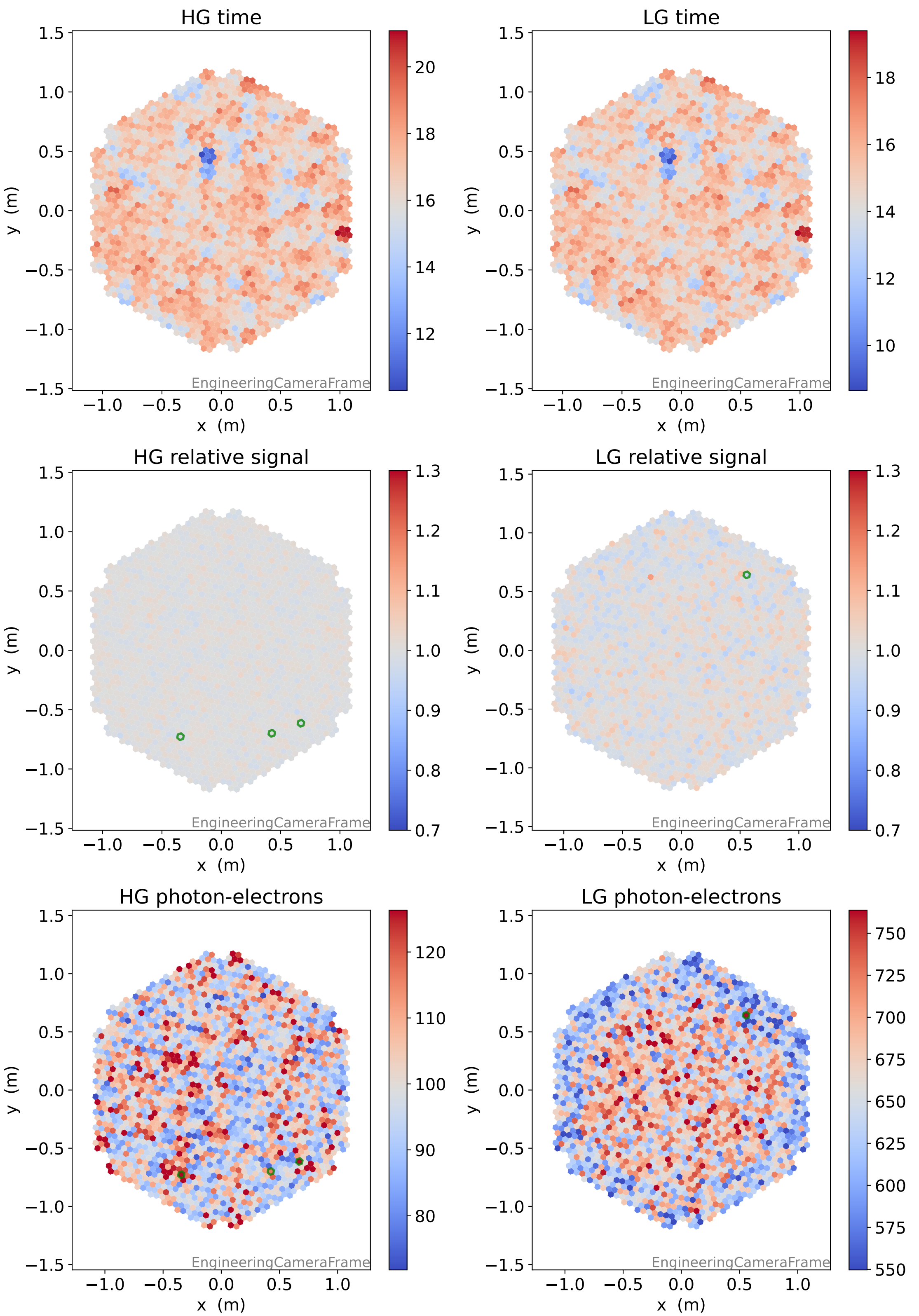


Run 9496

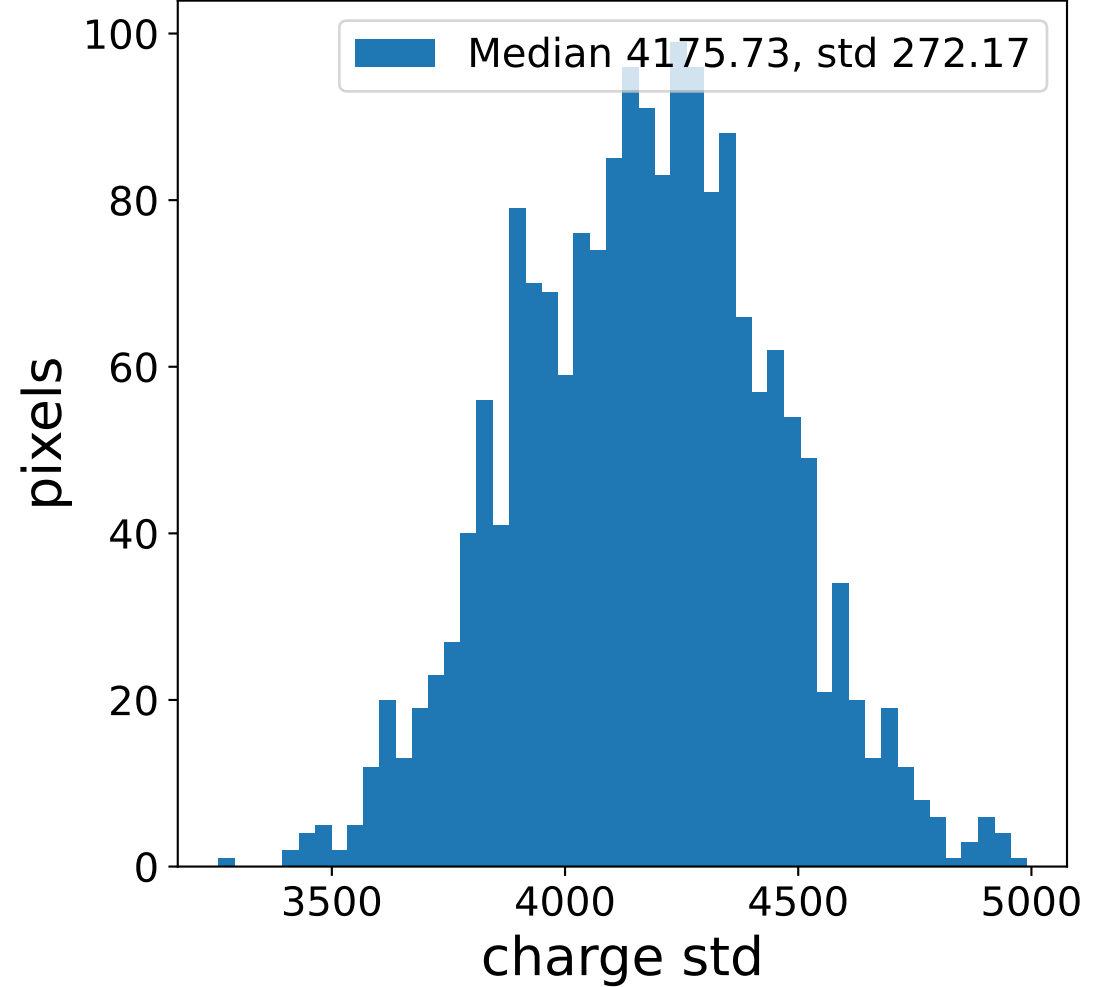
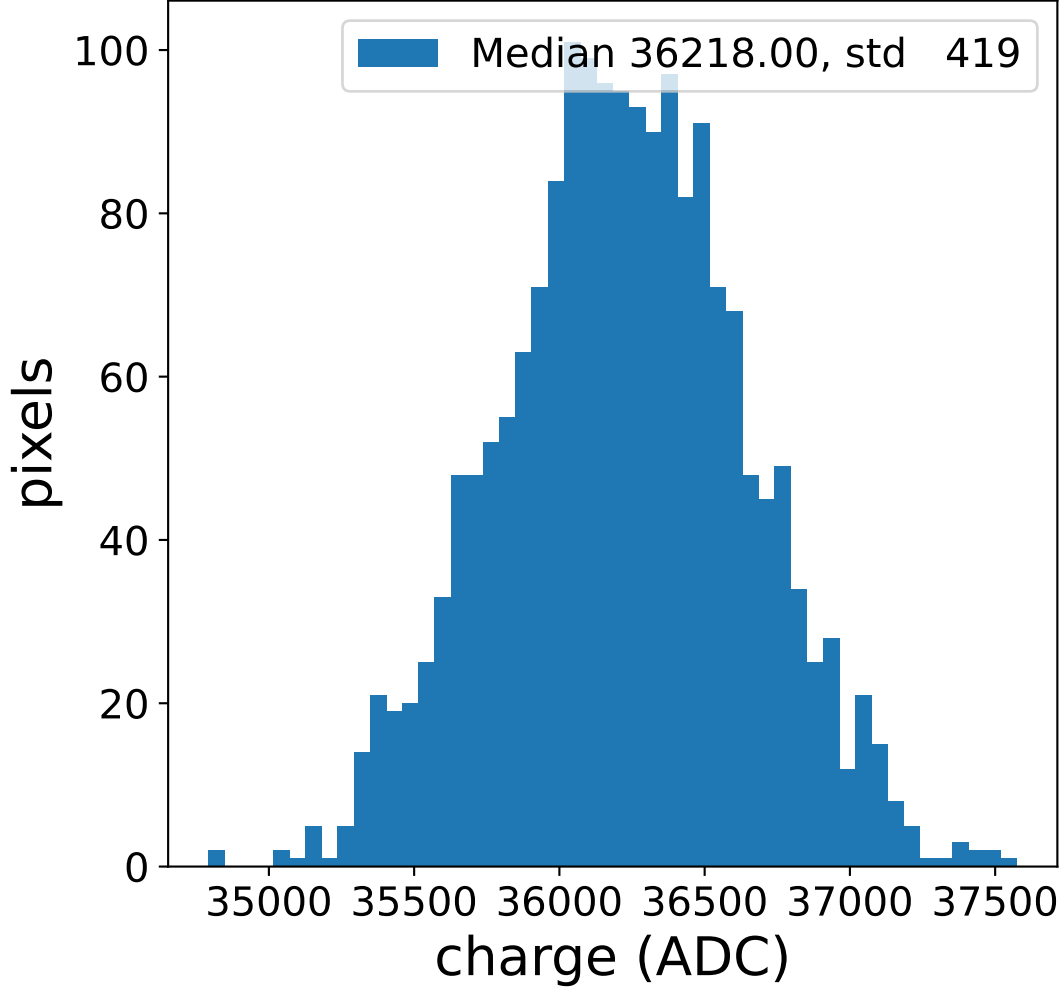


Run 9496

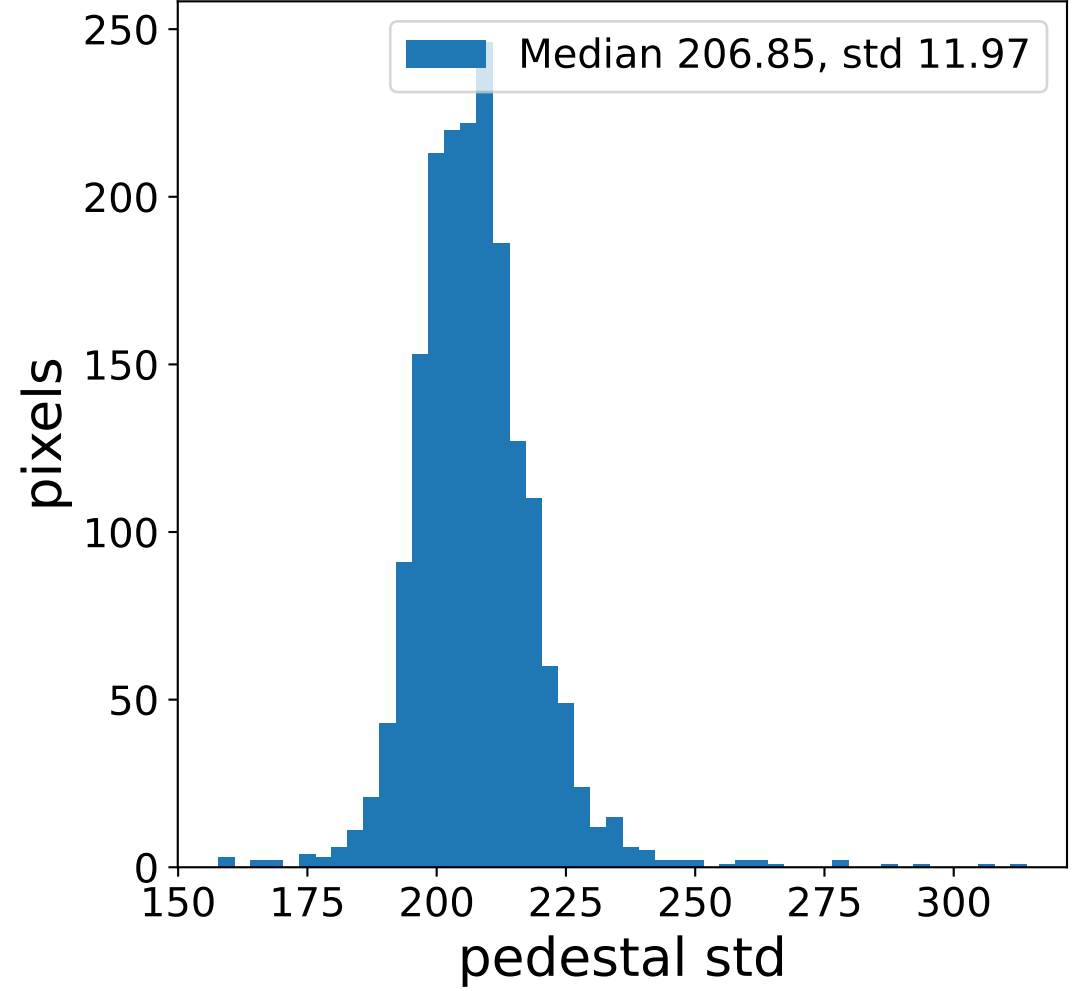
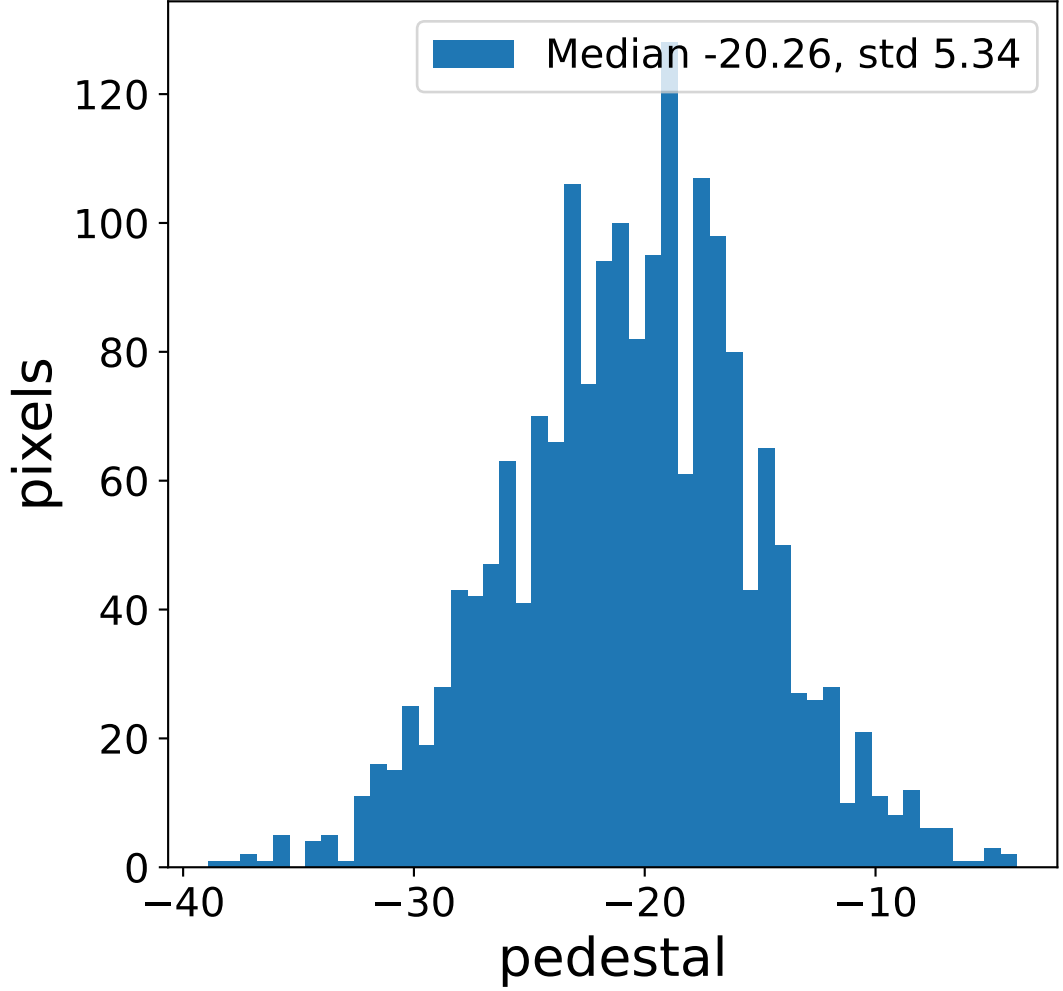


Run 9496 channel: HG

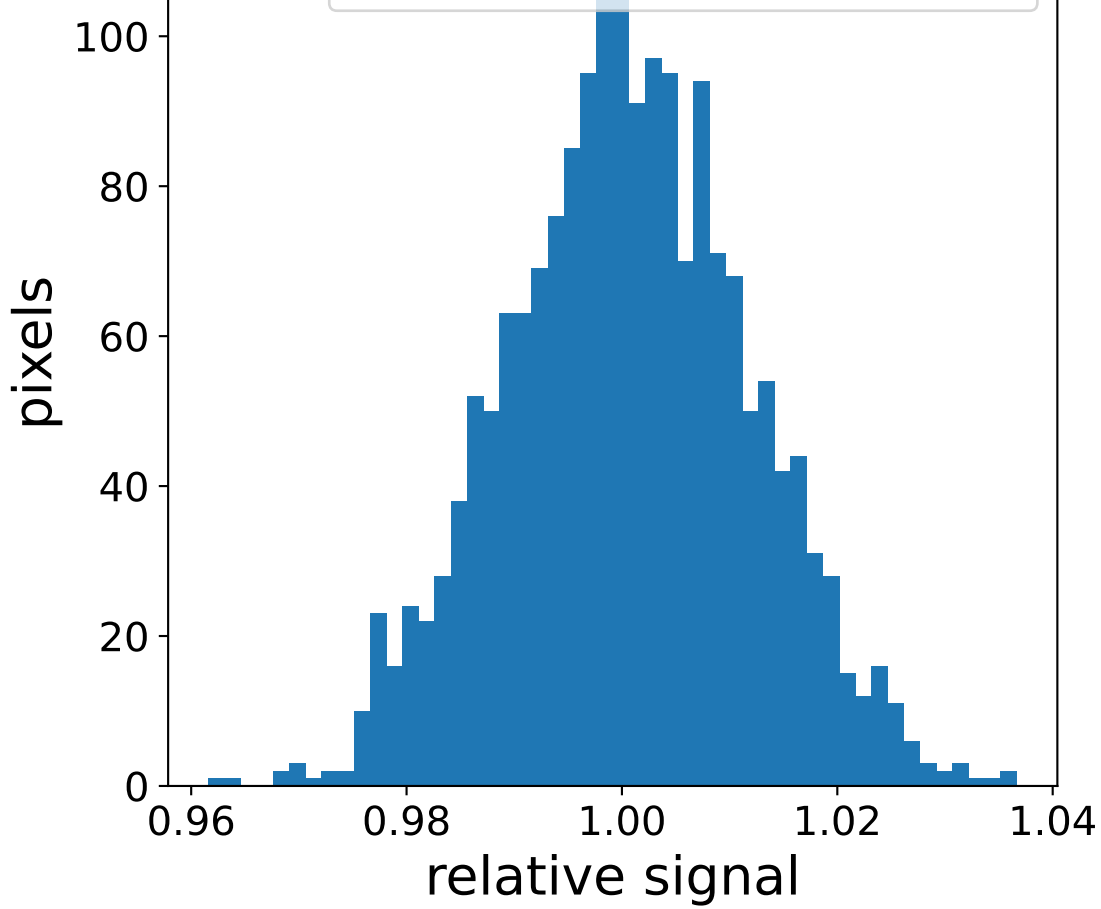
FF sample of 10000 events



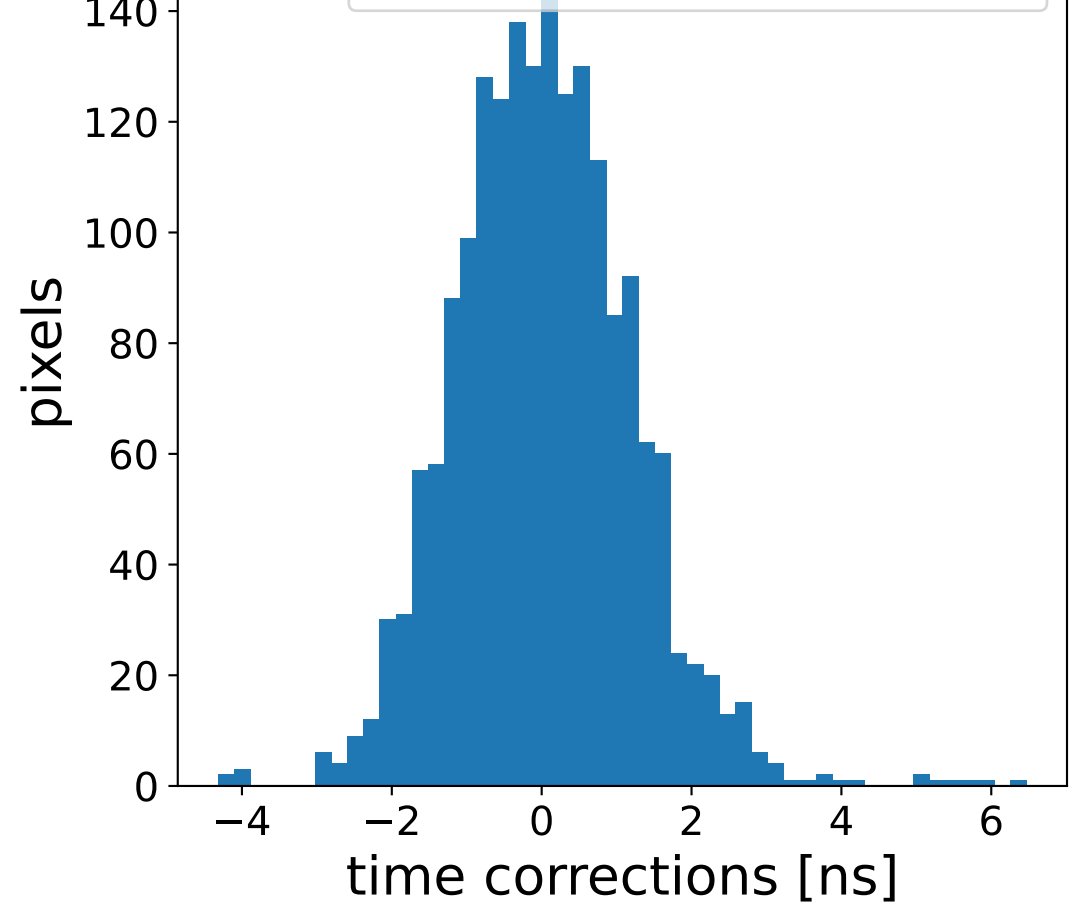
pedestal sample of 10000 events



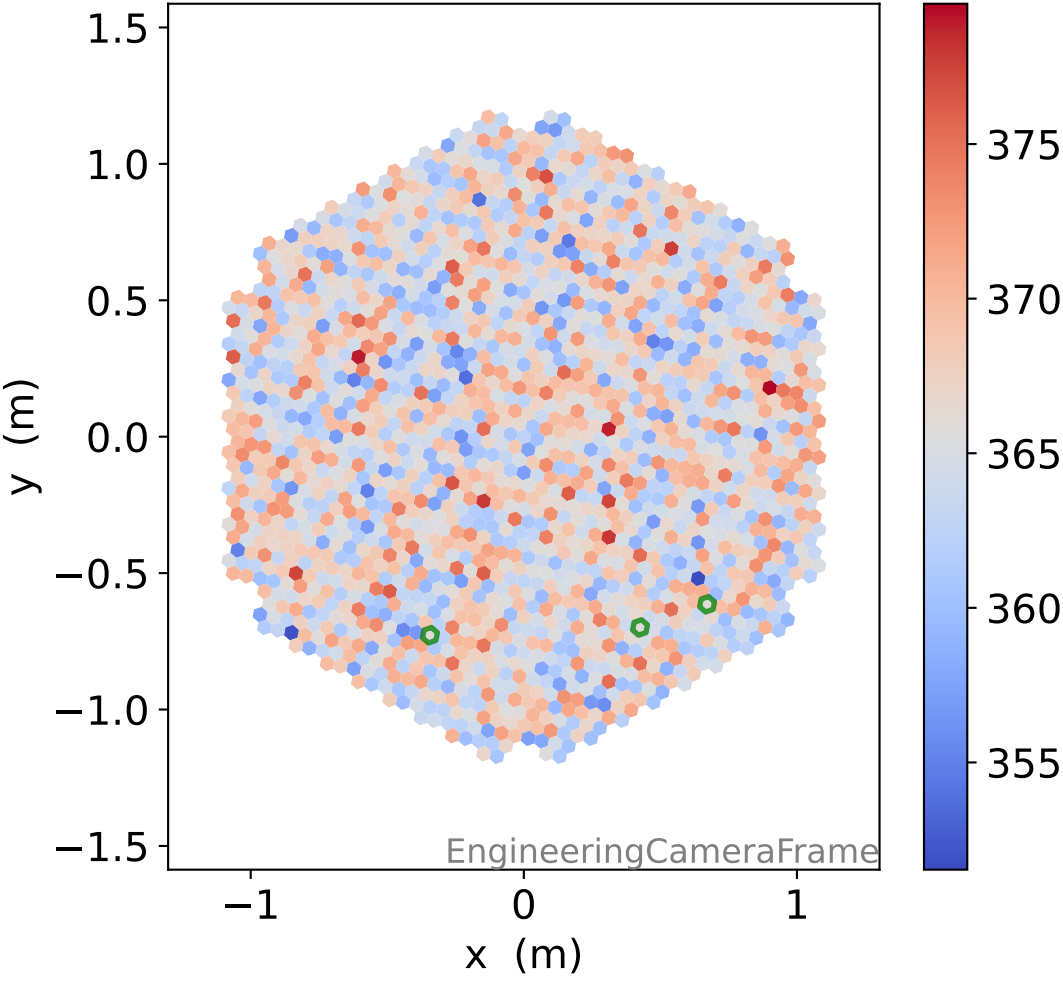
Relative gain 1.00, std 0.01



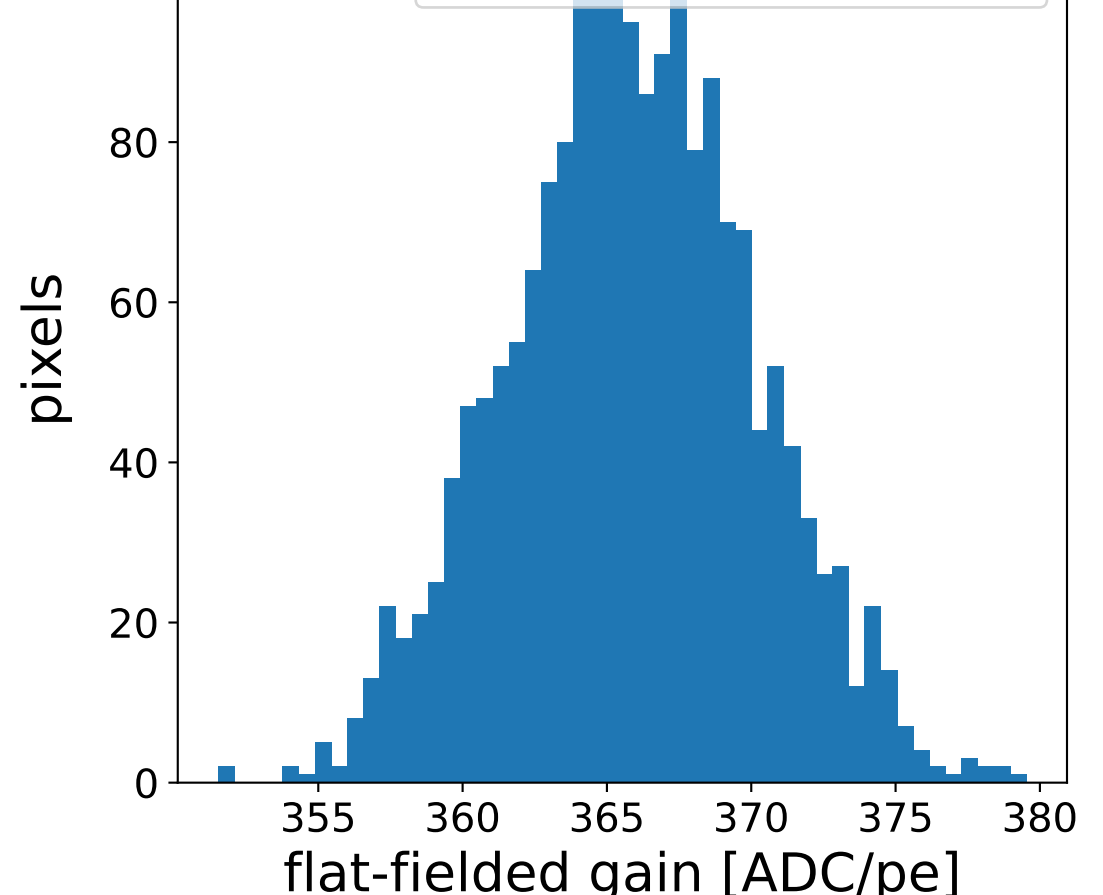
Median 0.00 ns, std 1.18 ns



flat-fielded gain [ADC/pe]

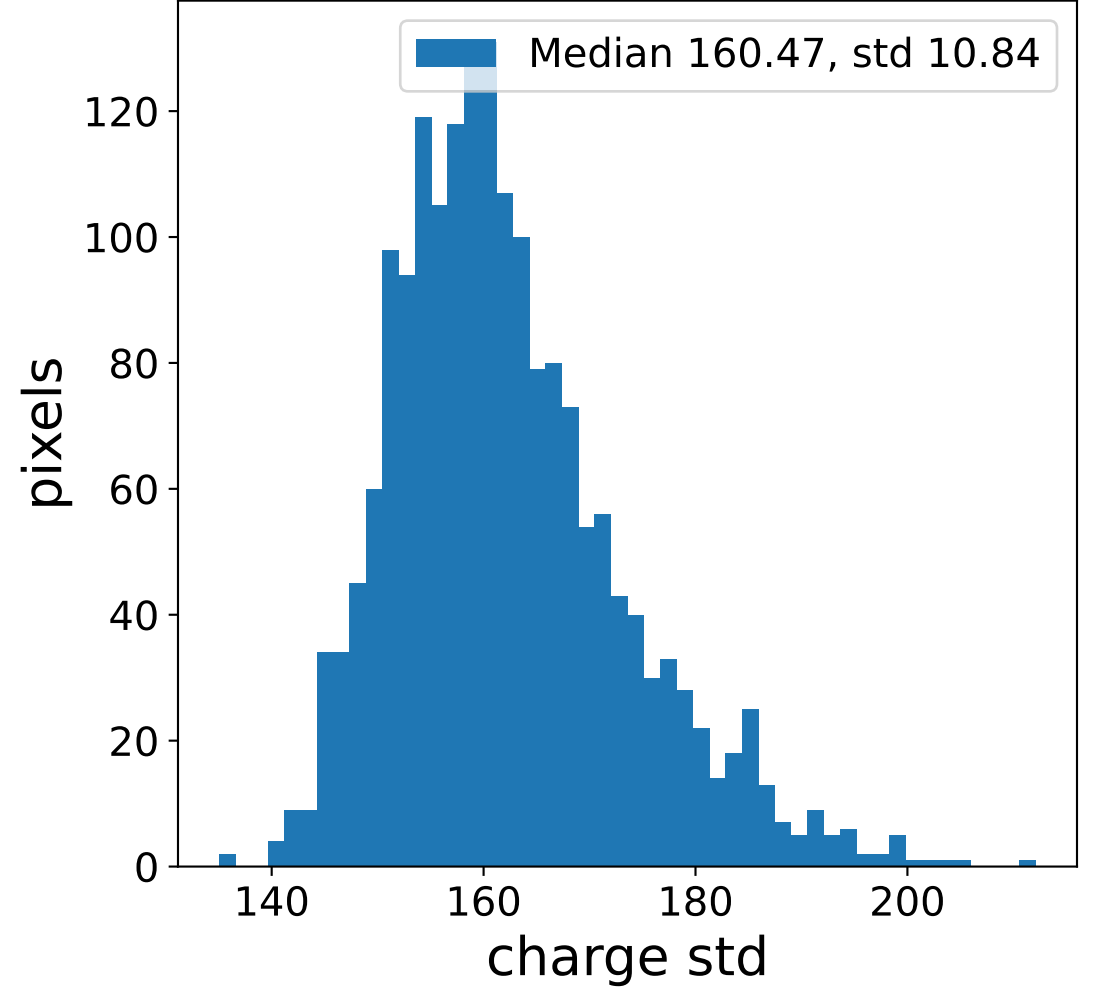
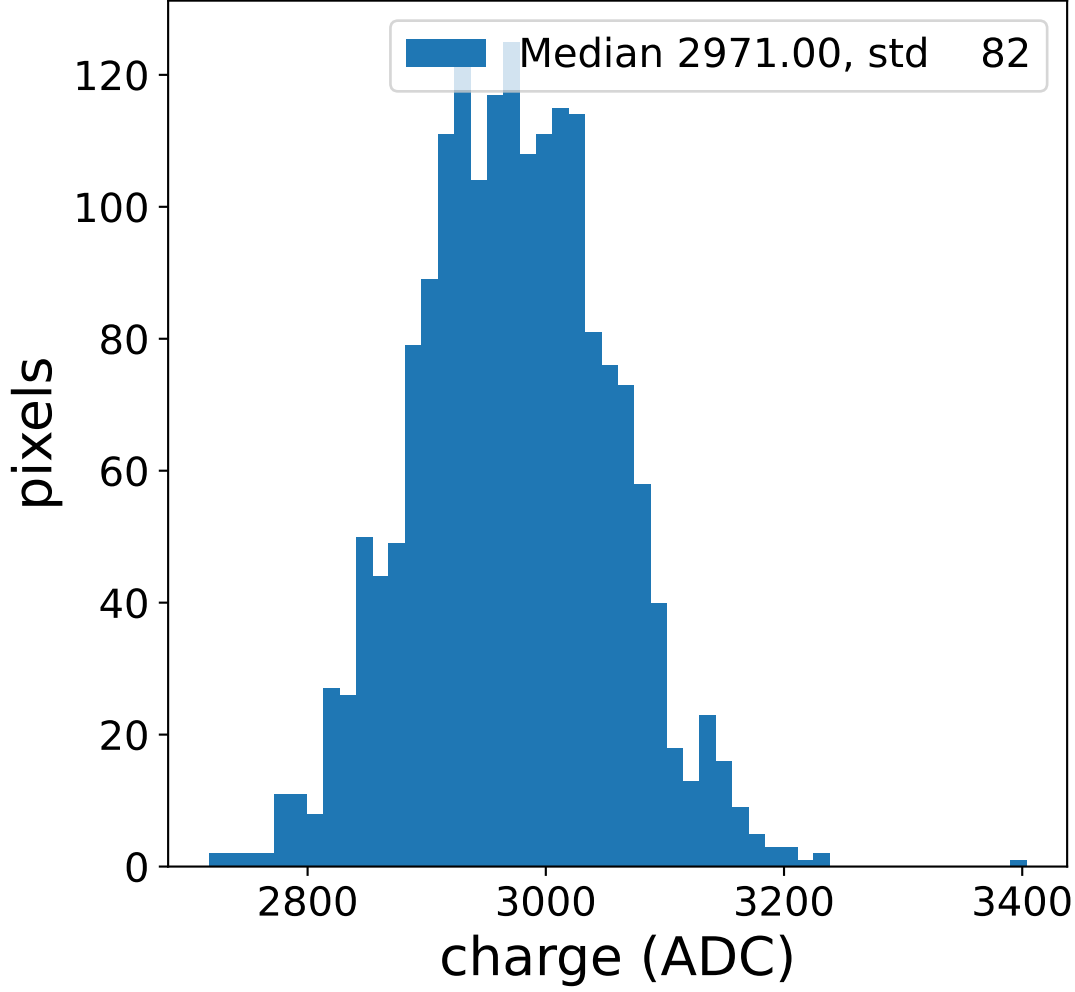


Median 365.82, std 4.24

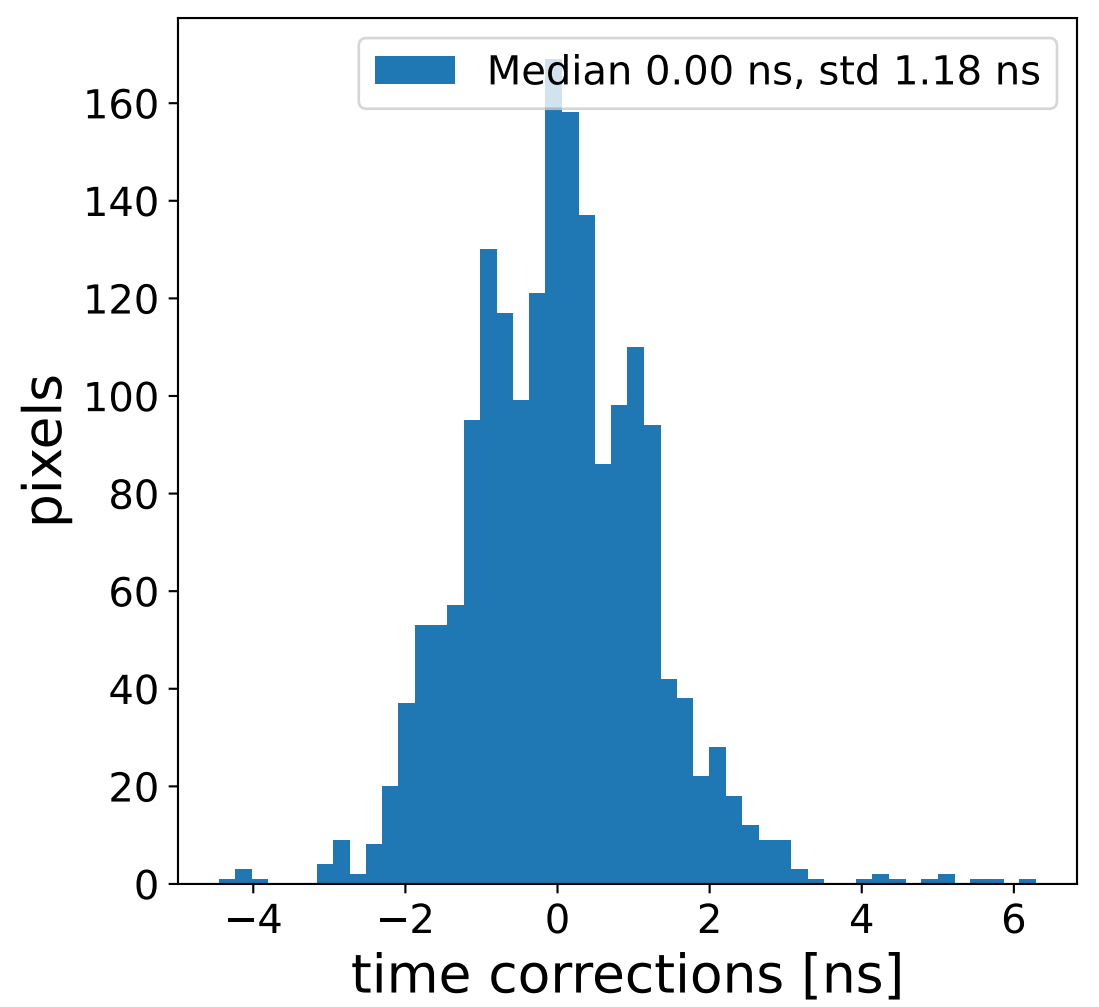
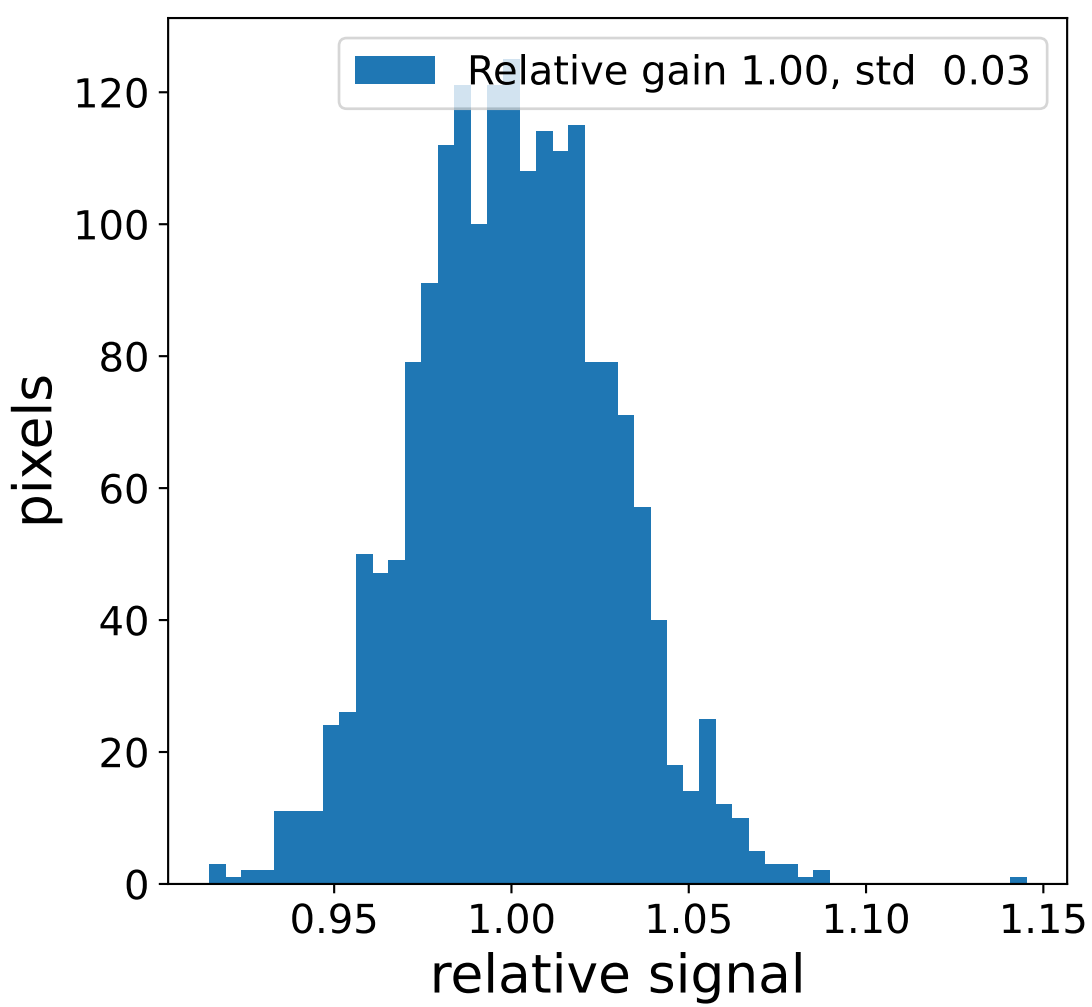
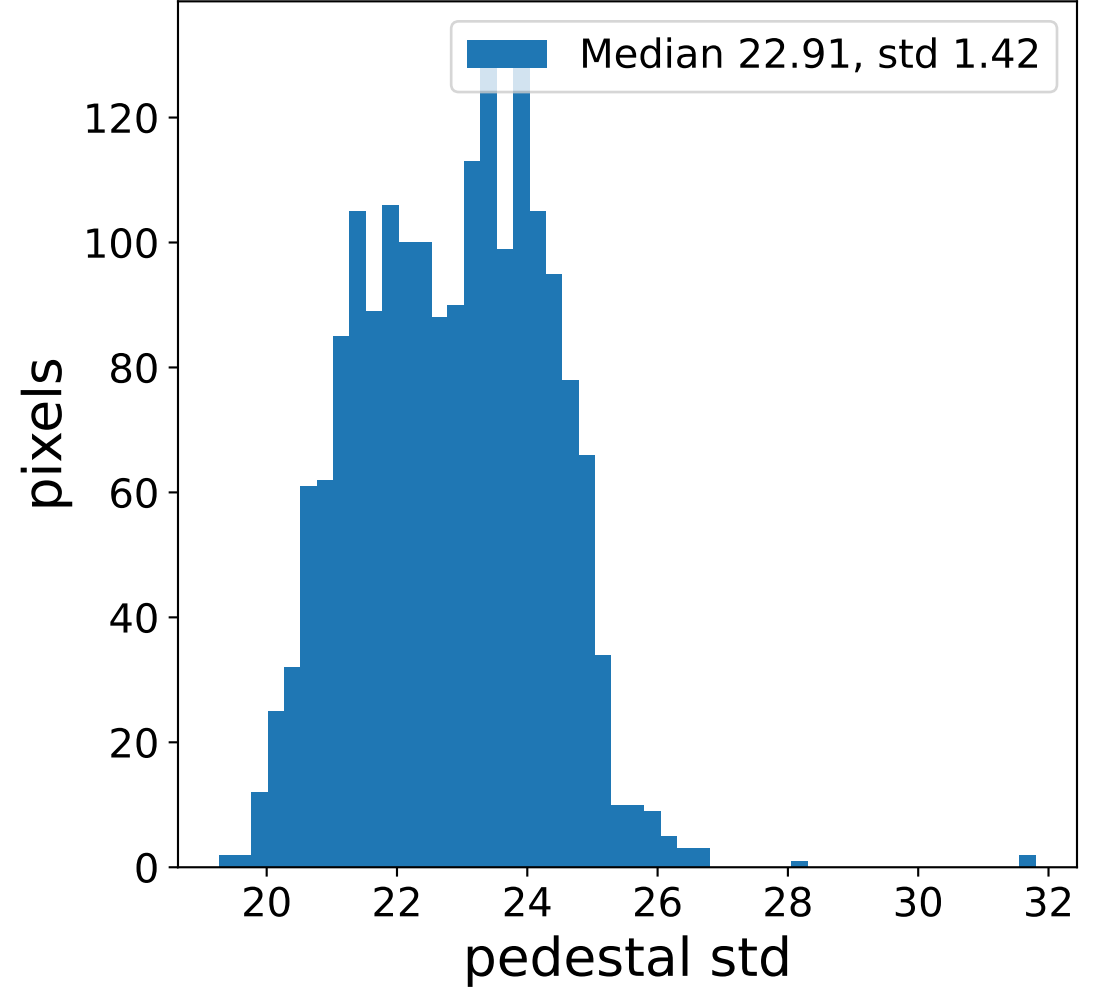
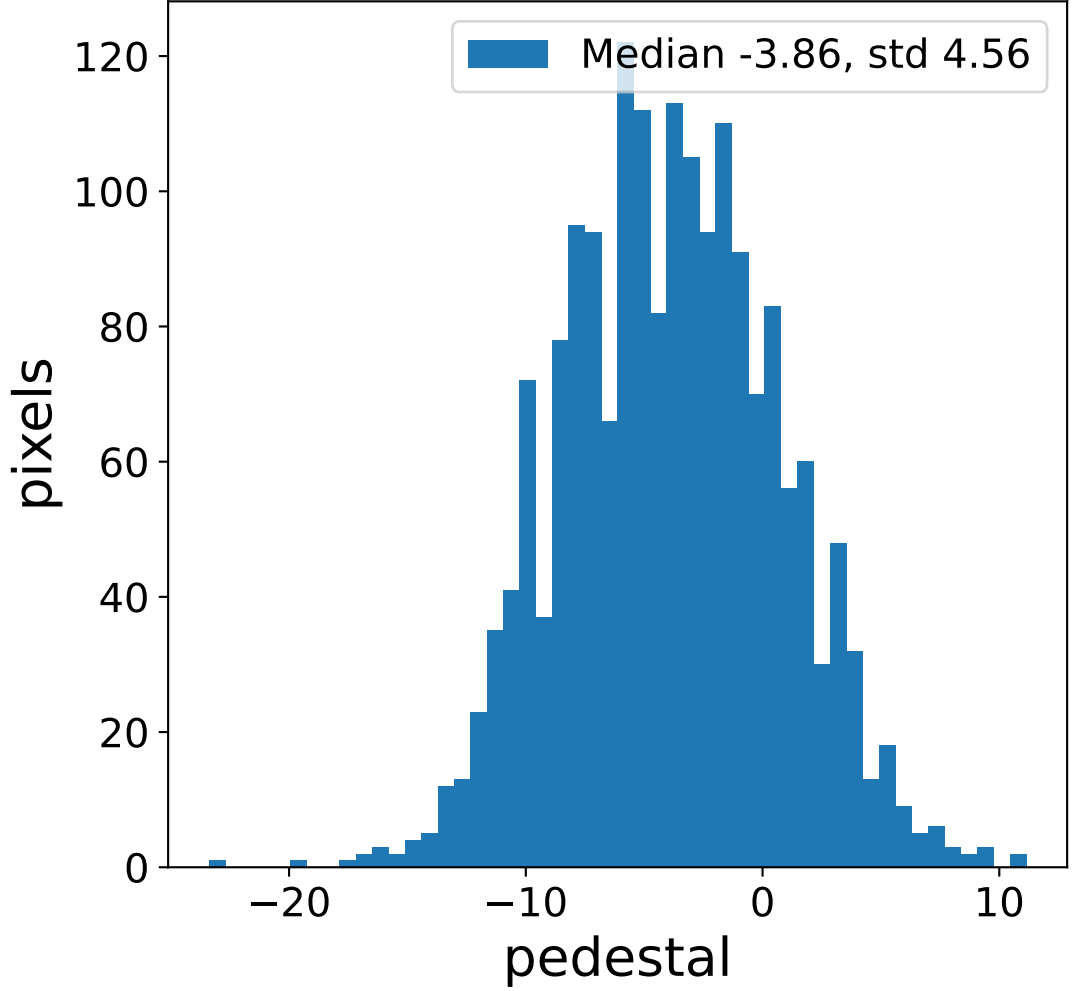


Run 9496 channel: LG

FF sample of 10000 events



pedestal sample of 10000 events



flat-fielded gain [ADC/pe]

