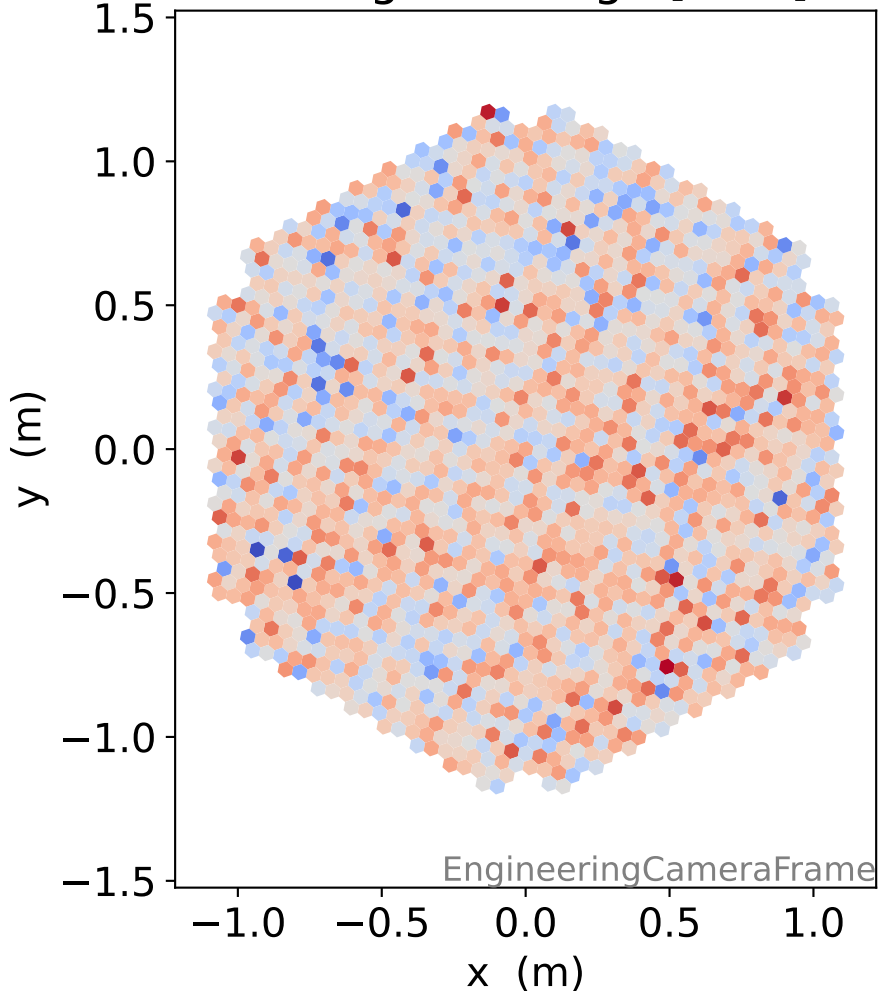
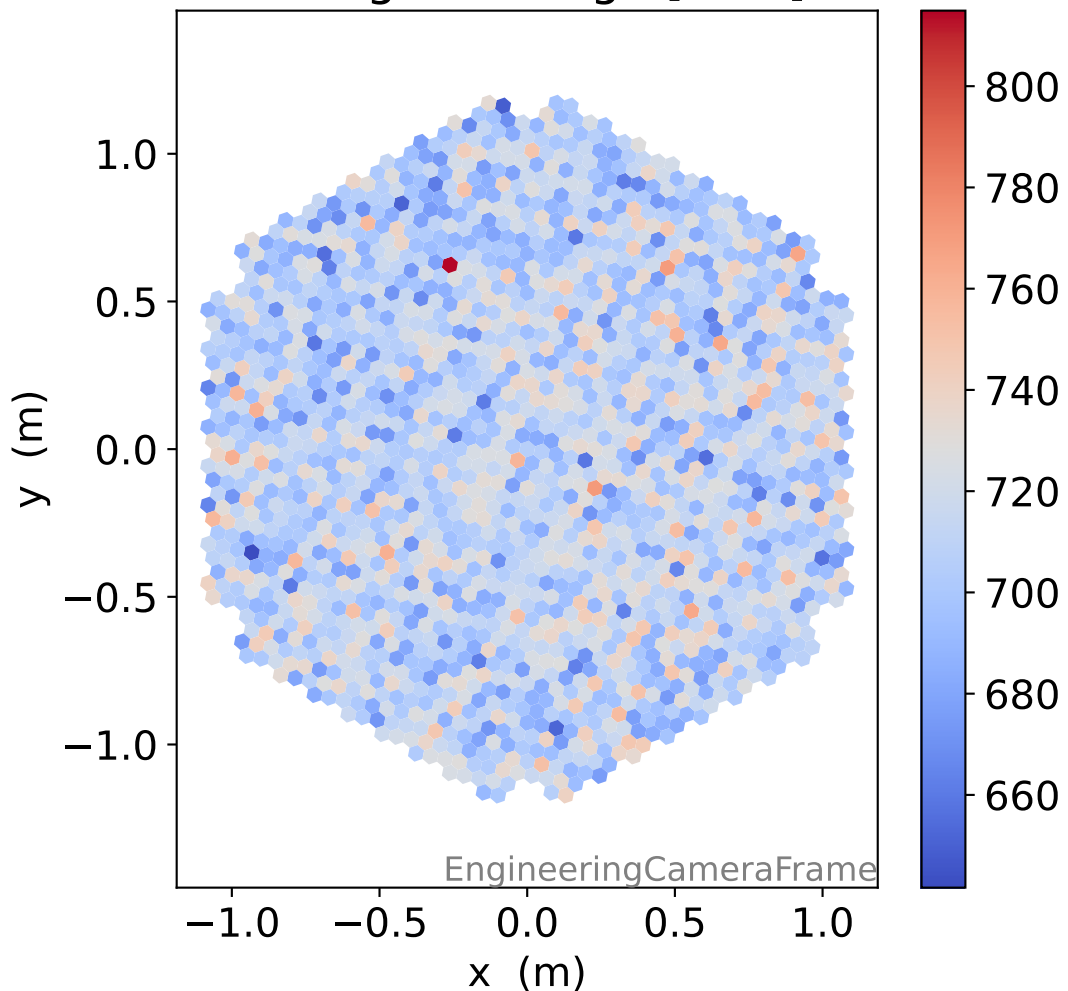


# Run 9497

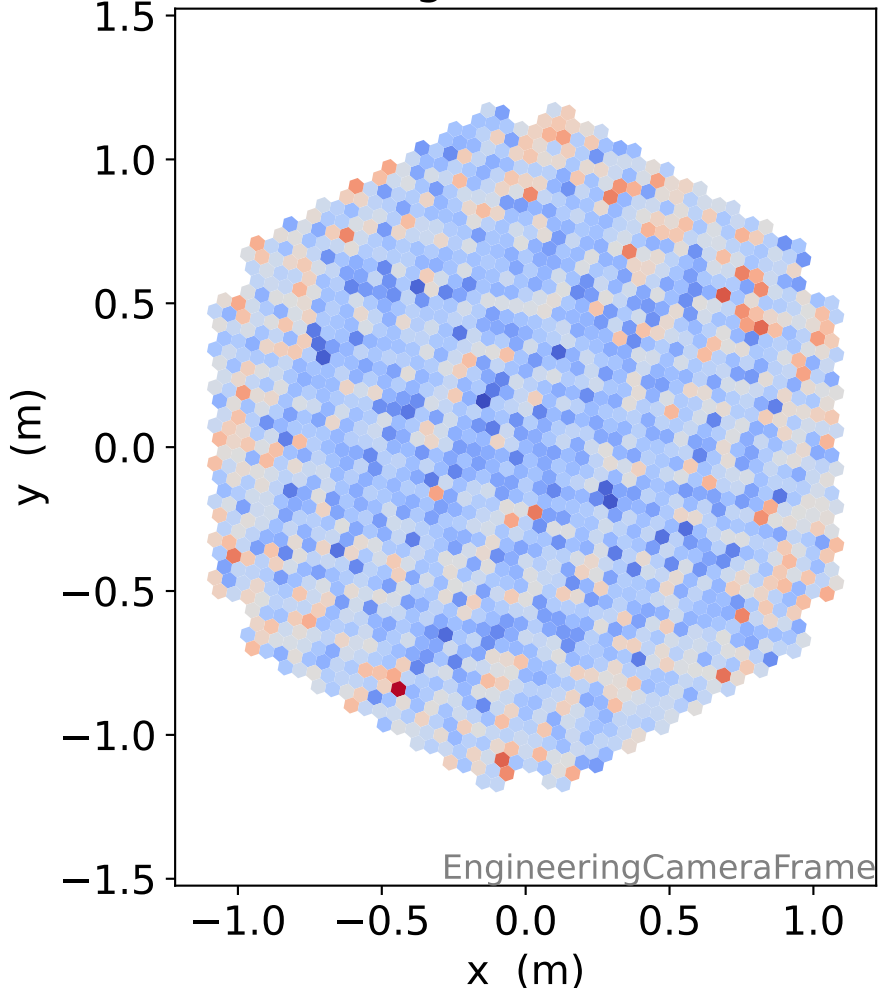
### HG signal charge [ADC]



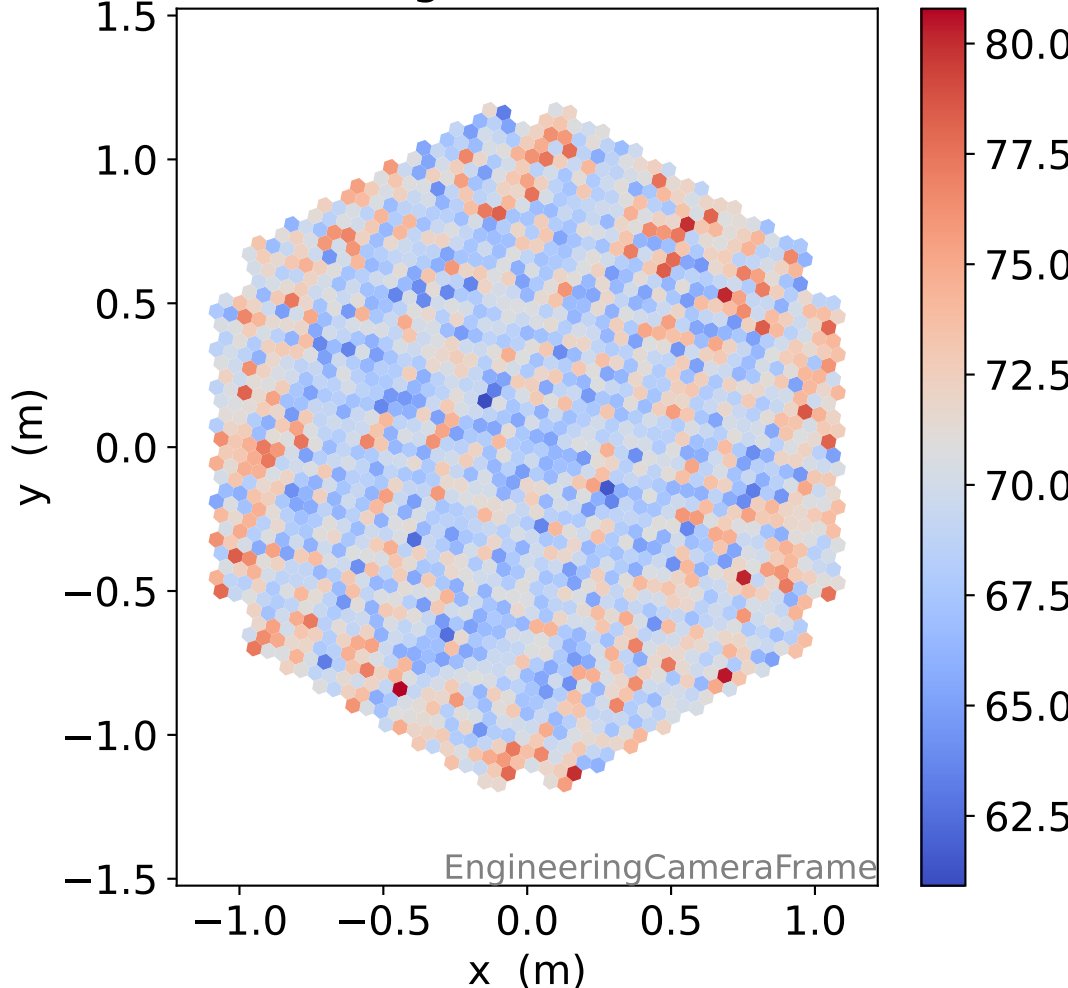
### LG signal charge [ADC]



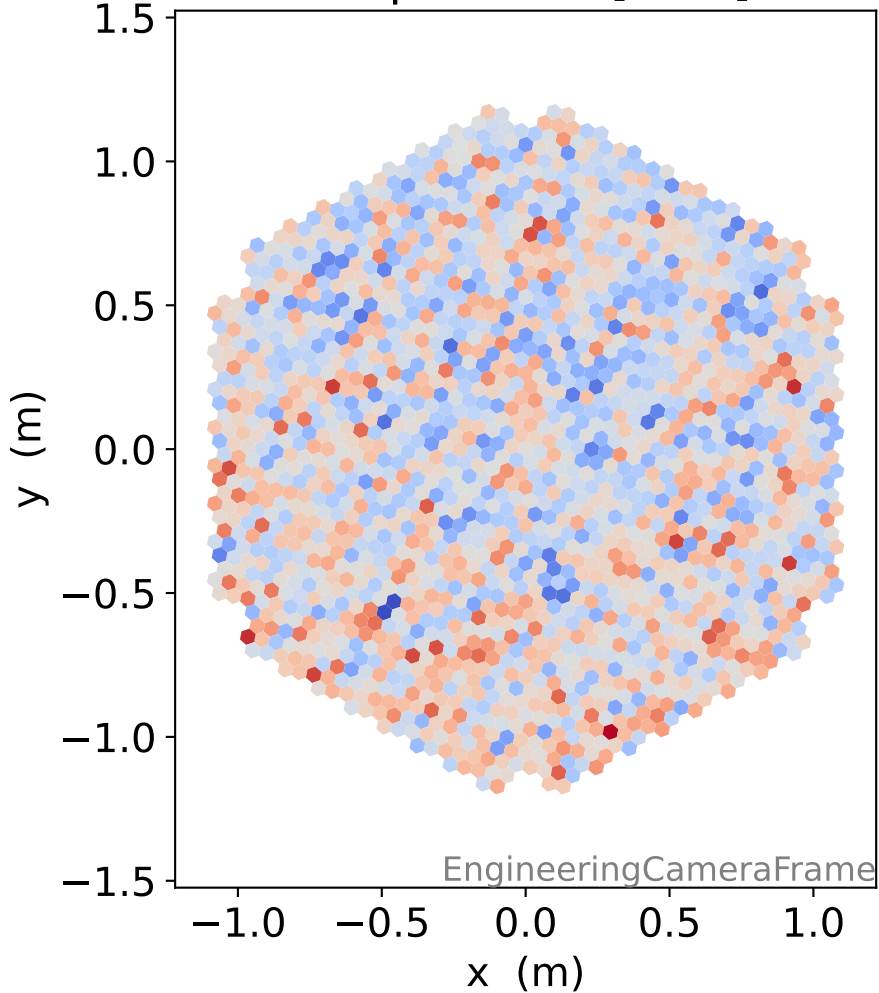
### HG signal std [ADC]



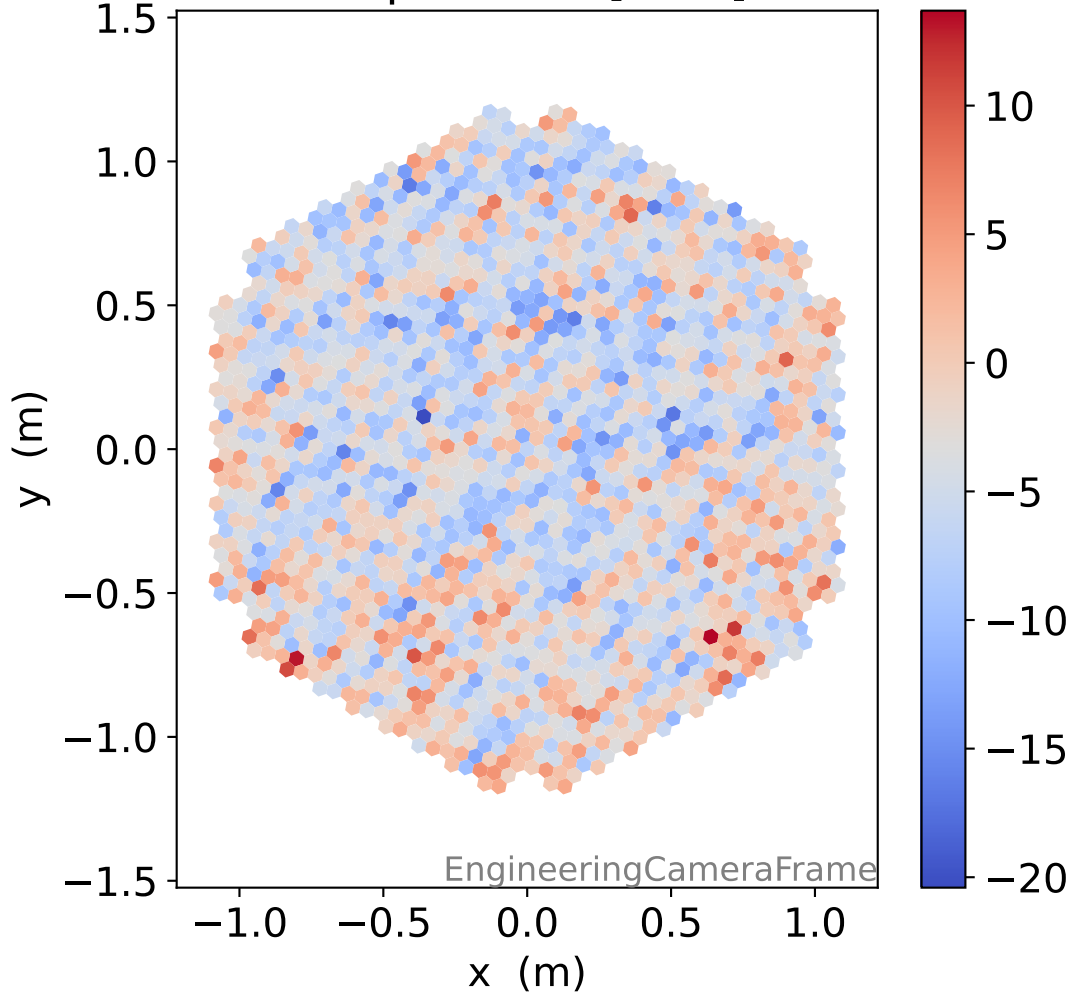
### LG signal std [ADC]



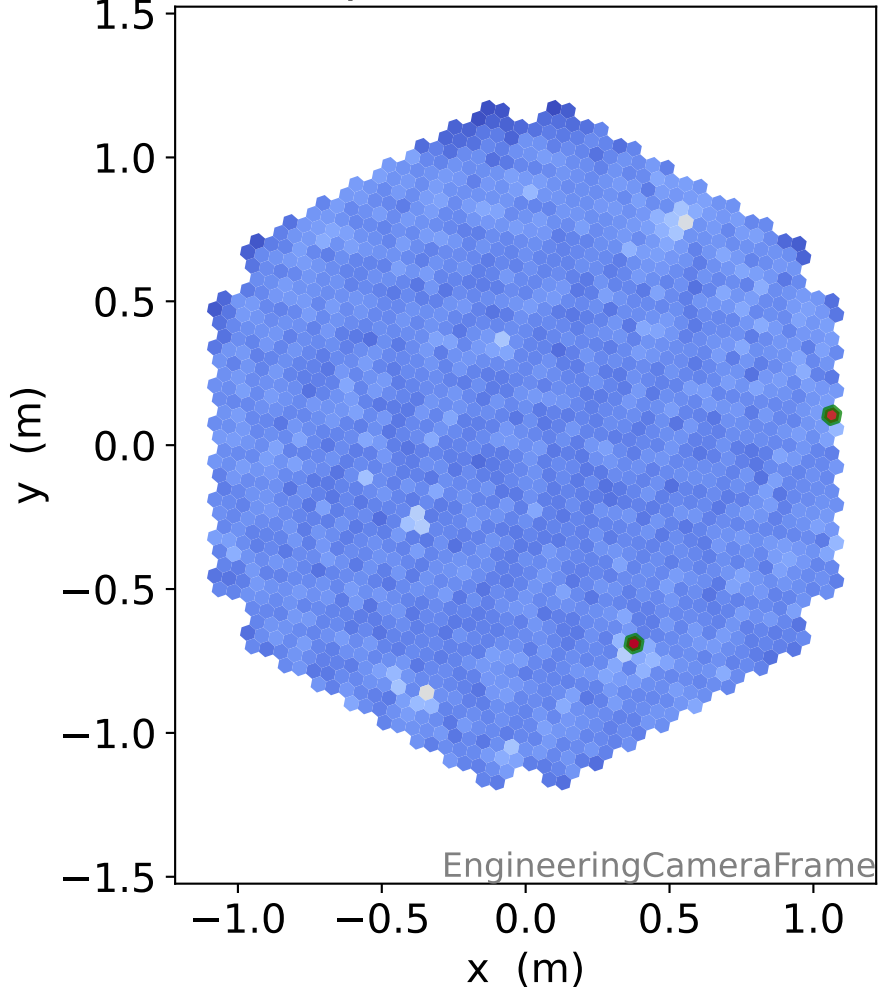
### HG pedestal [ADC]



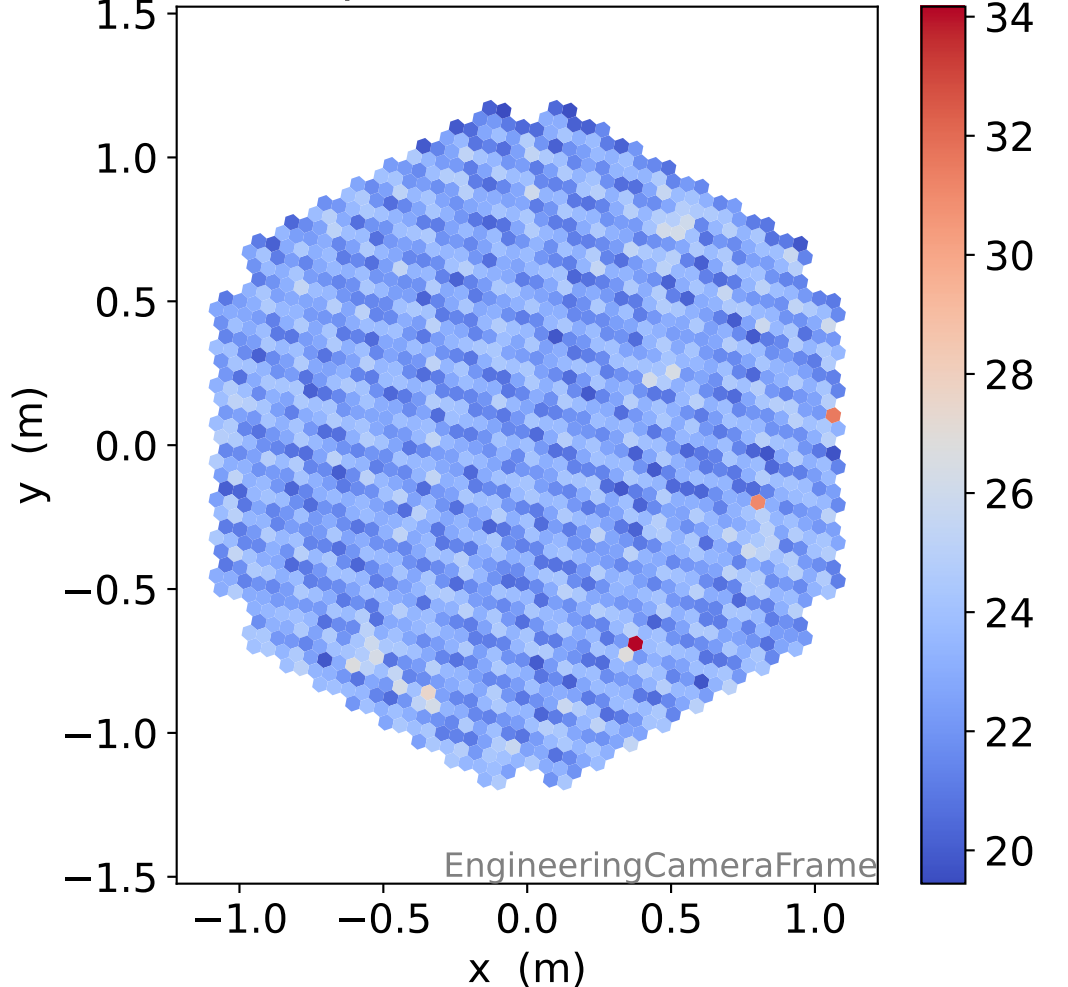
### LG pedestal [ADC]



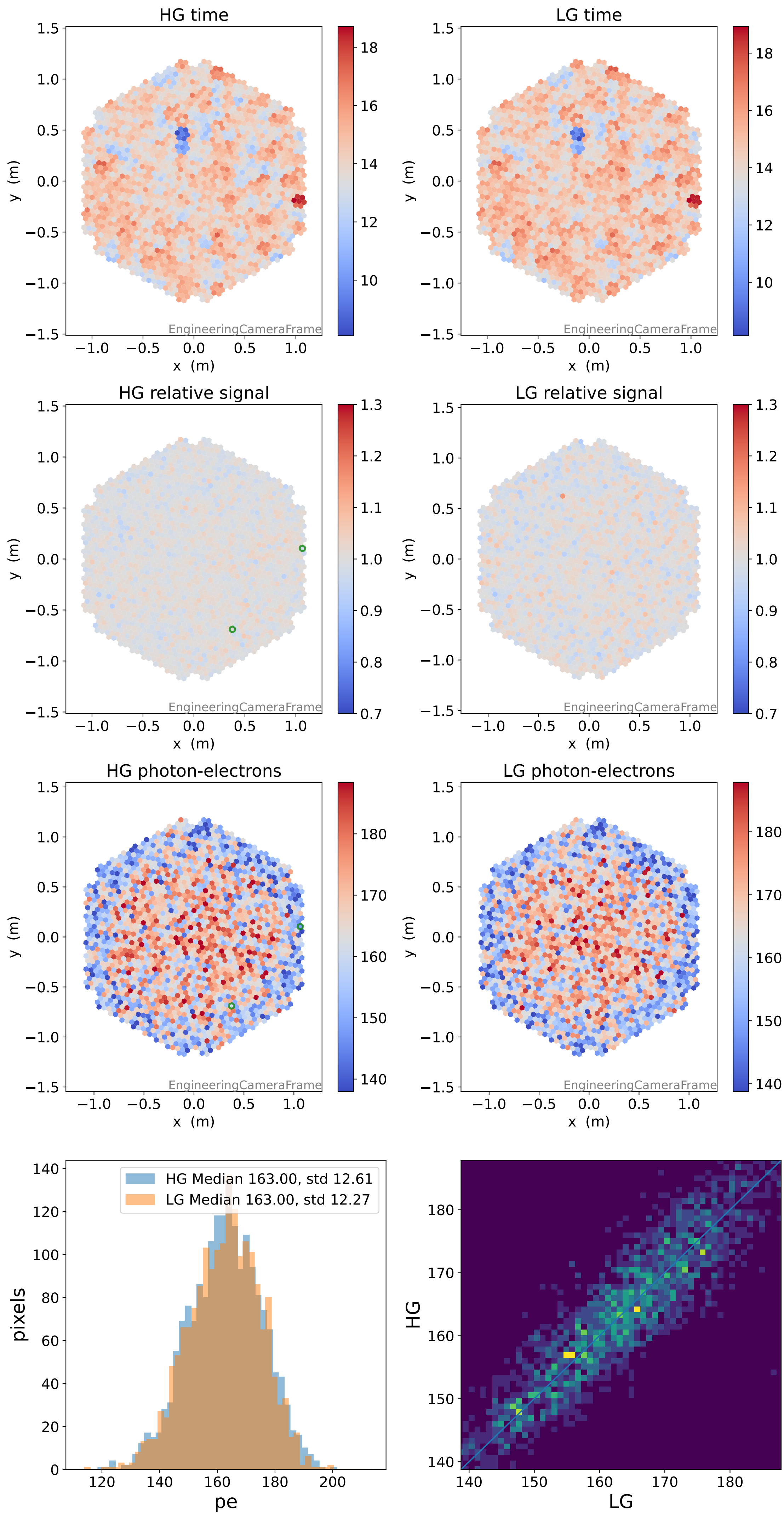
### HG pedestal std [ADC]



### LG pedestal std [ADC]

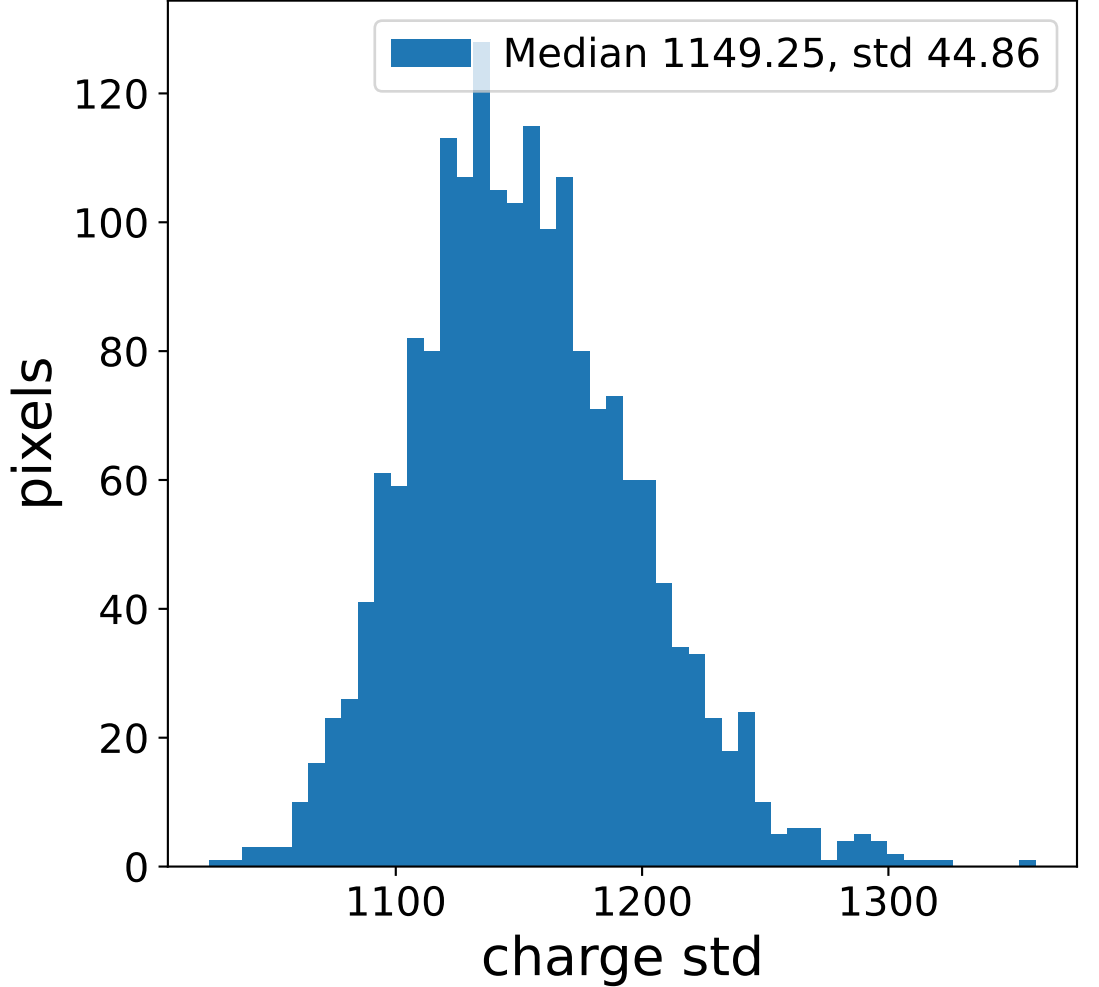
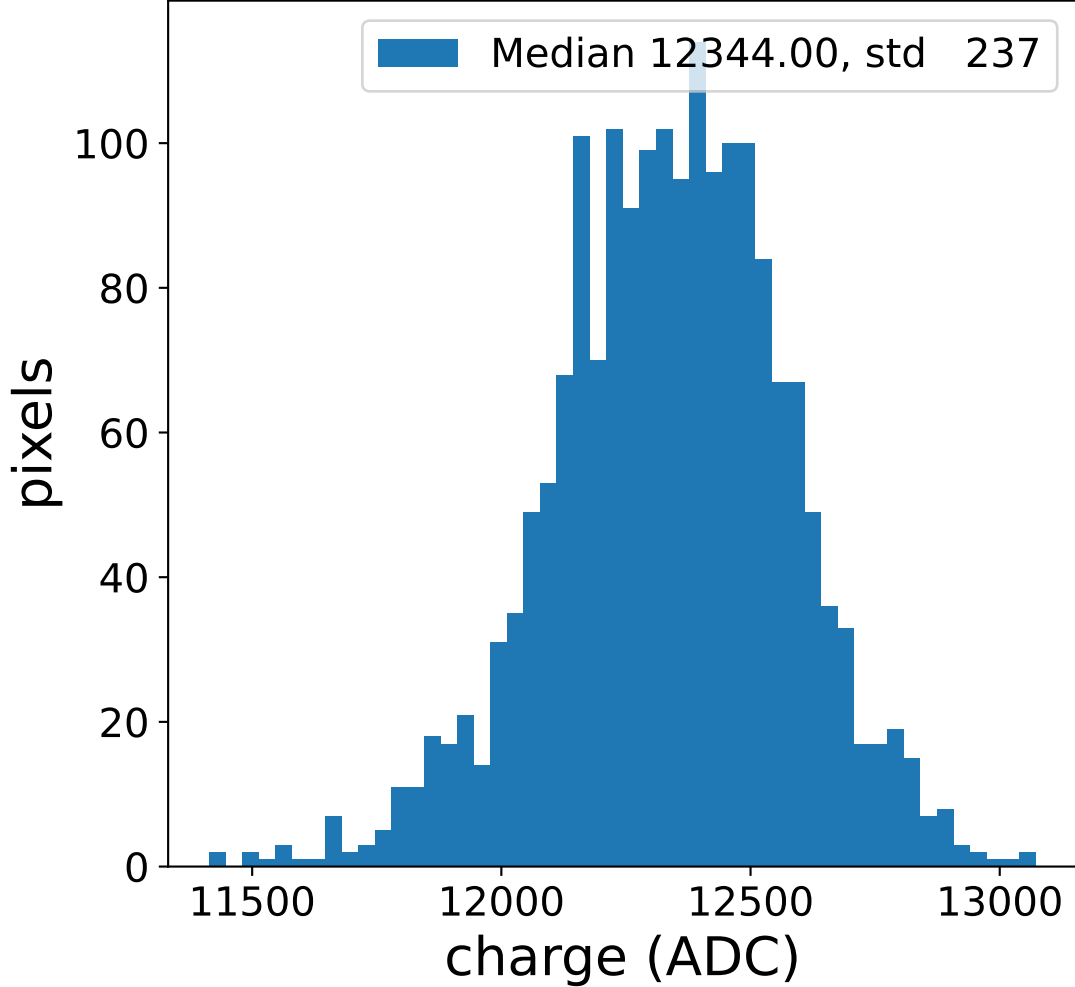


# Run 9497

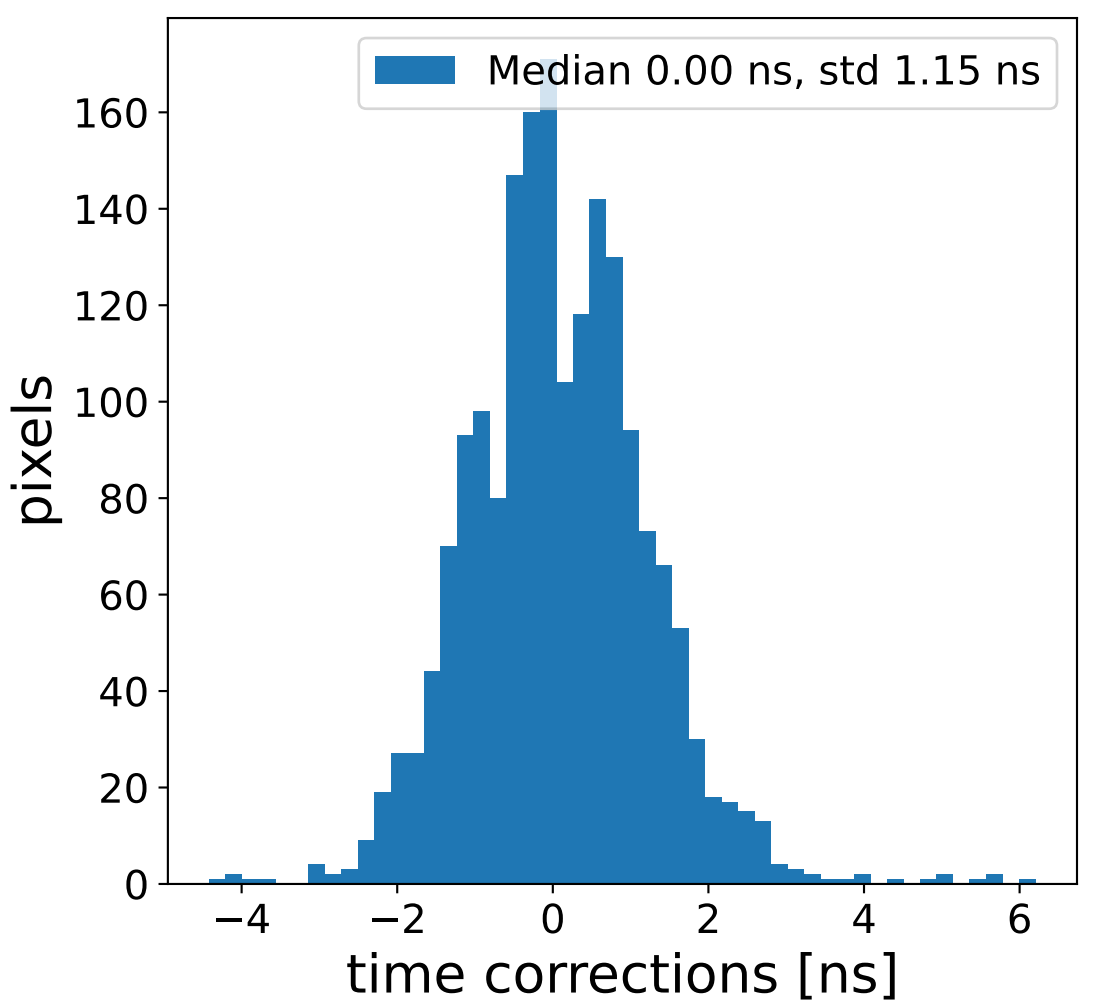
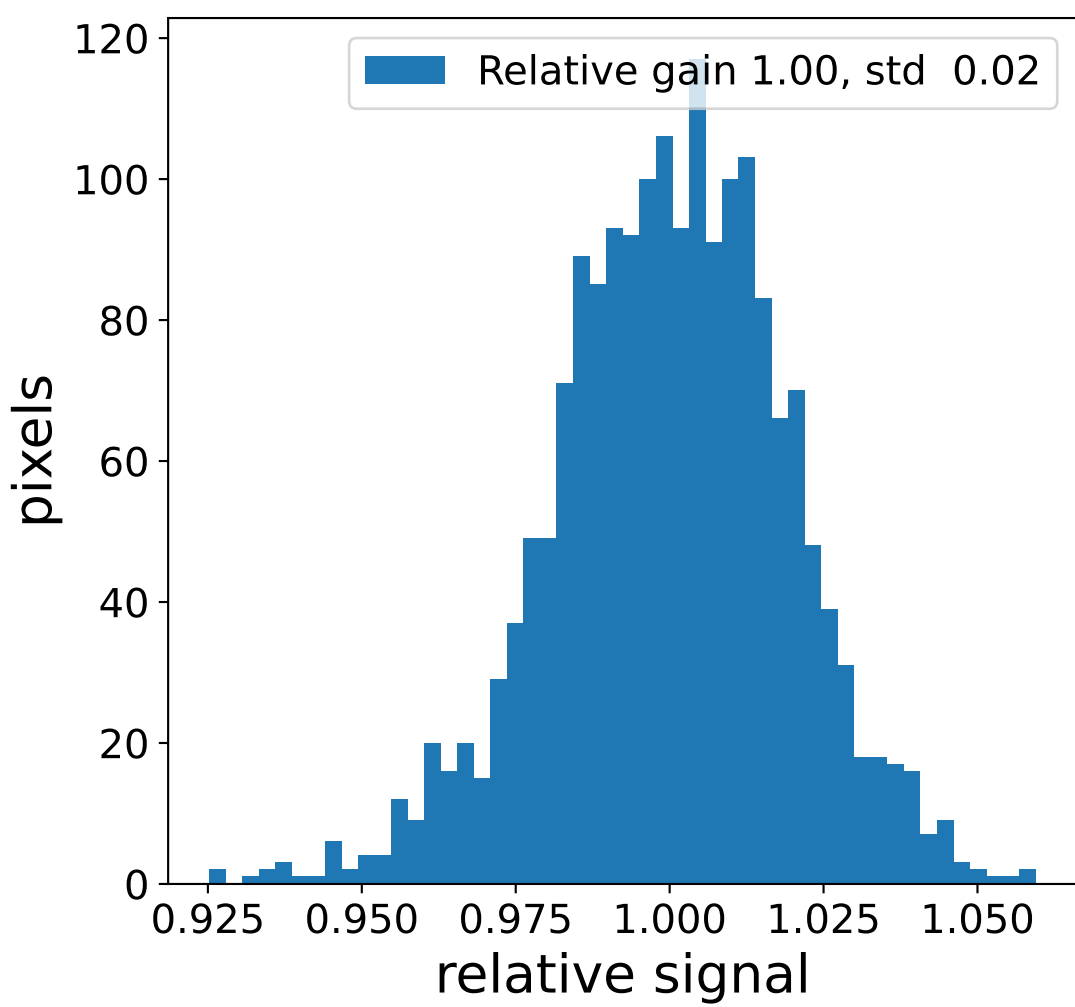
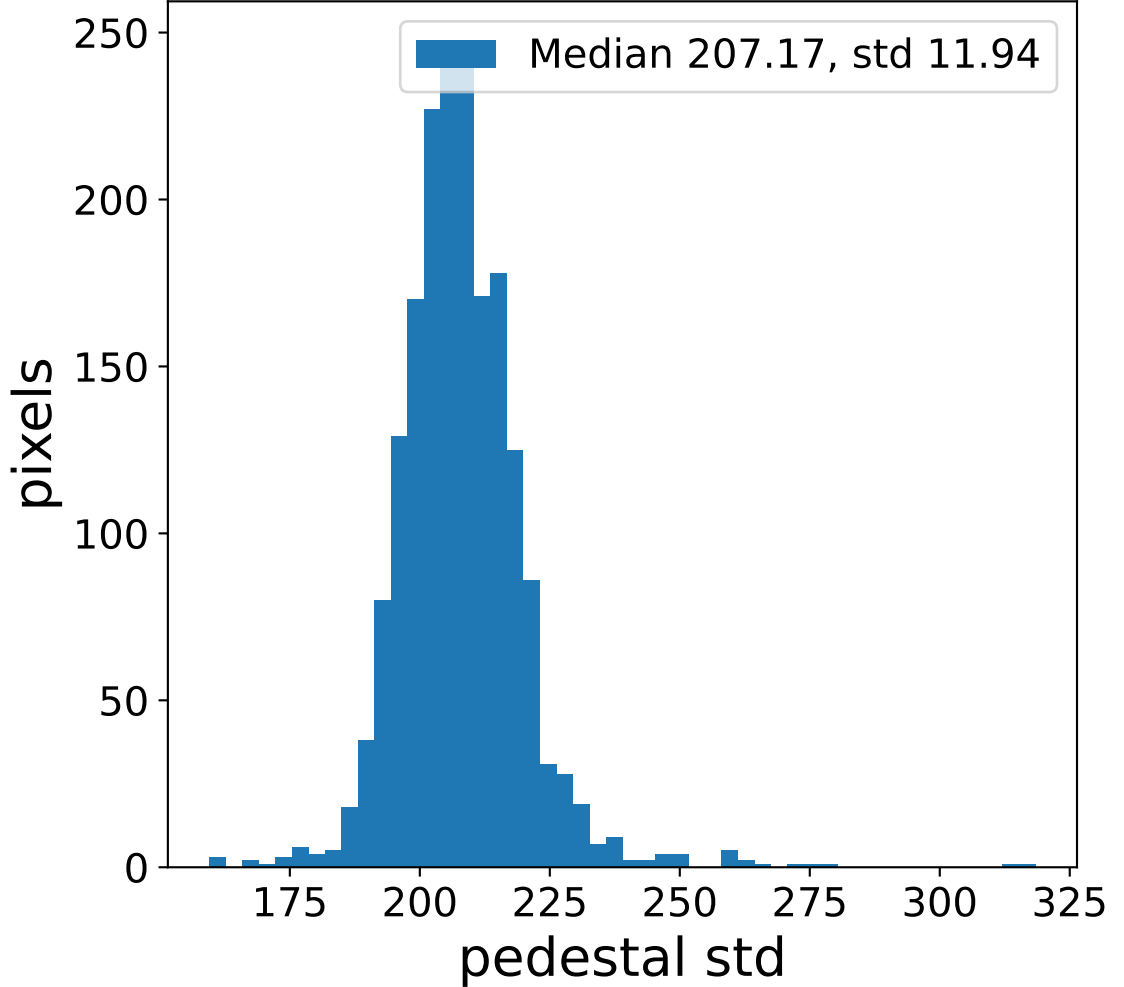
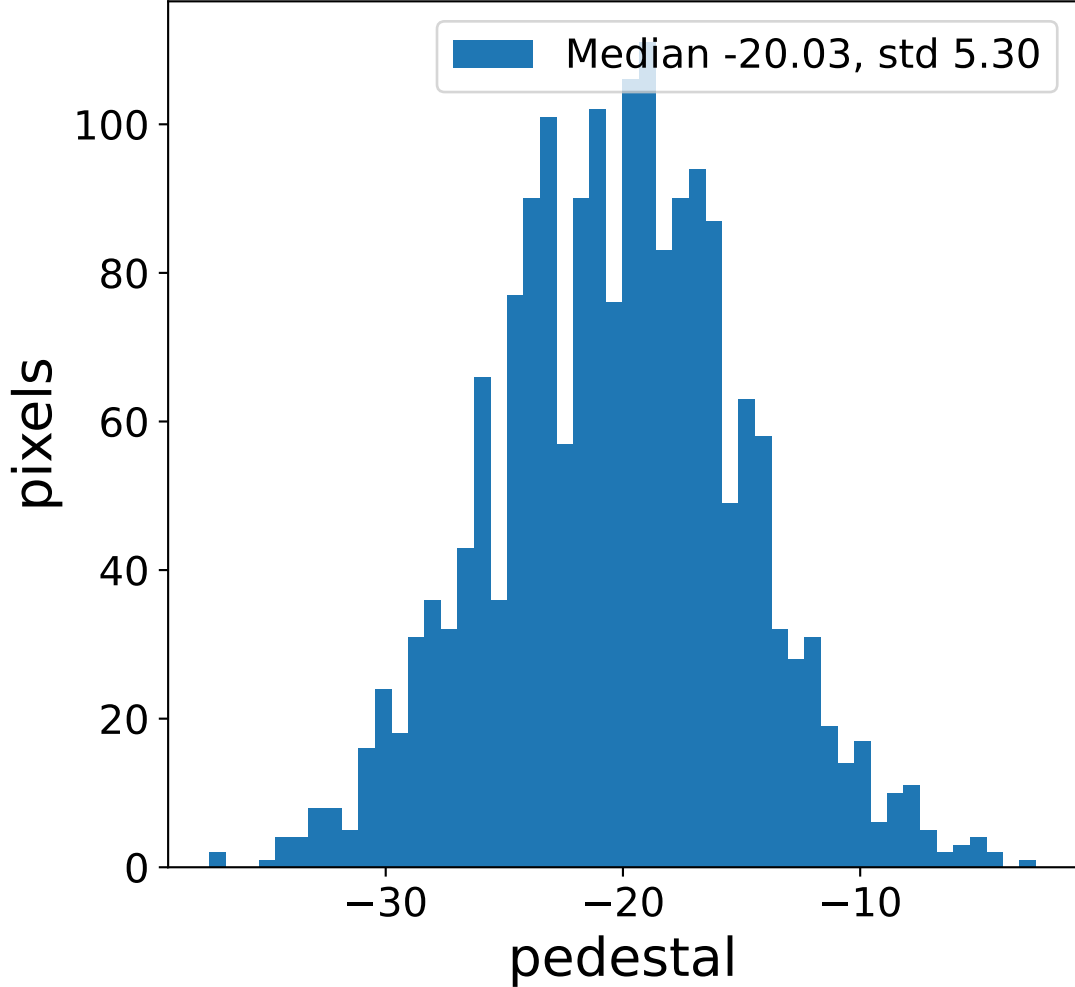


# Run 9497 channel: HG

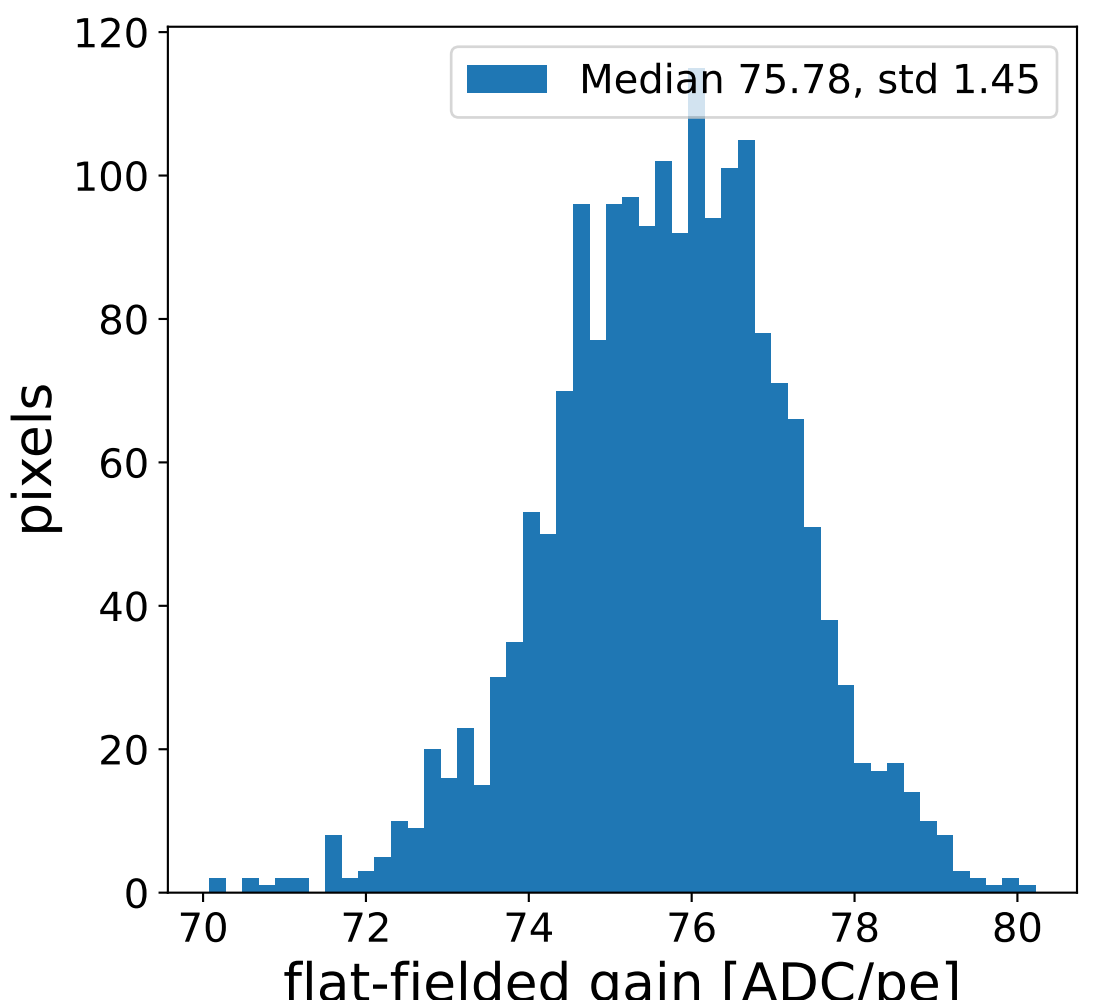
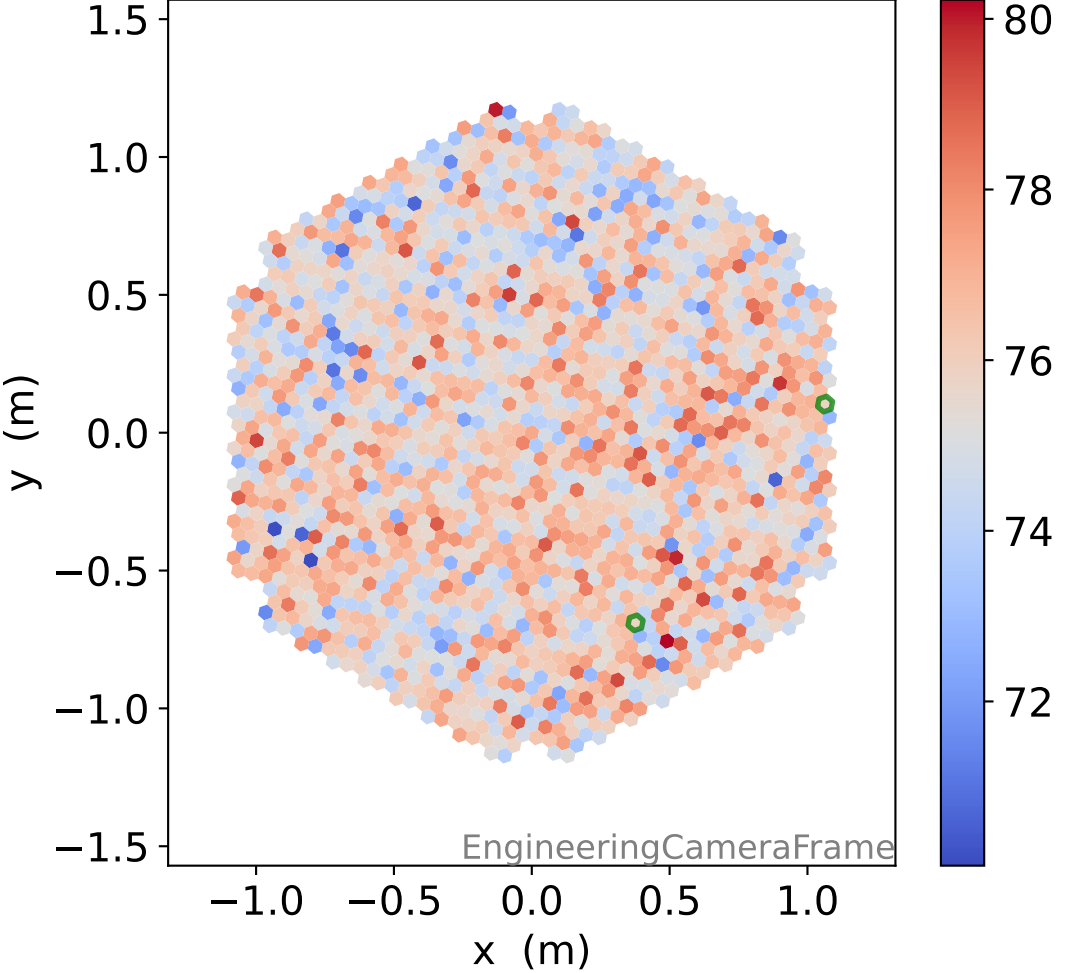
### FF sample of 10000 events



### pedestal sample of 10000 events

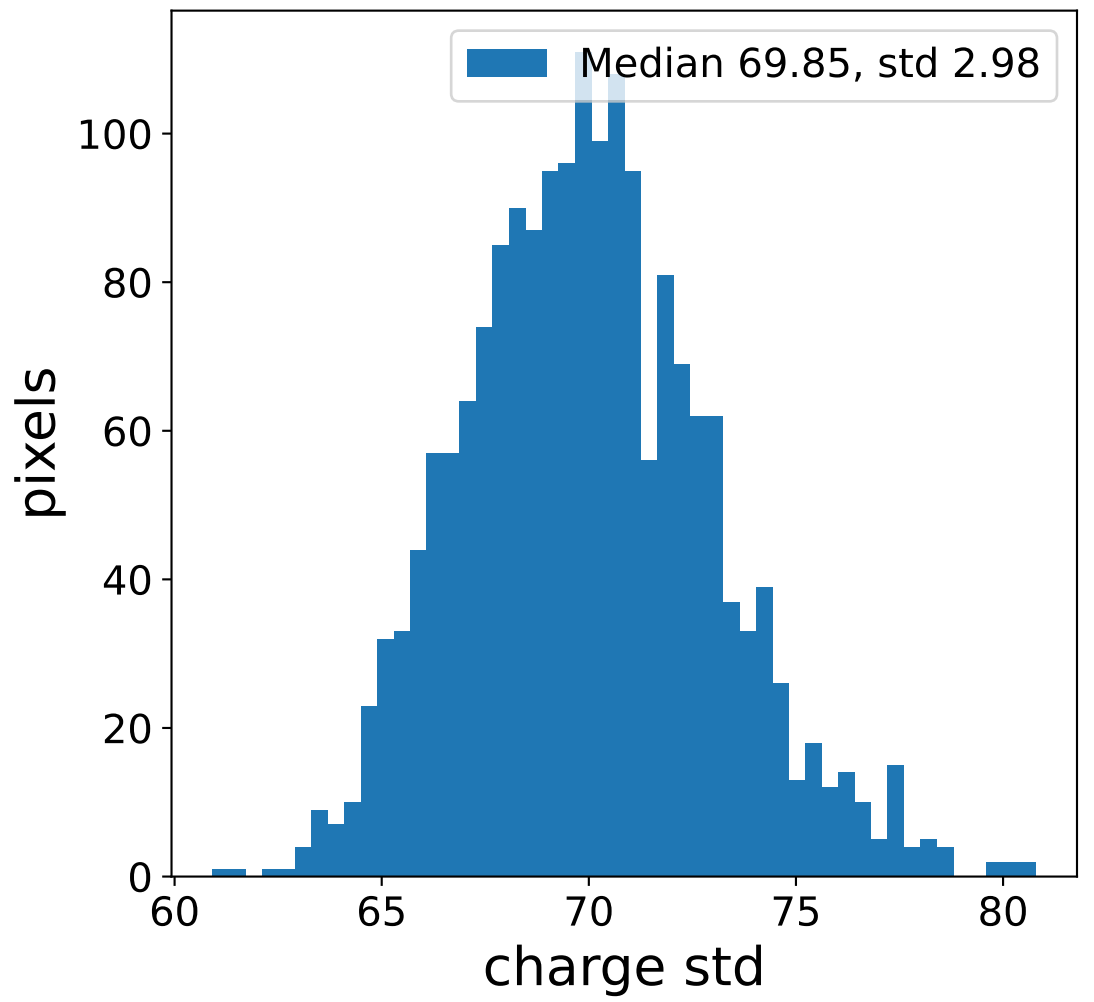
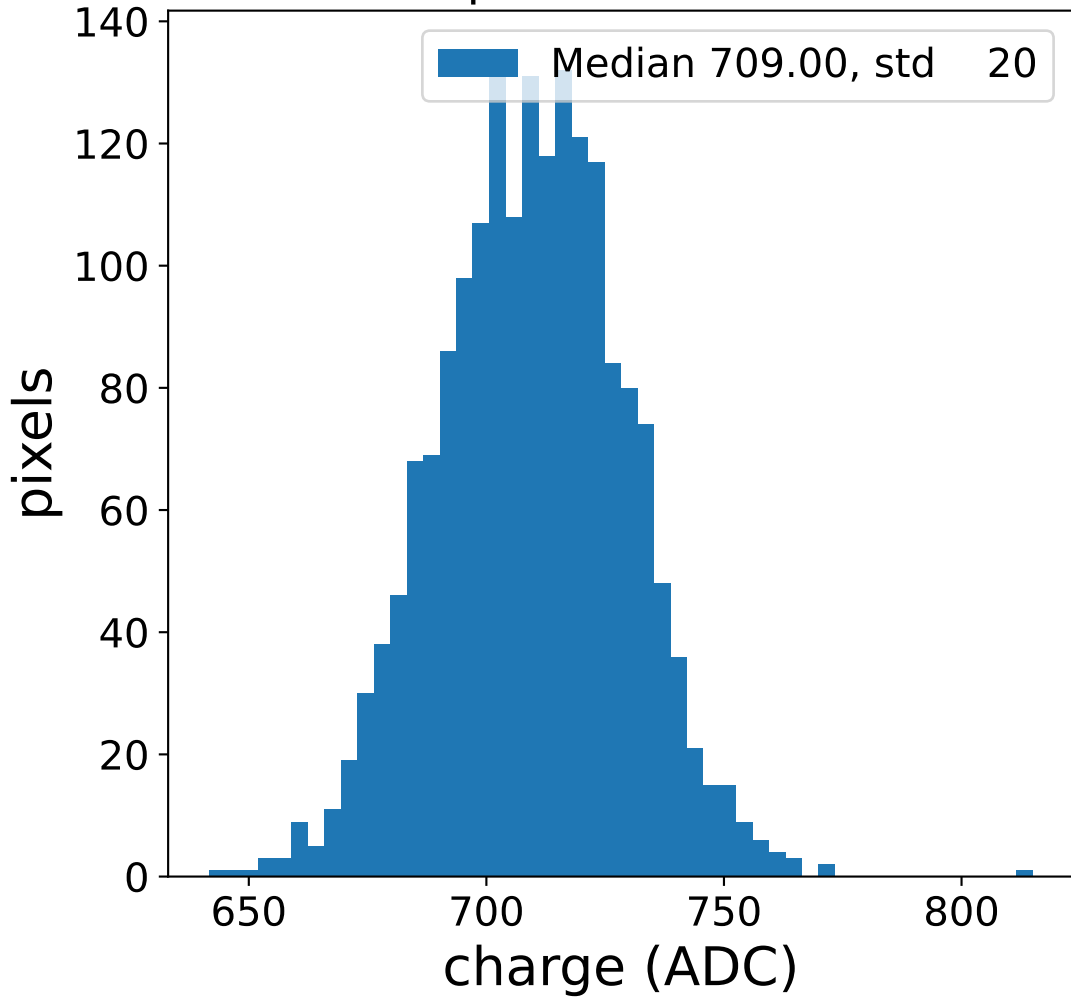


### flat-fielded gain [ADC/pe]



# Run 9497 channel: LG

## FF sample of 10000 events



## pedestal sample of 10000 events

