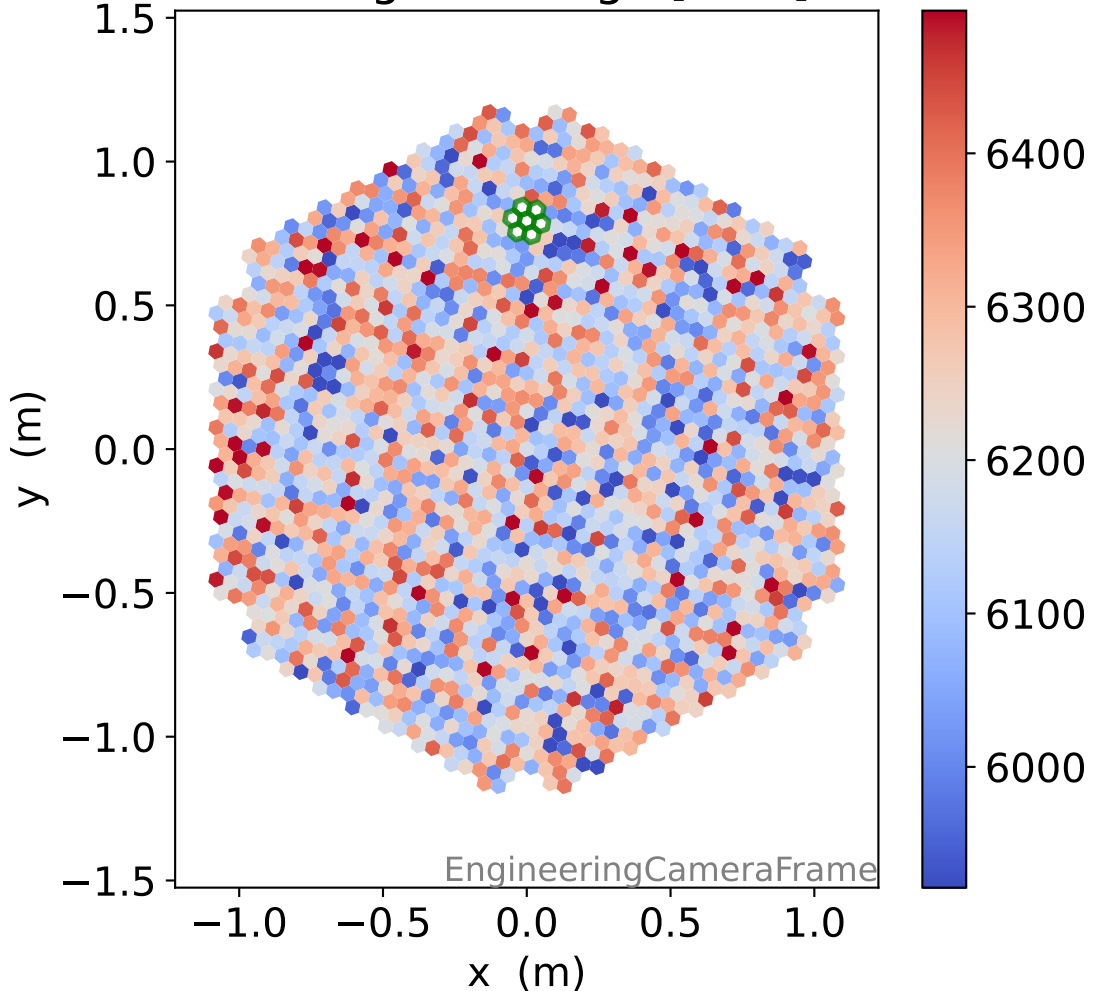
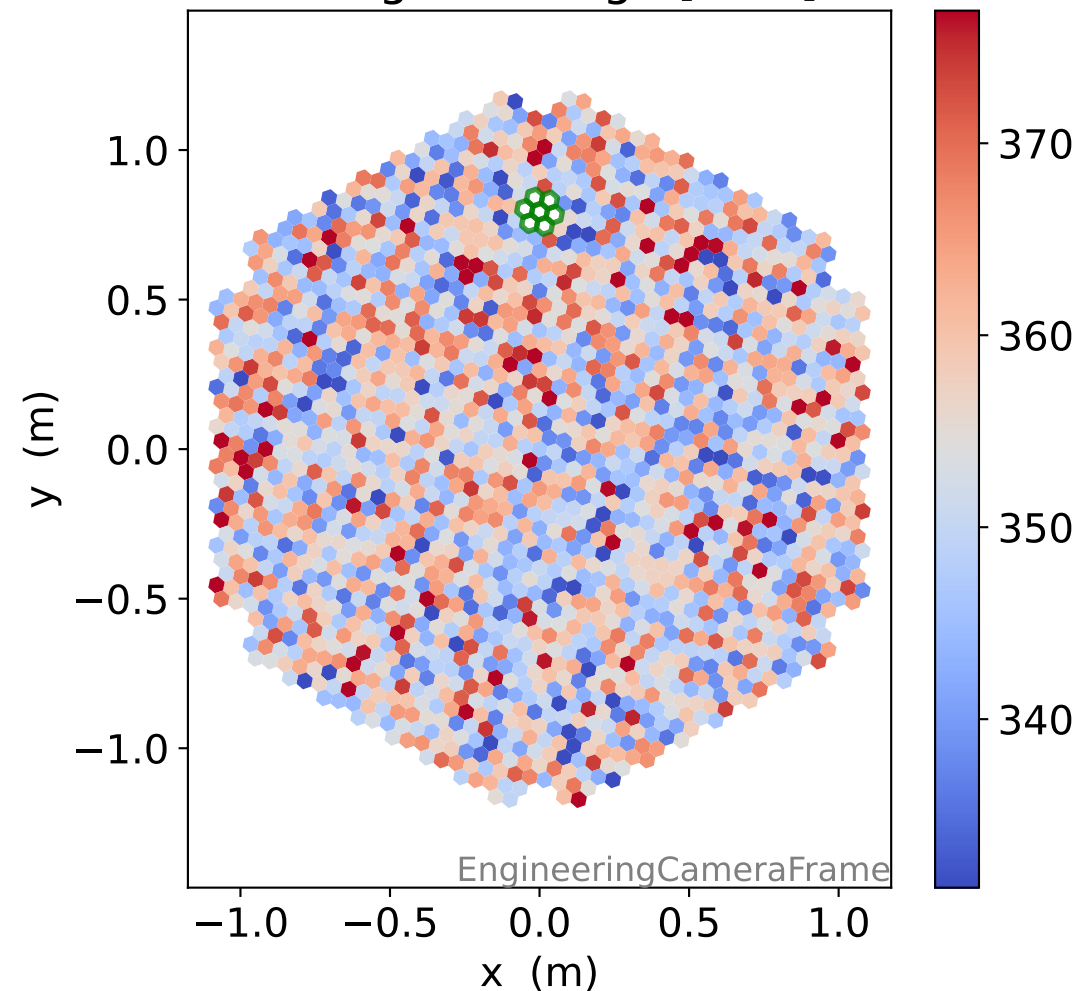


# Run 11401, Cat-A calibration

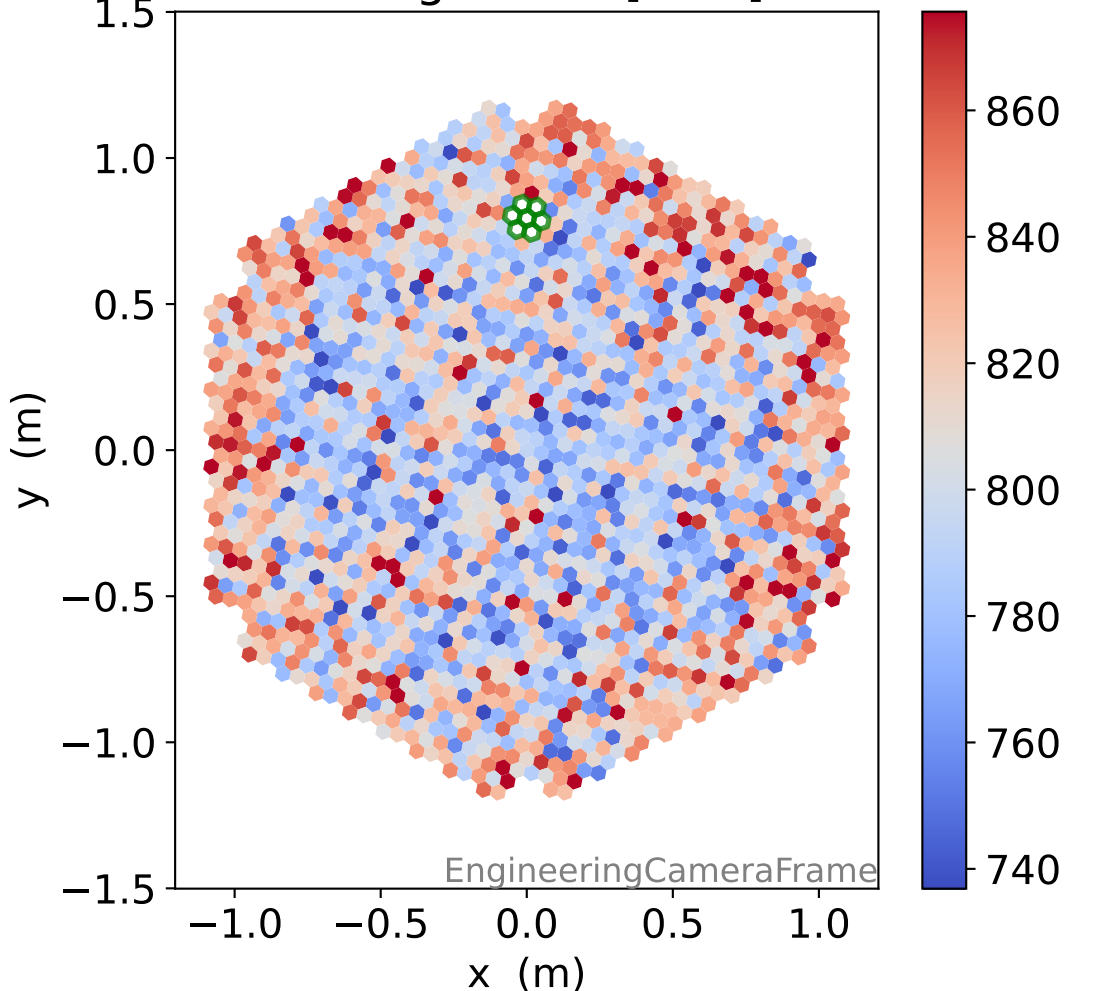
### HG signal charge [ADC]



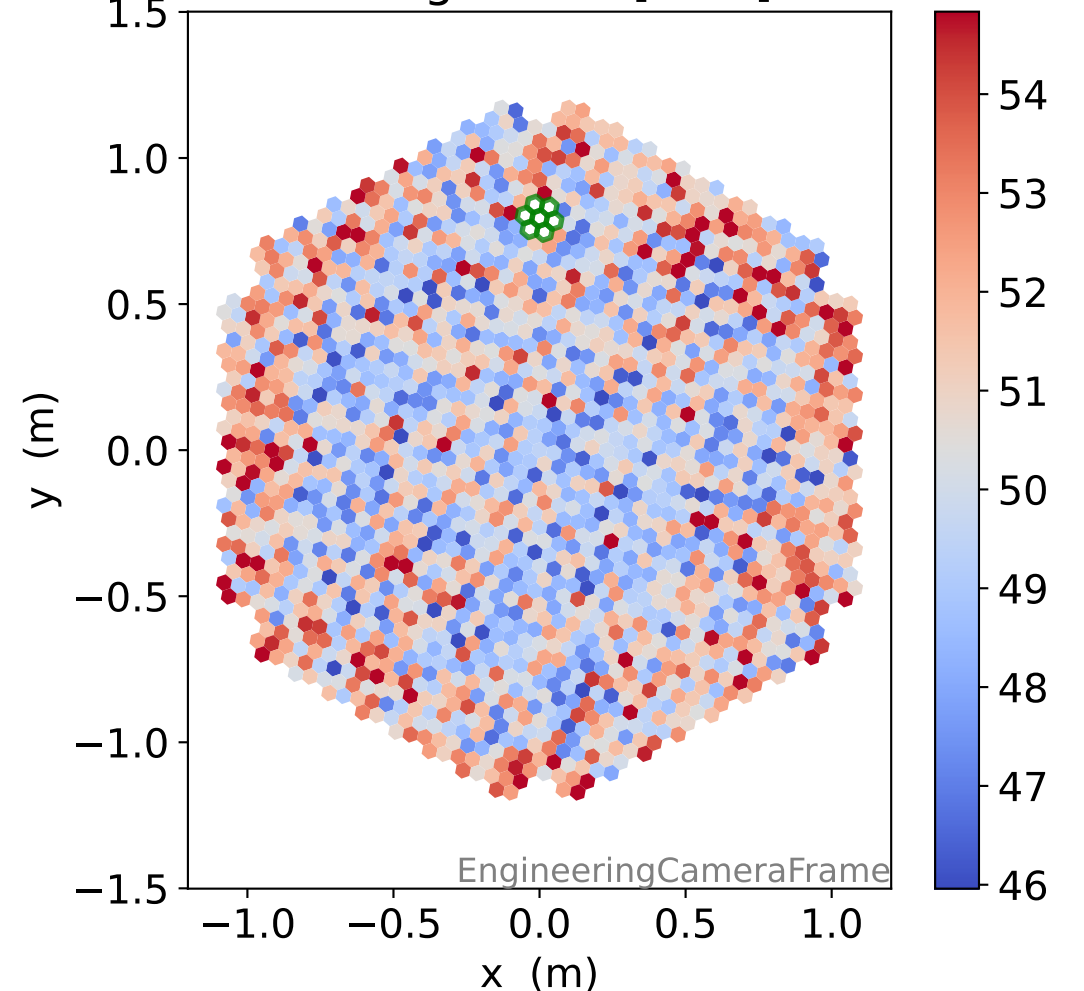
### LG signal charge [ADC]



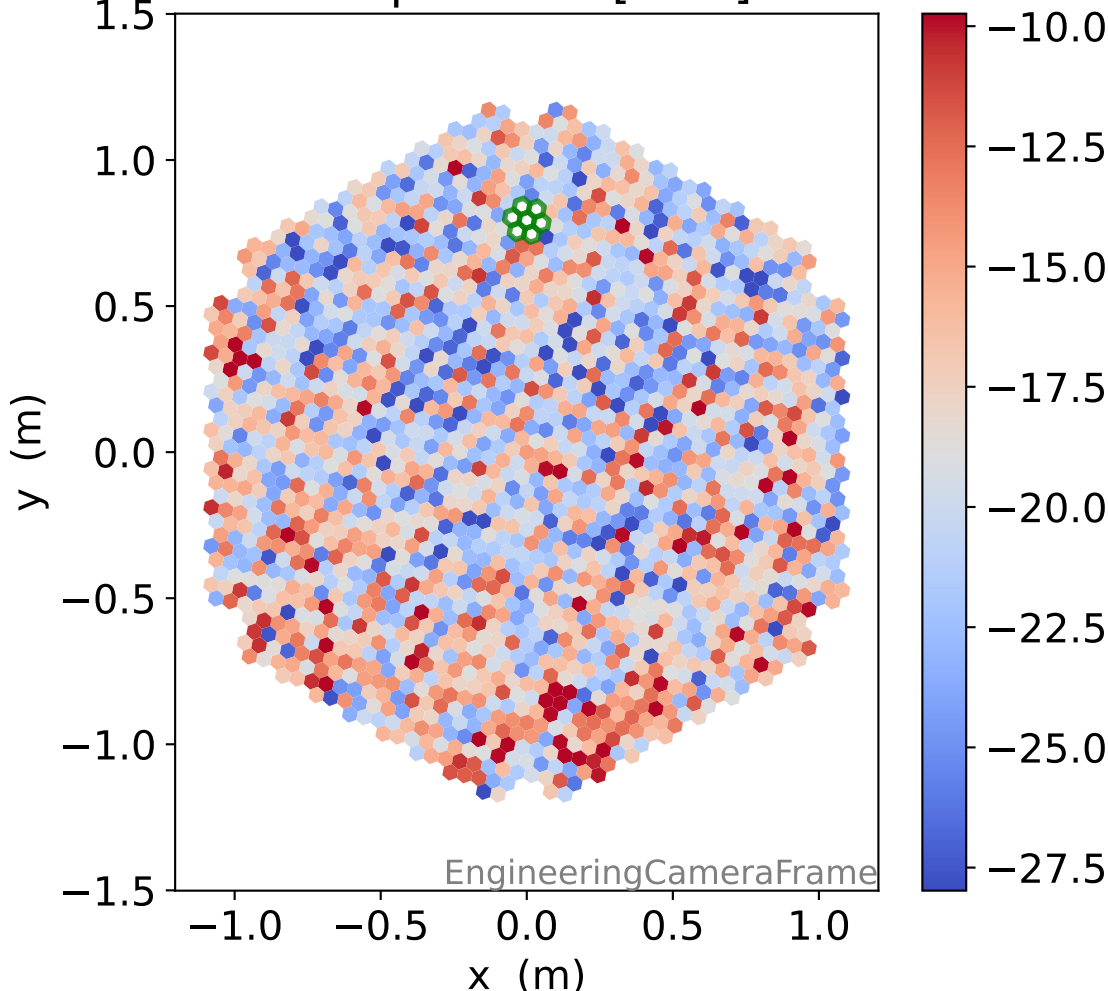
### HG signal std [ADC]



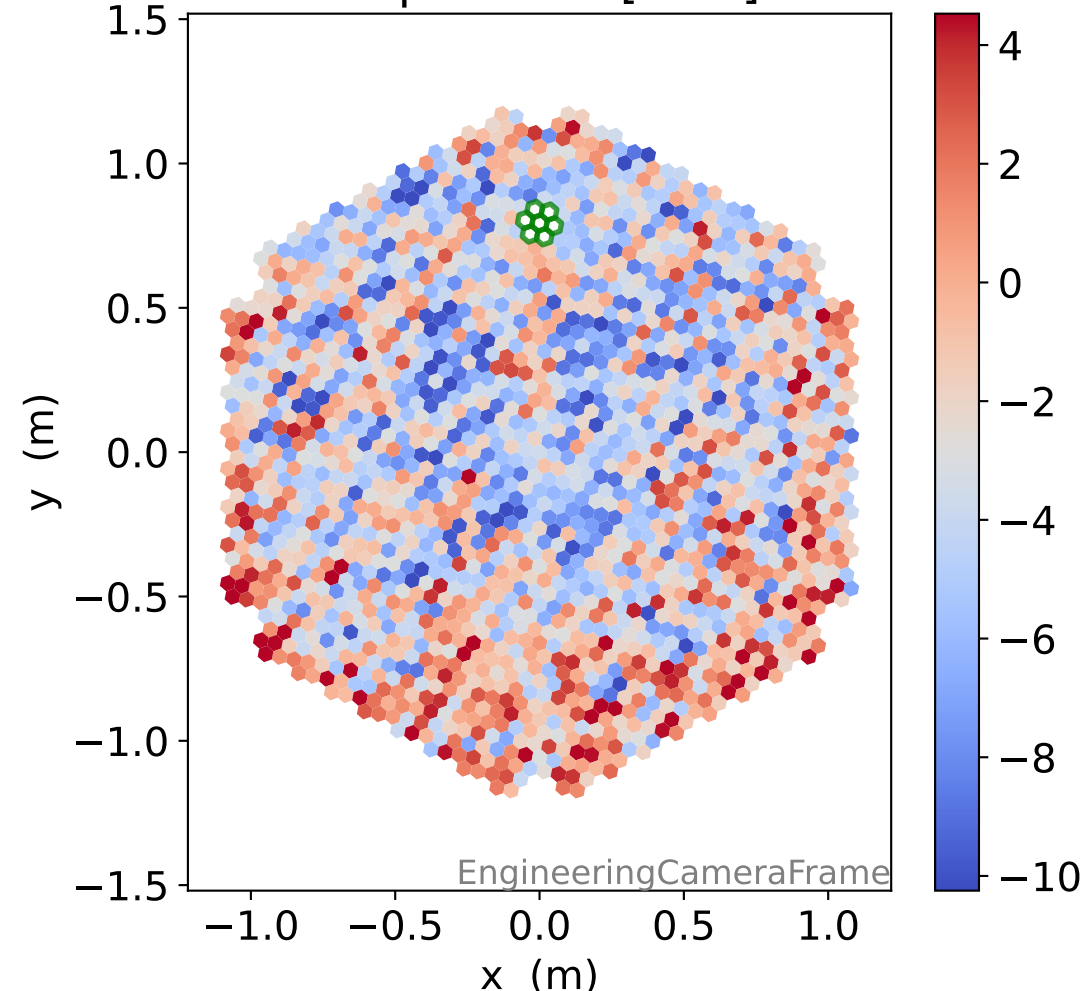
### LG signal std [ADC]



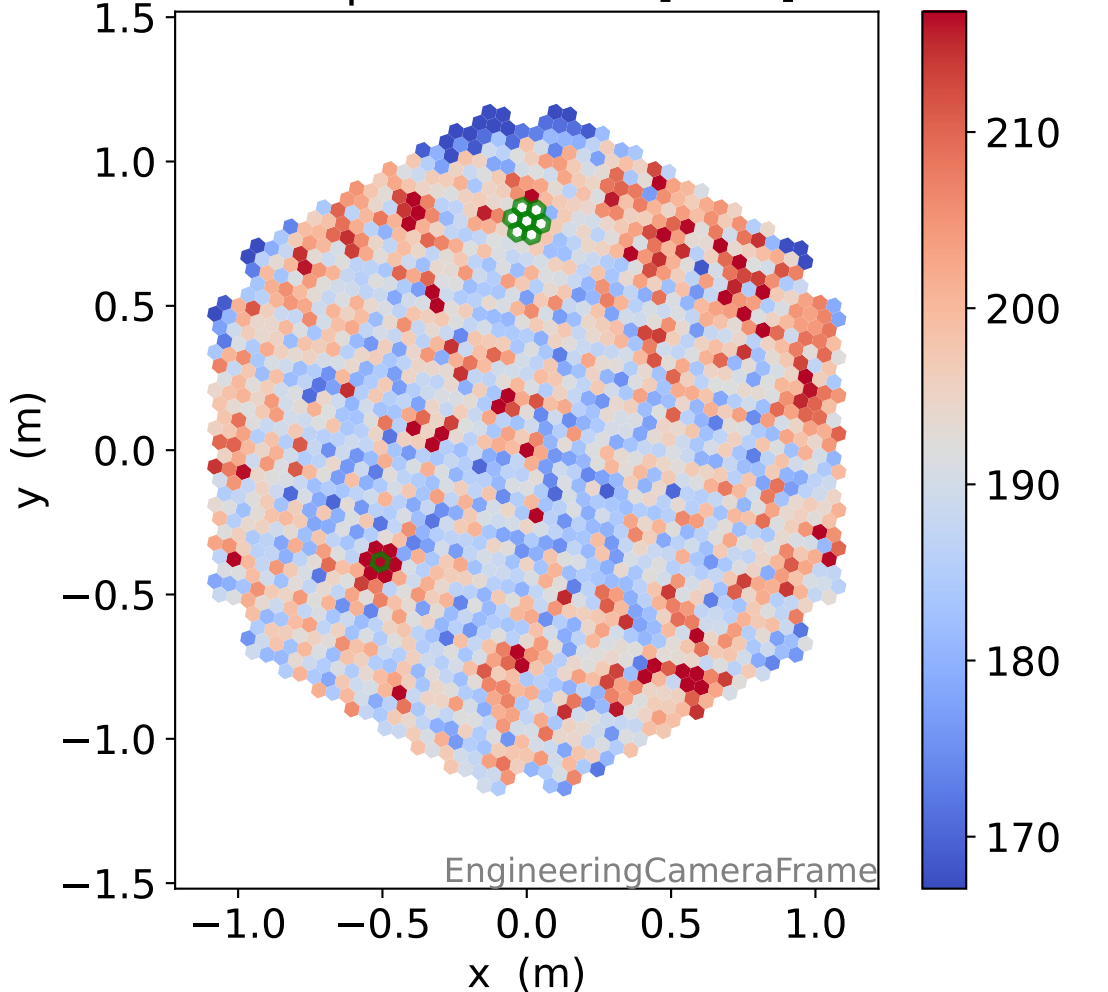
### HG pedestal [ADC]



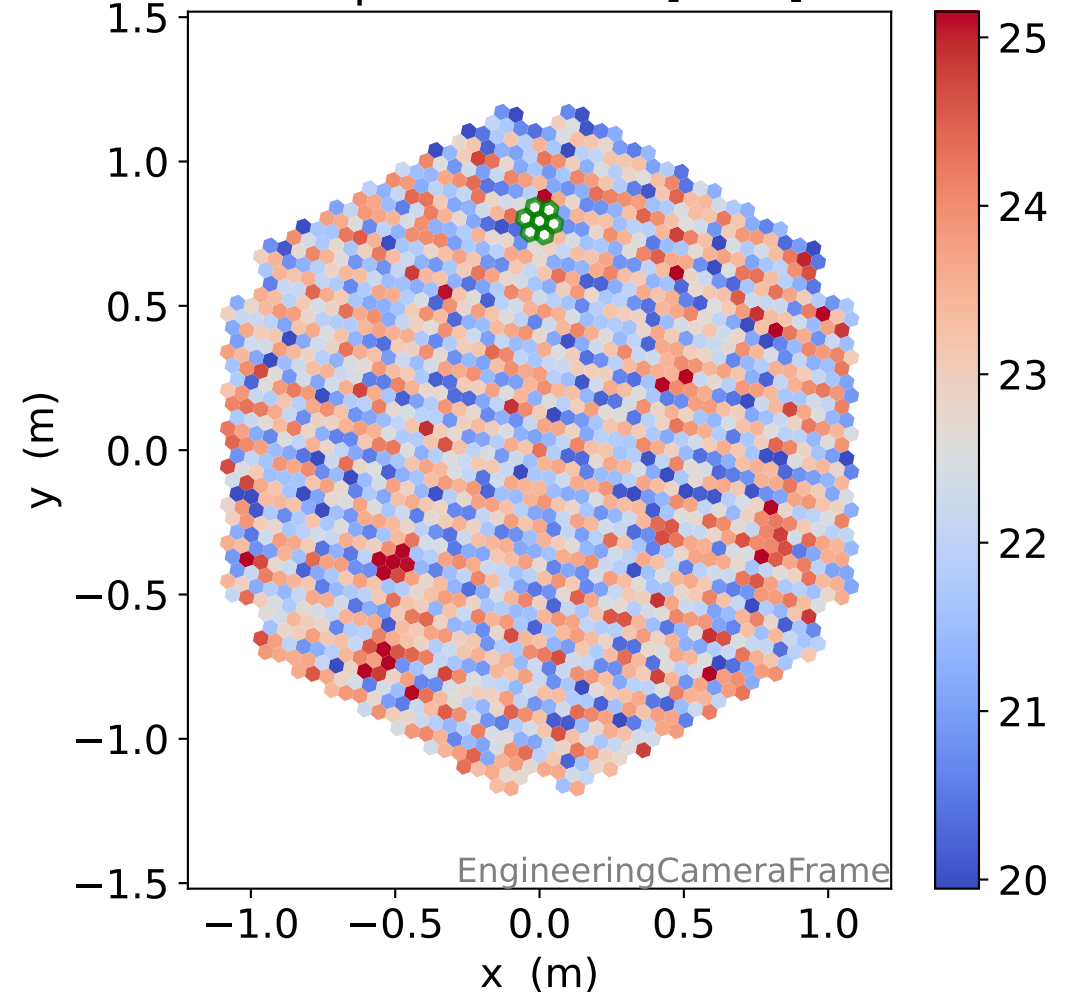
### LG pedestal [ADC]



### HG pedestal std [ADC]

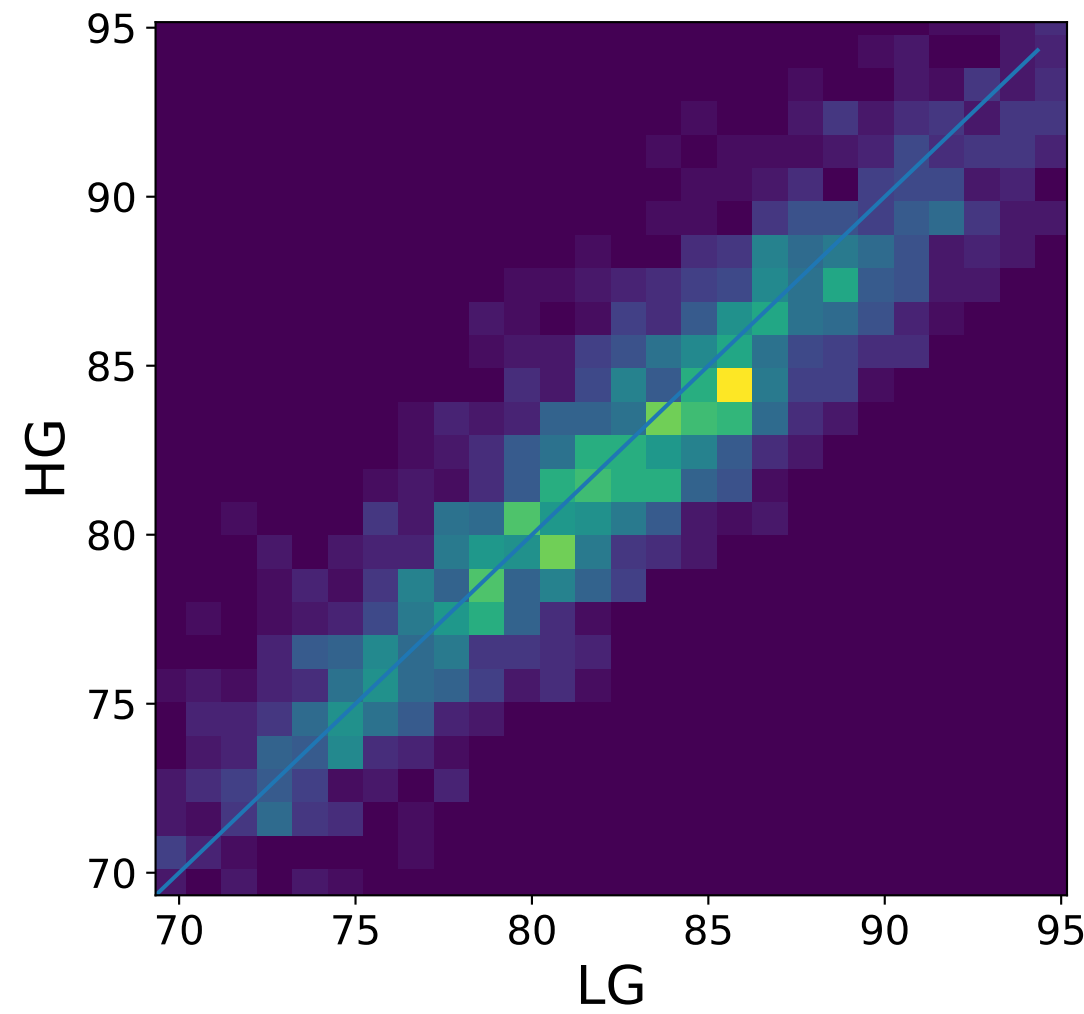
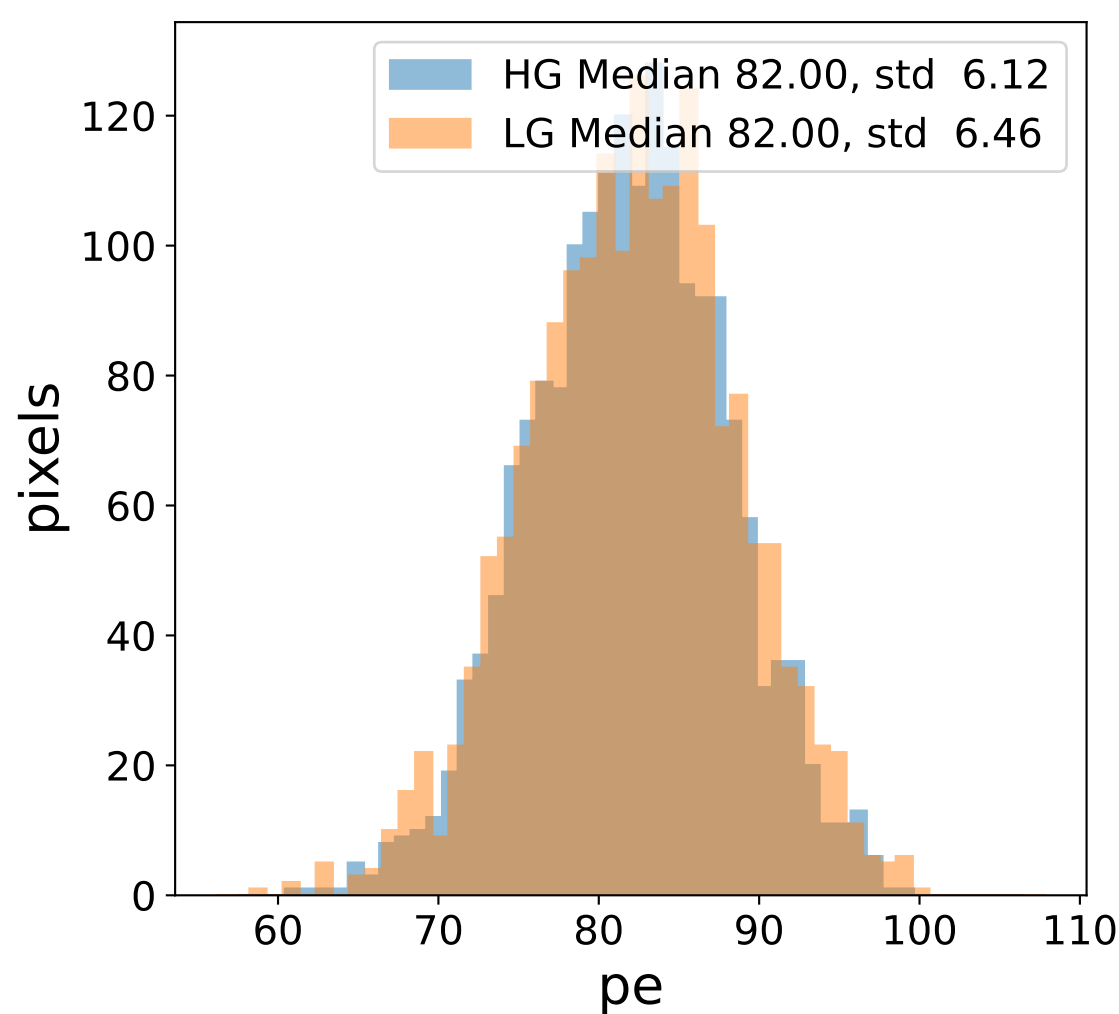
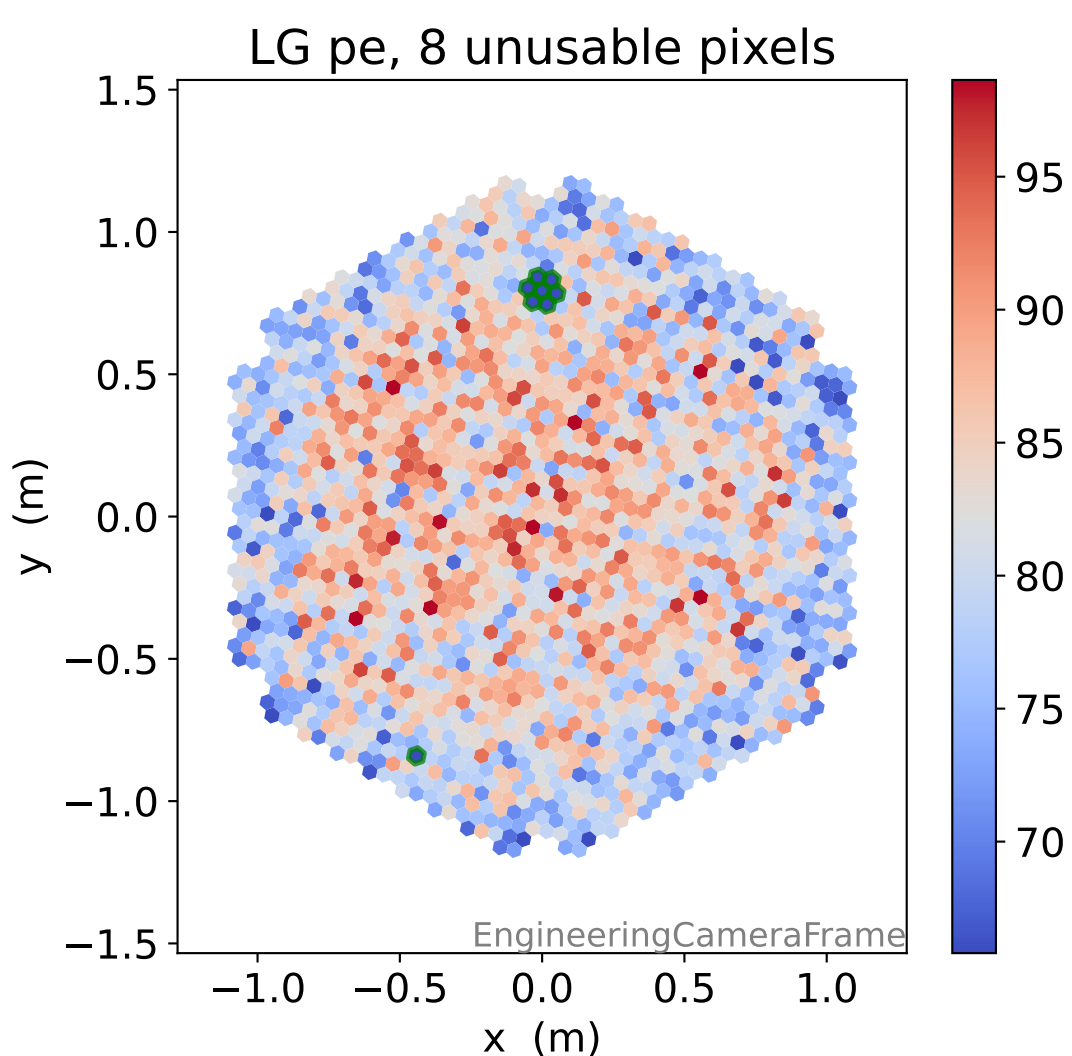
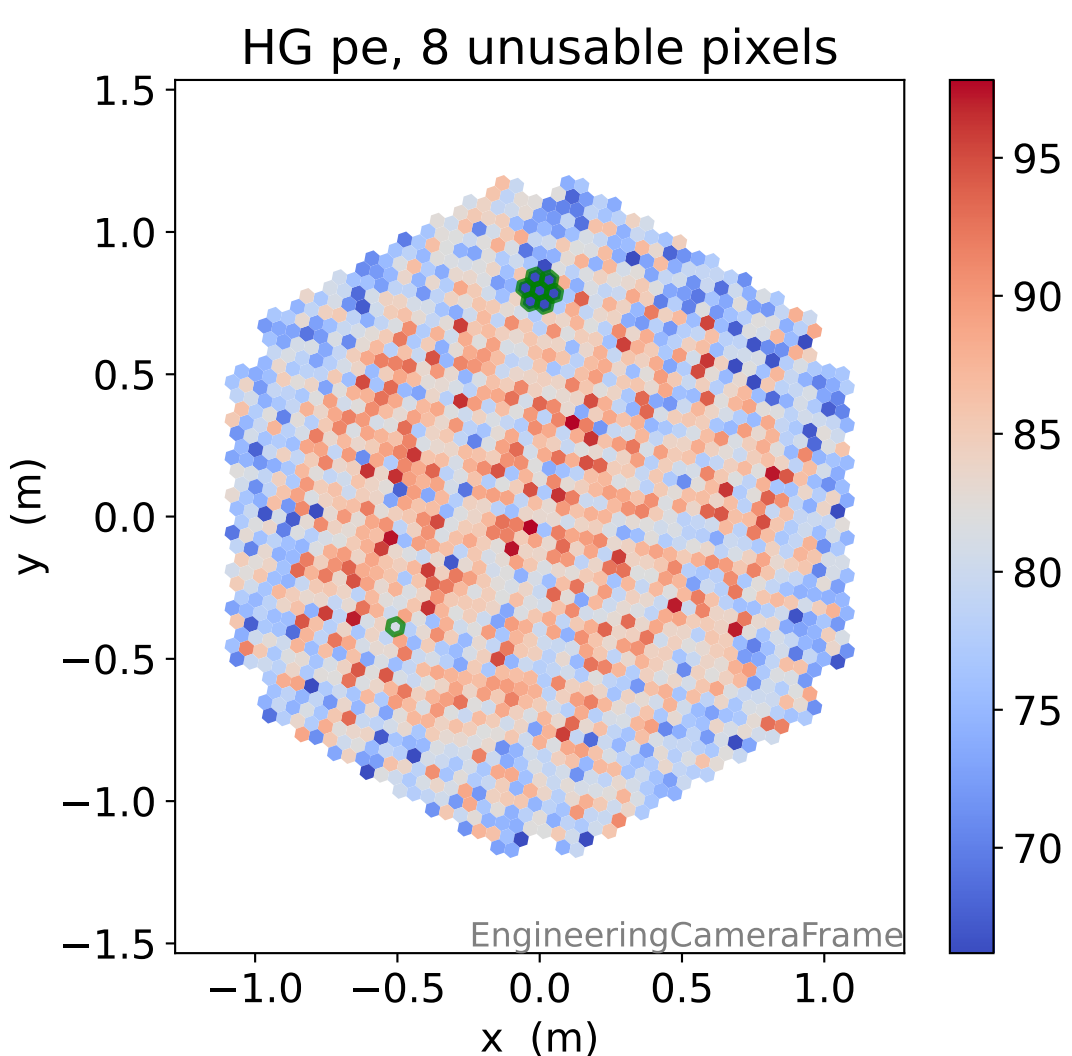
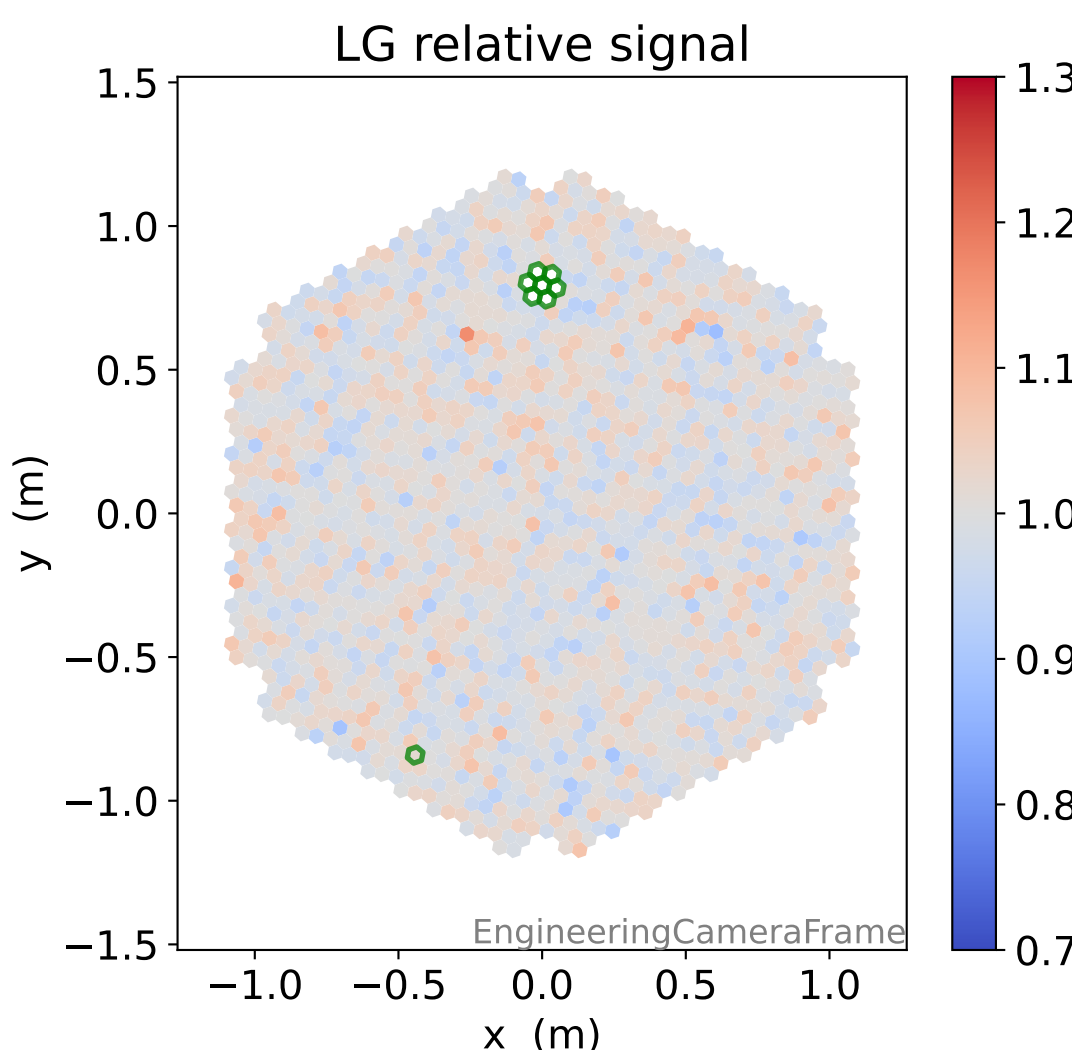
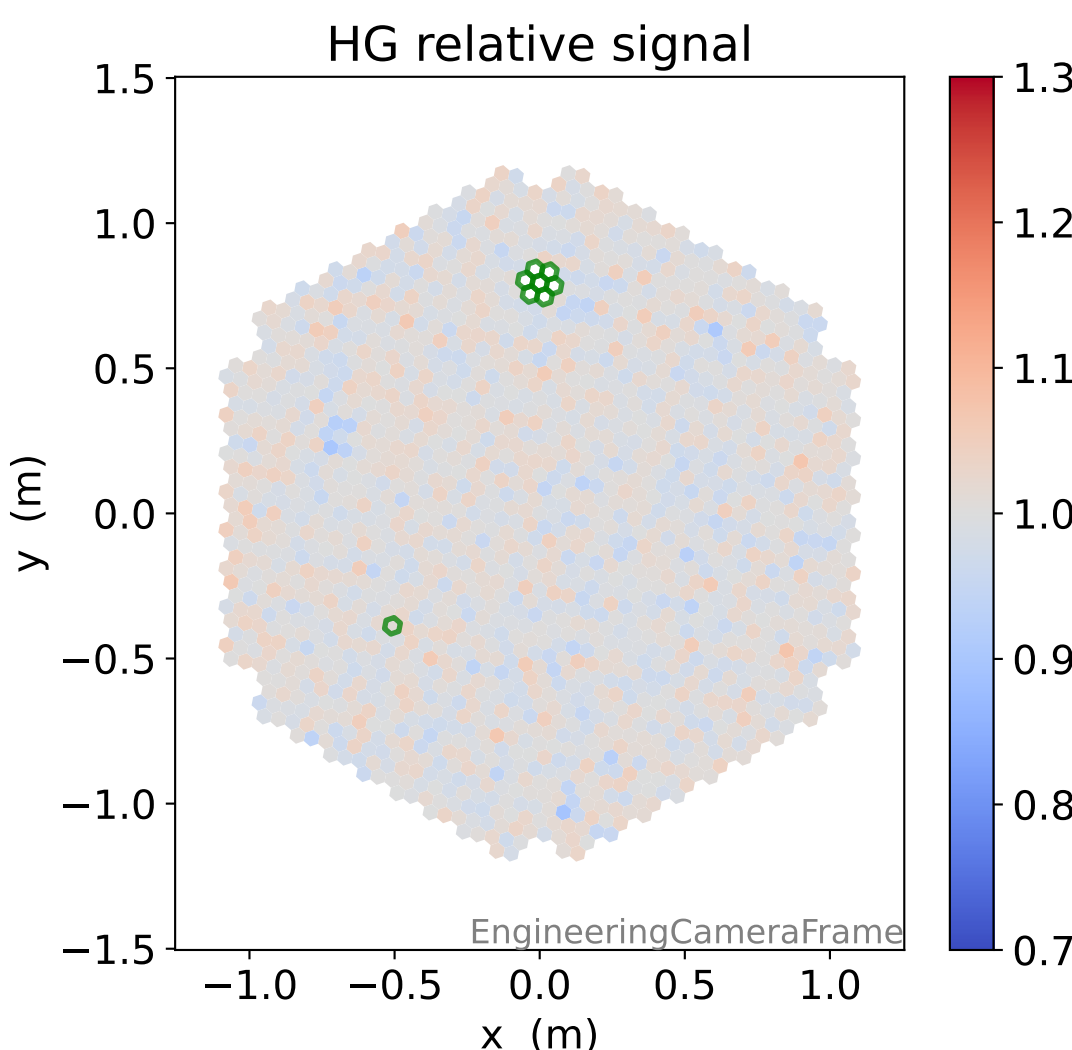
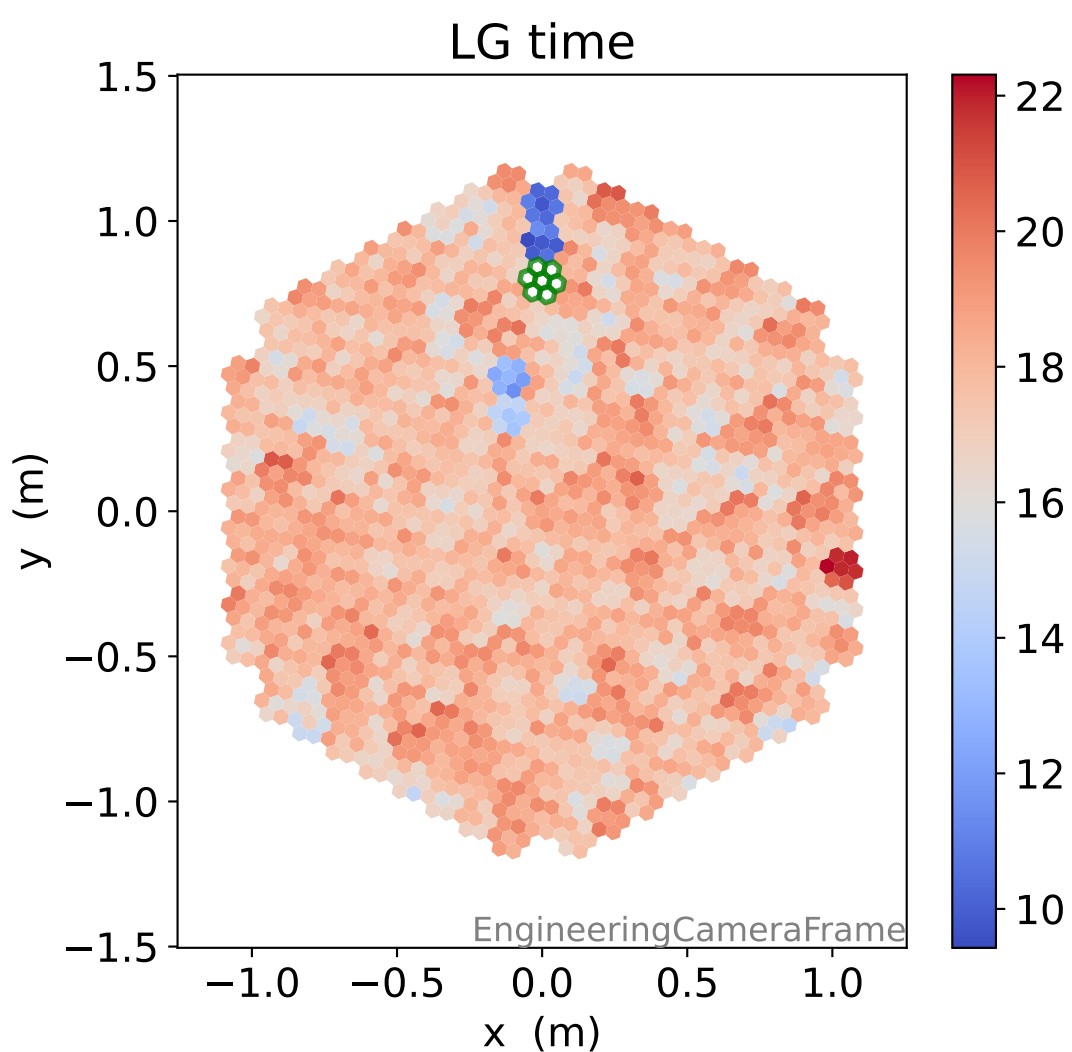
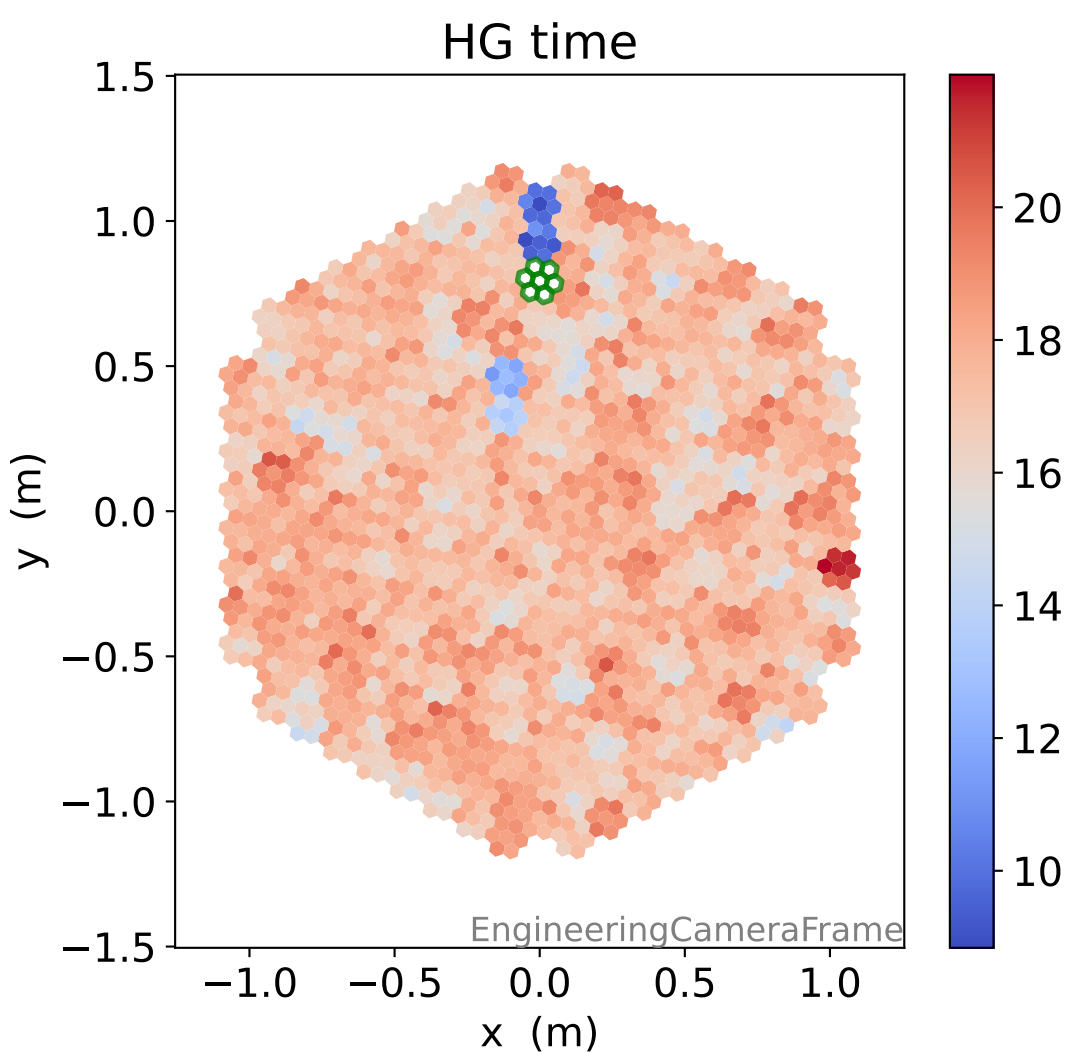


### LG pedestal std [ADC]



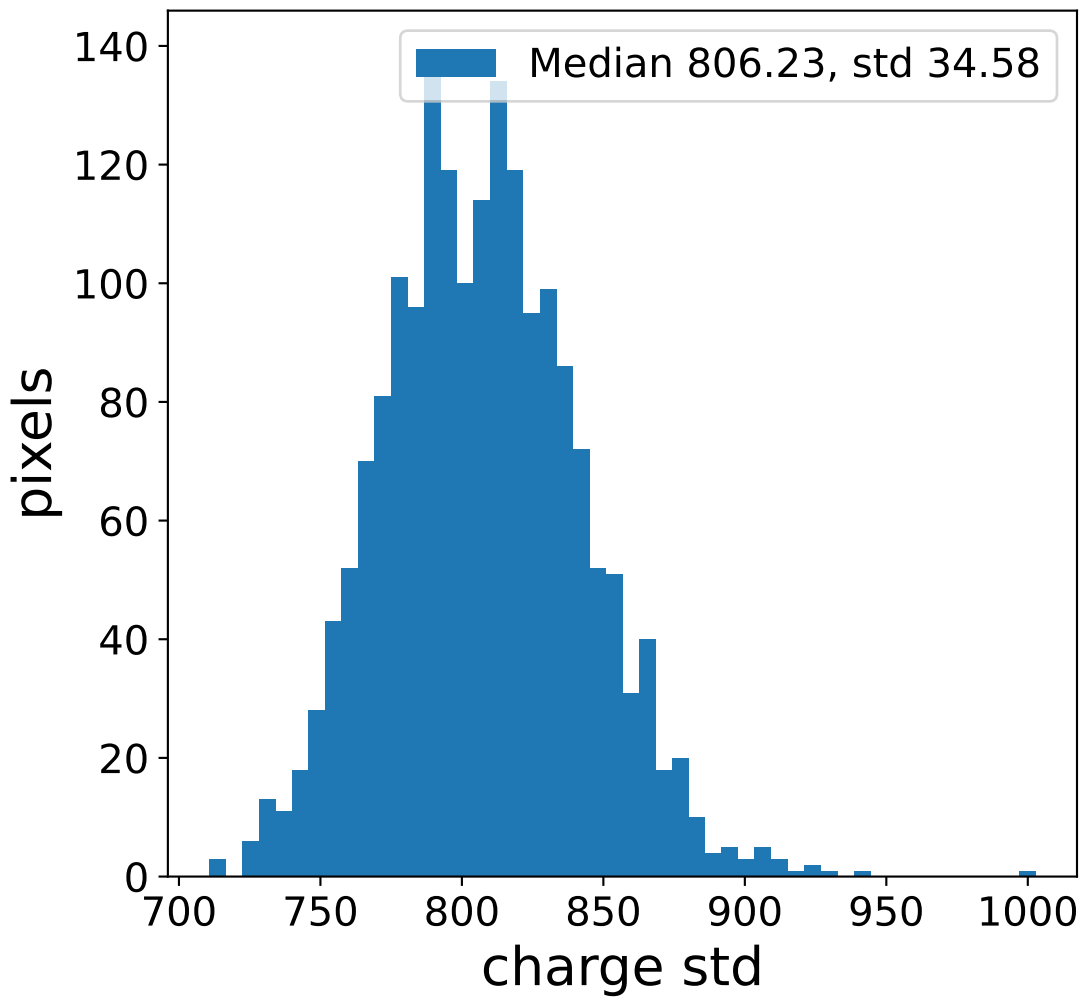
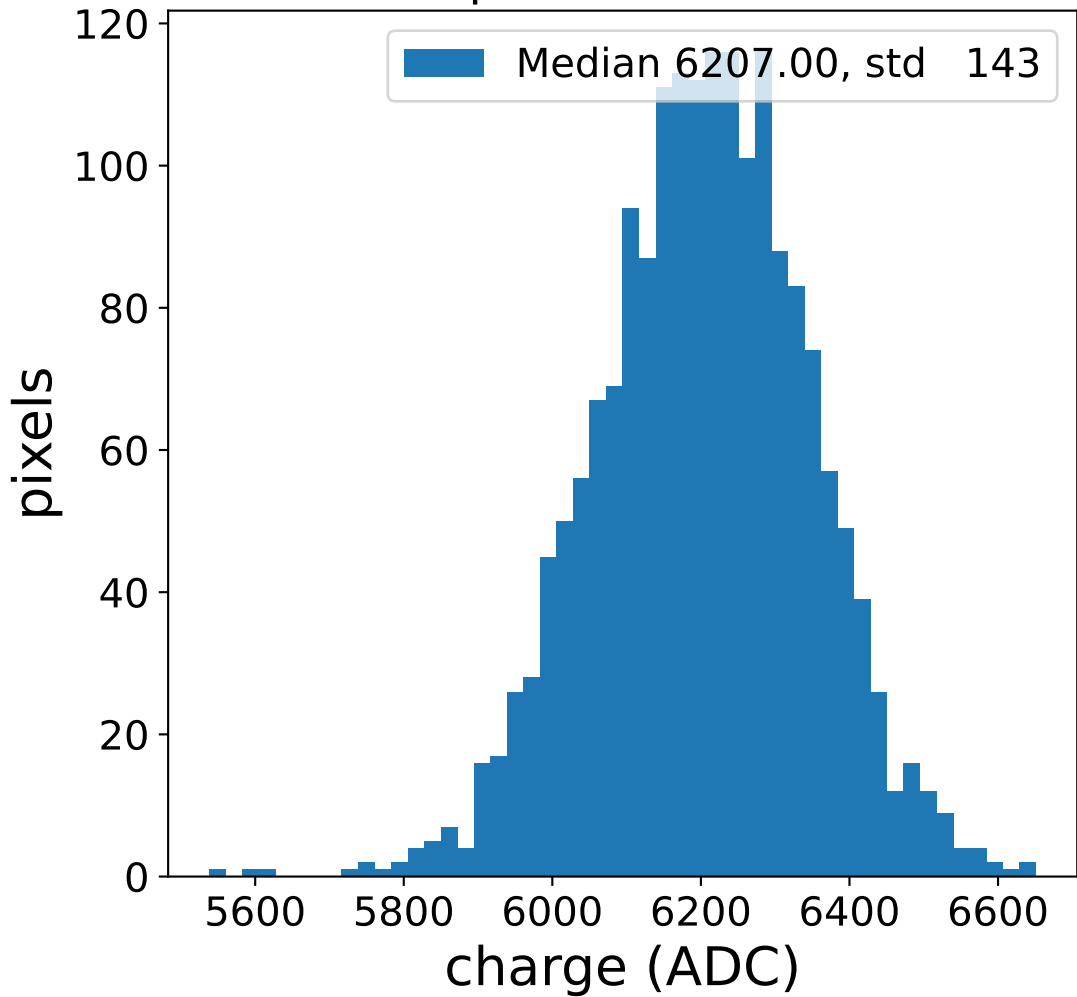


# Run 11401

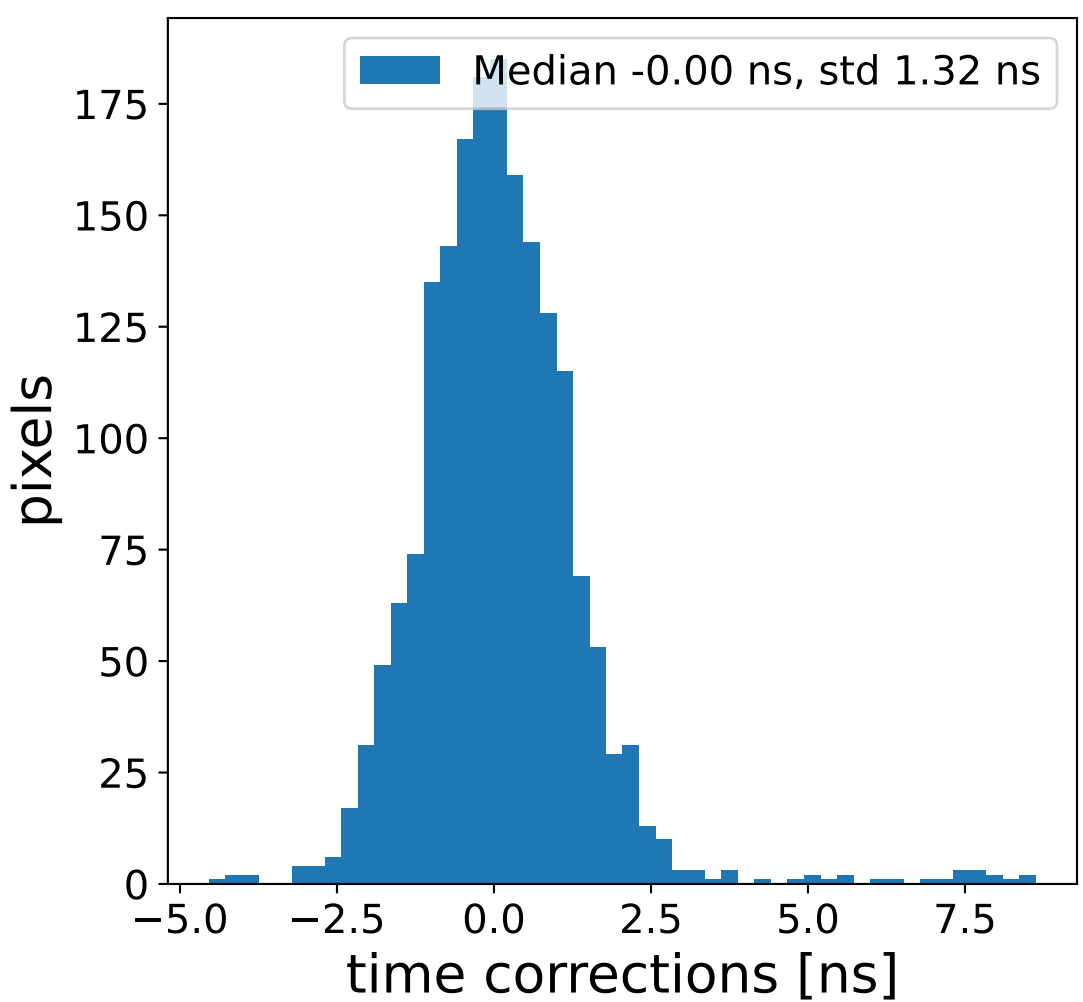
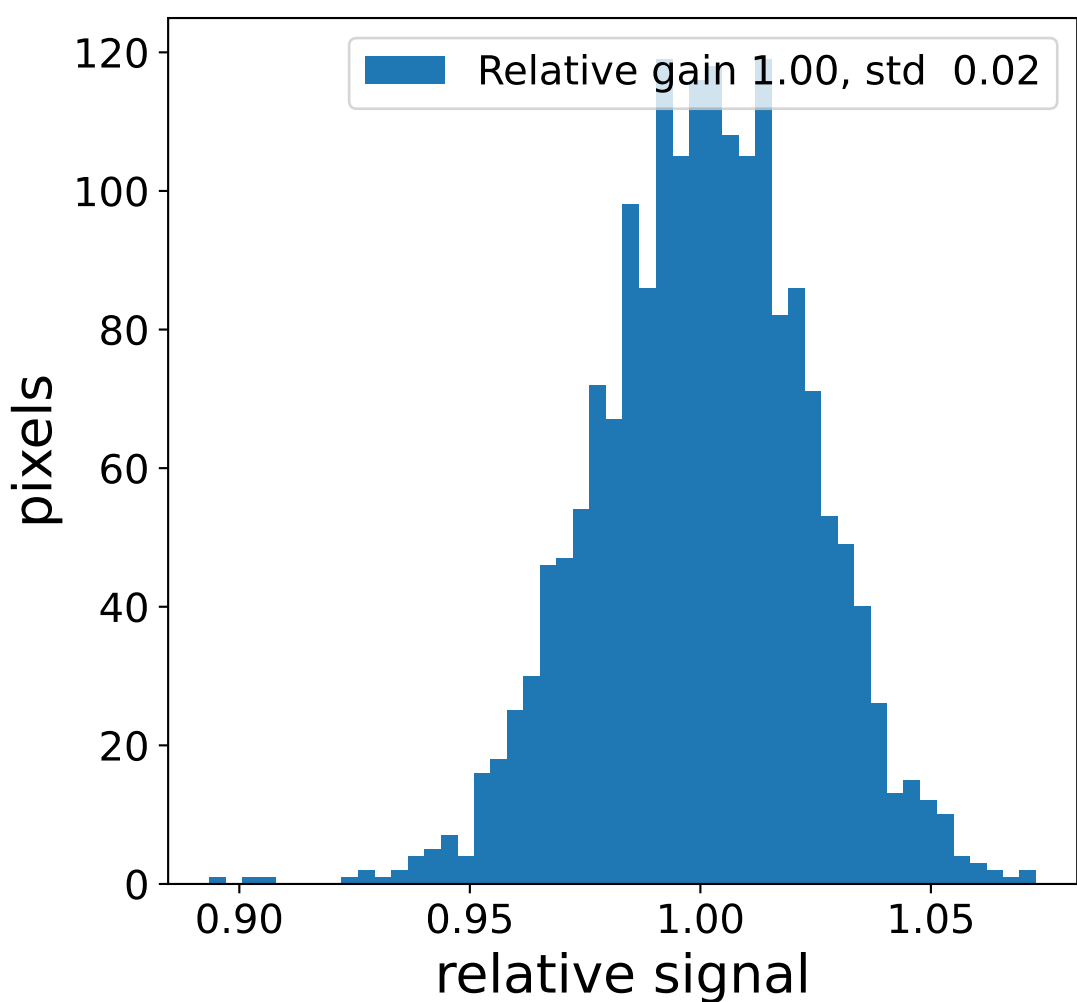
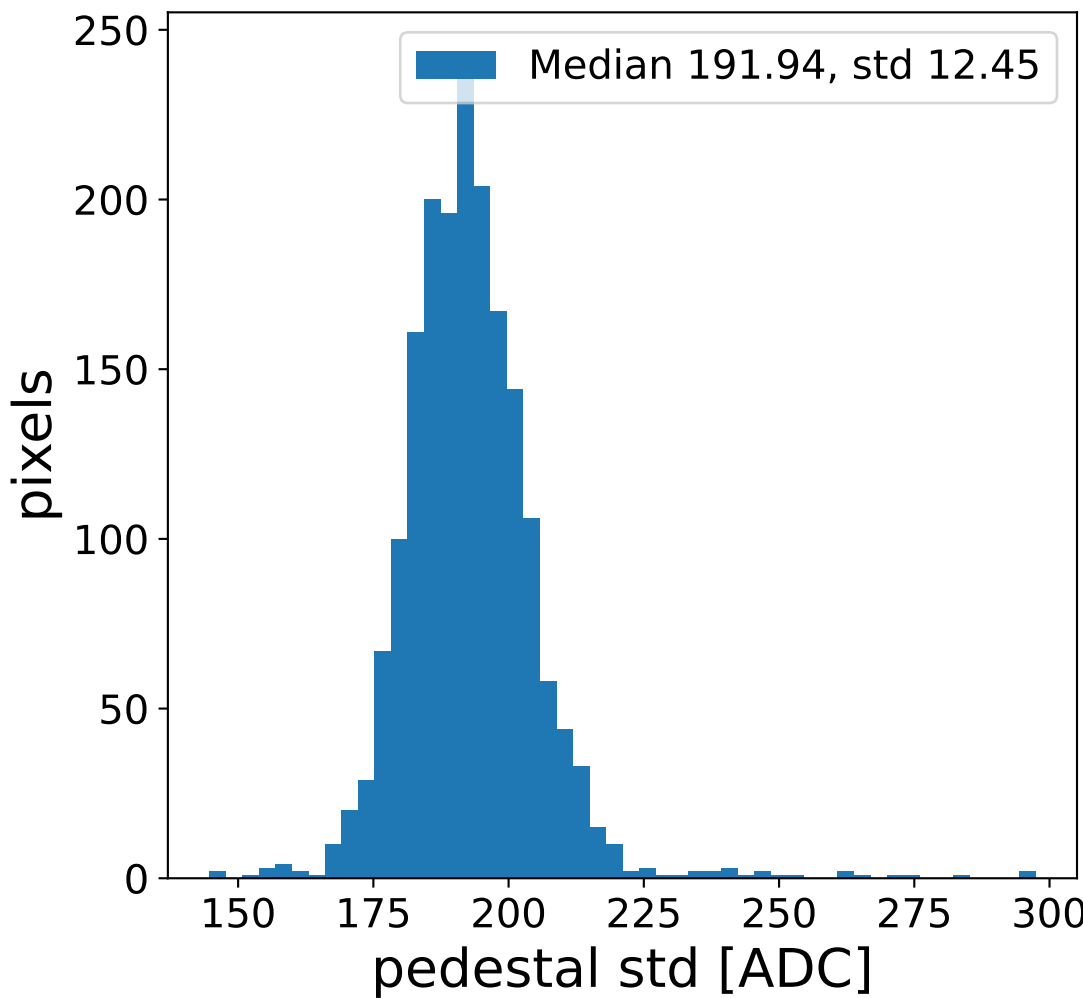
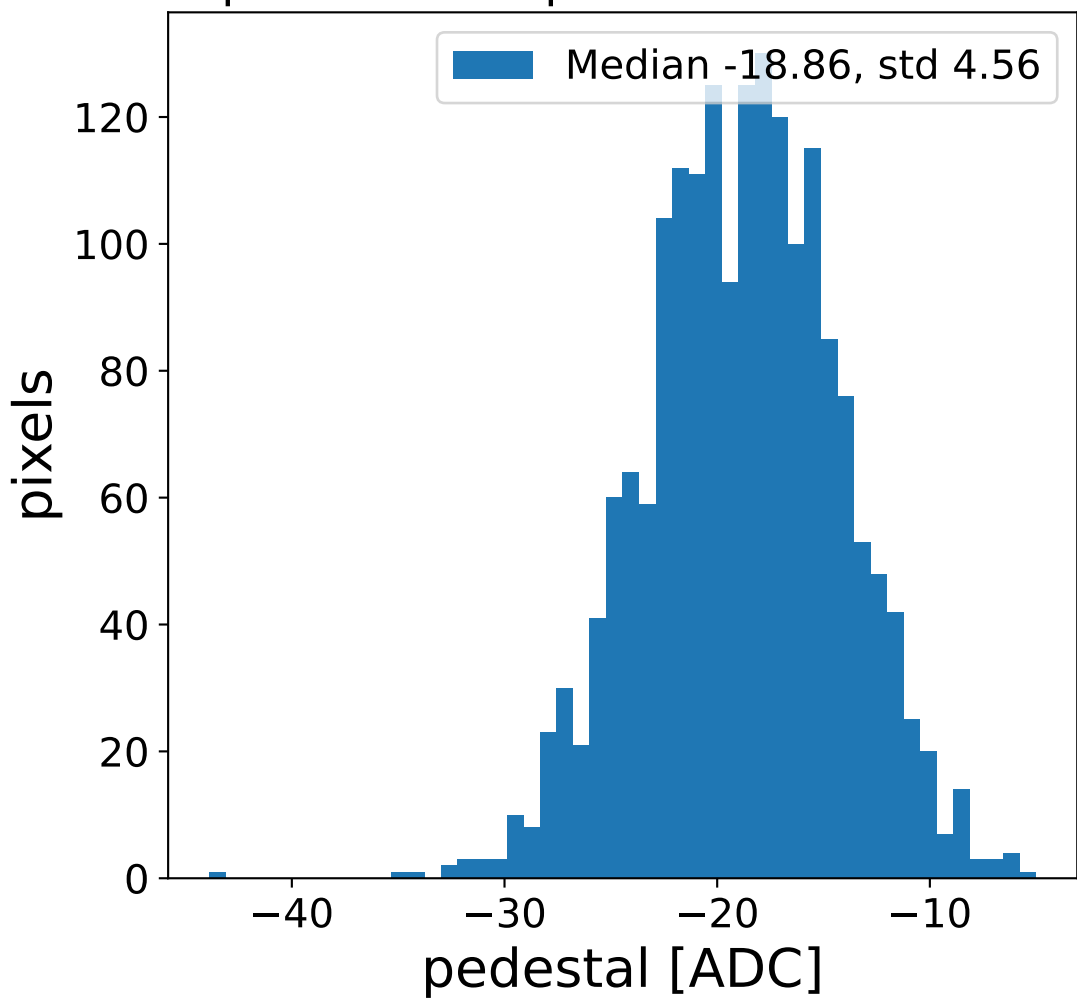


# Run 11401 channel: HG

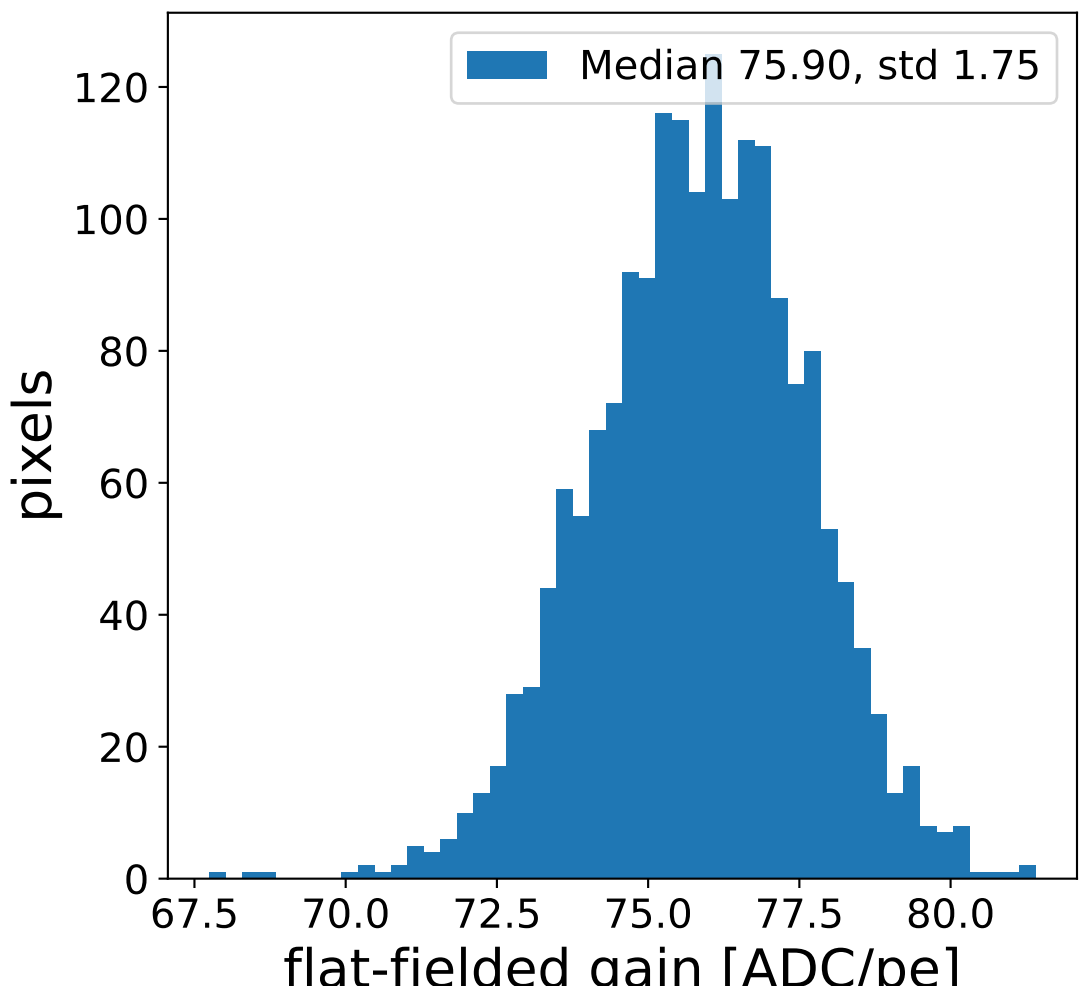
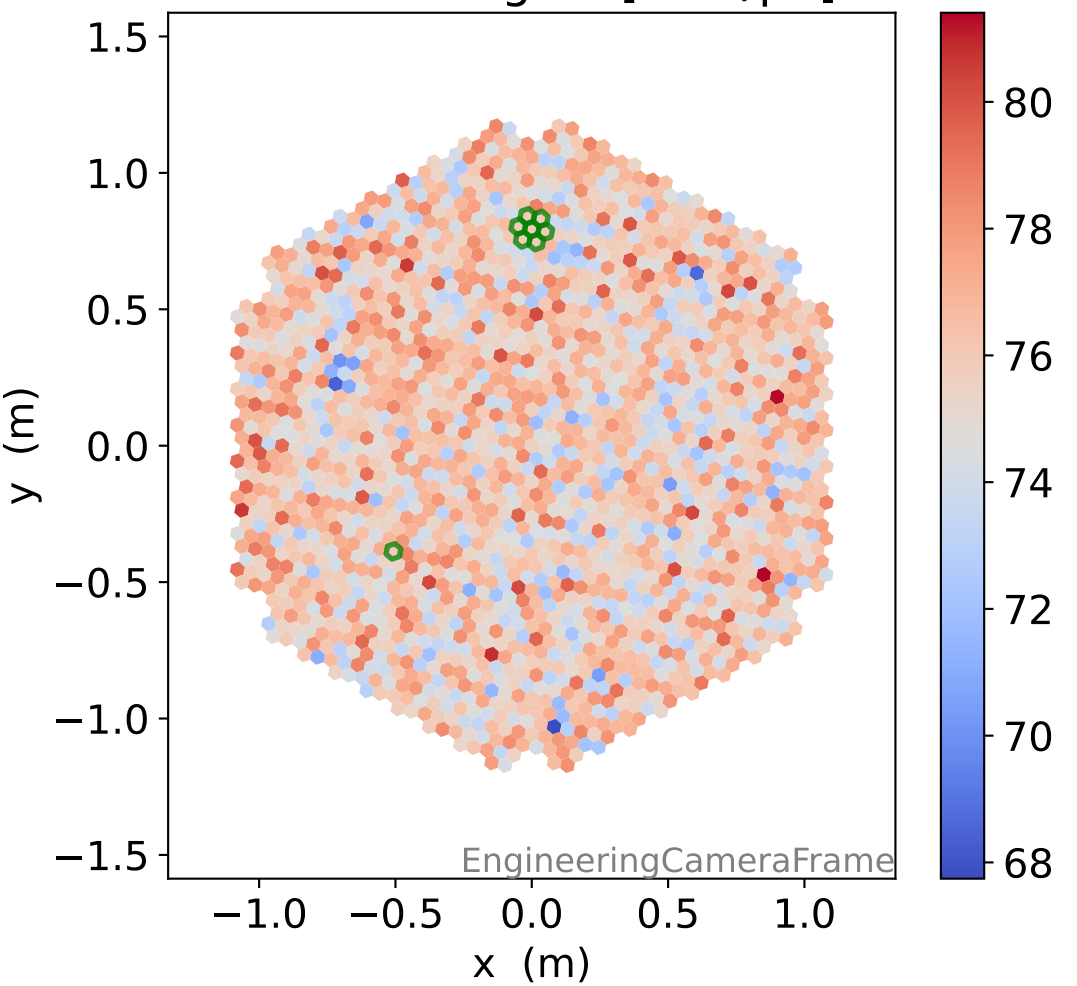
FF sample of 10000 events



pedestal sample of 10000 events

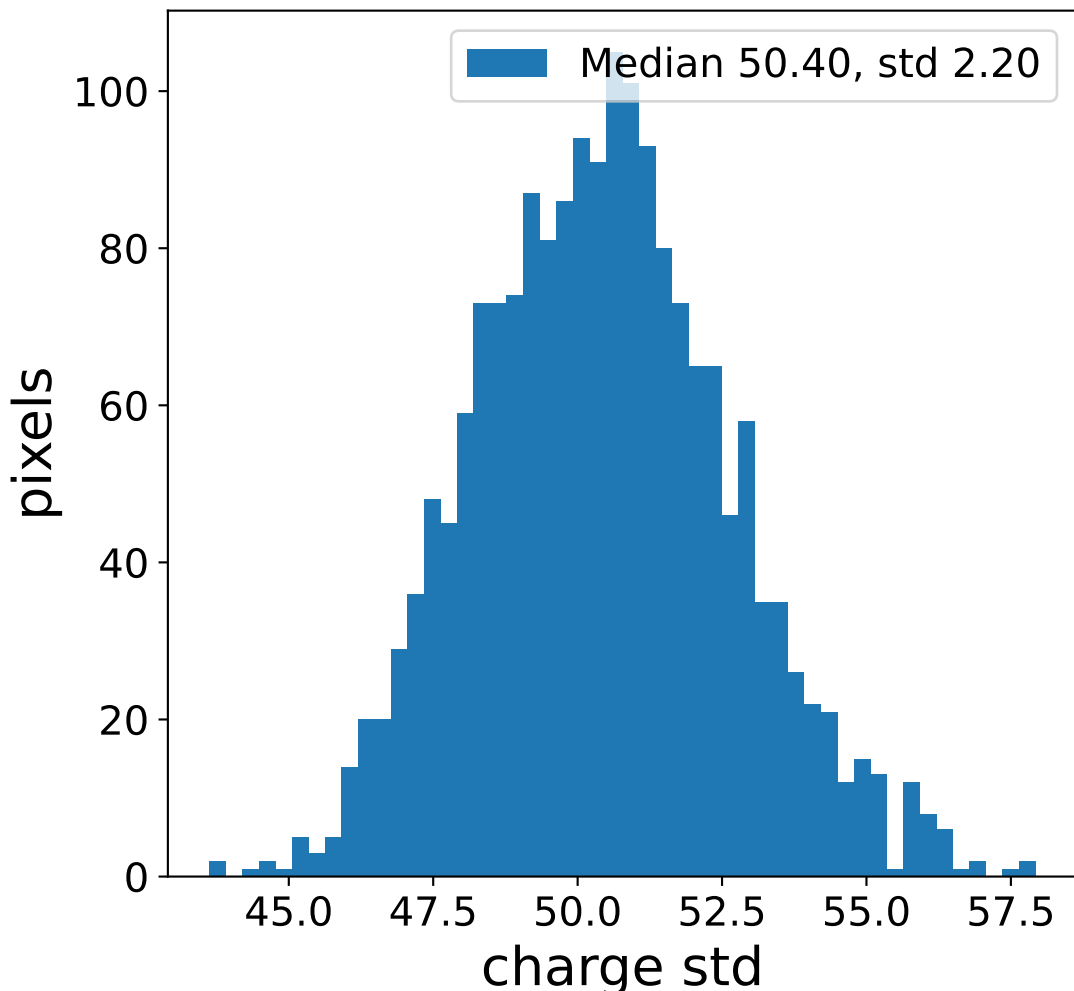
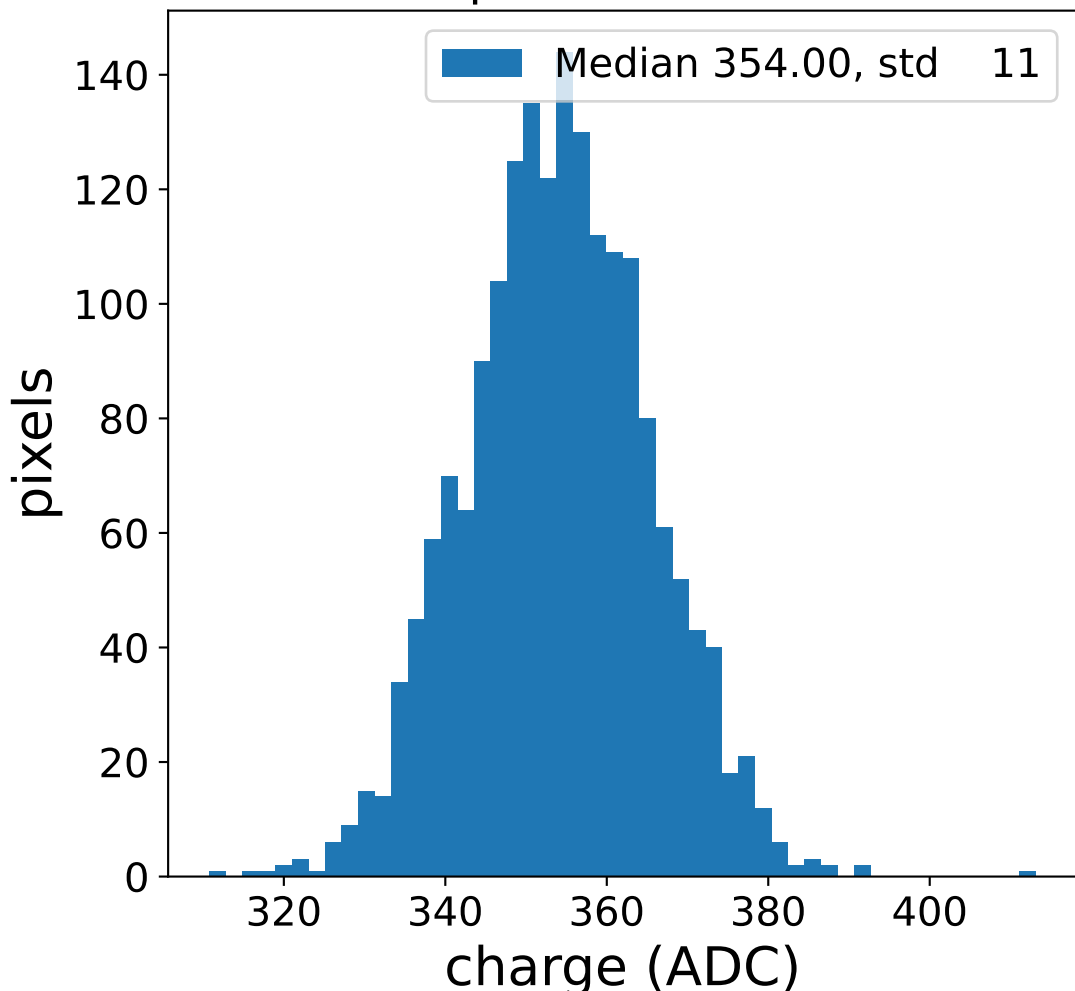


flat-fielded gain [ADC/pe]

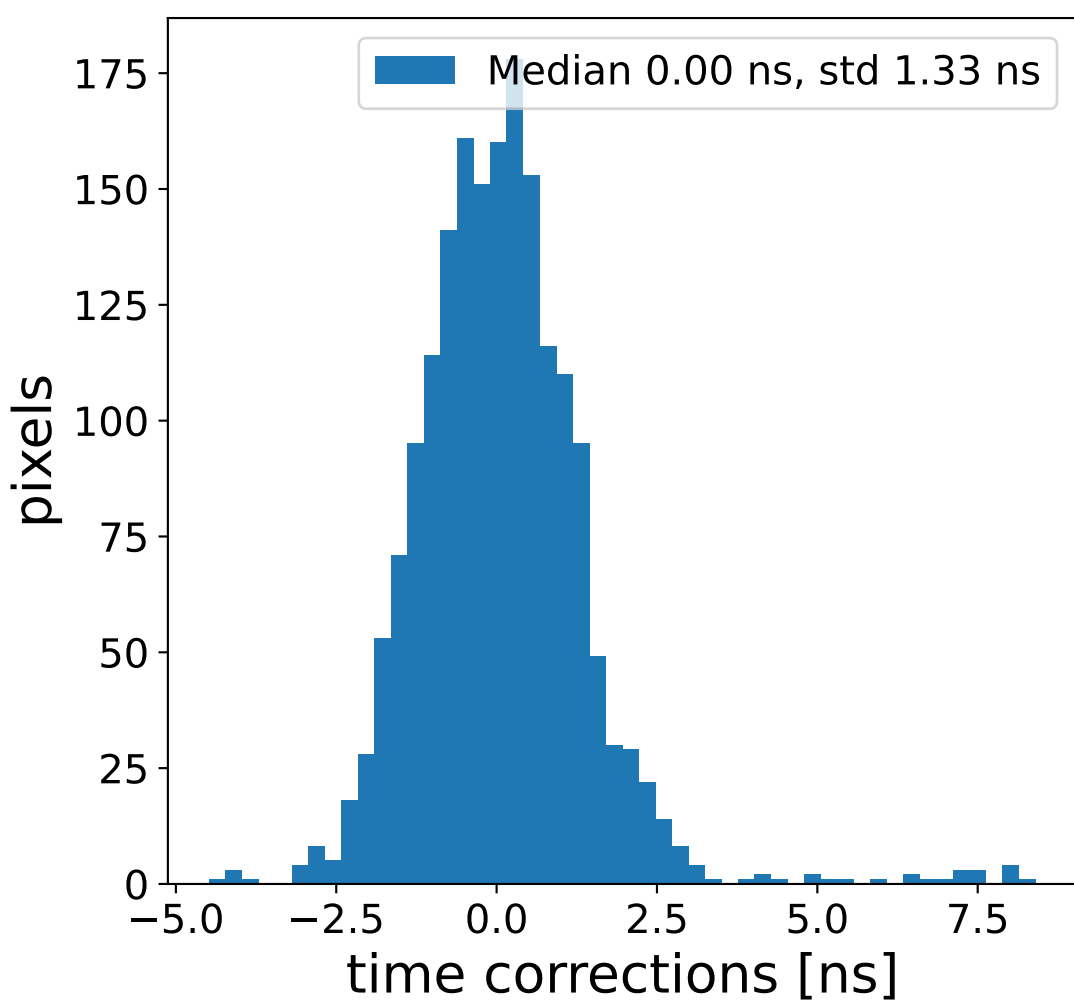
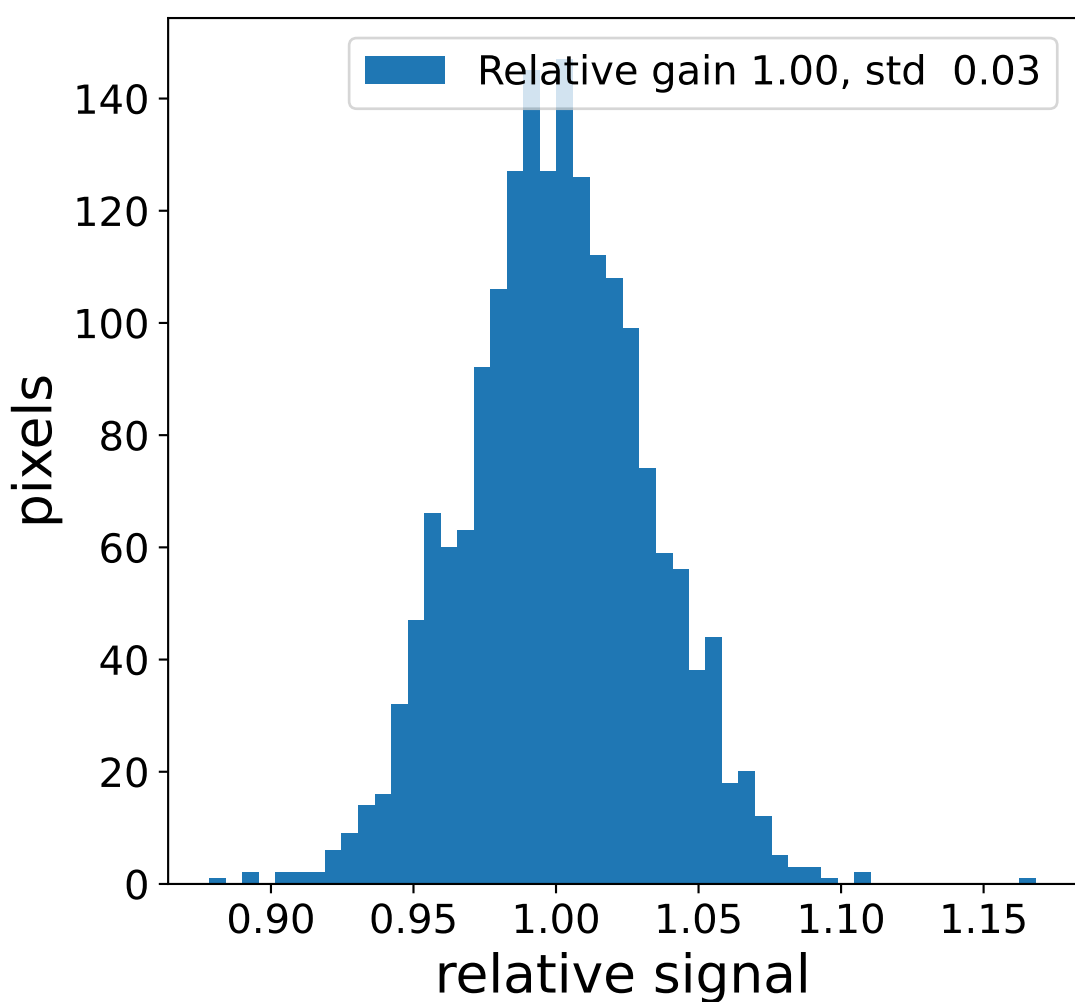
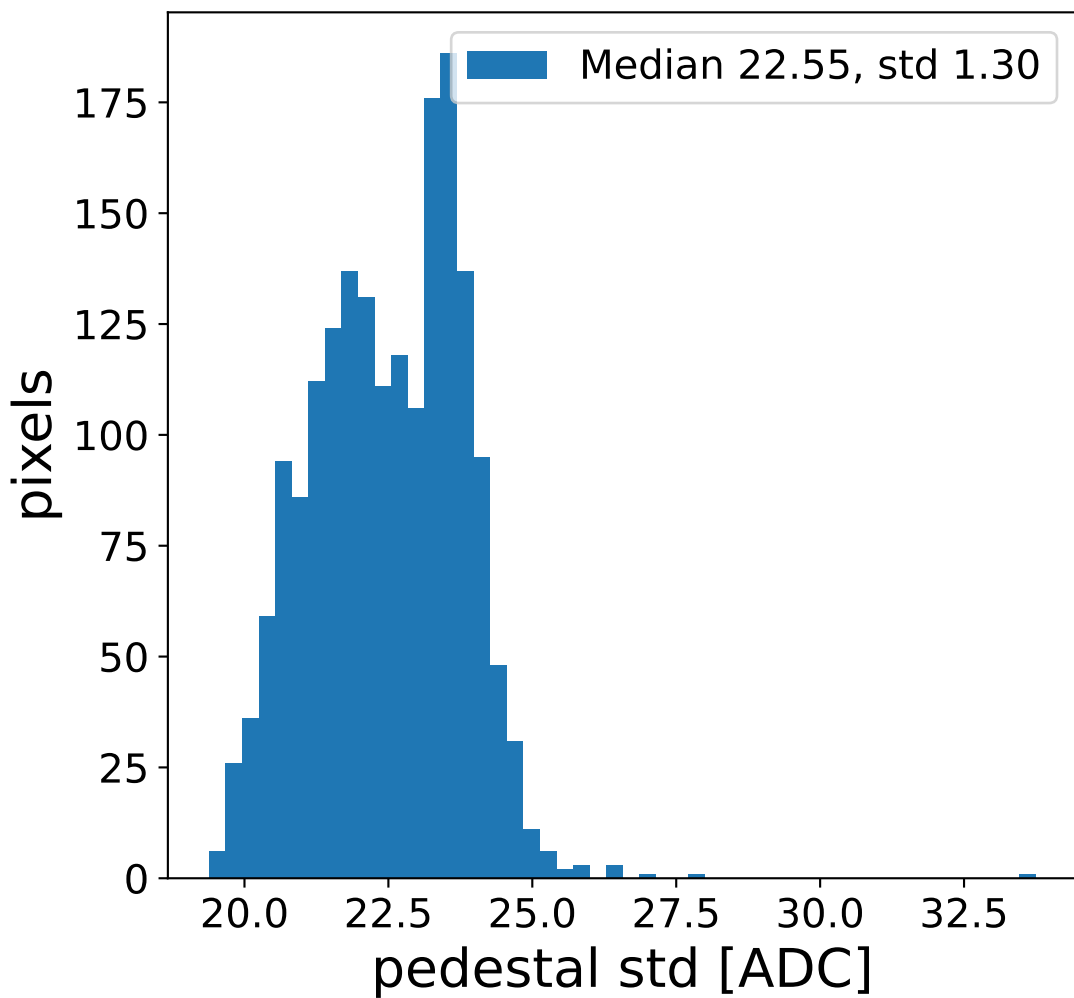
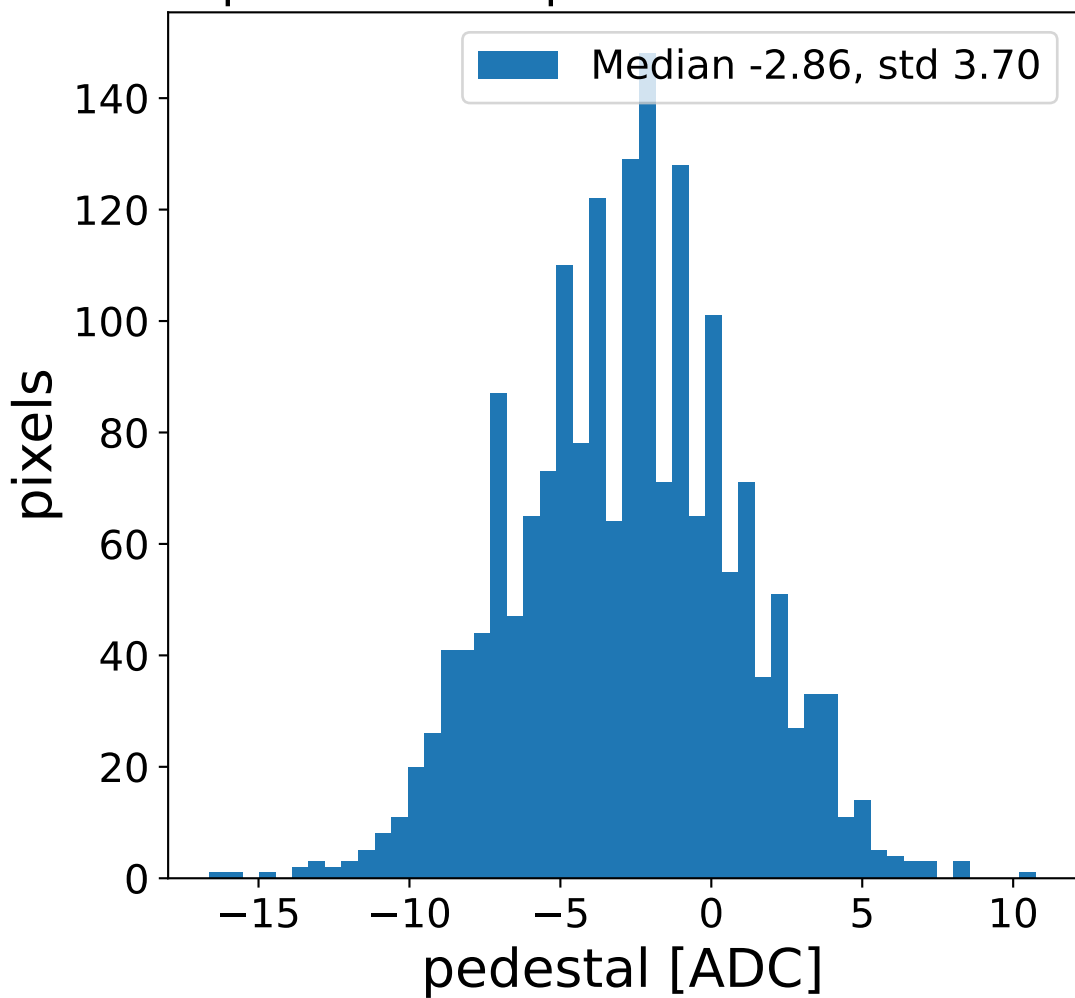


# Run 11401 channel: LG

## FF sample of 10000 events



## pedestal sample of 10000 events



## flat-fielded gain [ADC/pe]

