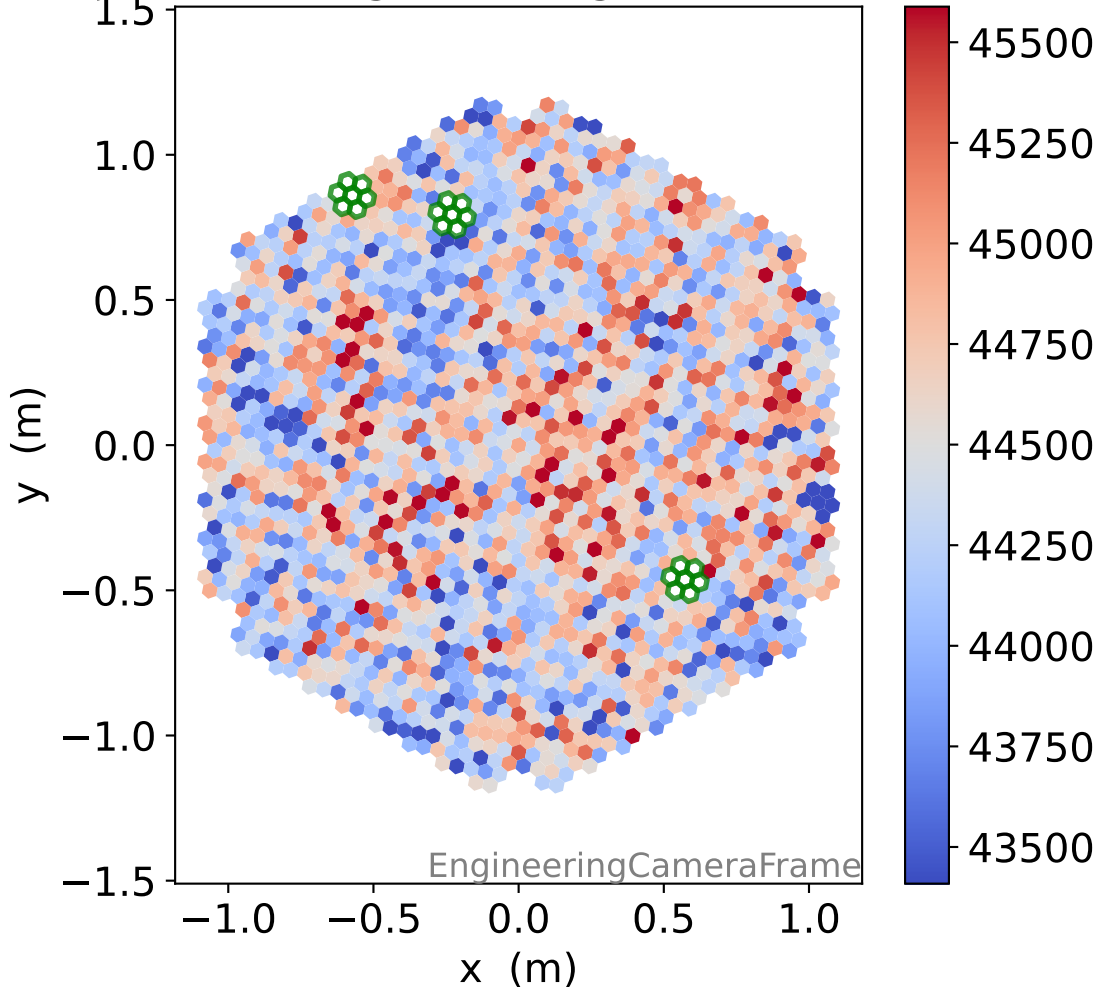
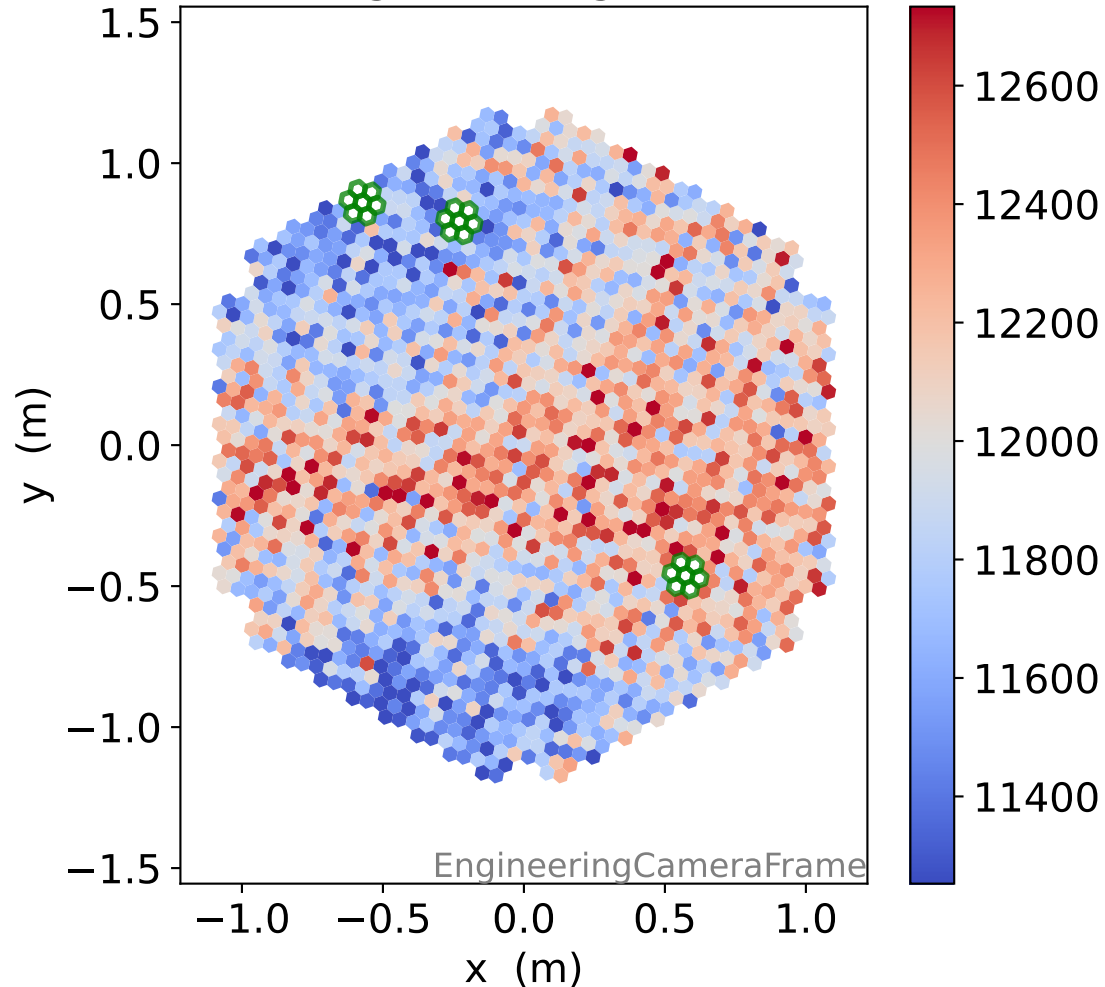


Run 19170, Cat-A calibration

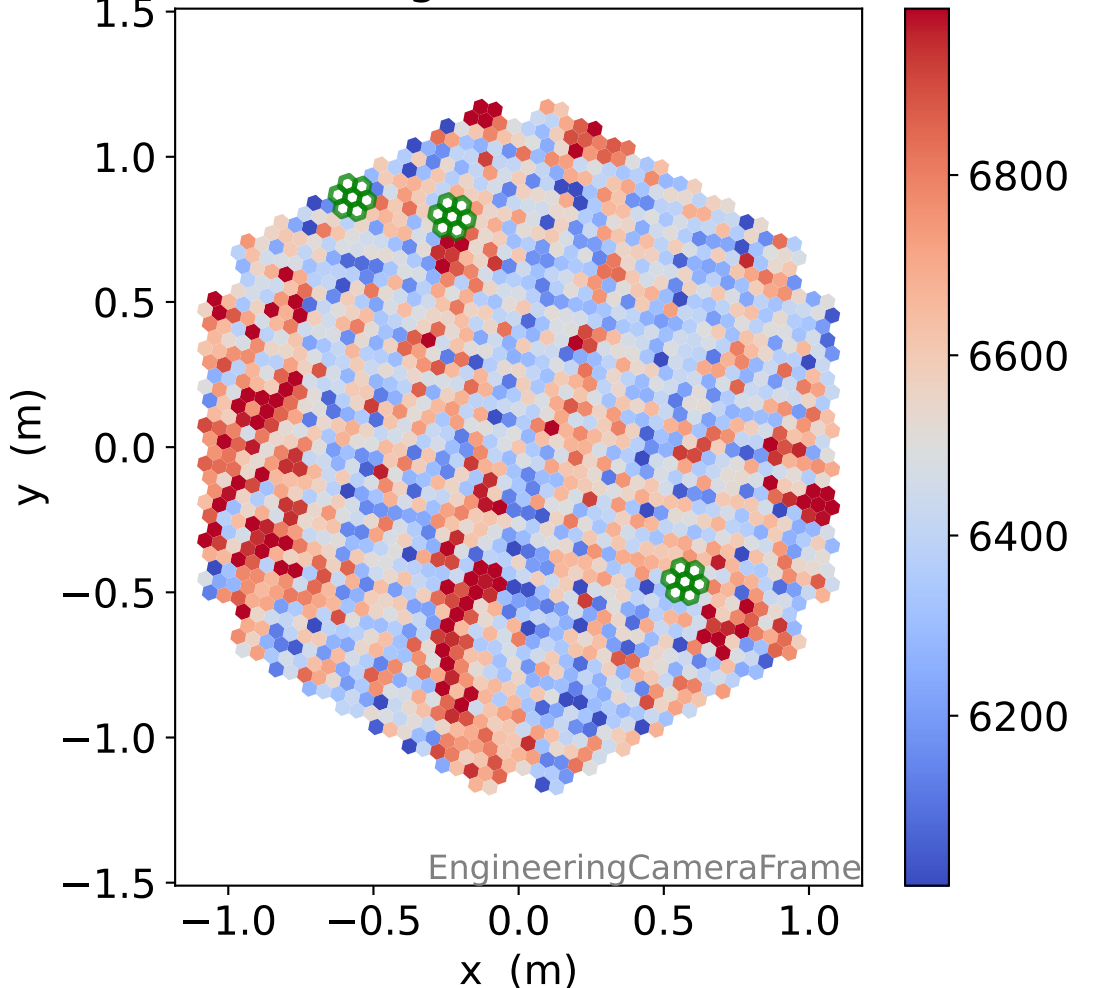
HG signal charge [ADC]



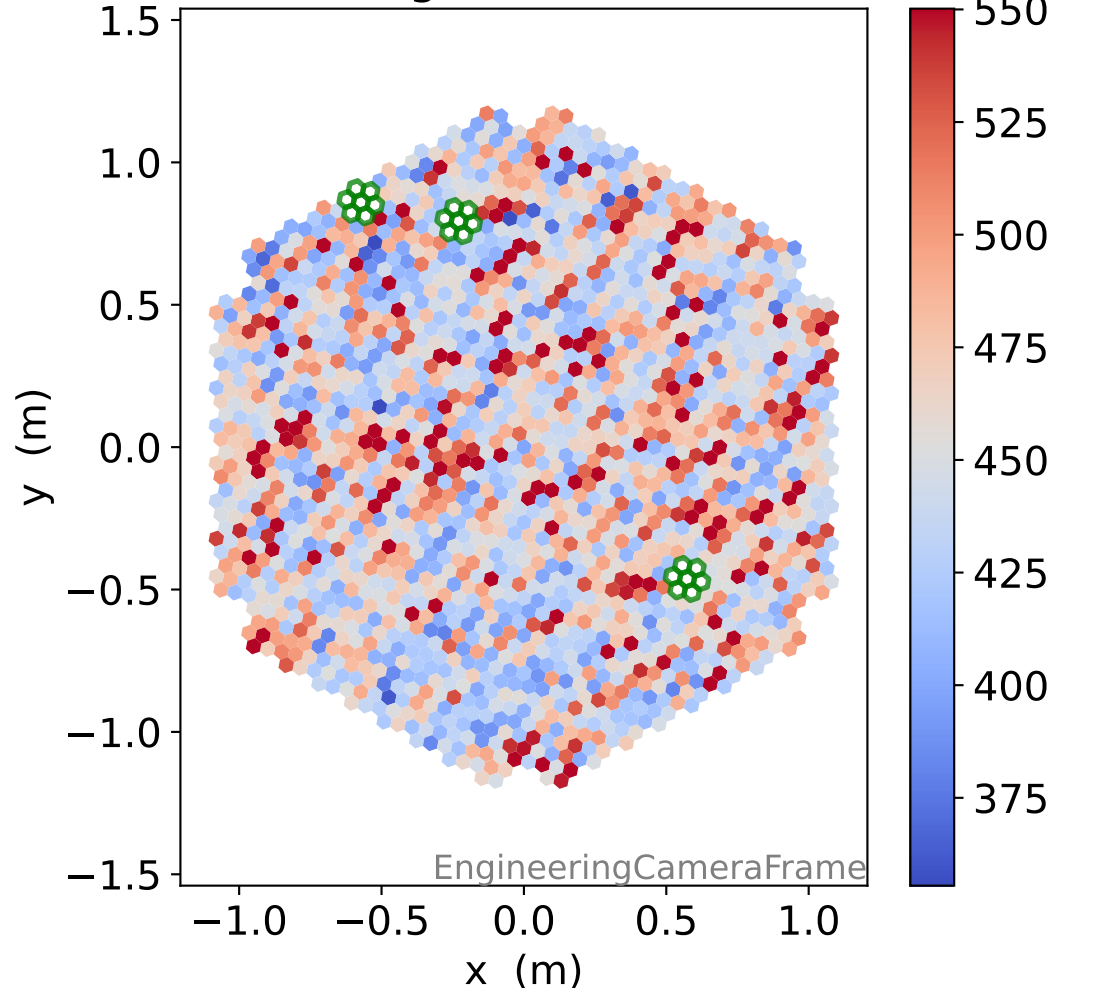
LG signal charge [ADC]



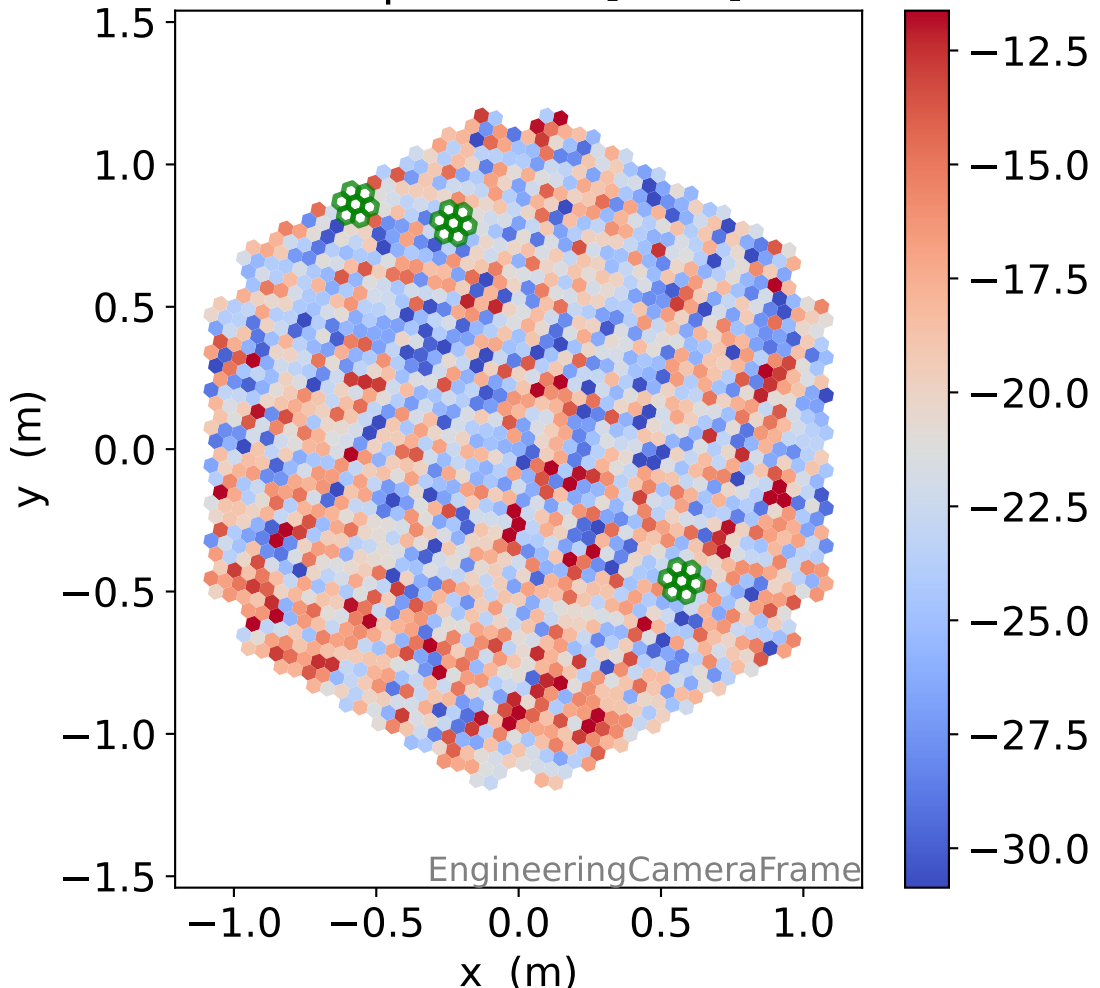
HG signal std [ADC]



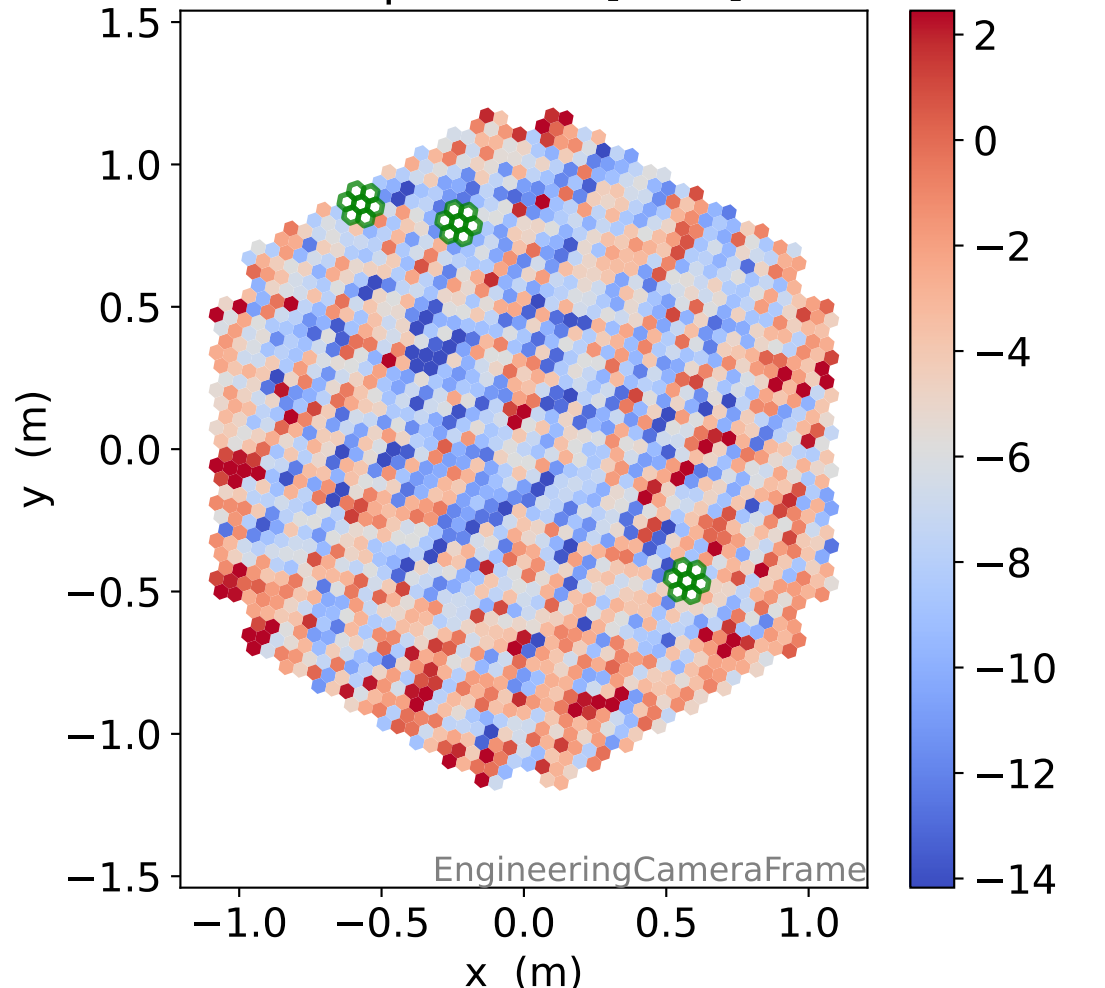
LG signal std [ADC]



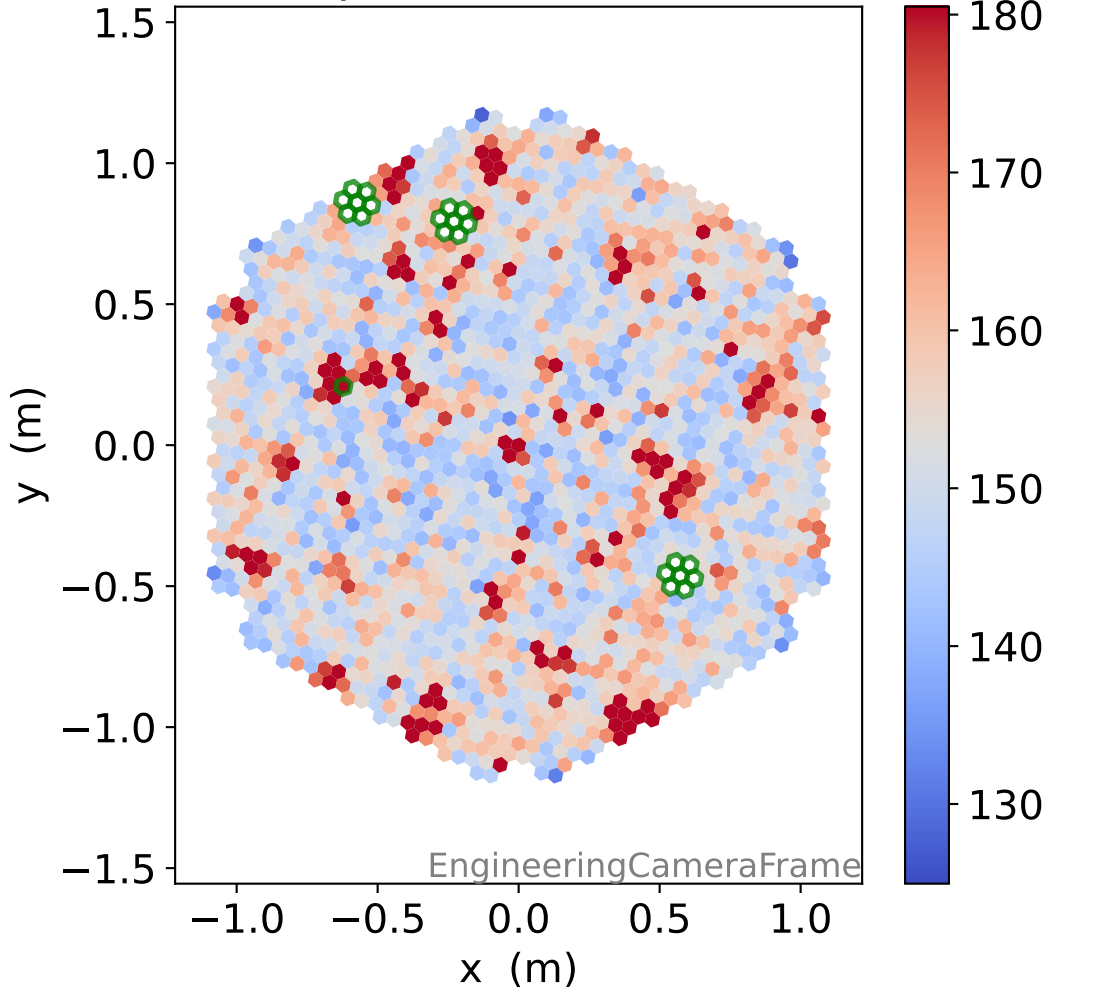
HG pedestal [ADC]



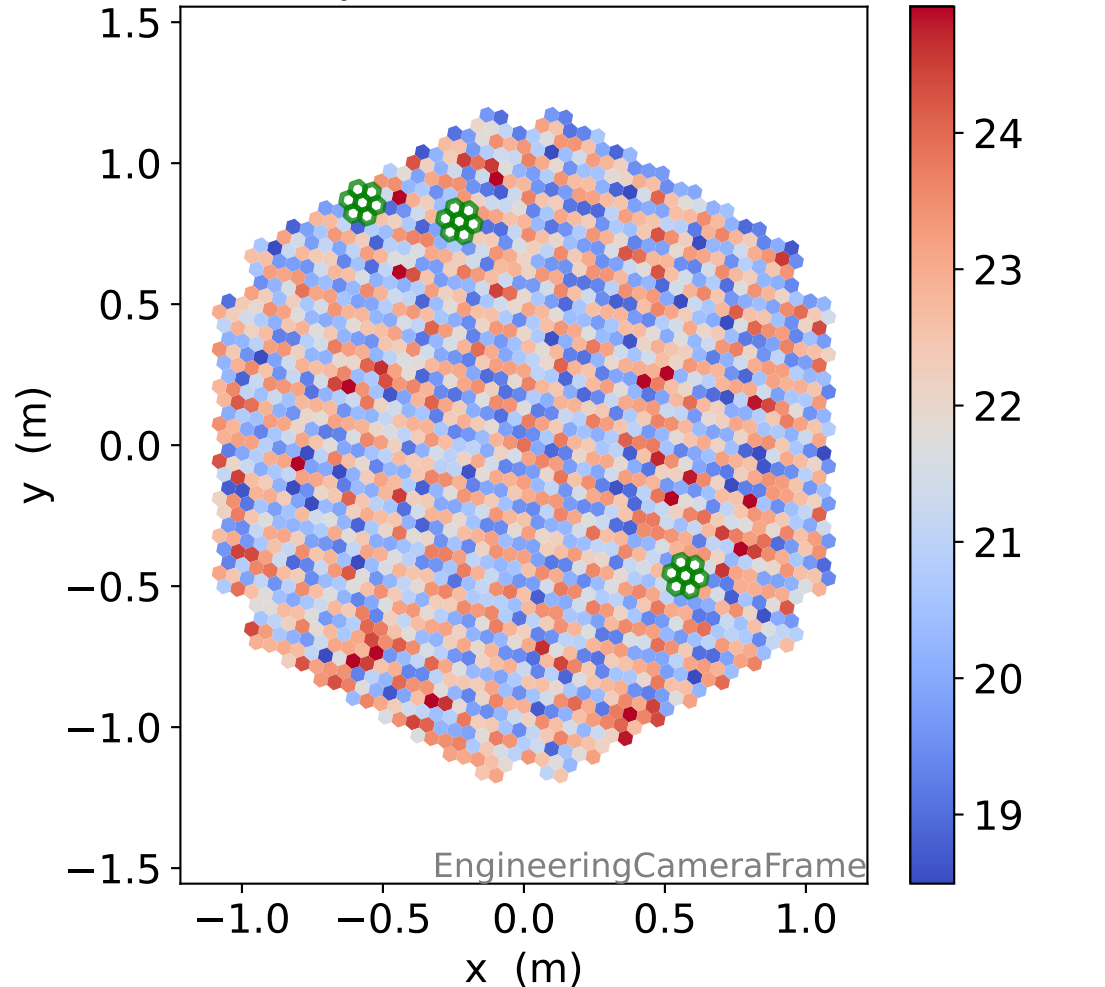
LG pedestal [ADC]



HG pedestal std [ADC]

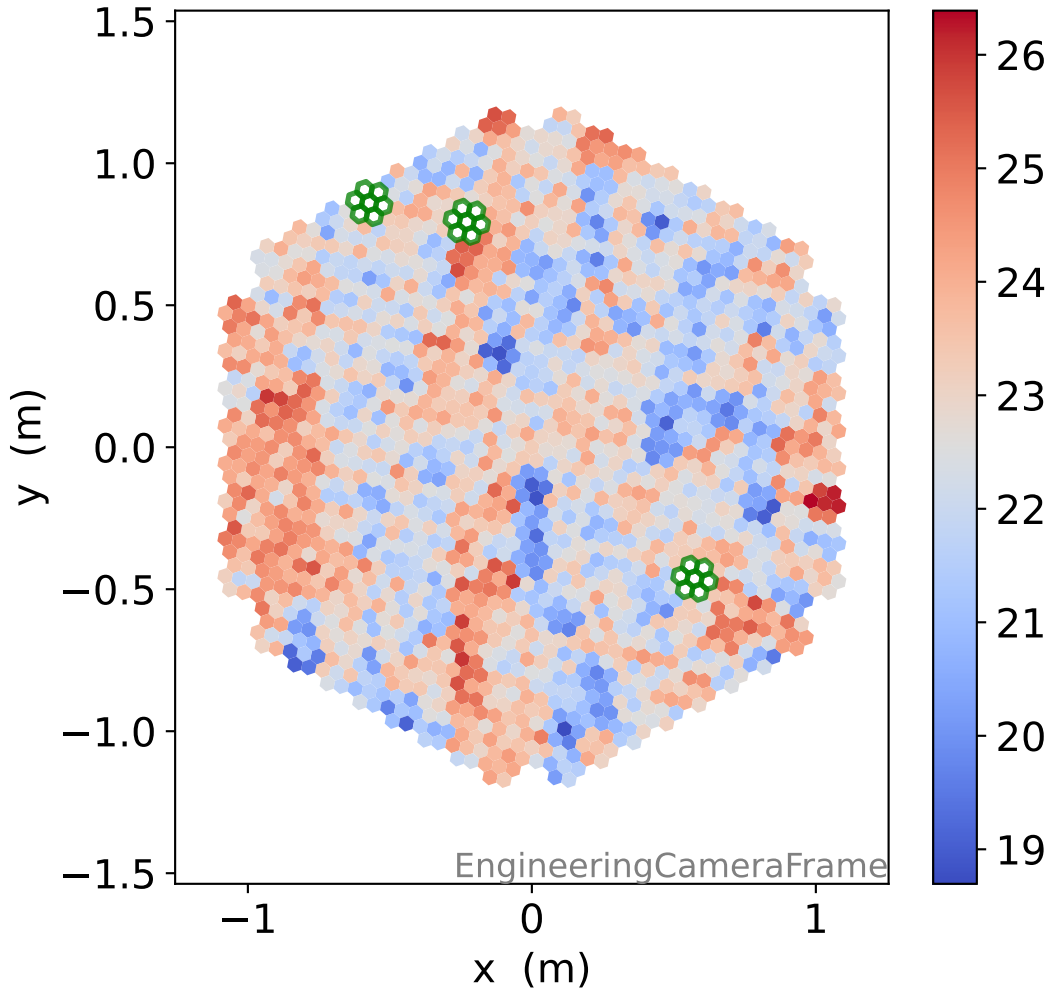


LG pedestal std [ADC]

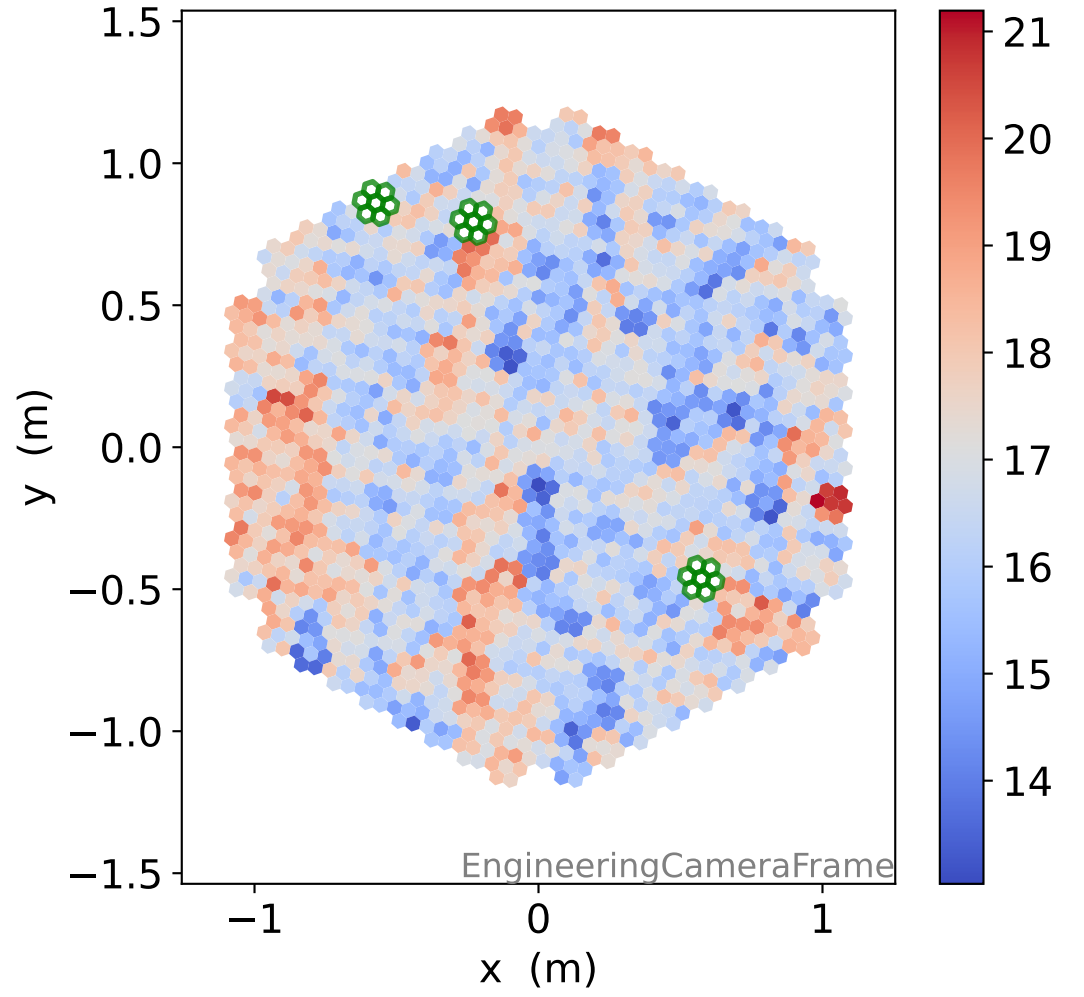


Run 19170

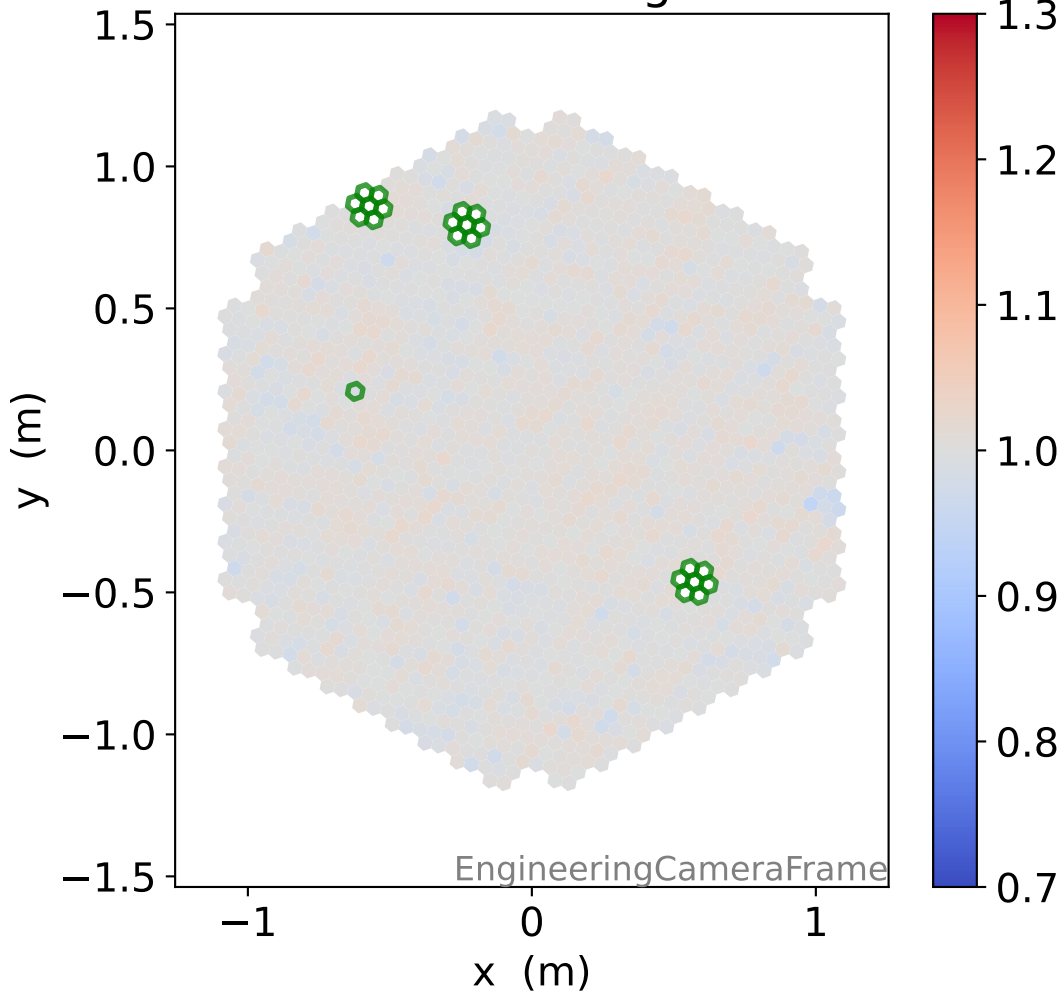
HG time



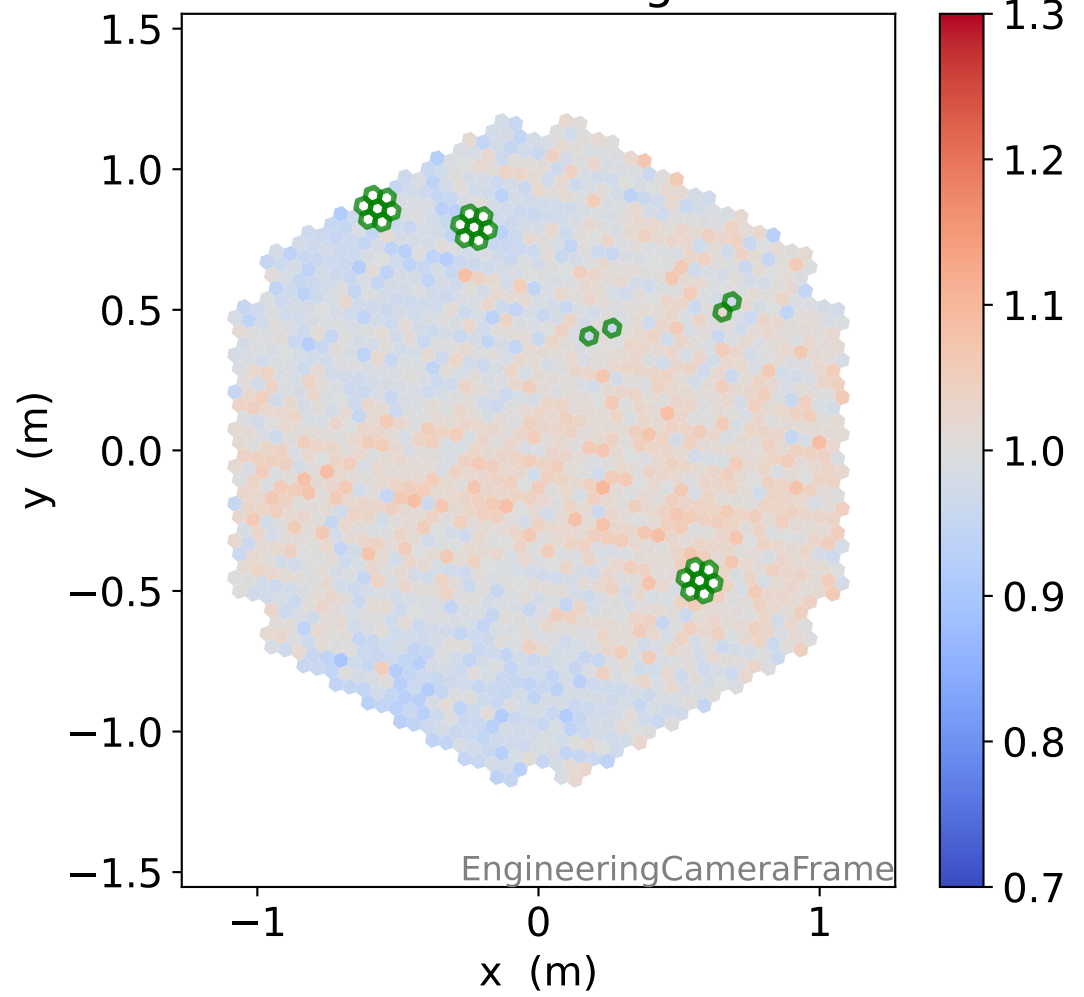
LG time



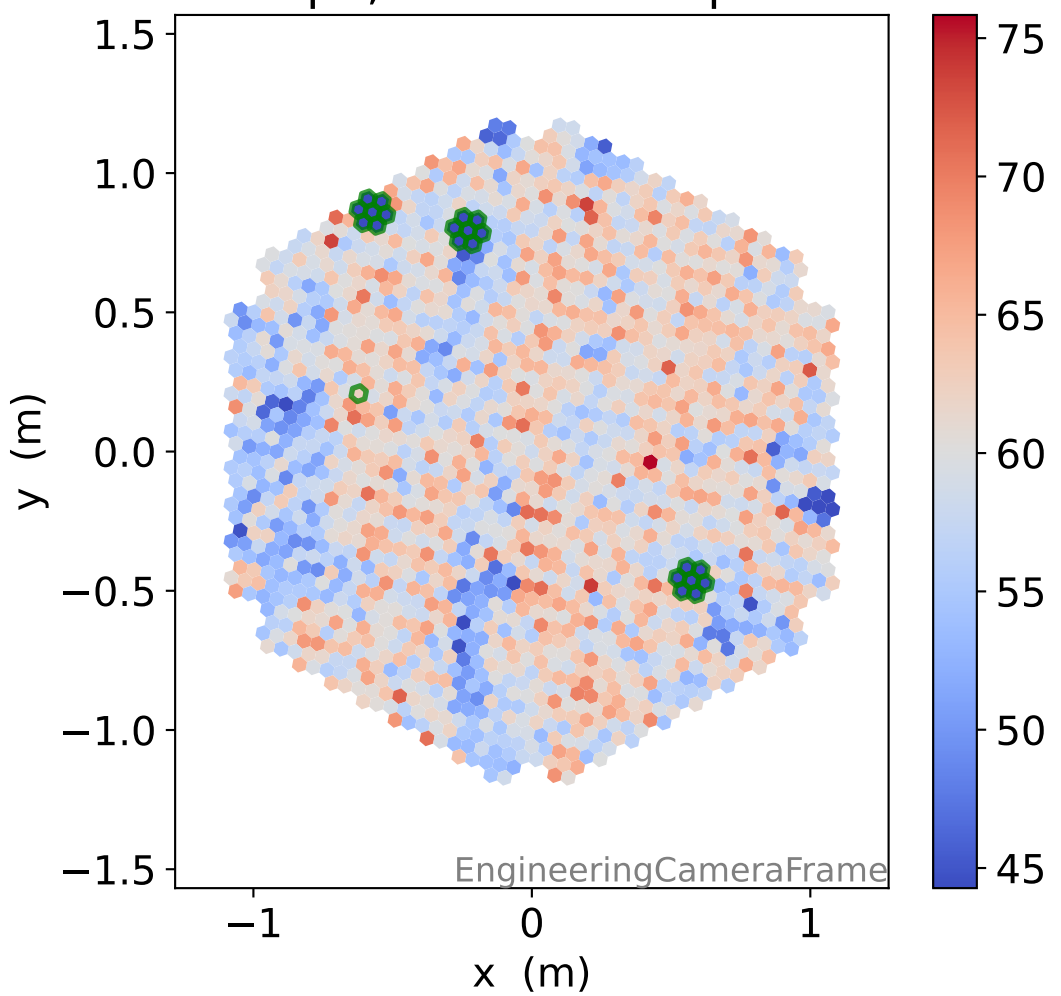
HG relative signal



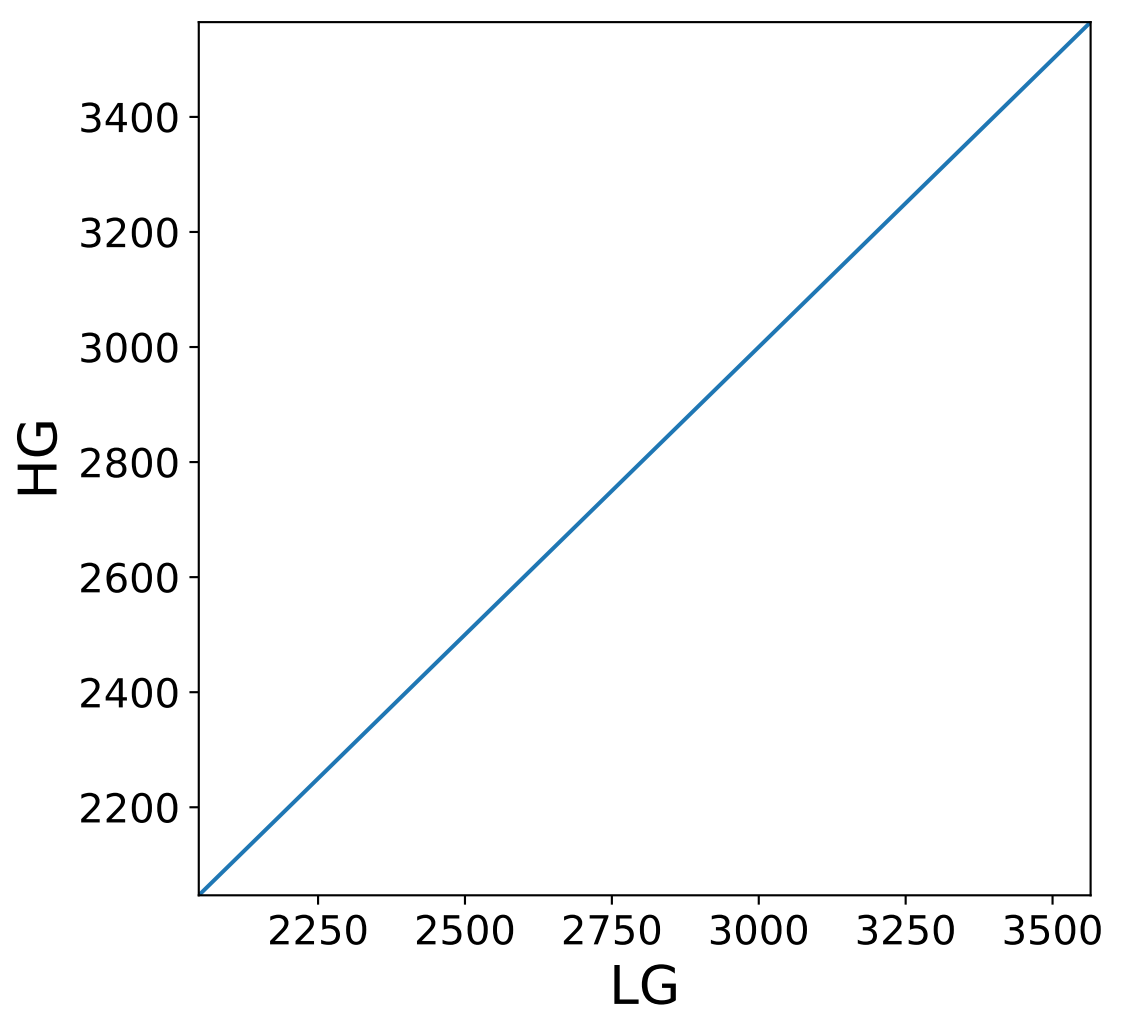
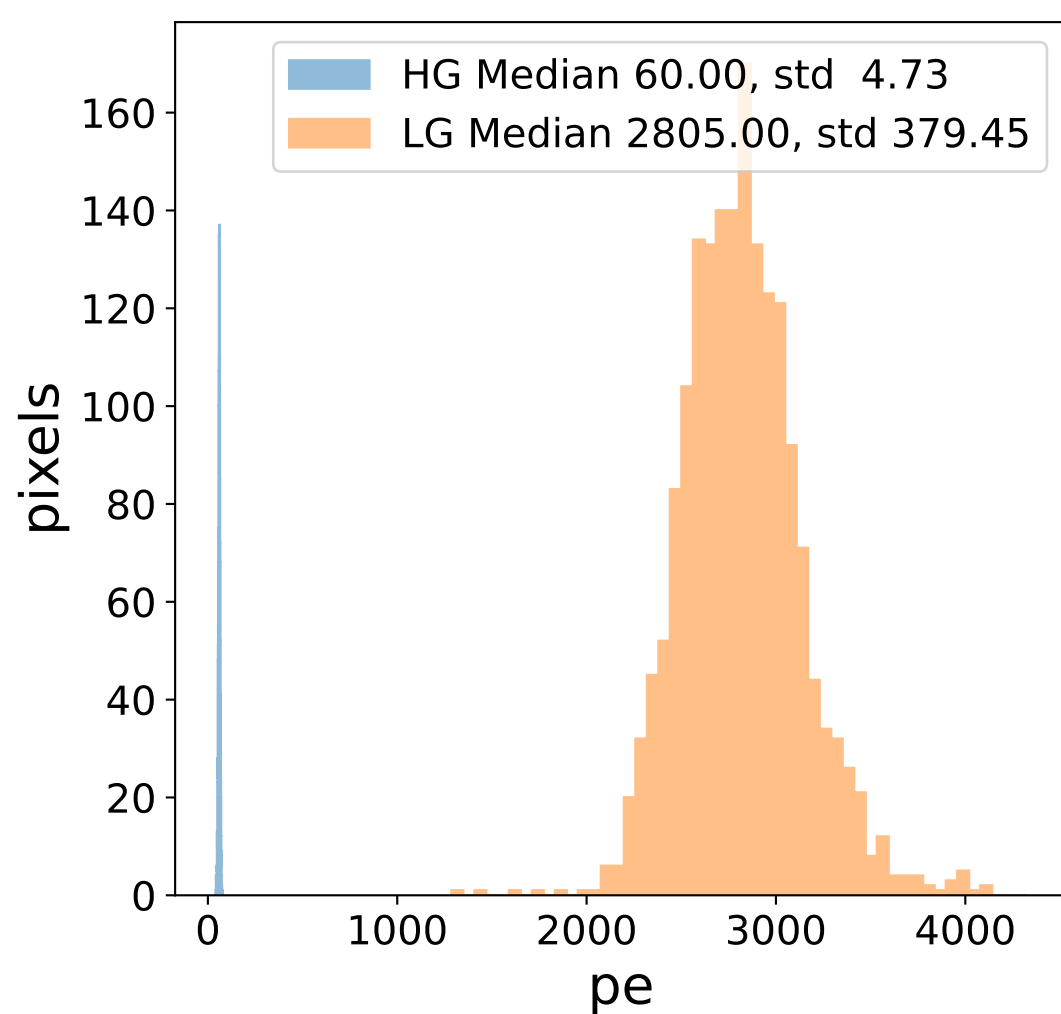
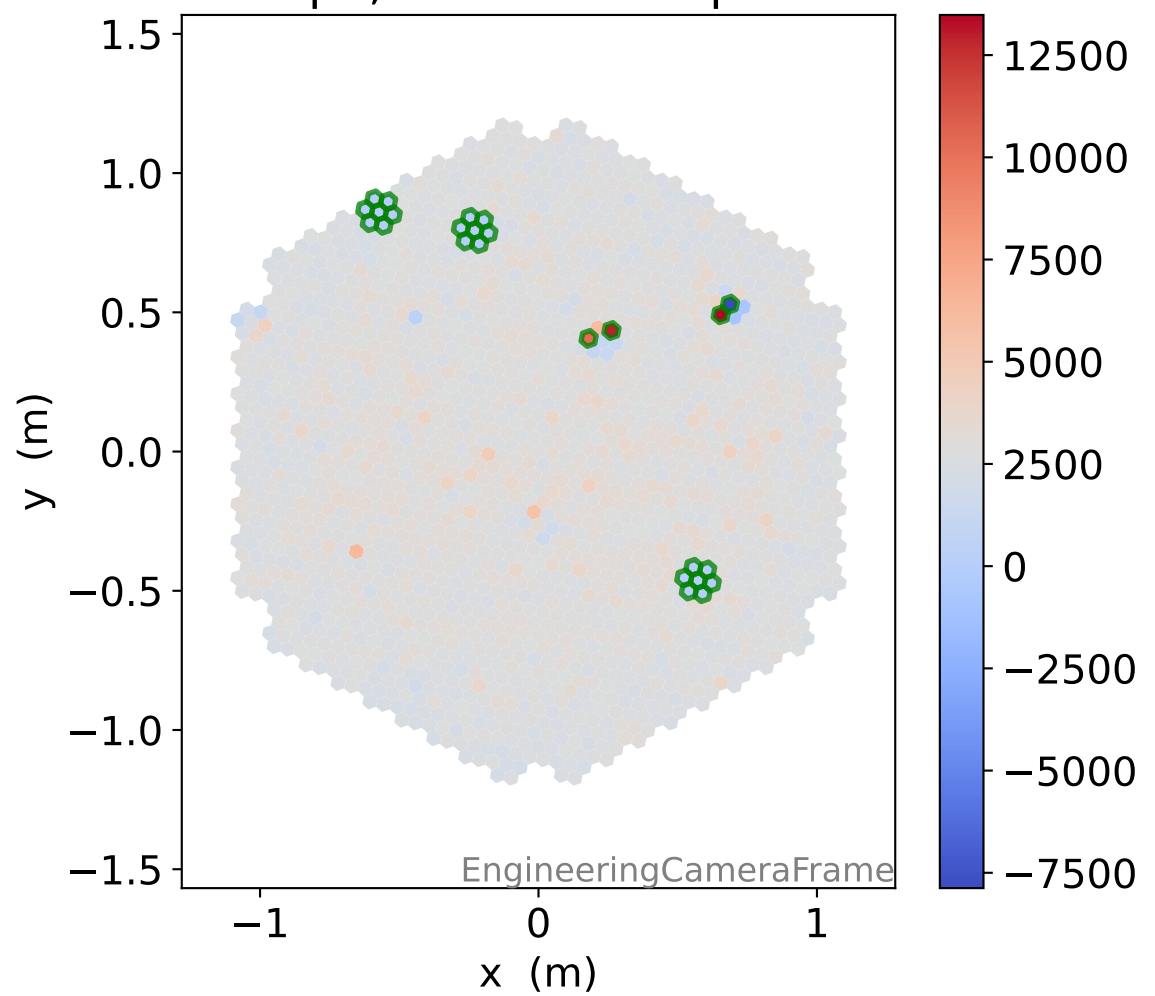
LG relative signal



HG pe, 22 unusable pixels

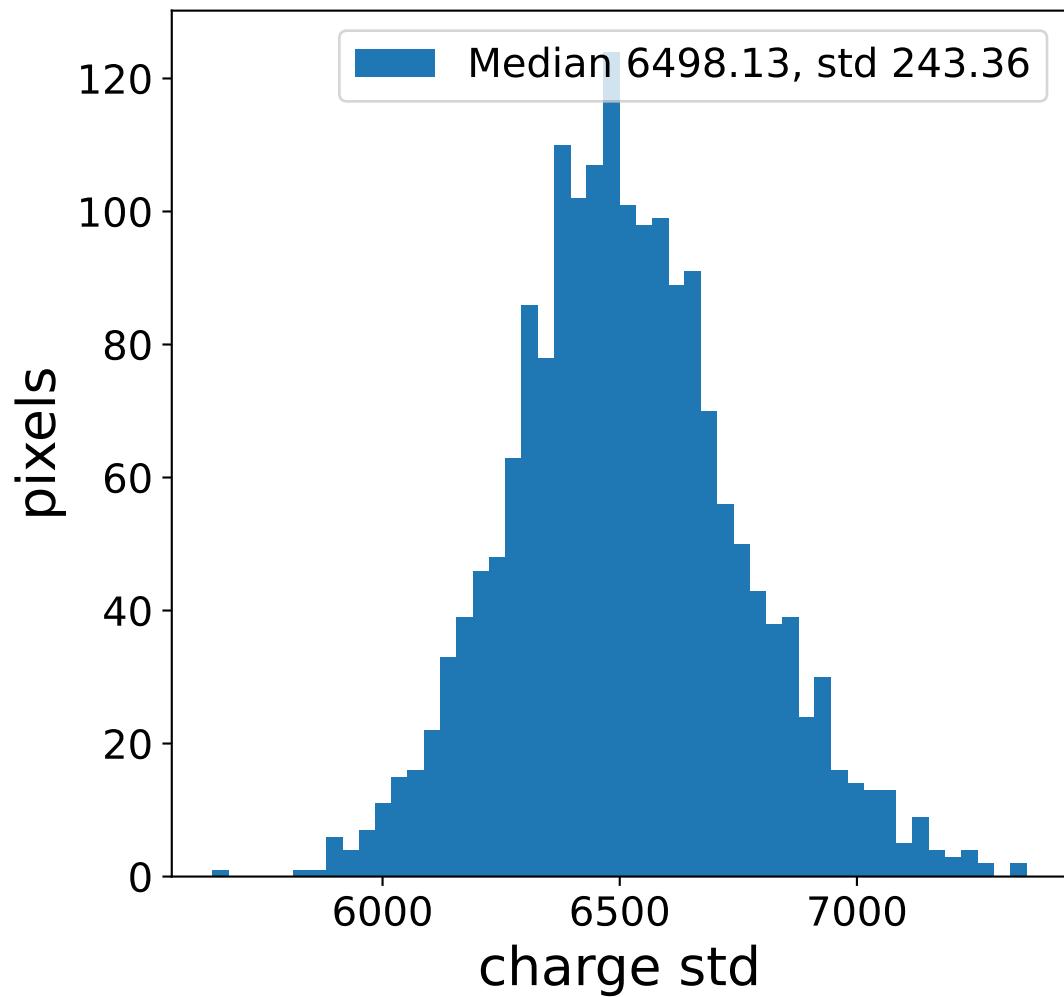
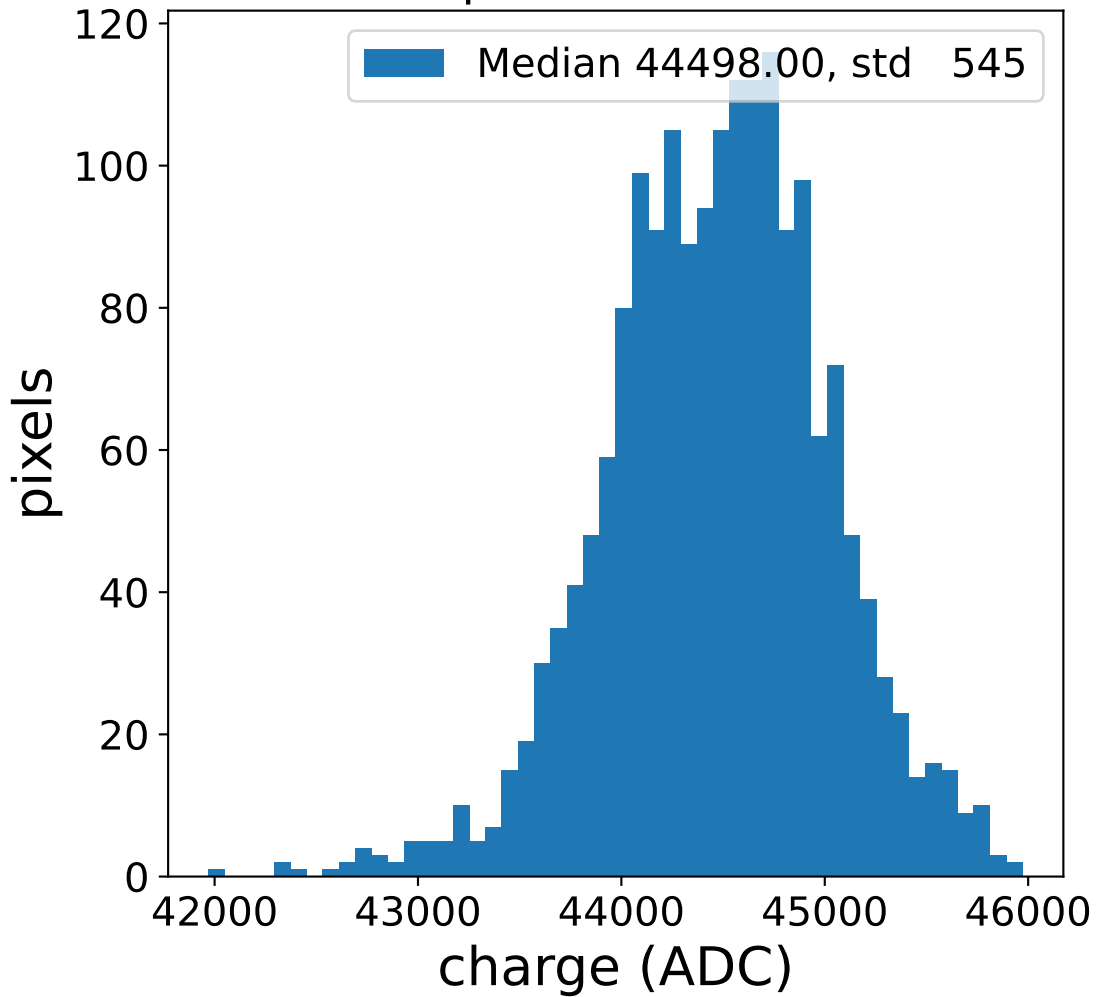


LG pe, 25 unusable pixels

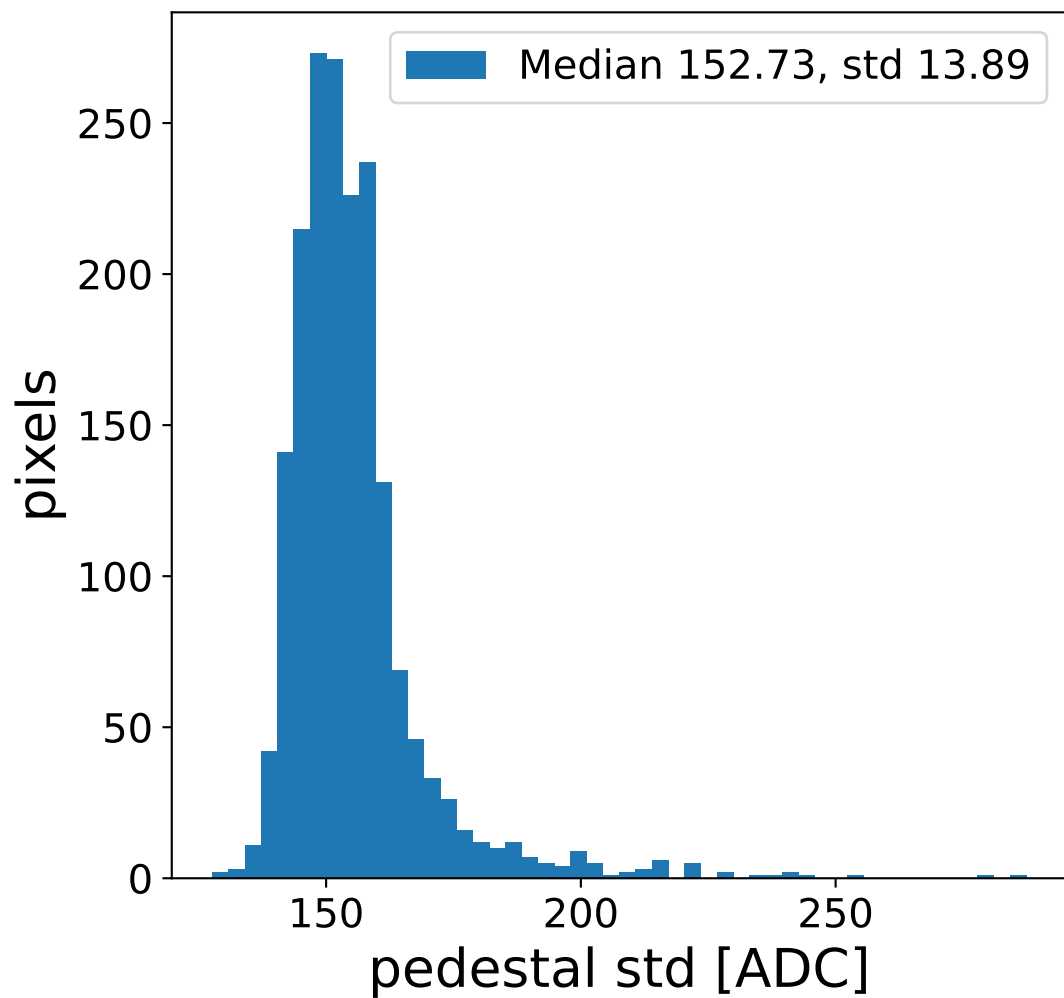
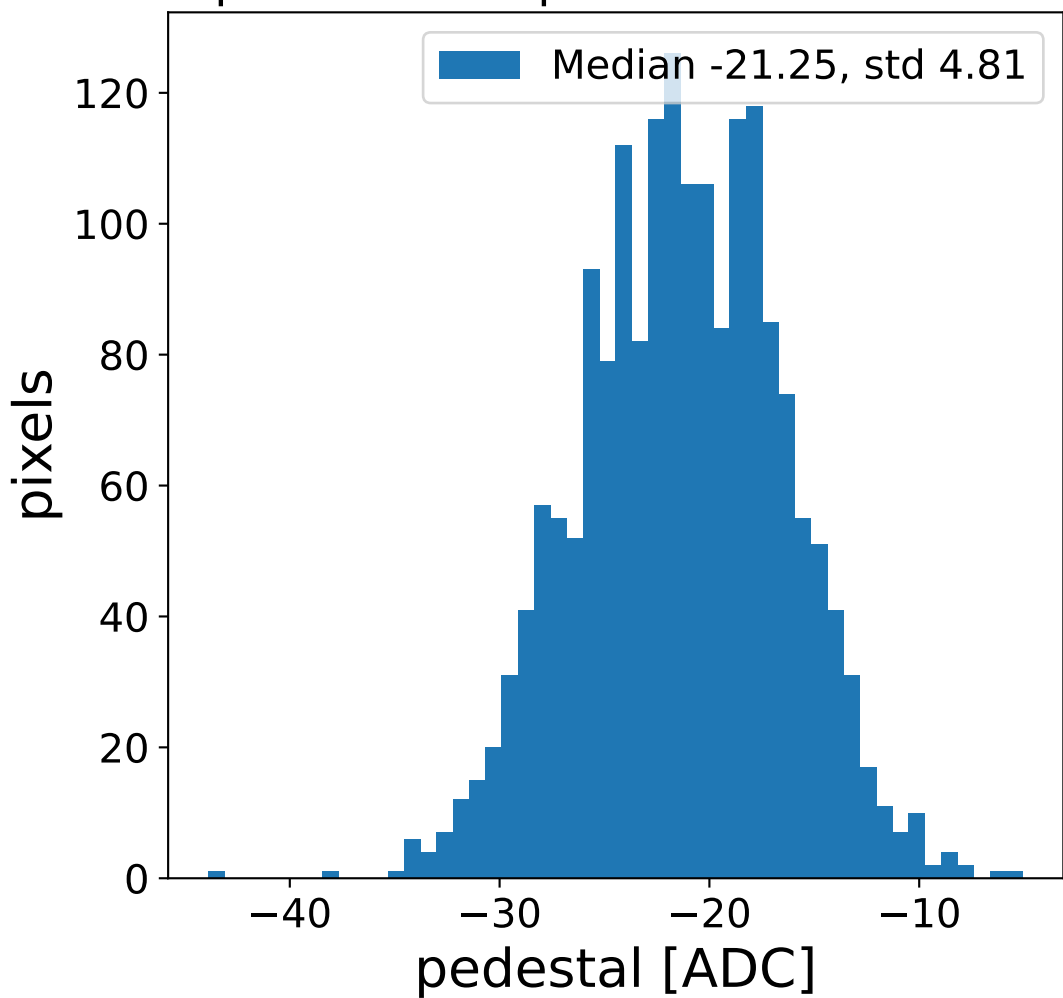


Run 19170 channel: HG

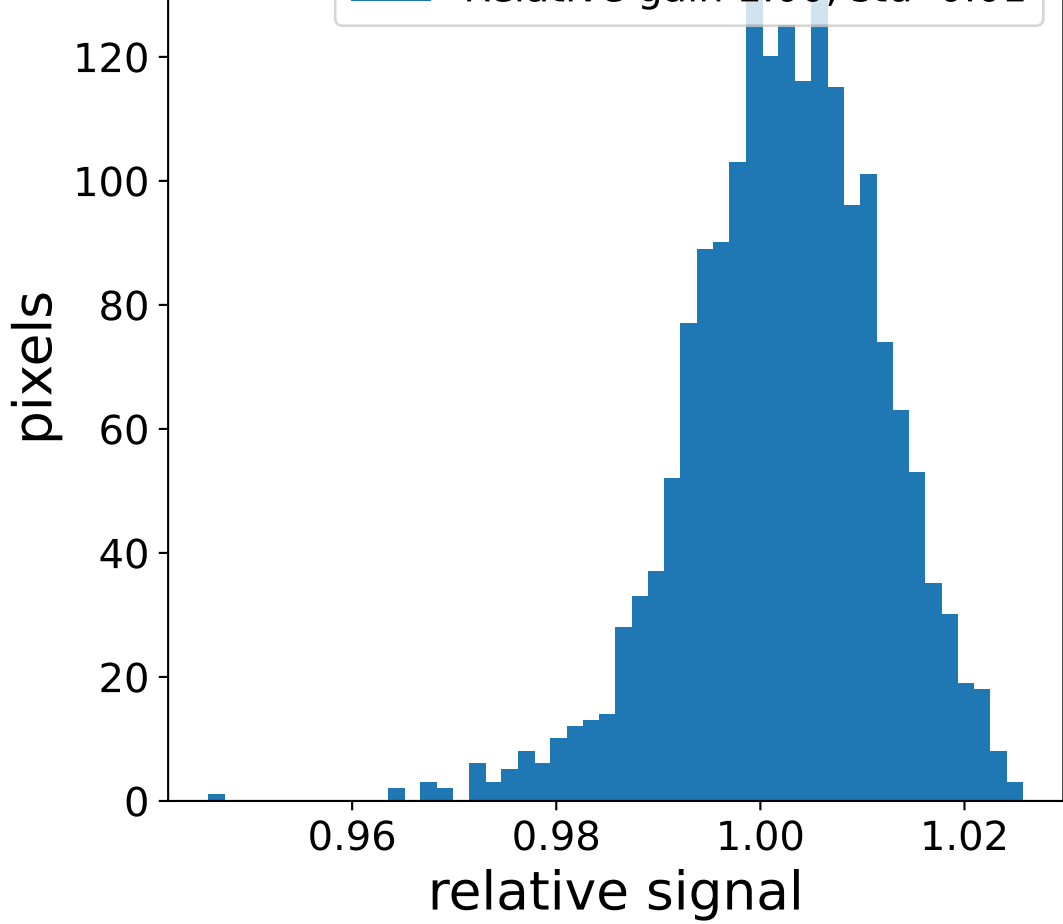
FF sample of 10000 events



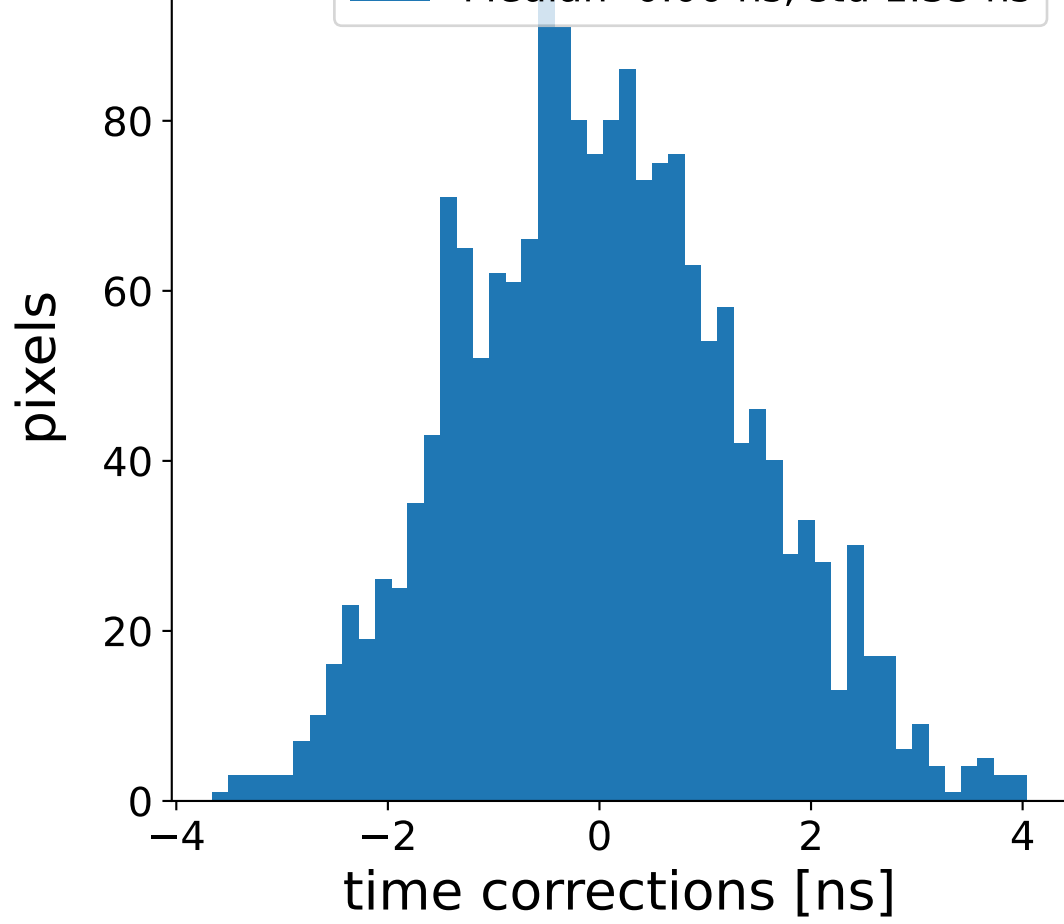
pedestal sample of 10000 events



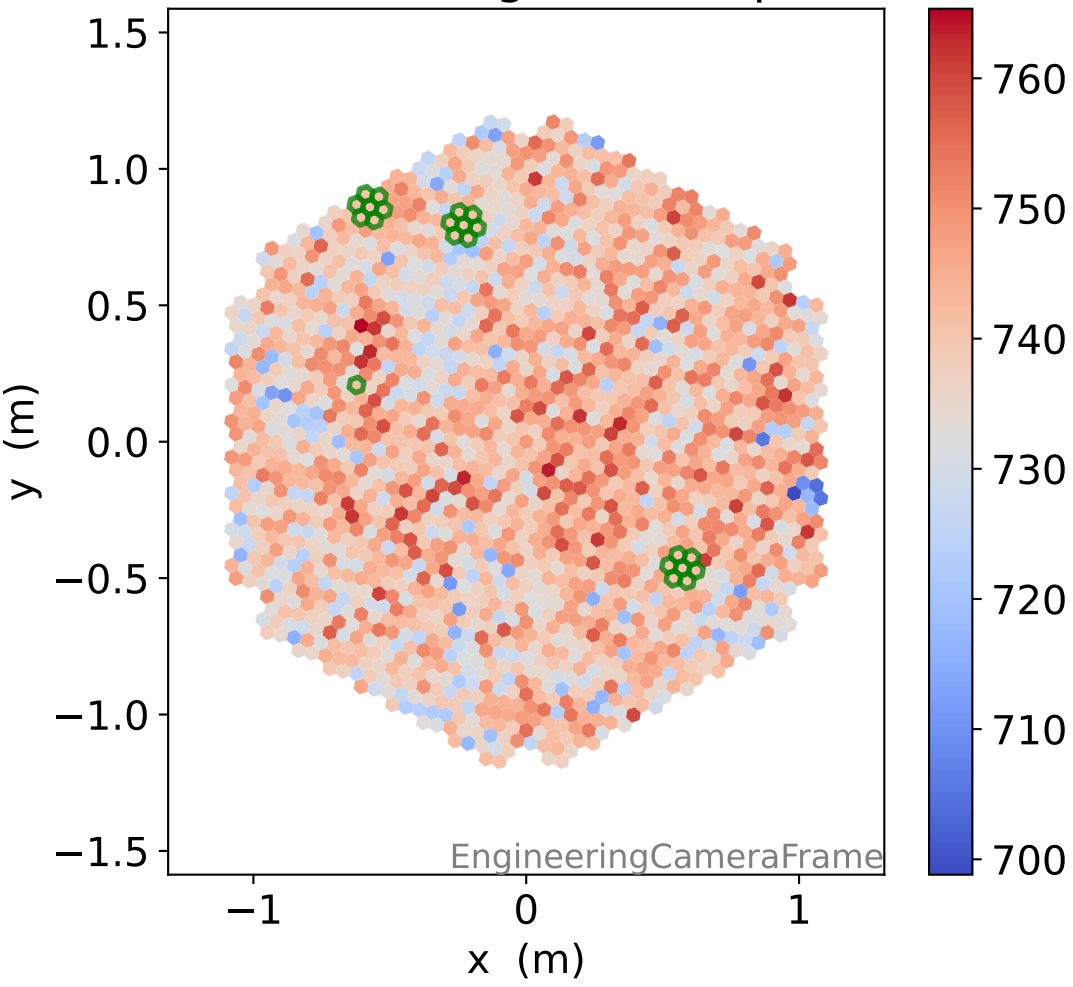
Relative gain 1.00, std 0.01



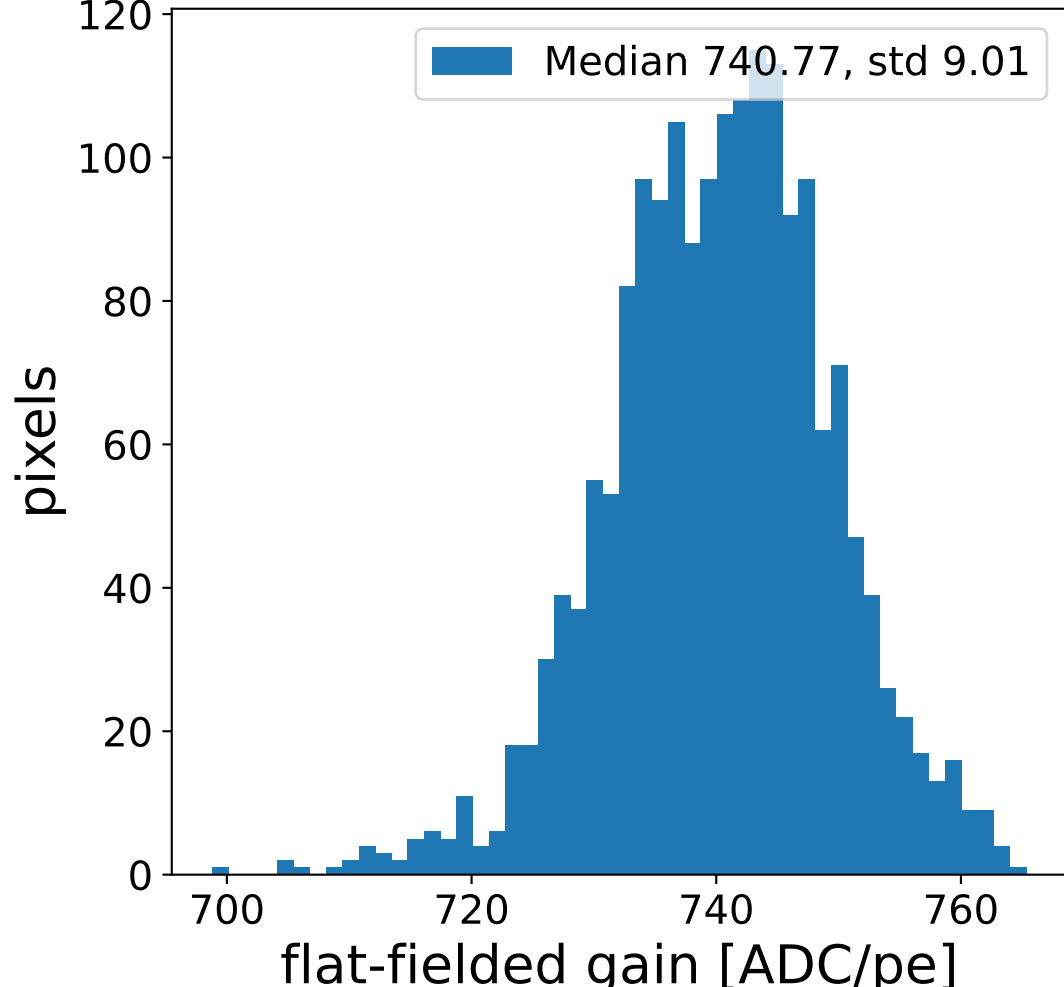
Median -0.00 ns, std 1.33 ns



flat-fielded gain [ADC/pe]

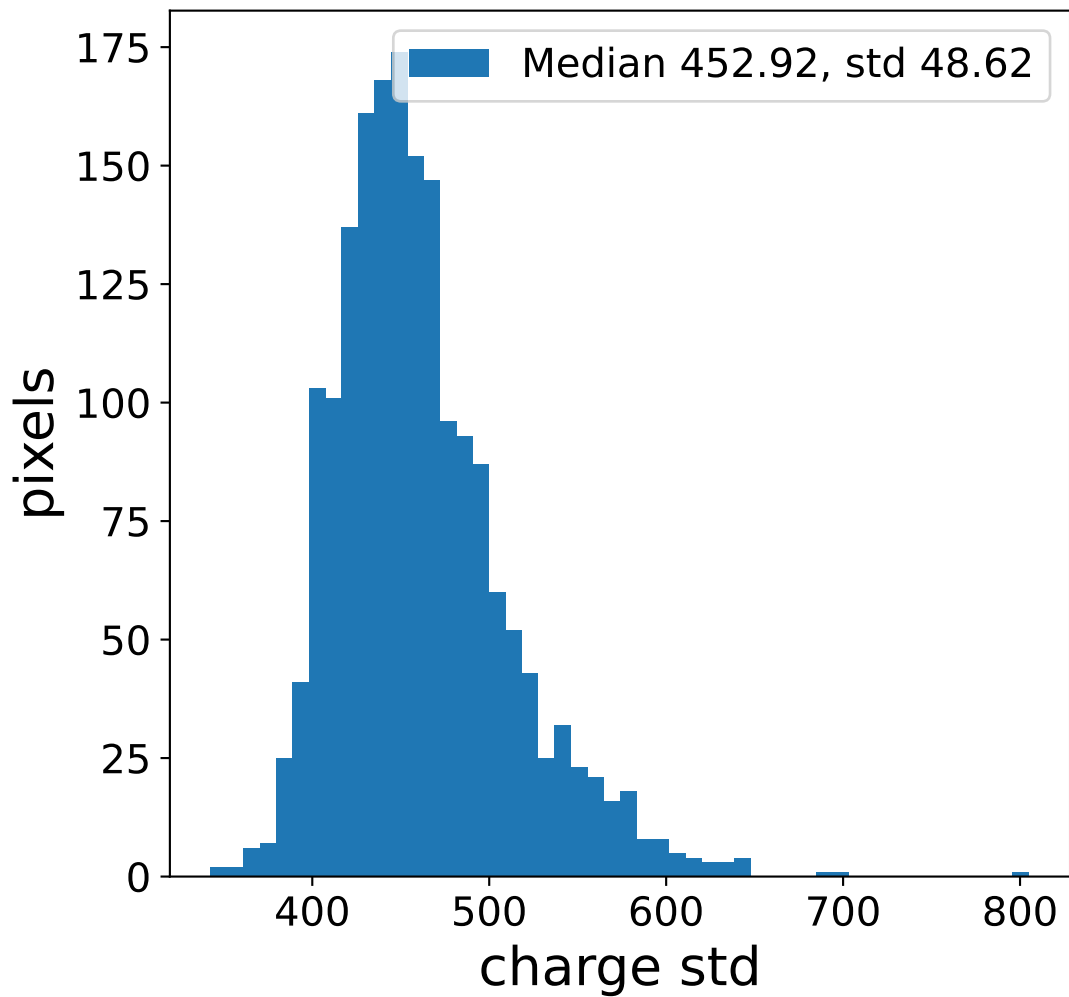
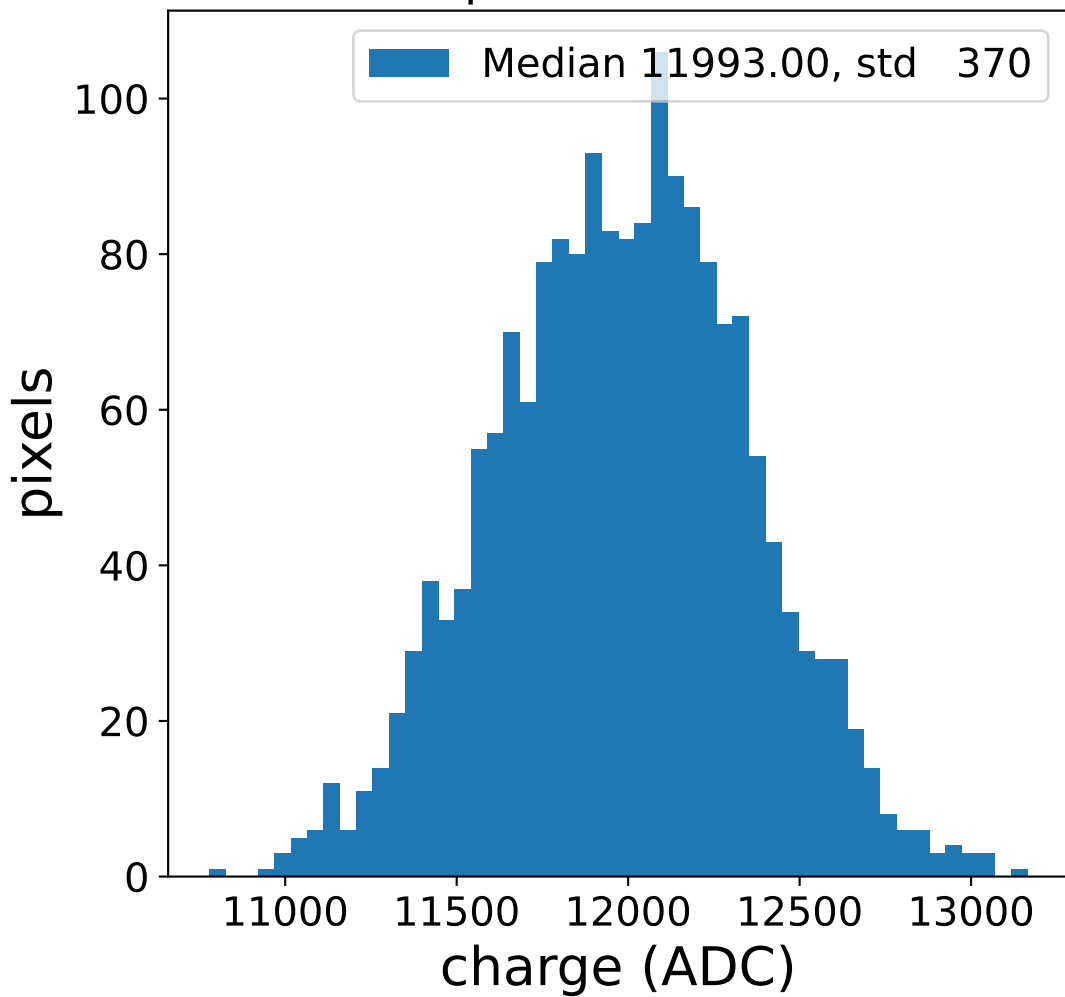


Median 740.77, std 9.01

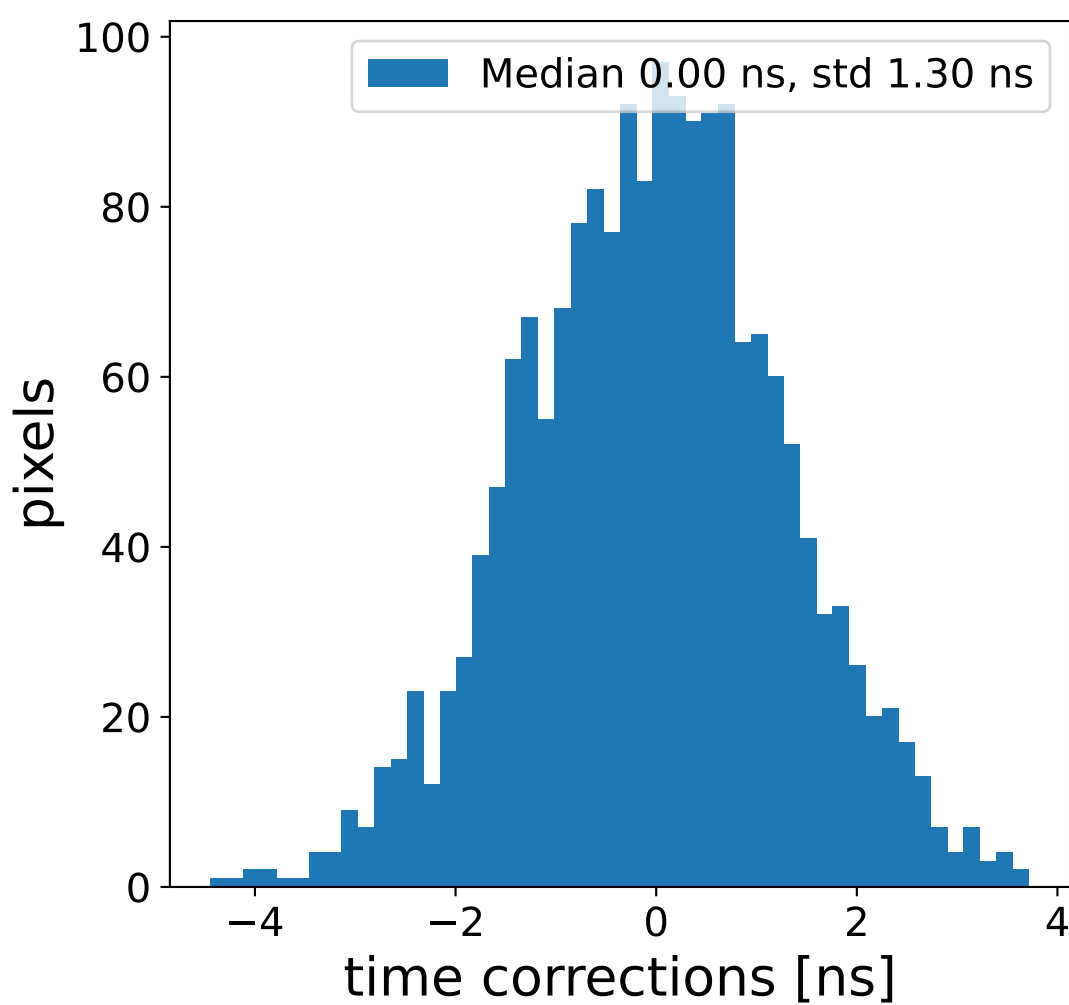
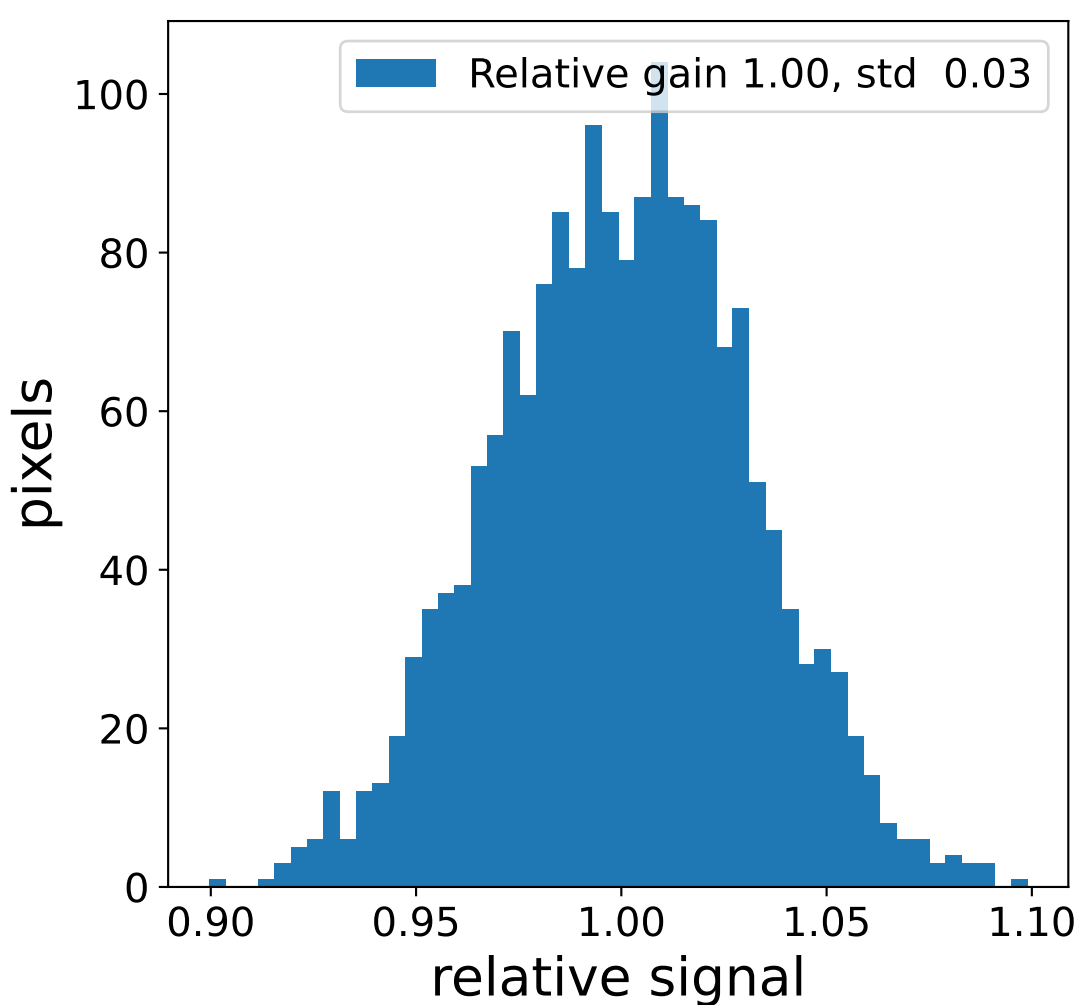
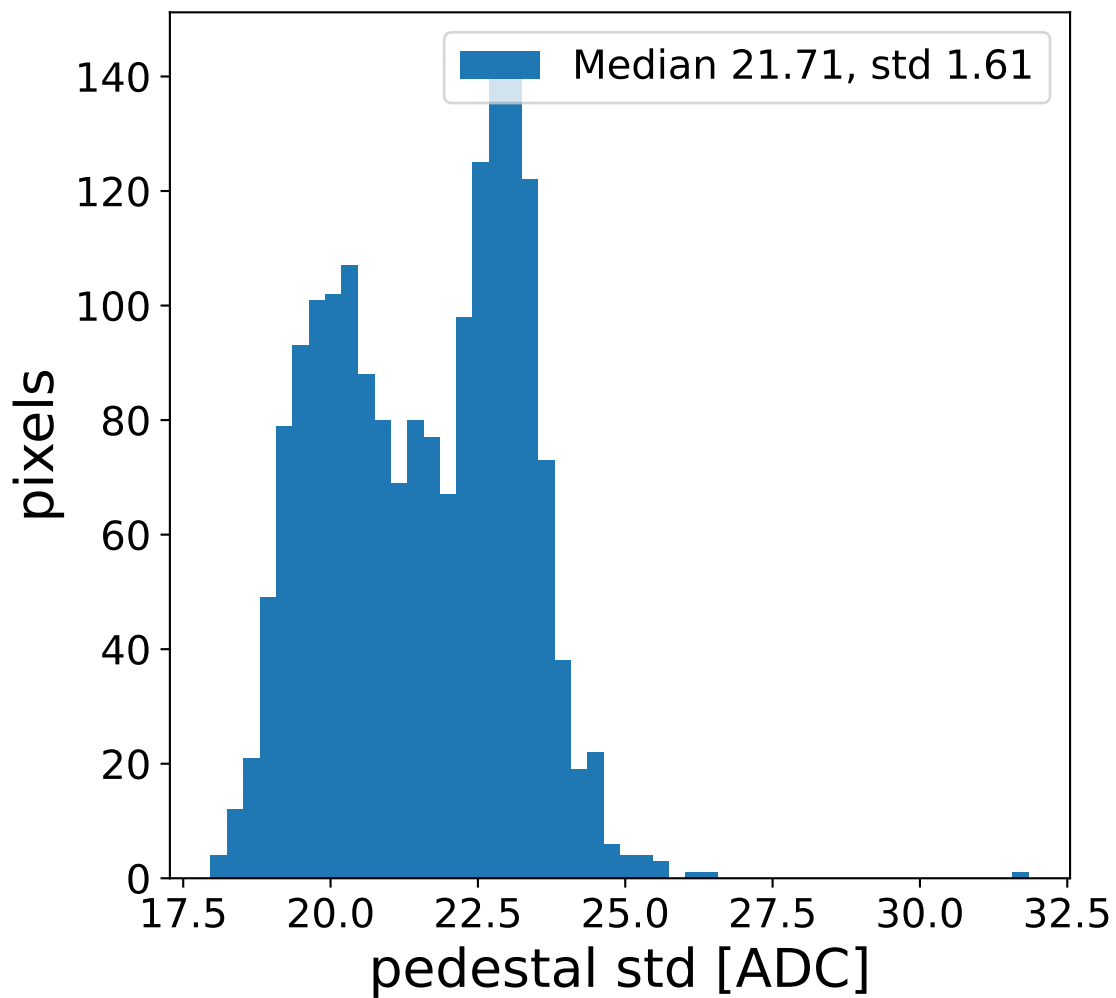
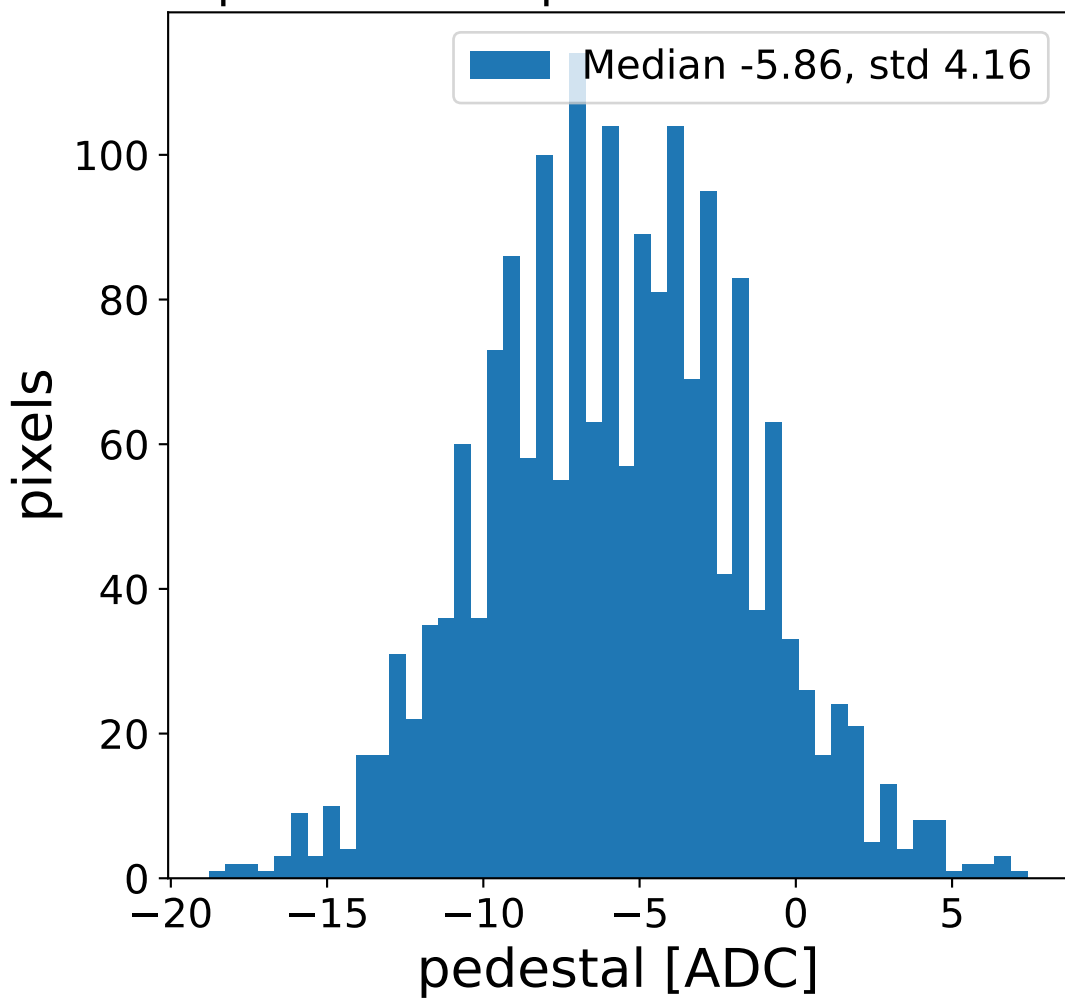


Run 19170 channel: LG

FF sample of 10000 events



pedestal sample of 10000 events



flat-fielded gain [ADC/pe]

