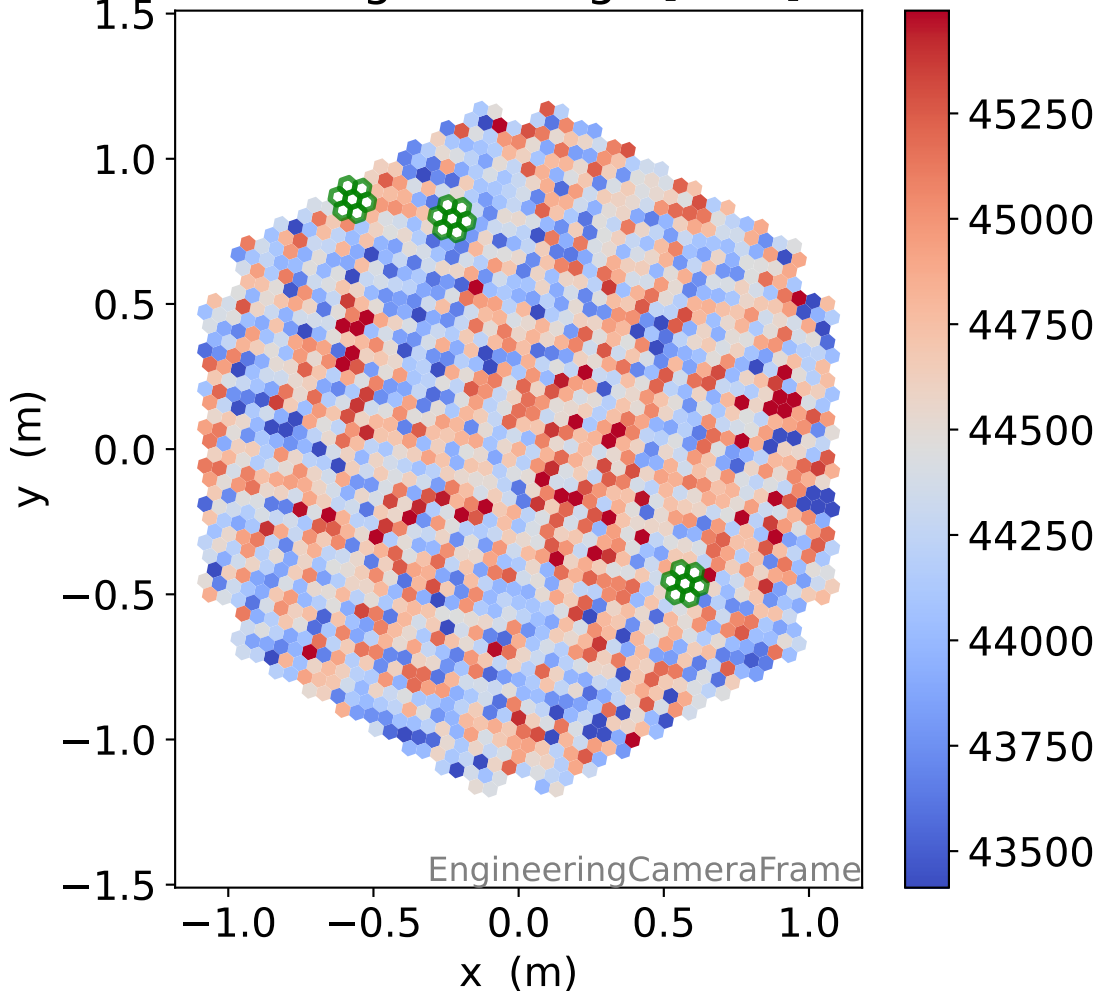
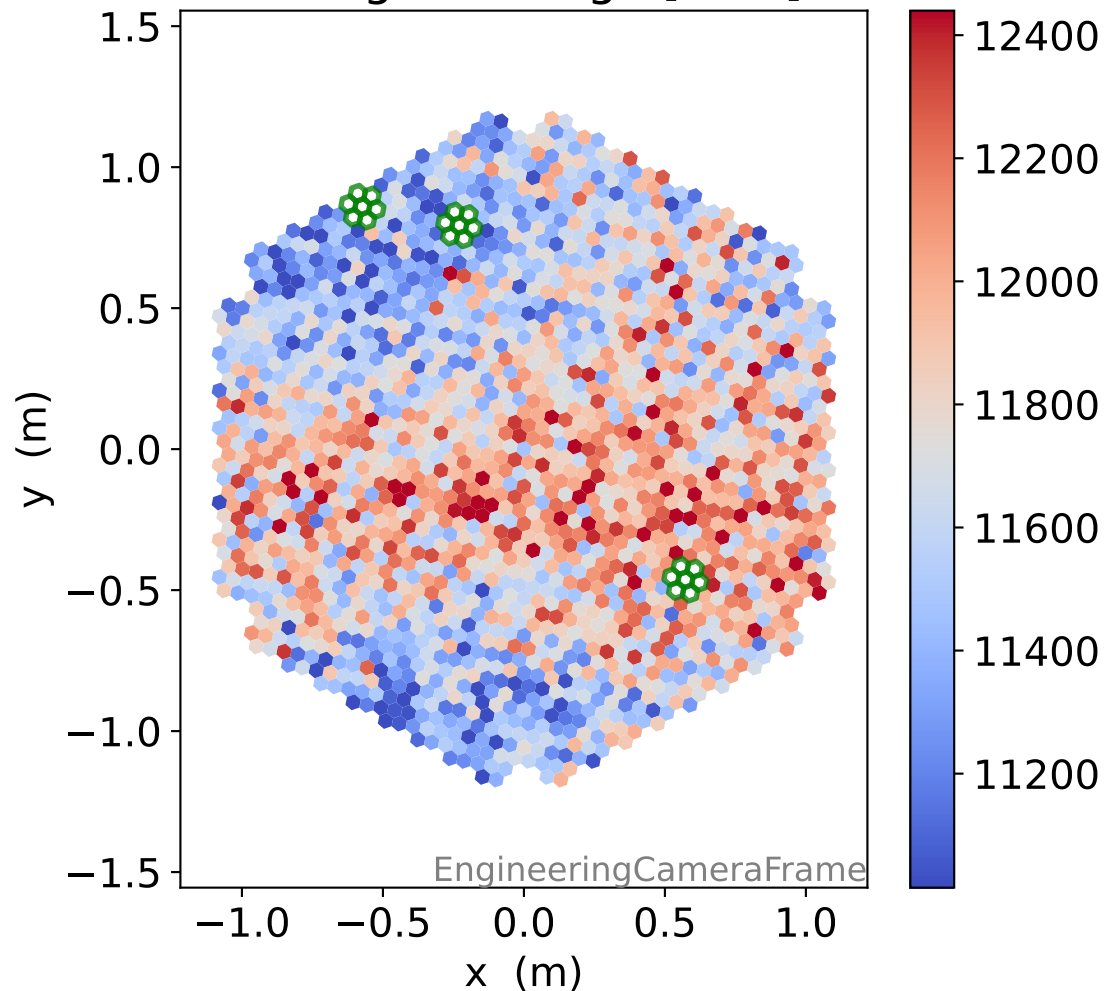


Run 19282, Cat-A calibration

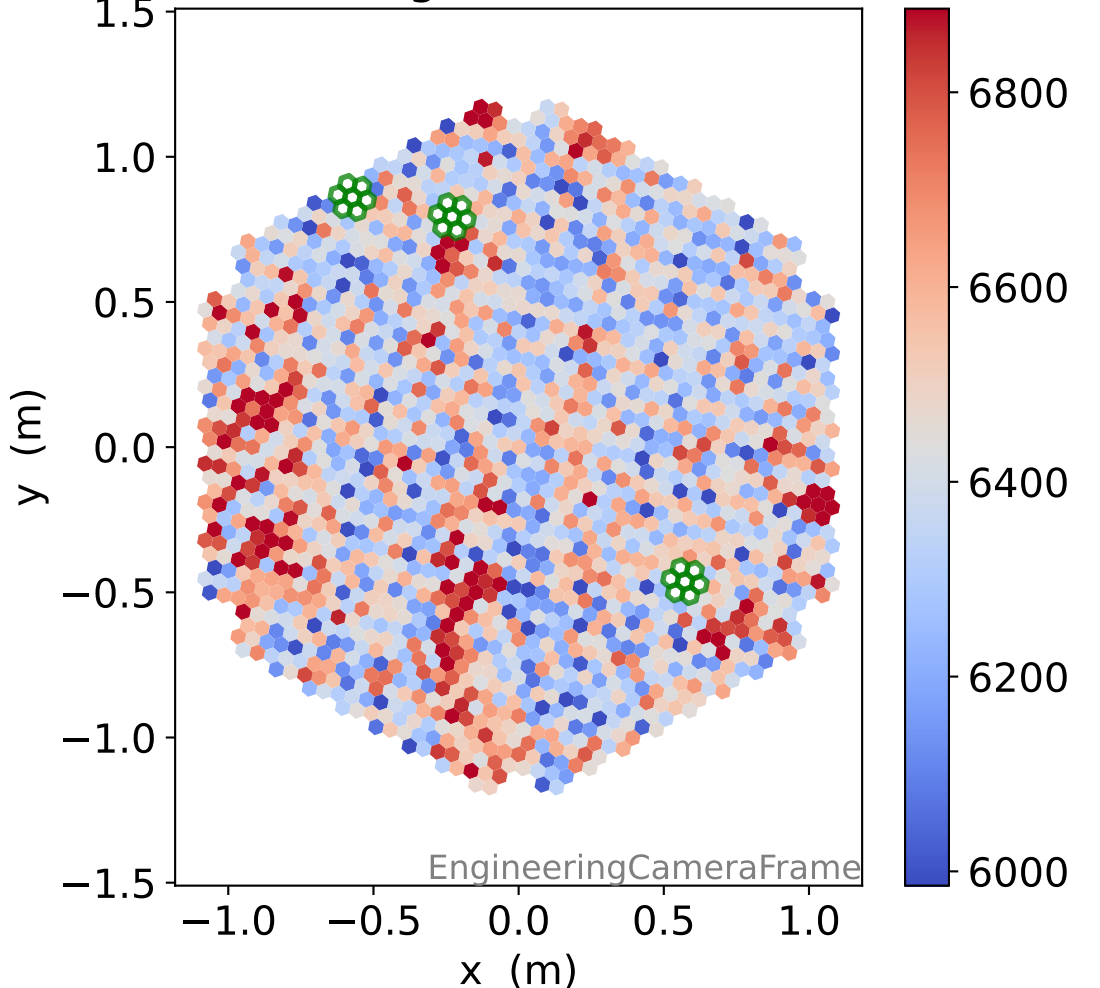
HG signal charge [ADC]



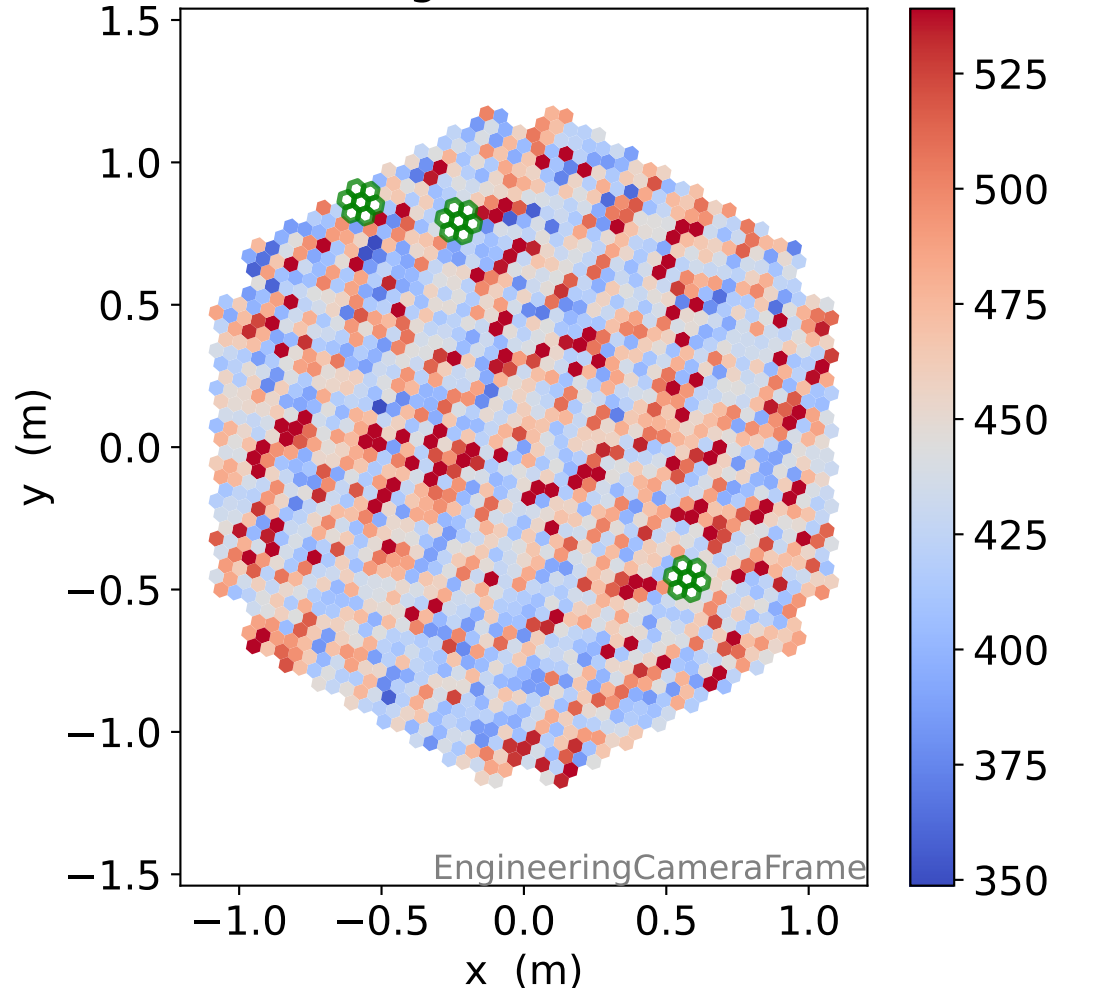
LG signal charge [ADC]



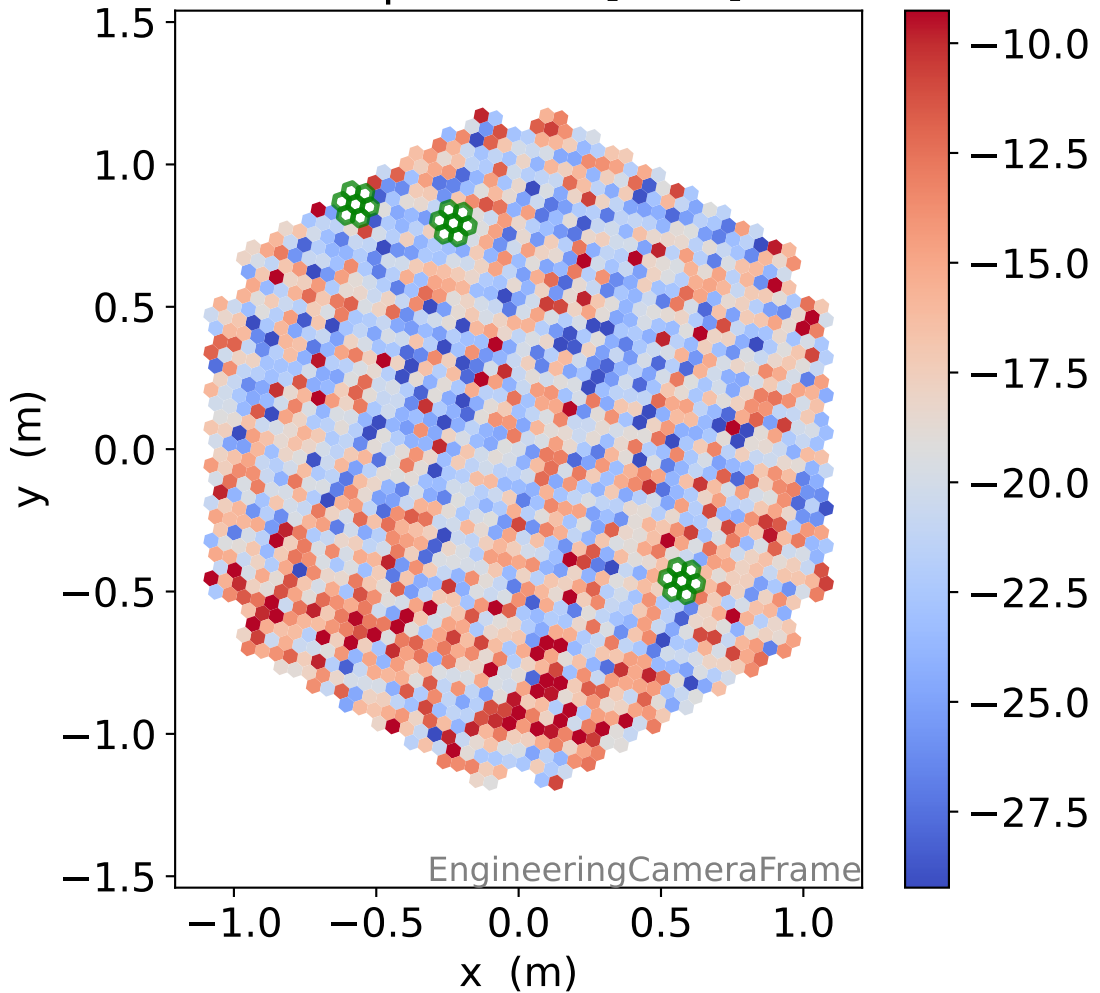
HG signal std [ADC]



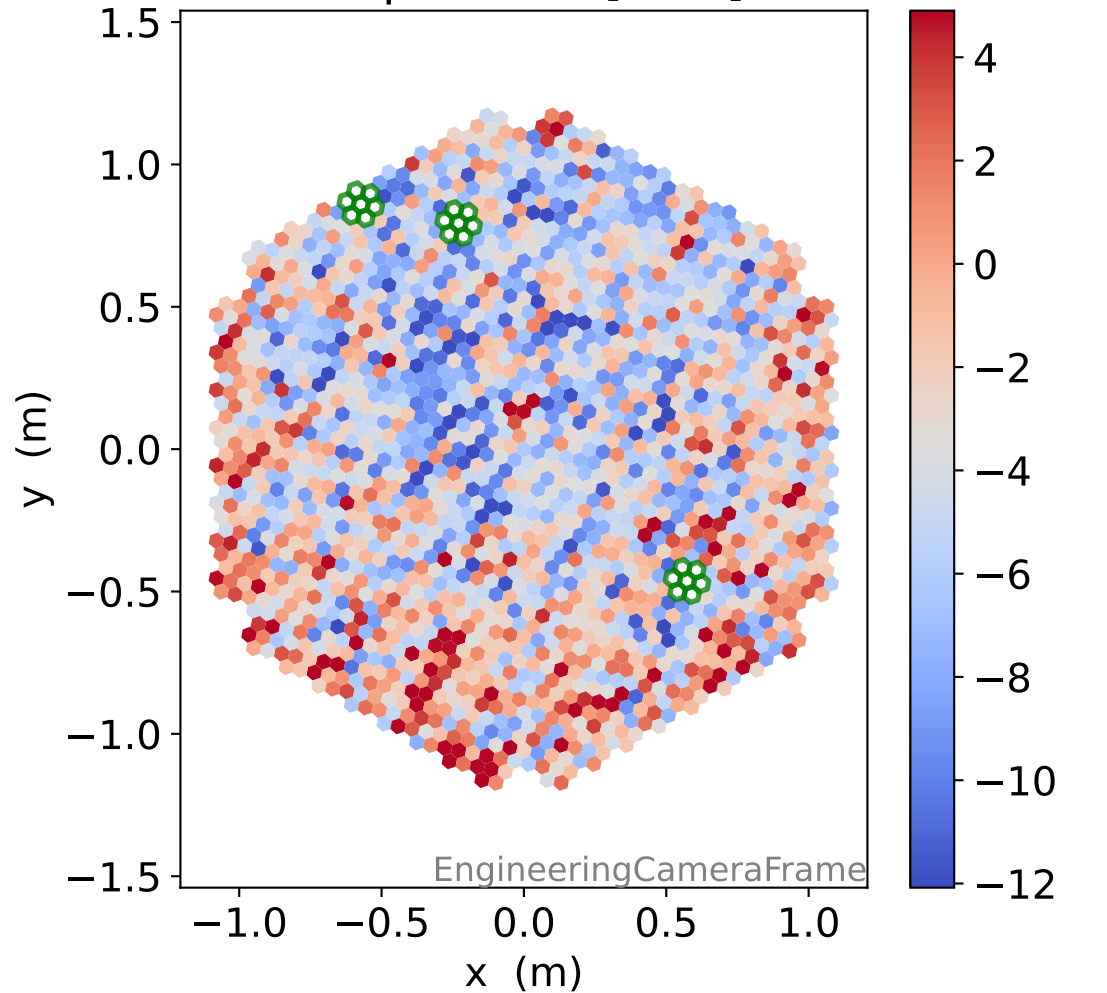
LG signal std [ADC]



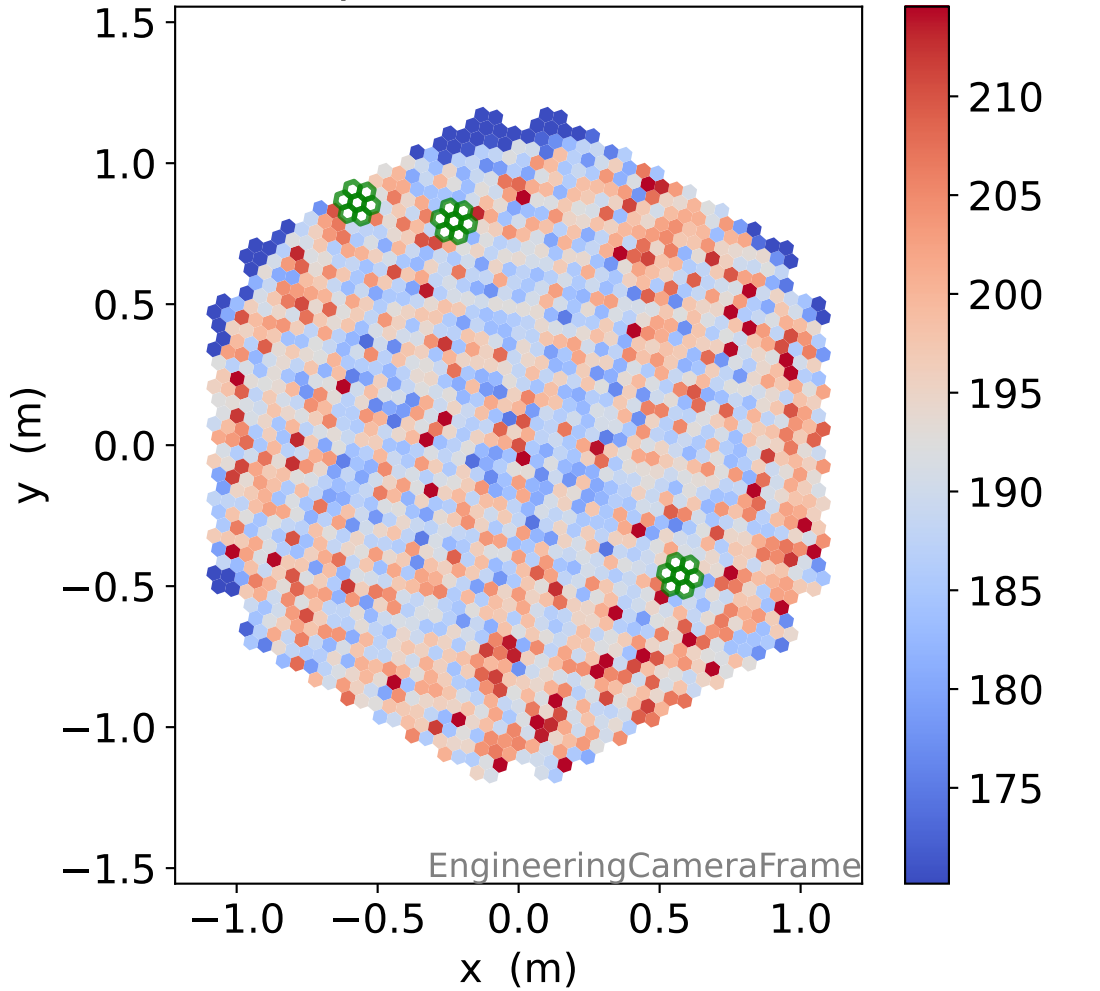
HG pedestal [ADC]



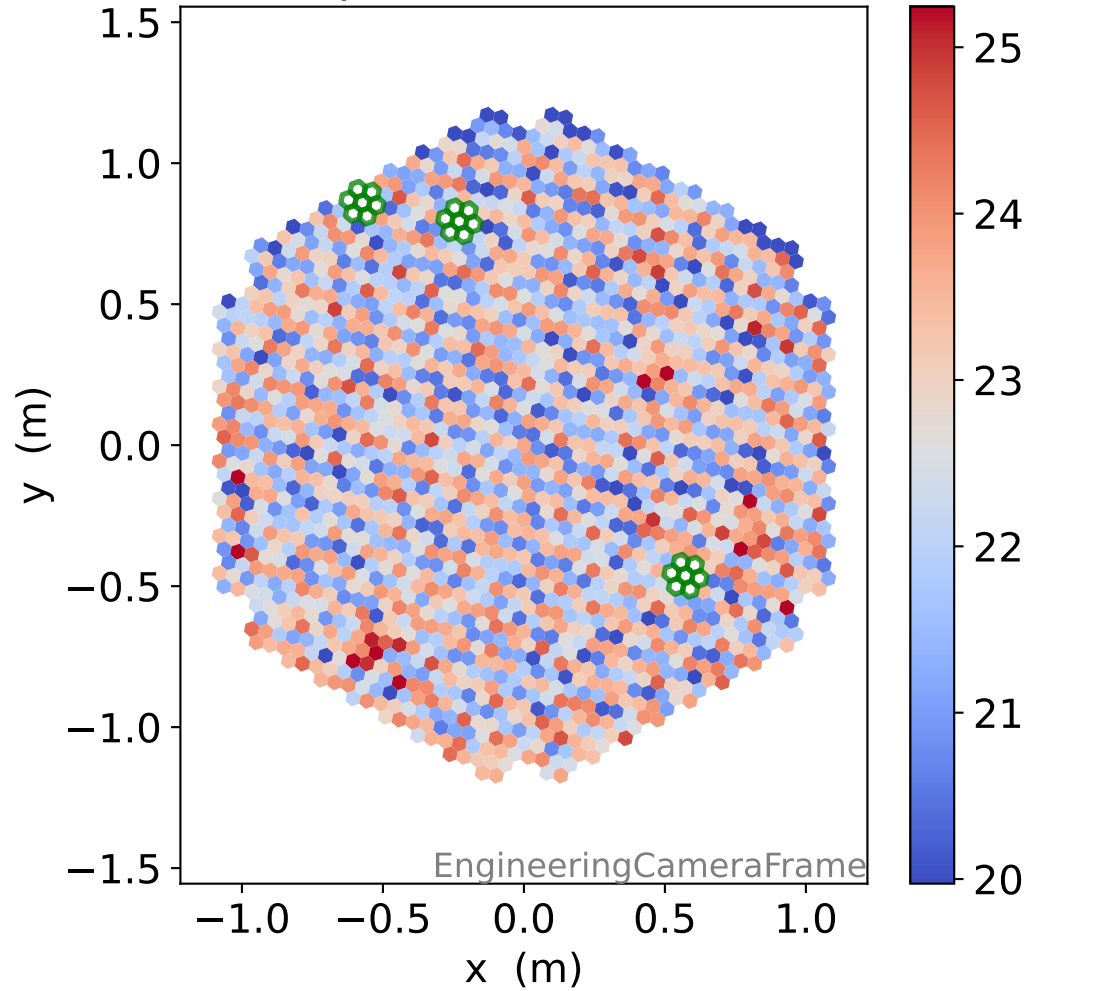
LG pedestal [ADC]



HG pedestal std [ADC]

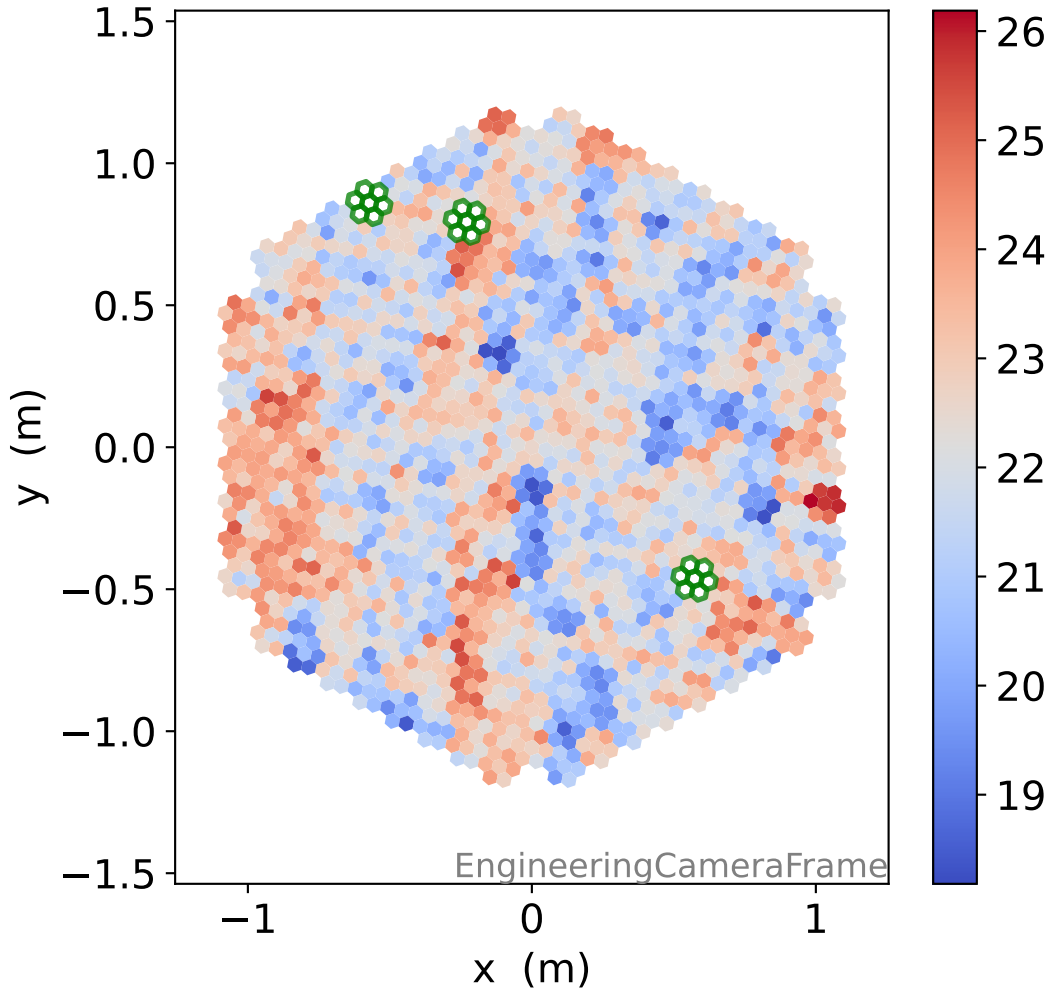


LG pedestal std [ADC]

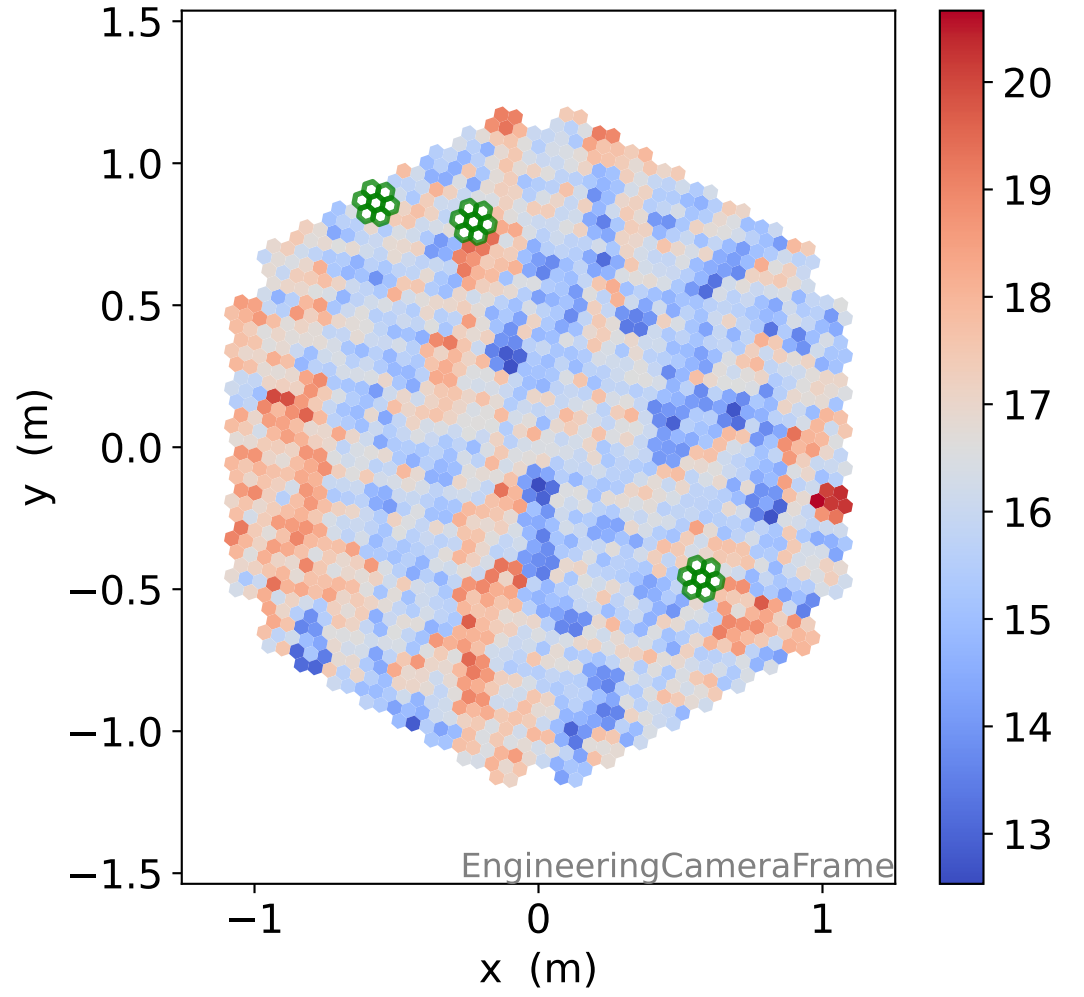


Run 19282

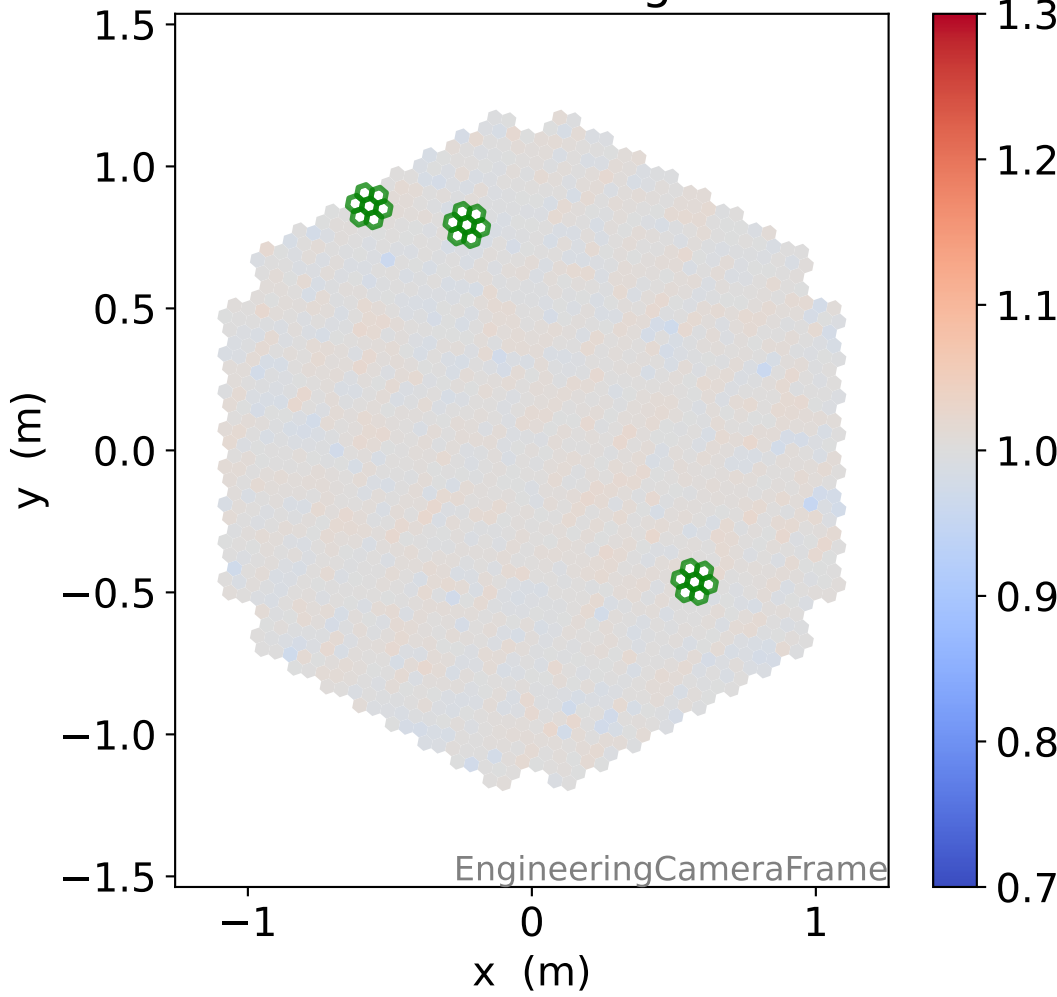
HG time



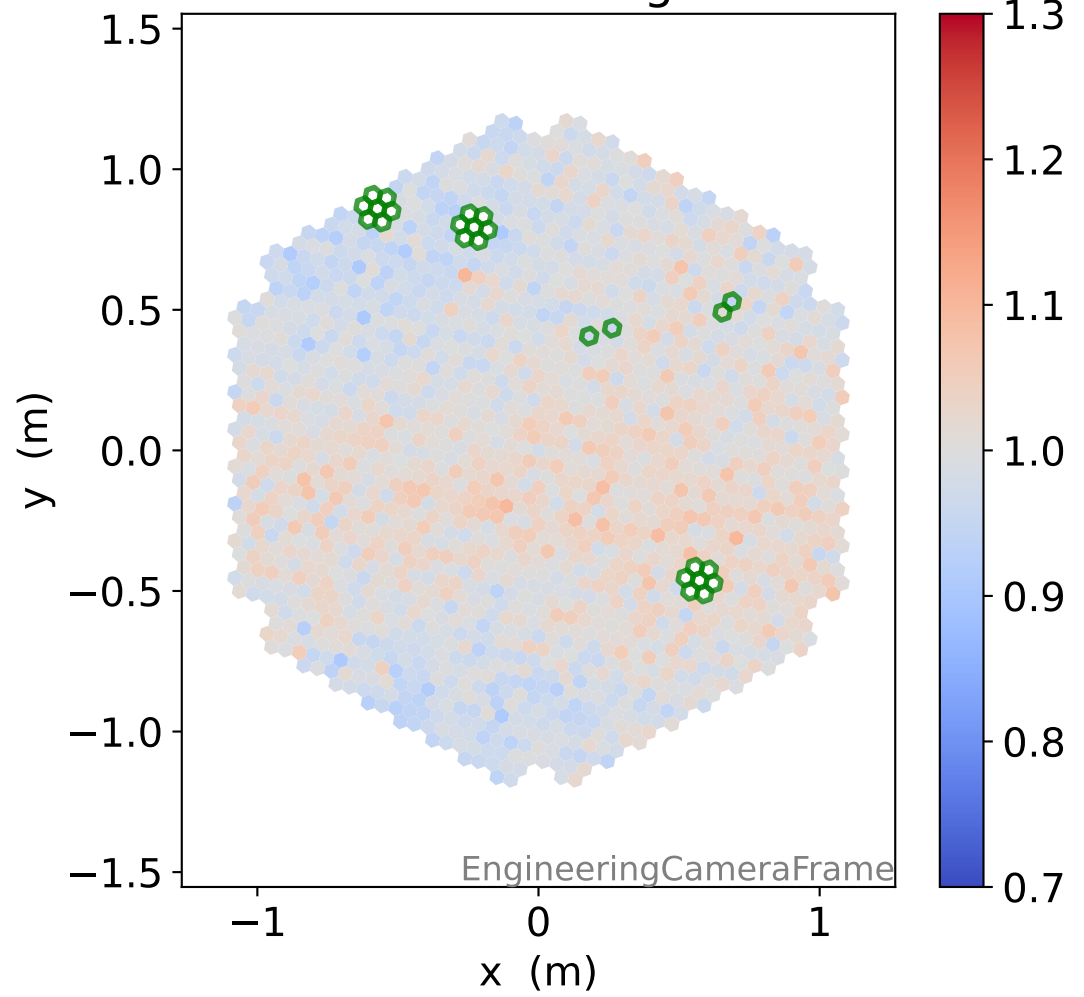
LG time



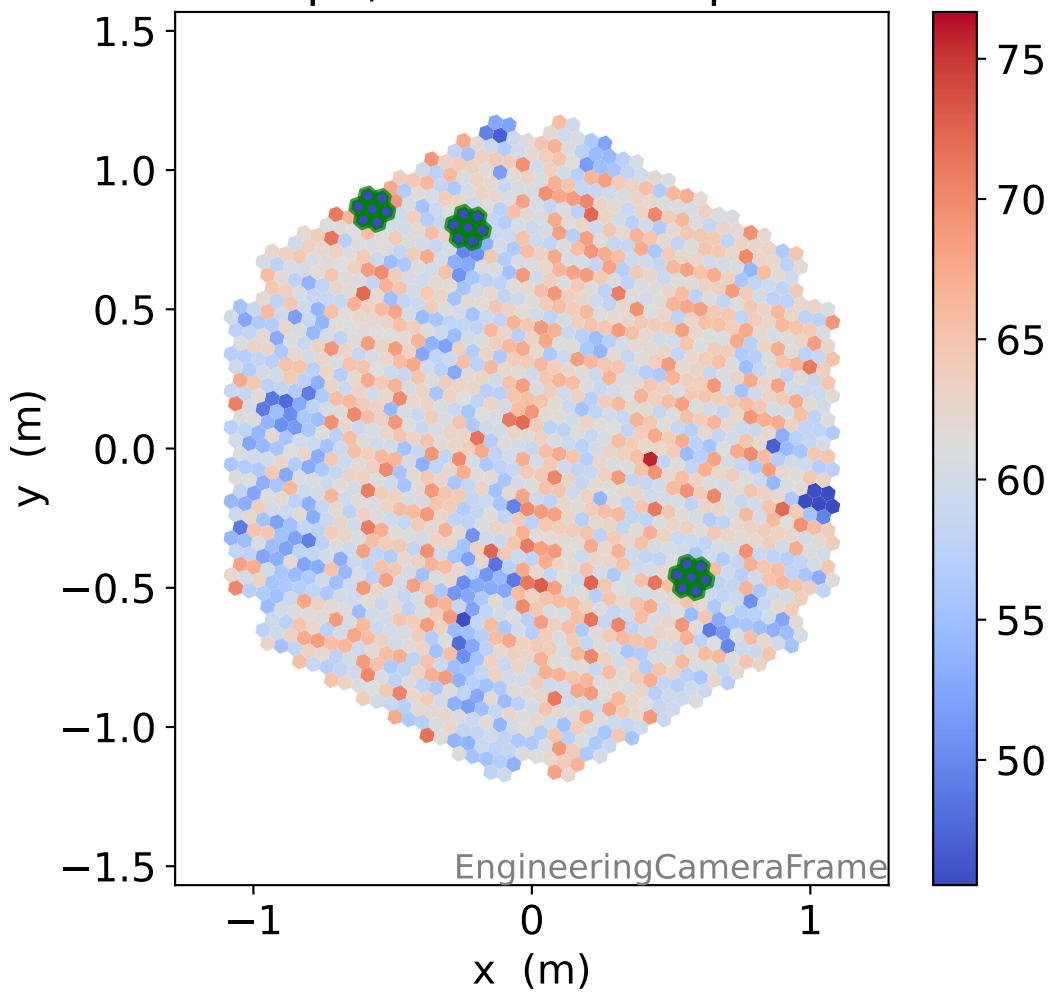
HG relative signal



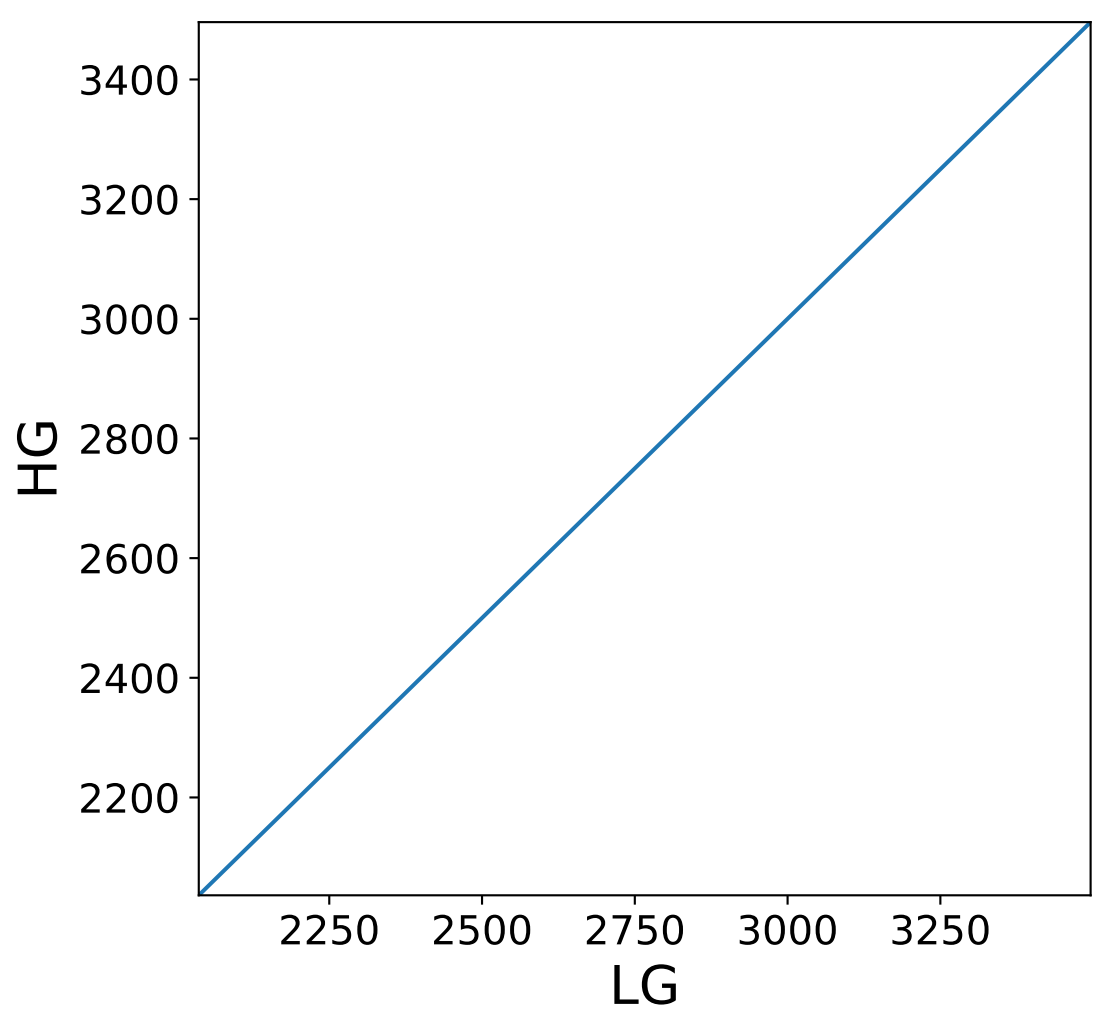
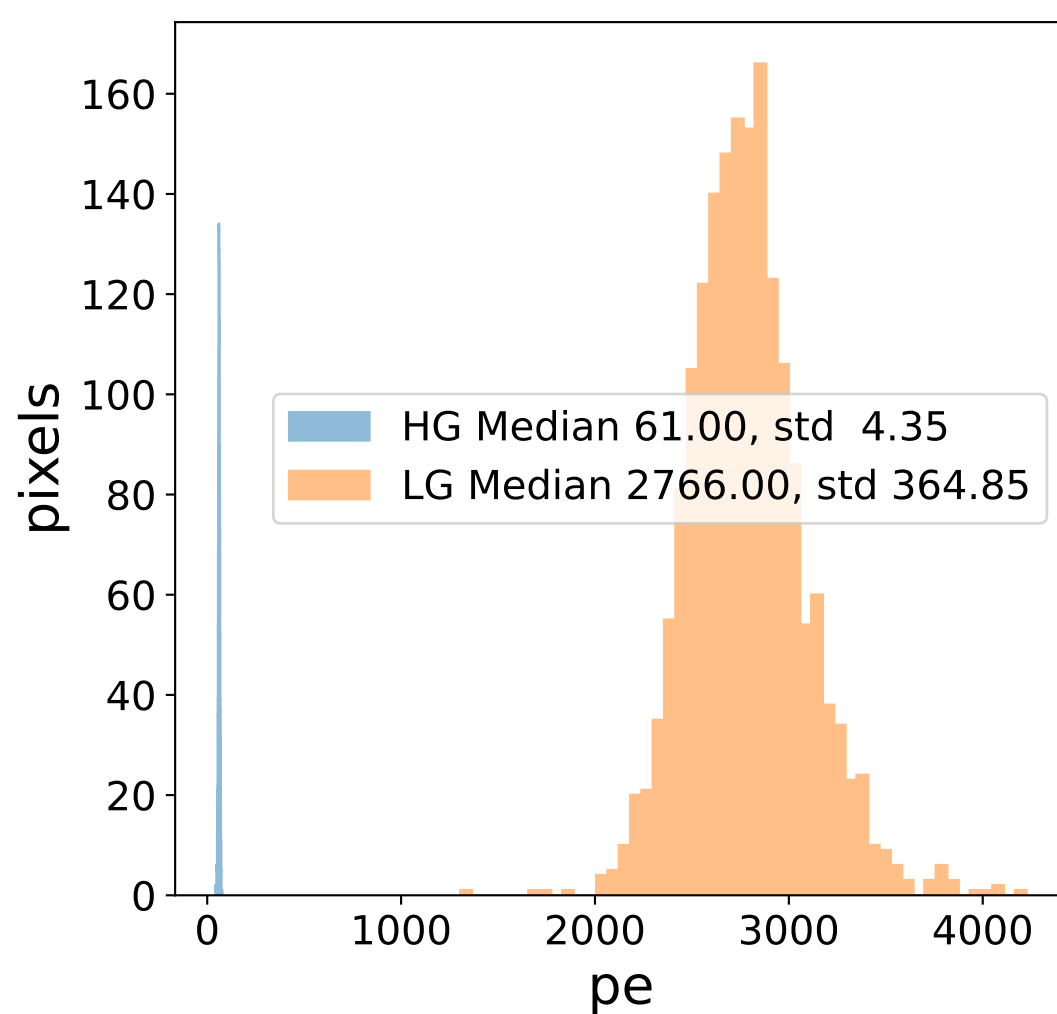
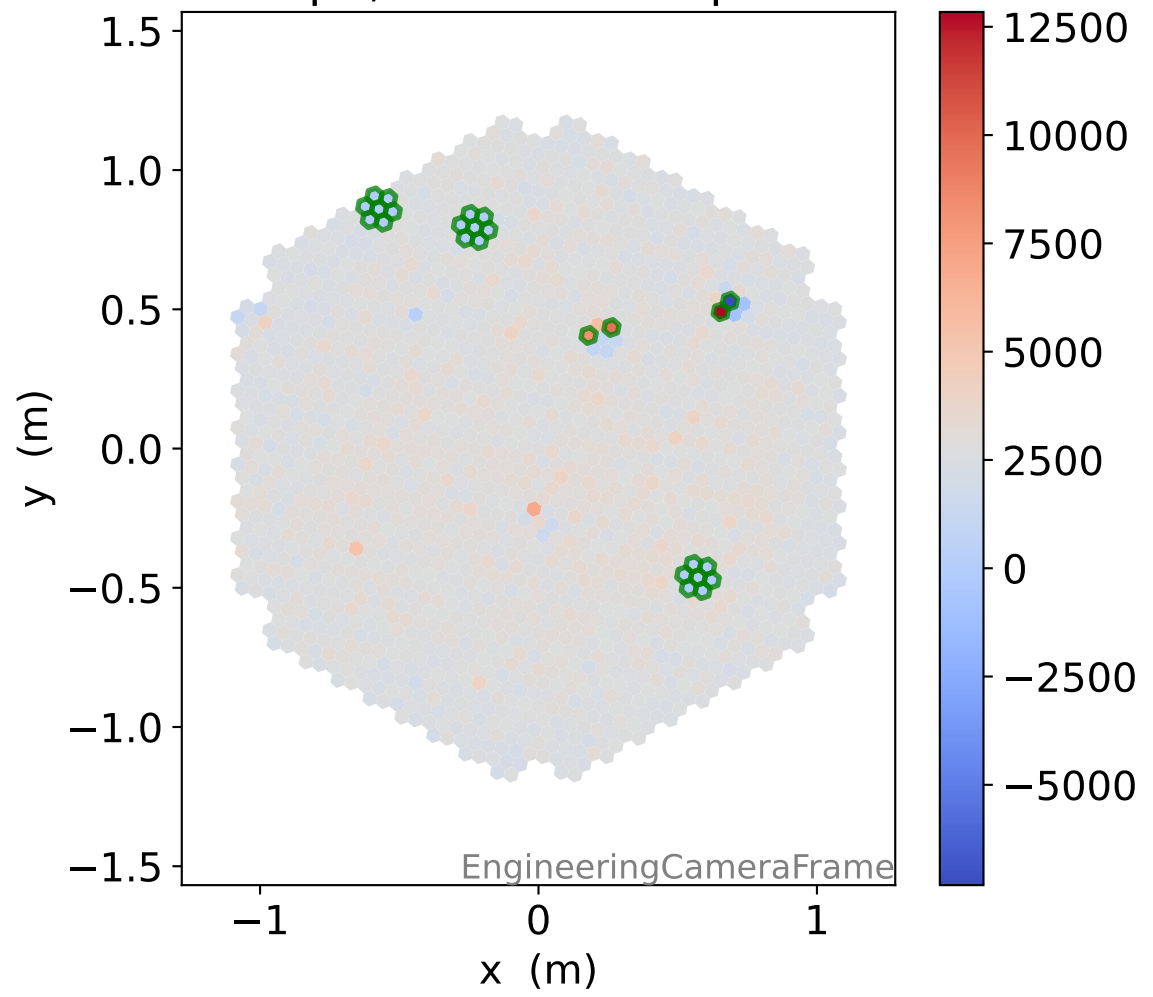
LG relative signal



HG pe, 21 unusable pixels

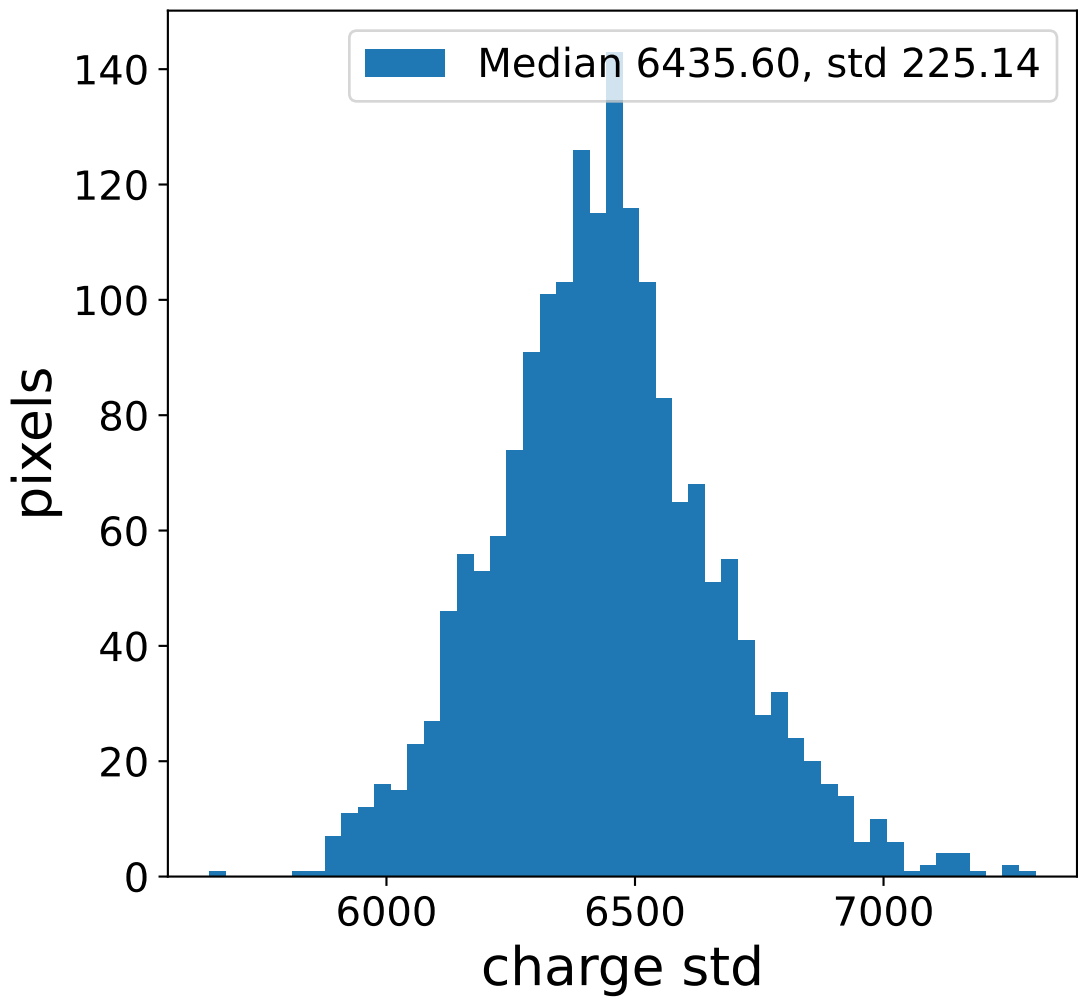
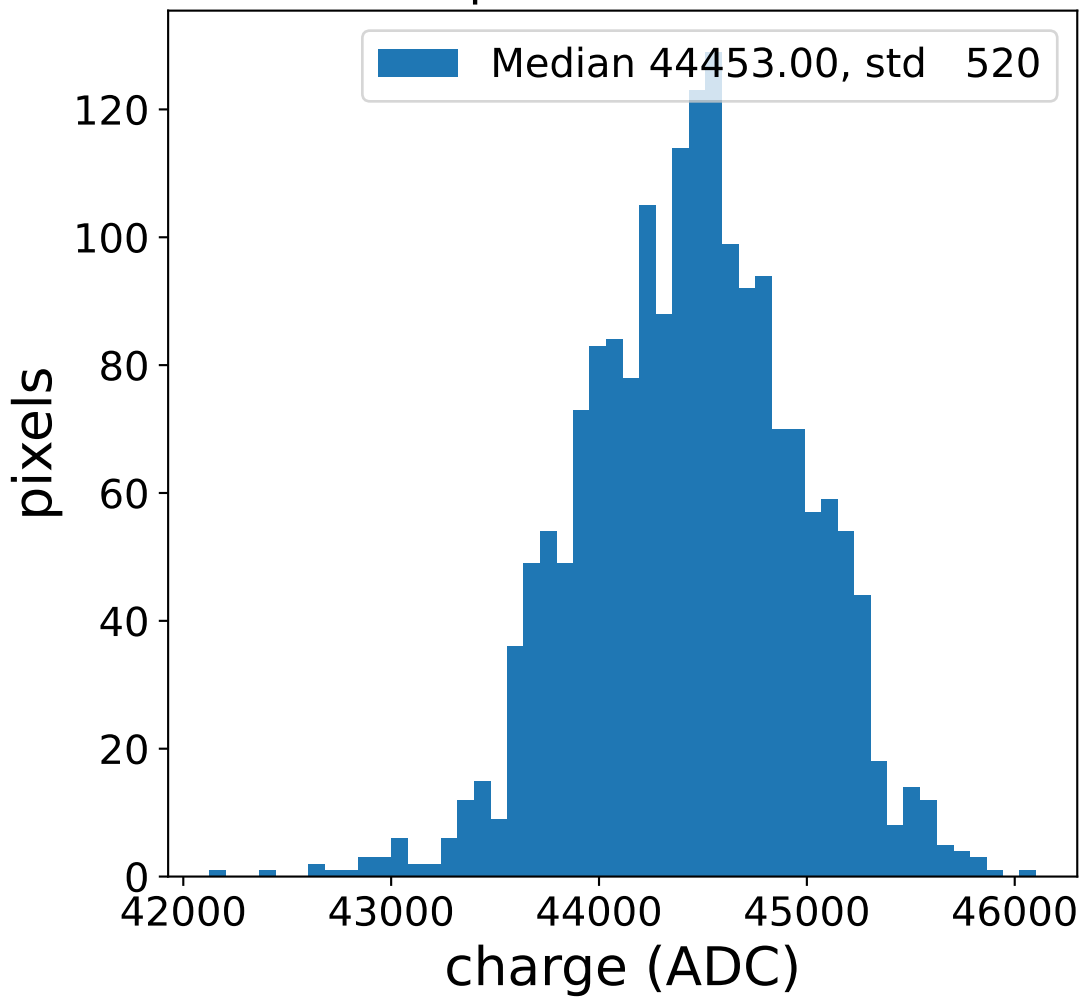


LG pe, 25 unusable pixels

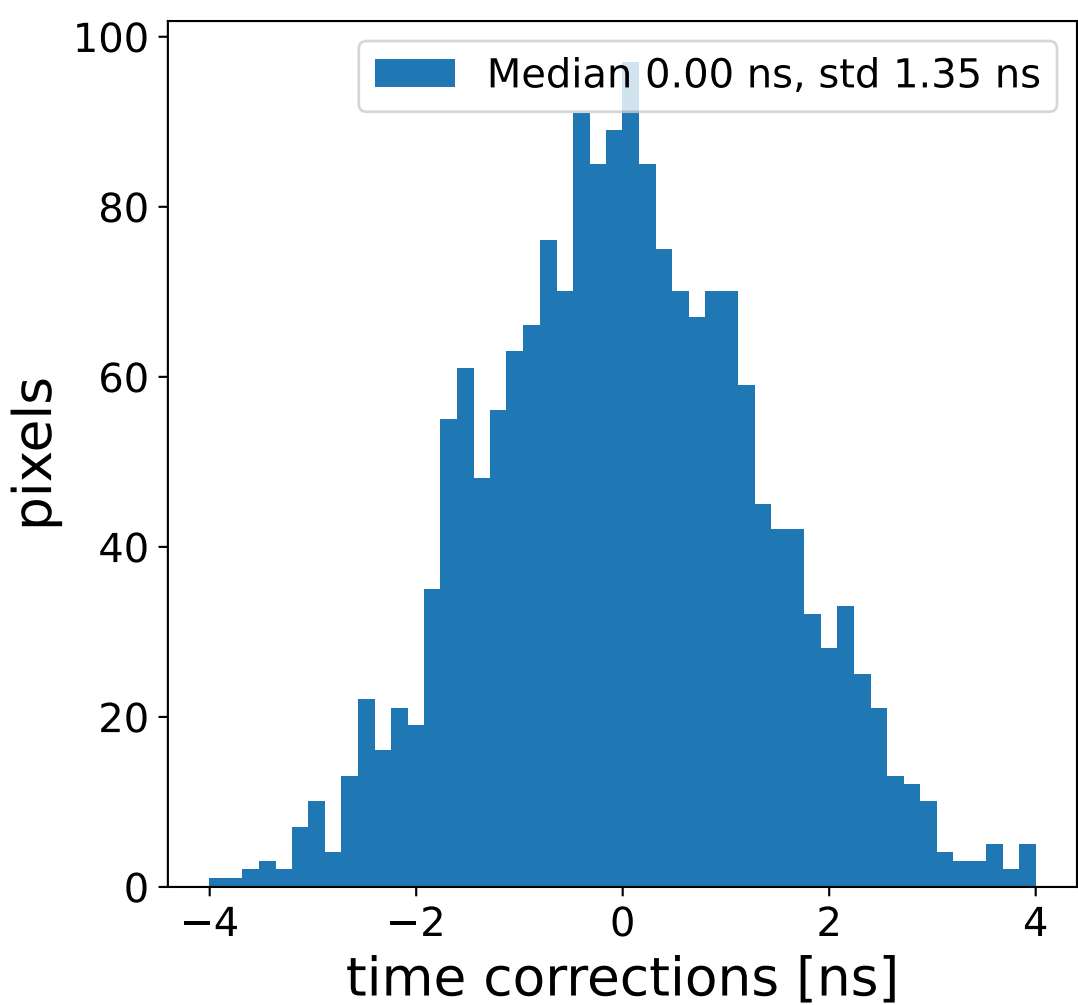
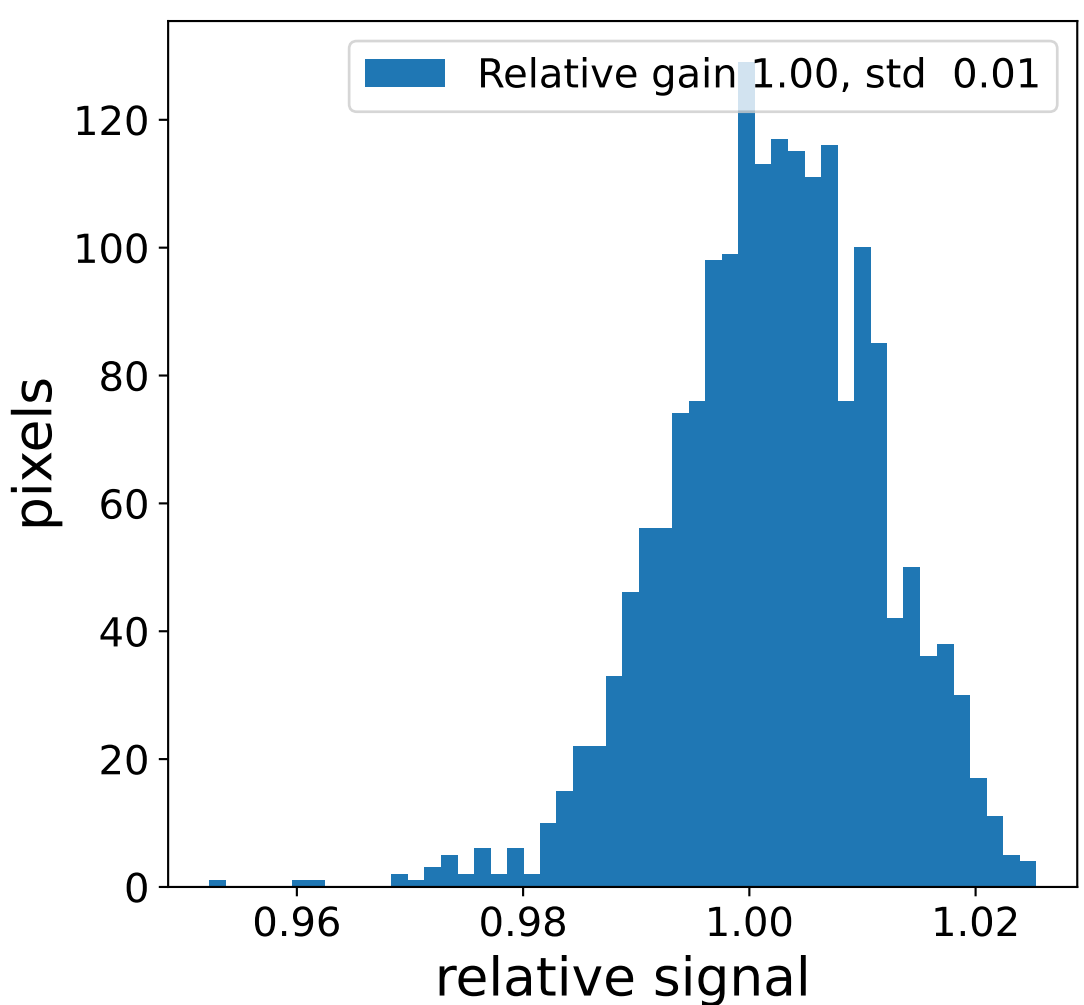
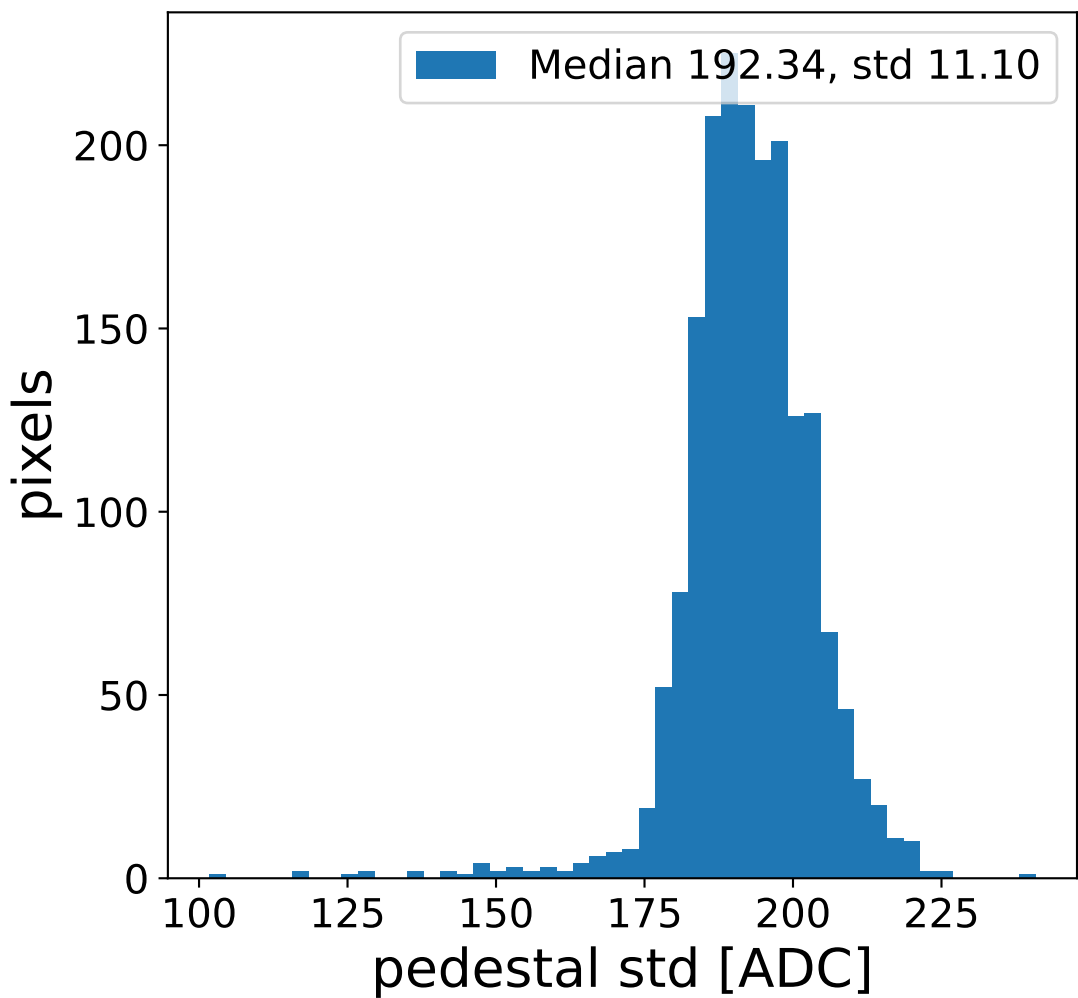
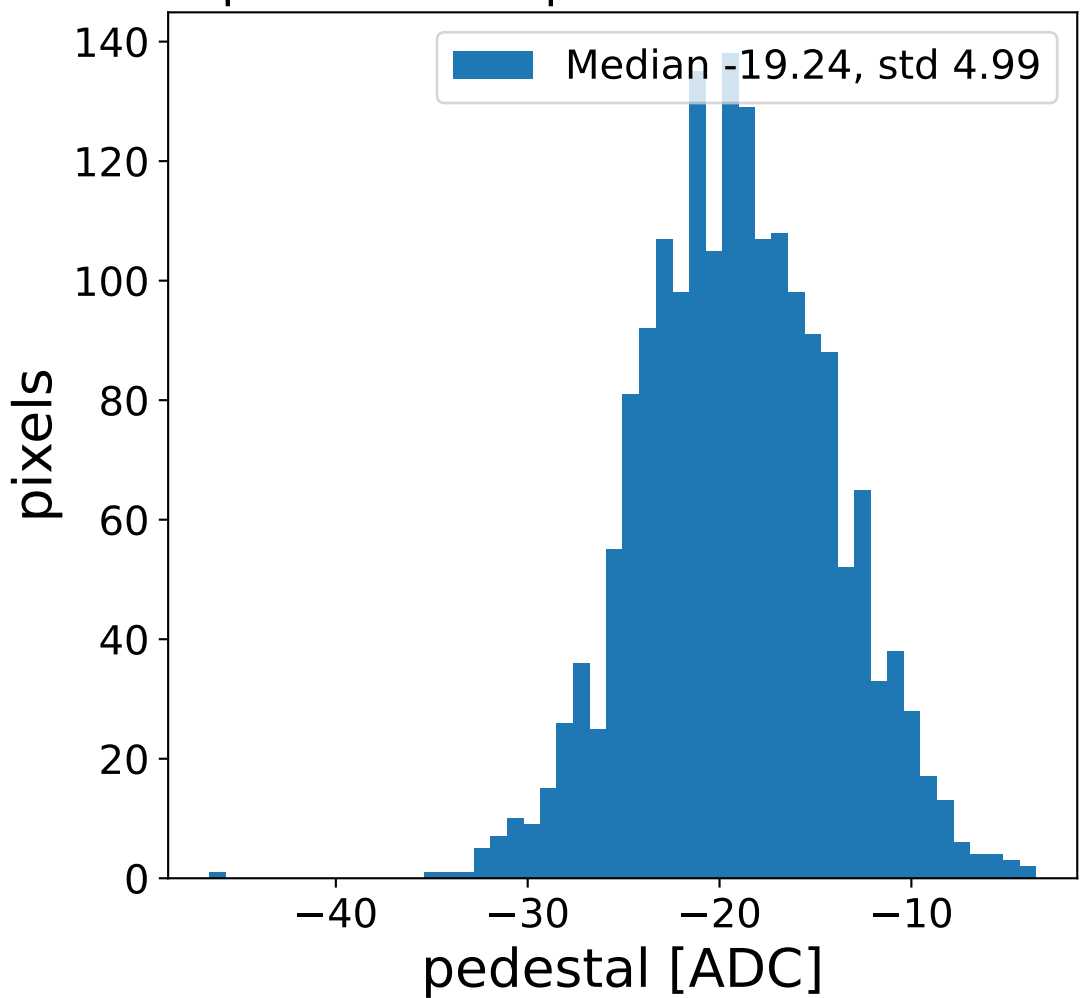


Run 19282 channel: HG

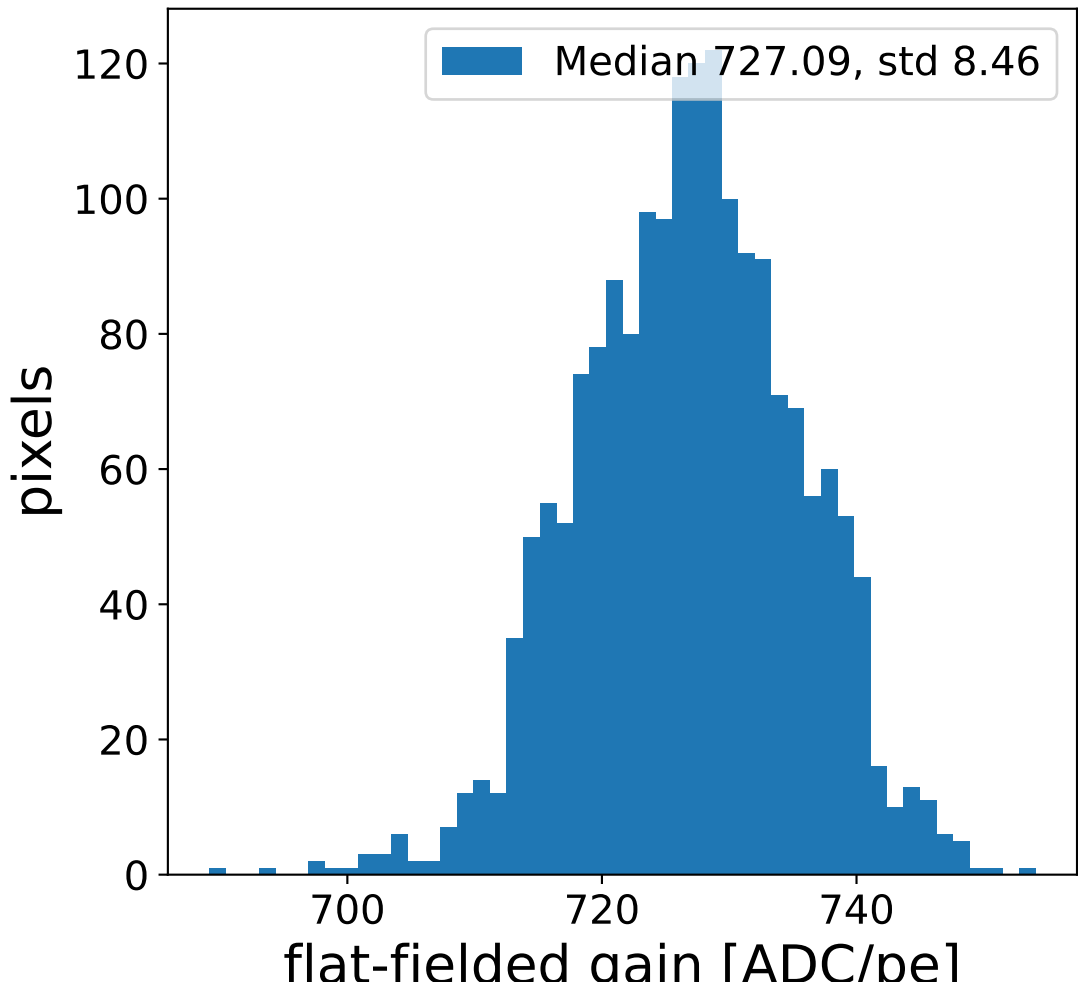
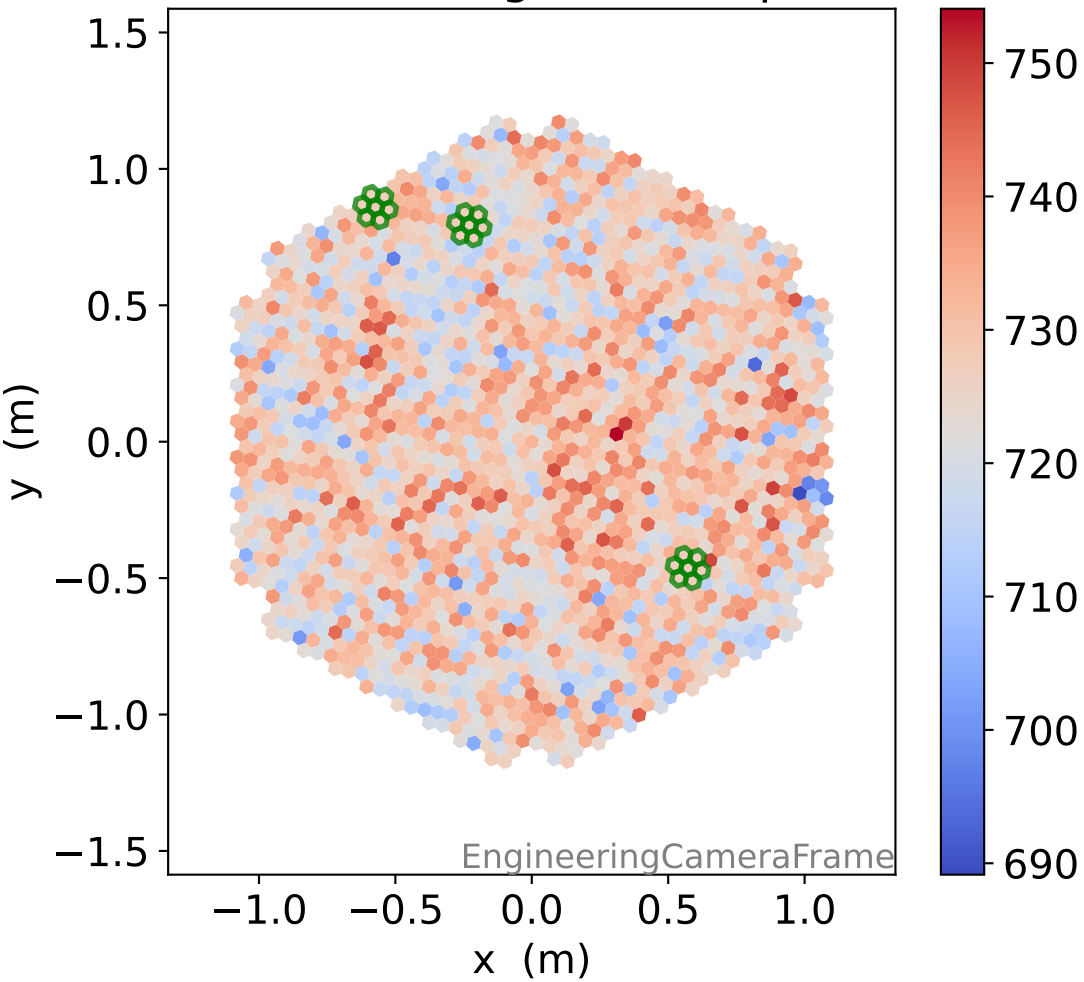
FF sample of 10000 events



pedestal sample of 10000 events

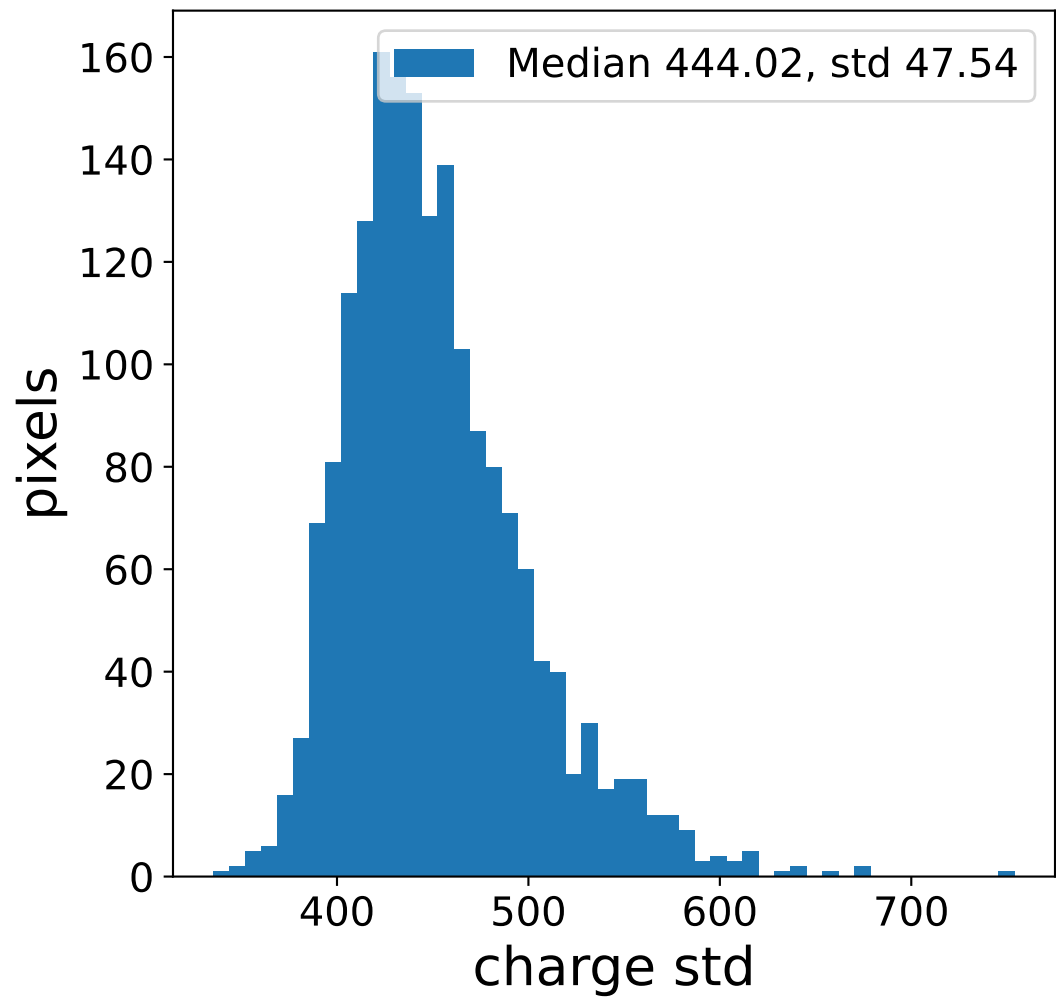
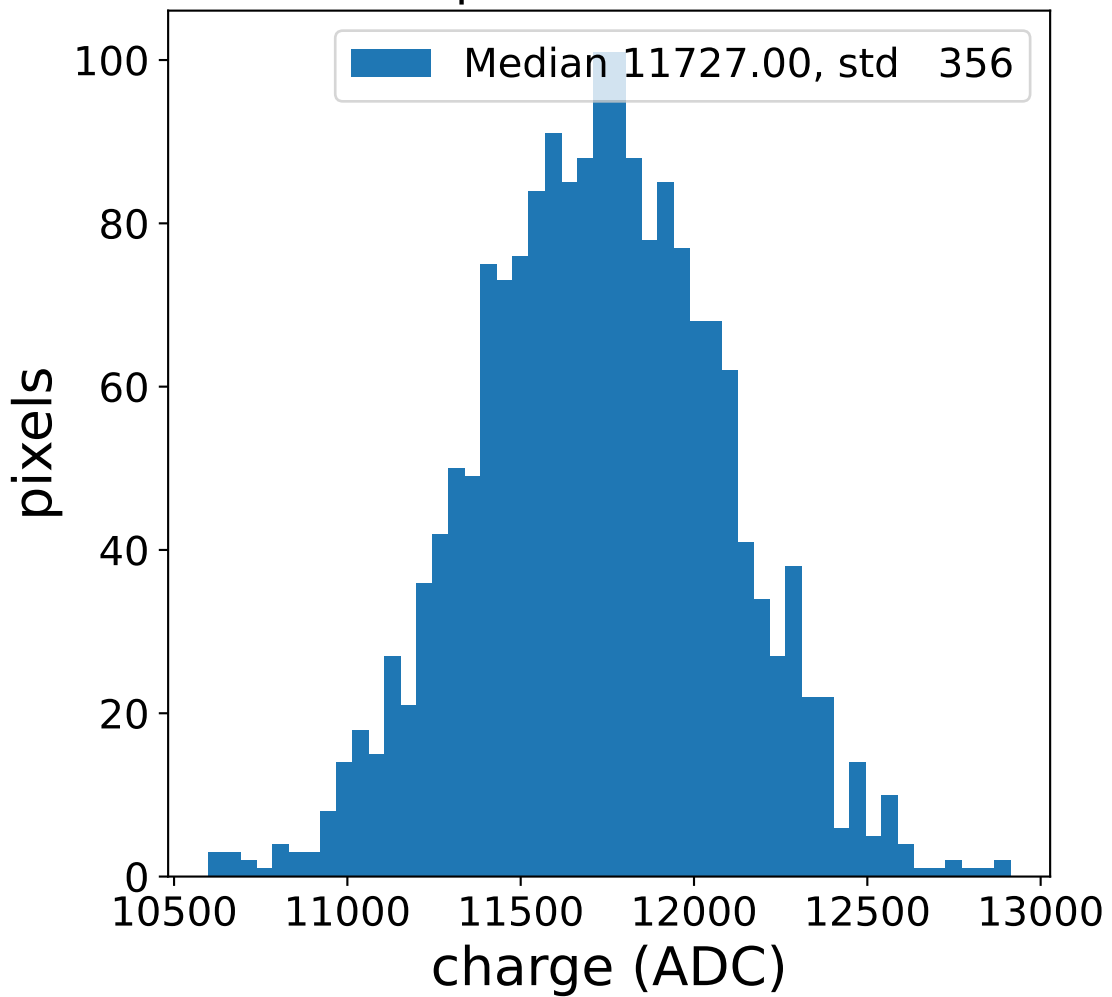


flat-fielded gain [ADC/pe]

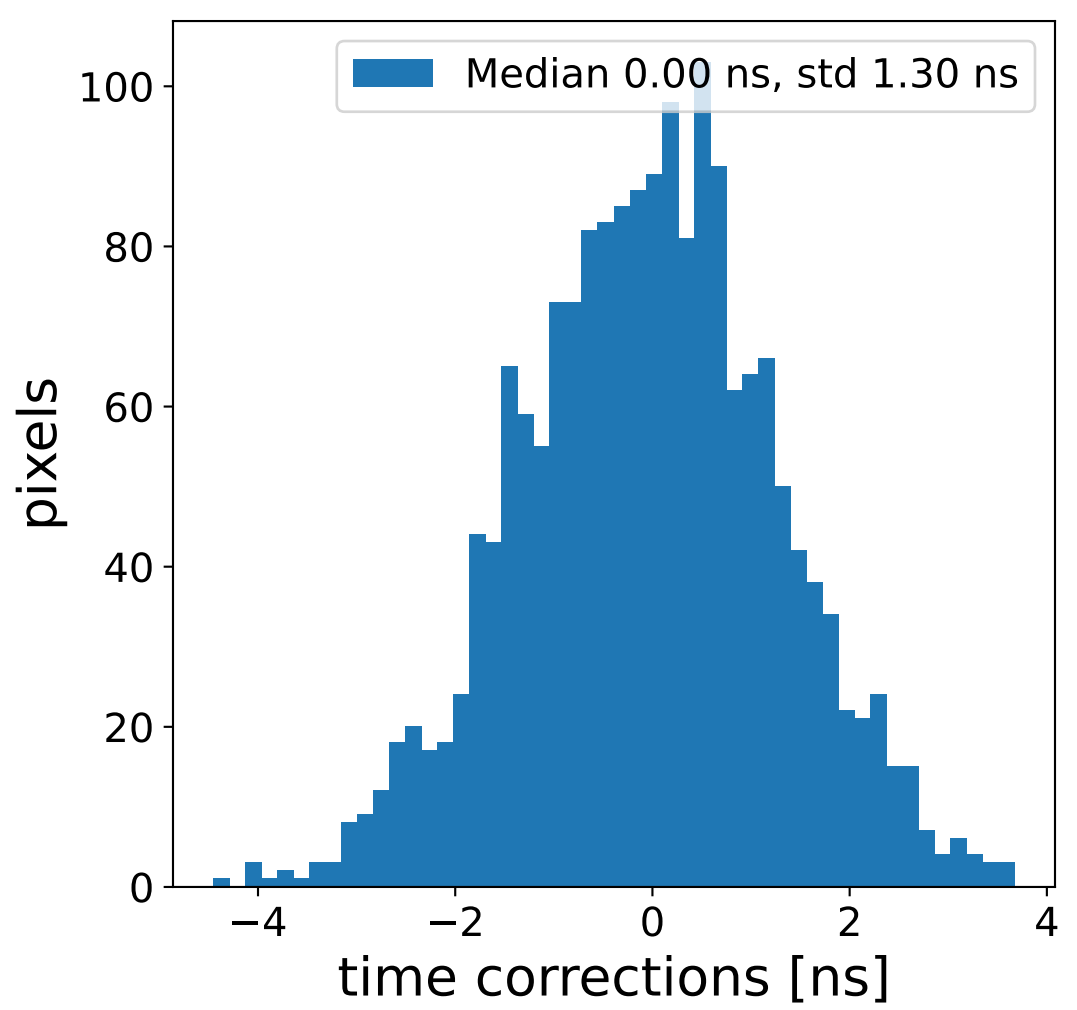
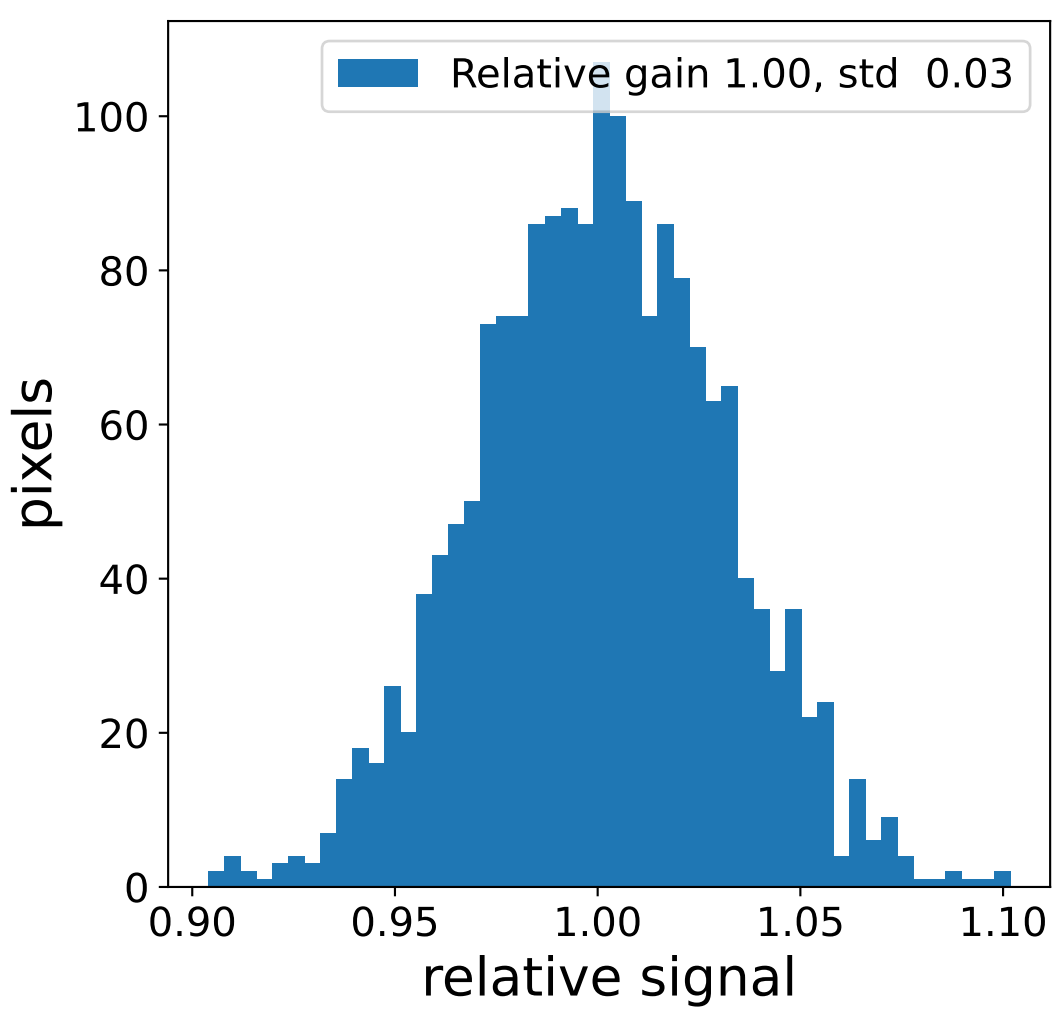
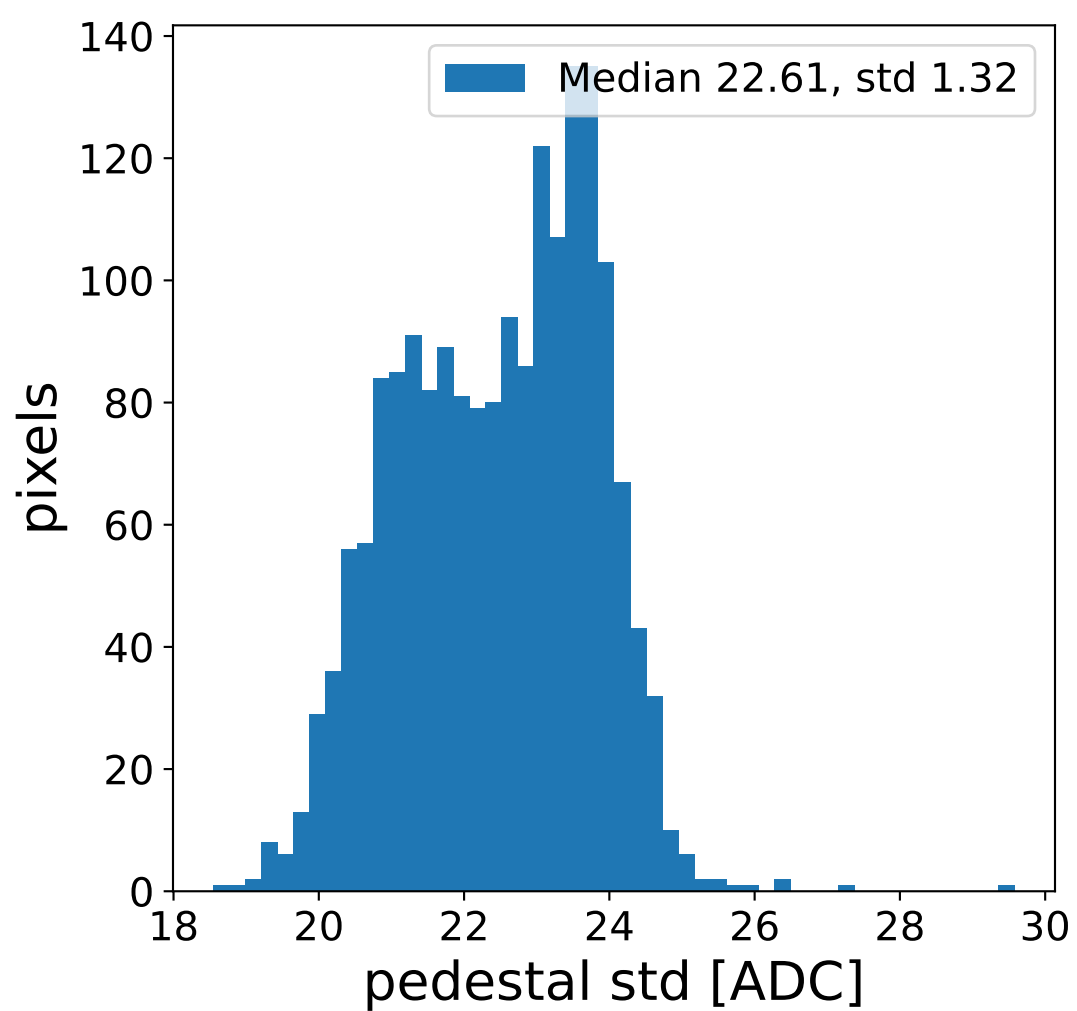
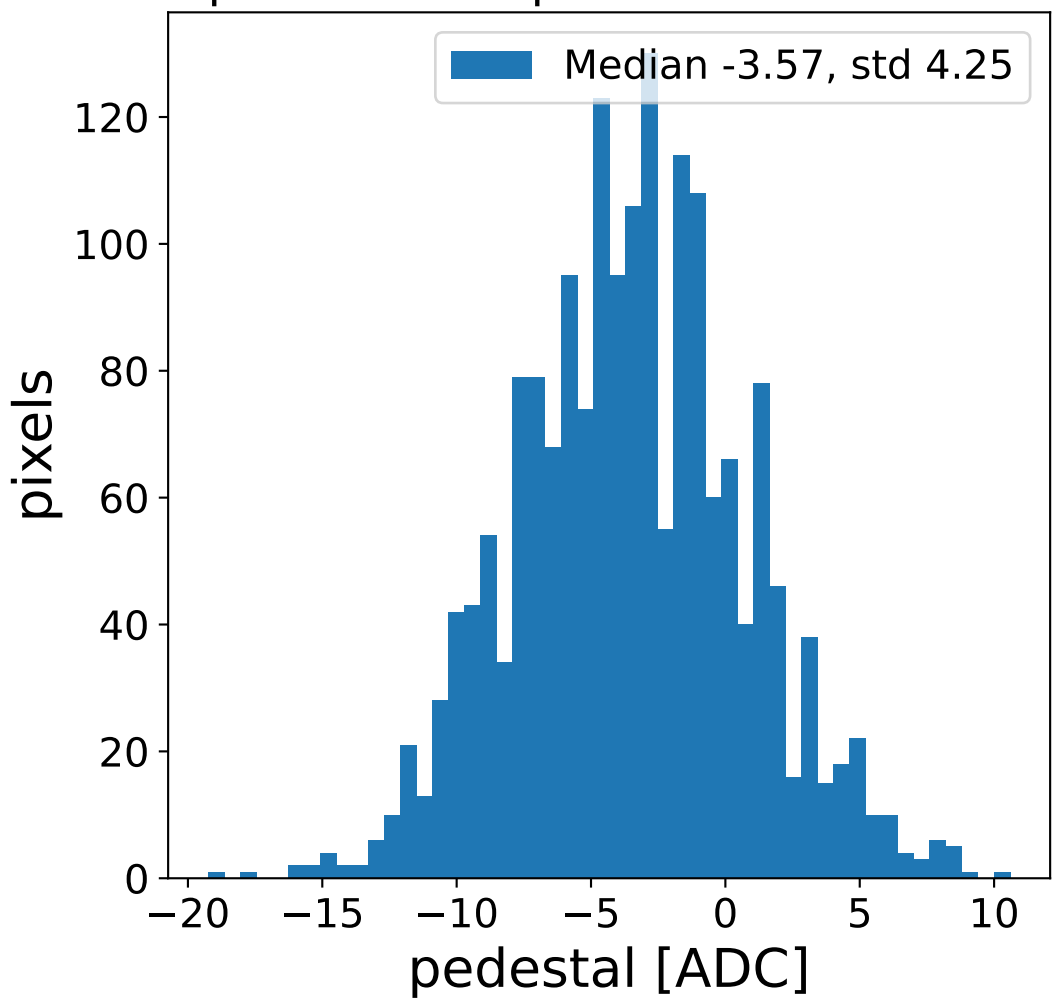


Run 19282 channel: LG

FF sample of 10000 events



pedestal sample of 10000 events



flat-fielded gain [ADC/pe]

