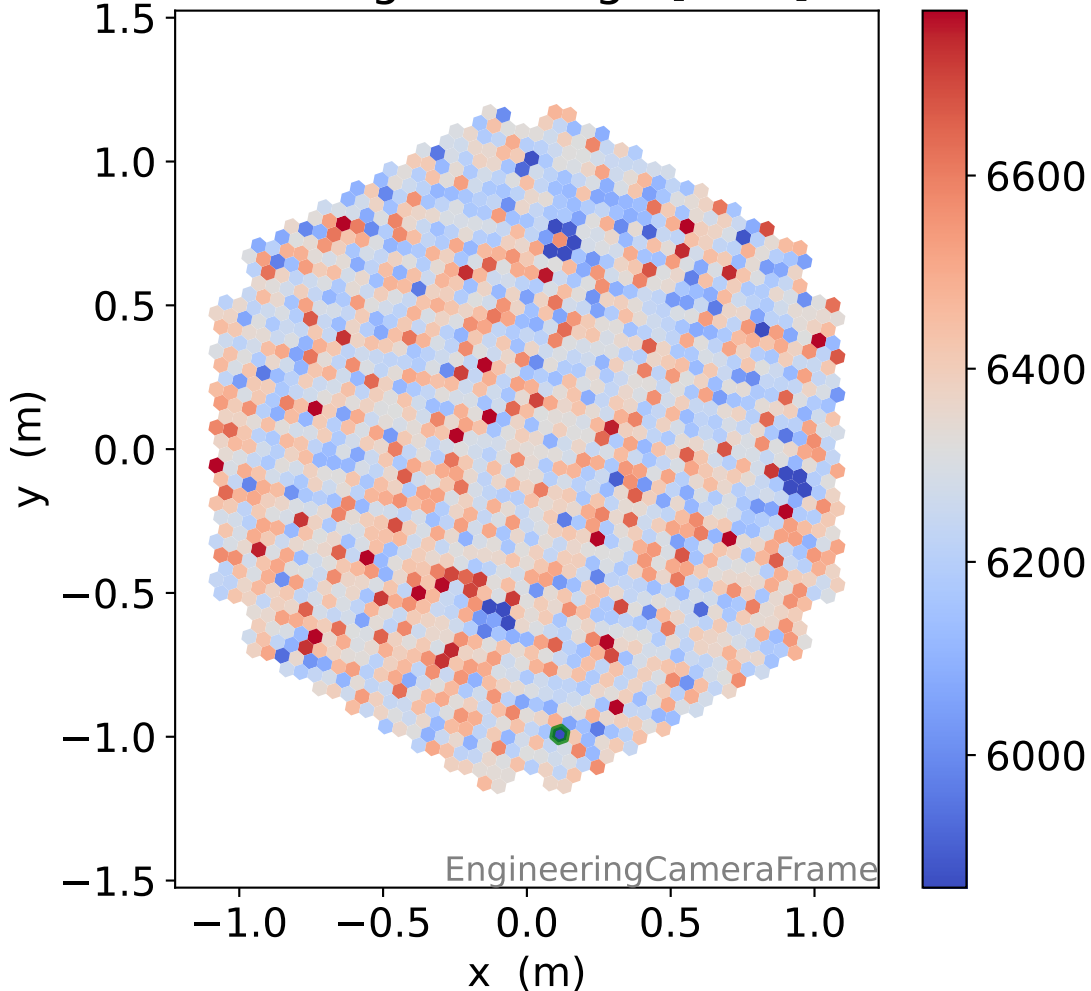
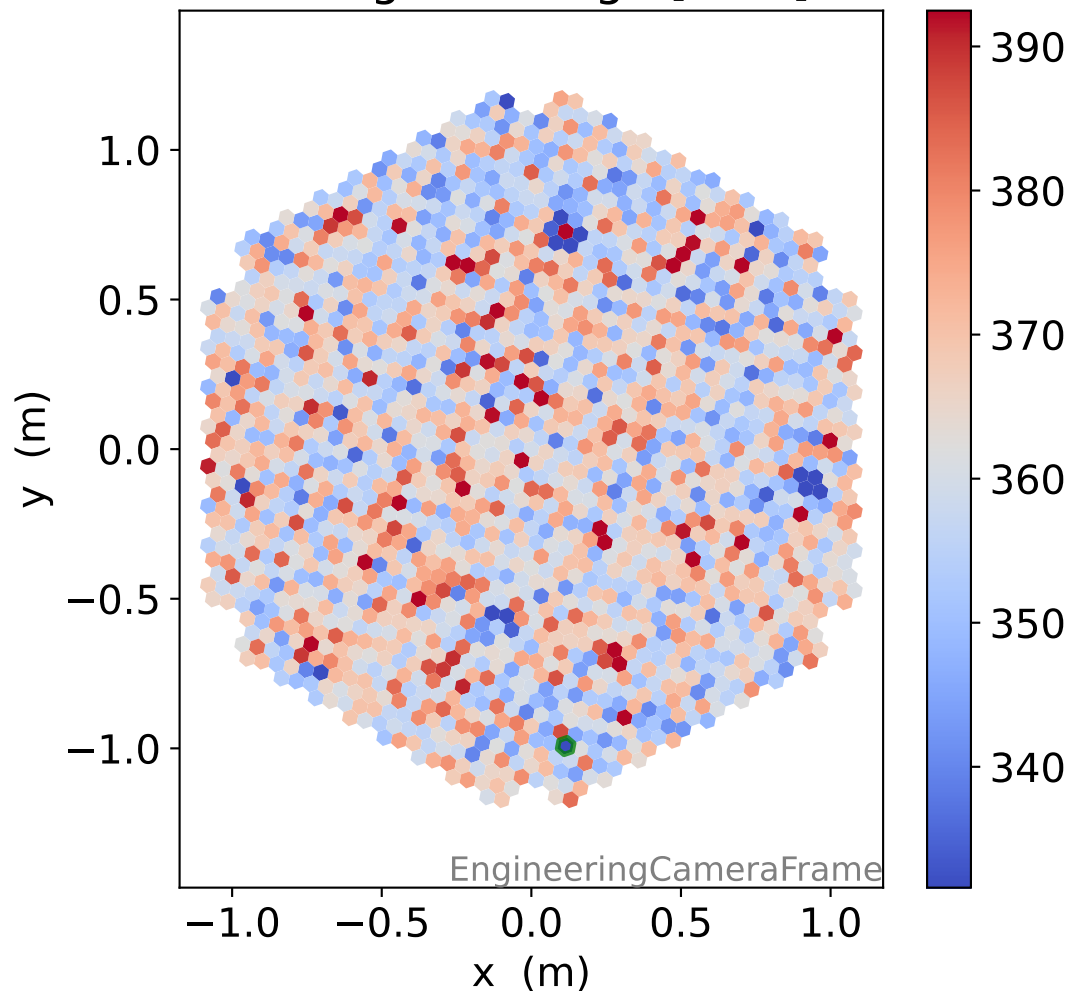


# Run 5502

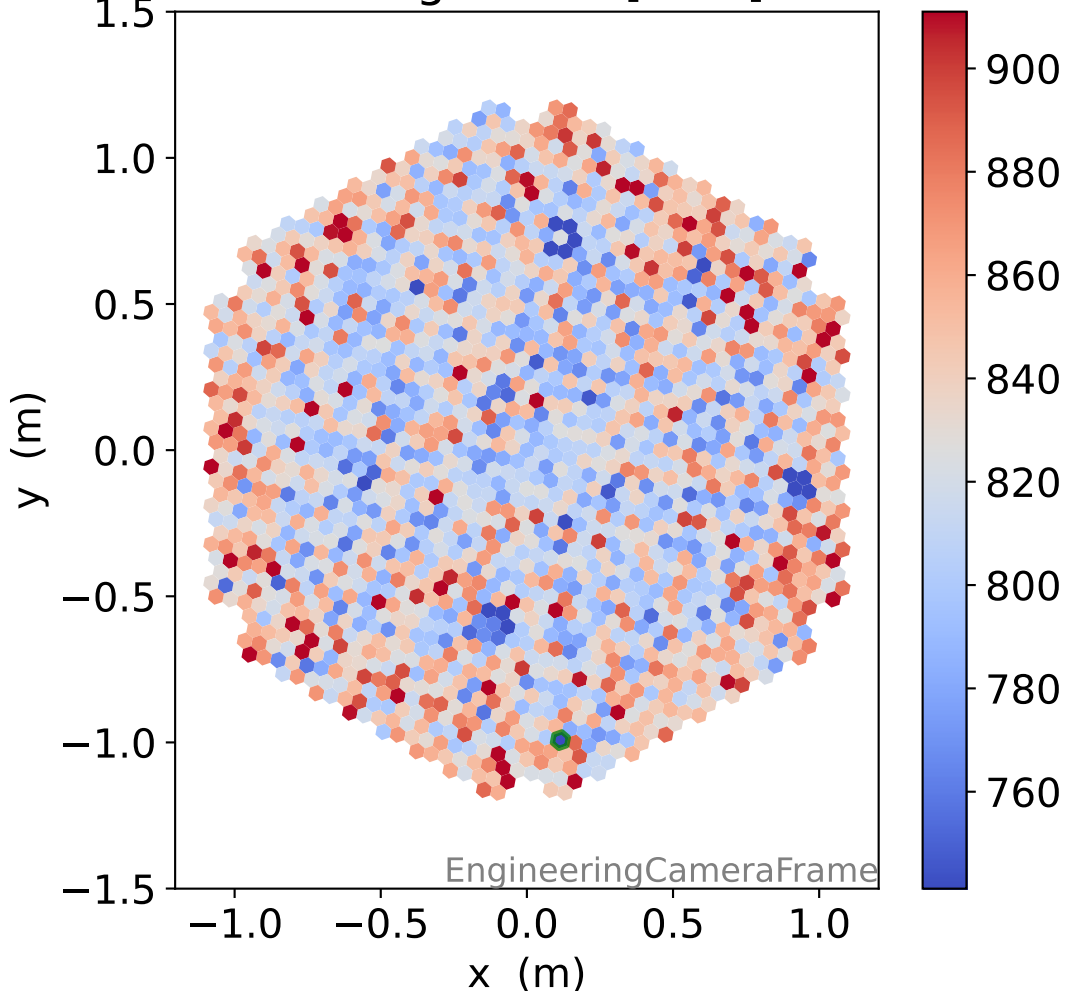
### HG signal charge [ADC]



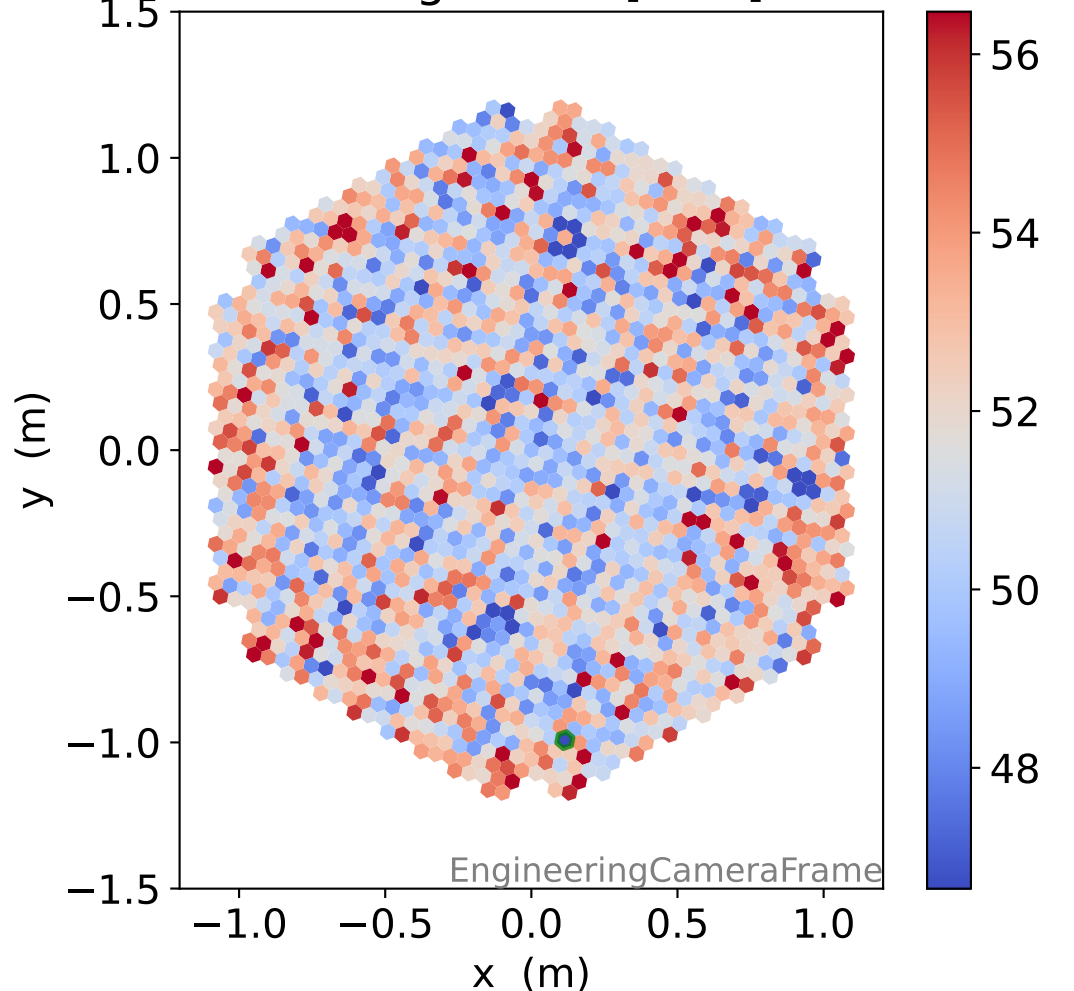
### LG signal charge [ADC]



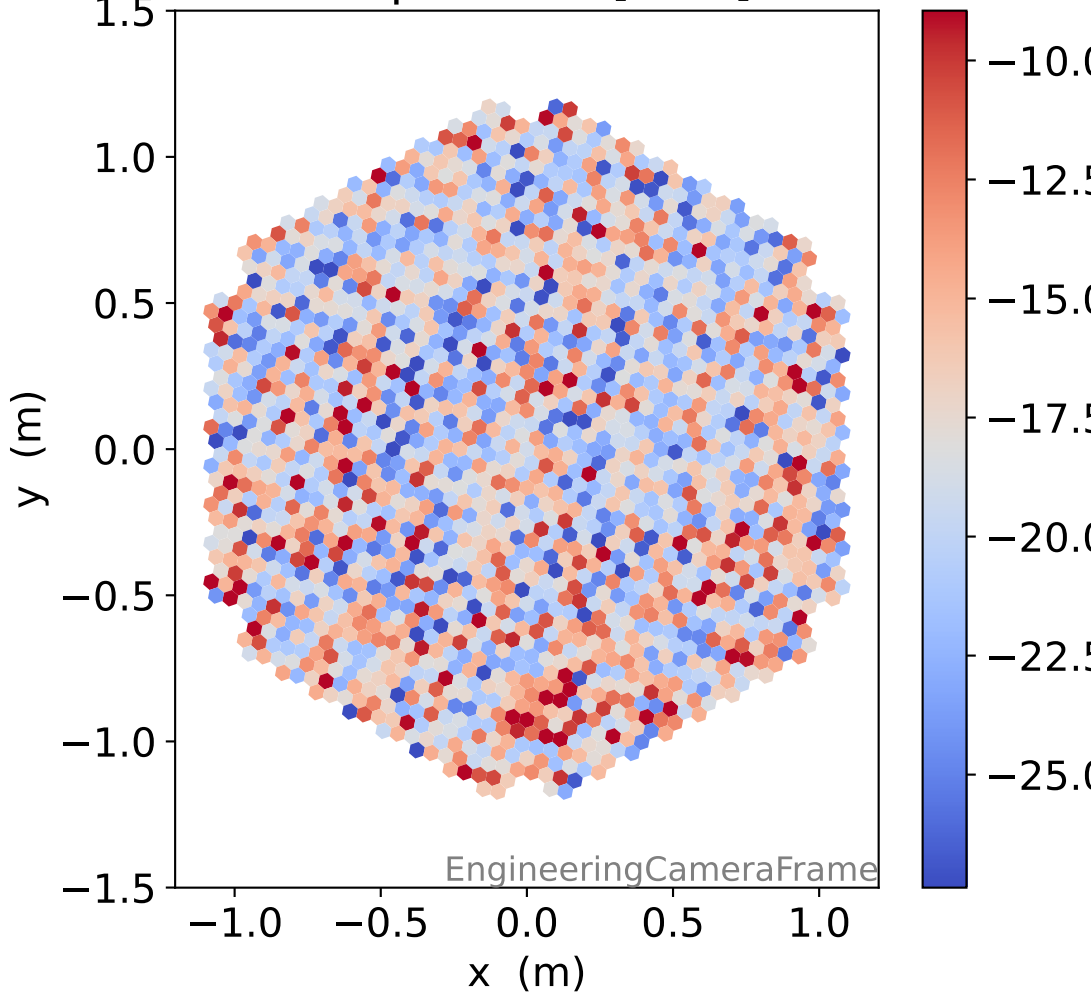
### HG signal std [ADC]



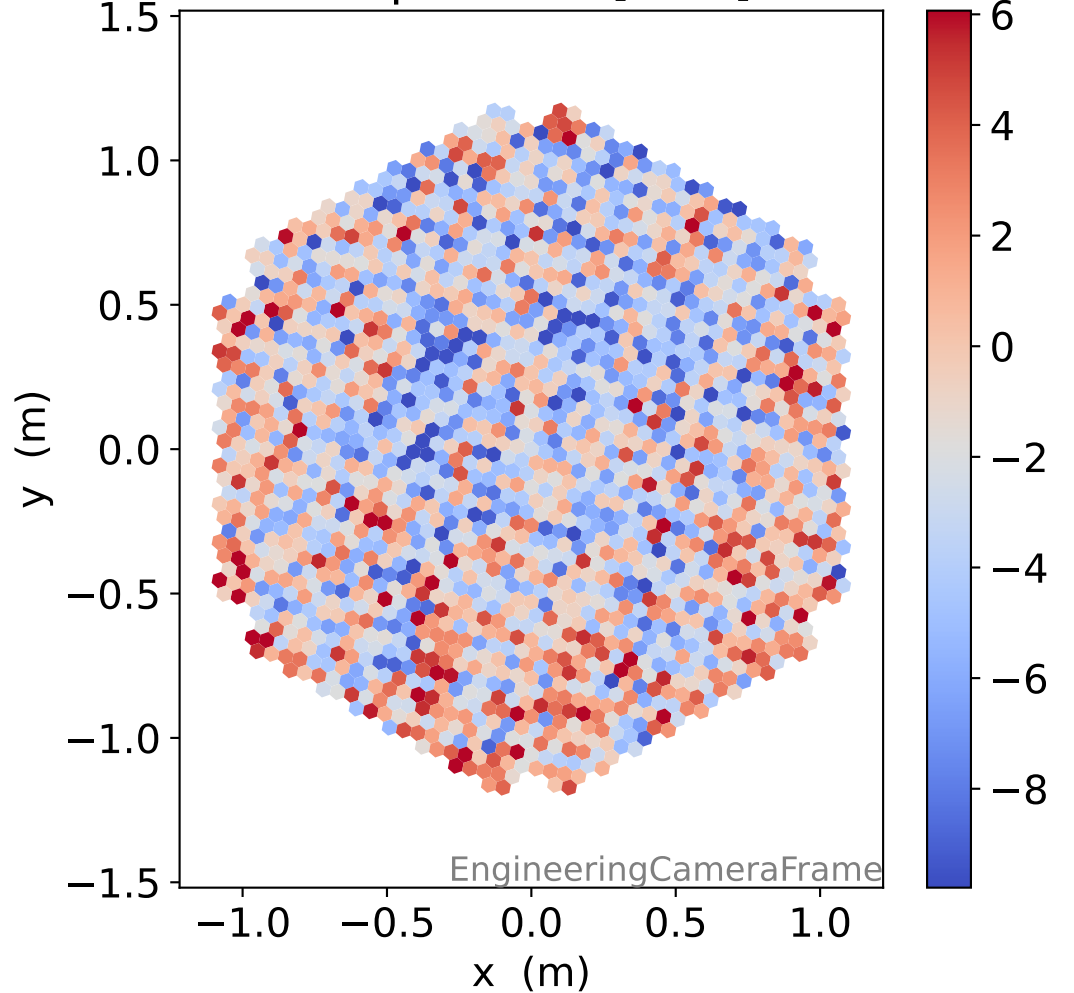
### LG signal std [ADC]



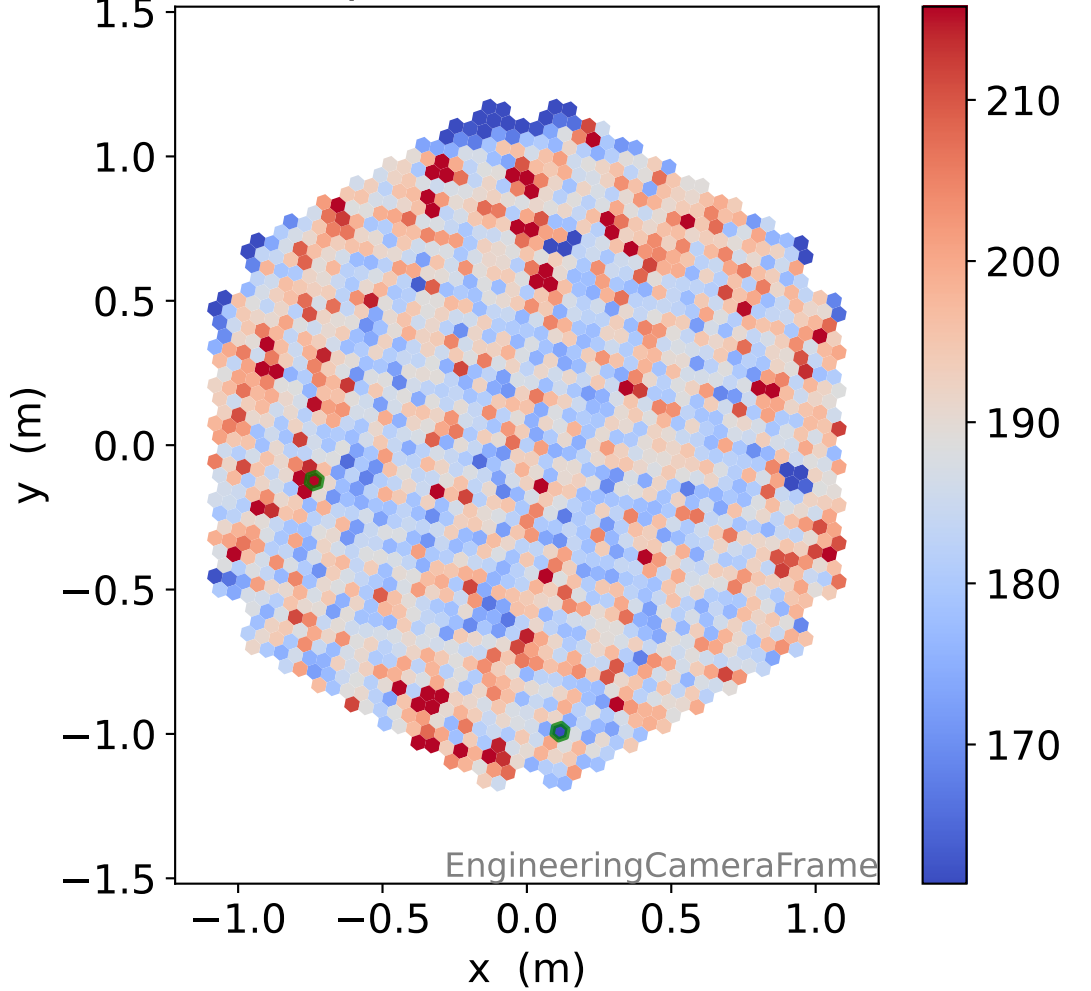
### HG pedestal [ADC]



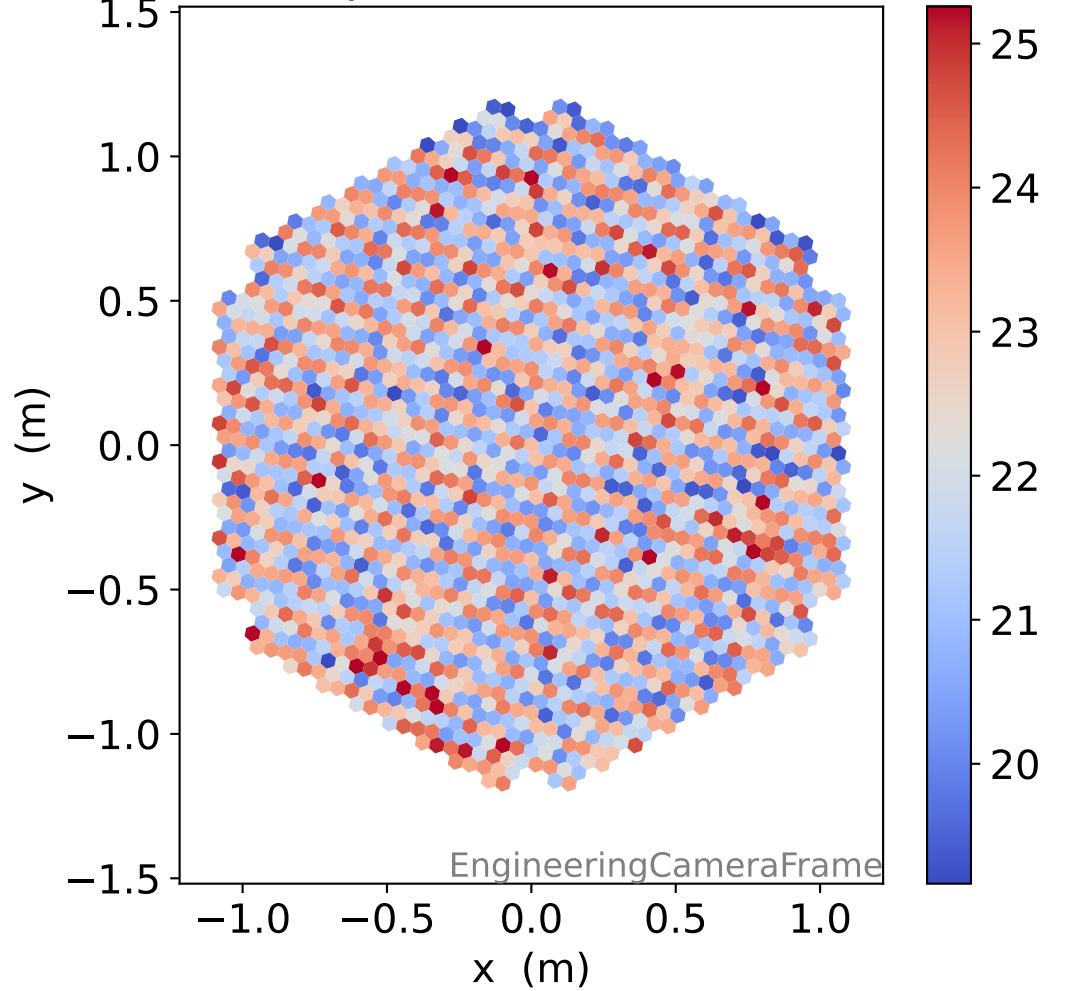
### LG pedestal [ADC]



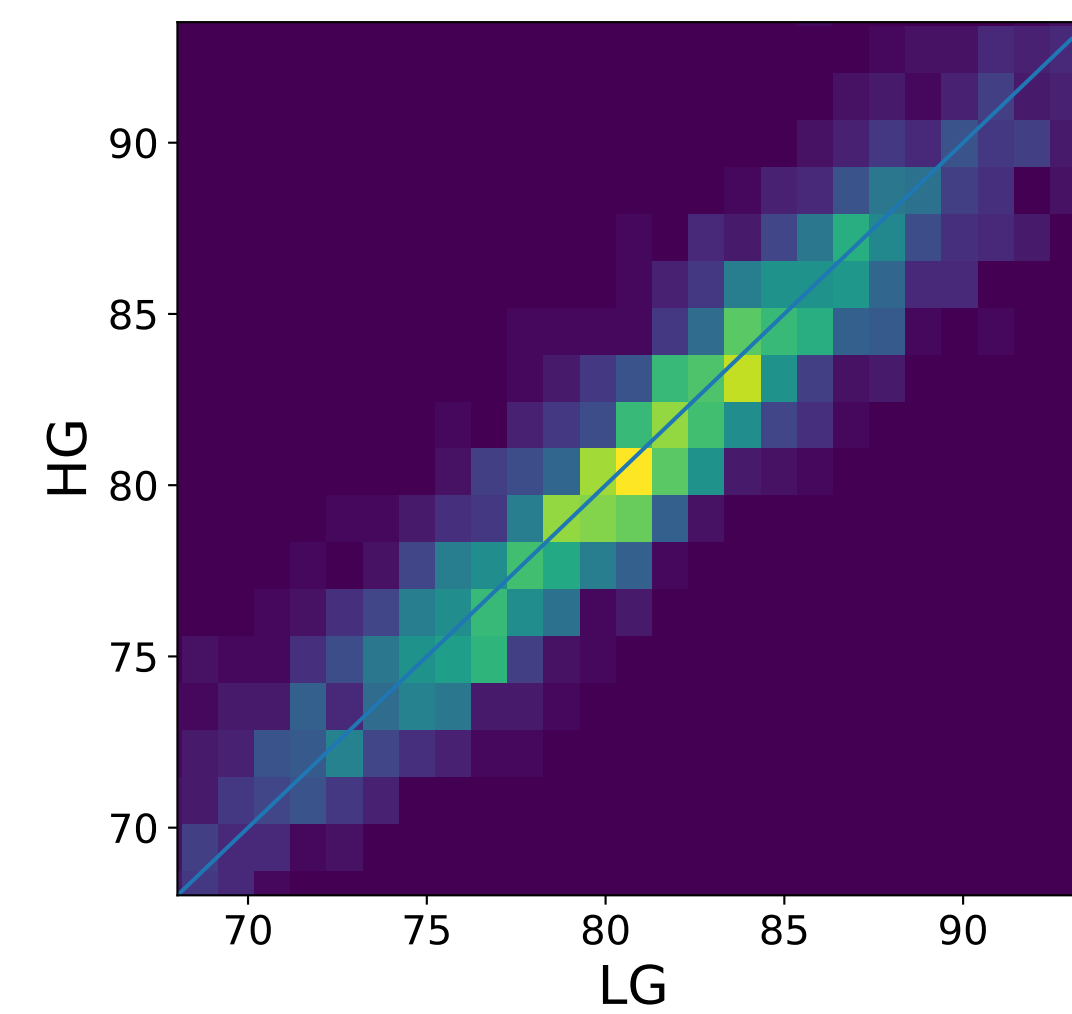
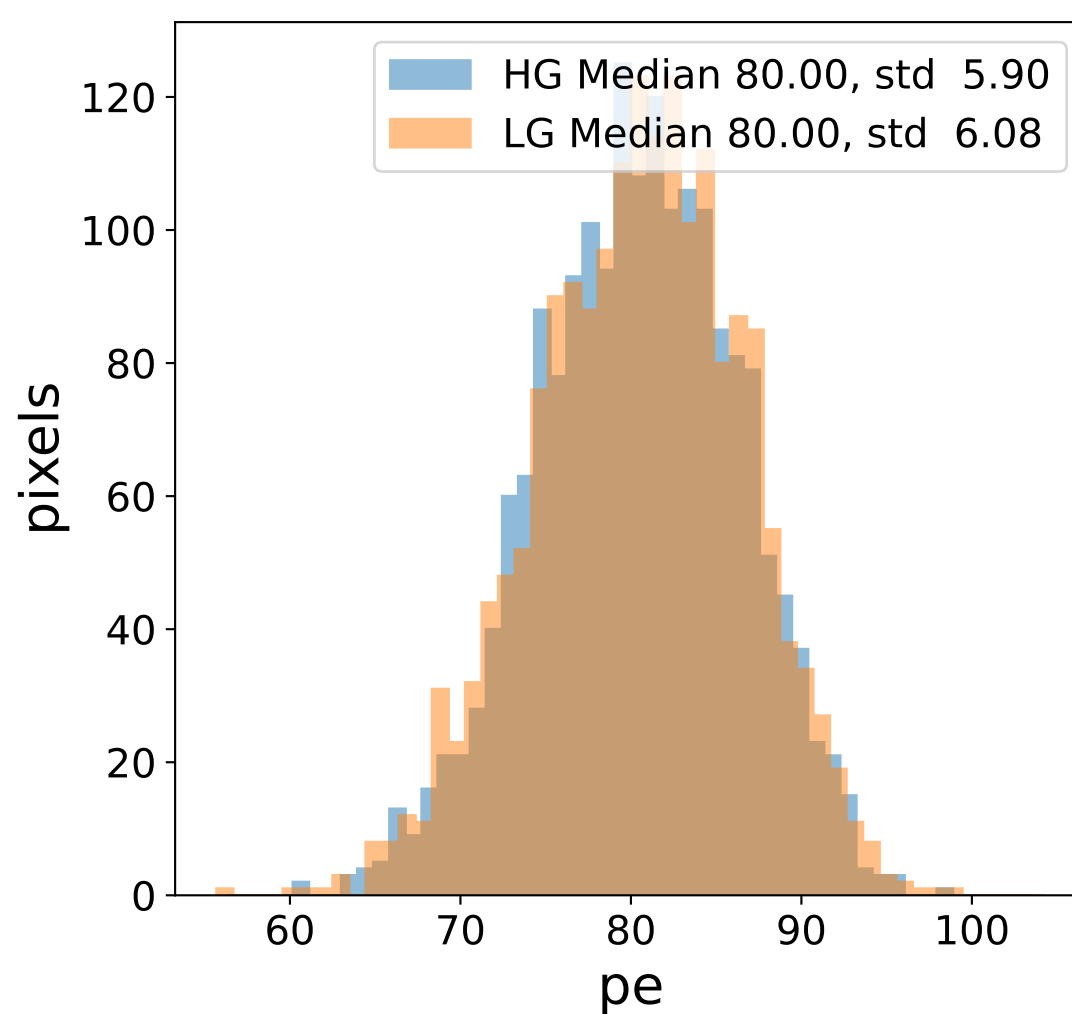
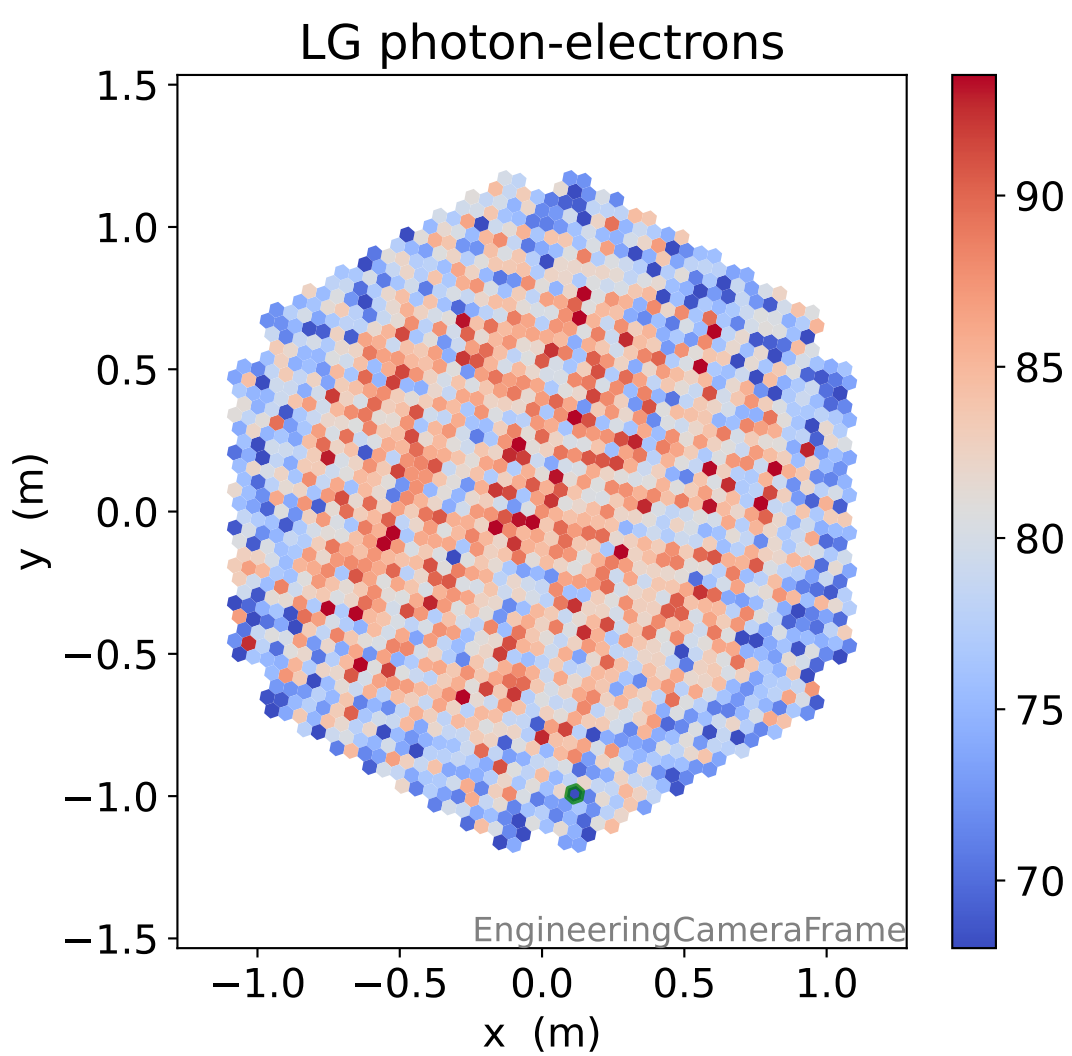
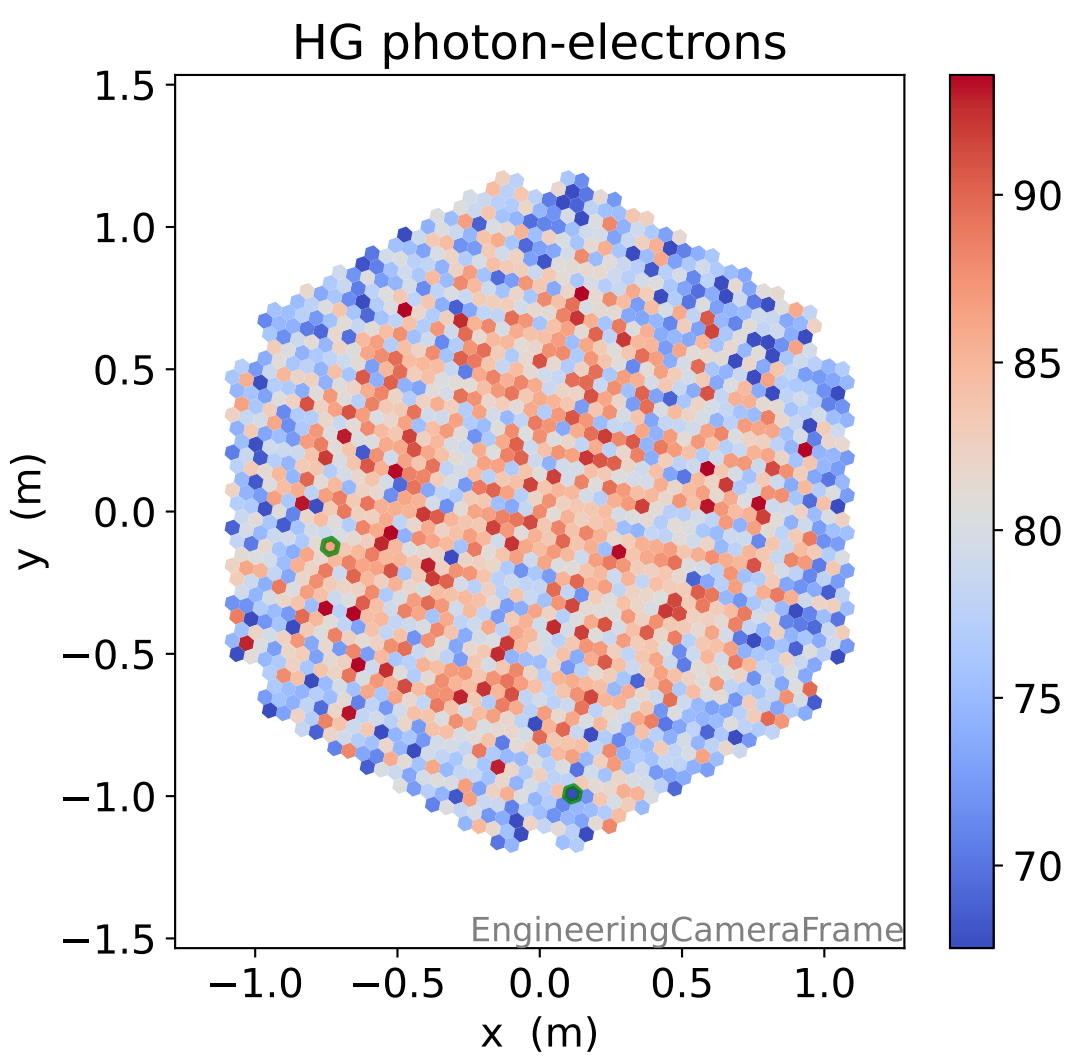
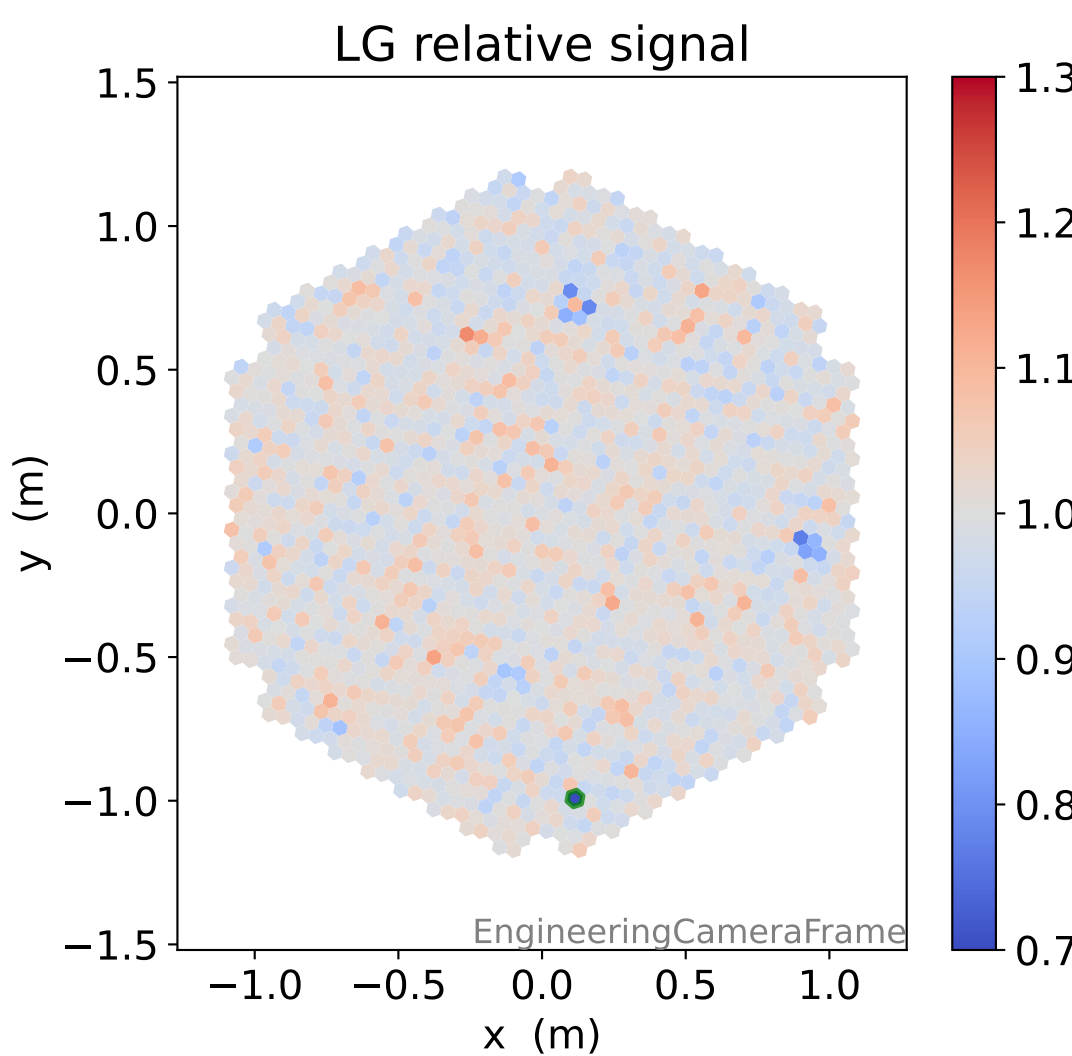
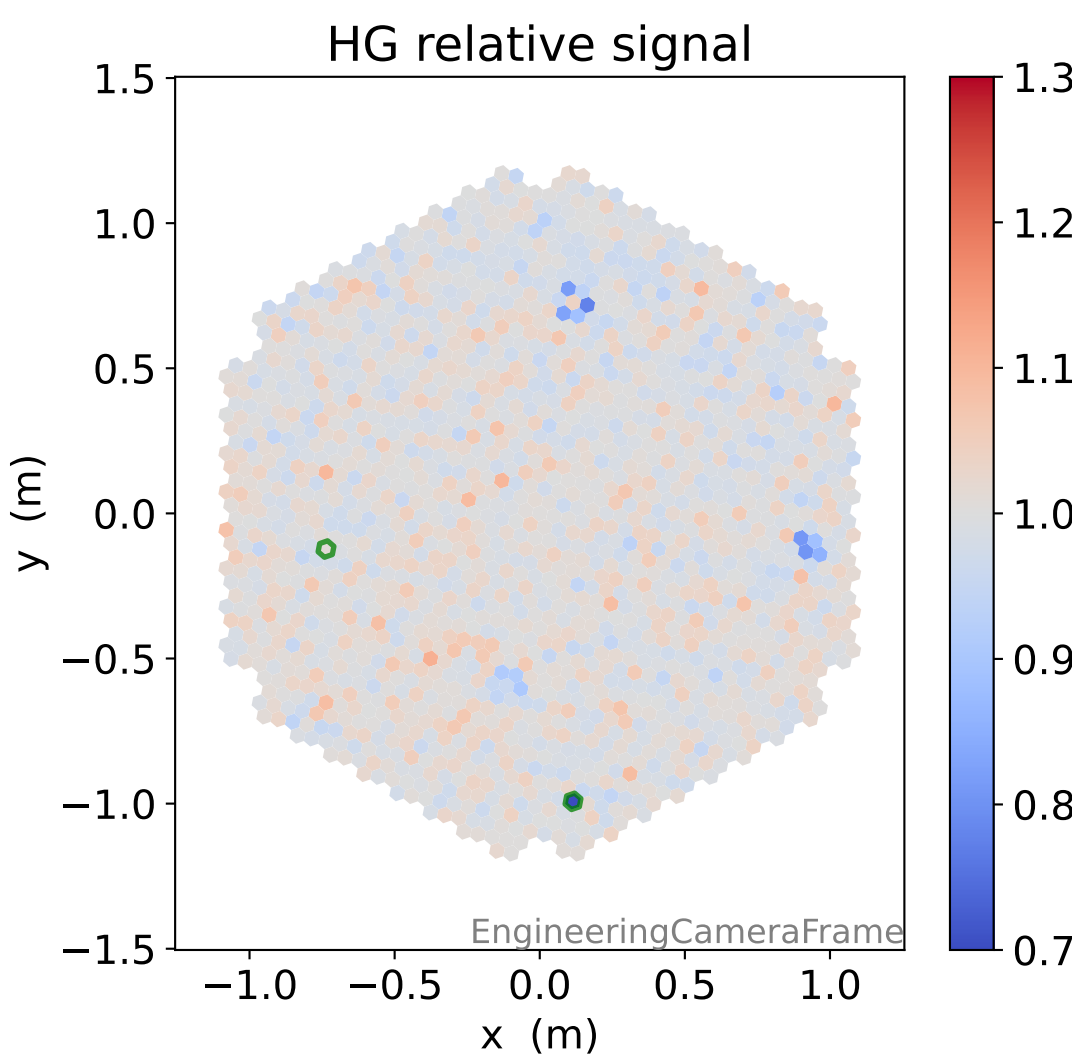
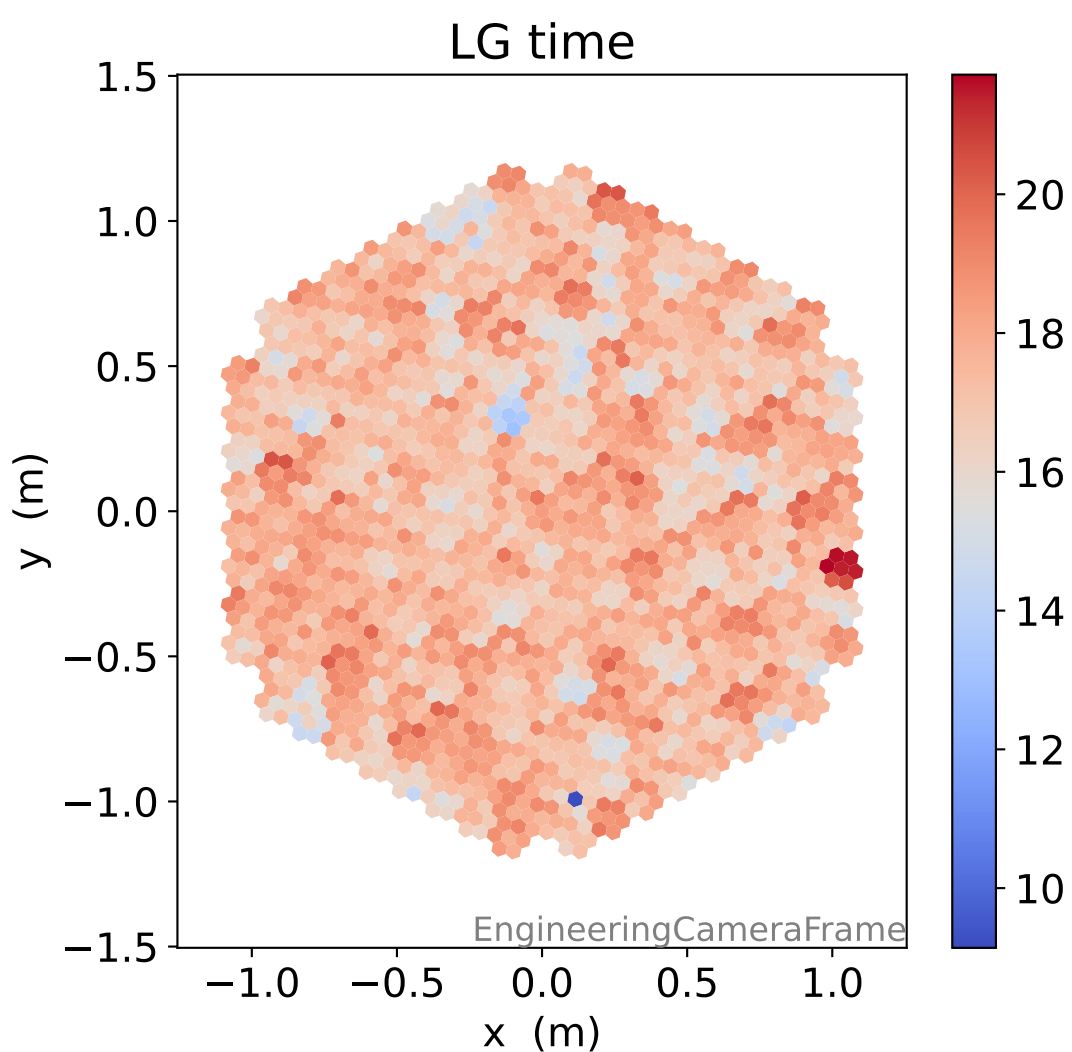
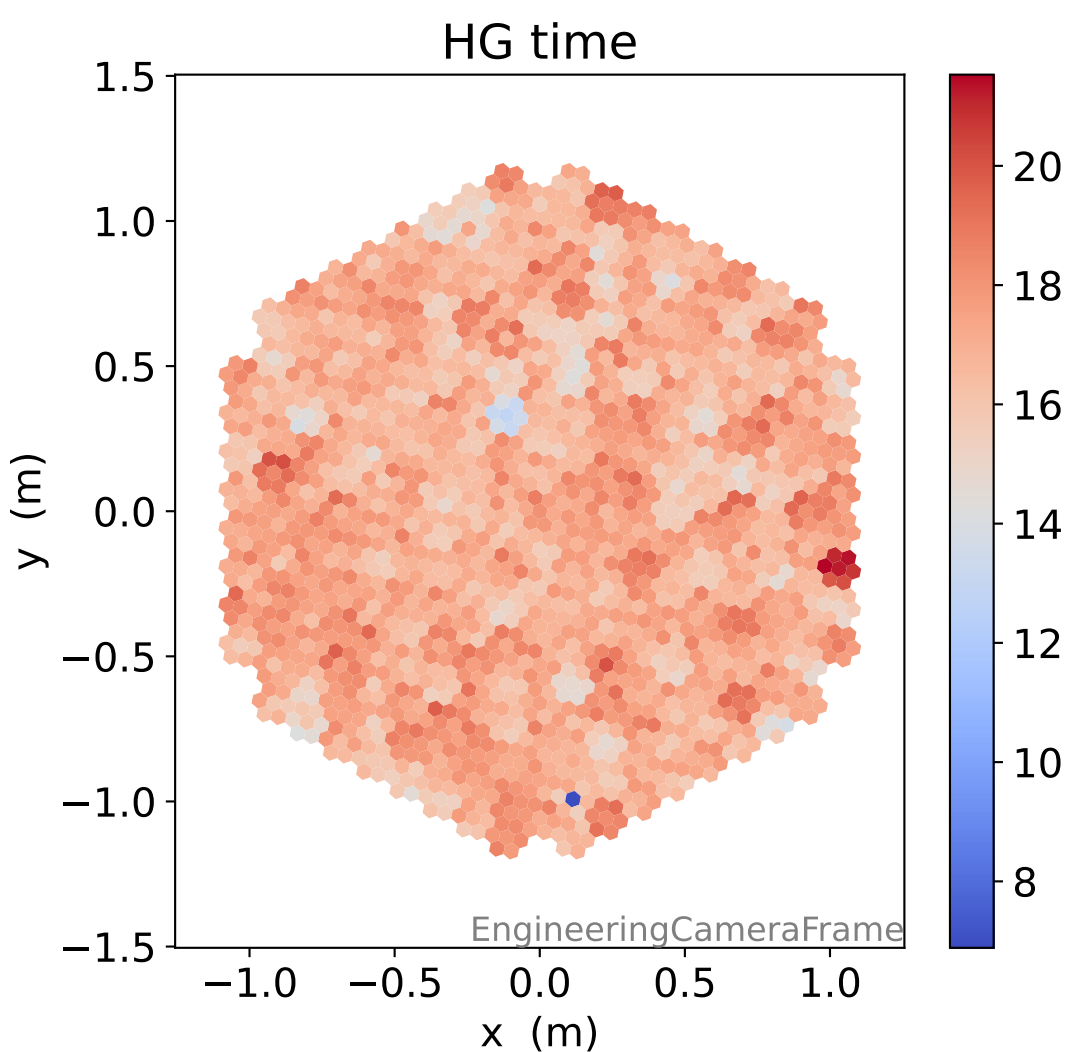
### HG pedestal std [ADC]



### LG pedestal std [ADC]

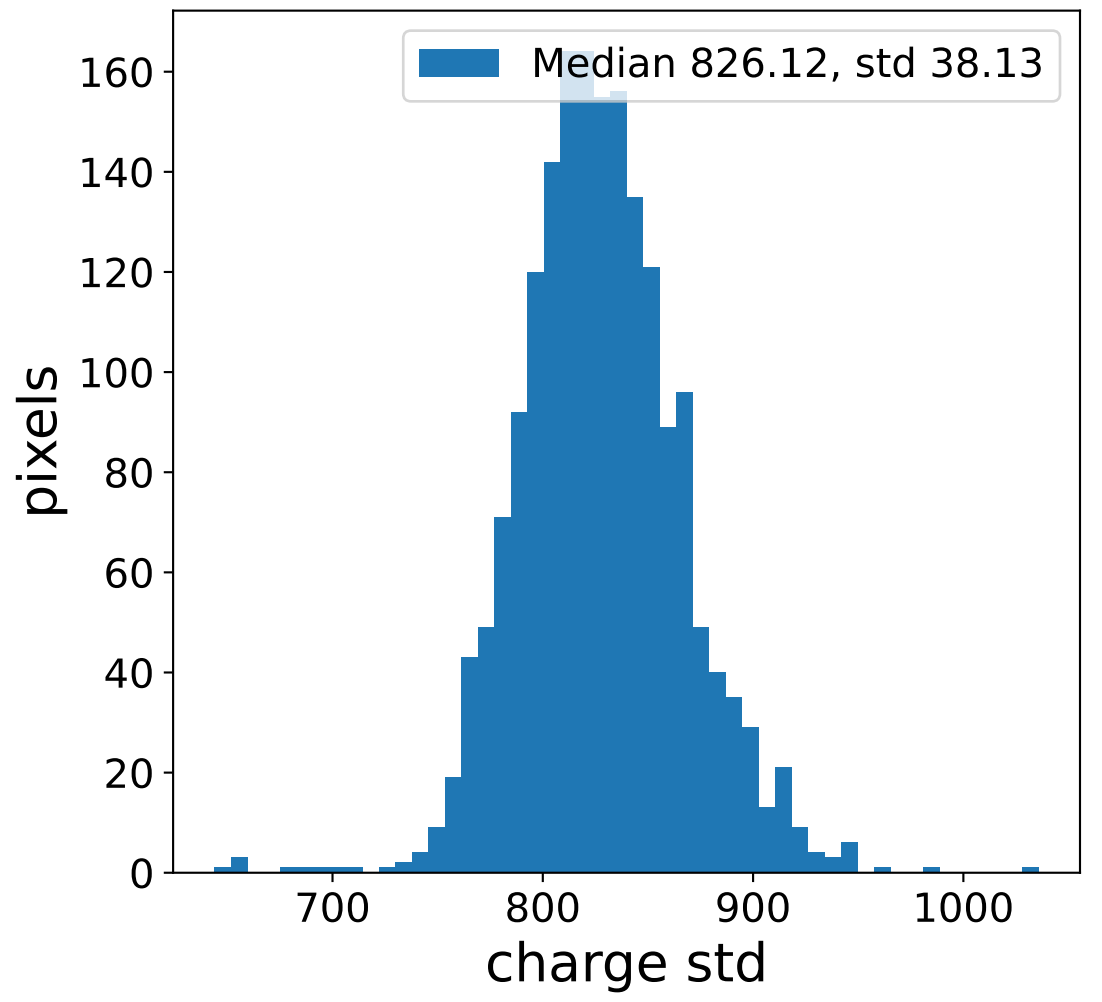
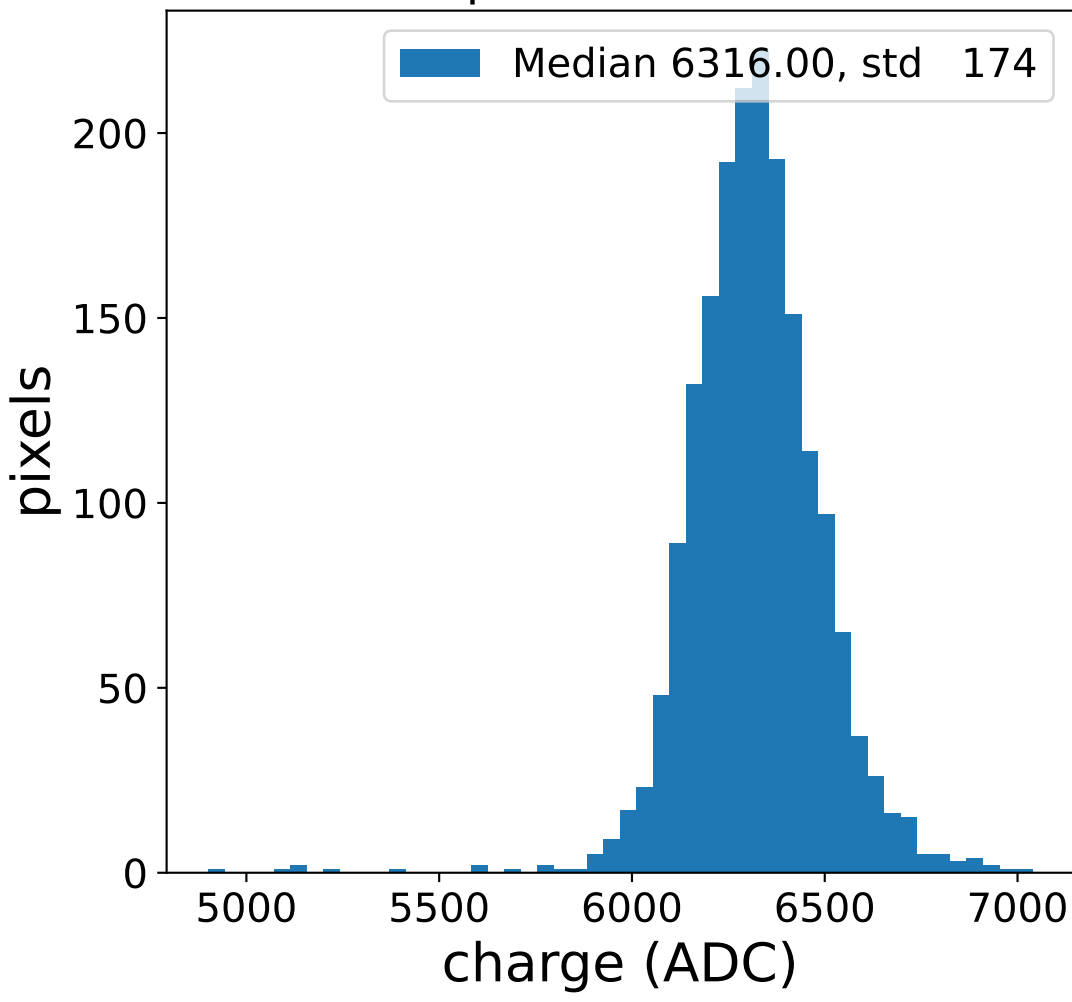


# Run 5502

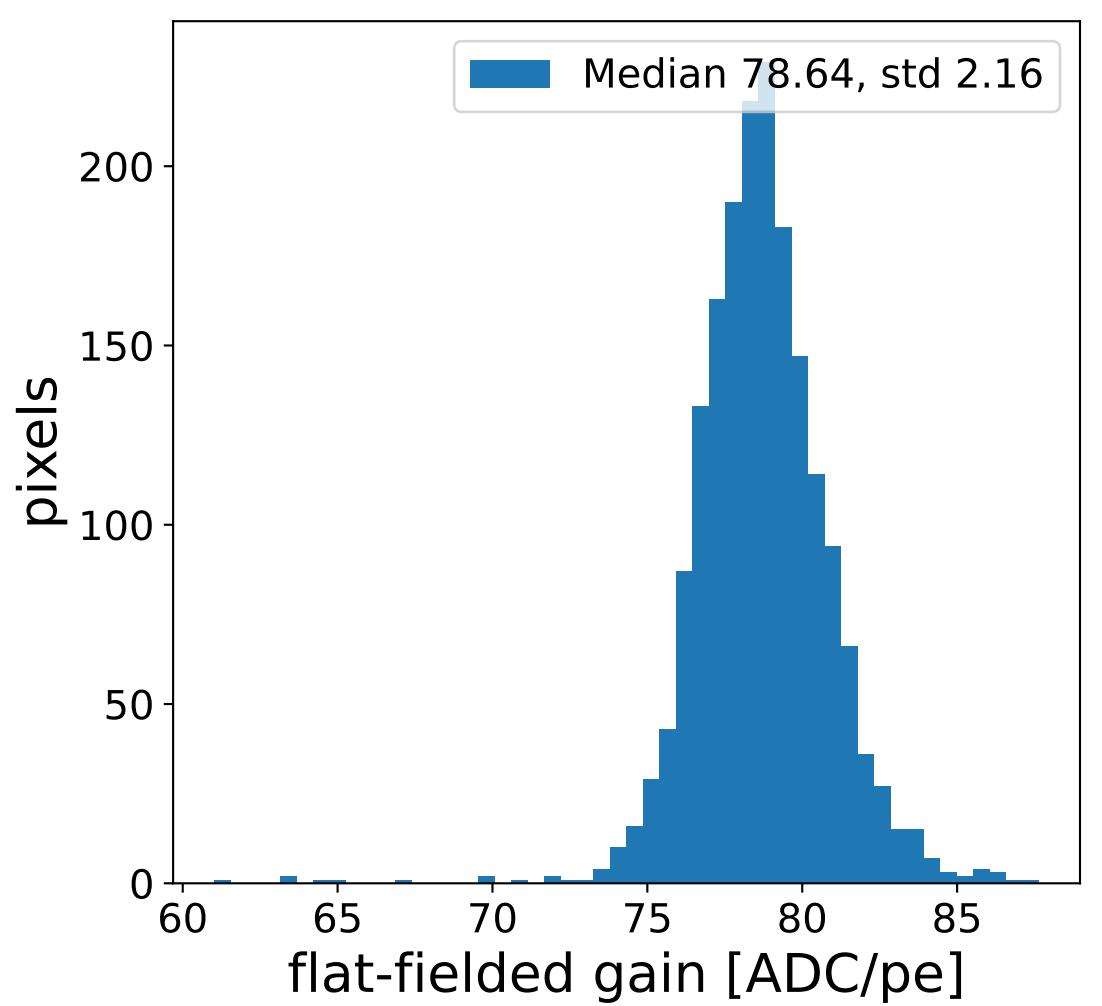
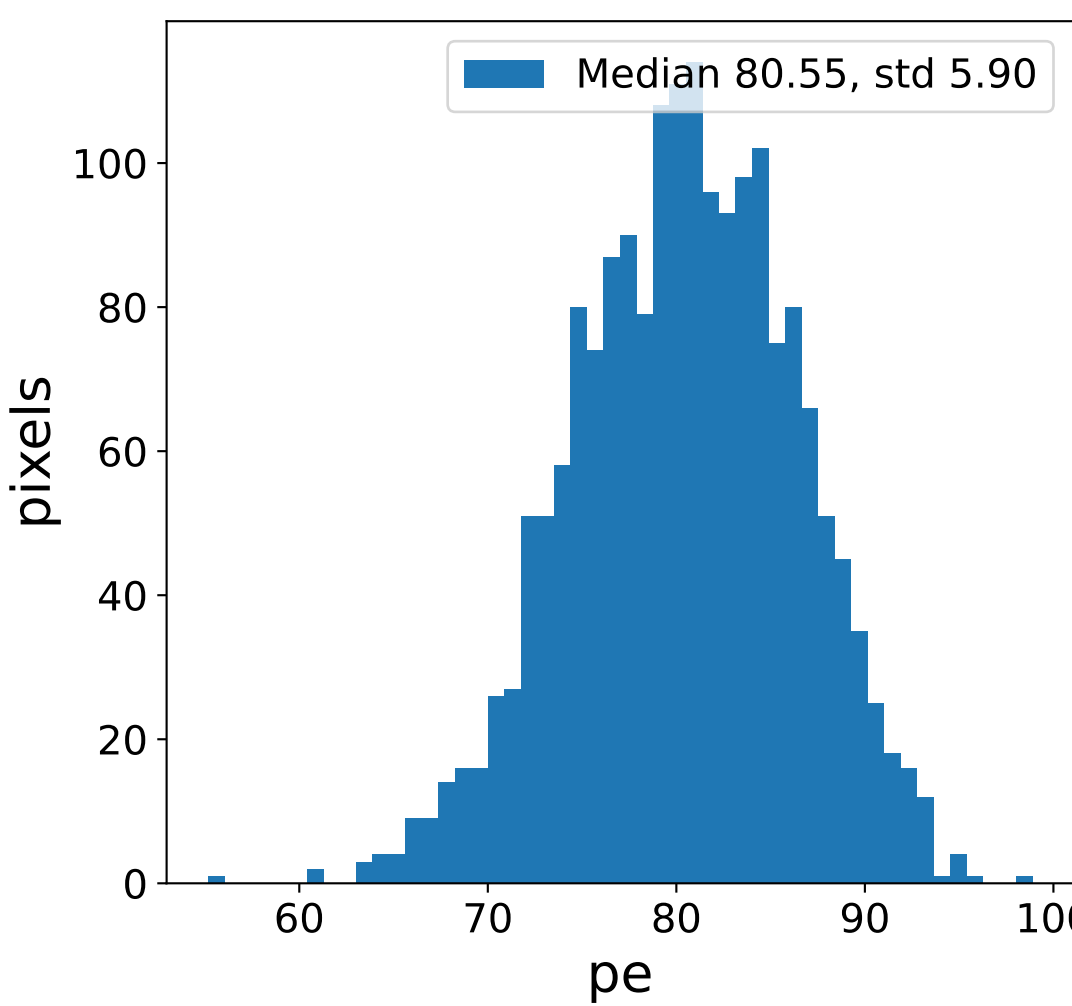
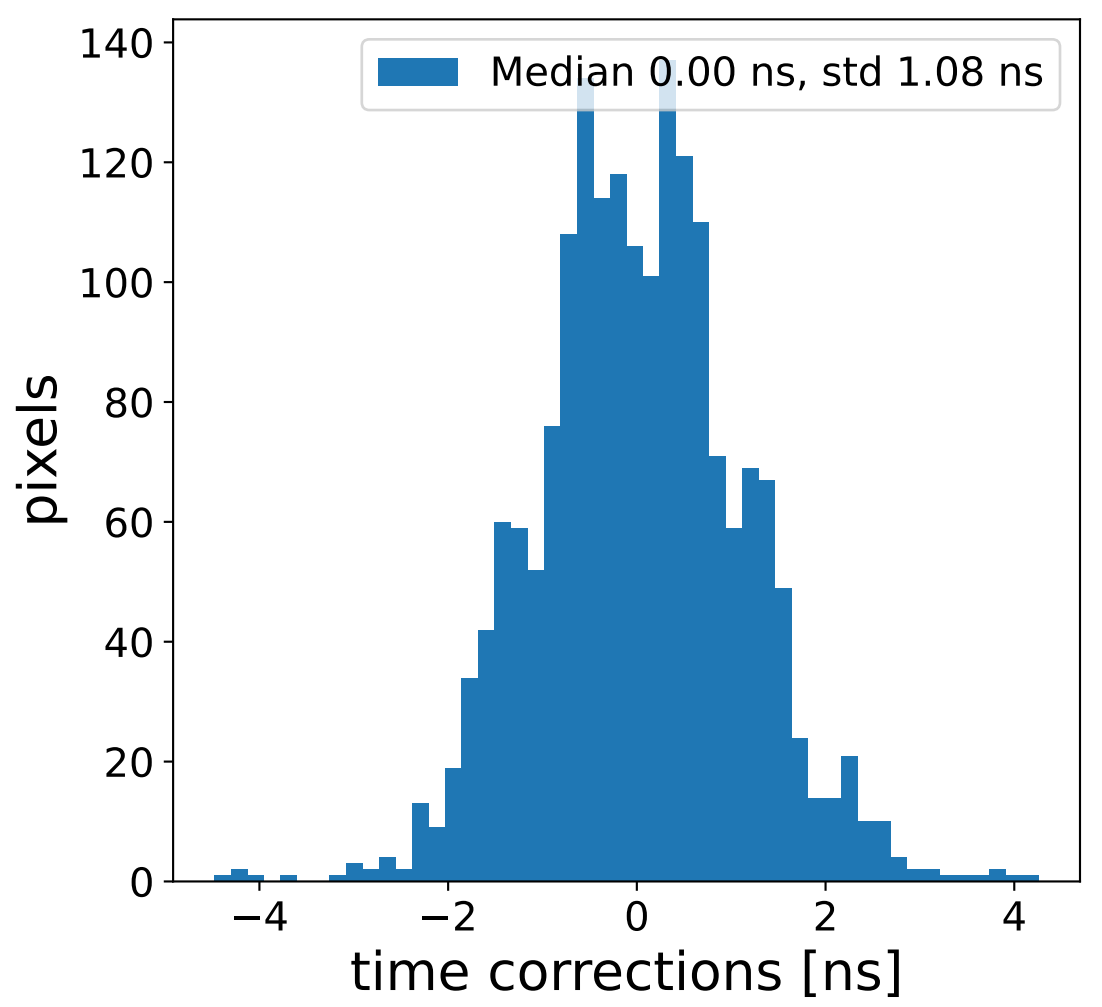
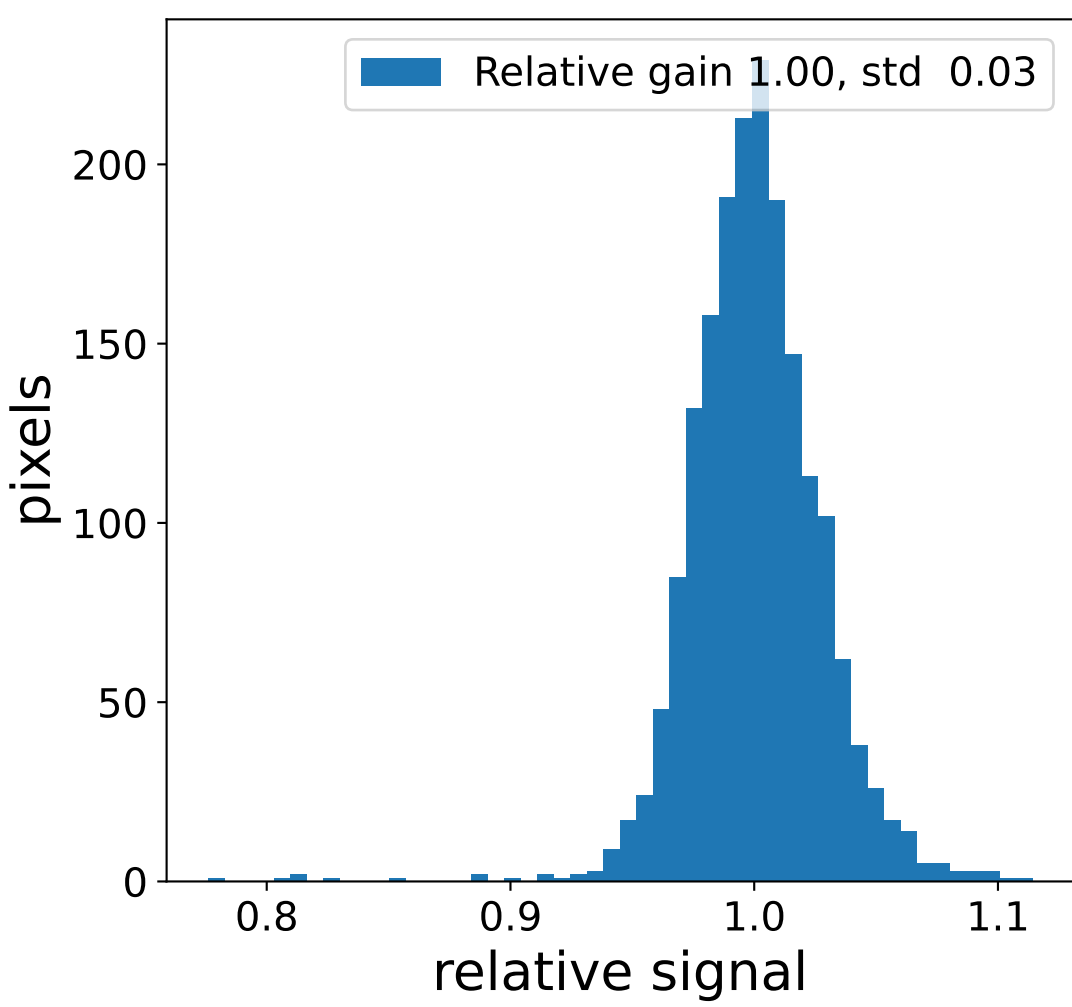
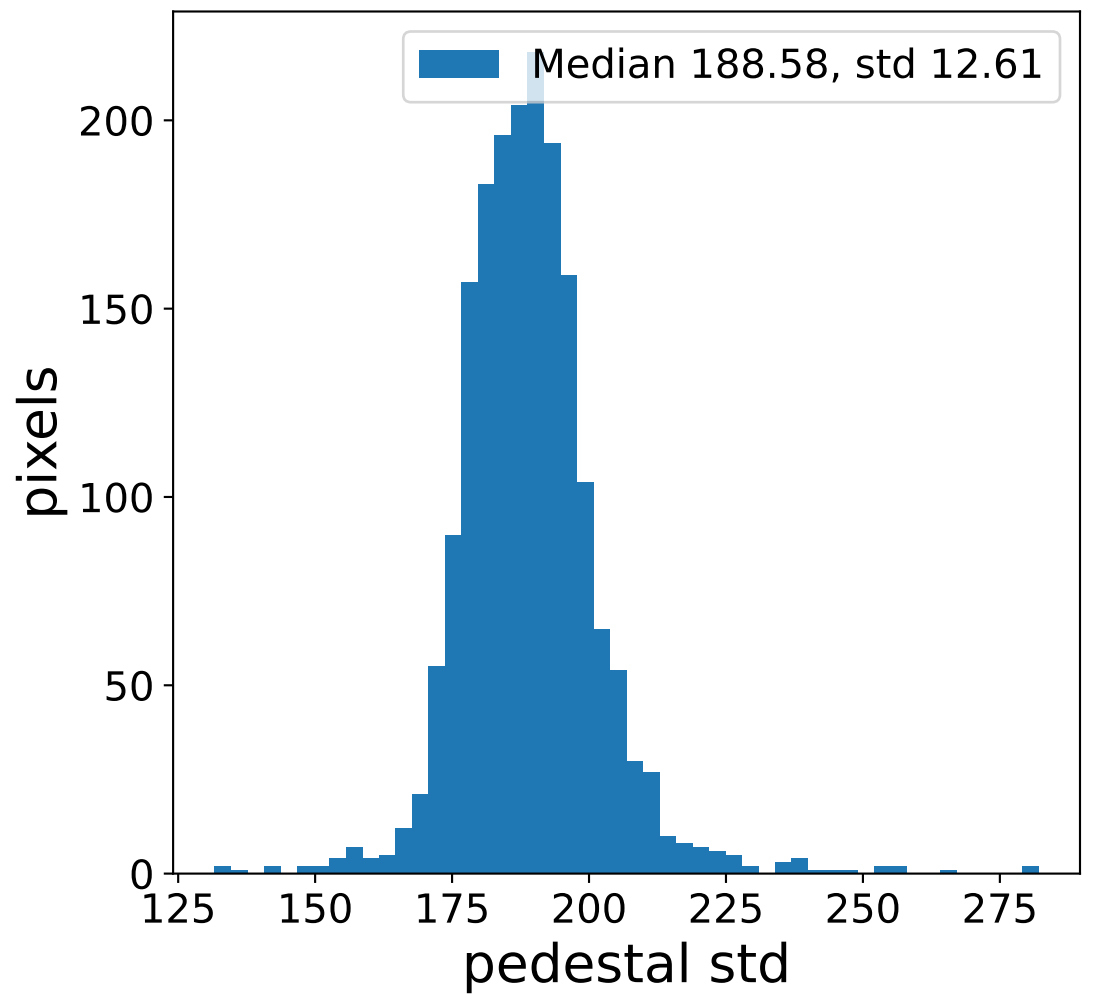
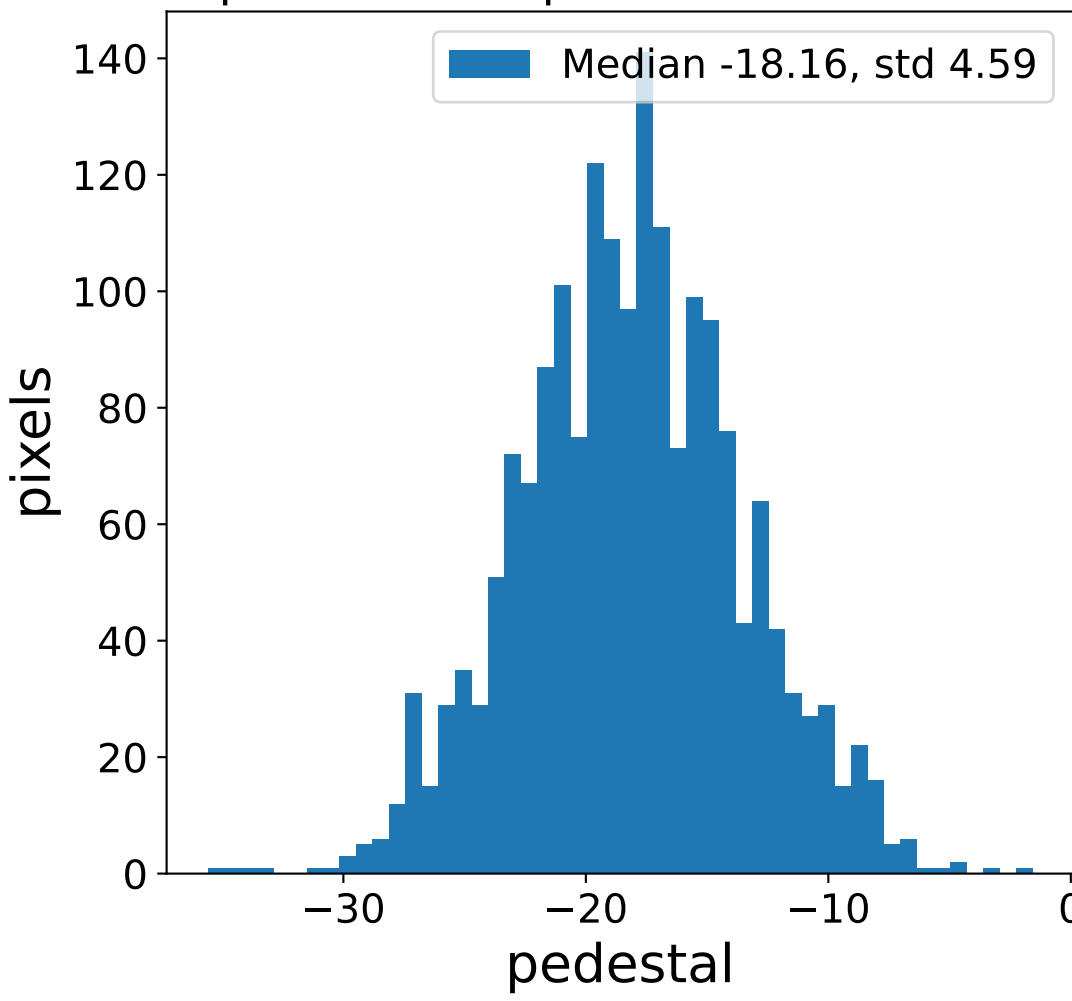


# Run 5502 channel: HG

## FF sample of 10000 events

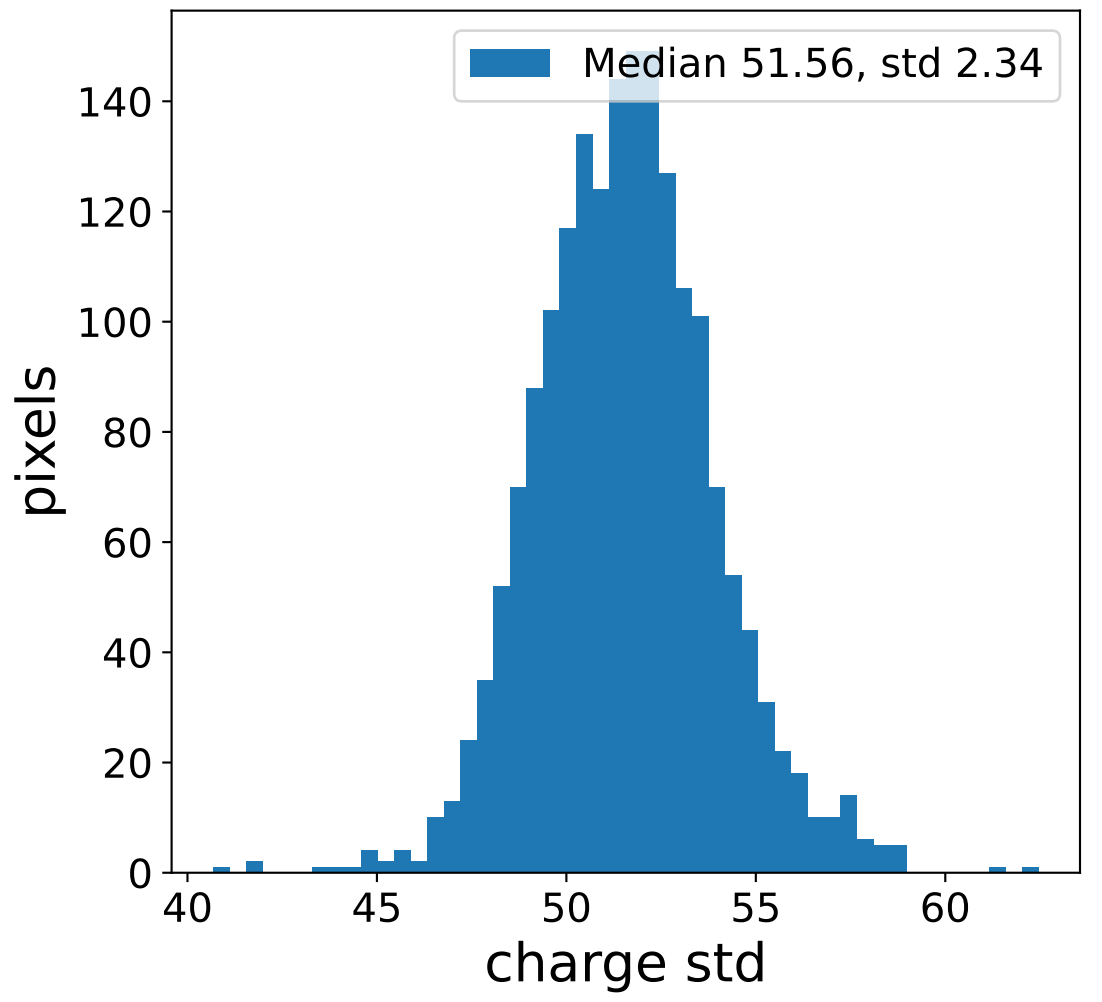
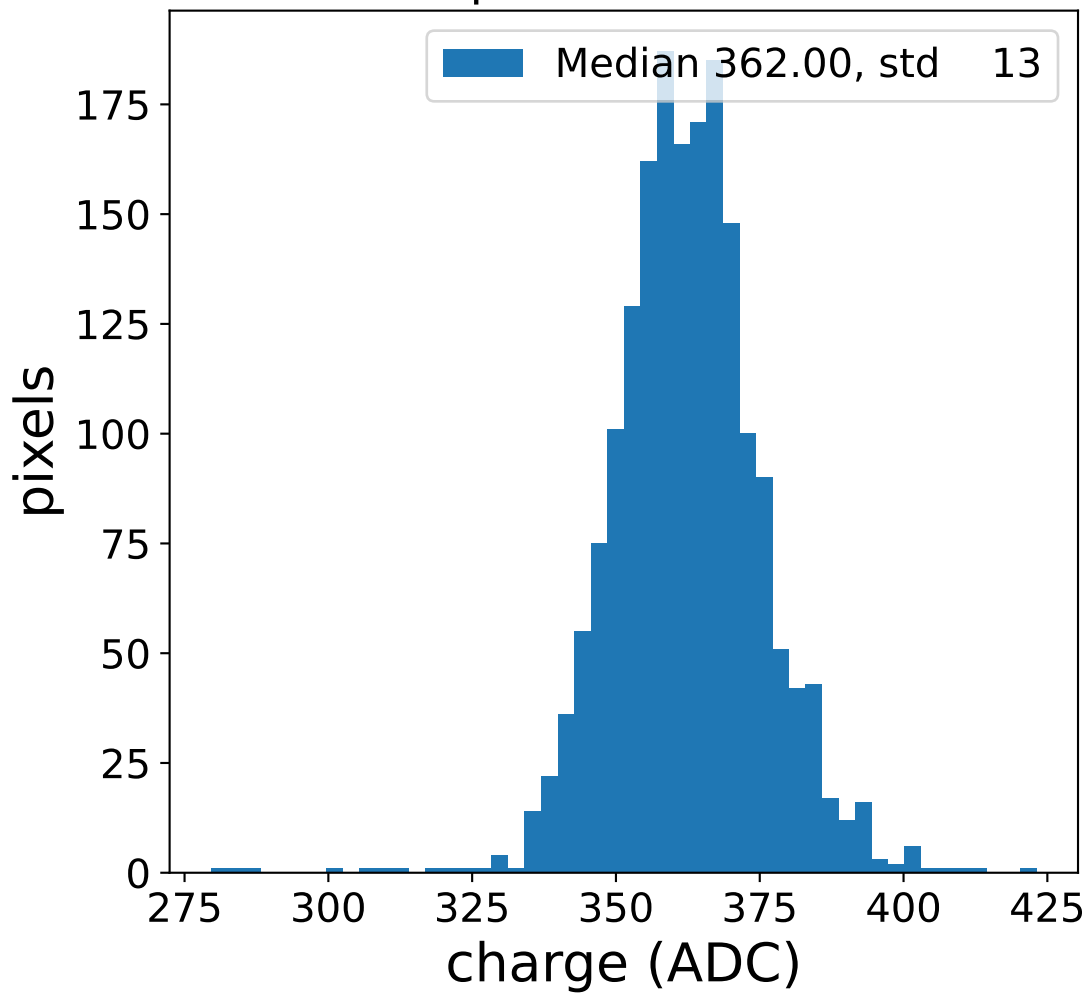


## pedestal sample of 10000 events



# Run 5502 channel: LG

## FF sample of 10000 events



## pedestal sample of 10000 events

