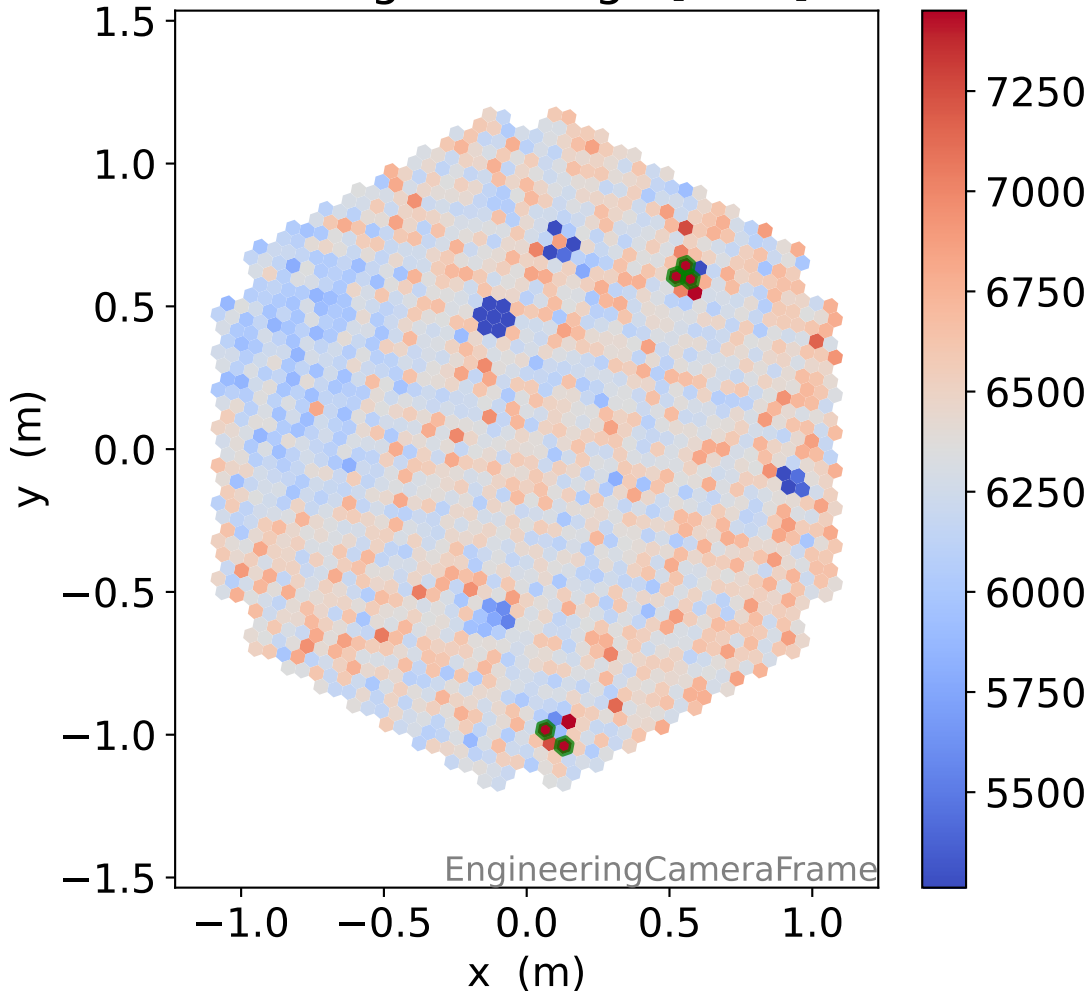
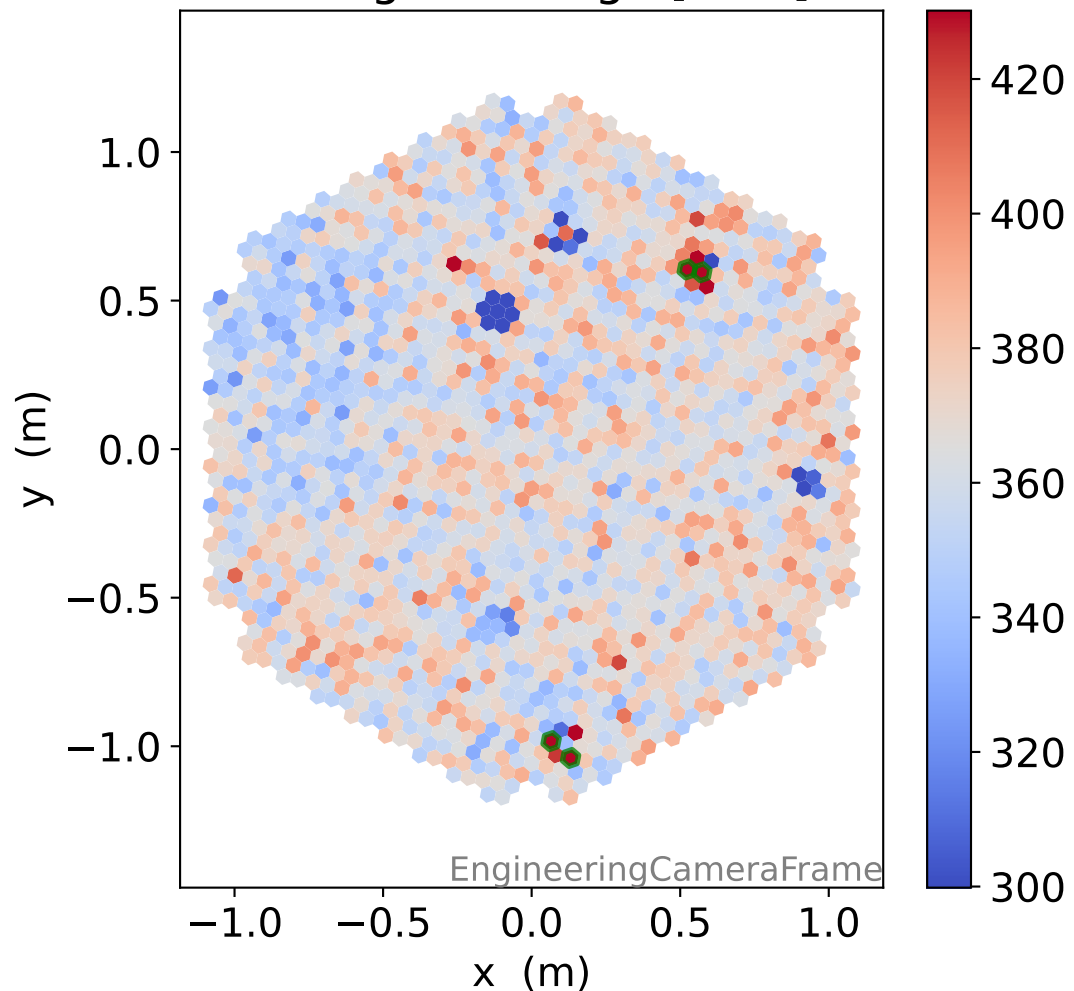


# Run 7045

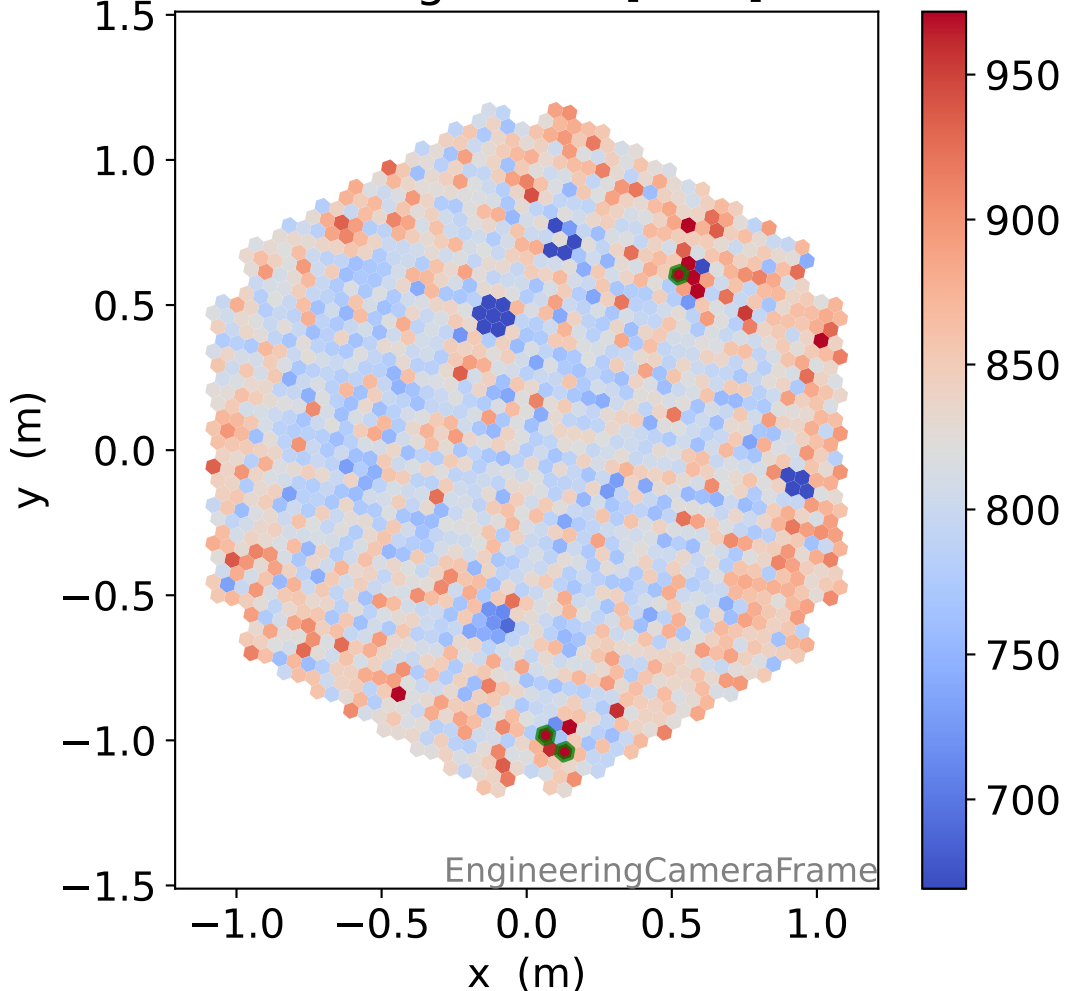
### HG signal charge [ADC]



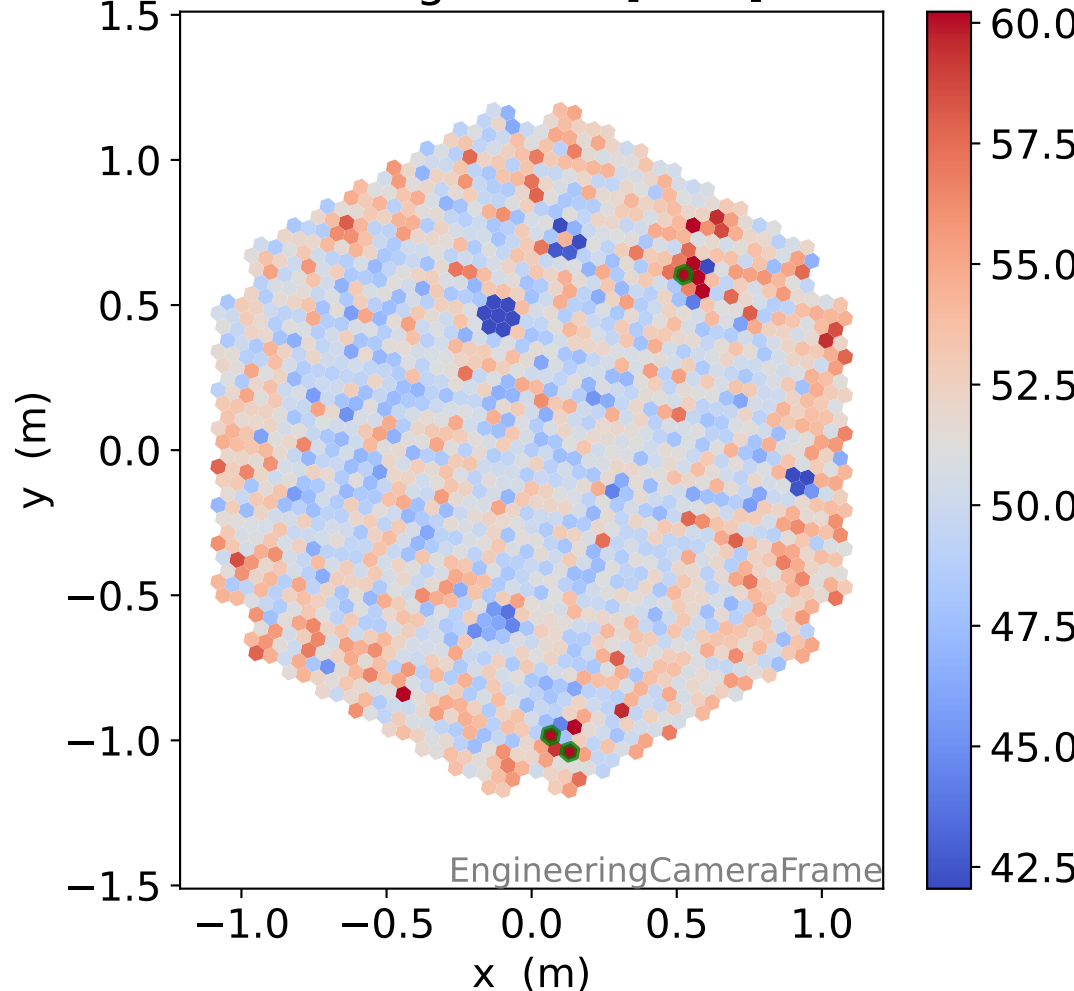
### LG signal charge [ADC]



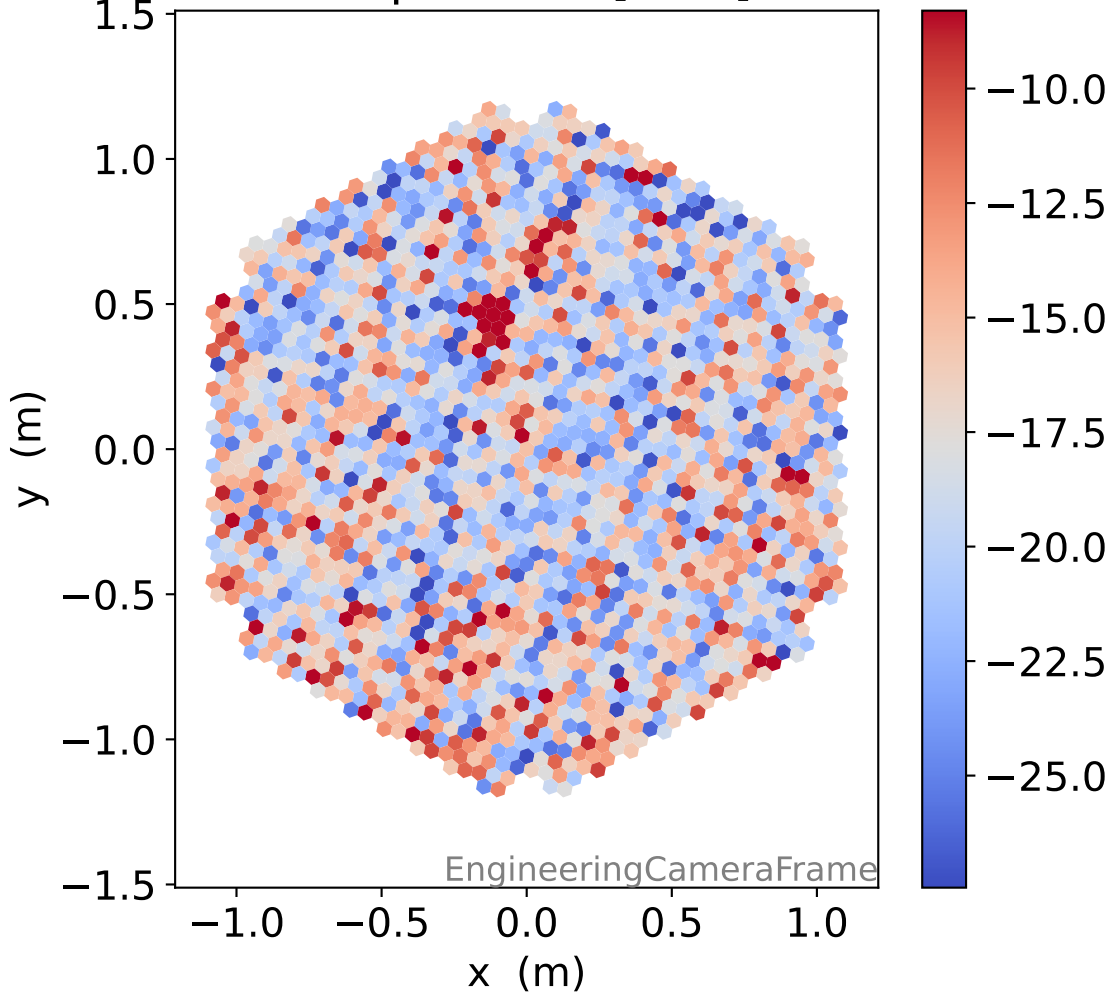
### HG signal std [ADC]



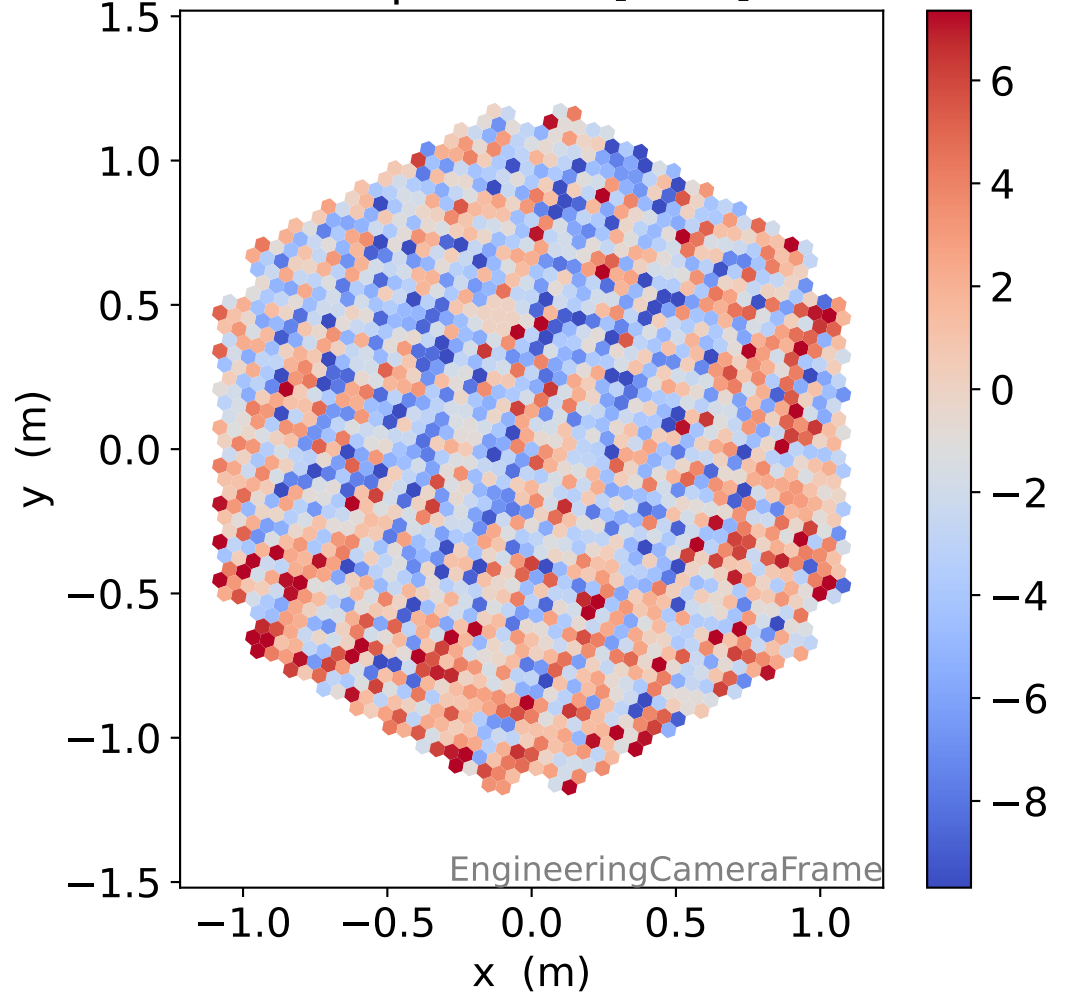
### LG signal std [ADC]



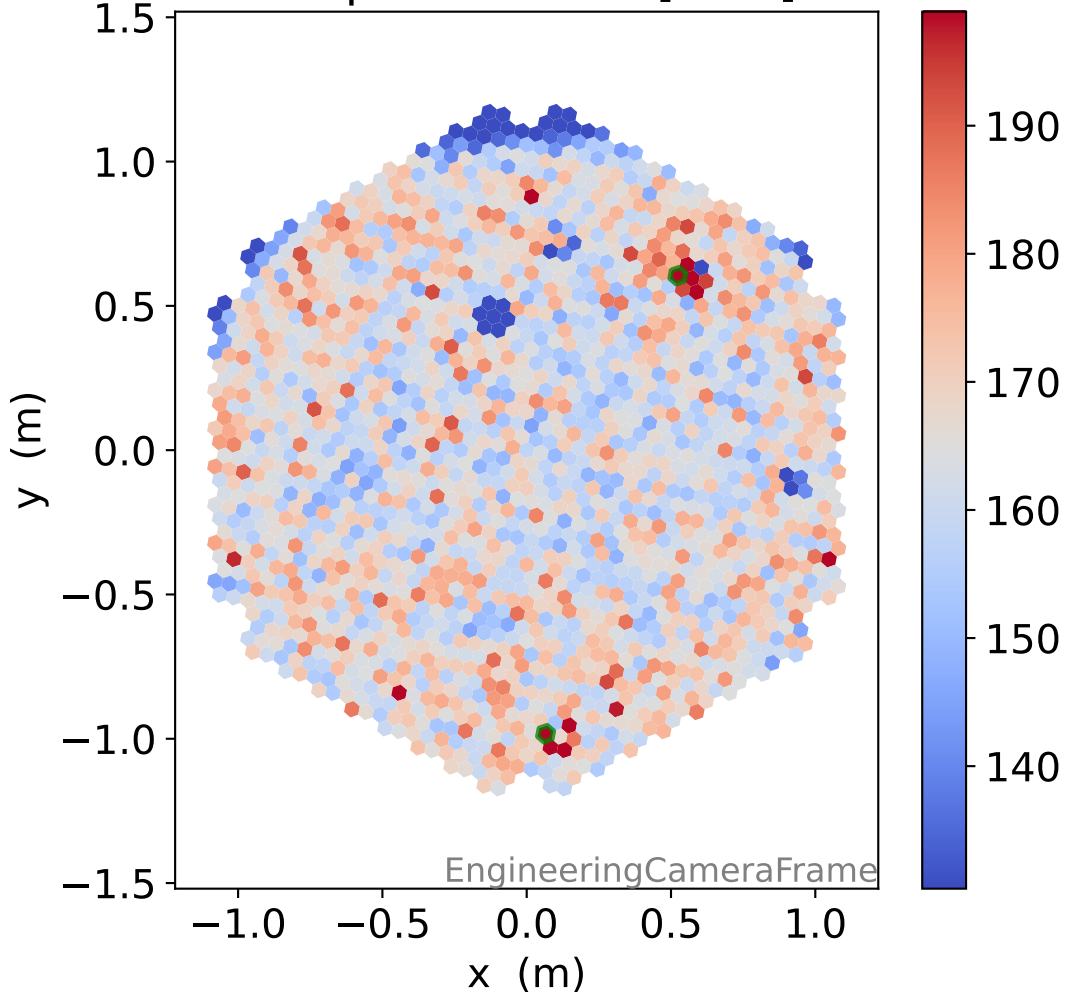
### HG pedestal [ADC]



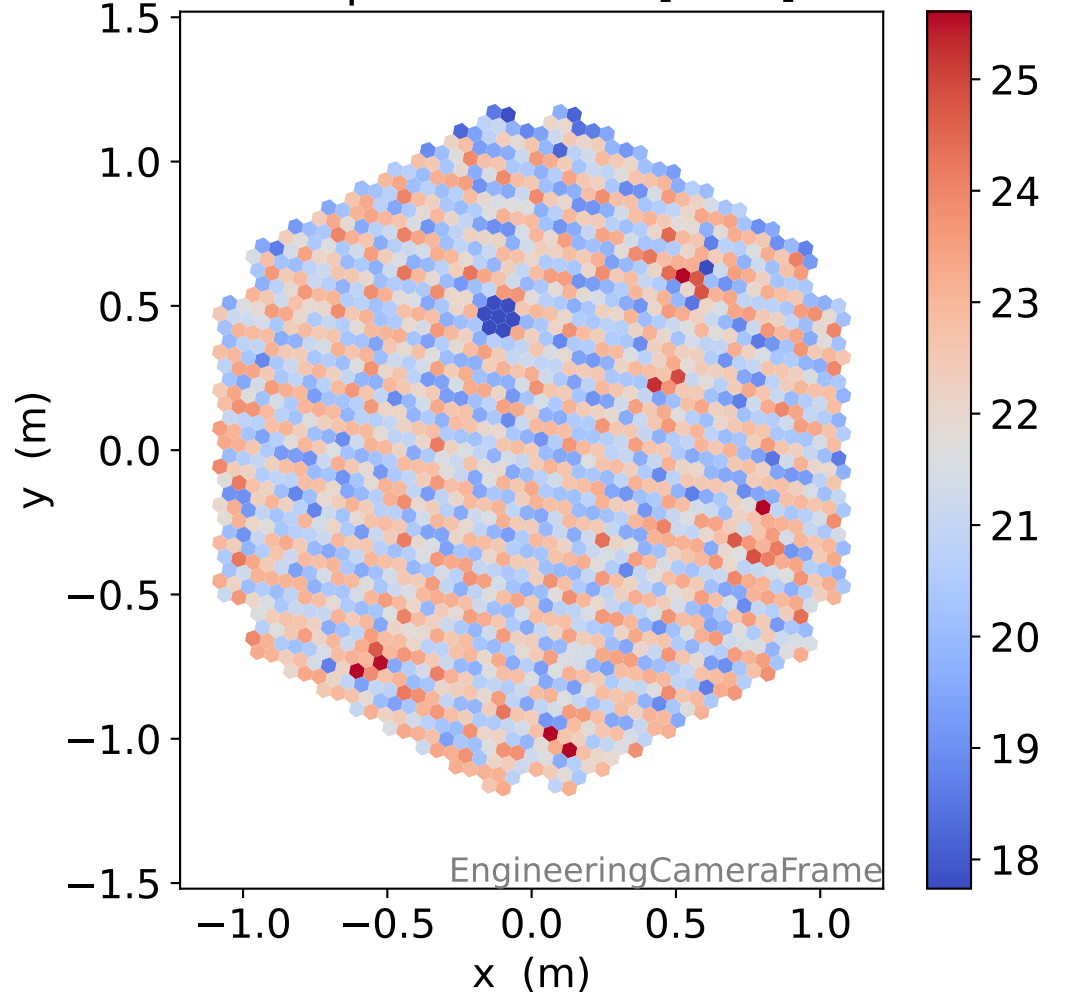
### LG pedestal [ADC]



### HG pedestal std [ADC]

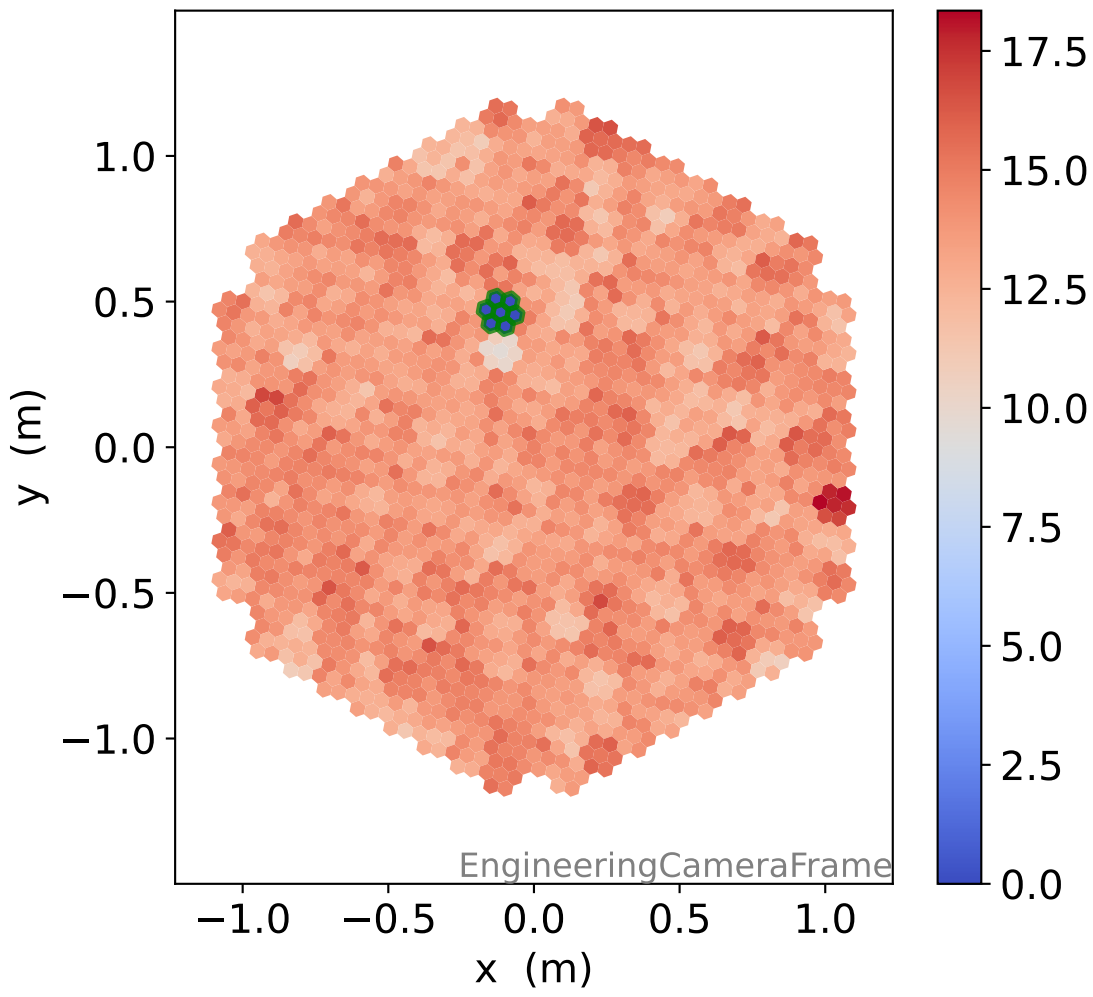


### LG pedestal std [ADC]

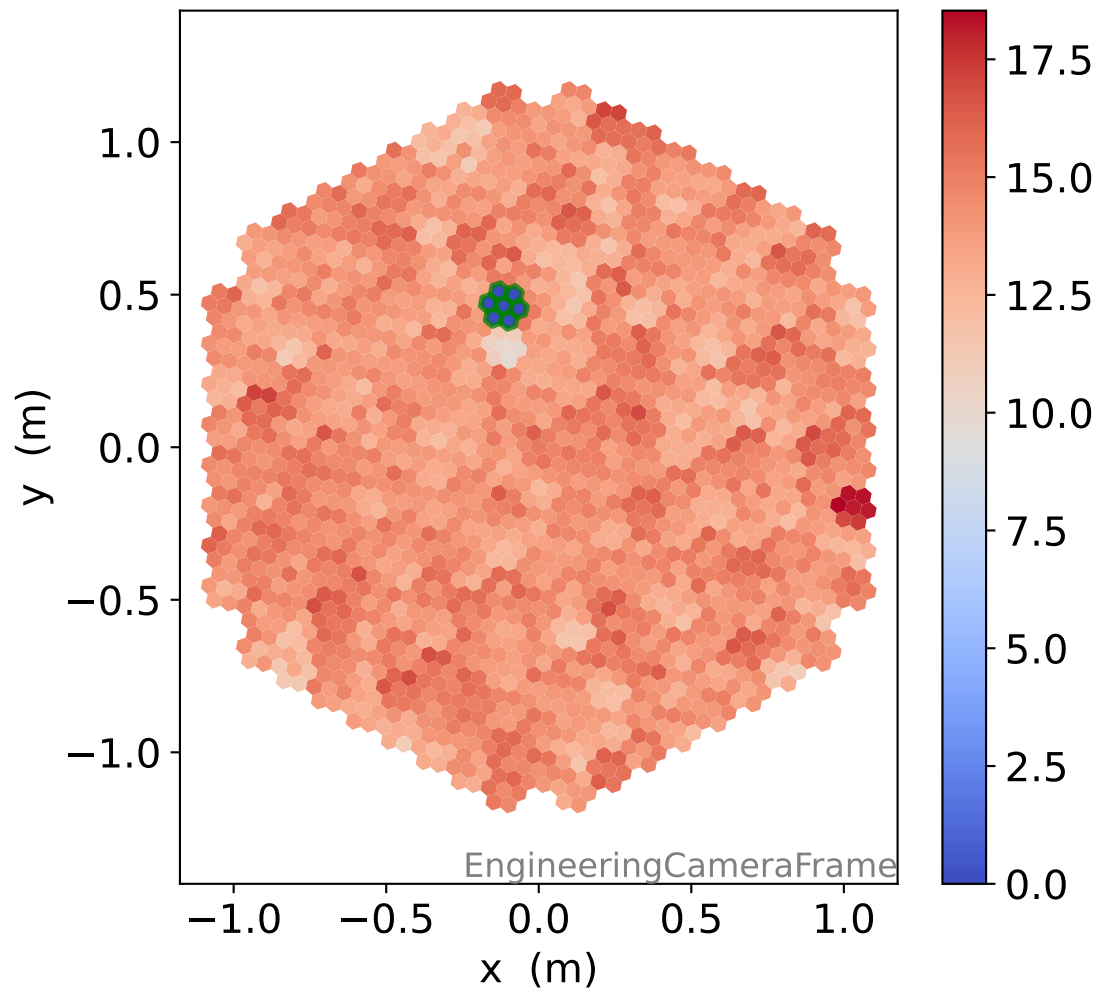


# Run 7045

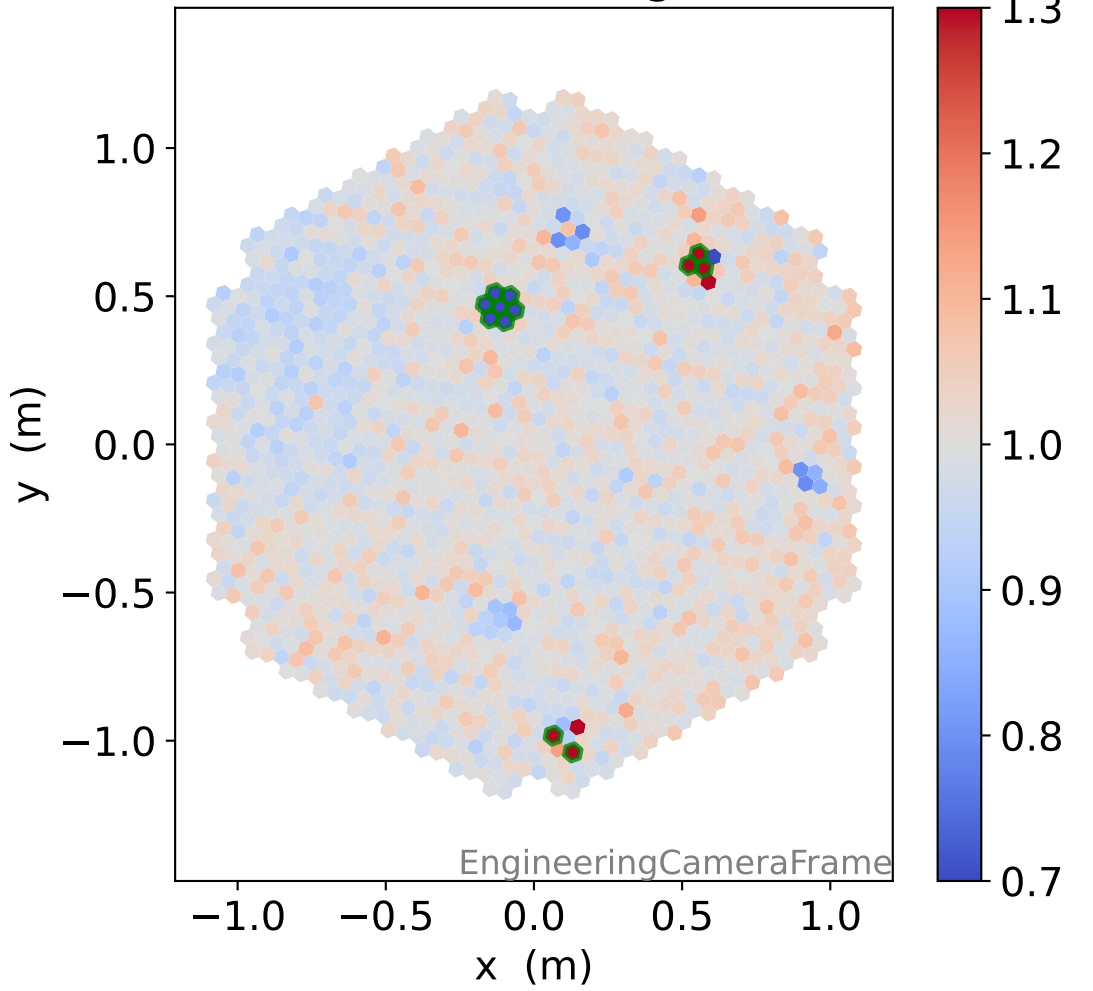
### HG time



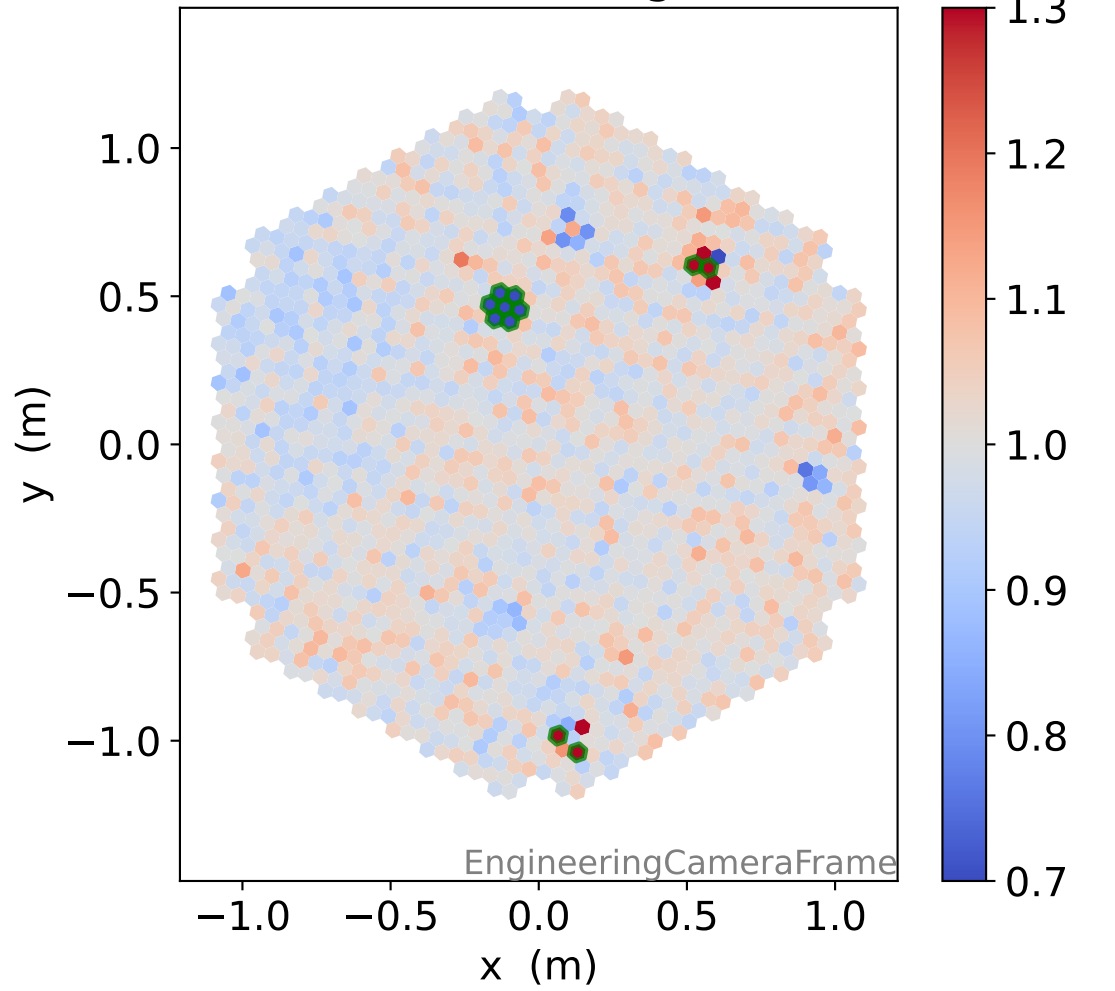
### LG time



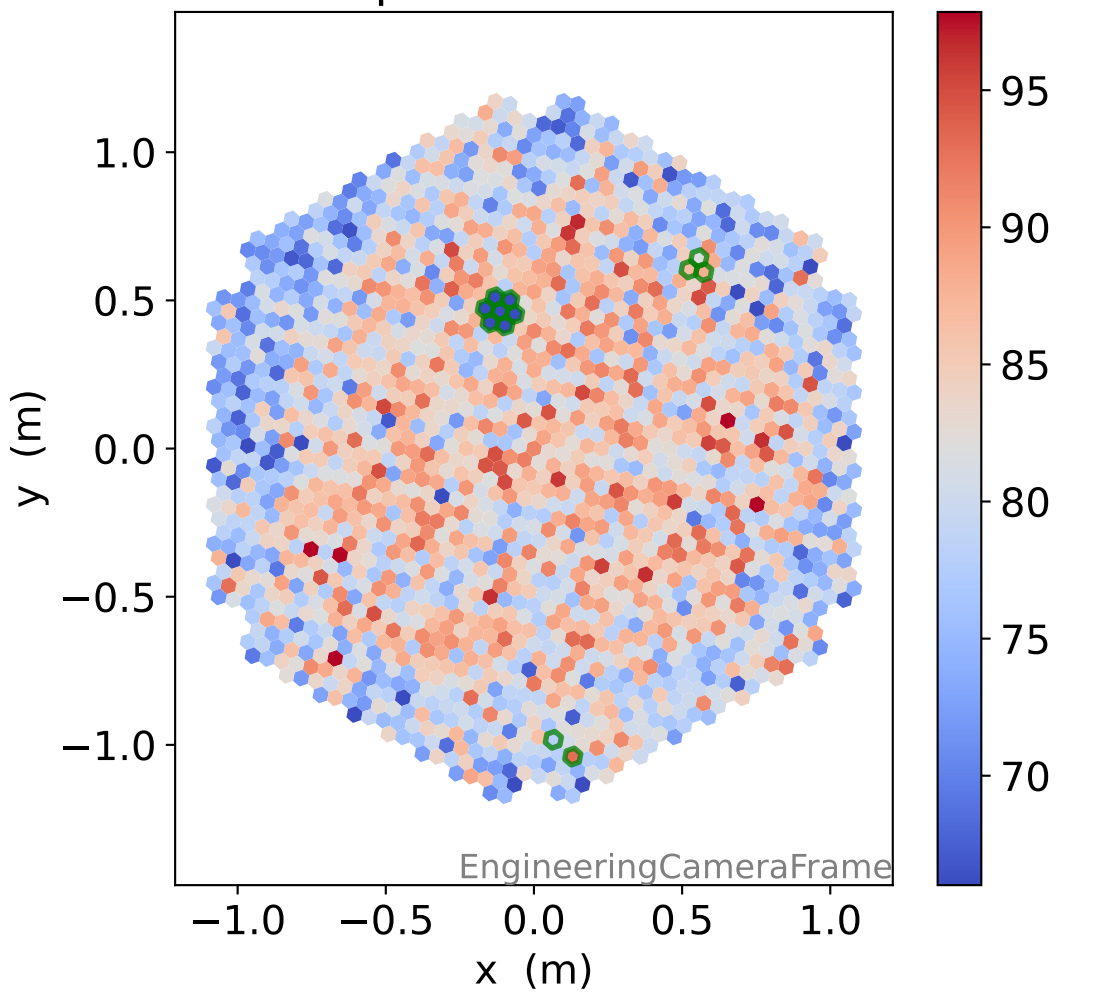
### HG relative signal



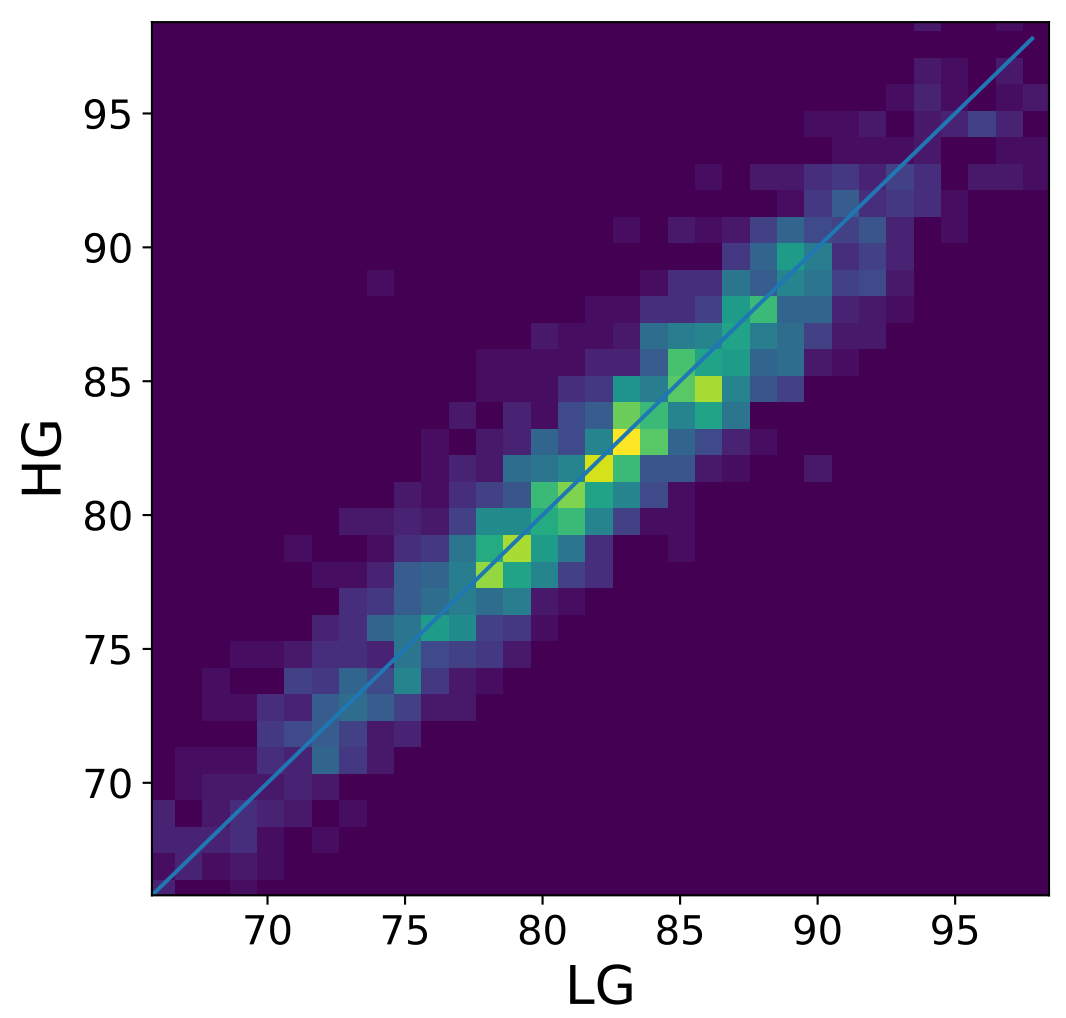
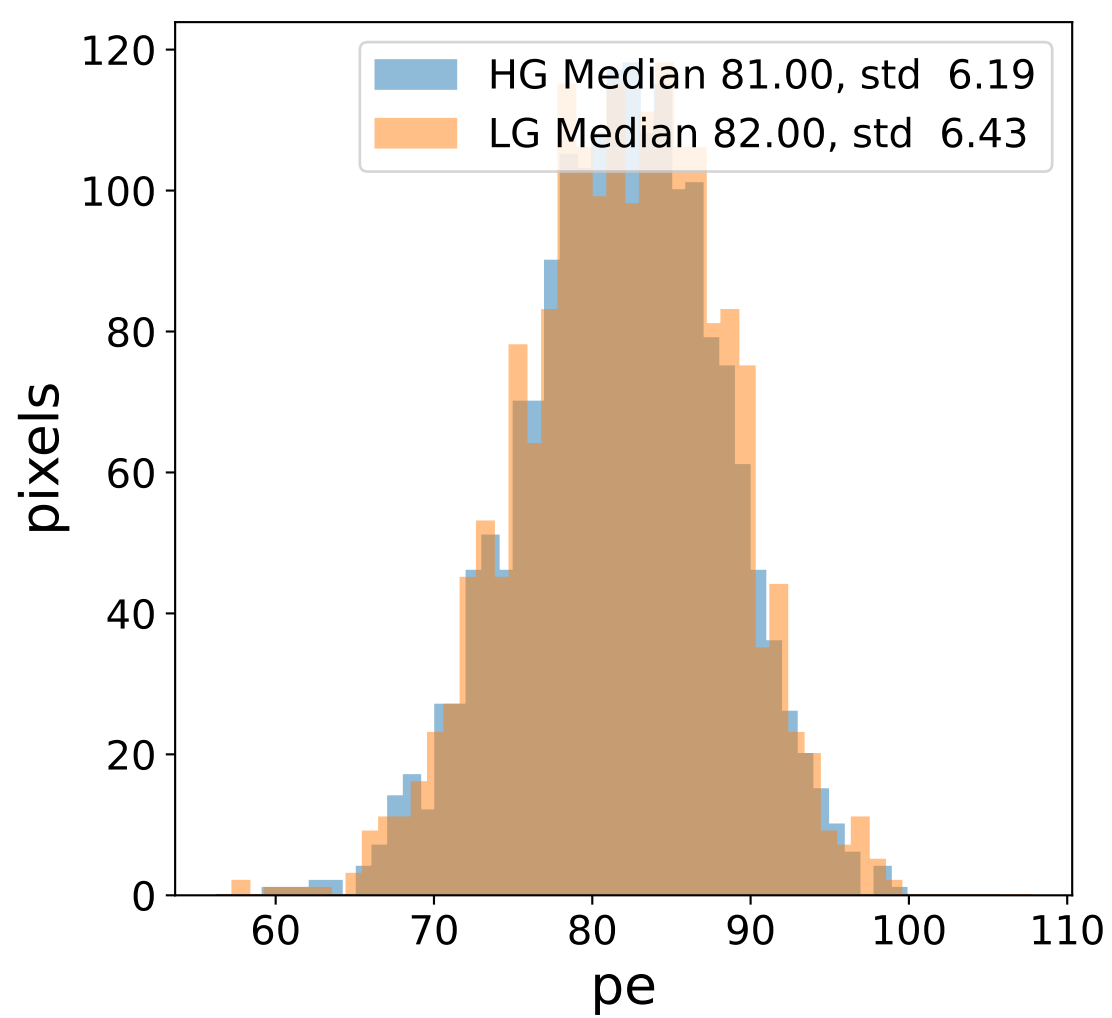
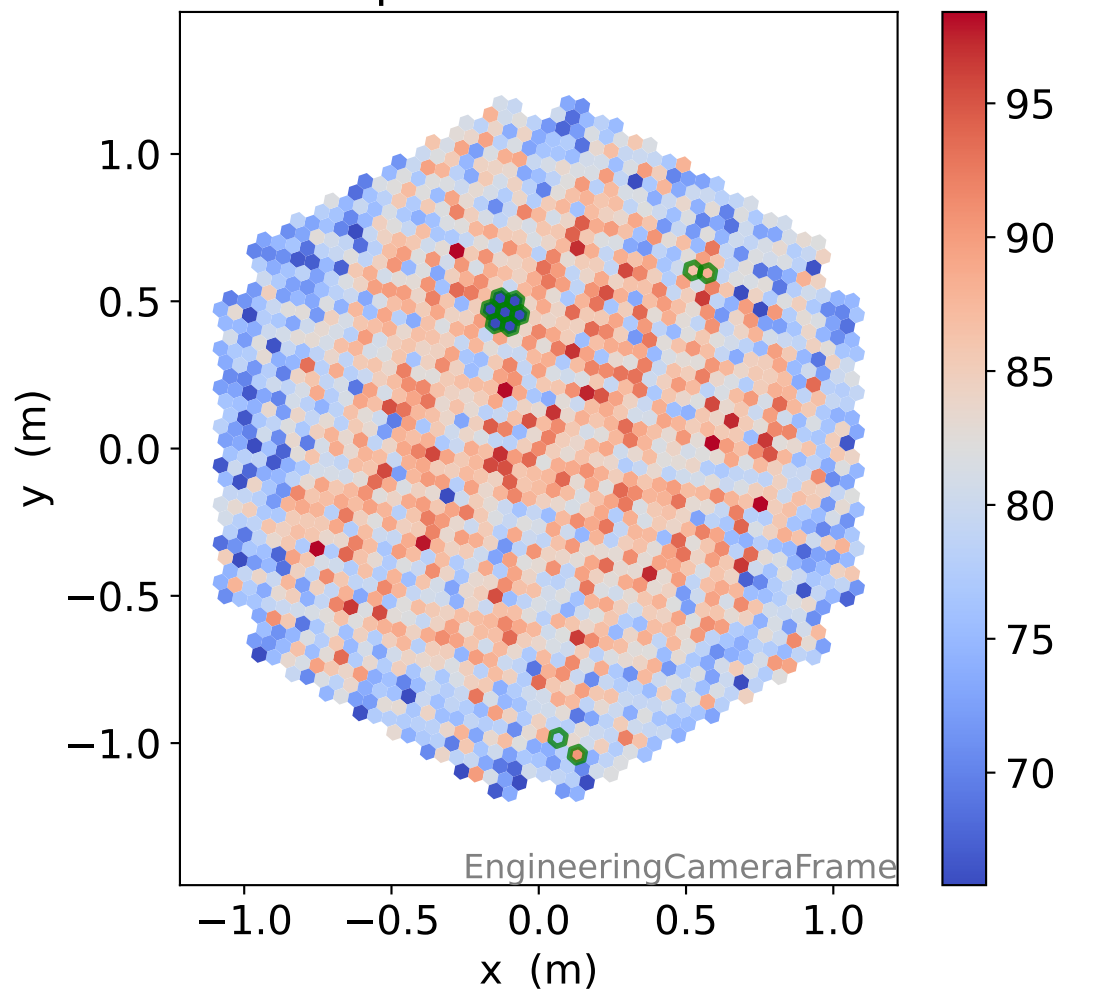
### LG relative signal



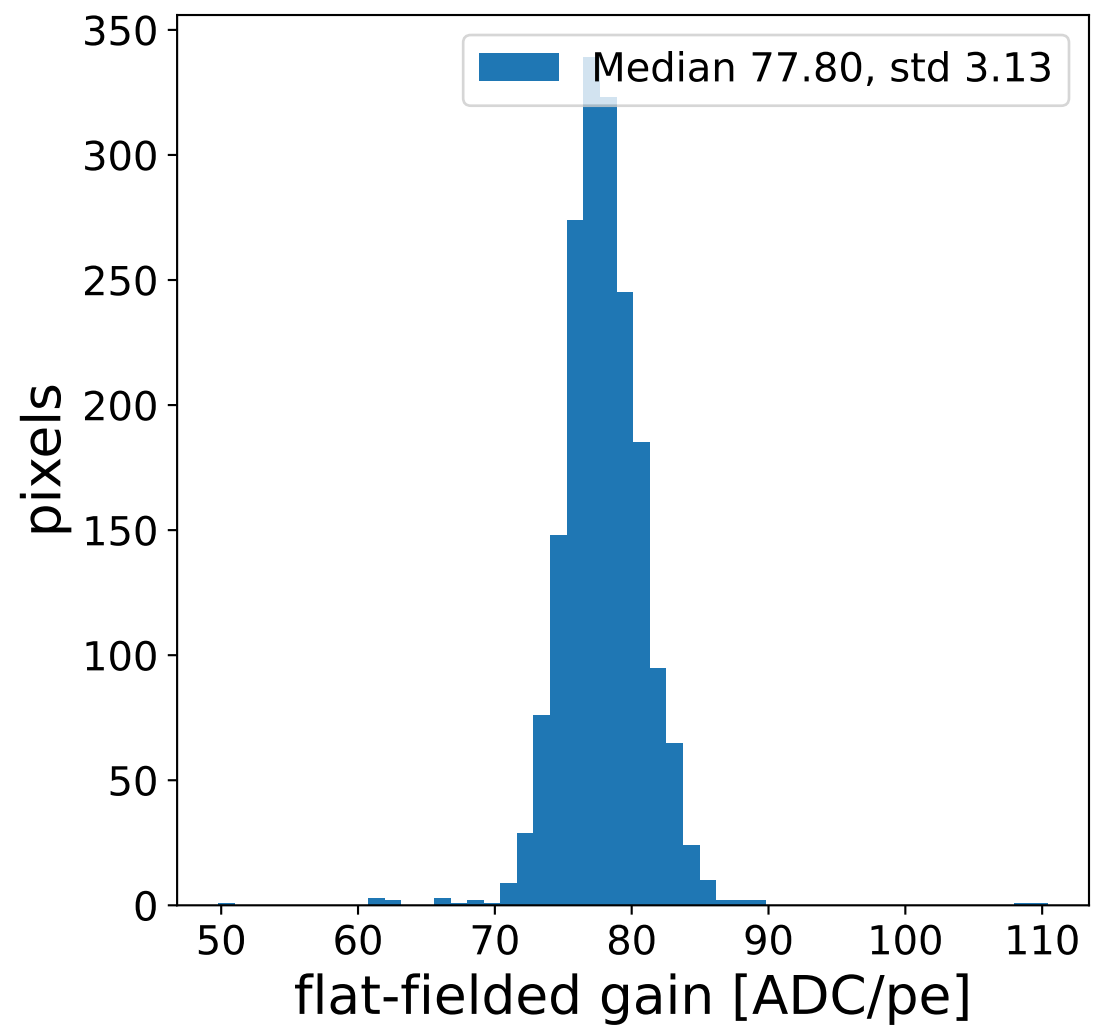
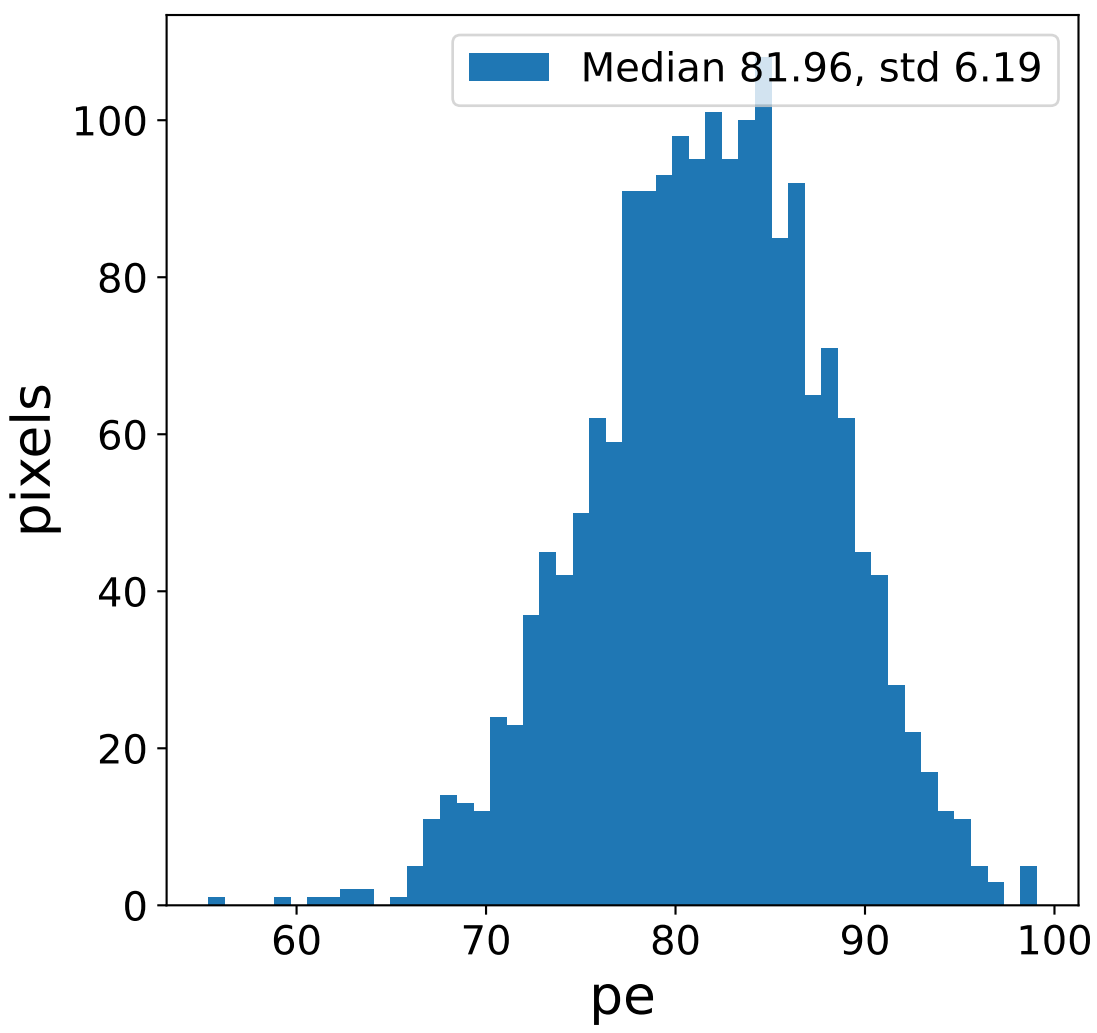
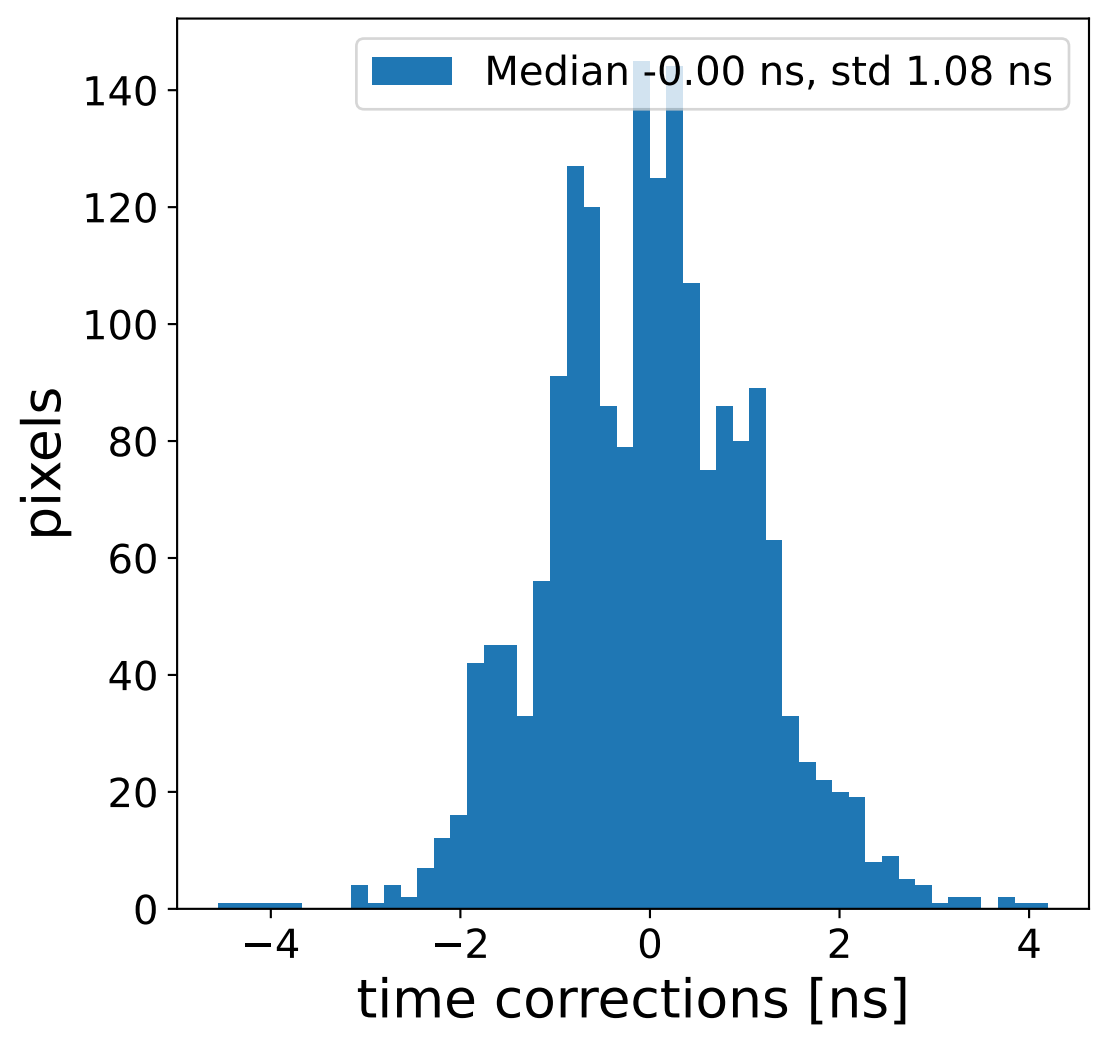
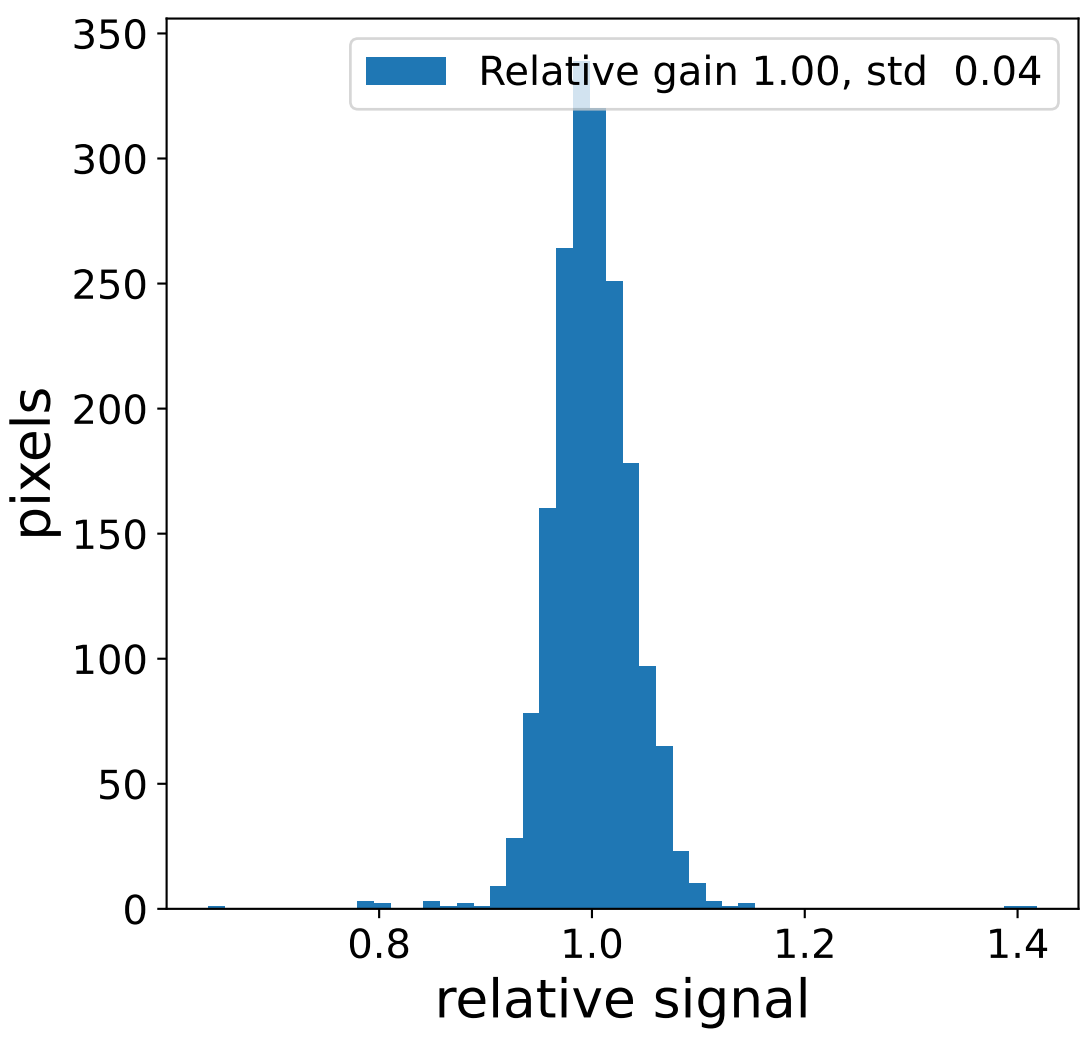
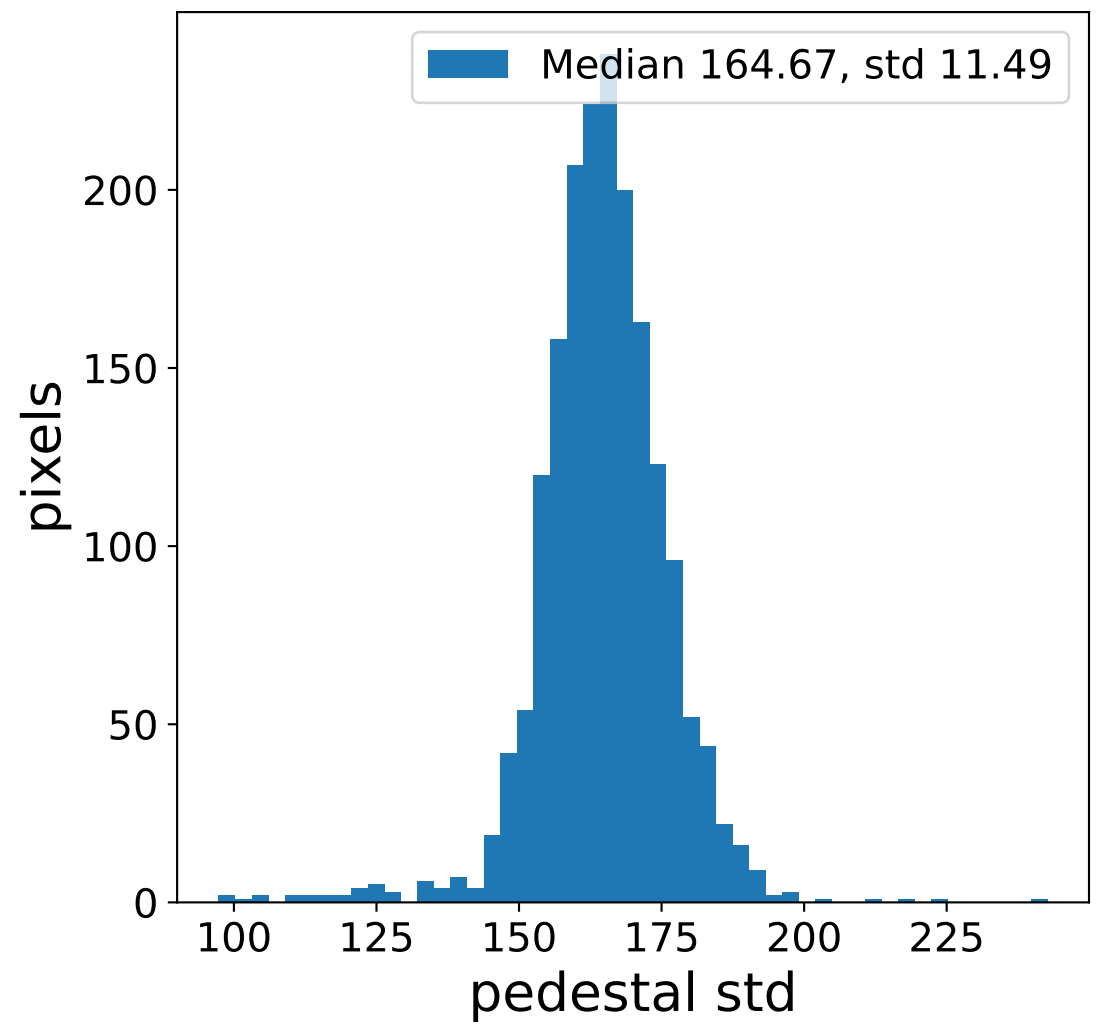
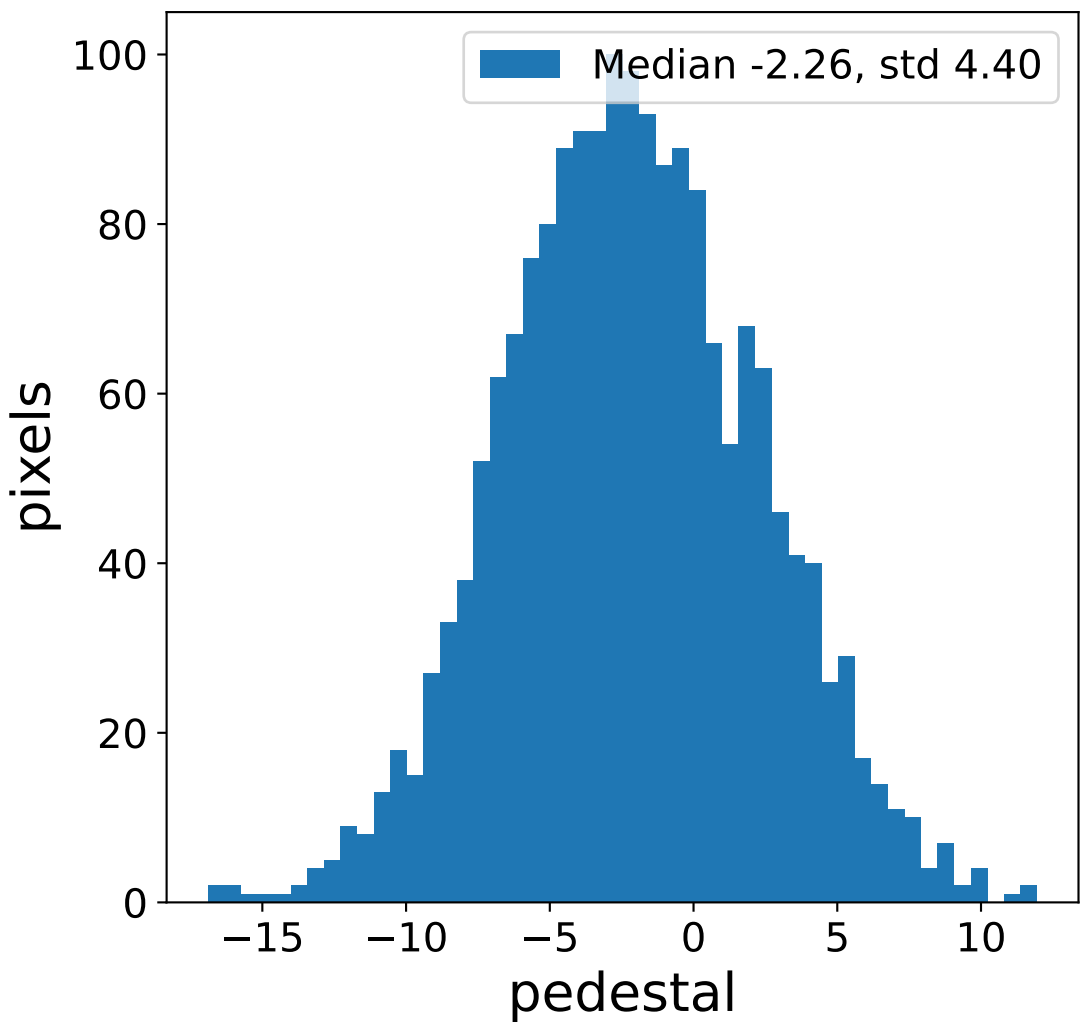
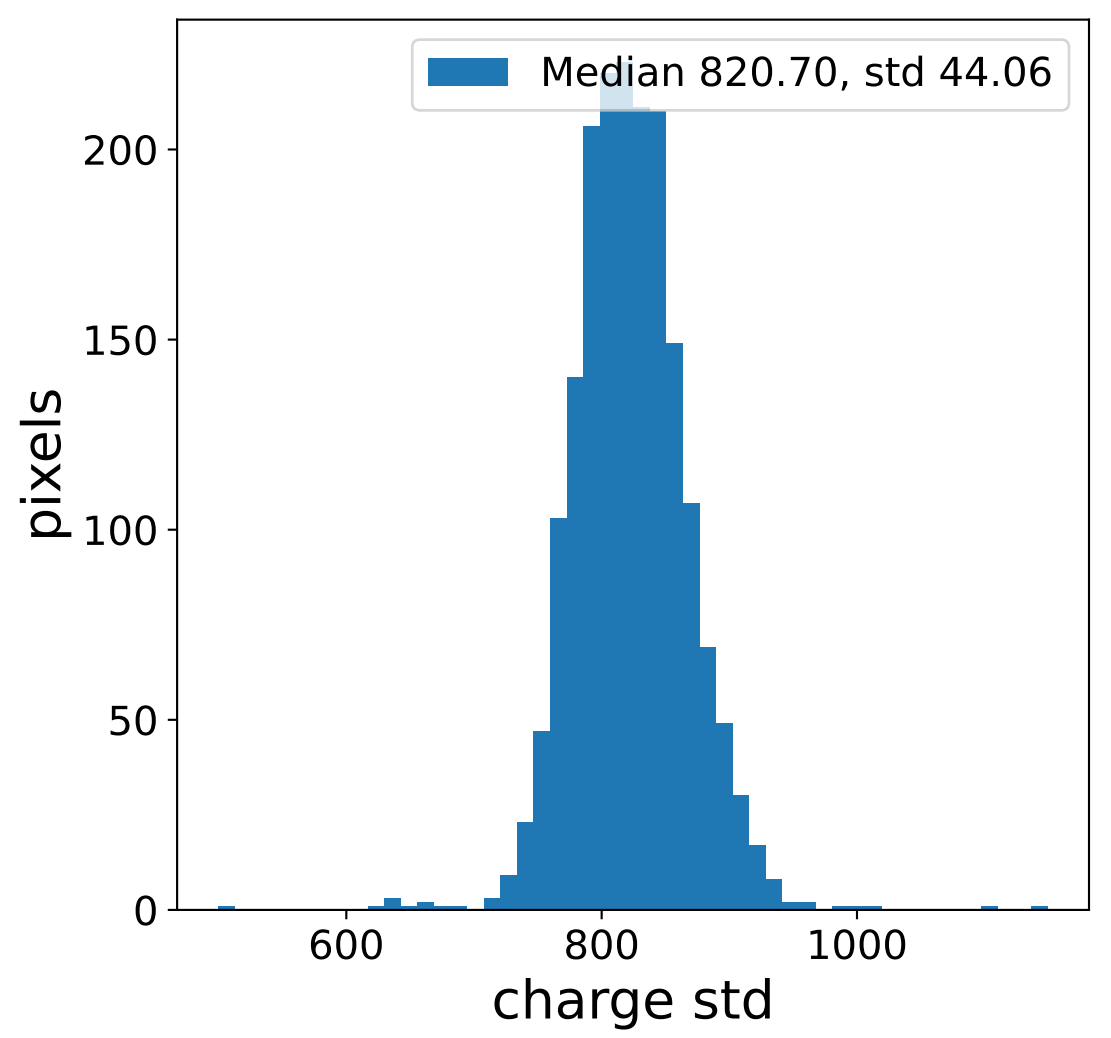
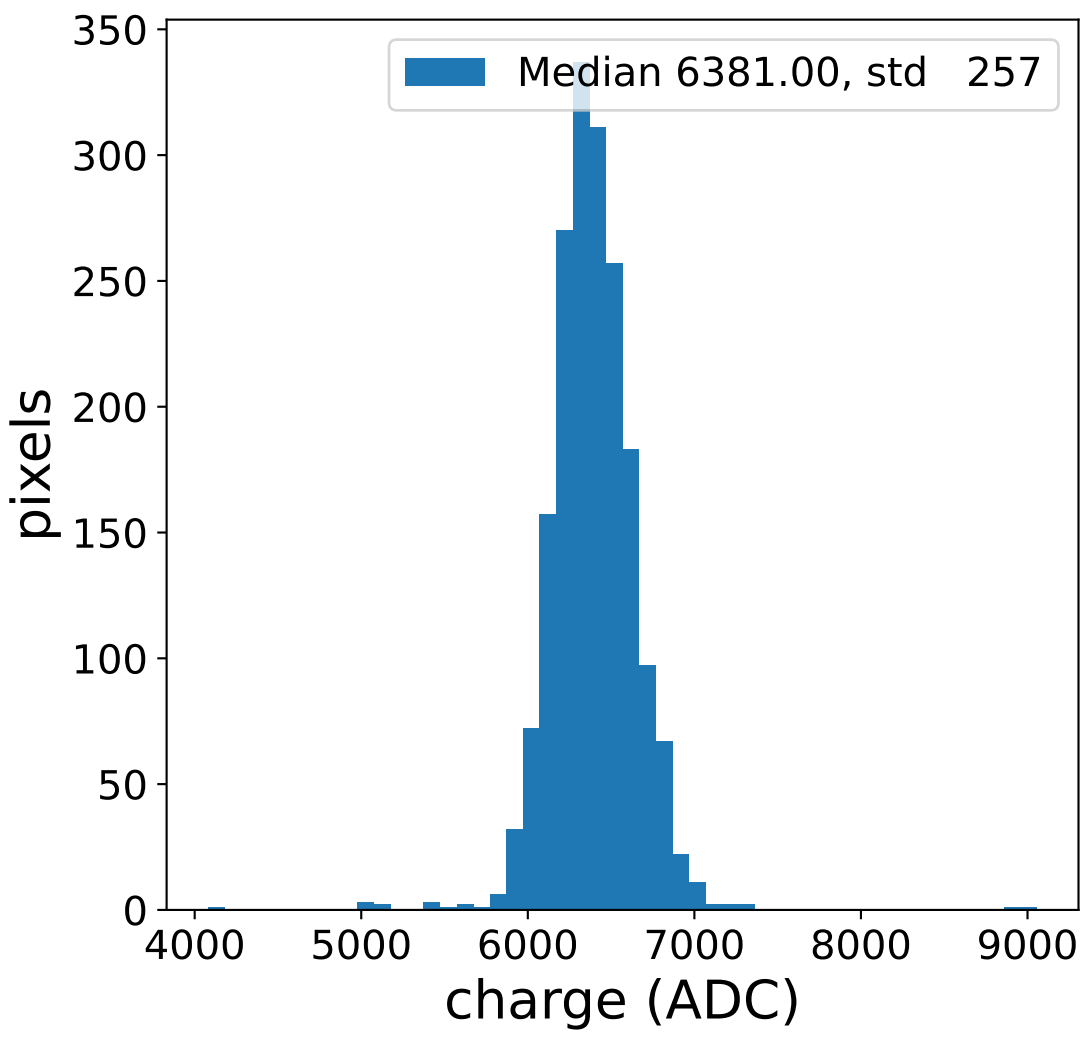
### HG photon-electrons



### LG photon-electrons



# Run 7045 channel: HG



# Run 7045 channel: LG

