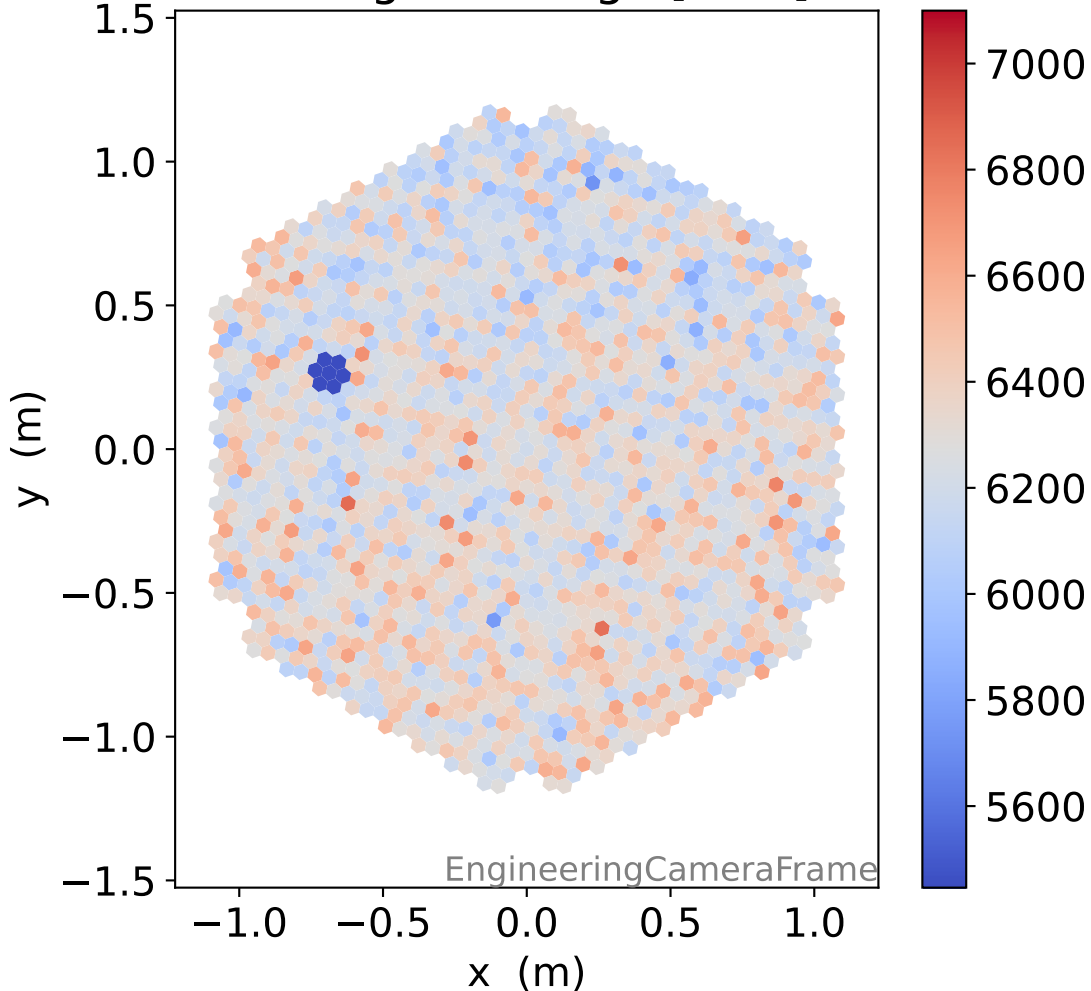
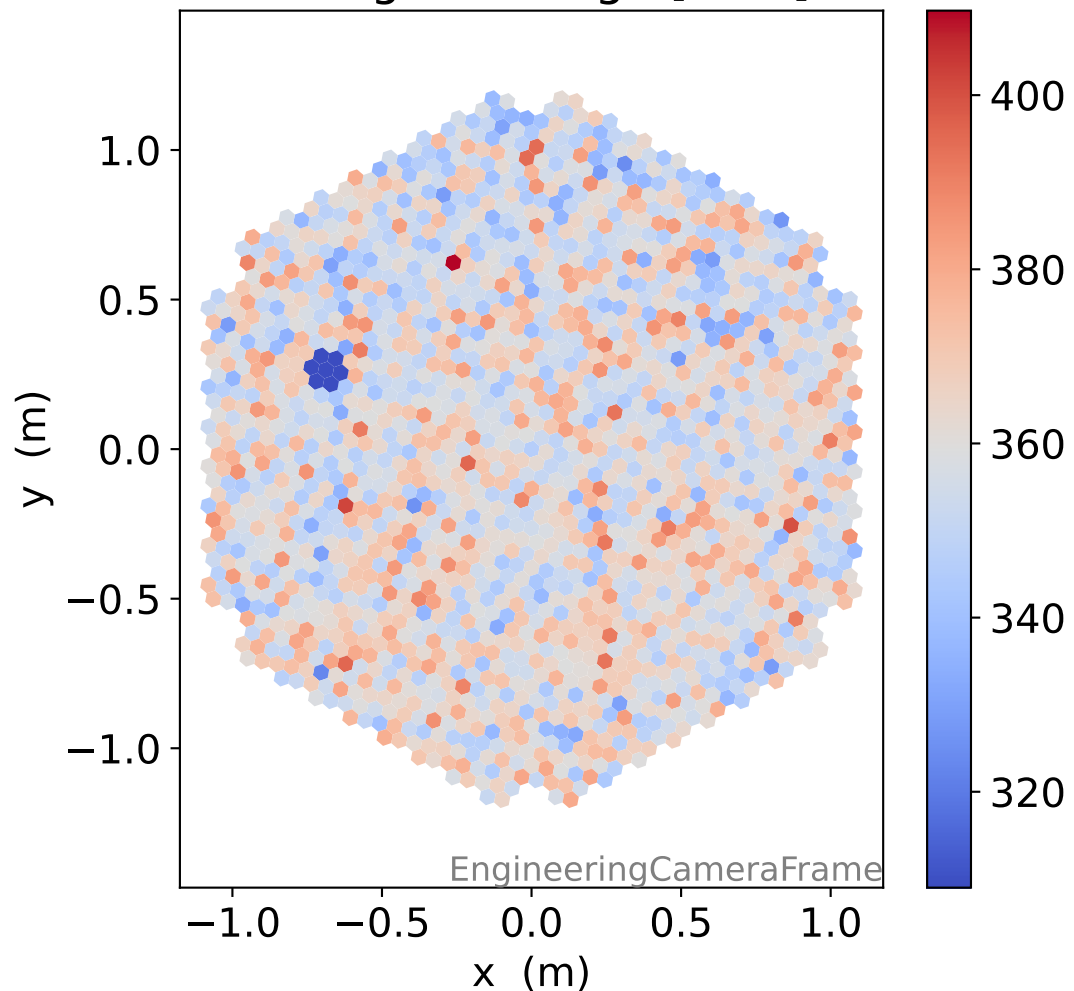


# Run 8277

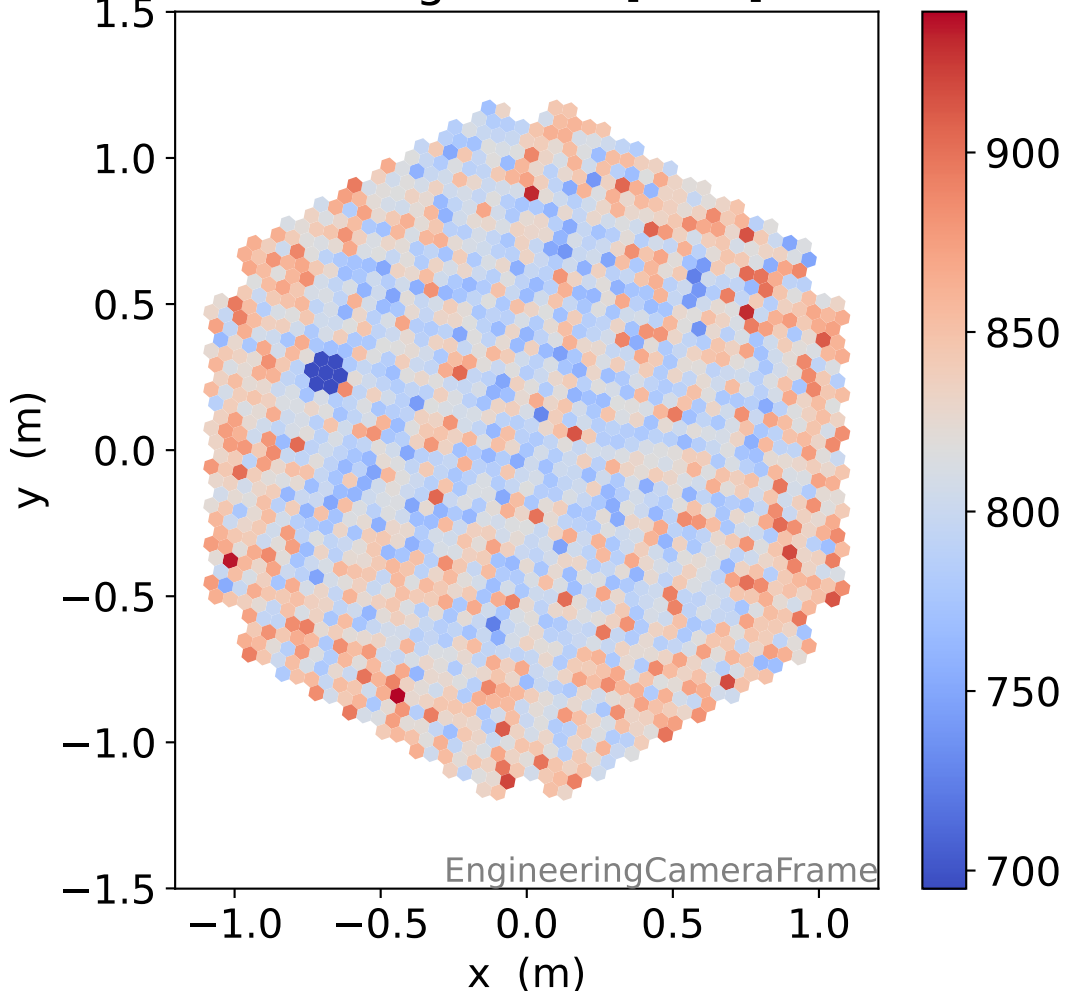
### HG signal charge [ADC]



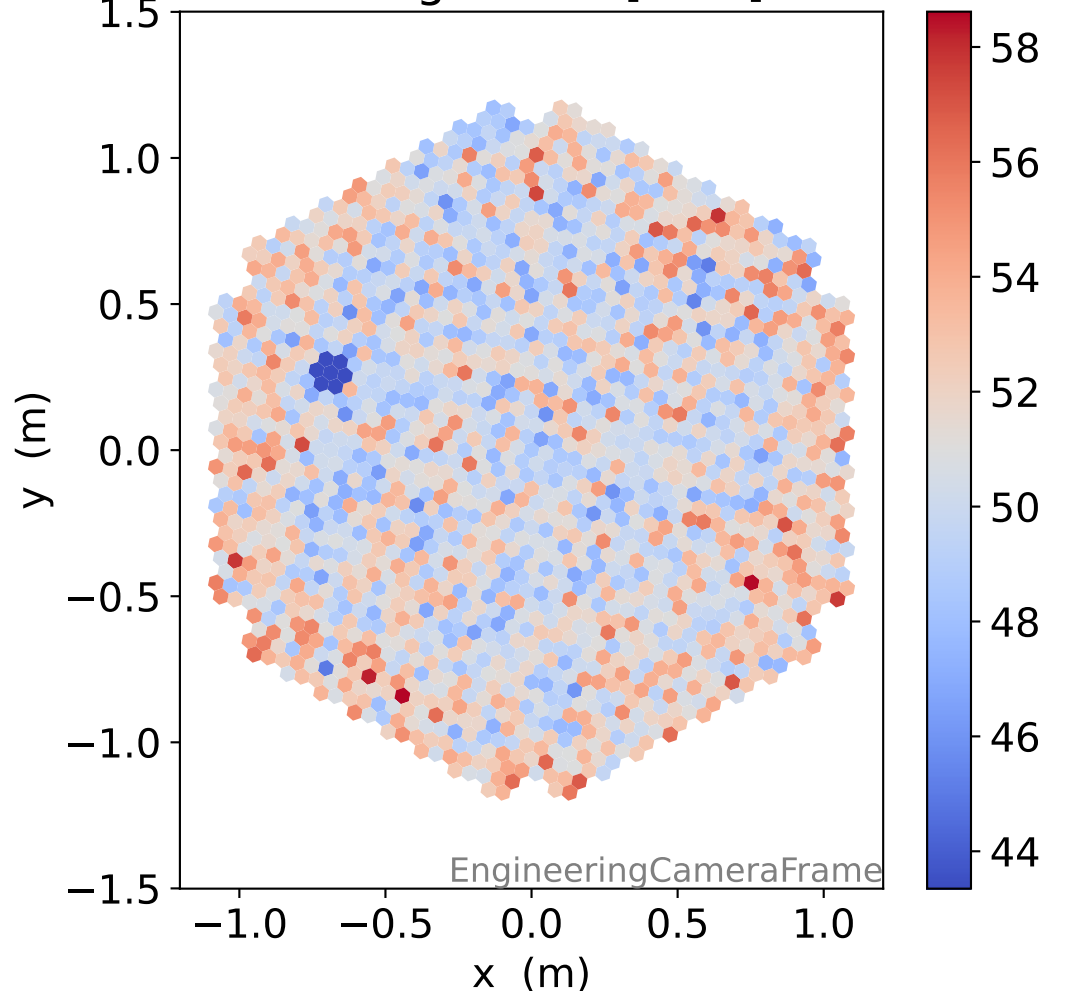
### LG signal charge [ADC]



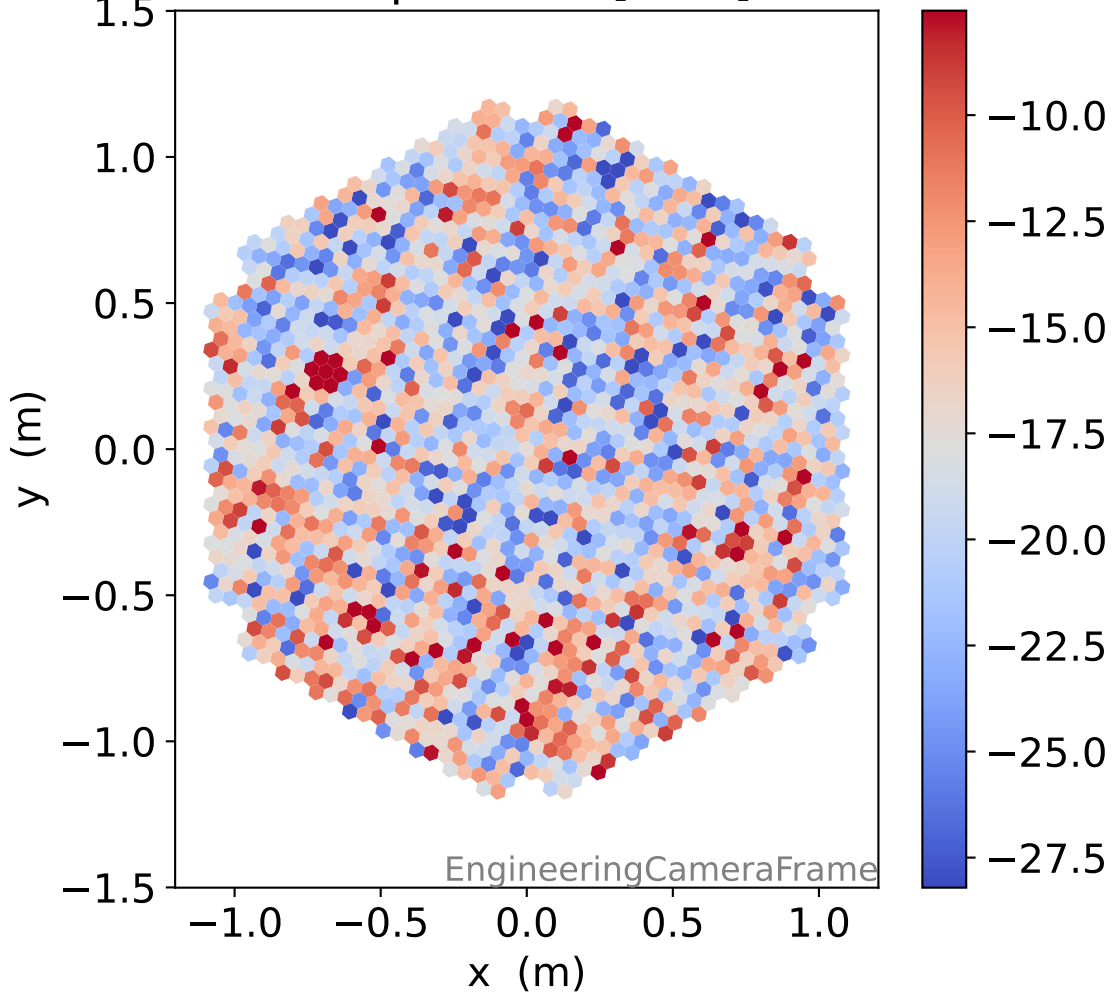
### HG signal std [ADC]



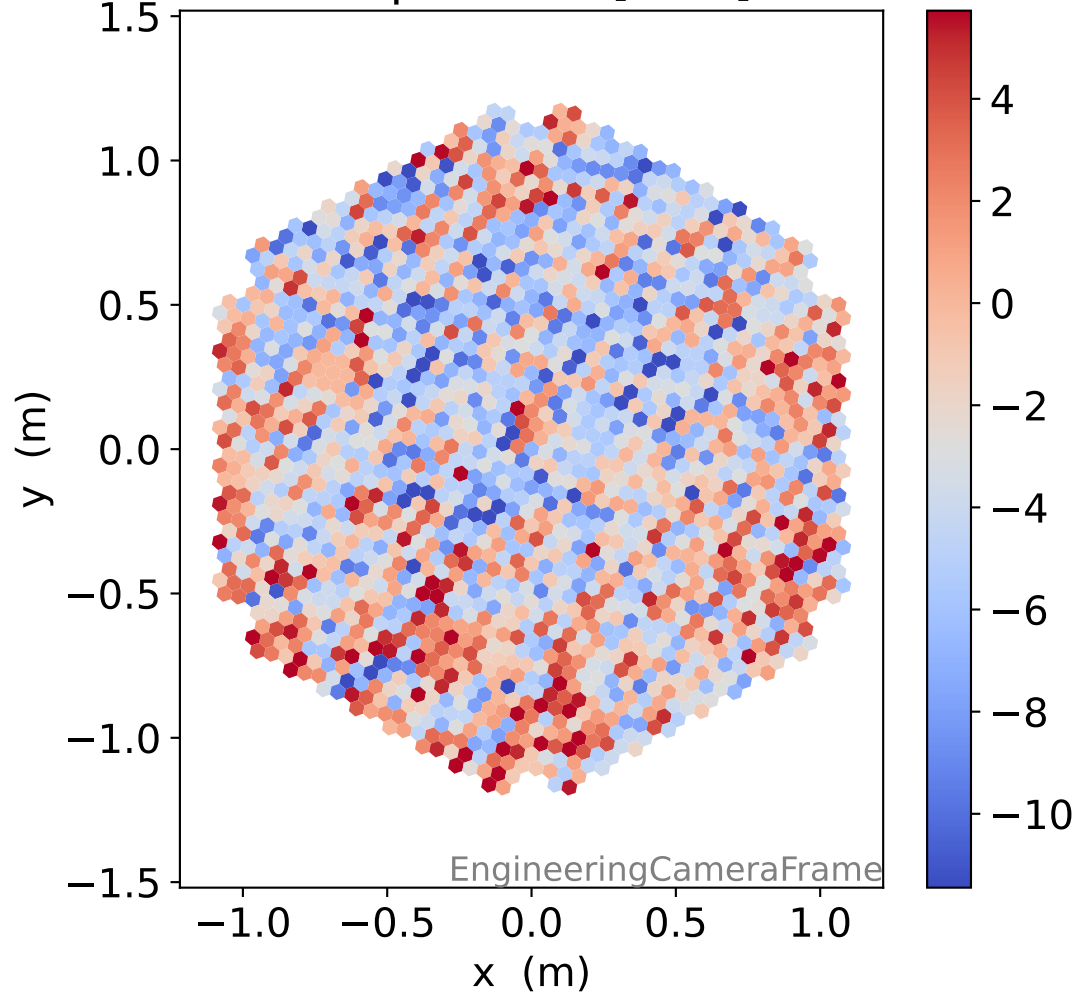
### LG signal std [ADC]



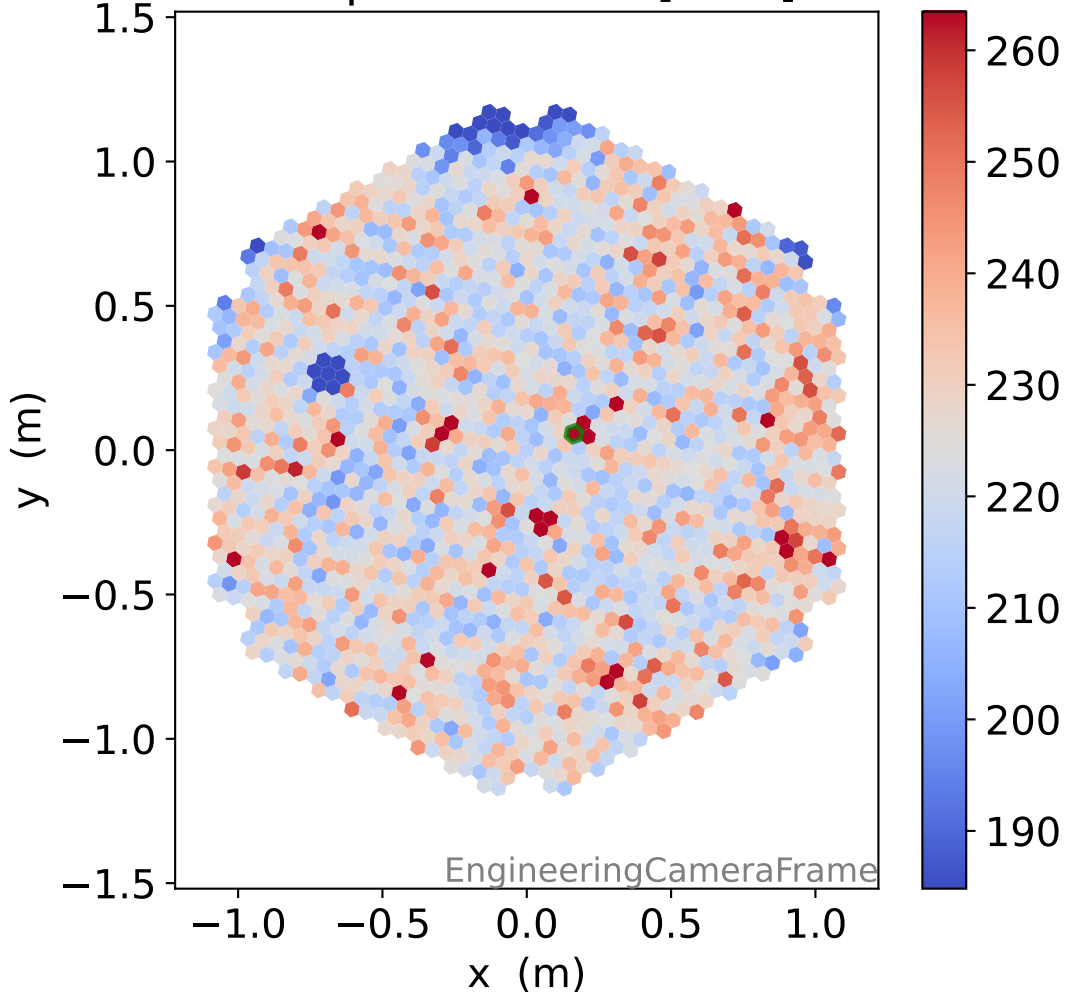
### HG pedestal [ADC]



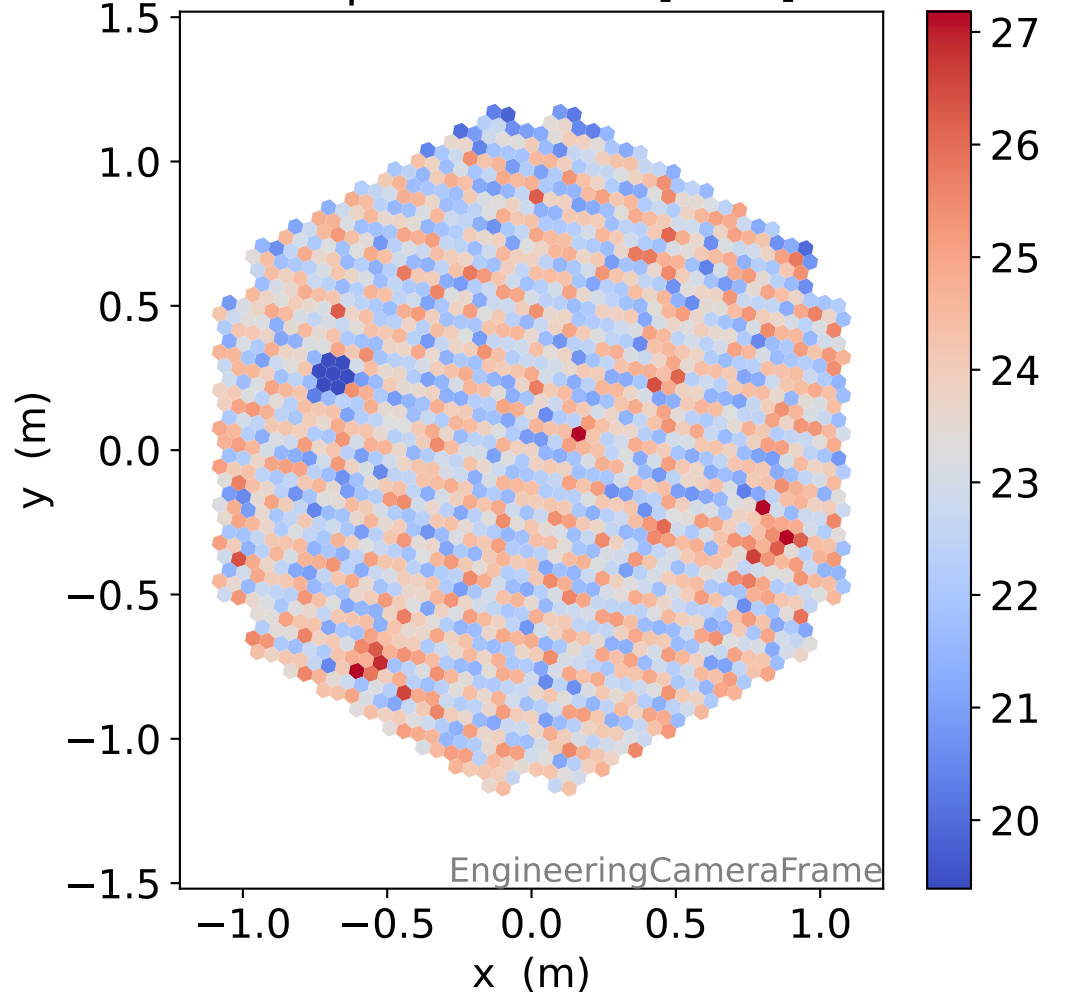
### LG pedestal [ADC]



### HG pedestal std [ADC]

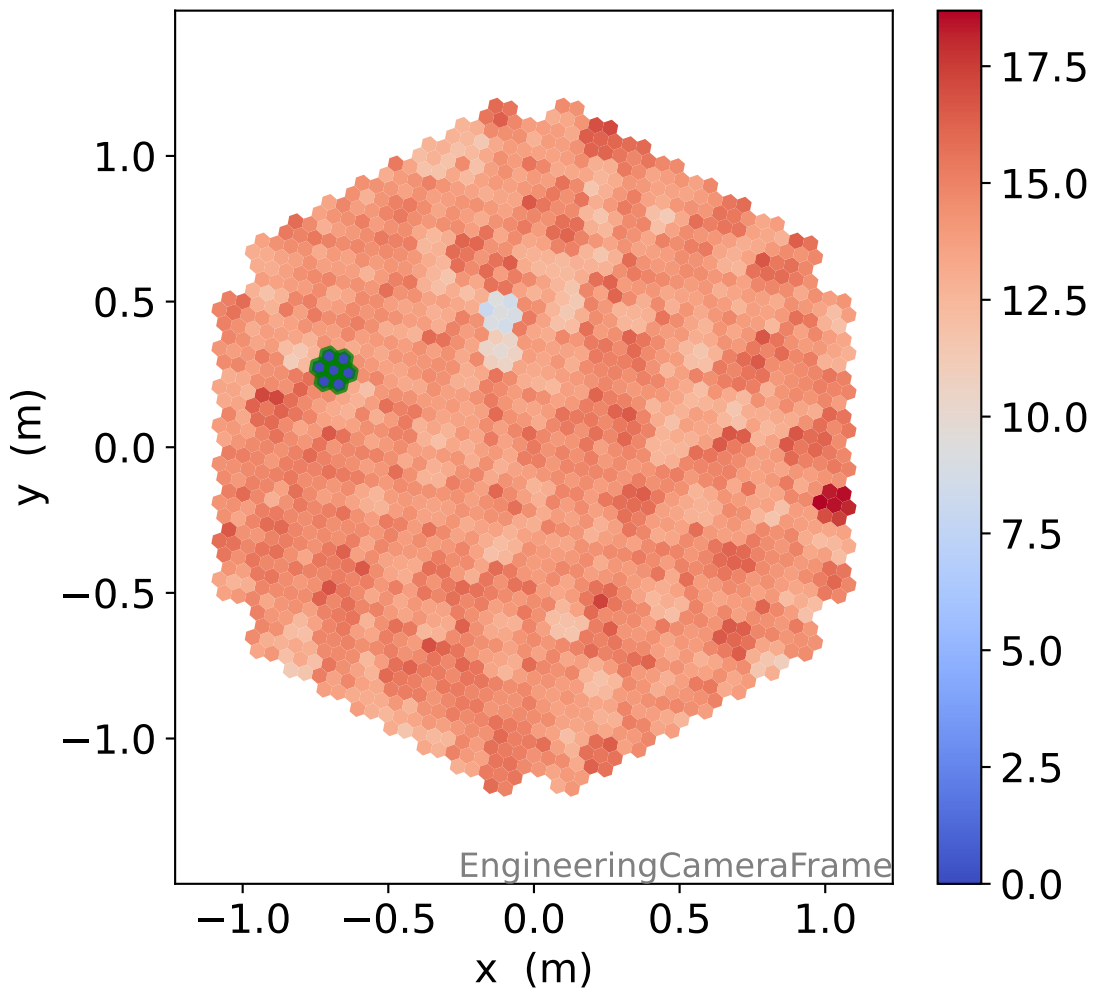


### LG pedestal std [ADC]

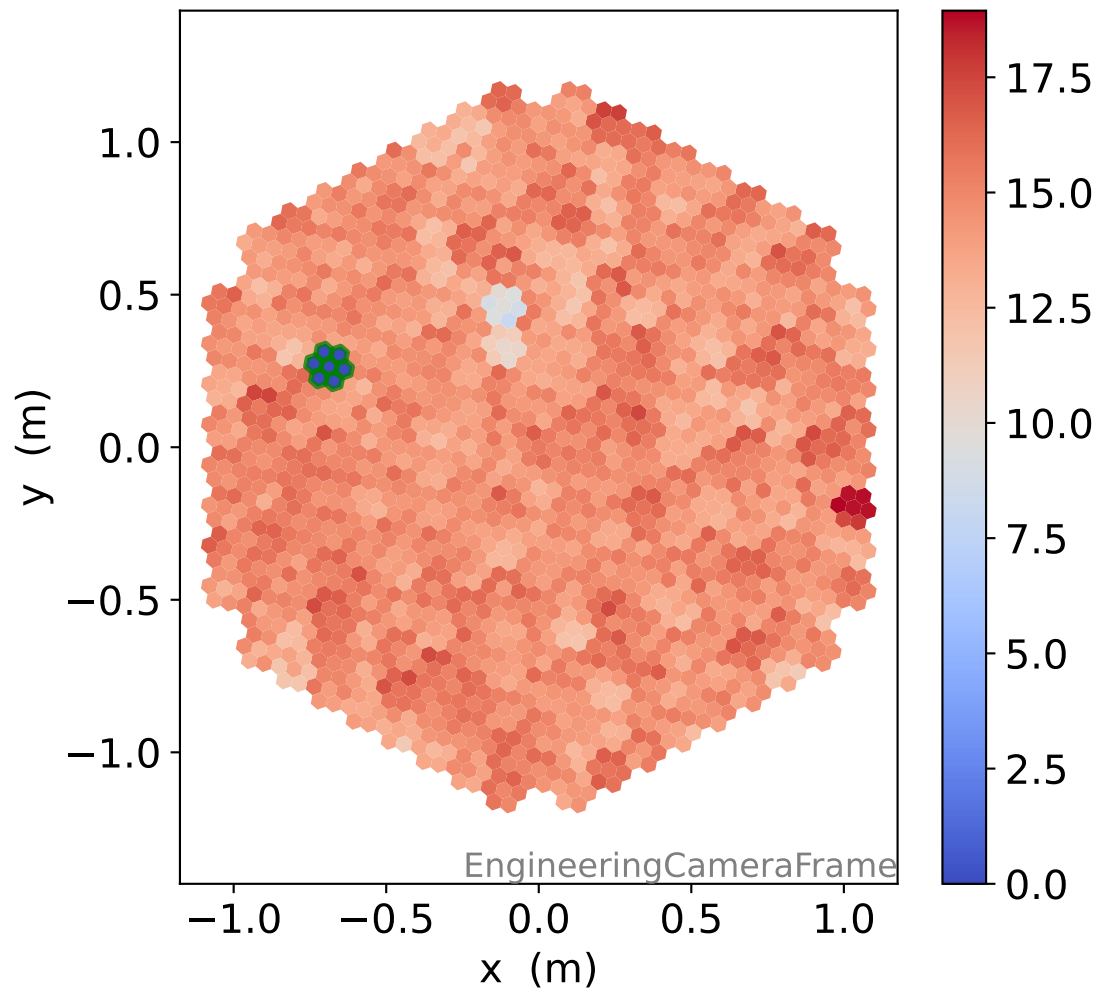


# Run 8277

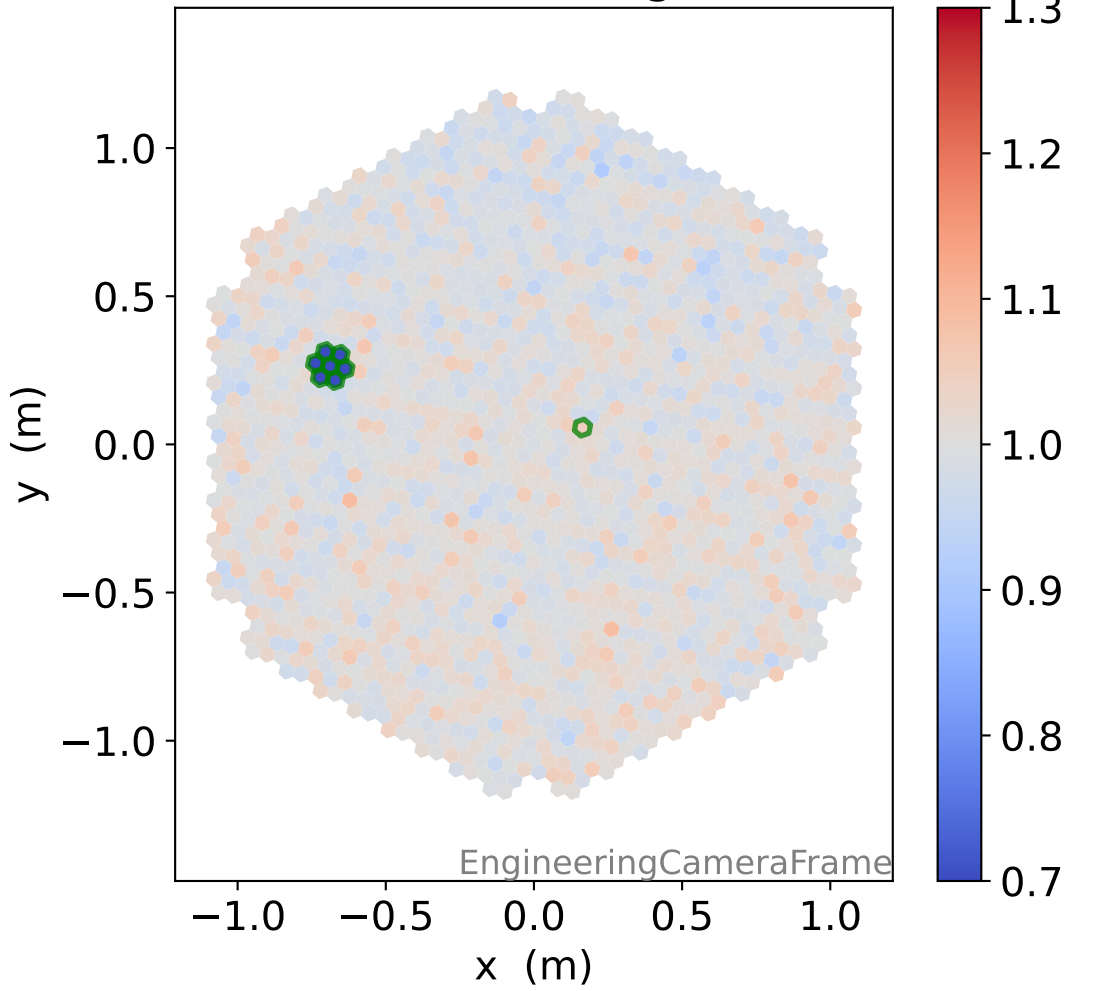
### HG time



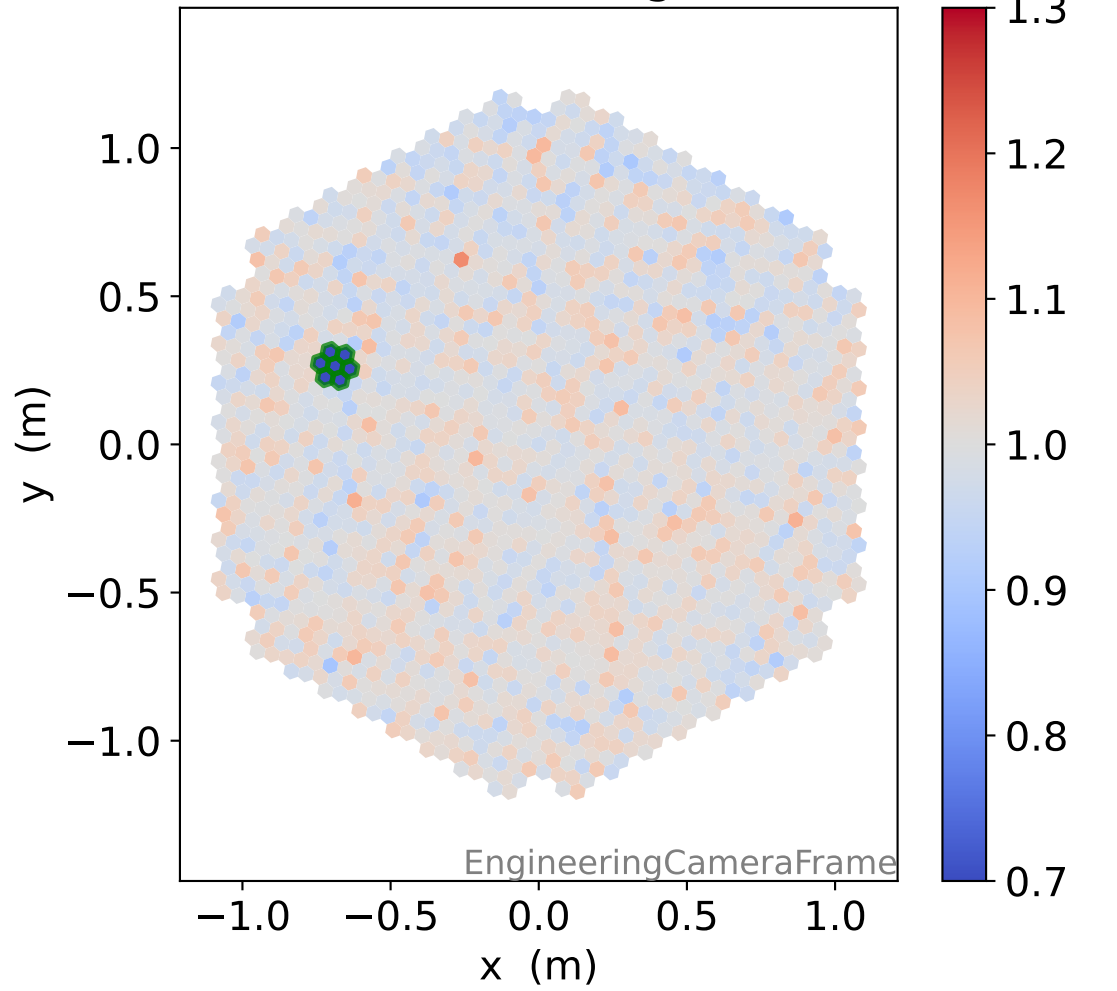
### LG time



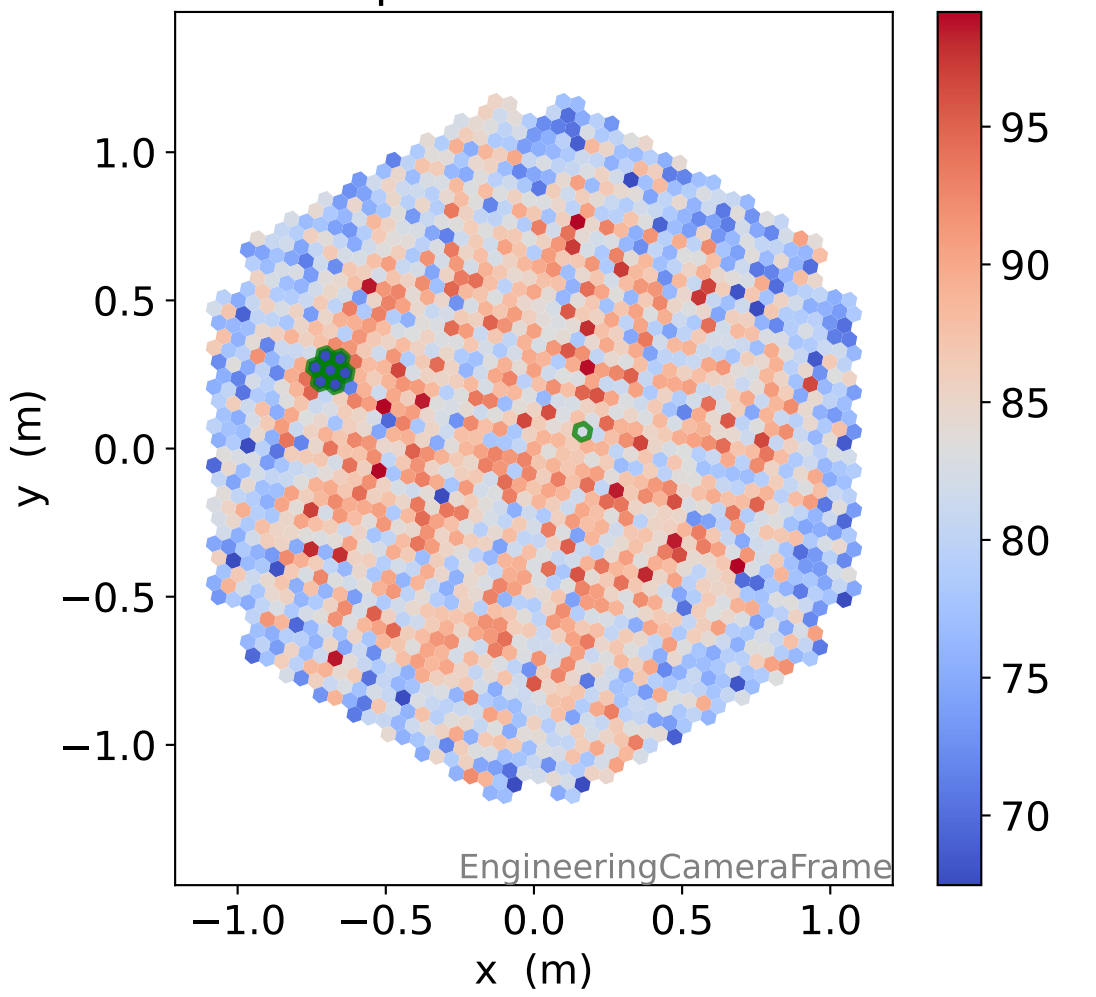
### HG relative signal



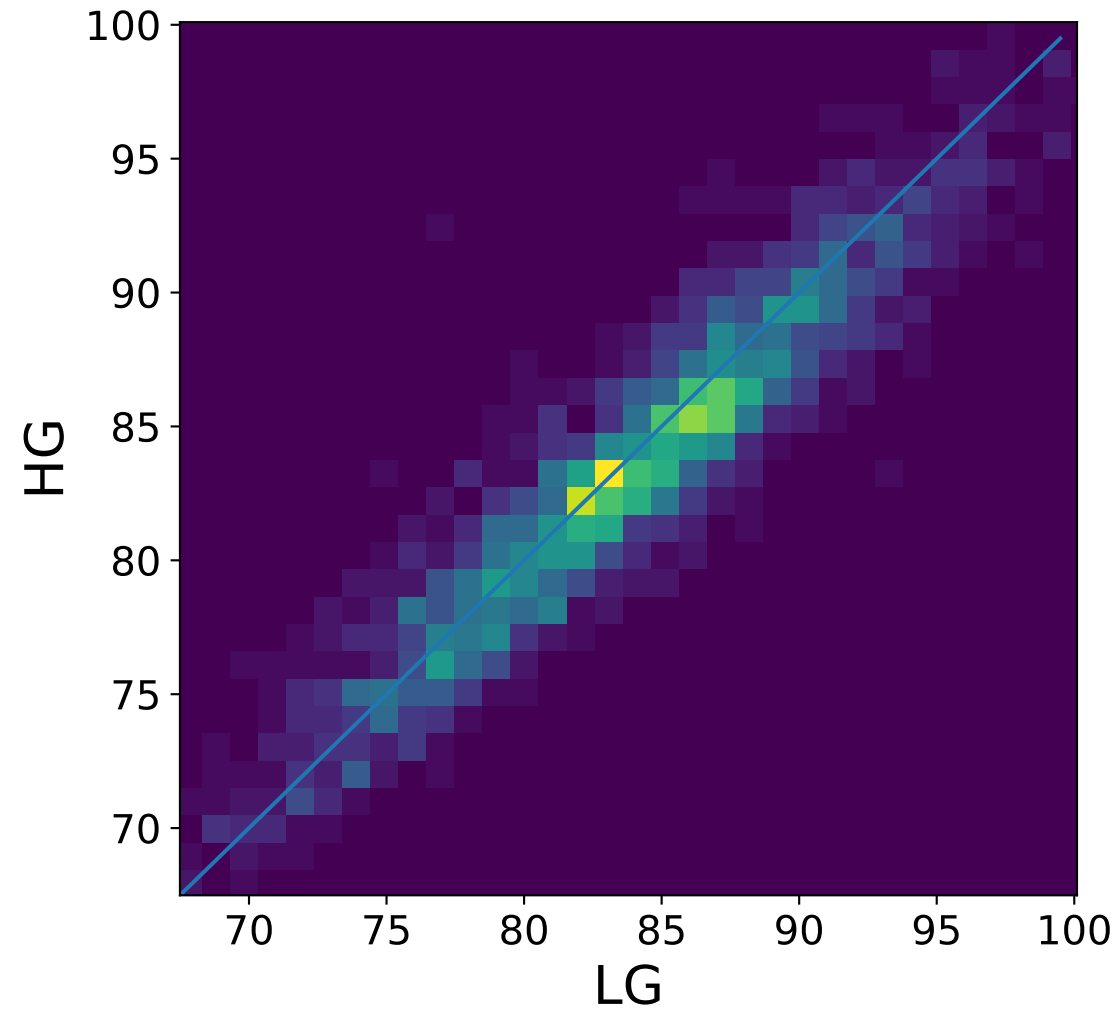
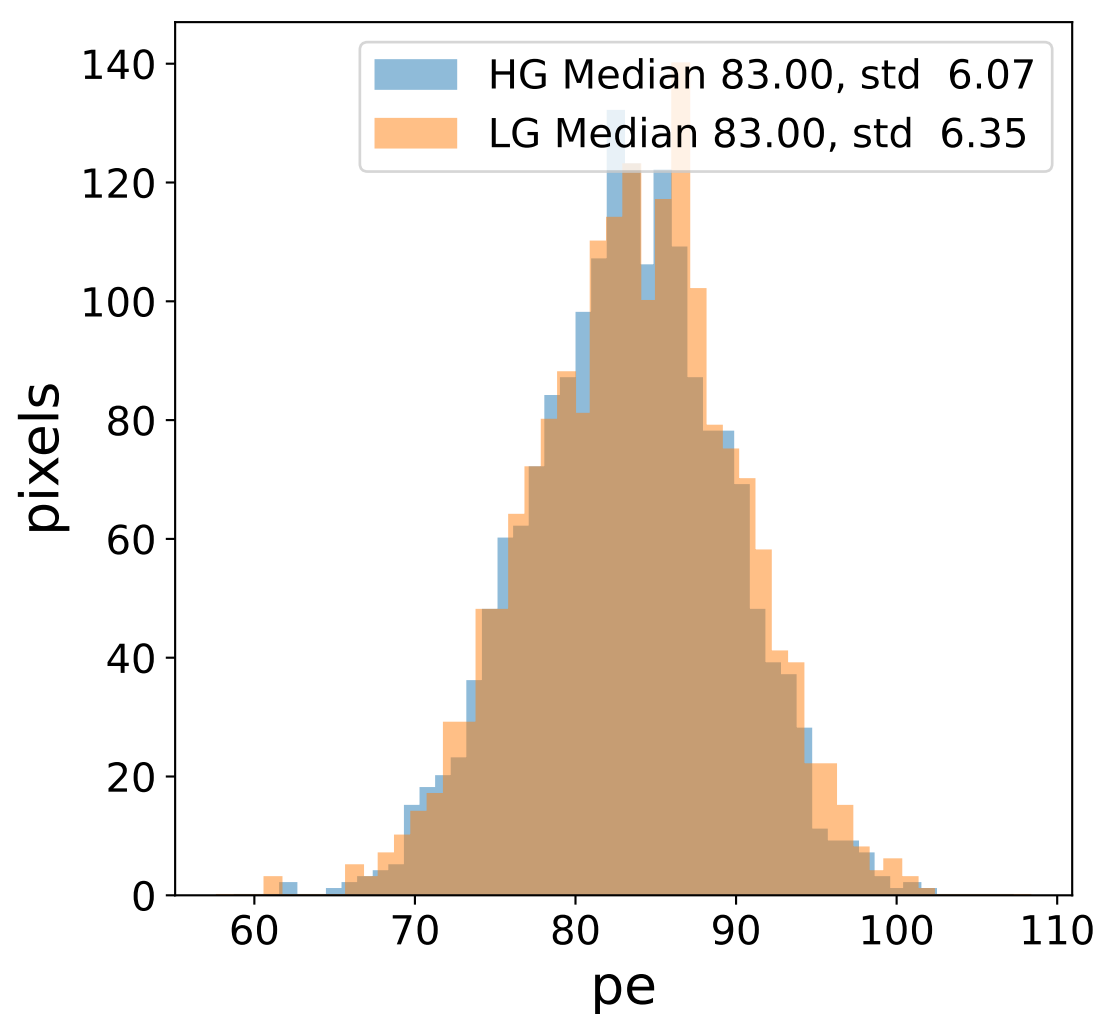
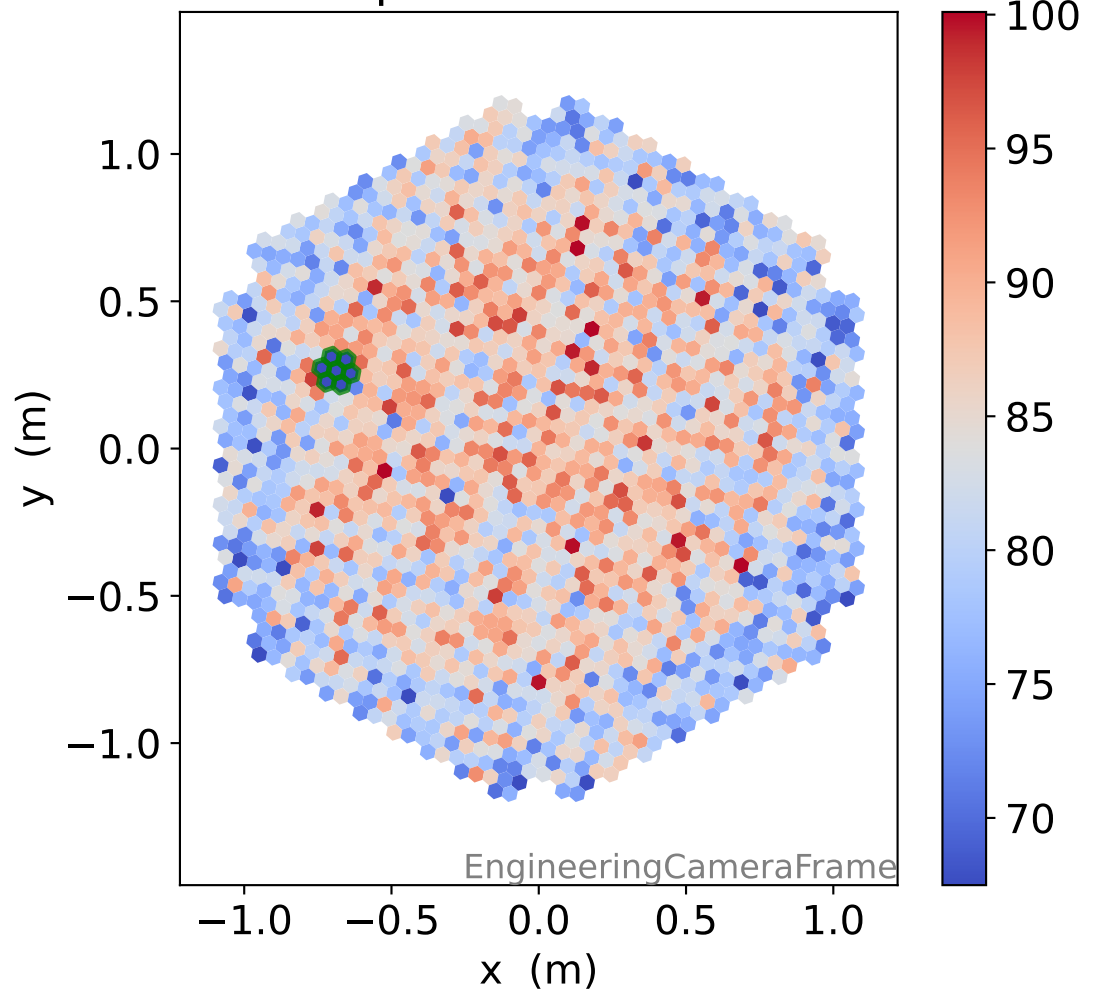
### LG relative signal



### HG photon-electrons

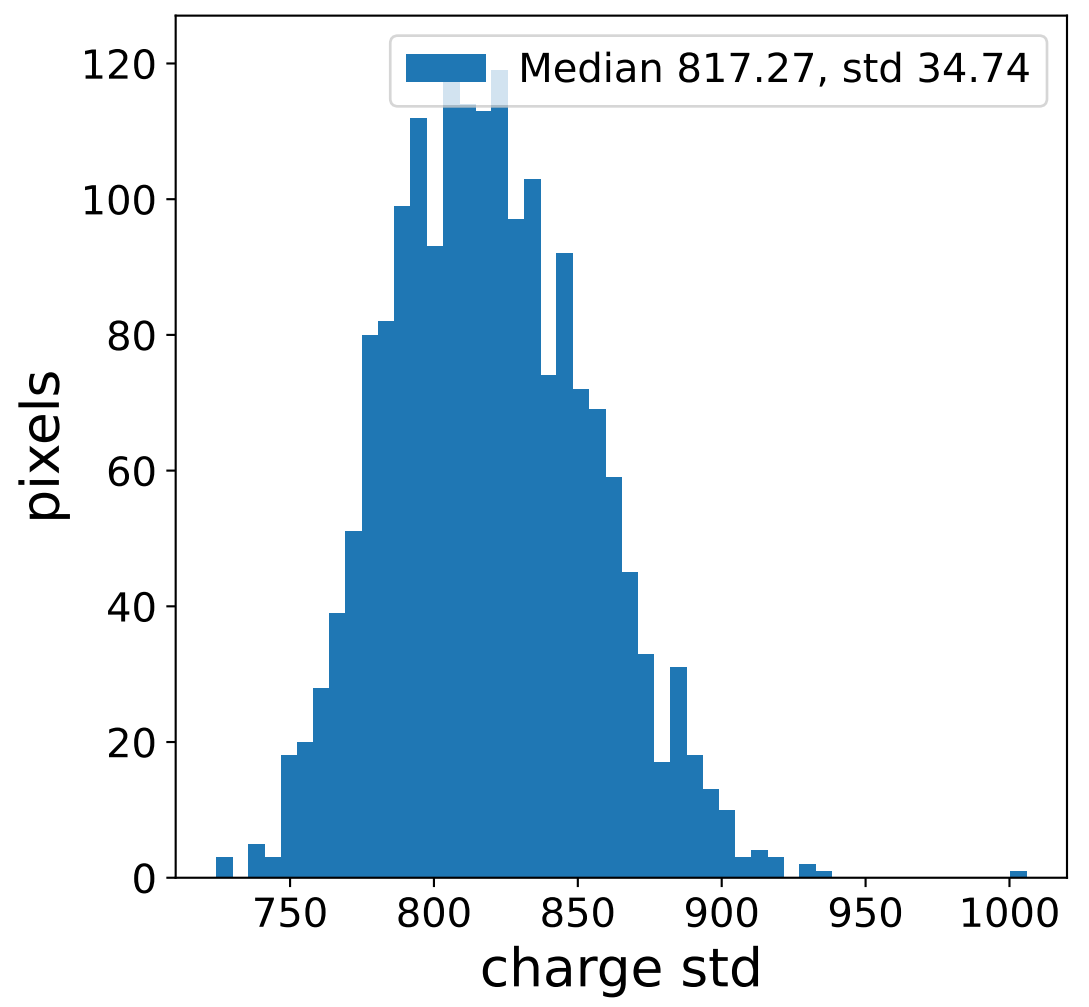
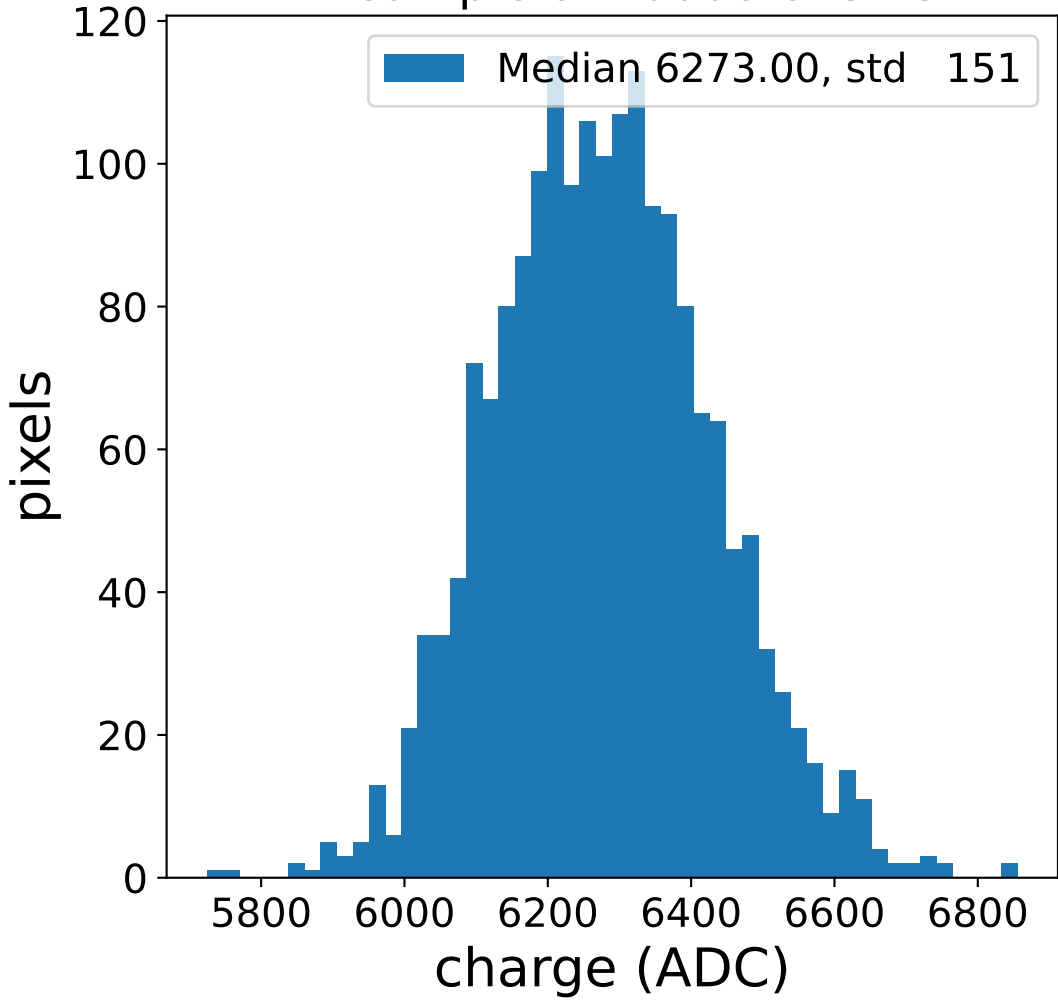


### LG photon-electrons

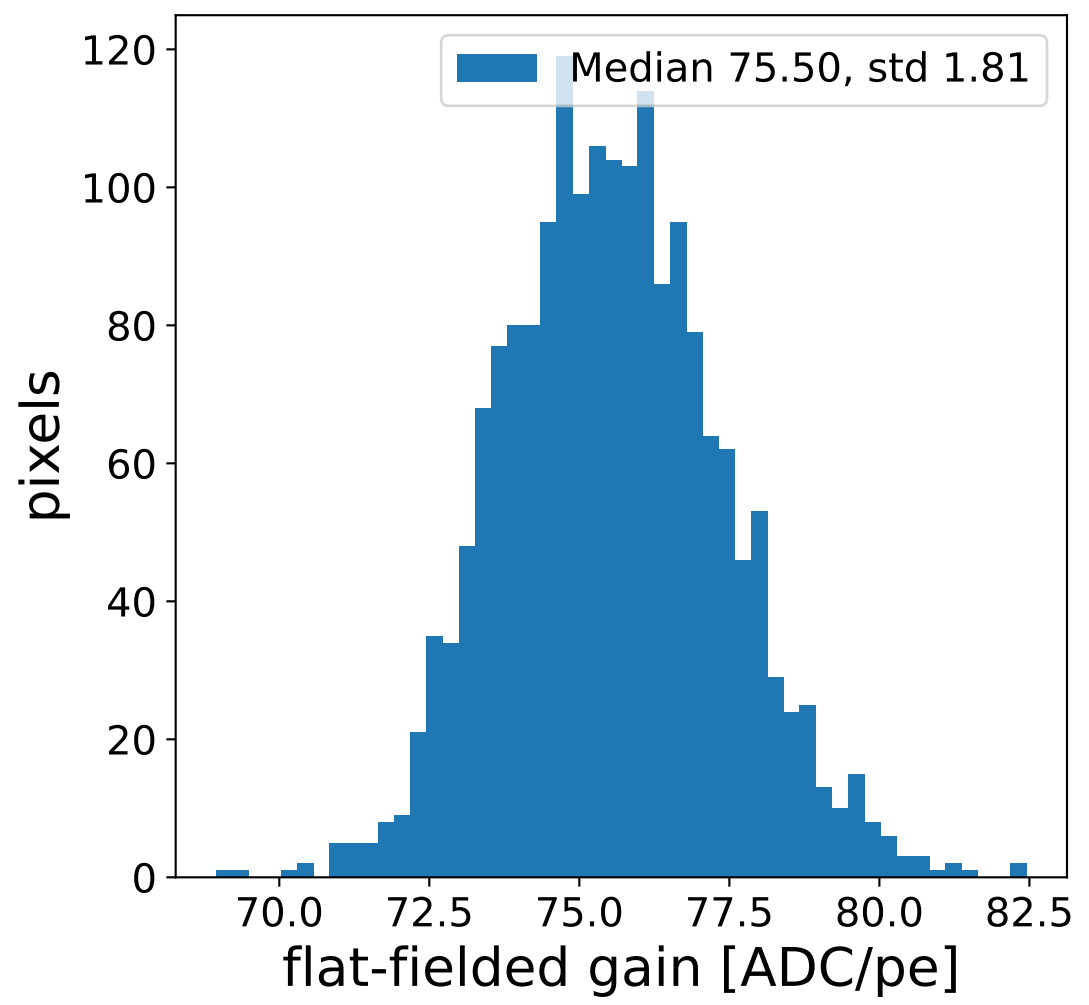
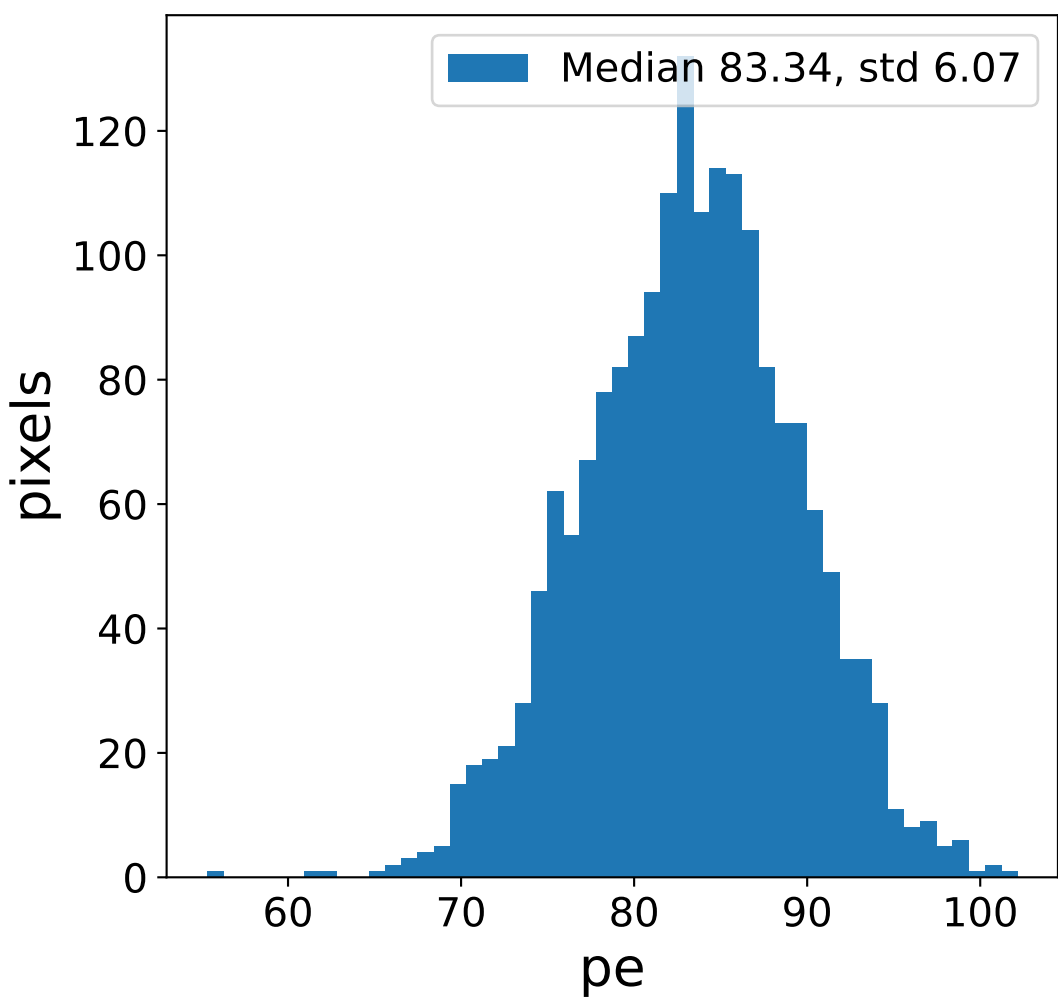
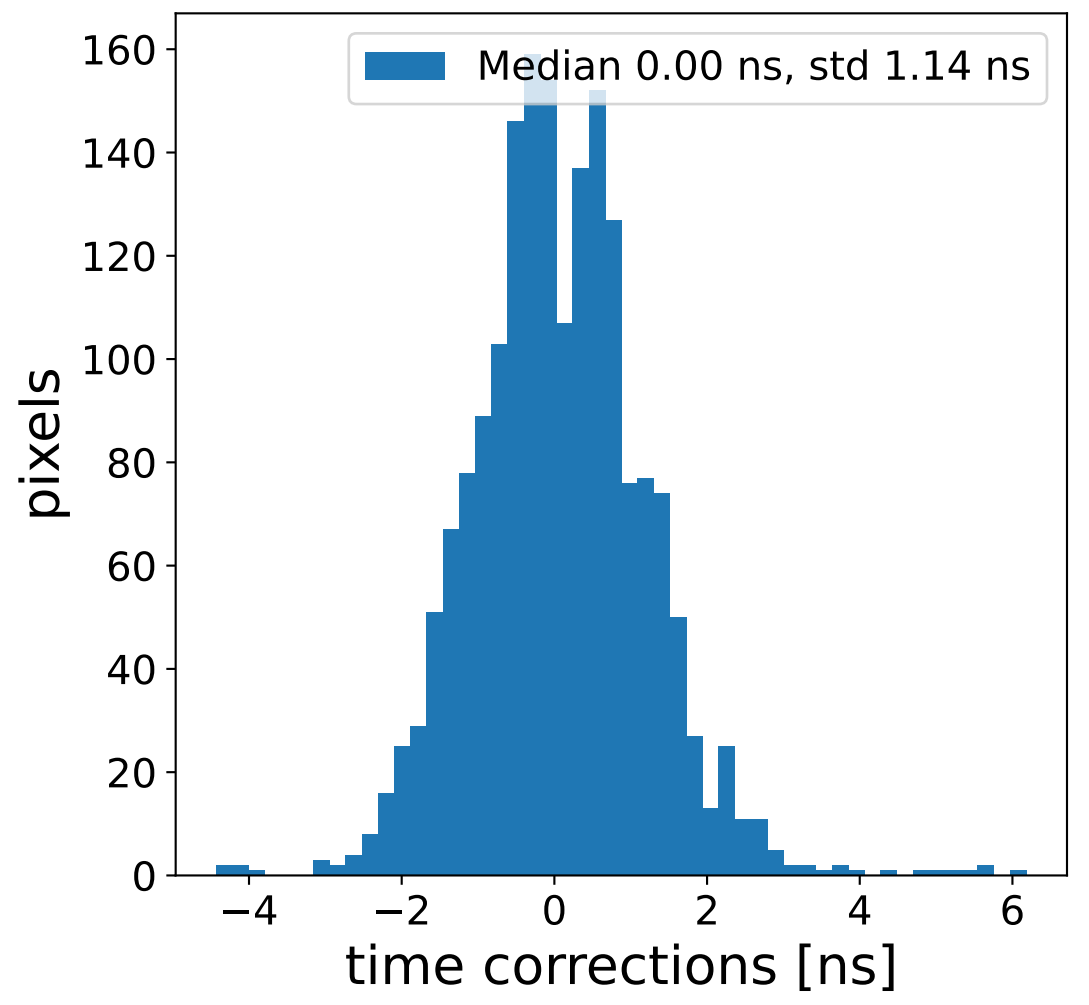
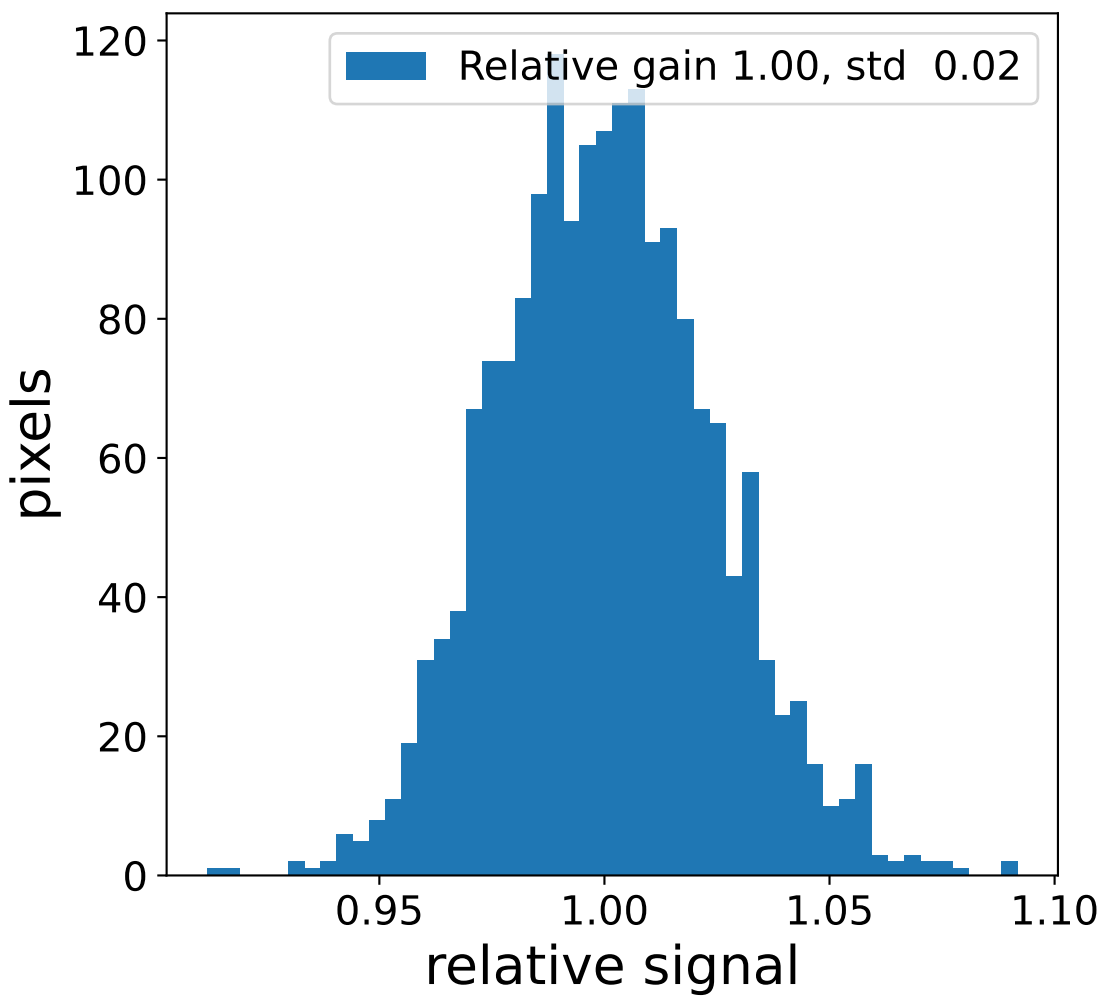
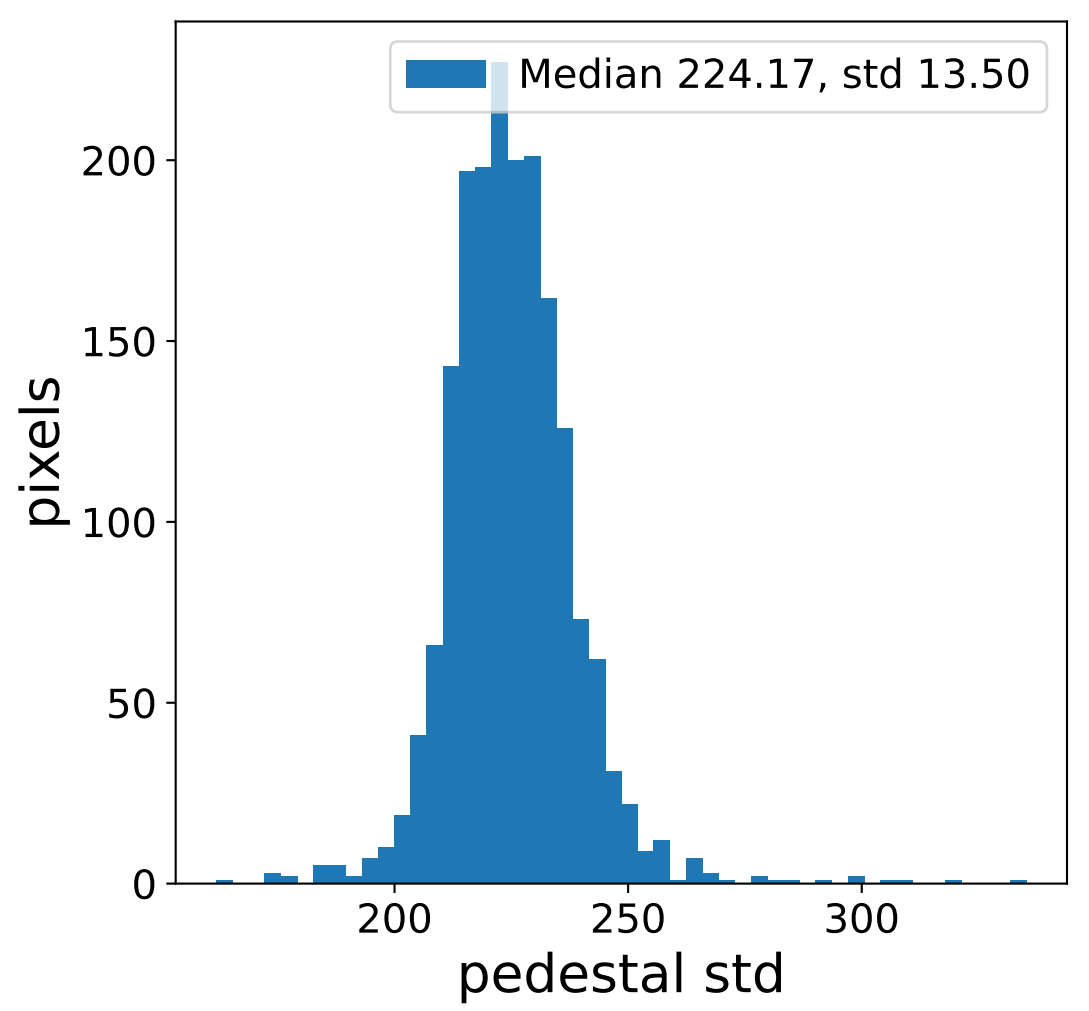
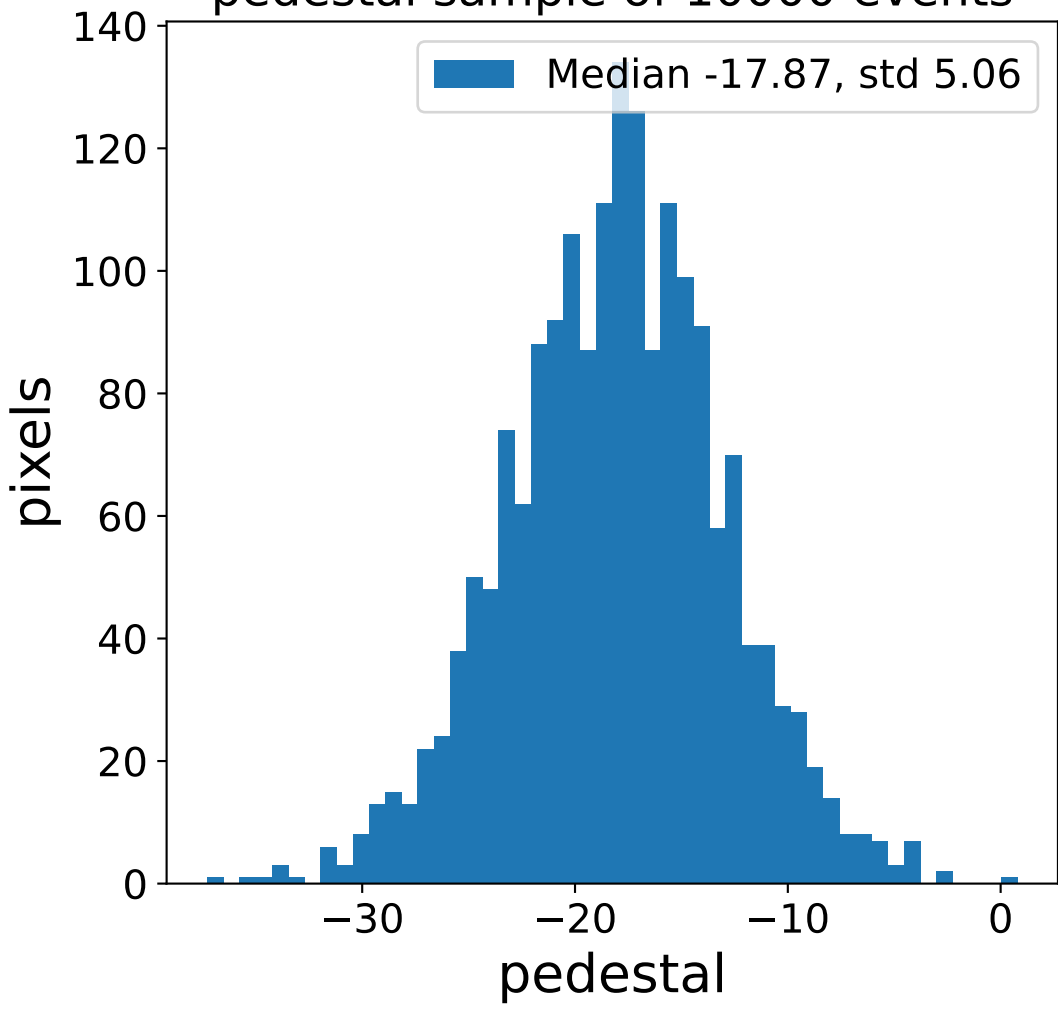


# Run 8277 channel: HG

FF sample of 10000 events

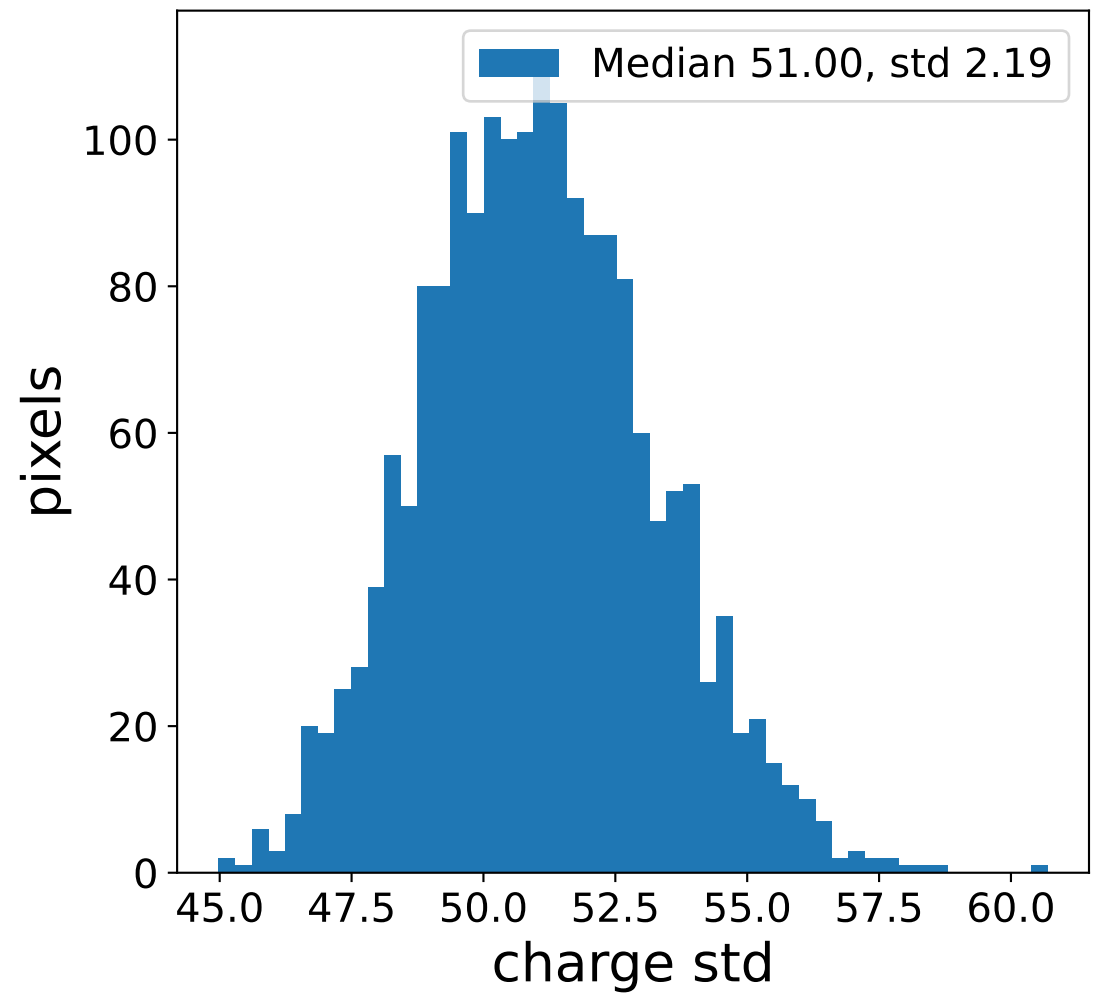
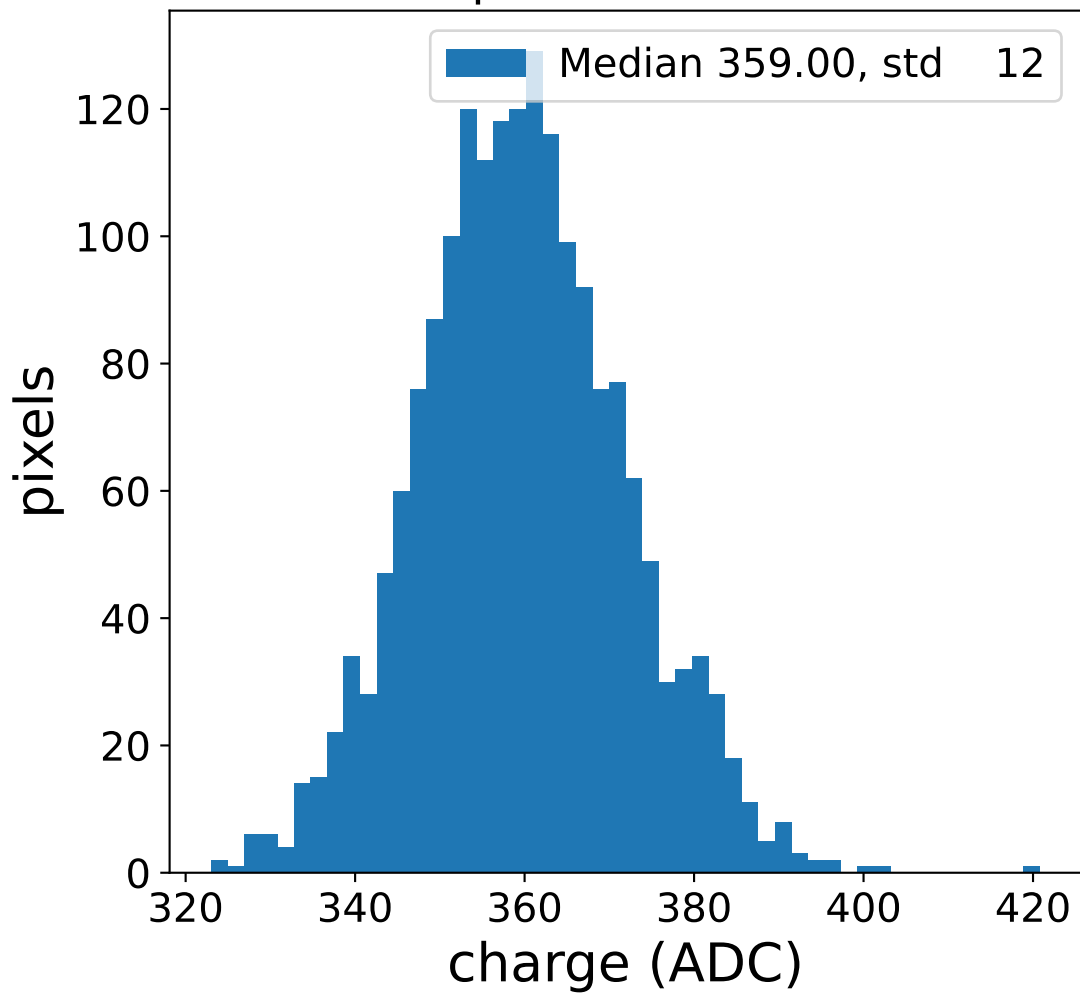


pedestal sample of 10000 events



# Run 8277 channel: LG

## FF sample of 10000 events



## pedestal sample of 10000 events

