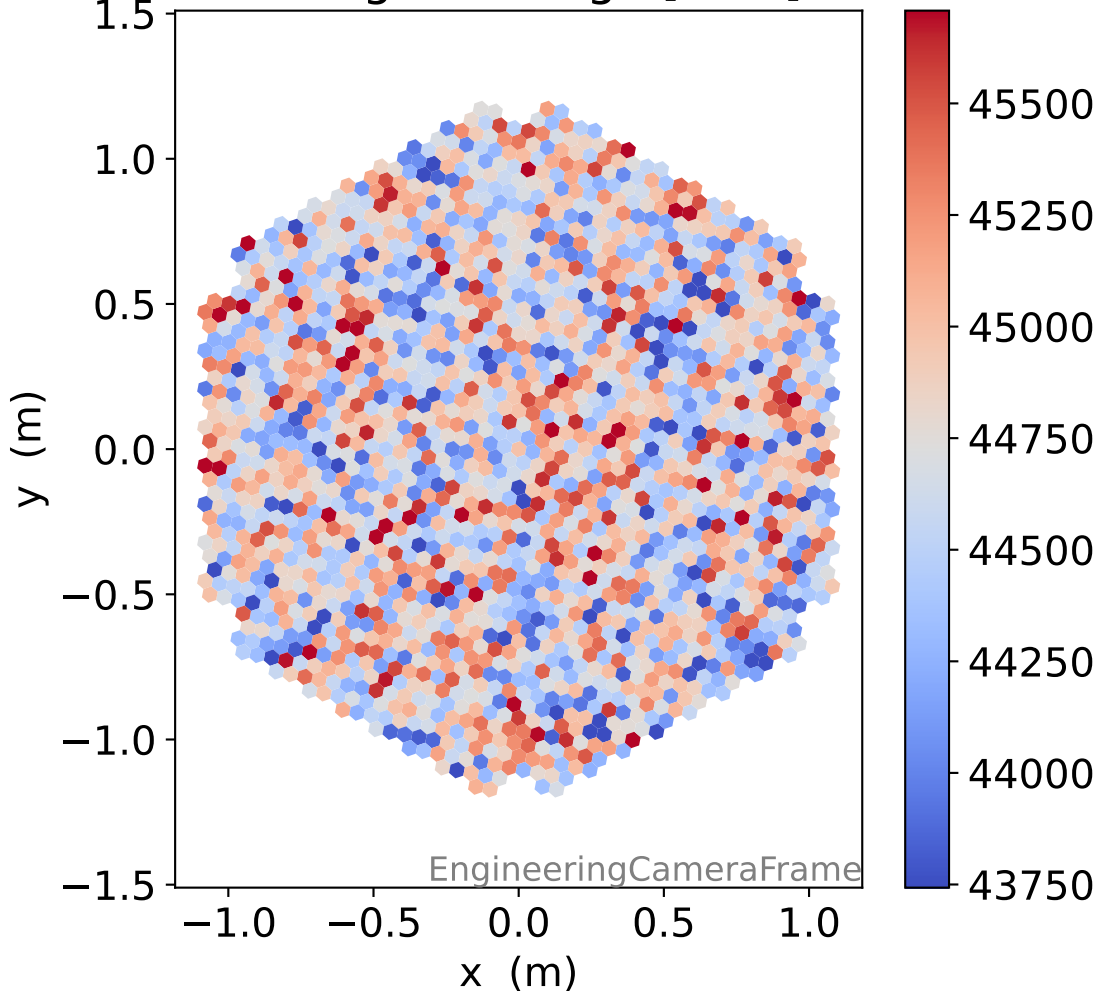
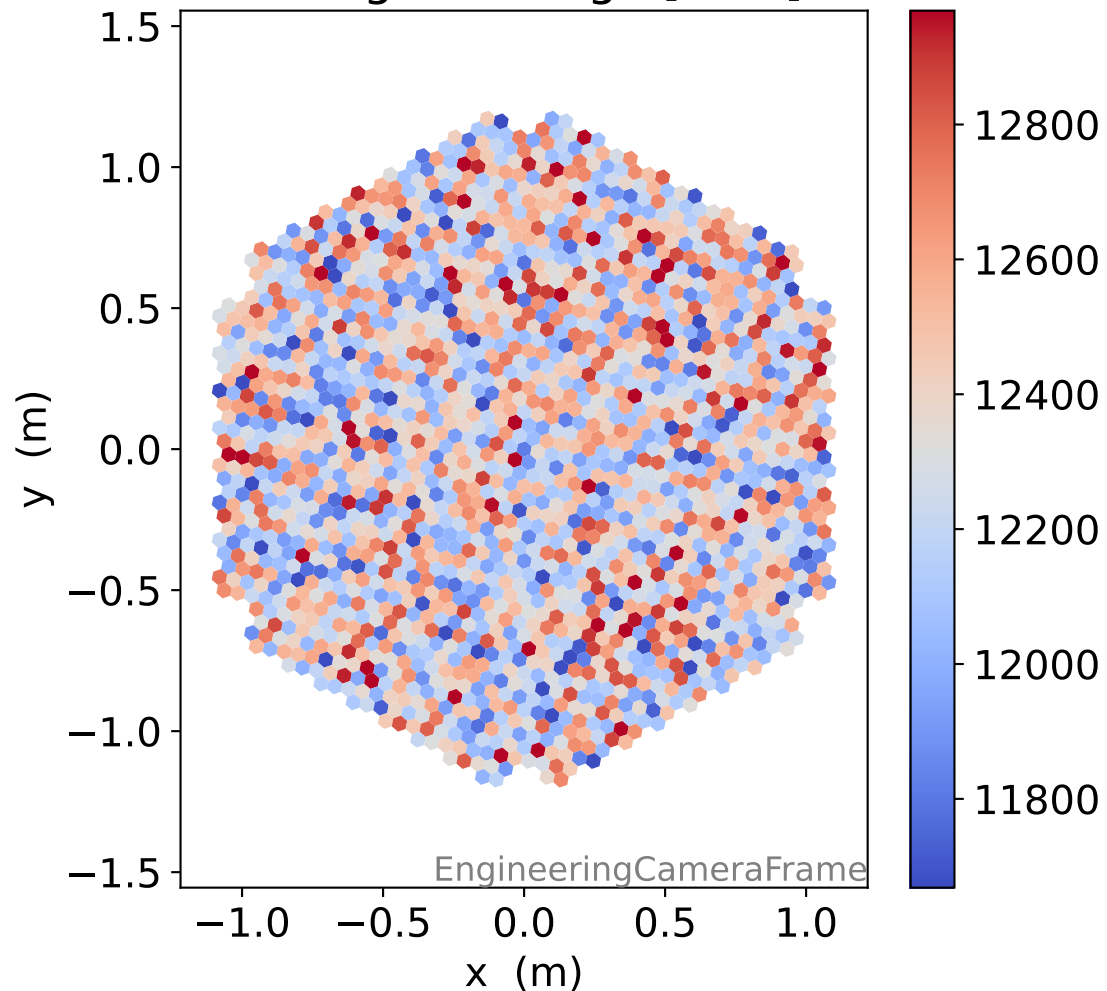


# Run 8919

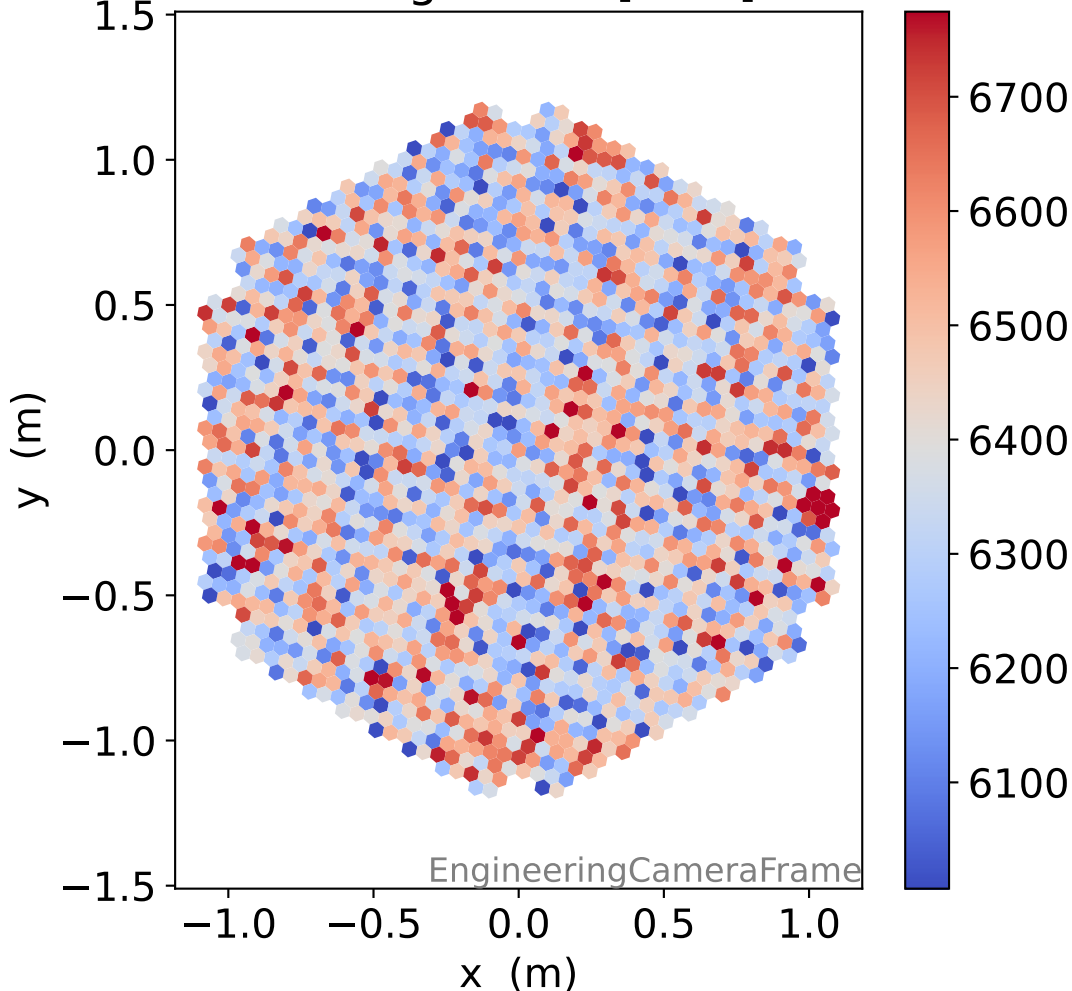
### HG signal charge [ADC]



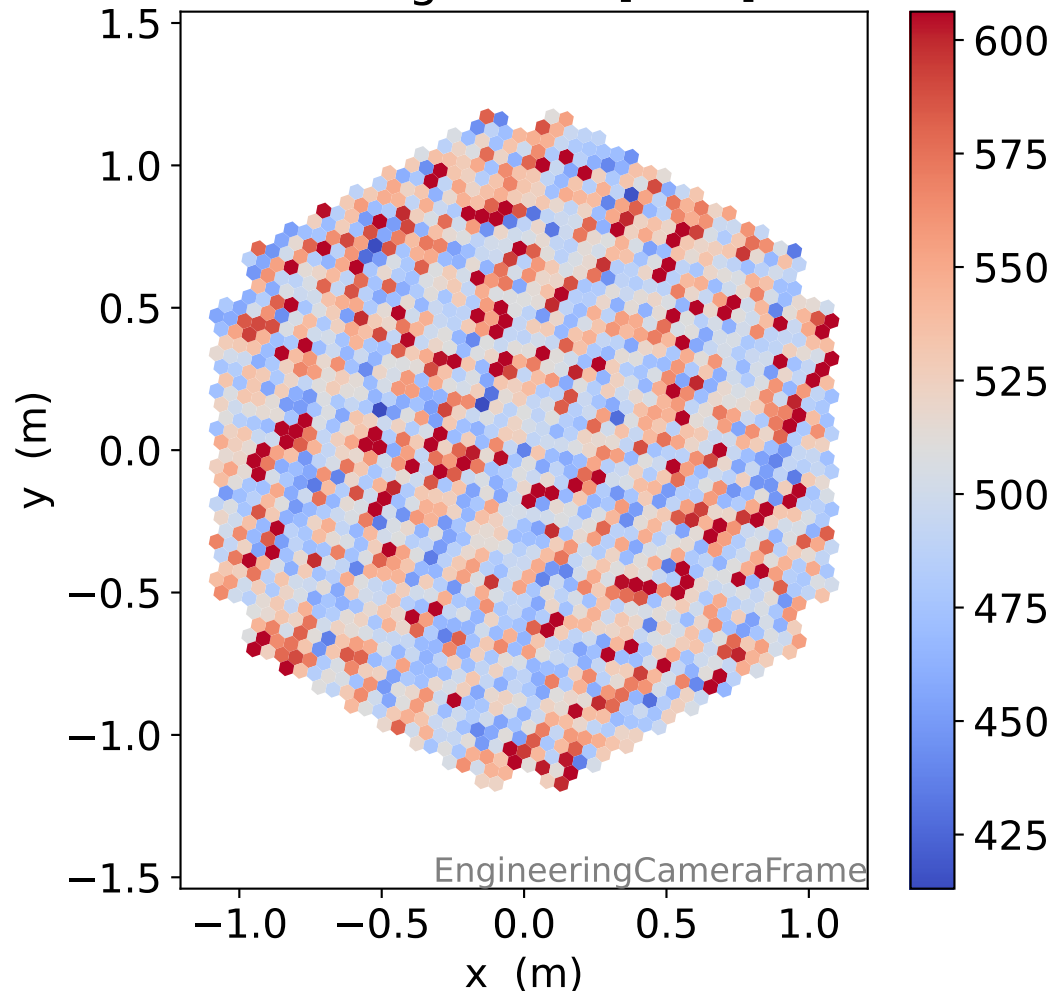
### LG signal charge [ADC]



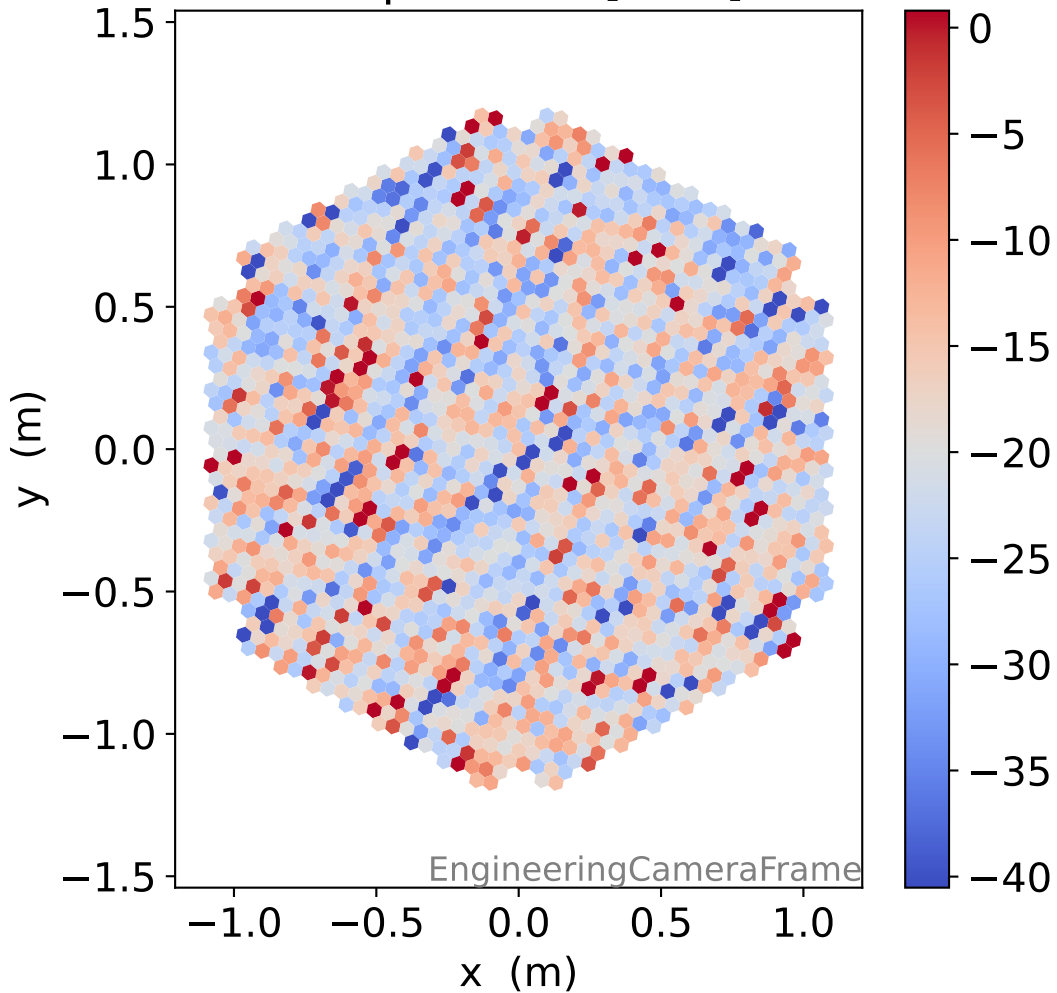
### HG signal std [ADC]



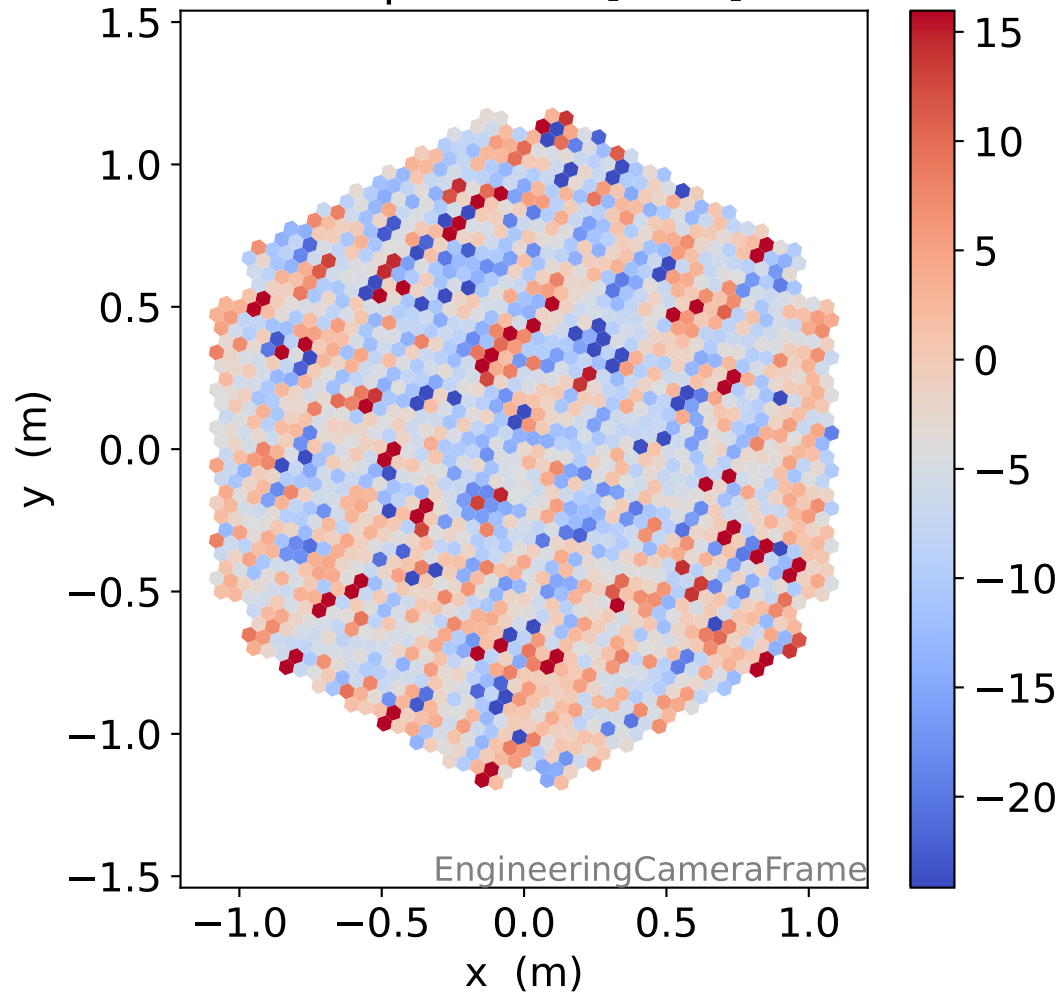
### LG signal std [ADC]



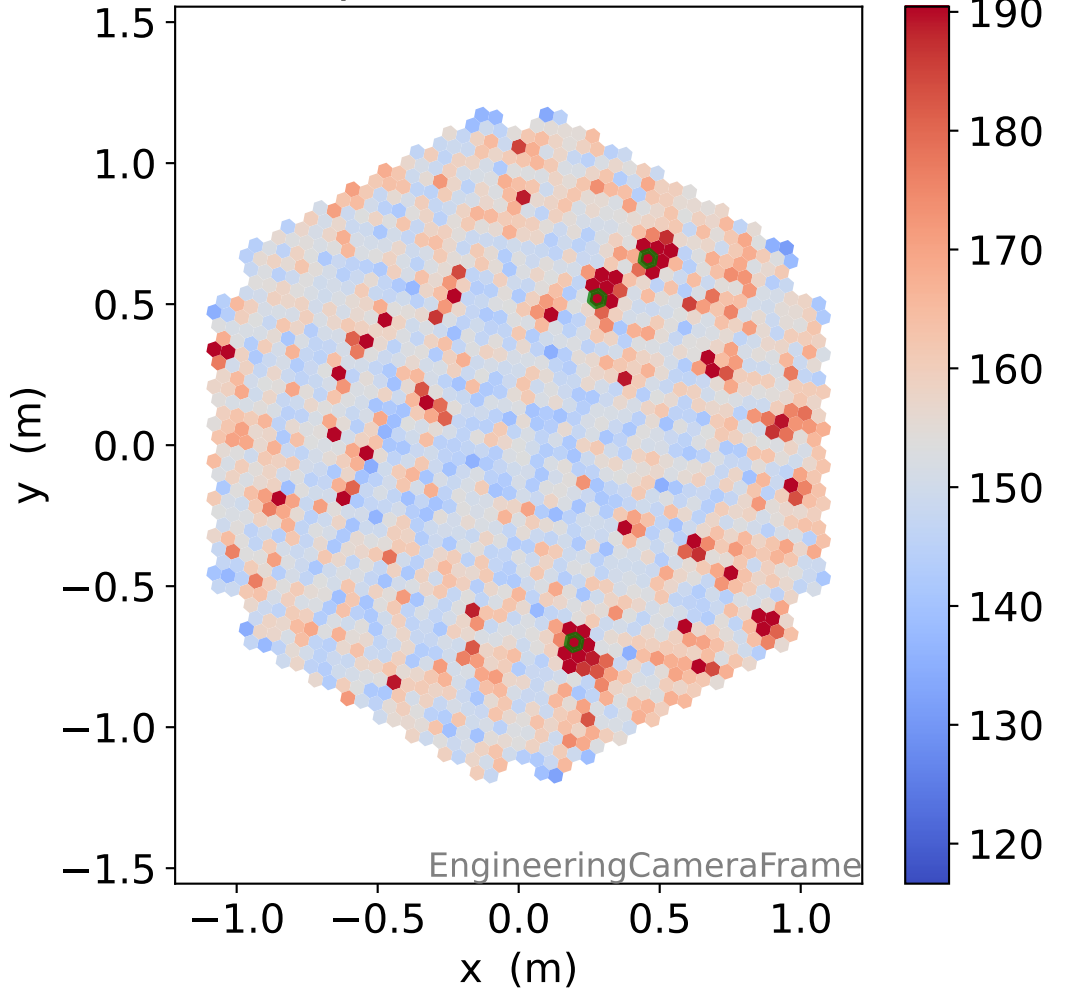
### HG pedestal [ADC]



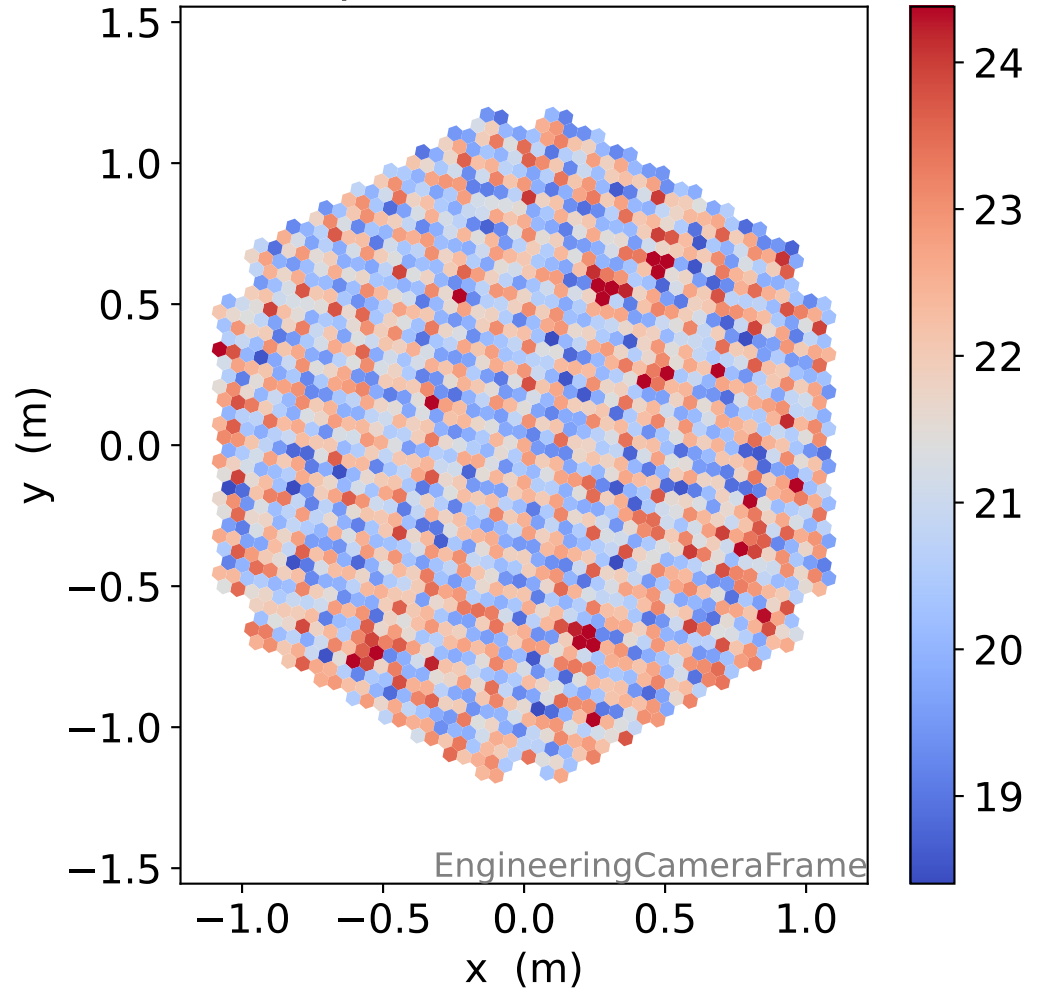
### LG pedestal [ADC]



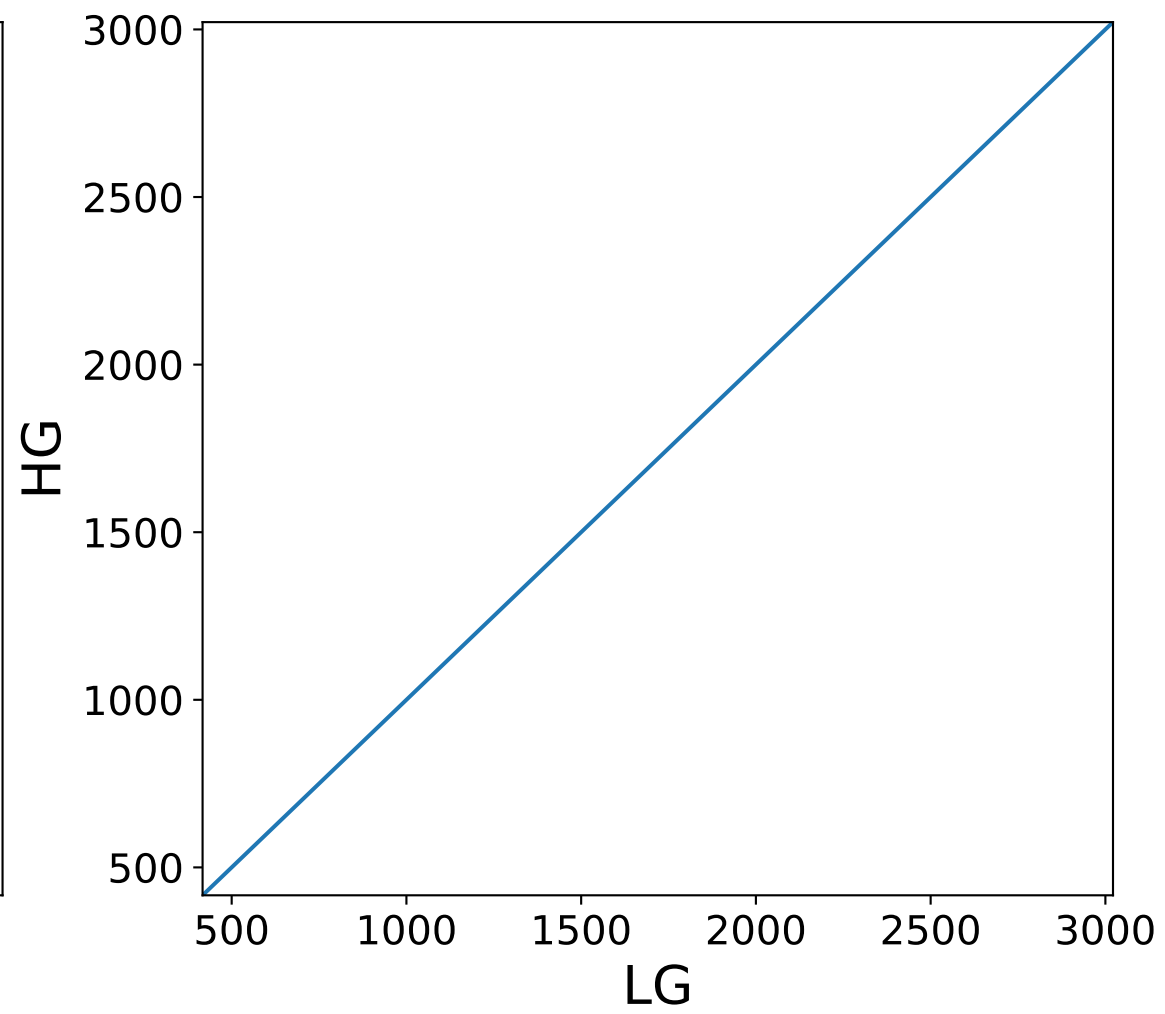
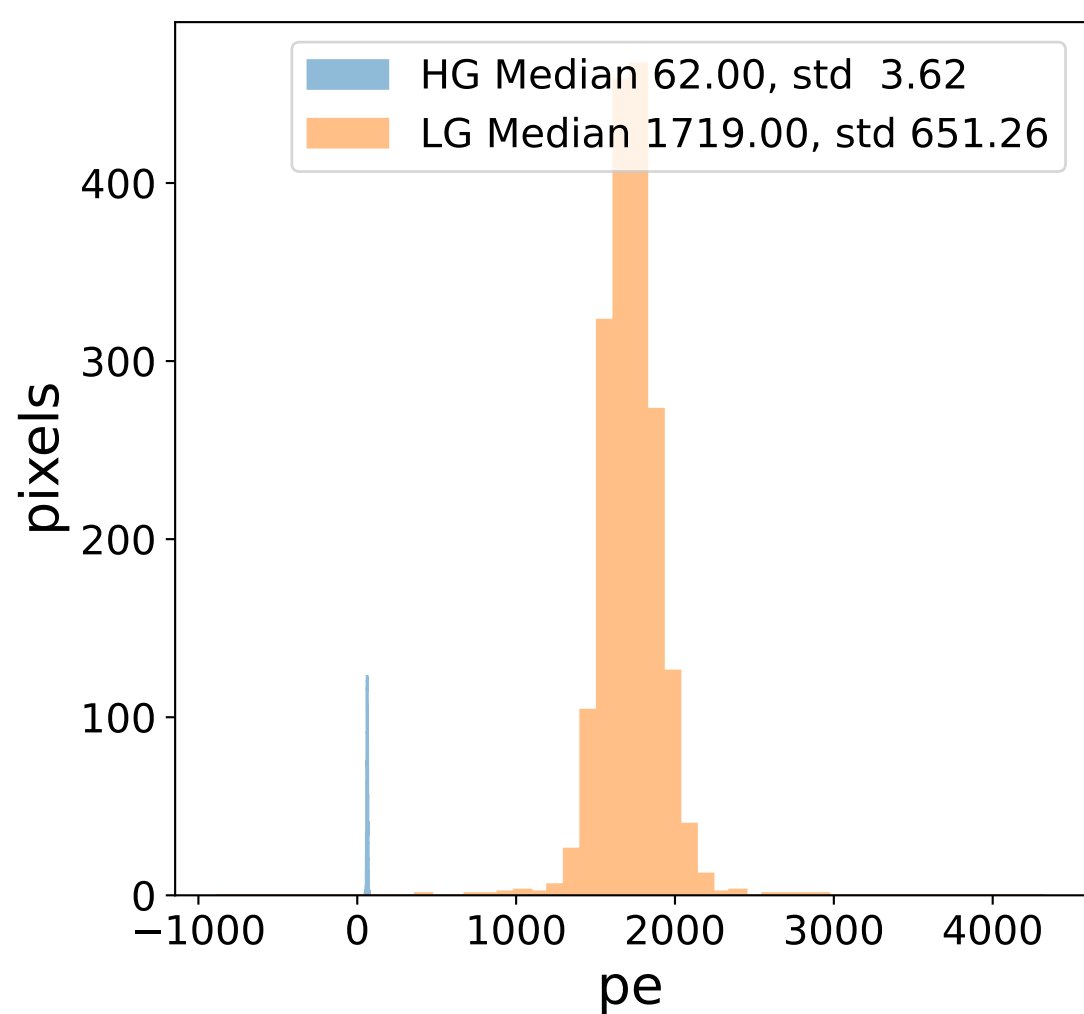
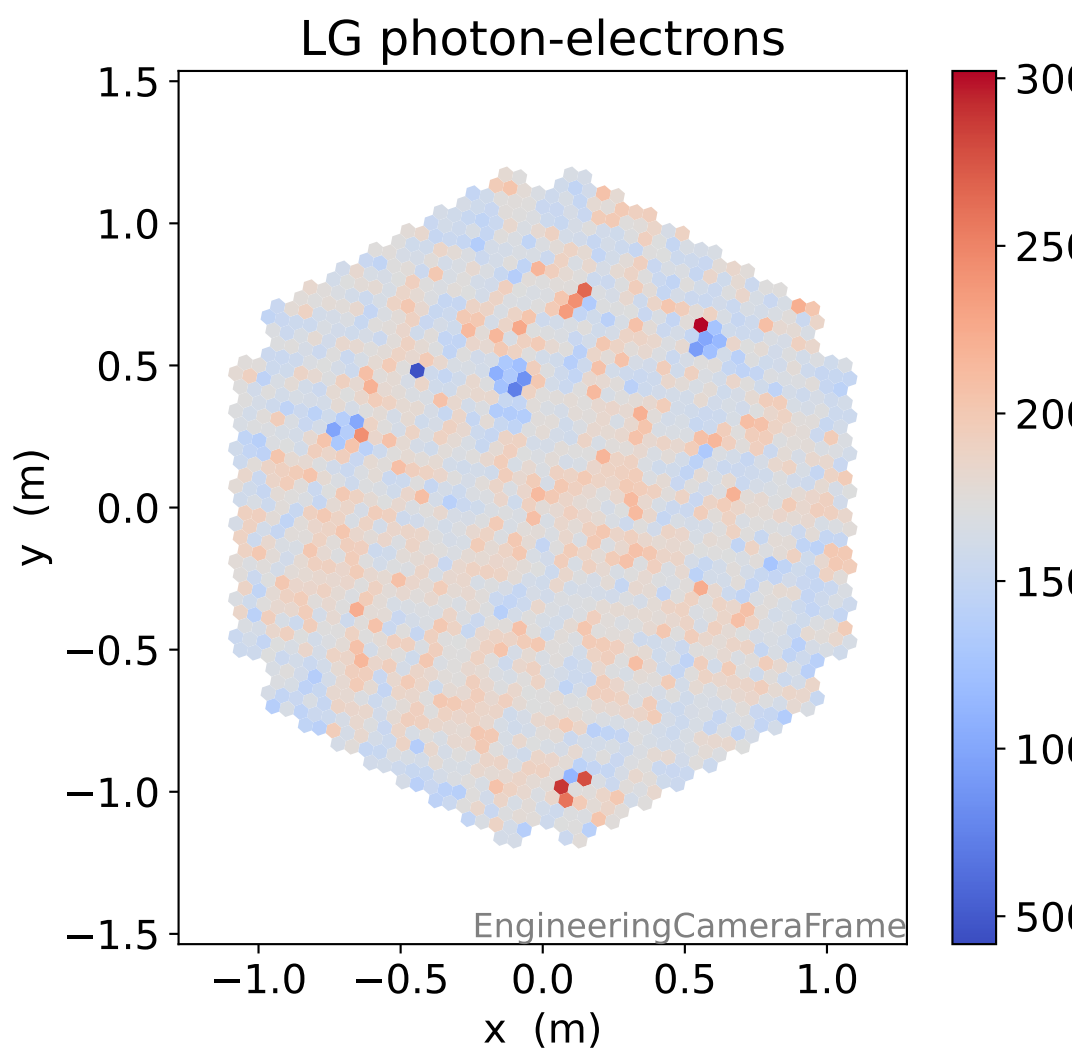
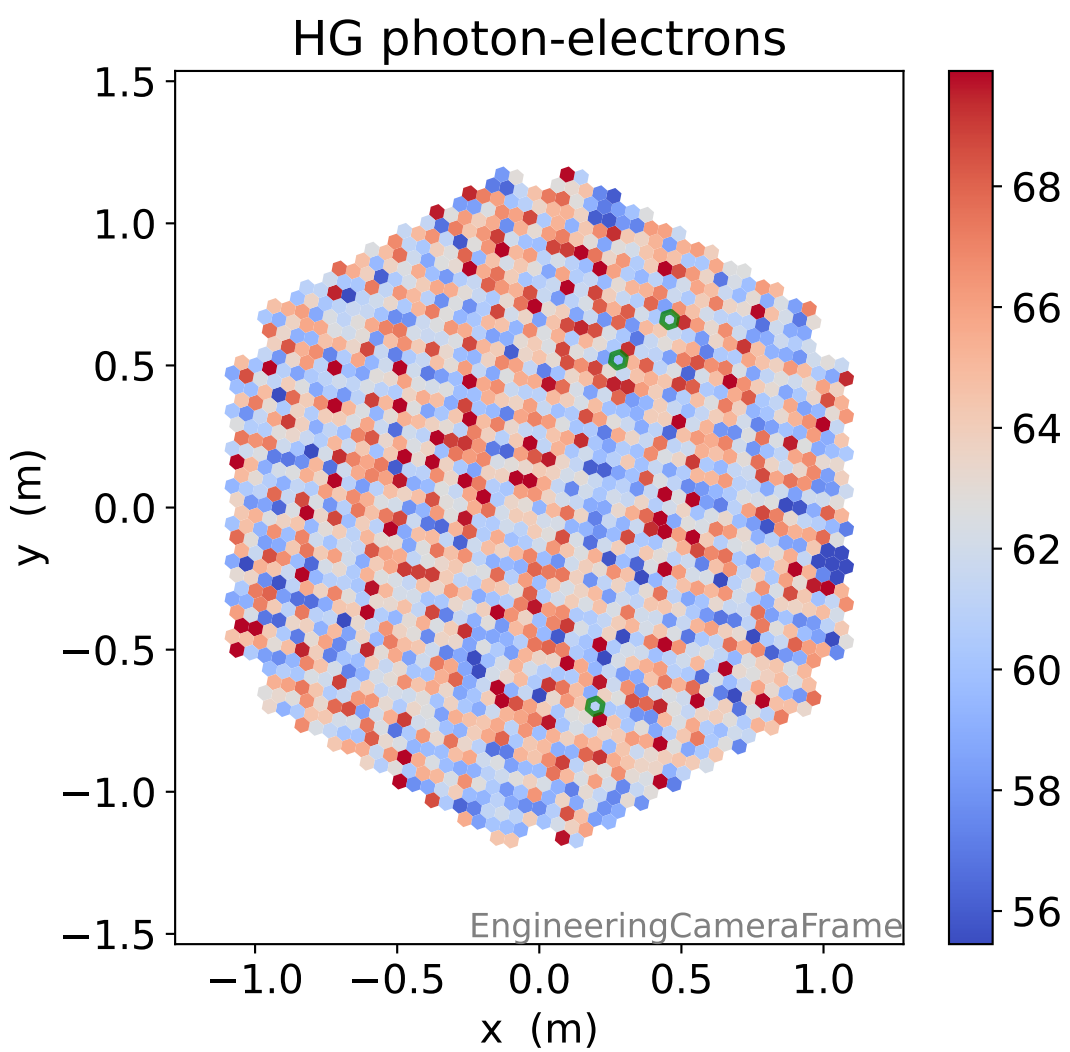
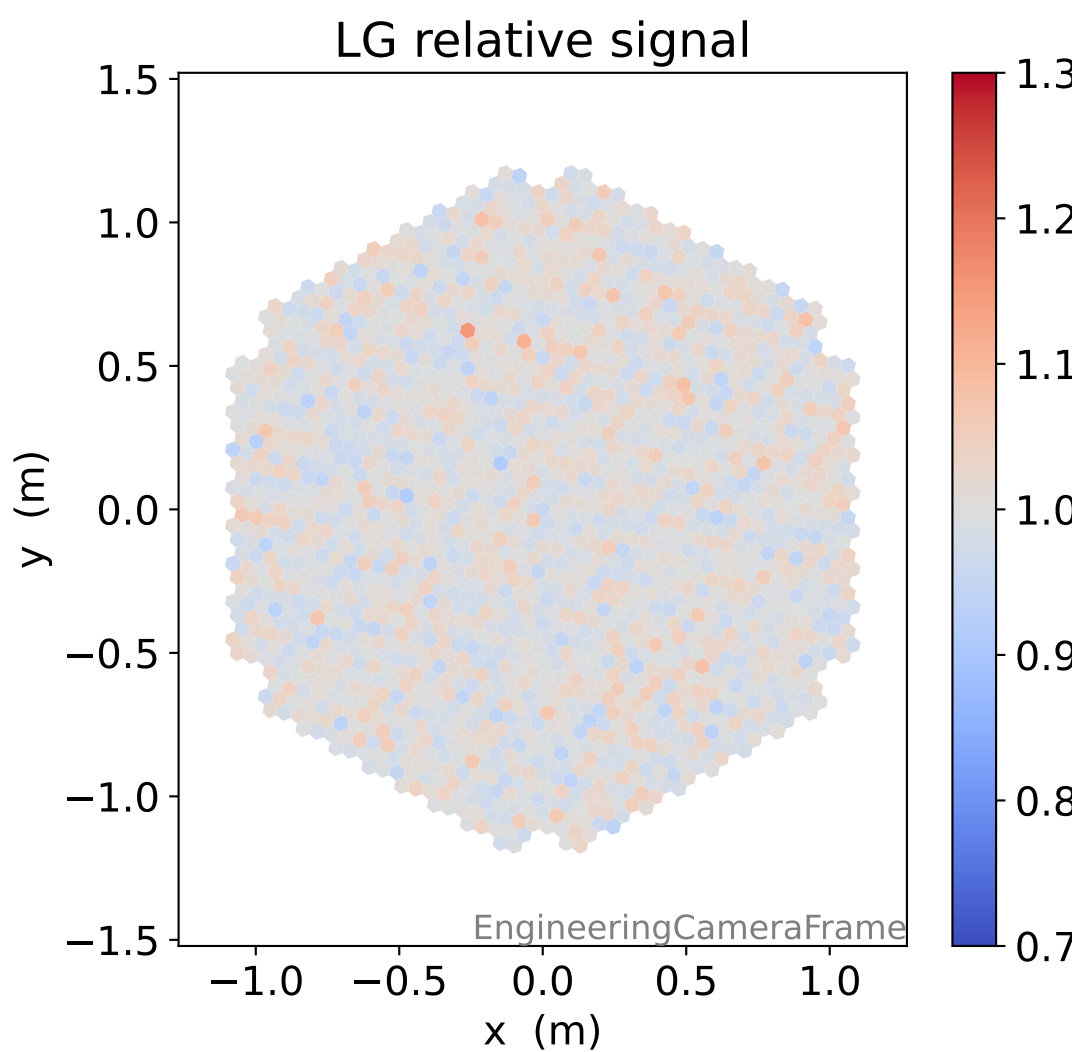
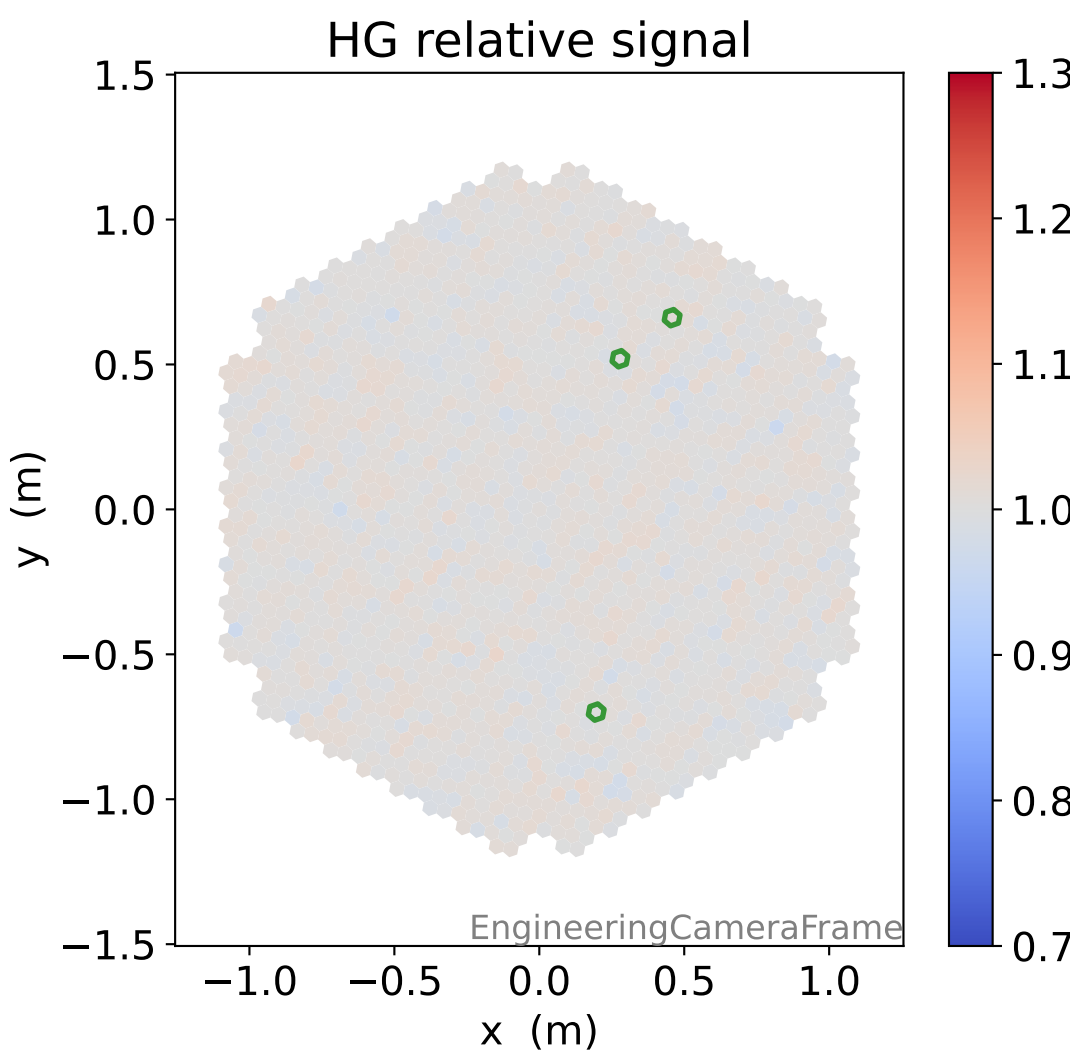
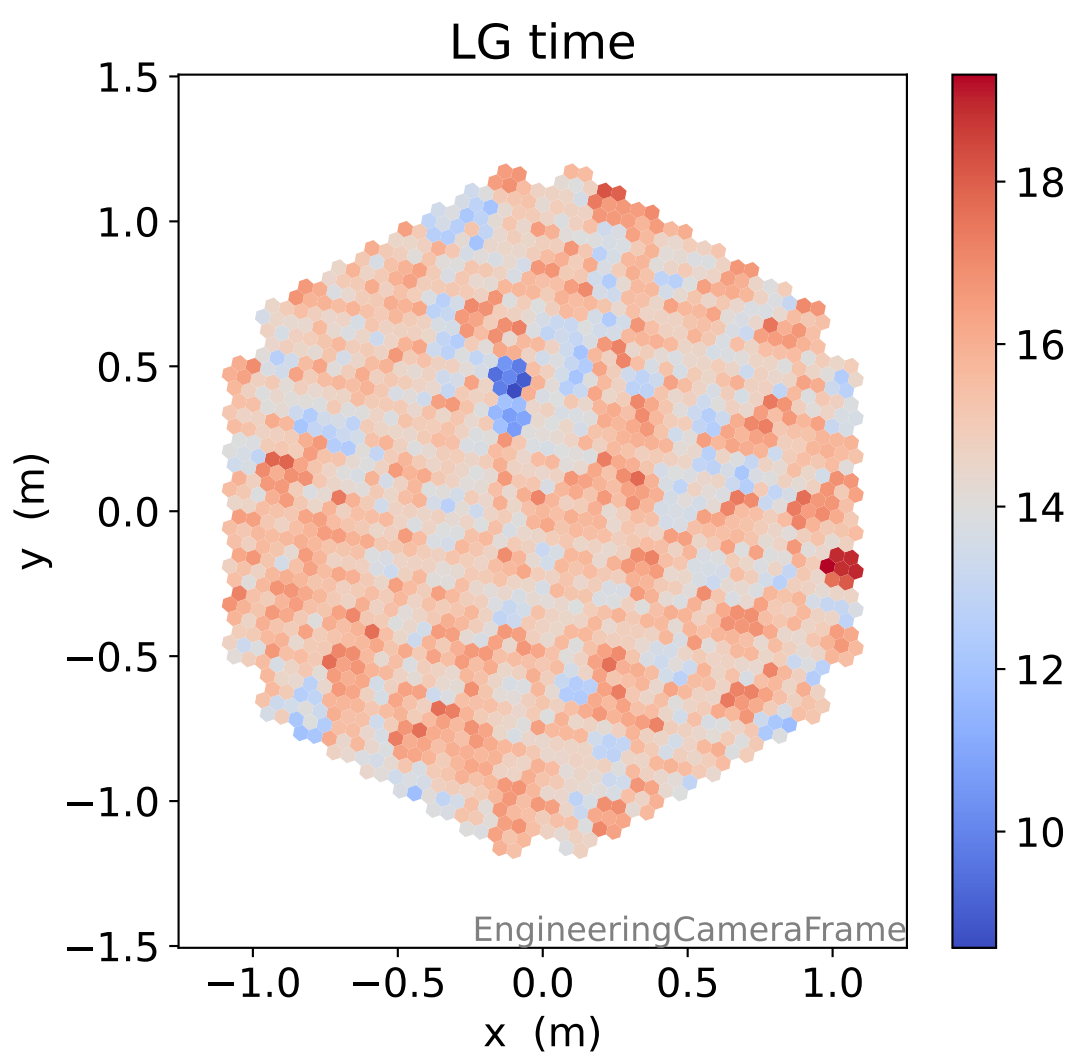
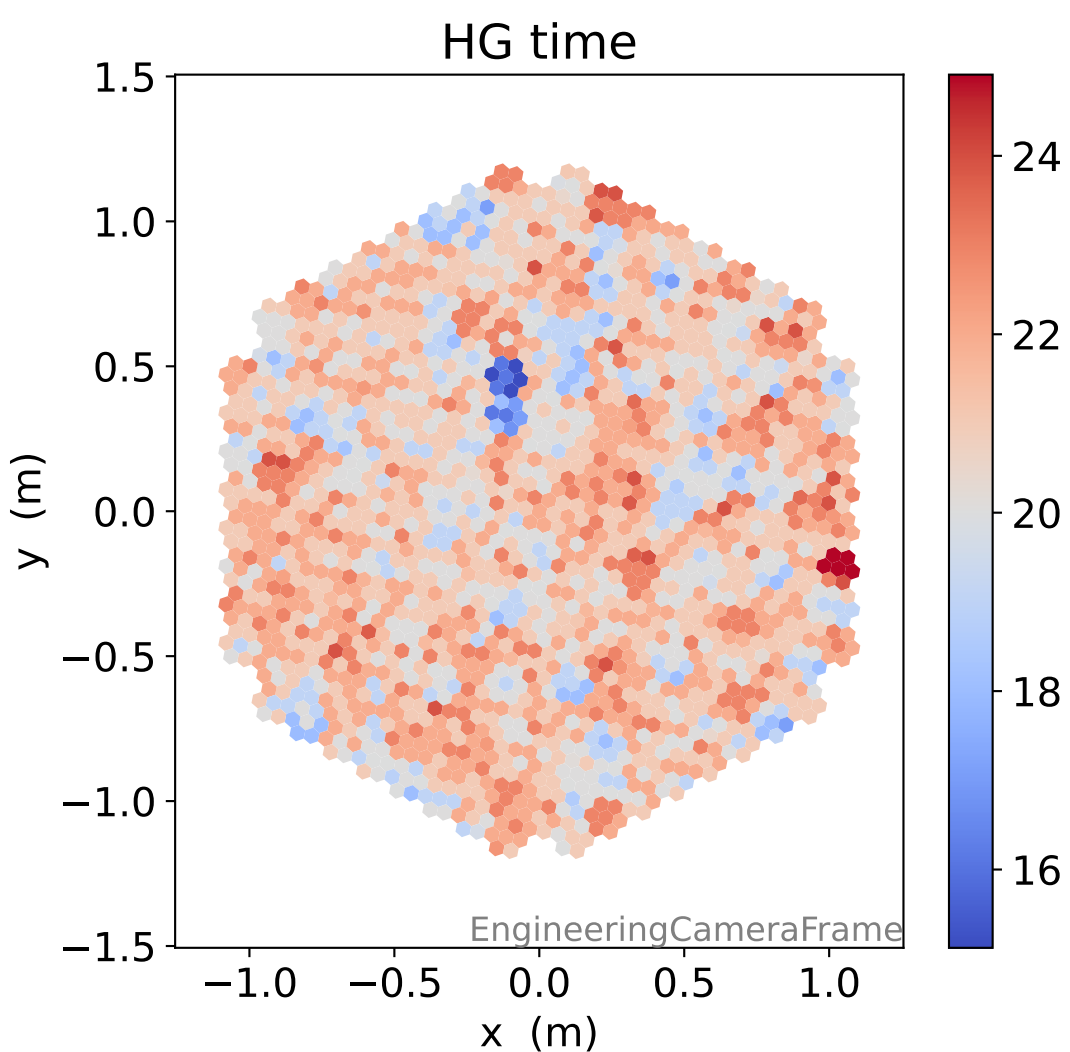
### HG pedestal std [ADC]



### LG pedestal std [ADC]

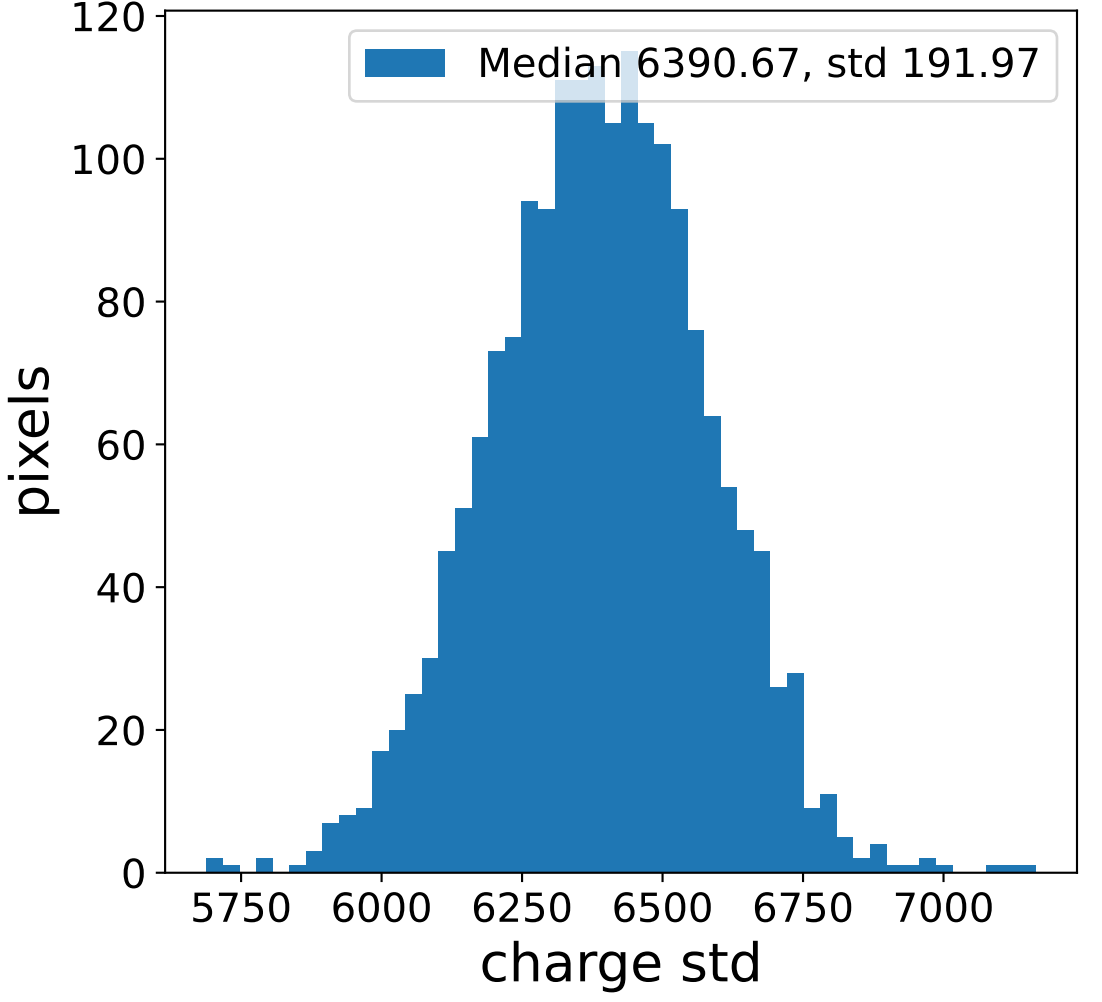
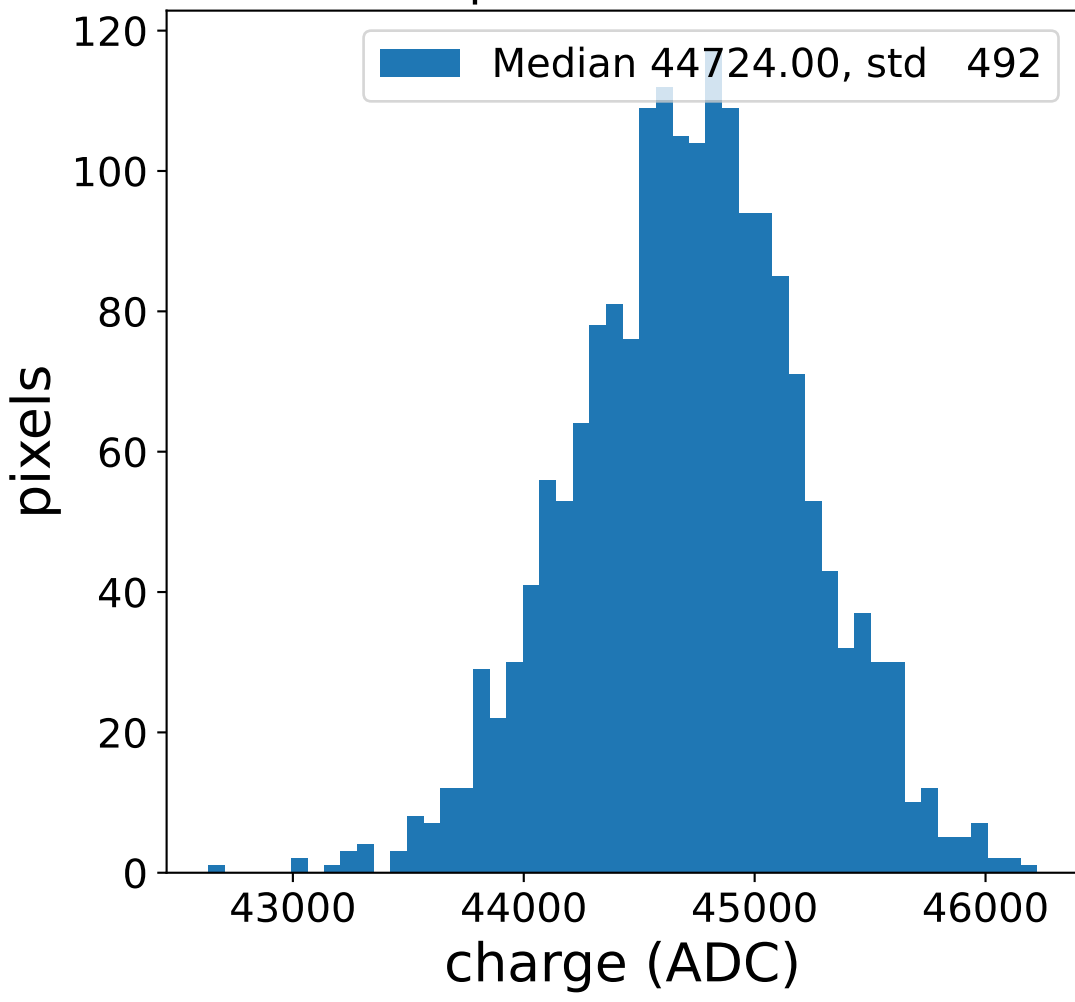


# Run 8919

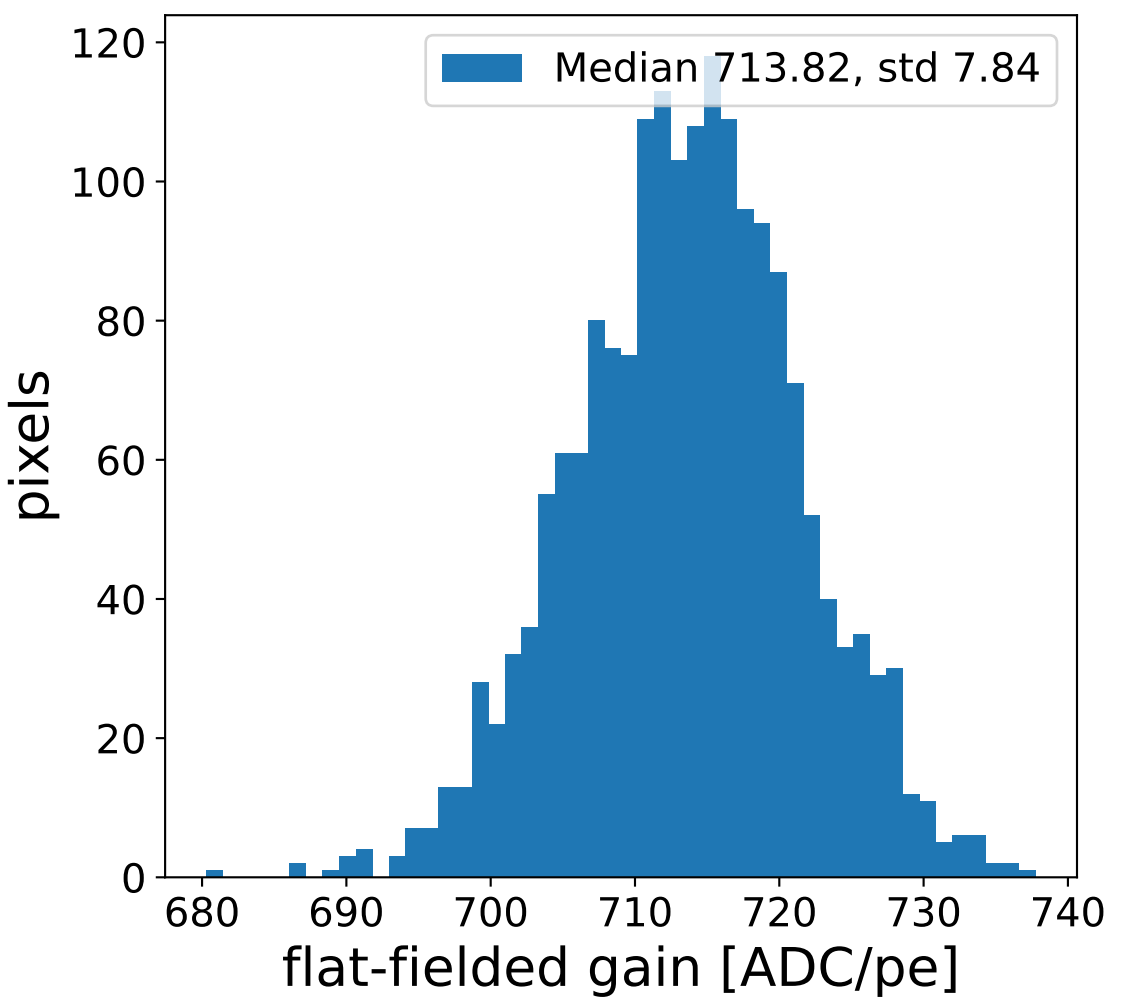
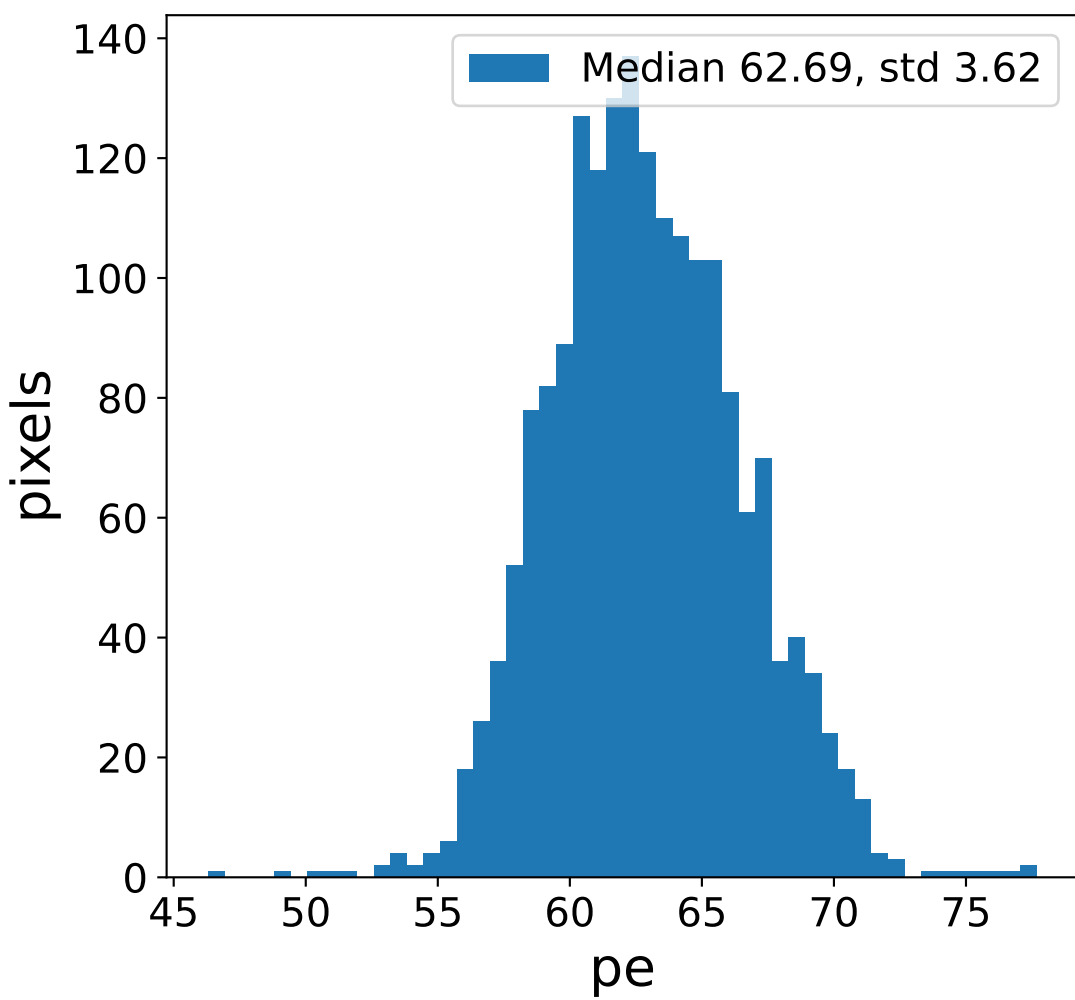
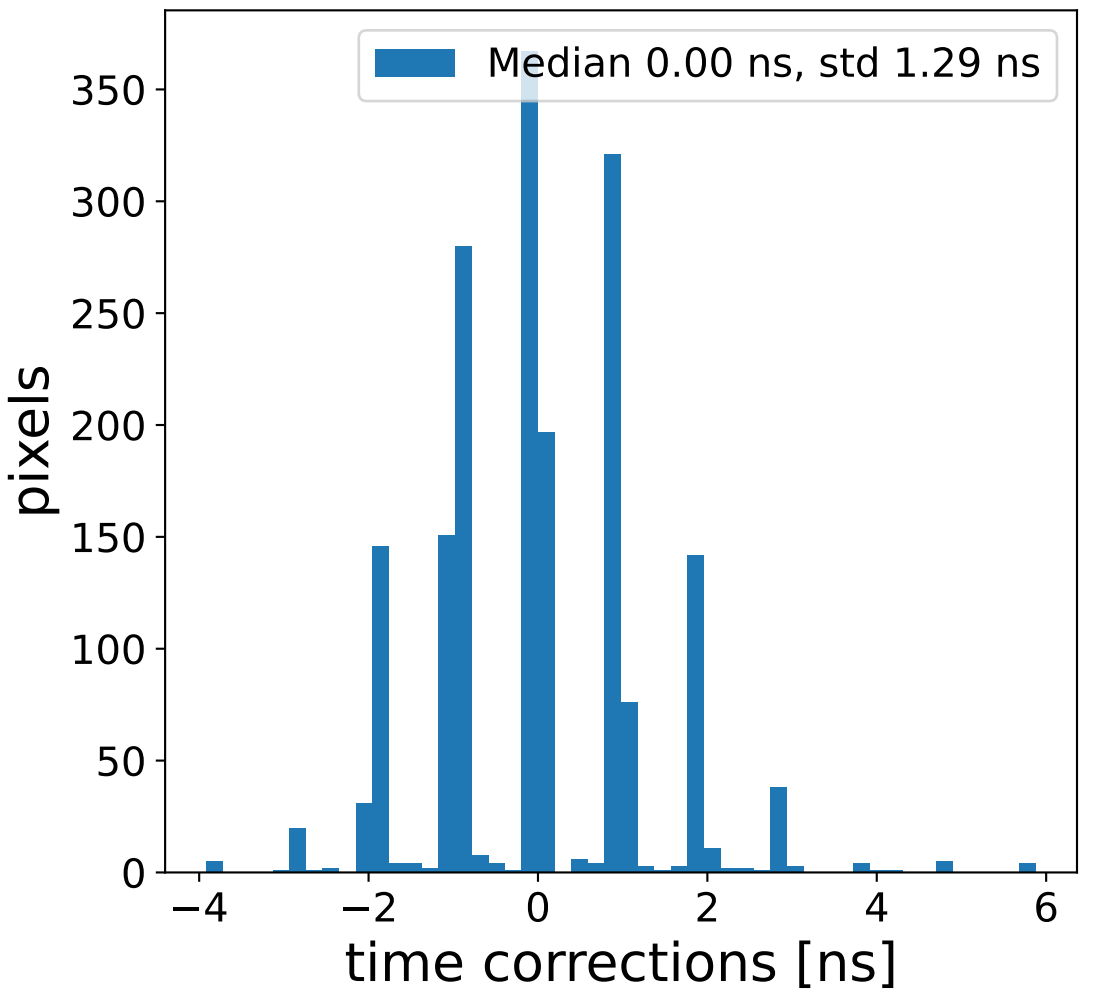
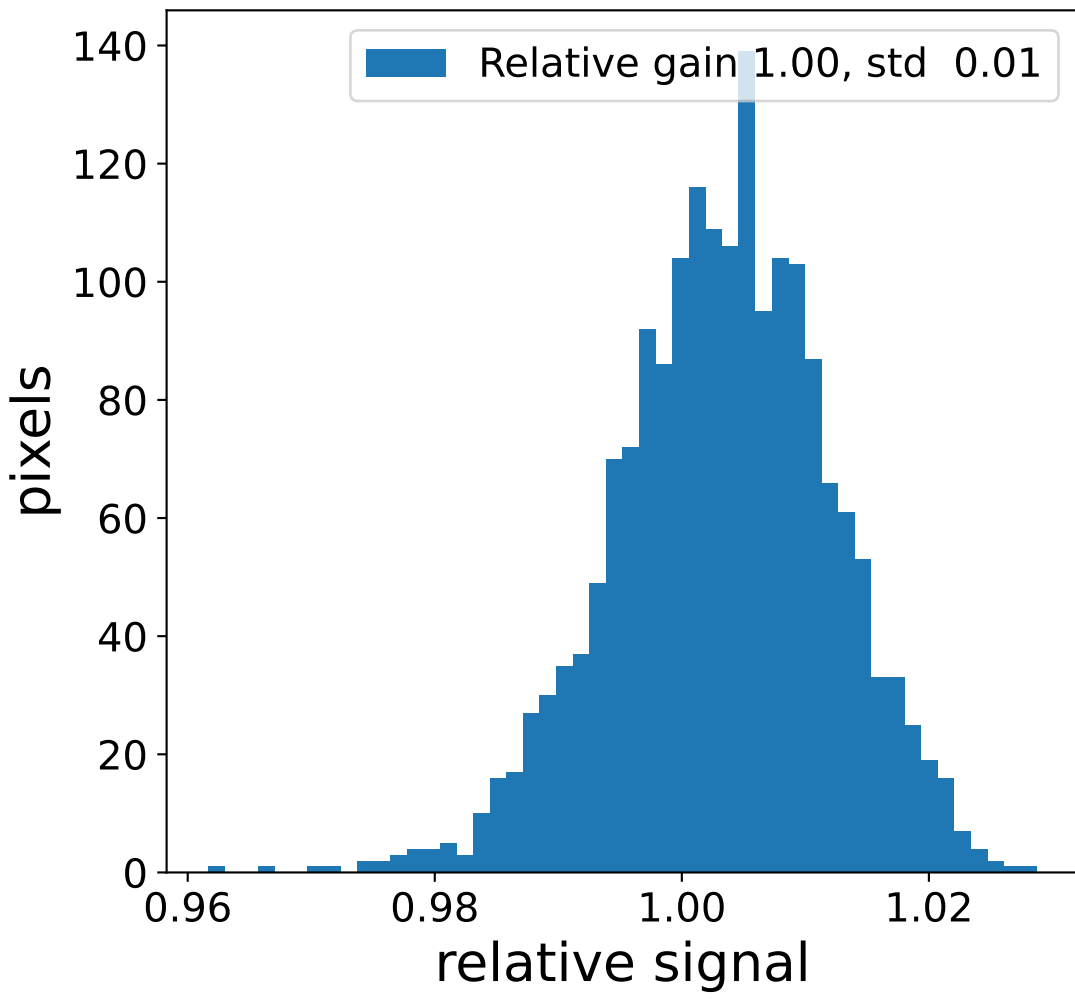
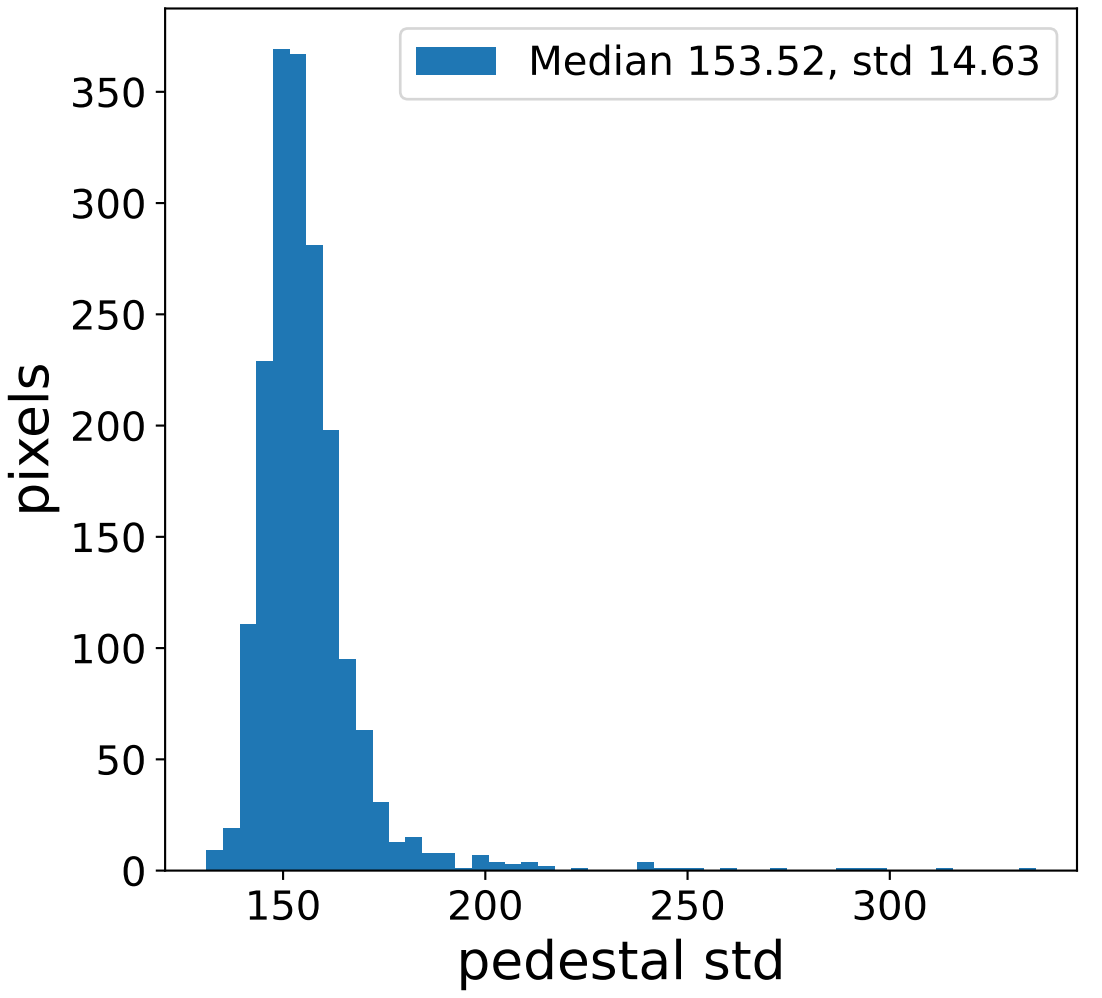
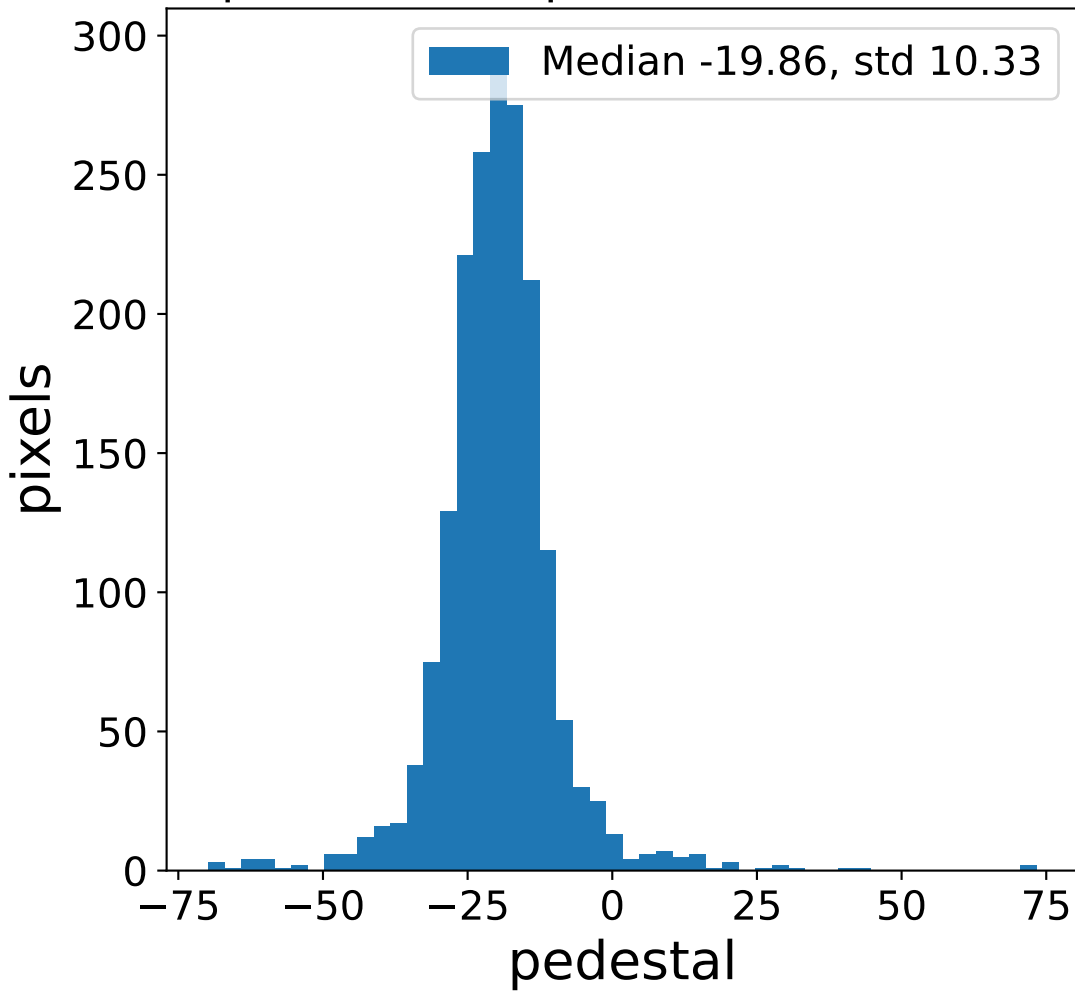


# Run 8919 channel: HG

FF sample of 10000 events

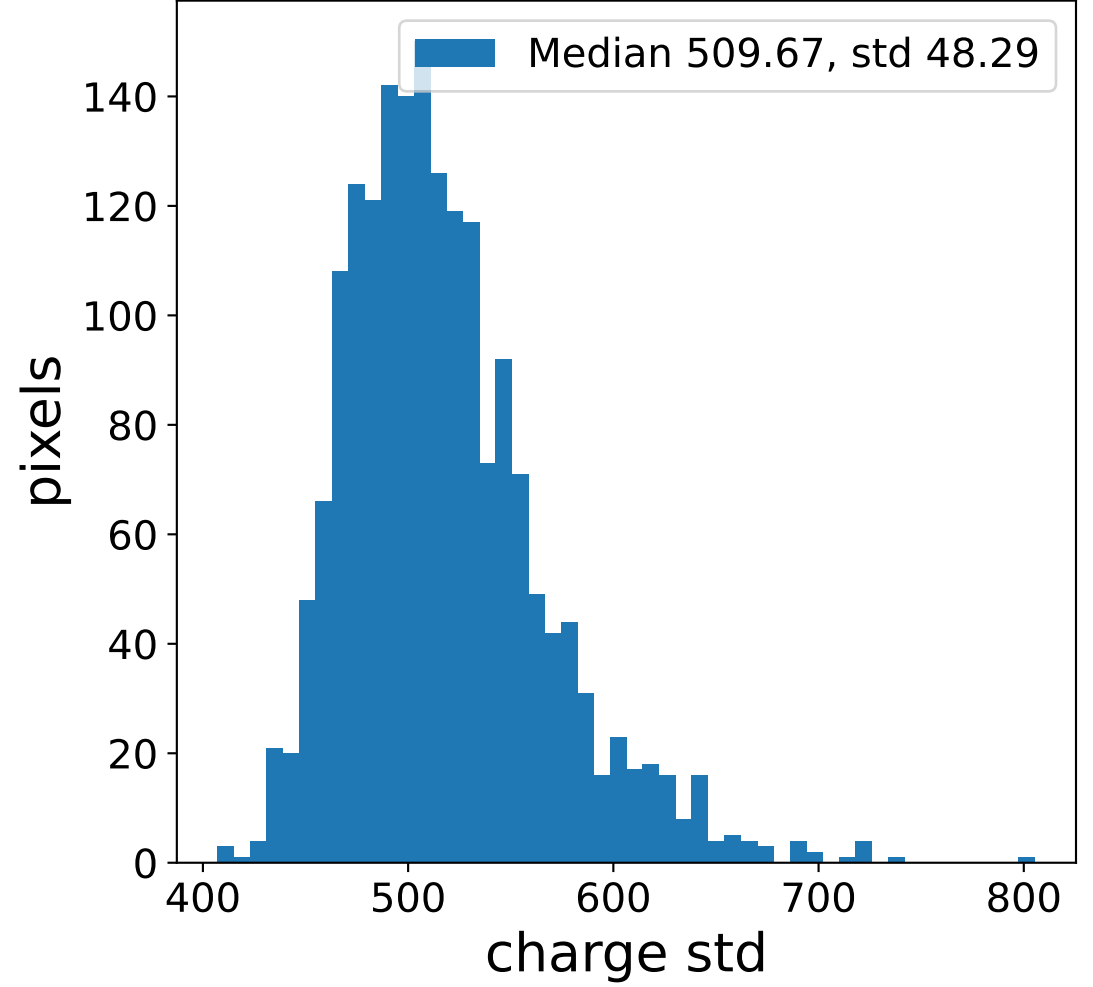
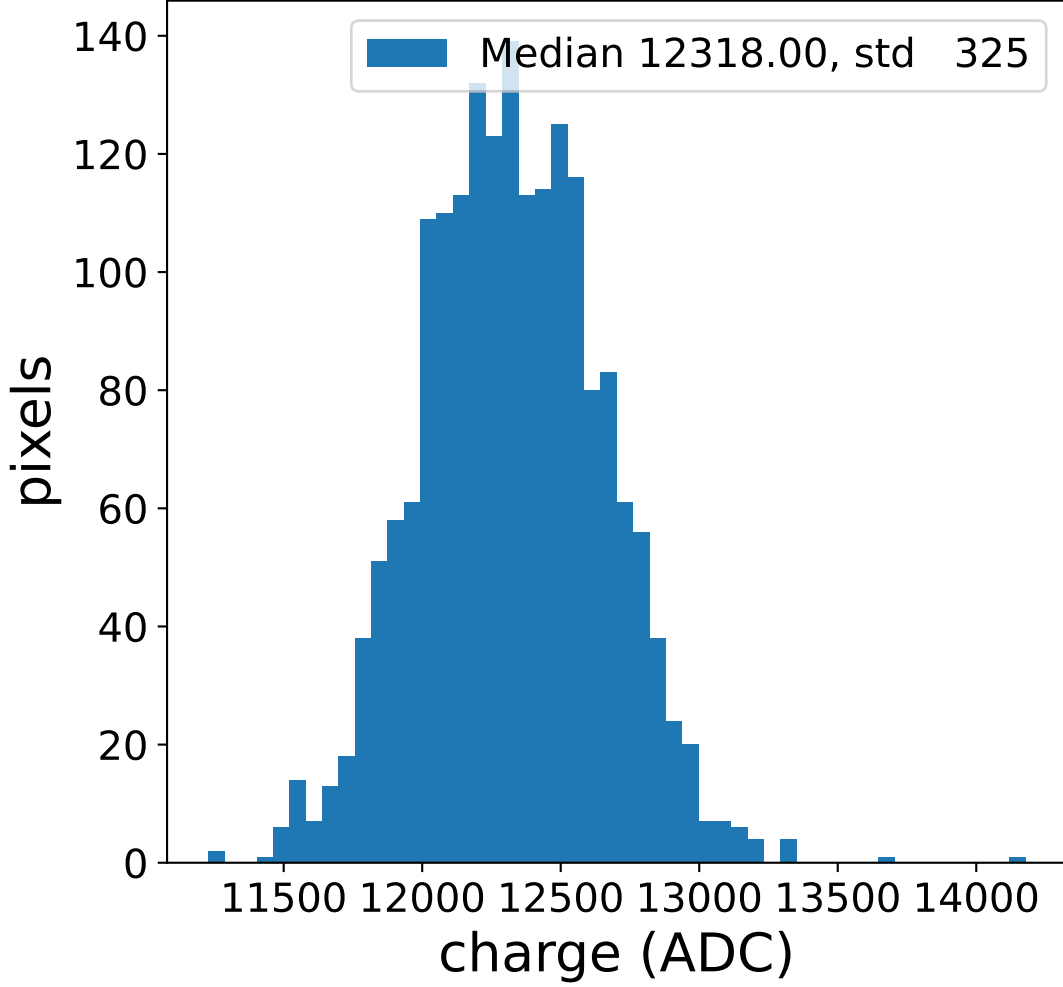


pedestal sample of 10000 events



# Run 8919 channel: LG

FF sample of 10000 events



pedestal sample of 10000 events

