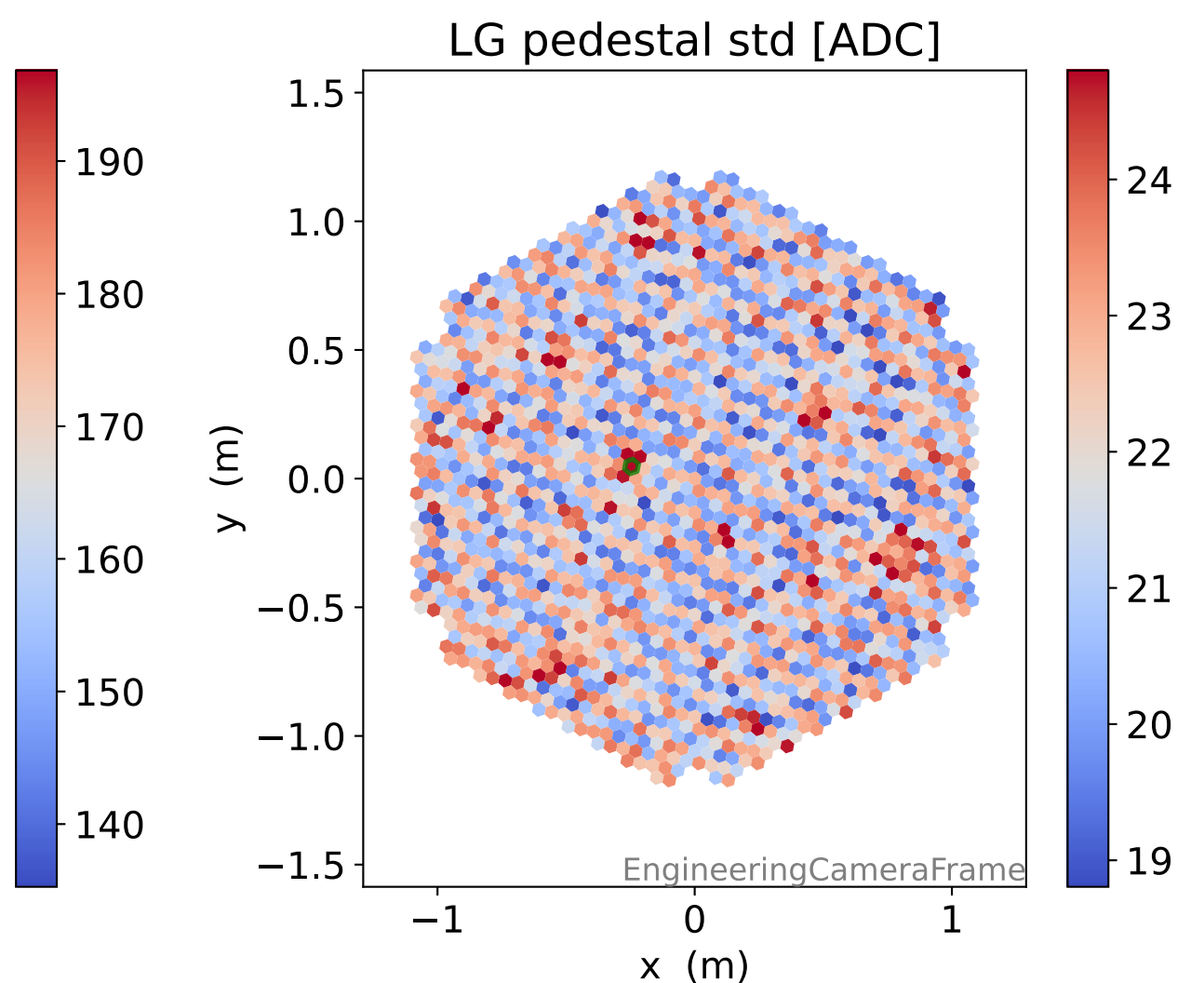
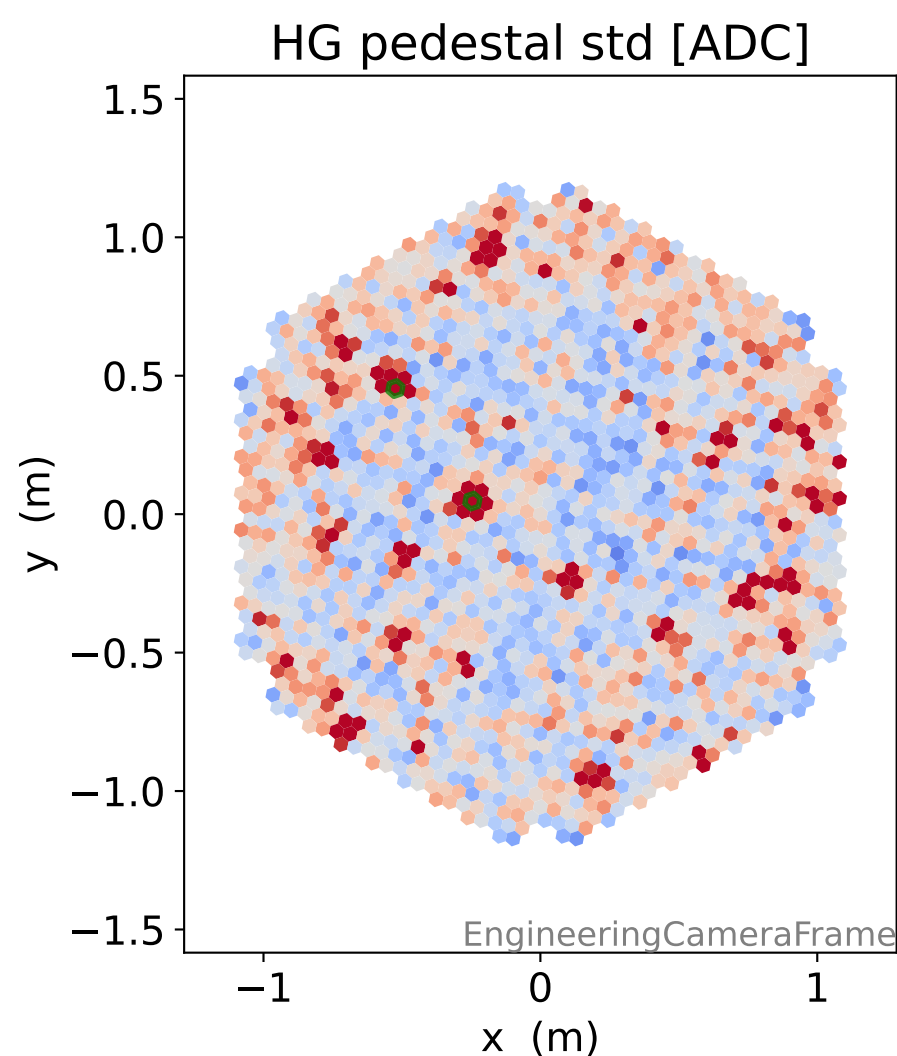
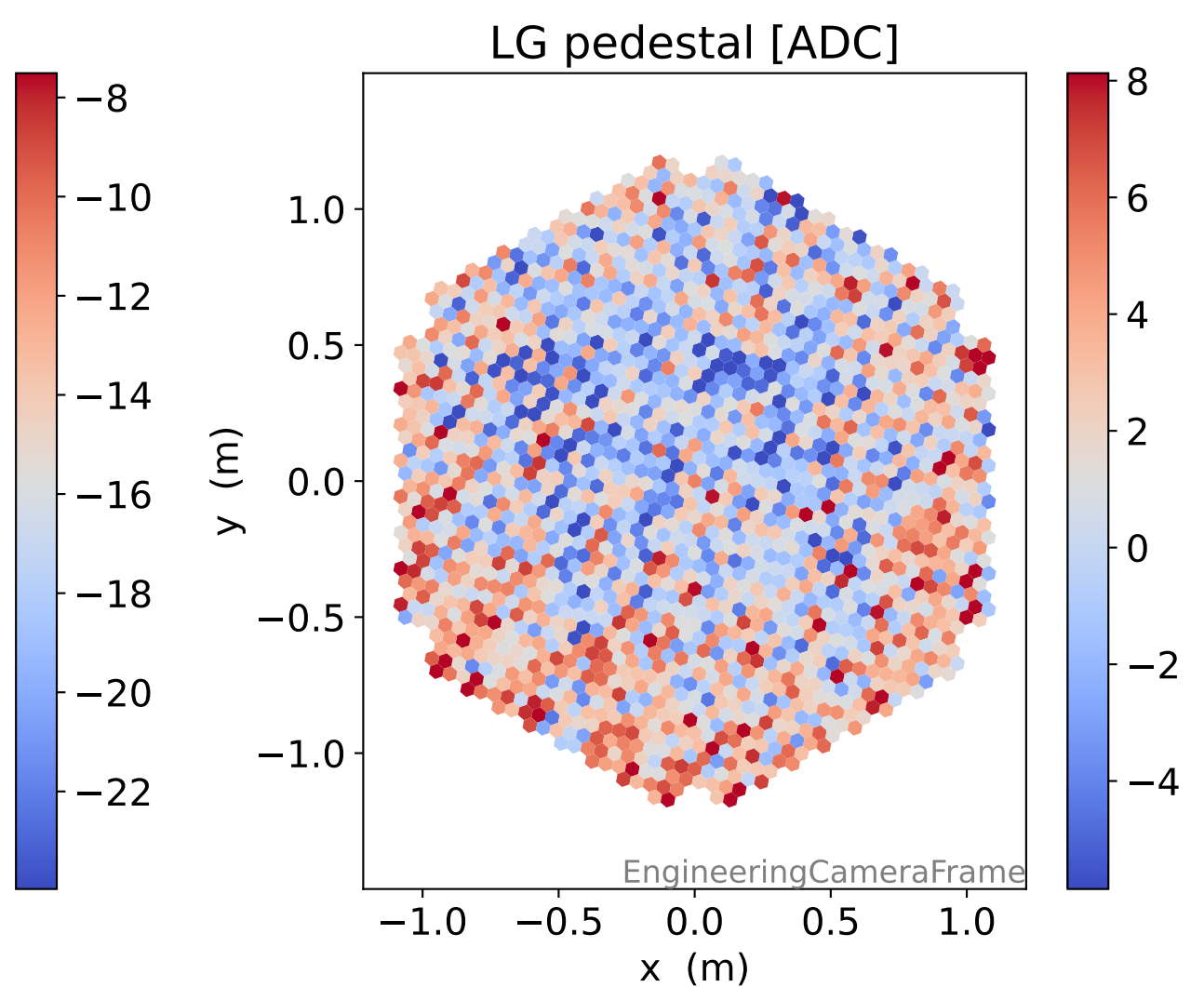
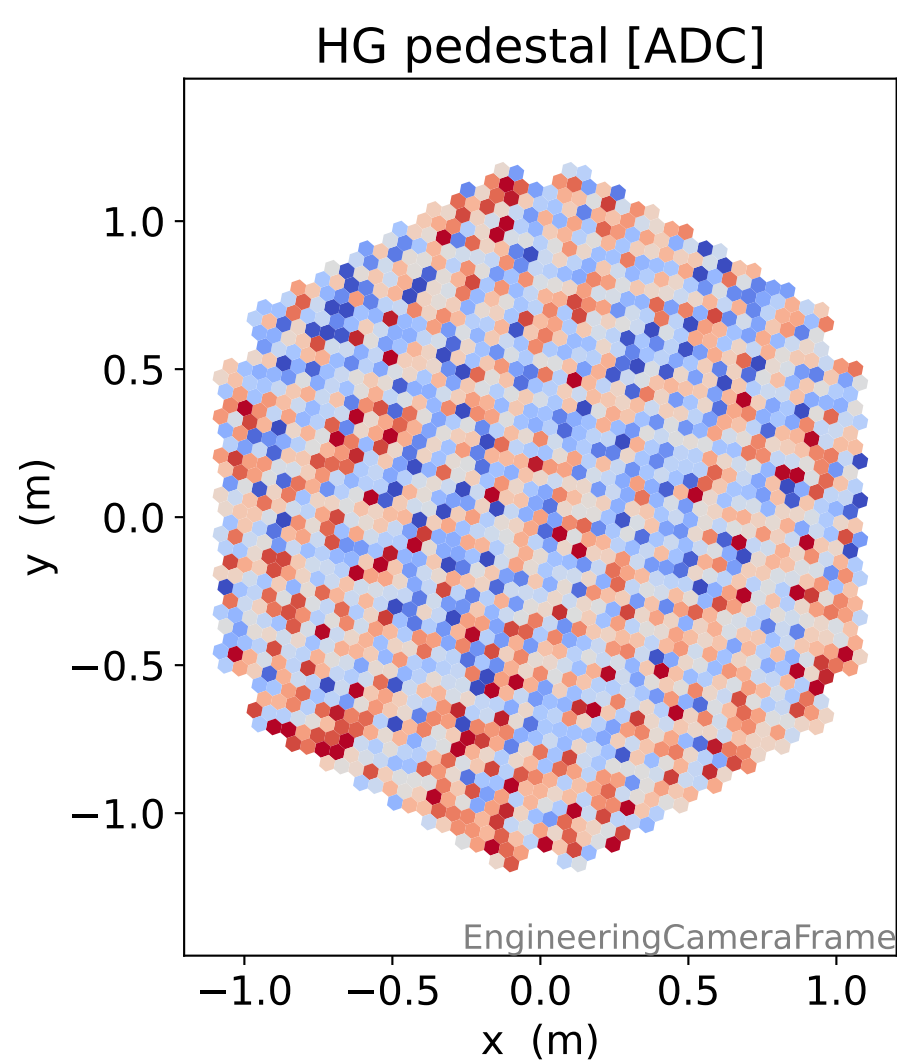
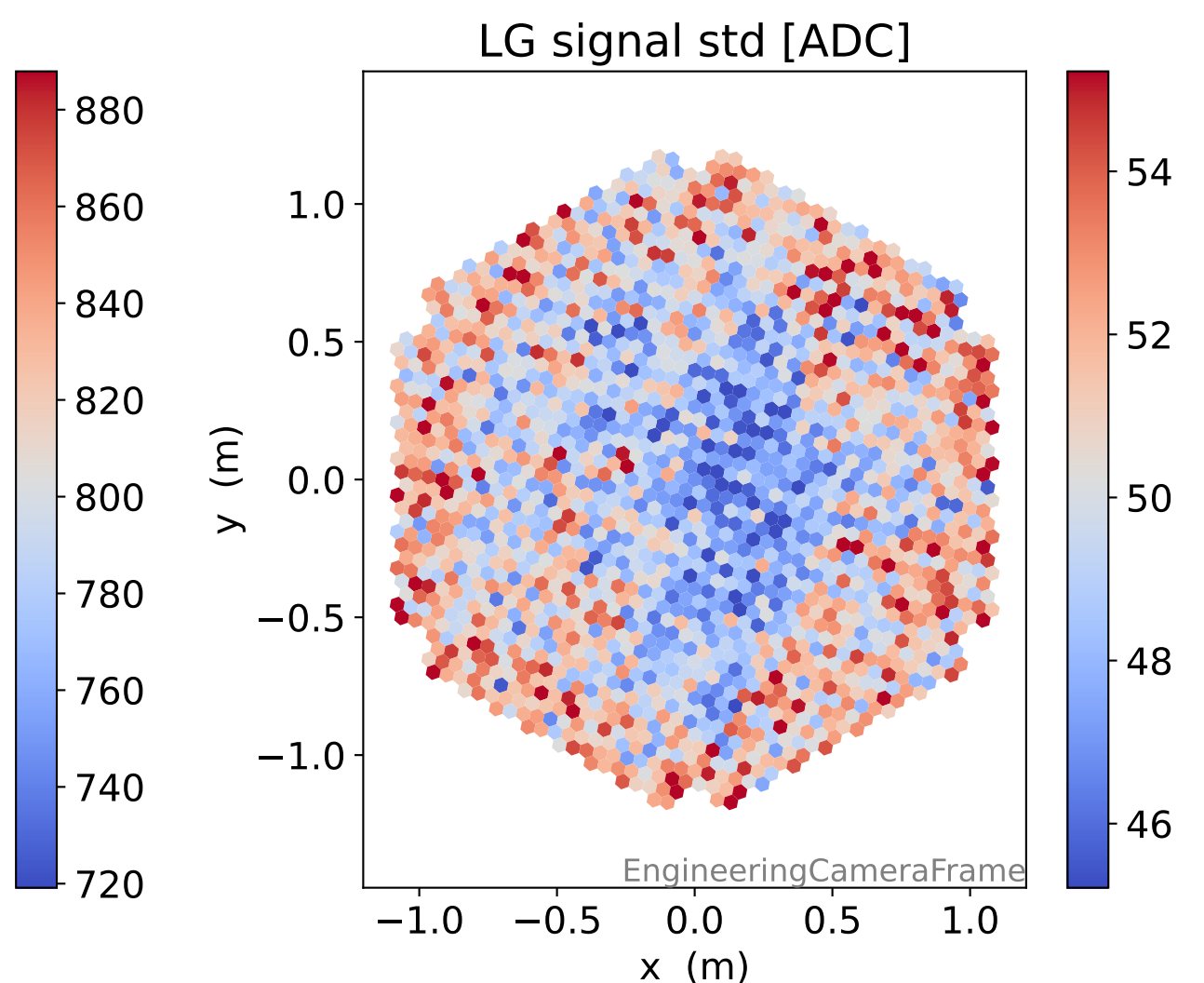
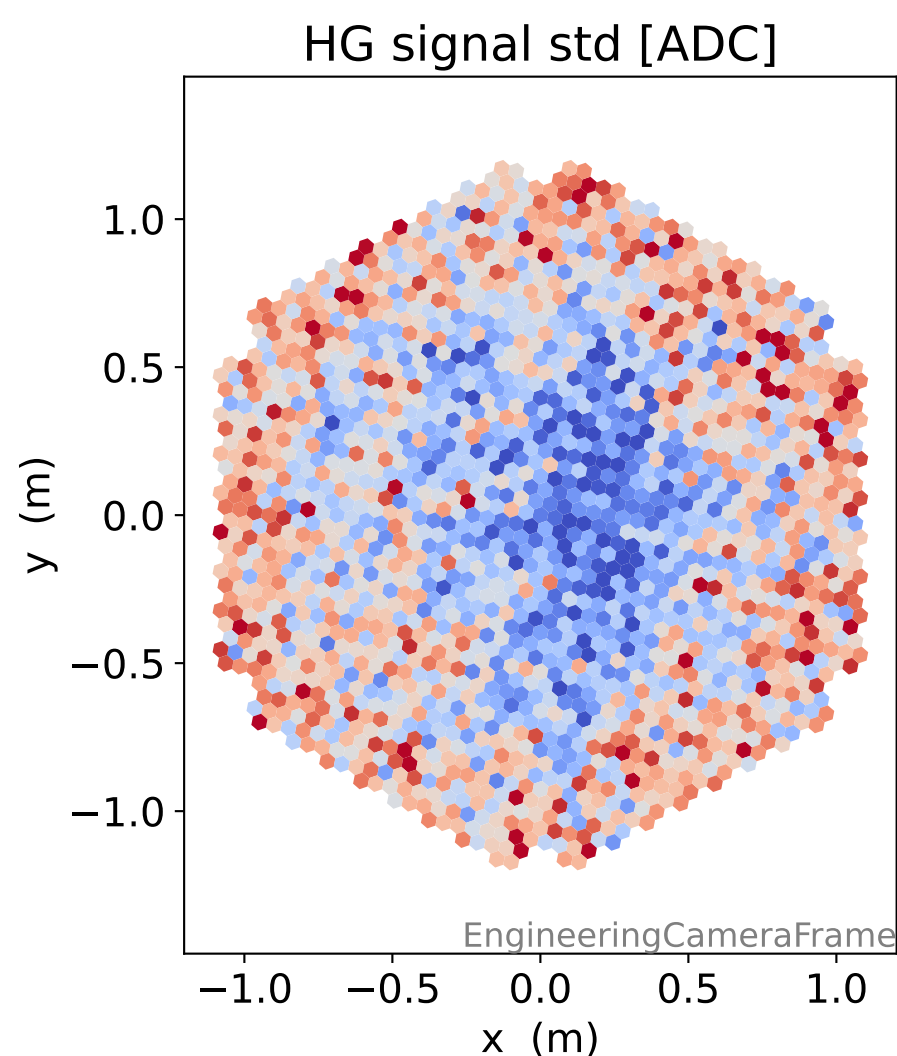
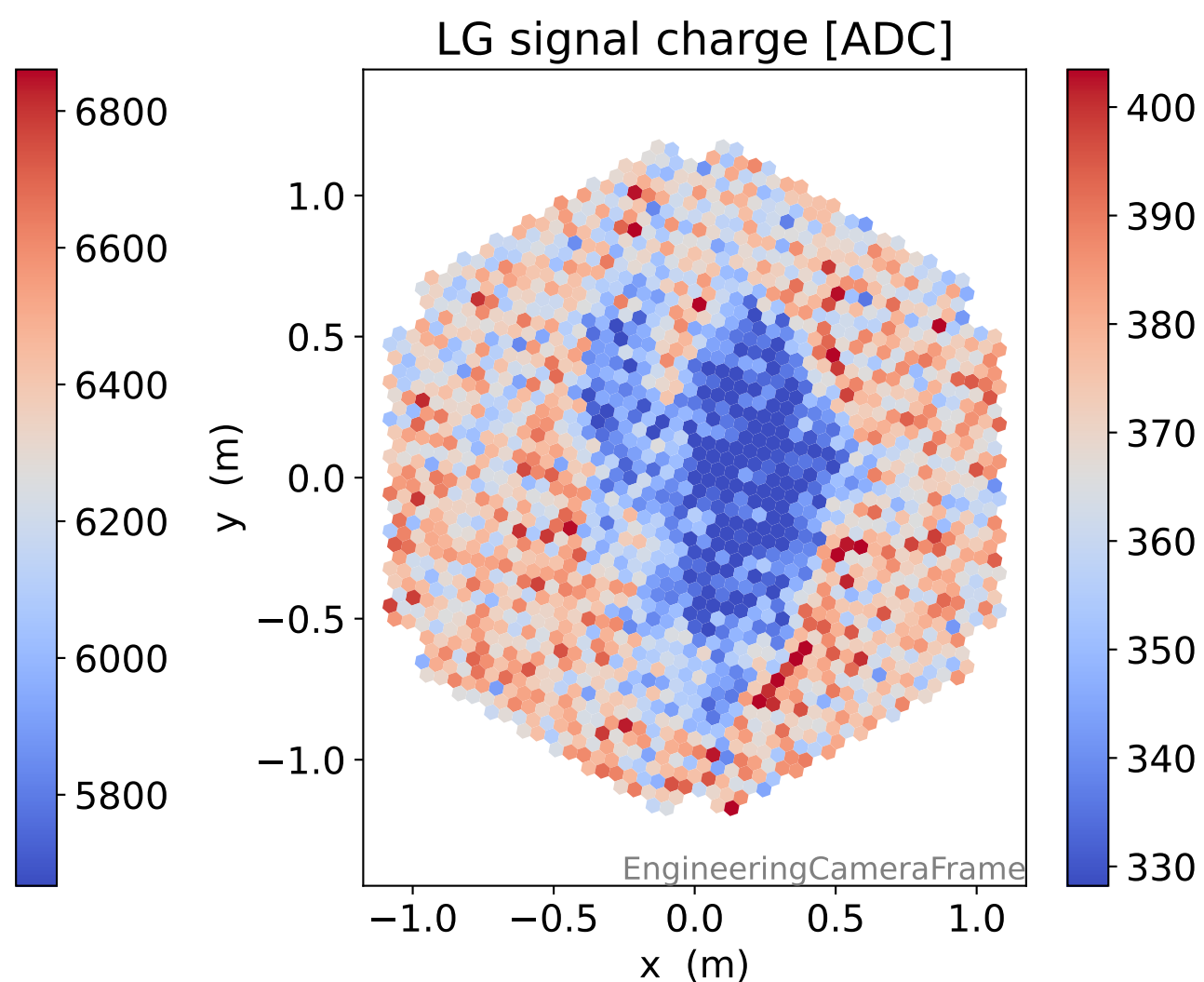
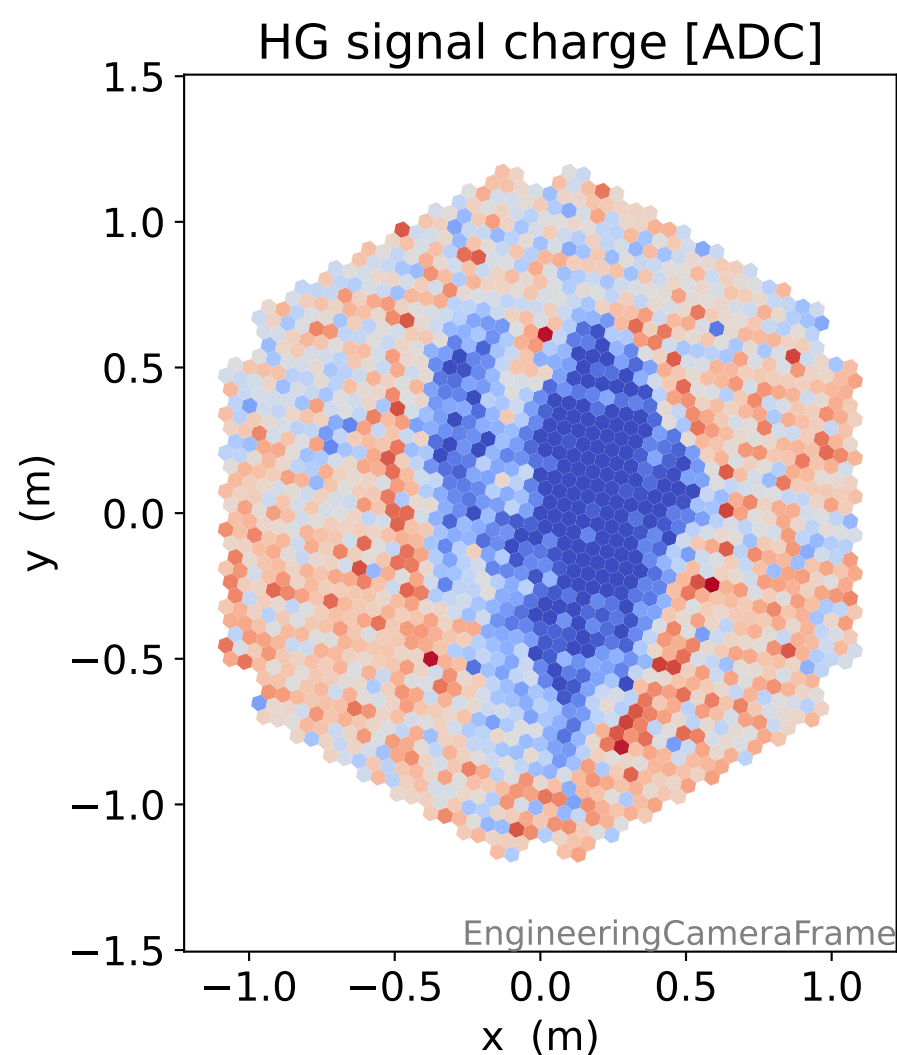
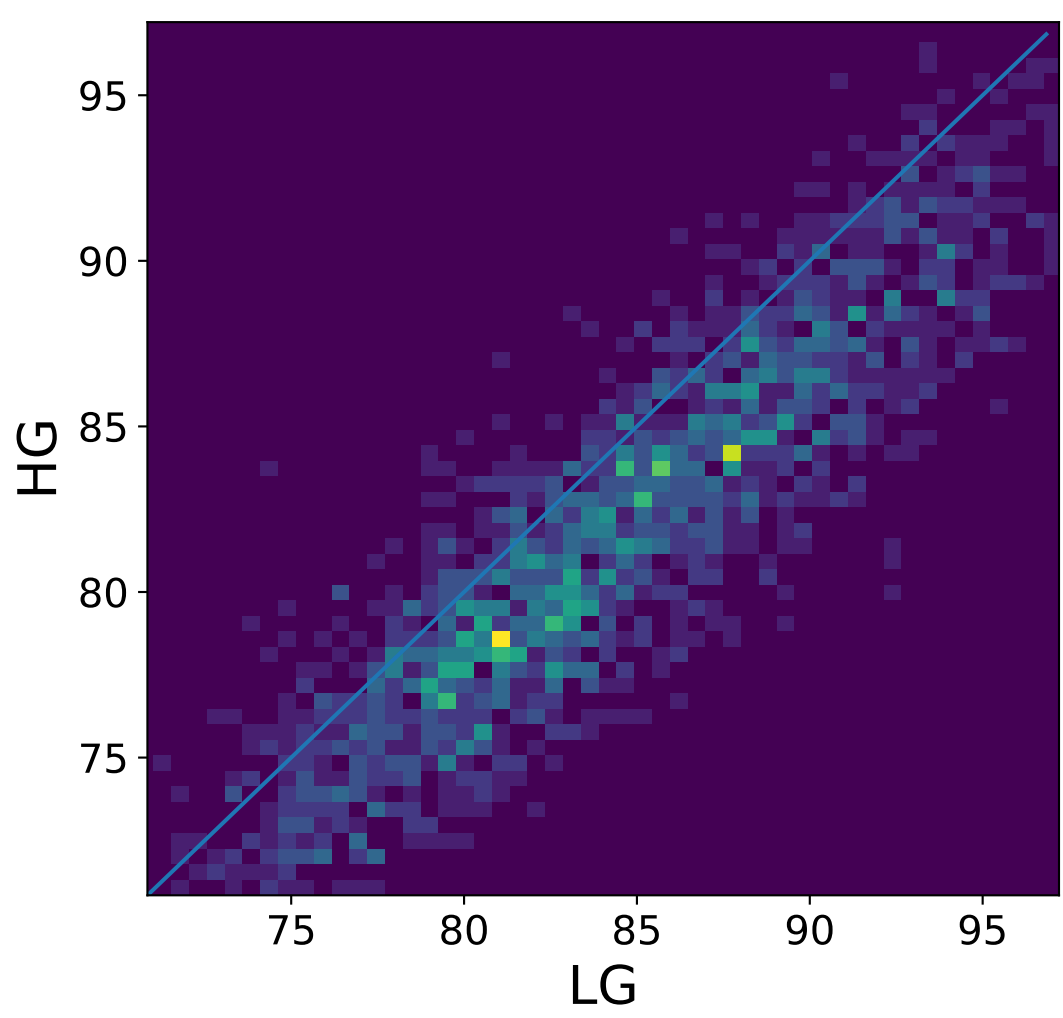
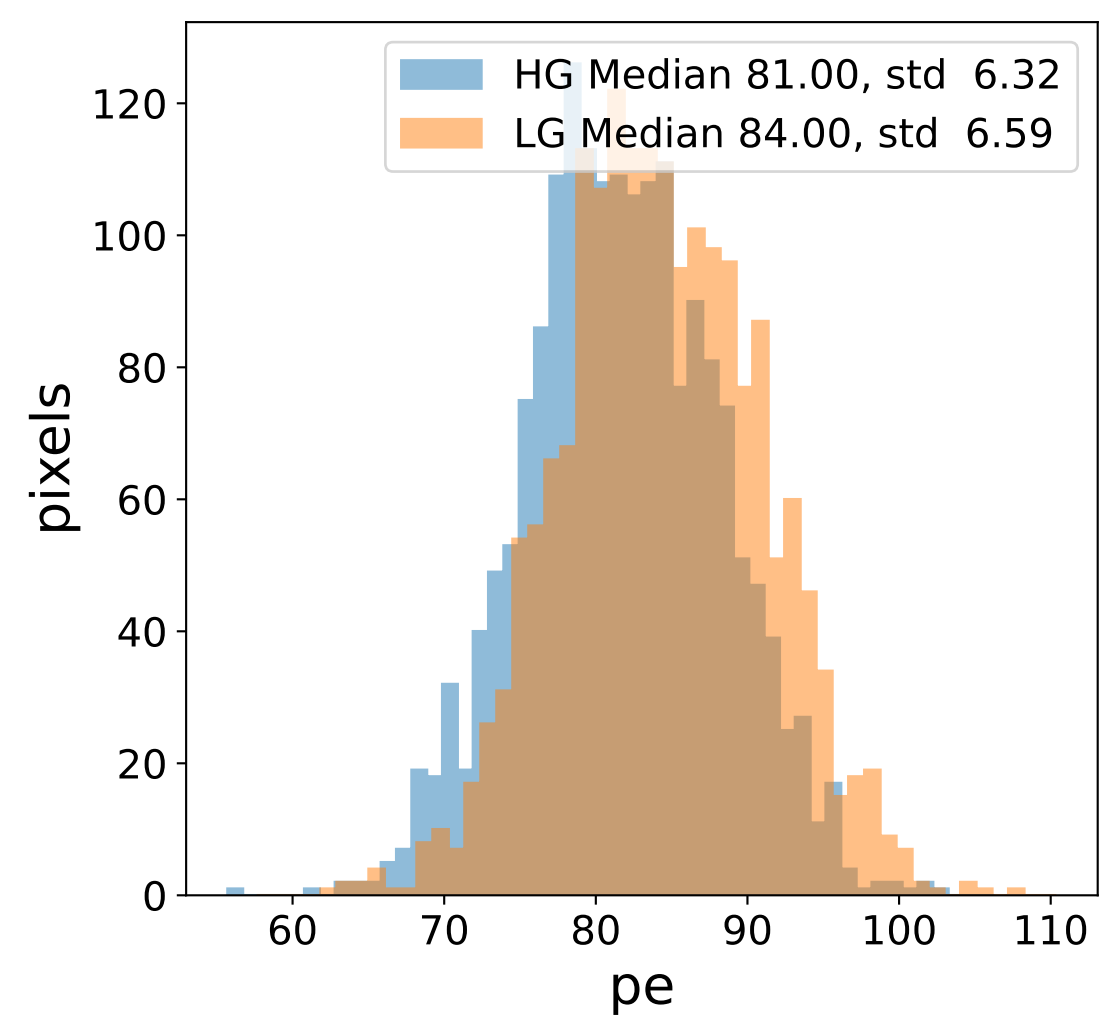
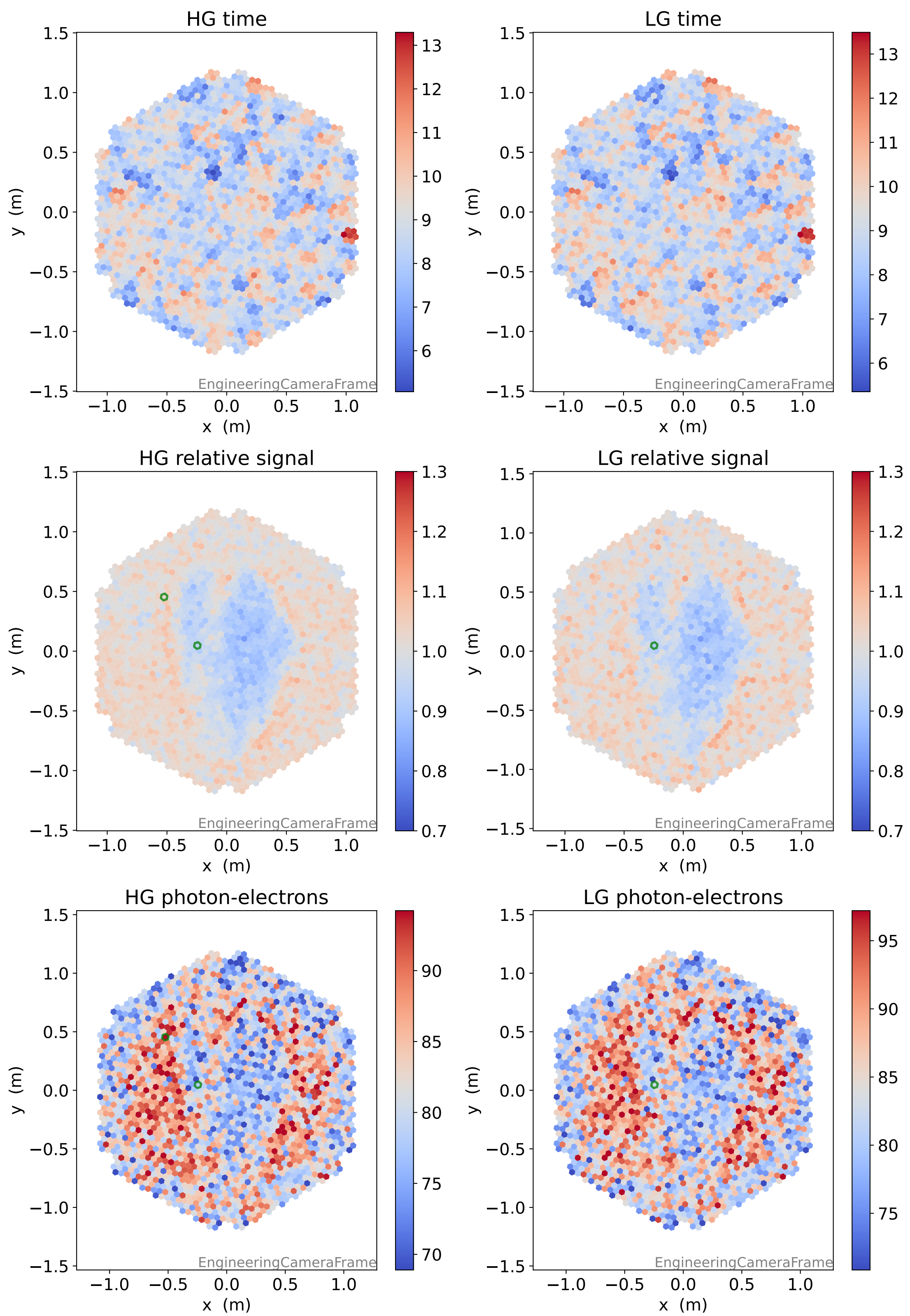


# Run 12055

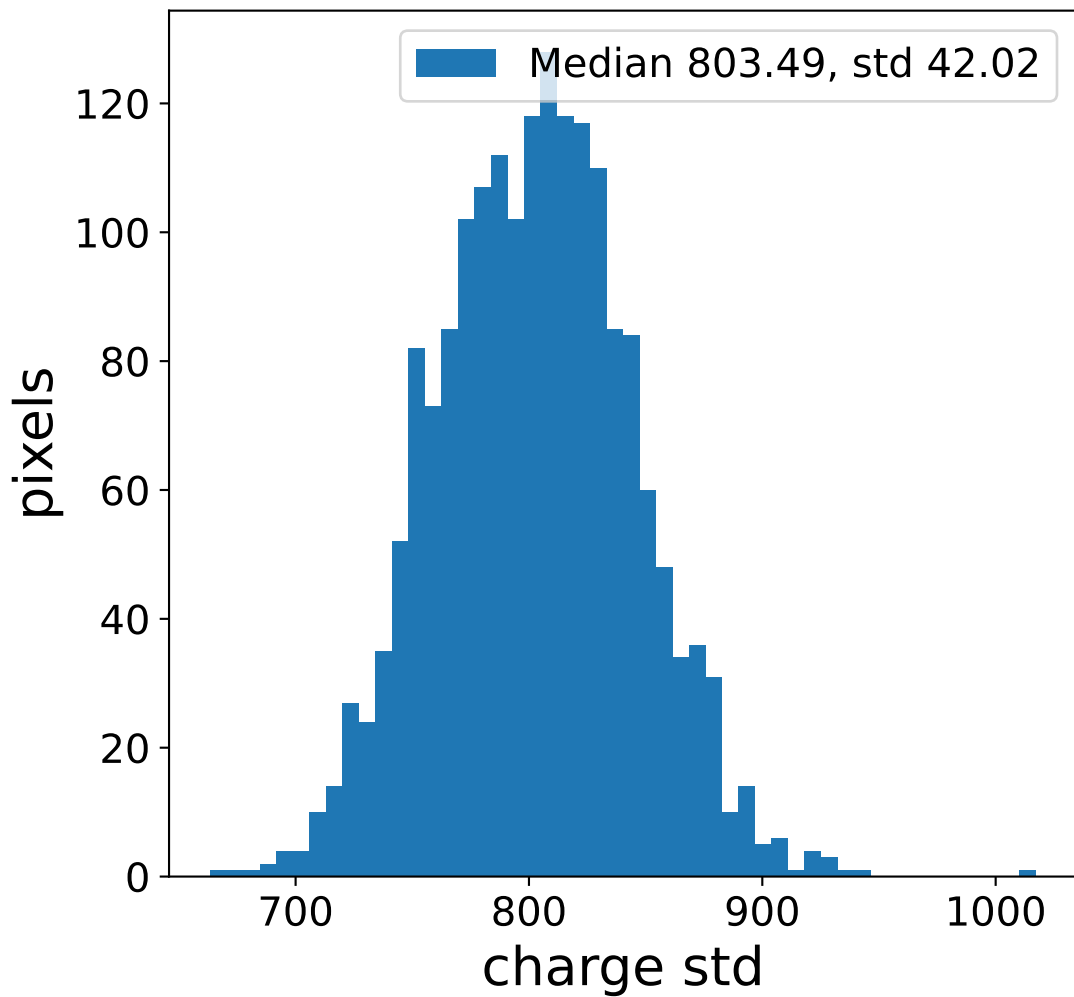
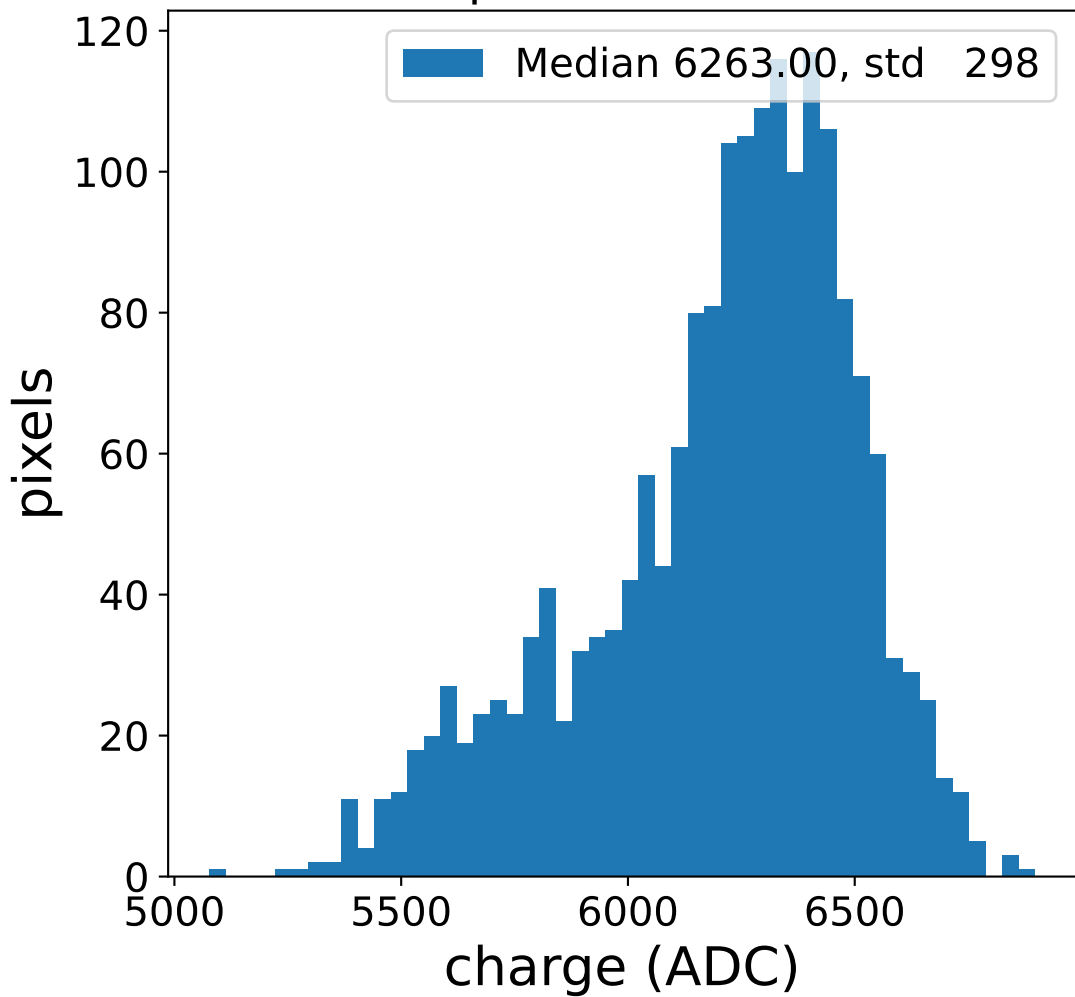


# Run 12055

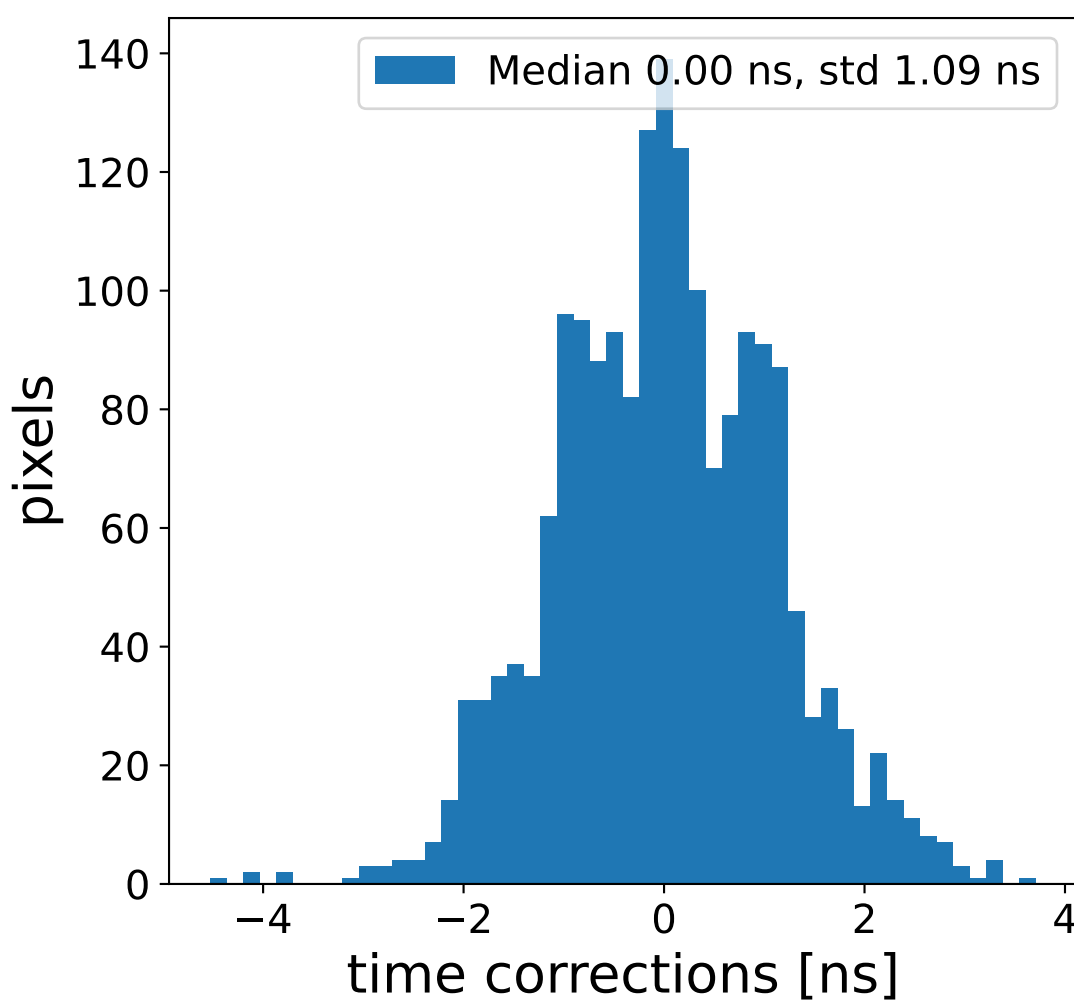
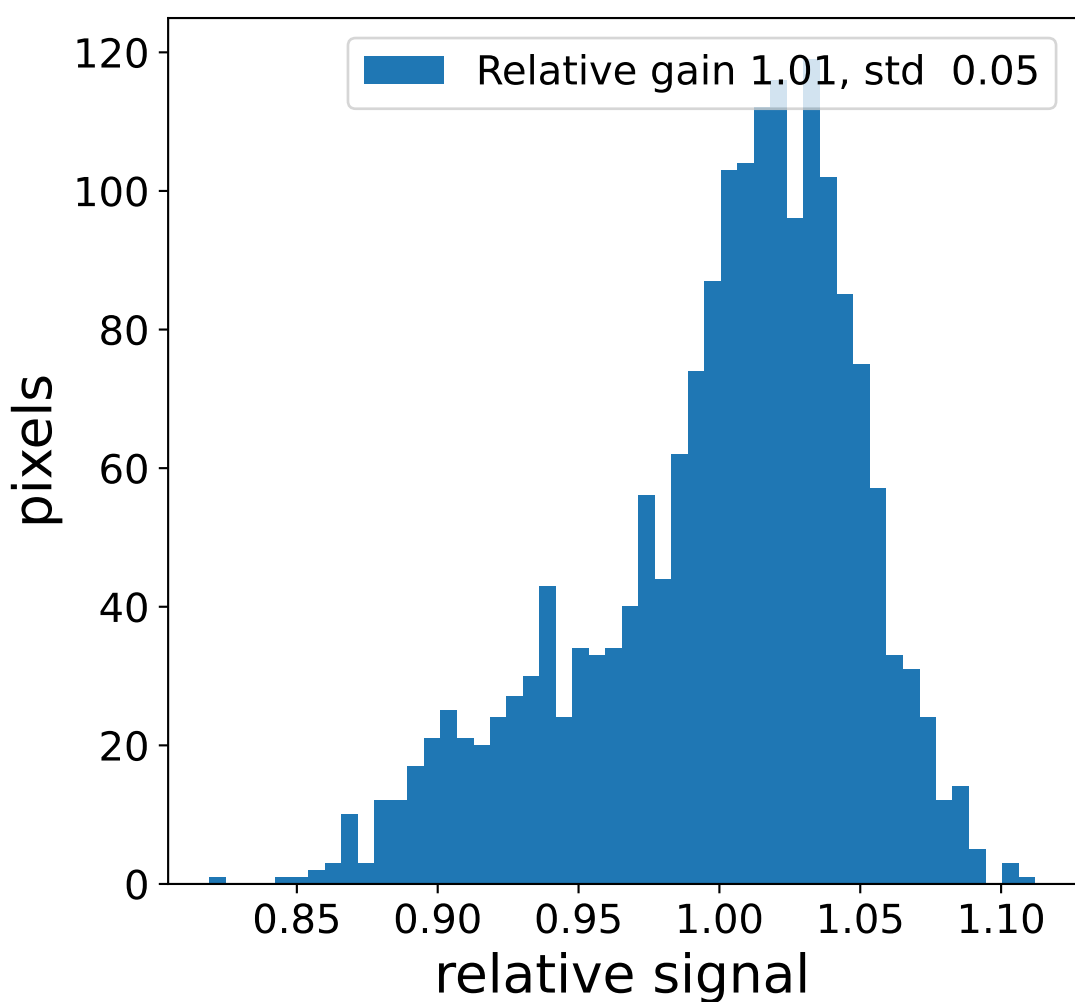
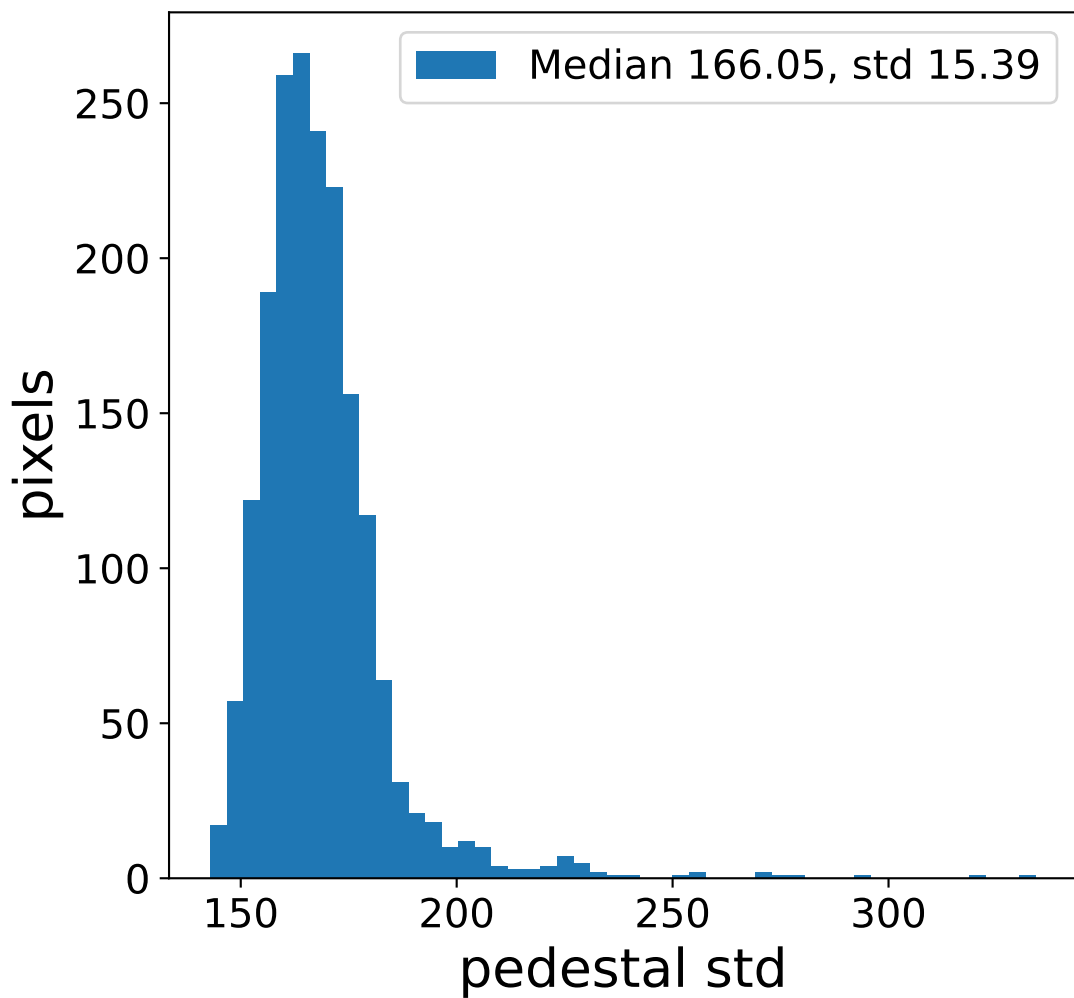
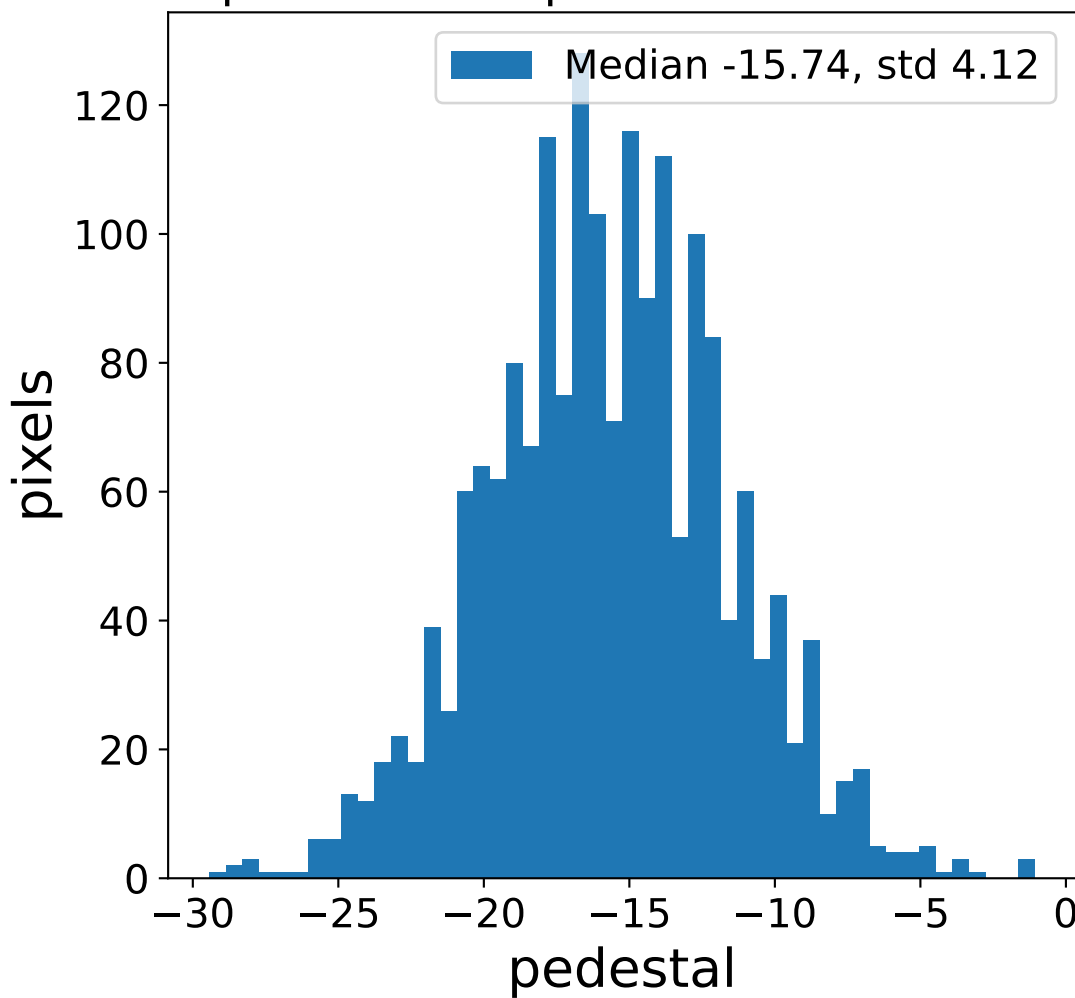


# Run 12055 channel: HG

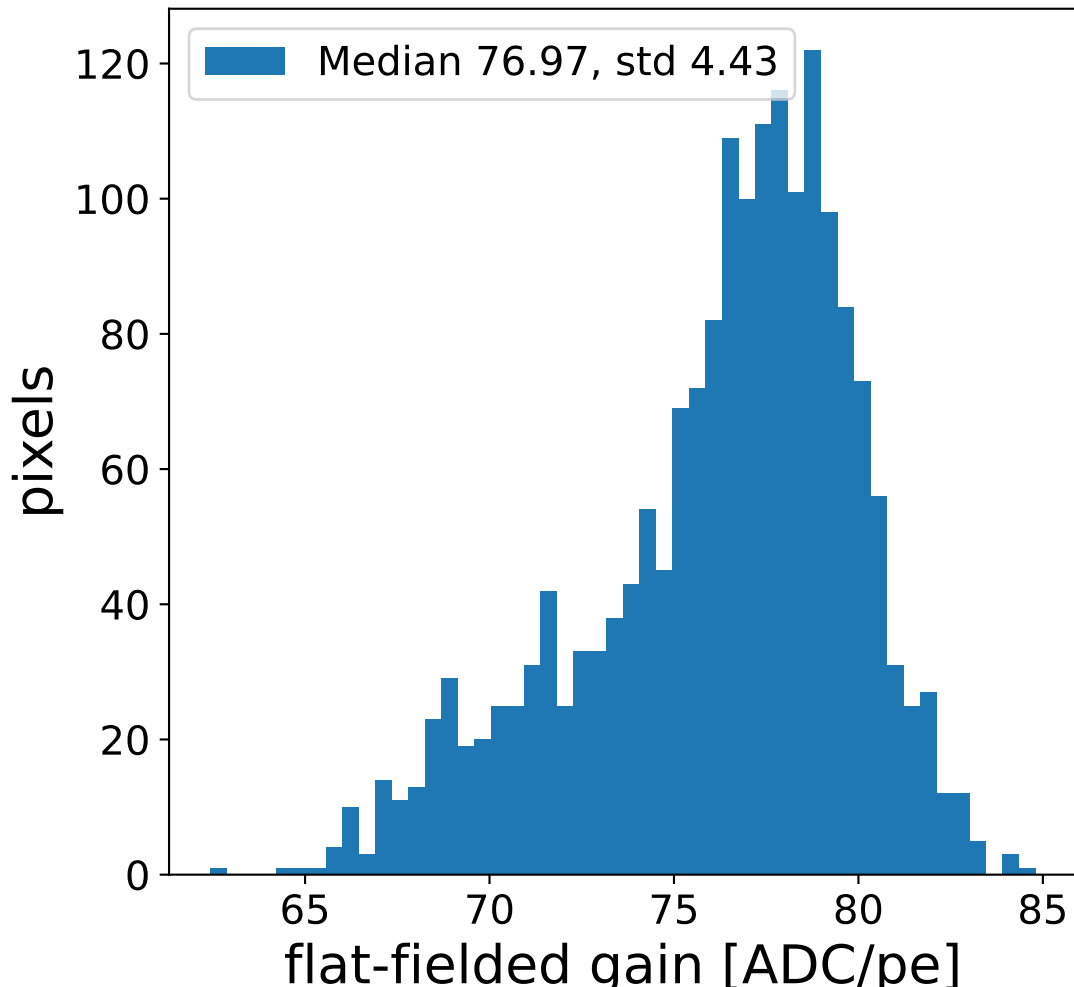
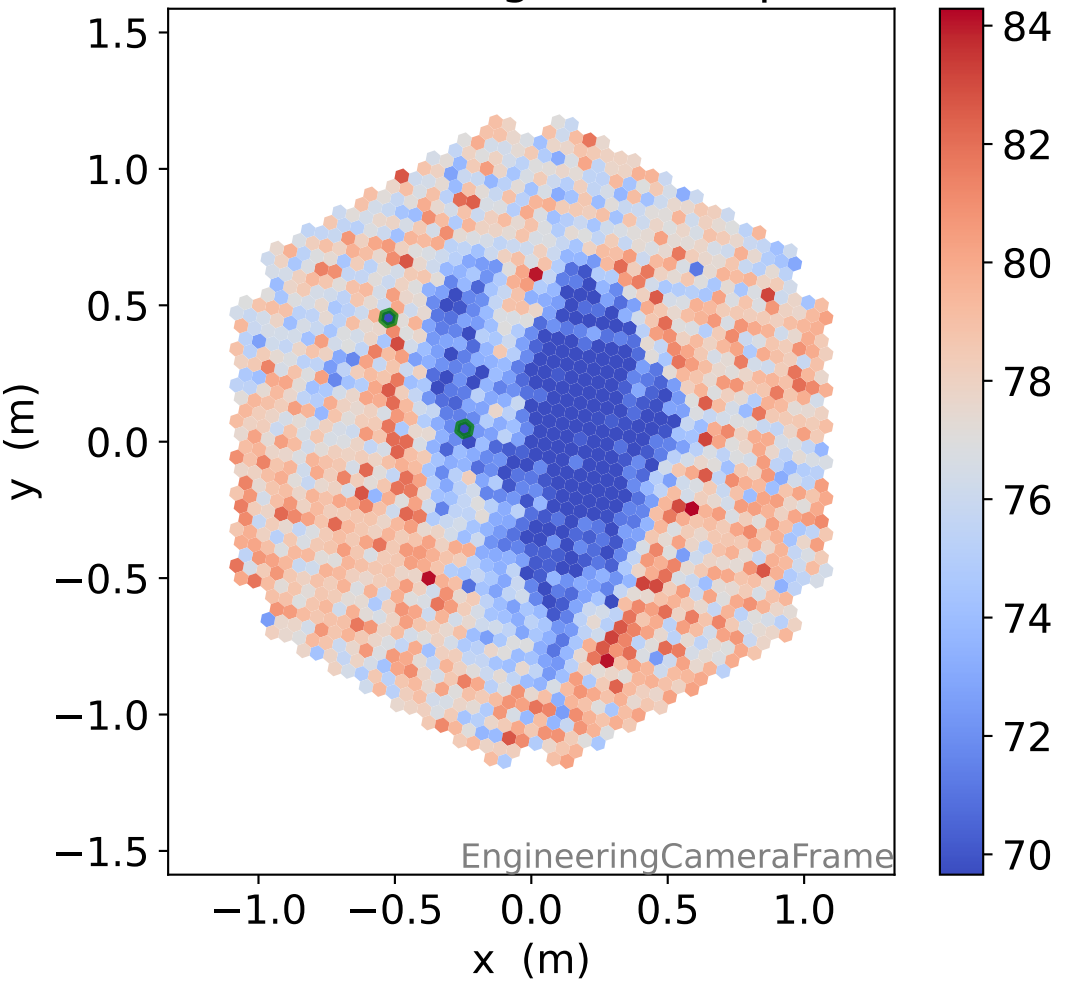
## FF sample of 10000 events



## pedestal sample of 10000 events

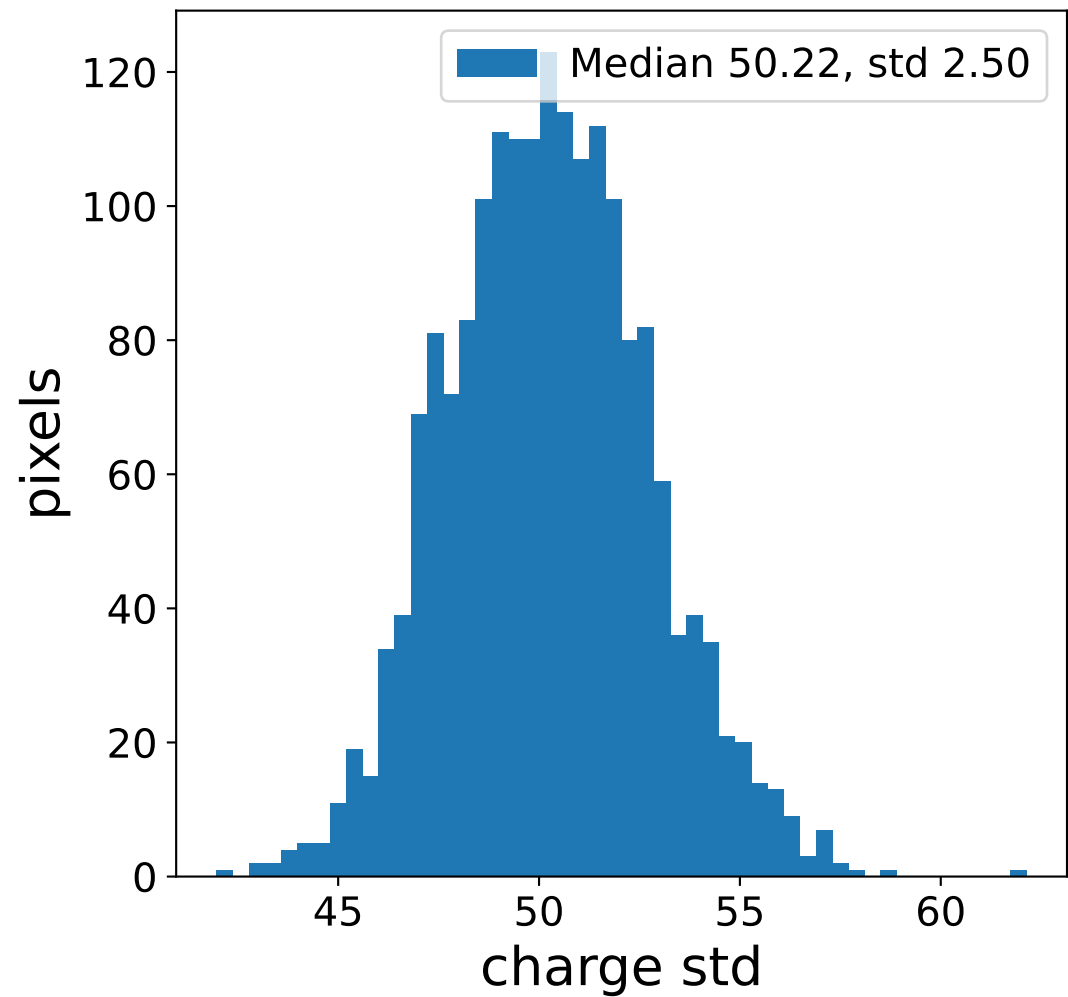
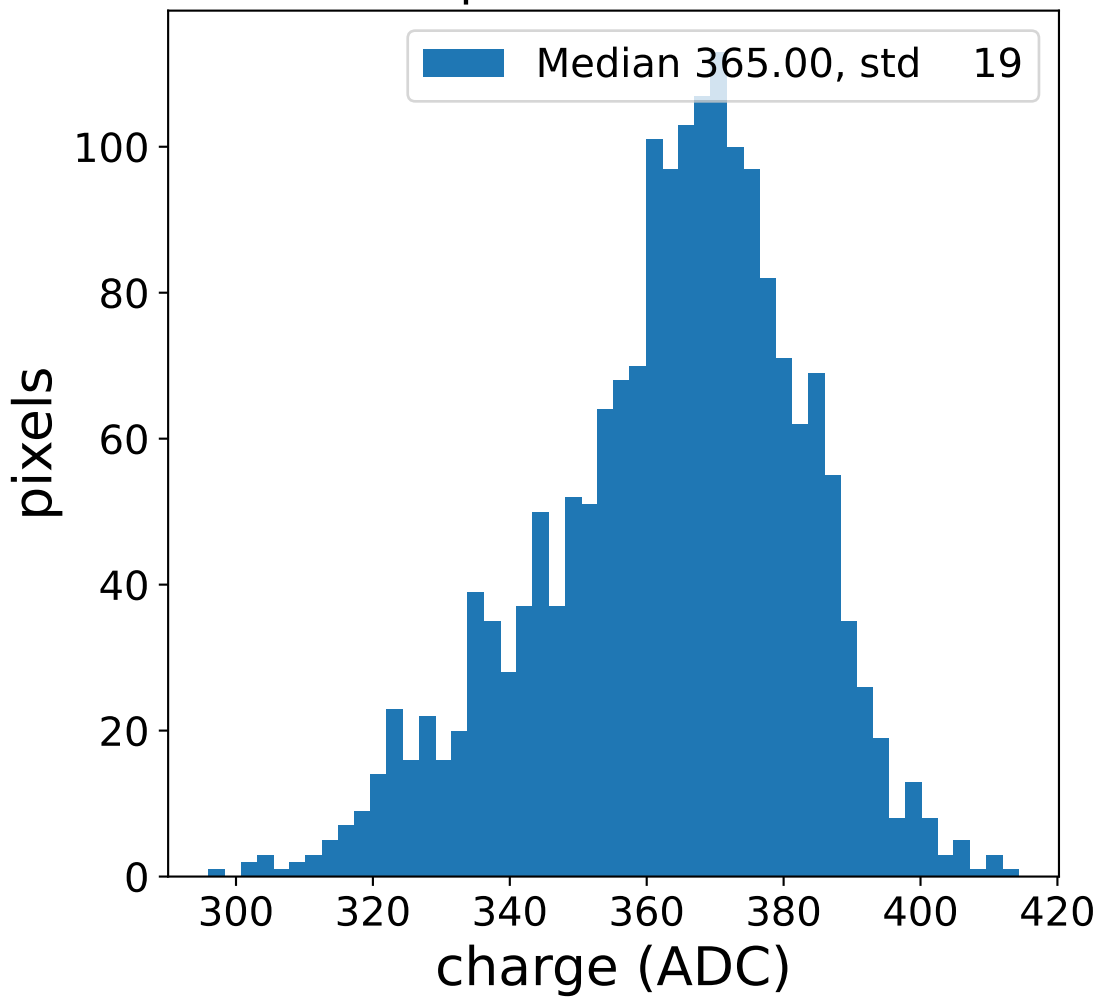


## flat-fielded gain [ADC/pe]

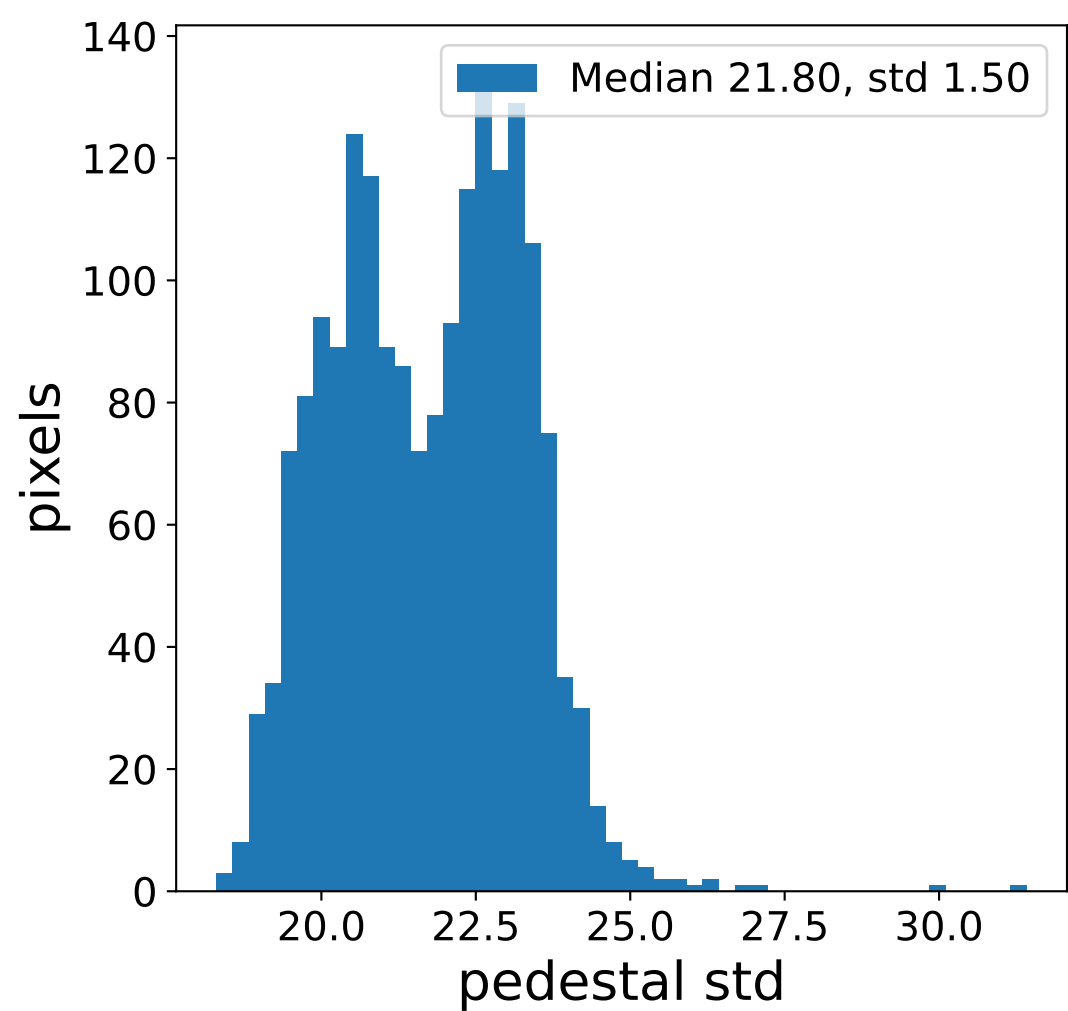
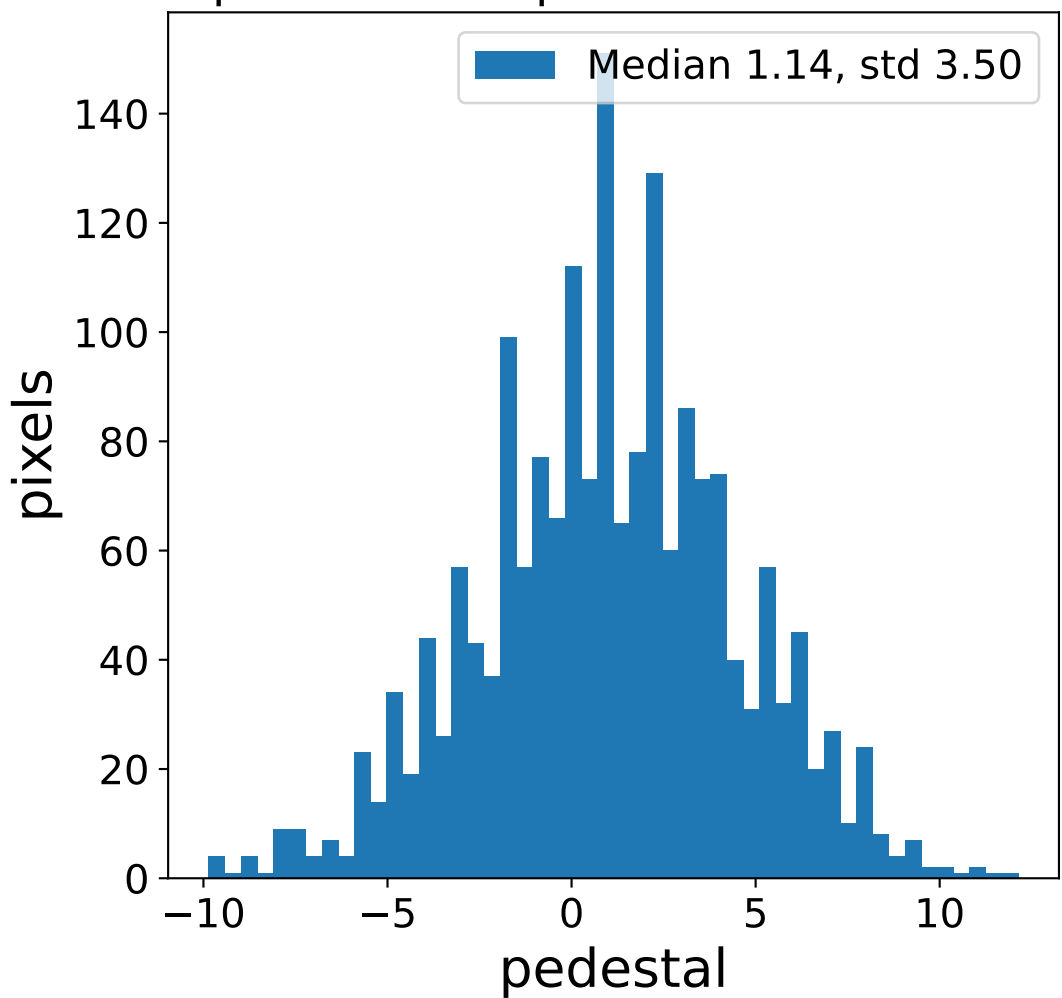


# Run 12055 channel: LG

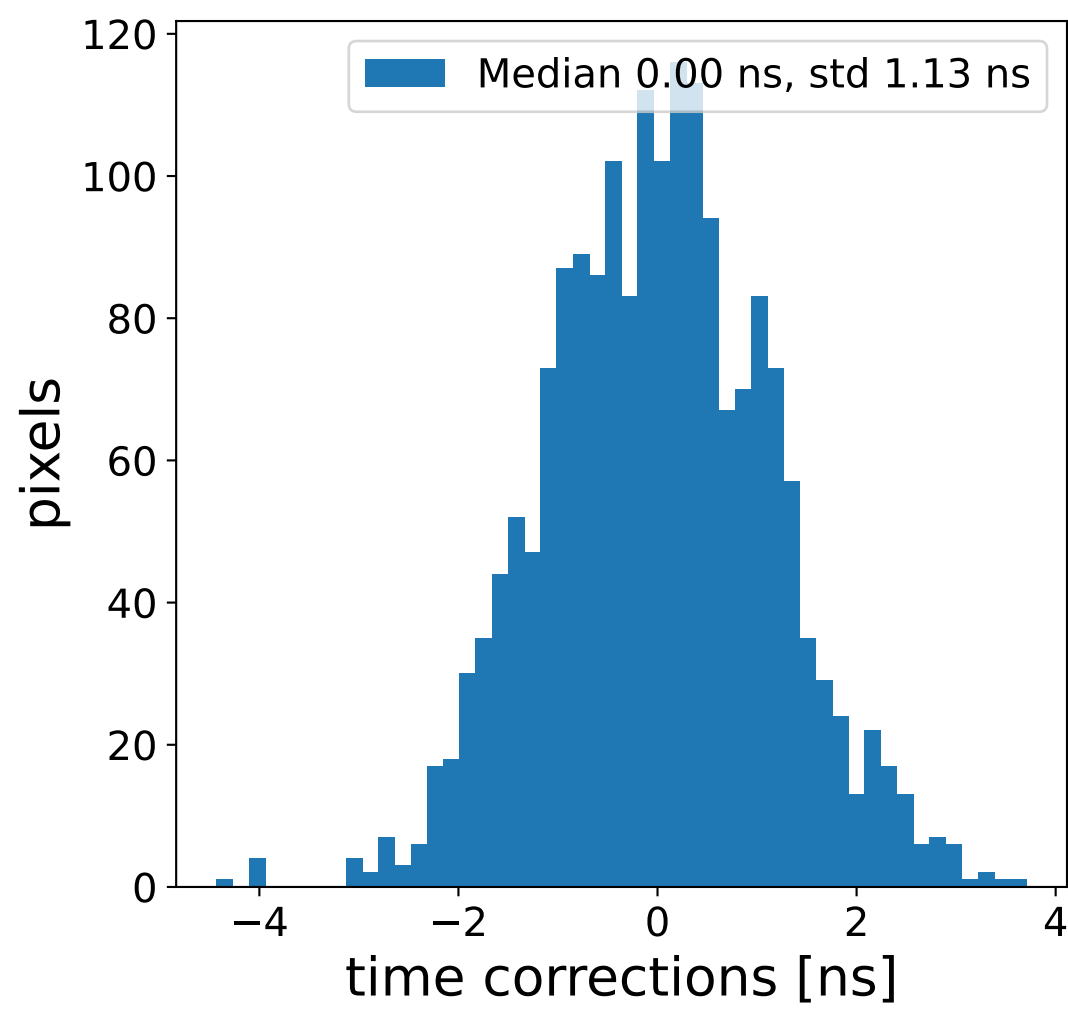
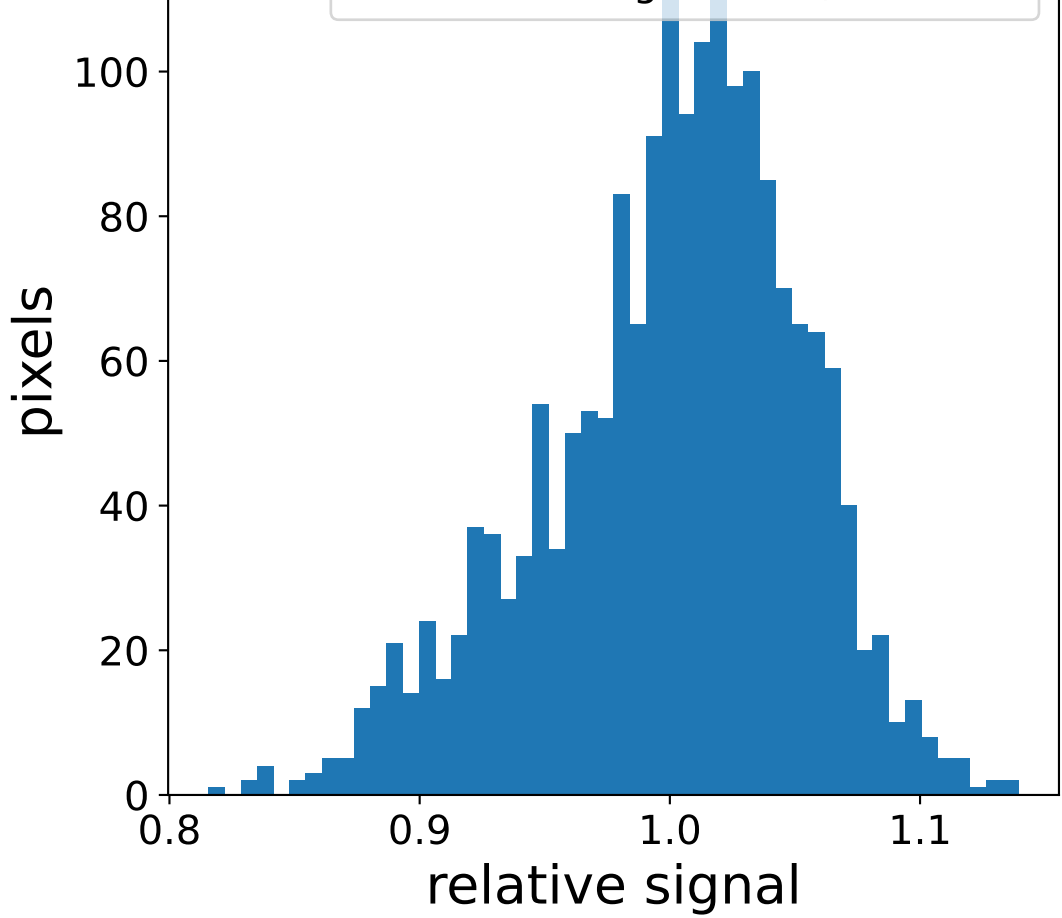
## FF sample of 10000 events



## pedestal sample of 10000 events



## Relative gain 1.01, std 0.05



## flat-fielded gain [ADC/pe]

